



深圳市云希科技有限公司

ShenZhen Yunxi Technology Co.,Ltd.

3rd Floor, Building A1, Xinyuan Industrial Zone, Gushu Shangweiyuan, Xixiang Street, Bao'an District, Shenzhen, China

Antenna test Report

Customer: **Hosoton**

Project Name: **H101**

RF Engineer: 向工

Testing Date: 2024-10-07

Operating band: WiFi/GPS/BT GSM W1/2/4/5/8

FDD:1/2/3/4/5/7/8 /12/17/18/19/20/26/66 TDD:34/38/39/40/41

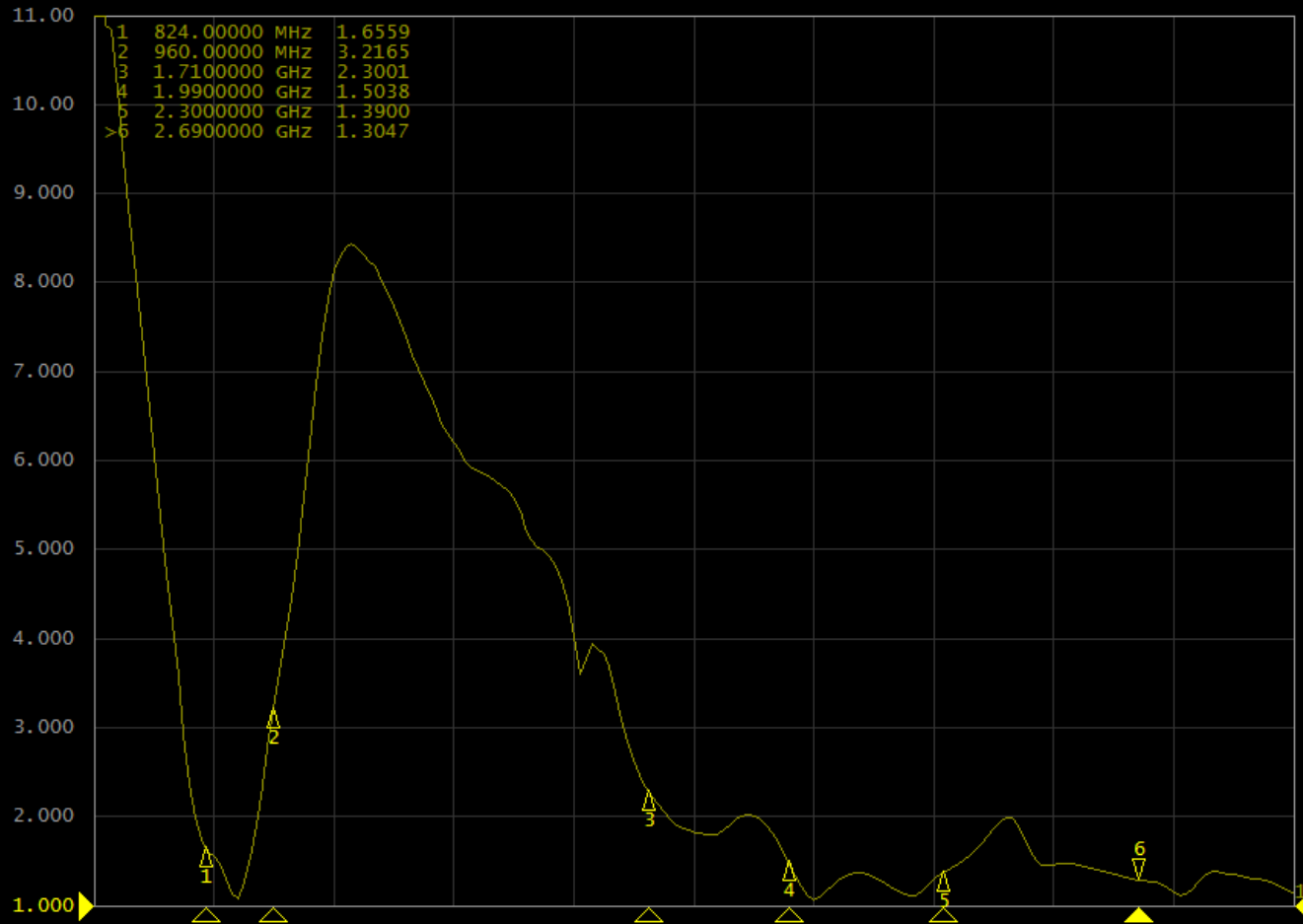


云希科技射频空间

S11-SWR

1 Active Ch/Trace 2 Response 3 Stimulus 4 Mkr/Analysis 5 Instr State

Tr1 S11 SWR 1.000/ Ref 1.000 [F1 M]



1 Start 600 MHz

IFBW 70 kHz

Stop 3 GHz

Sim PExt Cor |

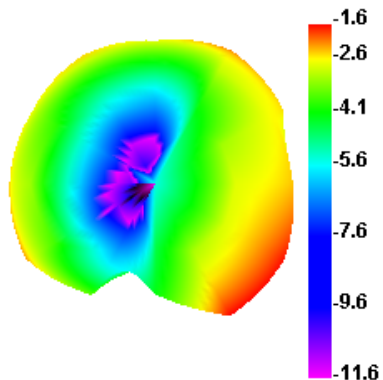
天线效率/增益

Freq (MHz)	Effi (%)	Gain (dBi)
820	40.79	-1.55
830	40.5	-1.46
840	39.51	-1.59
850	39.84	-1.47
860	38.84	-1.53
870	43.25	-0.99
880	41.88	-0.87
890	43.59	-0.52
900	39.71	-0.6
910	37.42	-0.53
920	40.51	0.16
930	39.94	0.2
940	33.41	-0.7
950	33.55	-0.52
960	29.11	-1.06

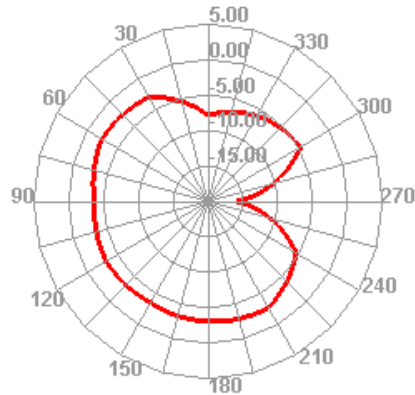
Freq (MHz)	Effi (%)	Gain (dBi)
1710	31.36	-1.31
1750	32.54	-1.35
1790	35.15	-1.94
1830	45.98	-0.1
1870	46.74	0.28
1910	45.3	0.13
1950	42.29	1.61
1990	44.45	1.52
2030	41.95	0.97
2070	49.41	1.61
2110	52.47	2.37
2150	52.79	2.37
2190	50.01	1.8
2230	38.54	0.88
2270	42.16	-0.03
2300	48.46	1.35
2340	51.99	2.29
2380	41.8	1.23
2420	36.64	-0.43
2460	32.93	-1.13
2500	41.7	1.16
2540	37.98	0.9
2580	41.68	1.34
2620	43.03	1.81
2660	41.54	1.55
2690	37.18	0.54

天线3D/2D方向图

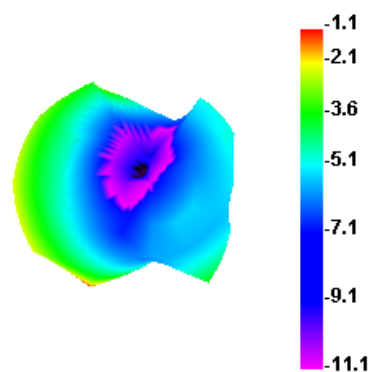
820.000MHz



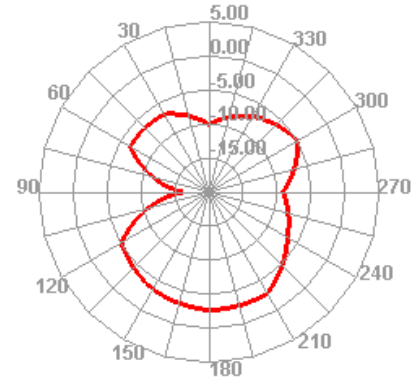
820.000MHz H



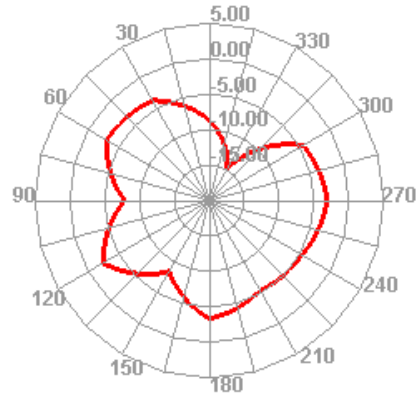
960.000MHz



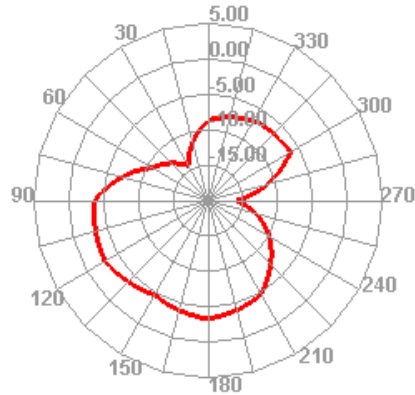
960.000MHz H



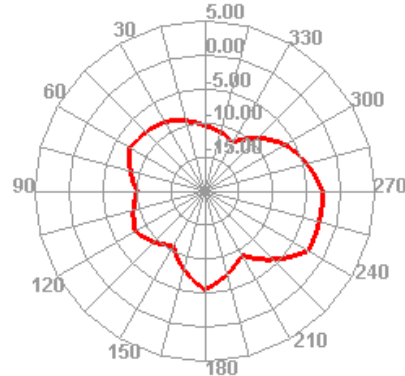
820.000MHz E1



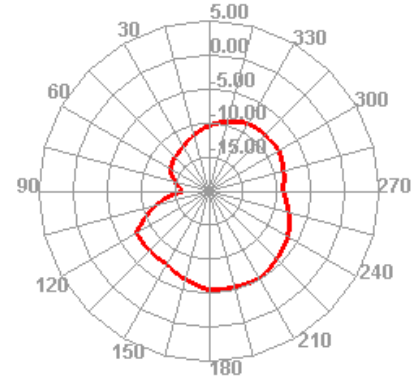
820.000MHz E2



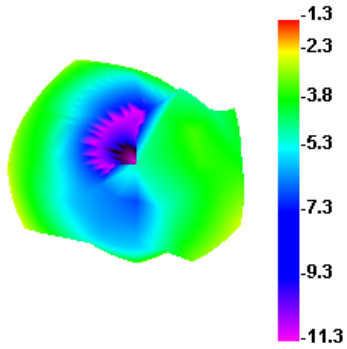
960.000MHz E1



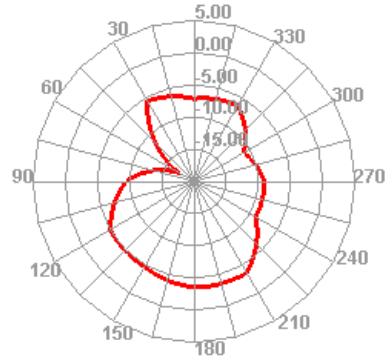
960.000MHz E2



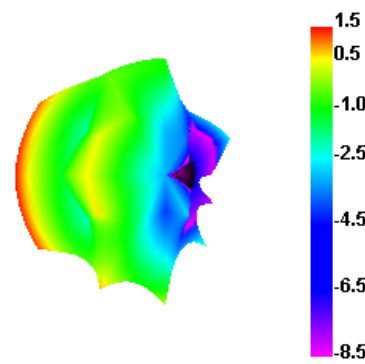
1710.000MHz



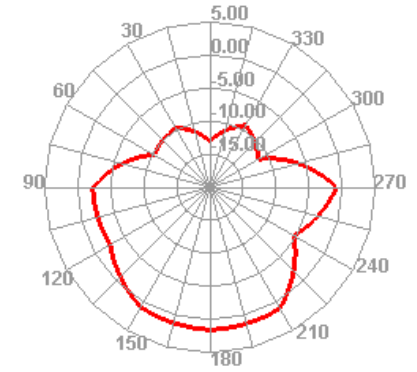
1710.000MHz H



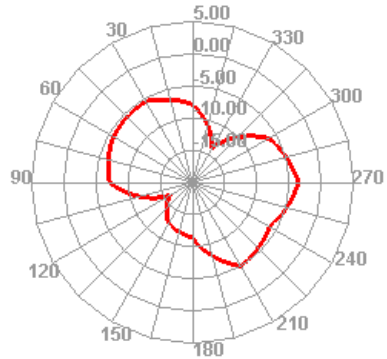
1990.000MHz



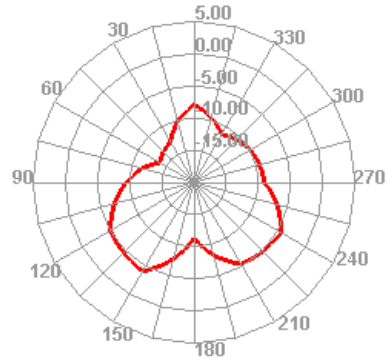
1990.000MHz H



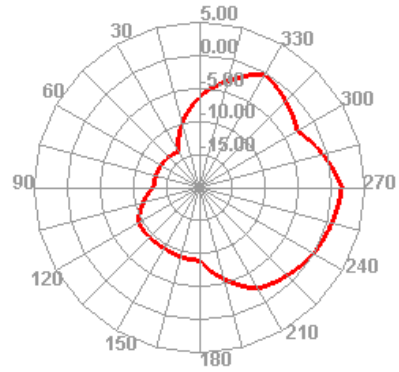
1710.000MHz E1



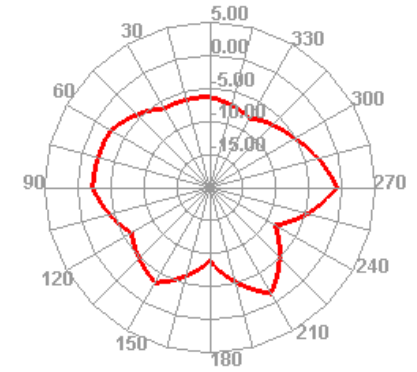
1710.000MHz E2



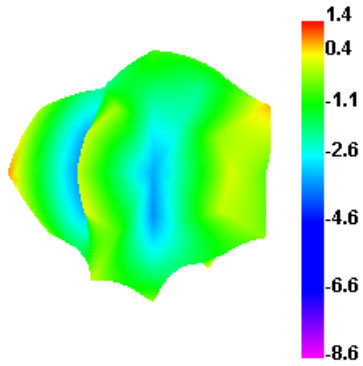
1990.000MHz E1



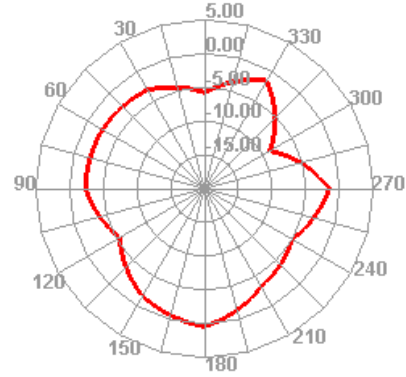
1990.000MHz E2



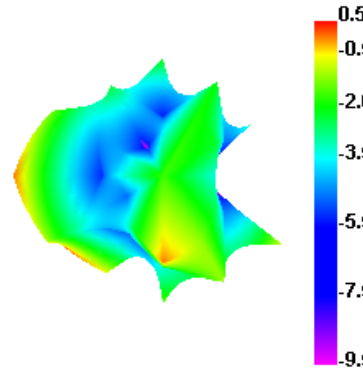
2300.000MHz



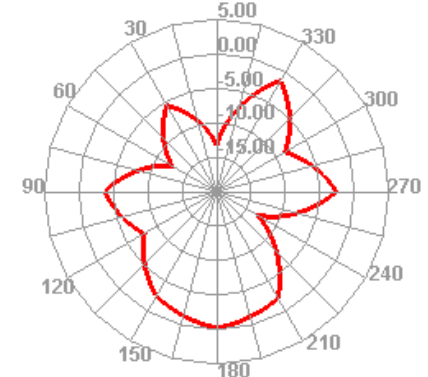
2300.000MHz H



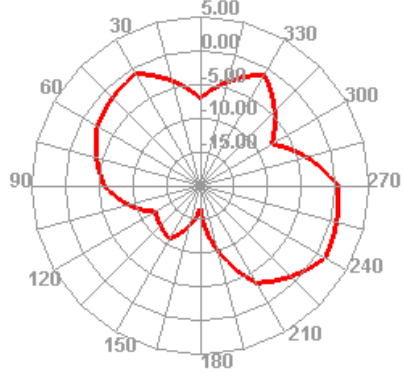
2690.000MHz



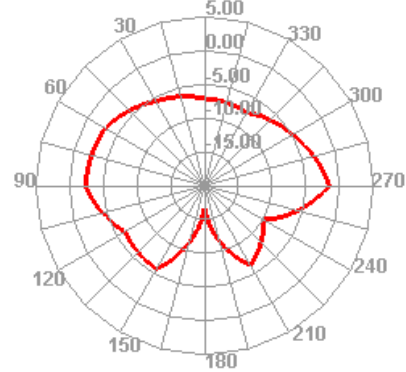
2690.000MHz H



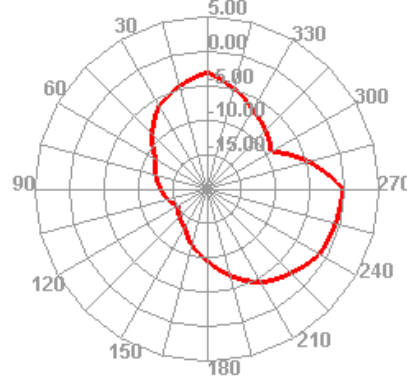
2300.000MHz E1



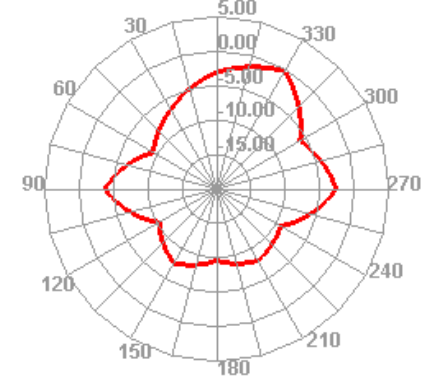
2300.000MHz E2



2690.000MHz E1



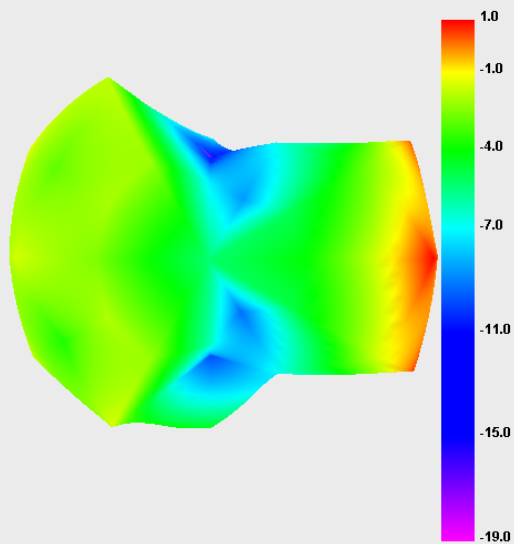
2690.000MHz E2



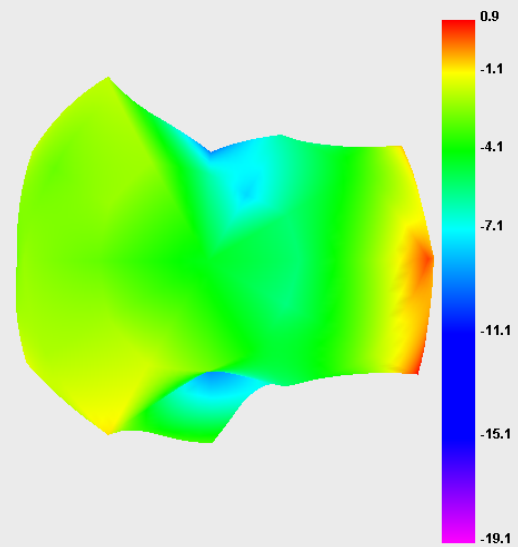
WiFi2.4G/BT

Freq (MHz)	Effi (%)	Gain (dBi)
2400	42.5	0.96
2410	38.56	0.55
2420	39	0.65
2430	38.76	0.72
2440	40.44	0.82
2450	41.23	0.89
2460	42.08	0.91
2470	41.26	0.71
2480	45.49	1.19
2490	39.55	0.55
2500	45.06	1.24
MAX. Gain		1.24

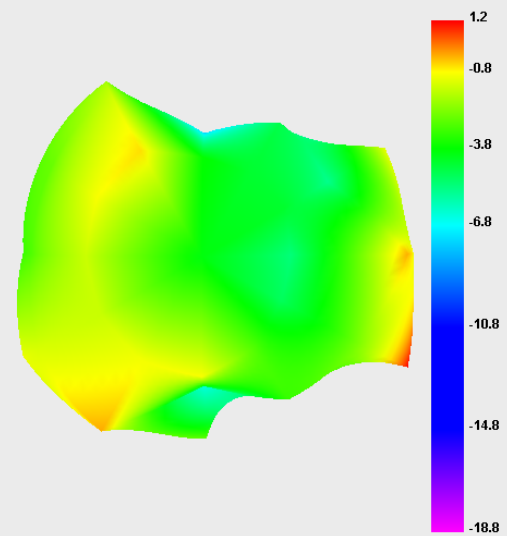
2400.000MHz



2450.000MHz

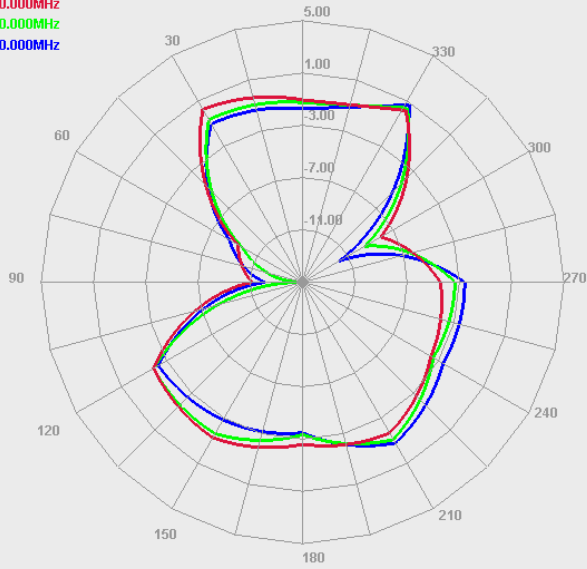


2500.000MHz



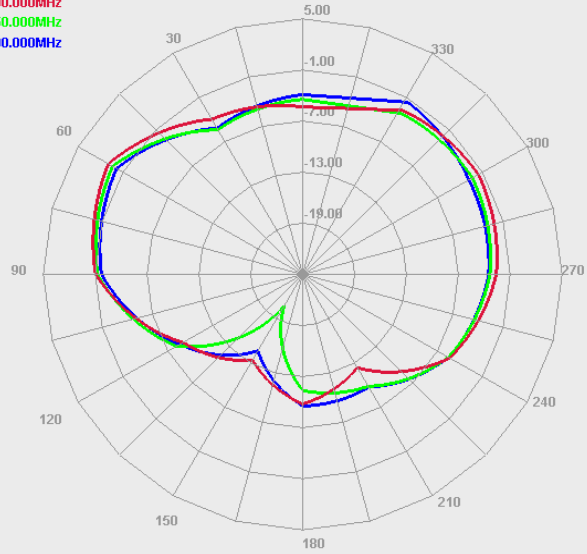
Horizontal

2400.000MHz
2450.000MHz
2500.000MHz



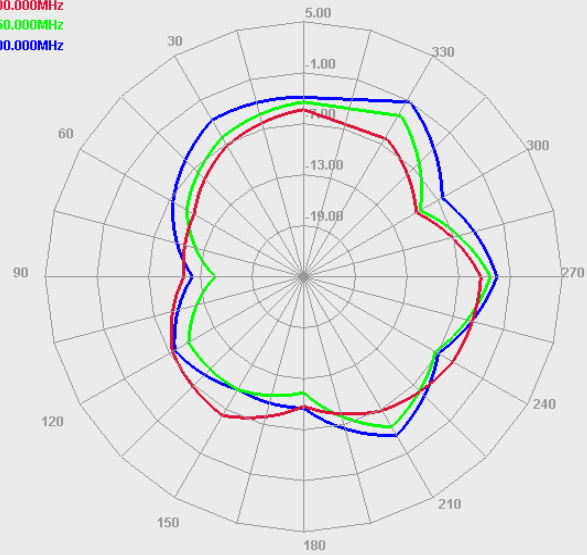
E1 Face

2400.000MHz
2450.000MHz
2500.000MHz



E2 Face

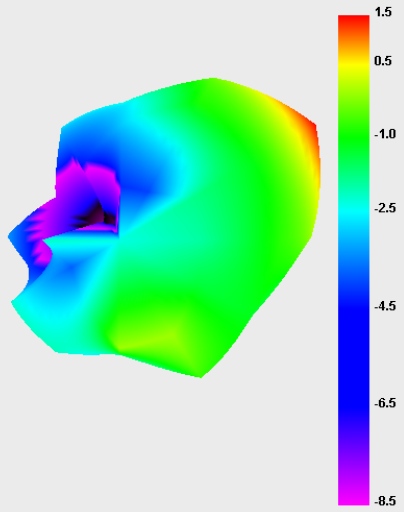
2400.000MHz
2450.000MHz
2500.000MHz



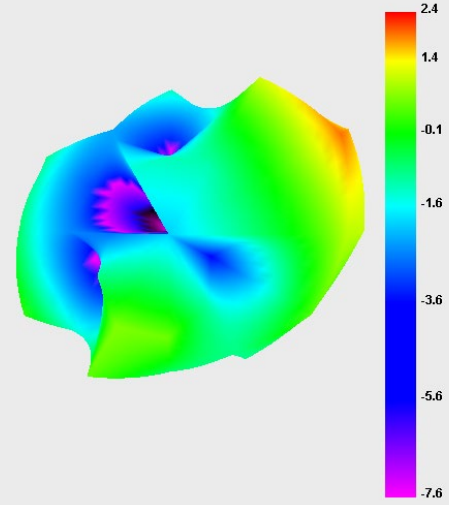
WiFi5.8G

Freq (MHz)	Effi (%)	Gain (dBi)
5000	33.77	1.46
5100	38.59	1.66
5200	28.23	0.43
5300	33.15	1.77
5400	29.9	1.11
5500	35.54	2.42
5600	29.8	1.22
5700	20.91	-0.43
5800	30.52	0.47
5900	30.58	0.36
MAX. Gain		1.04

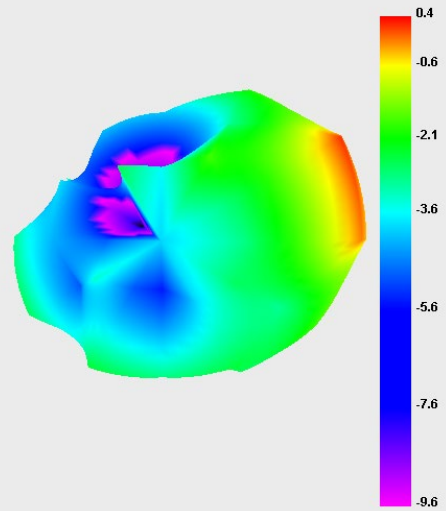
5000.000MHz



5500.000MHz

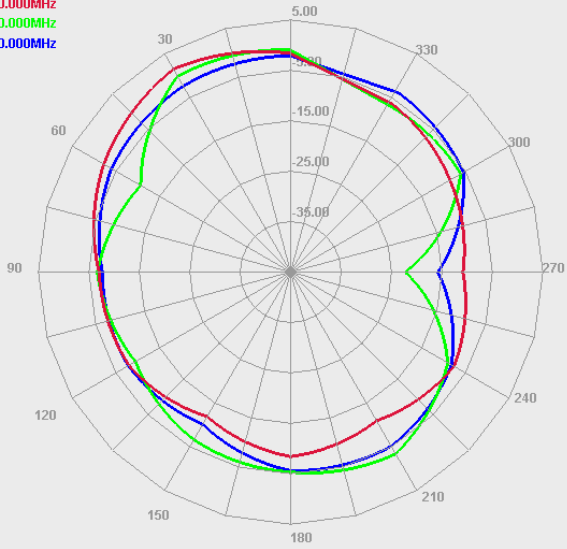


5900.000MHz



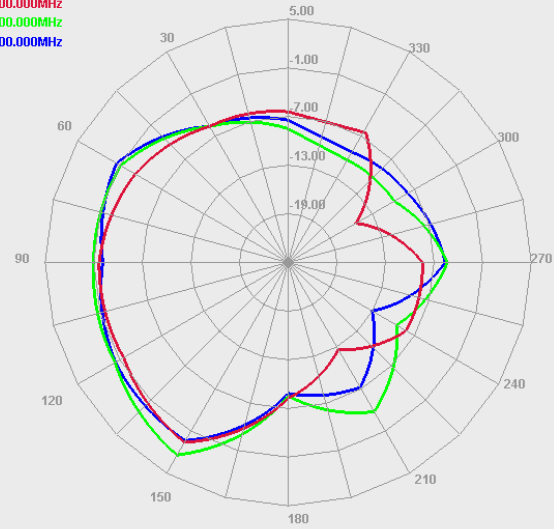
Horizontal

5000.000MHz
5500.000MHz
5900.000MHz



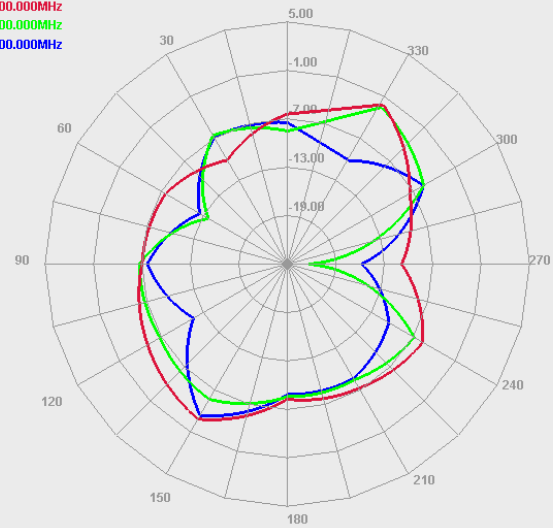
E1 Face

5000.000MHz
5500.000MHz
5900.000MHz



E2 Face

5000.000MHz
5500.000MHz
5900.000MHz



Antenna size

