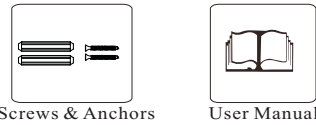


Figure 1 shows three types of sensors: Receiver, Ring Button, and Adhesive Sticker. The Receiver is a square device with a small vertical slot in the center. The Ring Button is a rectangular device with a small vertical slot and a circular button below it. The Adhesive Sticker is a rectangular device with a small vertical slot.



Note: The ring button in this kit is already pre-paired with the receiver for immediate use.

AC Powered Receiver

The diagram shows the AC Powered Receiver from two perspectives. The front view (left) shows a square device with a small circular button (1), two vertical sliders (2 and 3), and a small rectangular LED light (4). The top view (right) shows the same device from above, highlighting the plug (5) and the speaker grille (6).

① Function Button
② Volume Control
③ Music Control
④ LED Light
⑤ Plug
⑥ Speaker

Waterproof Ring Button

1. Follow the manufacturer's recommendations when using tools, and wear appropriate protective gear (e.g., safety goggles).
2. Before drilling into walls, check for hidden cables or pipes to avoid damaging them. If unsure, use a cable/pipe detector.
3. Do not install the ring button on a metal door, as it may obstruct signal transmission.
4. Remove the battery insulation strip from the ring button before use. (As picture ①)
5. Ensure the installation area is clean. Wipe the surface with a clean cloth. Note that adhesive stickers may not stick well to dirty or uneven surfaces. Prolonged exposure to sunlight or rain may also affect adhesion.



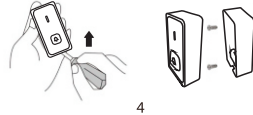
Choose a Location: Select a spot away from heat sources or moving objects (e.g., doors). For locations that do not require fixing, choose a place where the receiver can be easily seen and heard.

1. Doorbell Installation:

Plug in the receiver. Insert the receiver into a standard power outlet indoors.

2. Ring Button Installation:

- Before installation, test the operating range at the selected location and set the ringtone (if needed).
- Before drilling, ensure there are no cables or pipes in the wall. A drill and a Phillips screwdriver are required for installation.
- ⓐ Use a screwdriver to open the ring button and separate the front cover from the back cover. Secure the back cover to the wall at an appropriate height using two screws through the reserved holes.



If you do not plan to fix the ring button to the wall, place it in your desired location.

1.Receiver Pairing



Power on the receiver and pair it by pressing the function button and ring button simultaneously after the beep.

Short press the volume control button to adjust the volume from low to high, with four levels in total.

3.Change the Tone

Short press the music control button to cycle through 58 classic Eastern and Western chimes.

4.Mute&Reset

- Short press the function button  to switch between normal and silent modes.
- Press and hold the function button  for 10 seconds until you hear the second beep, then release it to indicate successful code clearing. All settings will return to factory defaults.

No.	Chimes Name
1	Dingdong x2
2	Dingdong
3	Westminster Chimes
4	For Elise
5	Bird Tweet
6	Cock
7	Telephone Ringing
8	Wolf
9	Moonlight
10	Canon
11	Yesterday Once More
12	Bell+ Cuckoo
13	The cuckoo waltzes
14	ringtone
15	Chinese folk music
16	The dawn
17	Turkey March
18	Alarm

6

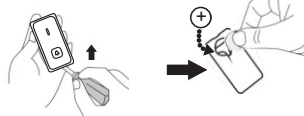
No.	Chimes Name
19	The Great Compassionate Mantra
20	1812 Overture
21	The Moon Over a Fountain
22	Twinkle Twinkle Little Star
23	Waltz of the flowers
24	Drinking Song
25	Trout quintet
26	Circus troupe
27	Dance of the Little Swans
28	Fiddler on the roof
29	Dream God
30	Carmen overture
31	Song Of Homebound Fishman
32	Dog
33	Chinese folk music
34	Autumn in Paris
35	Russian Dance
36	Red River Valley
37	Four seasons. spring
38	Schubert Serenade

7

No.	Chimes Name
39	We wish you a merry Christmas
40	Ave Maria
41	Toy soldier marches
42	Ode to Joy
43	Eva's Polka
44	Rage Over a Lost Penny
45	Hungarian Dance
46	Minuet in G major
47	Auld Lang Syne
48	Chinese Dance
49	Dancer
50	Toreador Song
51	Lullaby
52	Greens leevies
53	Happy New Year
54	Song Bird
55	Chopin Waltz
56	Song of herding sheep
57	Happy birthday
58	Cucurbit flute

8

Open the battery cover and insert a CR2032 battery



Note: The CR2032 is a button cell battery.
Please take note of the following WARNING.

- **INGESTION HAZARD:** This product contains a button cell or coin battery
- **DEATH** or serious injury can occur if ingested
- A swallowed button cell or coin battery can cause **Internal Chemical Burns** in as little as **2 hours**.
- **keep** new and used batteries **out of reach of children**.



9

	Receiver	Ring button
Operating Temperature	-40°F to 140°F	-40°F to 140°F
Radio Frequency	433 MHz	433 MHz
Range (open field)	1,000 ft	1,000 ft
Sound Level	0-120dB	-
Battery Type	Plug in	CR2032
Battery Life	Up to 5 years	Up to 3 years
Rainproof	N/A	IP55

Problem: If the receiver is not working

- Problem: If the receiver is not working**
Potential Cause & Solutions:

- The receiver may be out of range, try placing it in a different location.
- Check all batteries and replace them if necessary.
- Ensure the LED on the ring button lights up properly when activated.
- Verify that the receiver is not in silent mode and that the ring button is successfully paired with the receiver.

- Problem:** If the signal range is reduced
Potential Cause & Solutions:

- Metal structures, including all PVC door frames, may reduce the signal range. Avoid installing the receiver or button on or near metal surfaces.
- Move the receiver closer to the button.
- Low battery power can reduce the signal range.
- In cold conditions (below 5°C), the batteries may need to be replaced more frequently.

10

- **30-Day Money-Back Guarantee:**

If you are not satisfied with your purchase, you can request a refund within 30 days.

- **12-Month Warranty:**

The device must have been used under proper technical conditions. Covers failures and defects not caused by human error.



Scan the QR code to activate your warranty and enjoy full customer support

15

FOR ANY PROBLEMS DURING USE

PLEASE CONTACT US AT
support@bn-link.com

This device complies with part 15 of the FCC Rules. Operation is subject to the following two conditions: (1) This device may not cause harmful interference, and (2) this device must accept any interference received, including interference that may cause undesired operation.

Any Changes or modifications not expressly approved by the party responsible for compliance could void the user's authority to operate the equipment.

Note: This equipment has been tested and found to comply with the limits for a Class B digital device, pursuant to part 15 of the FCC Rules. These limits are designed to provide reasonable protection against harmful interference in a residential installation. This equipment generates uses and can radiate radio frequency energy and, if not installed and used in accordance with the instructions, may cause harmful interference to radio communications. However, there is no guarantee that interference will not occur in a particular installation. If this equipment does cause harmful interference to radio or television reception, which can be determined by turning the equipment off and on, the user is encouraged to try to correct the interference by one or more of the following measures:

- Reorient or relocate the receiving antenna.
- Increase the separation between the equipment and receiver.
- Connect the equipment into an outlet on a circuit different from that to which the receiver is connected.
- Consult the dealer or an experienced radio/TV technician for help.

FCC Radiation Exposure statement

The device has been evaluatec to meel general RF exposure requirement. The device can be used in portable exposure condition without restriction.