



PCTECH ELECTRONICS (SZ) Co.,LIMITED
Building #9 DaWei 2RD XinQiao ShaJing Town BaoAn ShenZhen City Guangdong Province, P.R. China
lilyjuan@pctechina.com

Specifications and Operations

Product type: Office Ergo 2.4G Wireless

(一) **Model No: XM227R**

Mouse size : 112L*80W*46H MM

Solution: BK solution, low power saving version

Mouse weight 75G (Without battery ,with dongle)

Mouse Number of Keys: 6 keys

Mouse battery : AA * 1PC Alkaline

Mouse Left /Right switch life times:10.000.000 times (Huano)

Mouse Middle /side/Dpi switch life times:3.000.000 times (Huano)

Silent switches for Left /Right/Middle/Side/DPI

Sensor: KA8G2

DPI: 800-1600(Default)-2400-4000

Rubber wheel with teeth for wheel

Encoder switch:F-SWITCH (300.000 life times)

IC: BK2482, 1:1 pairing version

Polling rate 250Hz,Acceleration 10G, Frame Rate 4000 fps, 30 IPS

Product color: black/white color of glossy UV coating with logo by silkscreen

Operating force of mouse : 65±10g

Rated Power: DC1.5V/6.5mA

Sleep mode:

No working state ≤15 seconds, 1.5 V/ 0.03mA

Wake up : any key

Nano receiver

Wireless working distance 6-10M

Interface: USB 2.0

Without Software

Compatible with: Windows XP/VISTA/7/8/10

(二) **Product's feature**

.Wireless office mouse of 6D buttons

.Black /White with glossy UV coating color for mouse

.Rubber wheel with teeth for wheel

.Sensor KA8G2

.DPI : 800-1600(Default)-2400-4000

.Nano receiver

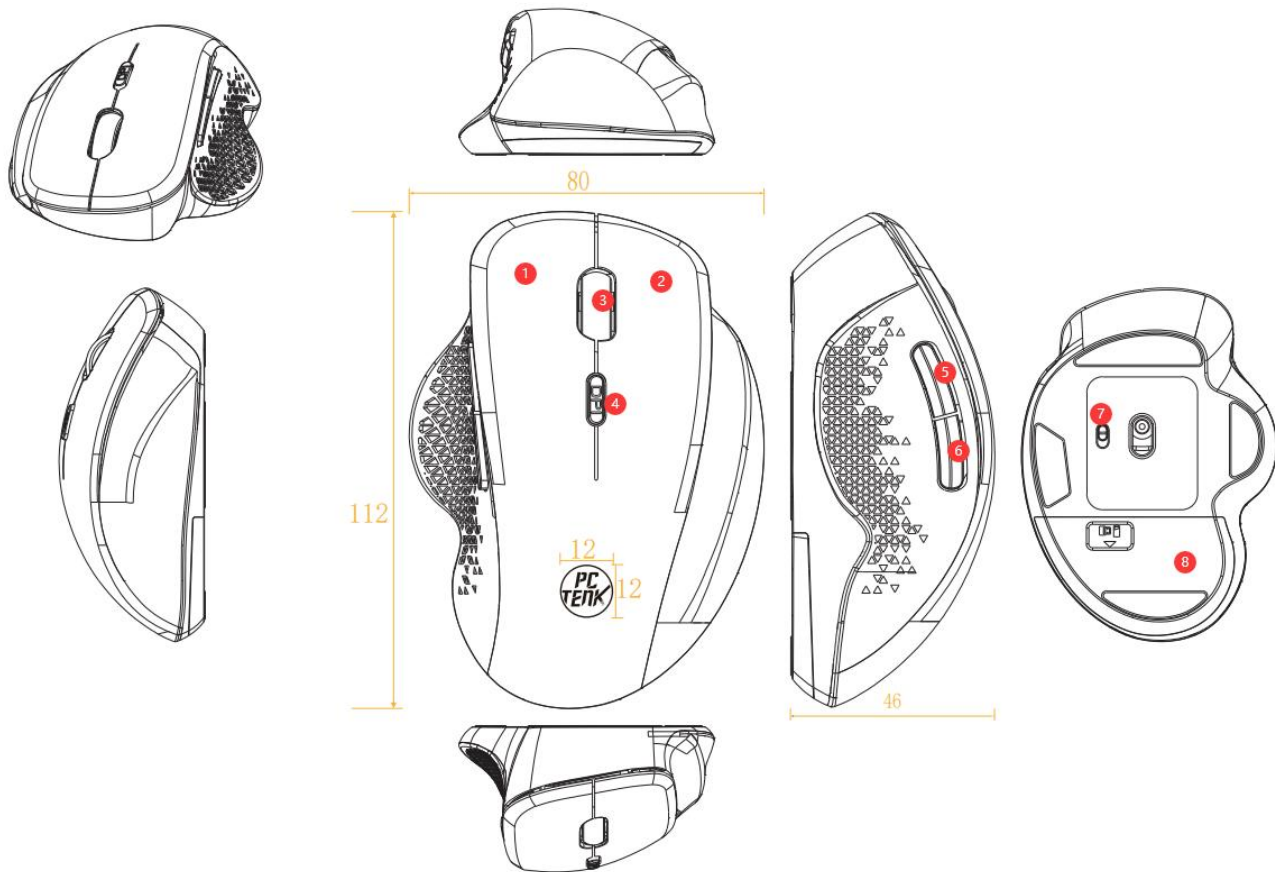
.Silent switches for Left /Right/Middle/Side/DPI



PCTECH ELECTRONICS (SZ) Co.,LIMITED

Building #9 DaWei 2RD XinQiao ShaJing Town BaoAn ShenZhen City Guangdong Province, P.R. China

lilyjuan@pctechina.com



(三) Key Description

MOUSE

1. Left Button
2. Right Button
3. Scroll Button
4. DPI button
5. Forward
6. Backward
7. On up/ off down switch
8. Nano receiver inside

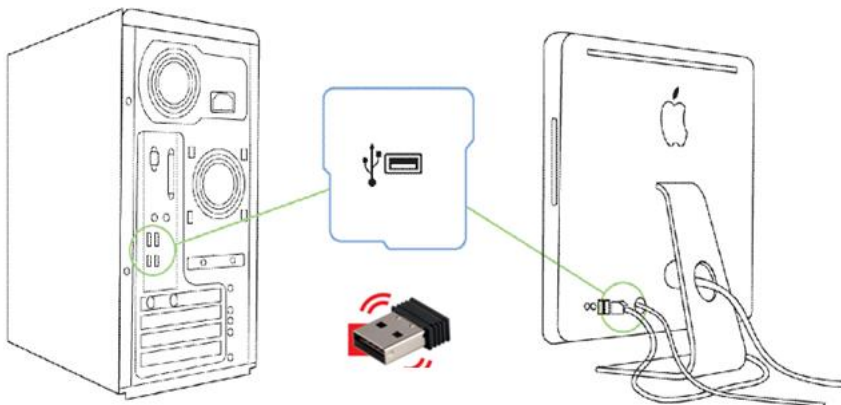


(四) RE-CONNECTION STEPS:

MOUSE:

- a.> Move out the Nano receiver from USB Port
- b.> Press three buttons of "Left button" ,"Right button" and "Scroll button" same time more than 3~ 5 seconds
- c.> Re-insert the Nano usb with PC USB Port ,the led indicator of bottom is stady on after
- d.> Re-connecting in success

(五) INSTALLING YOUR WIRELESS MOUSE



Step 1: Connecting the Nano receiver with PC as above image shown. (plug and play)

Step 2: Wait 2~3 seconds about till the mouse install automatic.

Step 3: Works in success.

Note:

Low battery led indictor of Mouse:

3.Scroll button :Power Led indicator **will be flash in Red** under the wheel button when low battery

When the voltage is less than 1.1V, the red led indicator will in red until the mouse stops working (indicating that the battery needs to be replaced, and the low voltage state will cause problems such as delay and distance, so please replace it as soon as possible).



This equipment has been tested and found to comply with the limits for a Class B digital device, pursuant to part 15 of the FCC Rules. These limits are designed to provide reasonable protection against harmful interference in a residential installation. This equipment generates, uses and can radiate radio frequency energy and, if not installed and used in accordance with the instructions, may cause harmful interference to radio communications. However, there is no guarantee that interference will not occur in a particular installation. If this equipment does cause harmful interference to radio or television reception, which can be determined by turning the equipment off and on, the user is encouraged to try to correct the interference by one or more of the following measures:

- Reorient or relocate the receiving antenna.
- Increase the separation between the equipment and receiver.
- Connect the equipment into an outlet on a circuit different from that to which the receiver is connected.
- Consult the dealer or an experienced radio/TV technician for help.

Caution: Any changes or modifications to this device not explicitly approved by manufacturer could void your authority to operate this equipment.

This device complies with part 15 of the FCC Rules. Operation is subject to the following two conditions: (1) This device may not cause harmful interference, and (2) this device must accept any interference received, including interference that may cause undesired operation.

RF Exposure Information

The device has been evaluated to meet general RF exposure requirement. The device can be used in portable exposure condition without restriction.