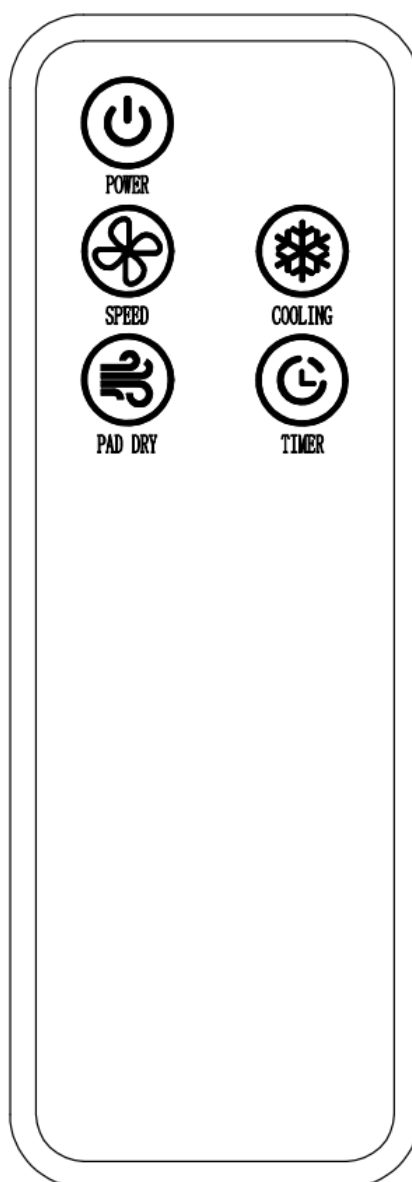


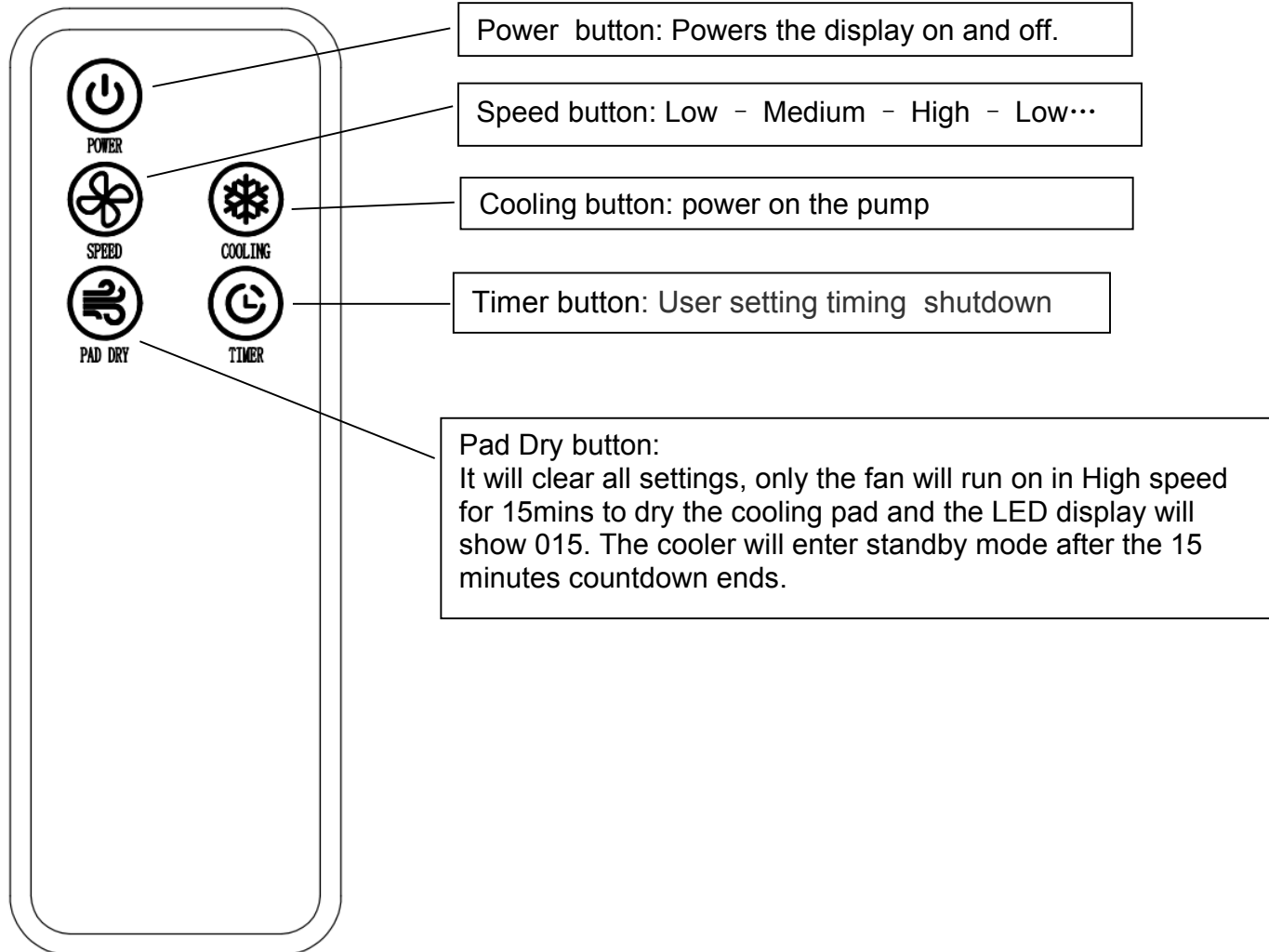
Remote Control

Model No. CAC36D、CAC18D

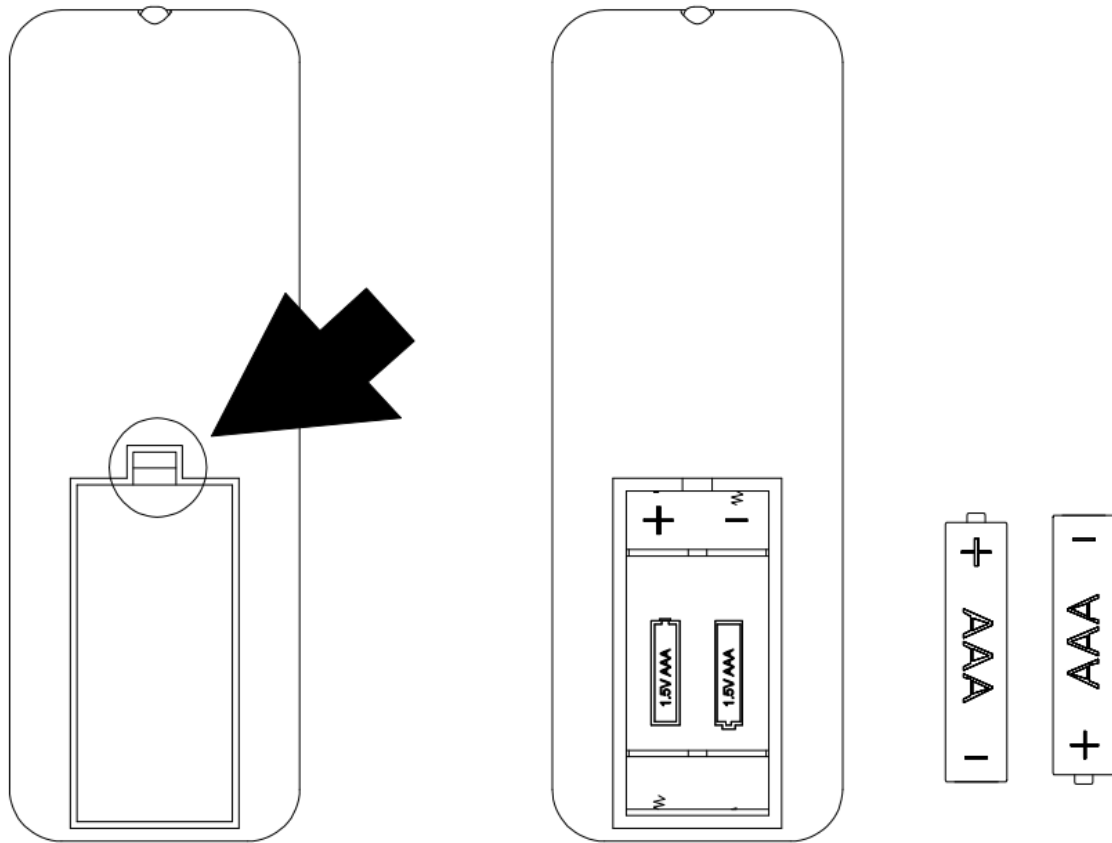


Remote Controller
User Guide

RODUCT OVERVIEW



Battery Installation



As Figured, open the back cover of the remote controller and install two AAA batteries (not included)

After the product is power, the power light will flash, and enter the standby mode

1.Power button: When the Power Light is flashing, press Power button to enter working mode, the cooler will work in low speed mode and speed display bar's blue light will activate. Press again to enter standby mode.

2. Speed button: When the cooler is operating, press Speed button to set fan speed, the fan speed will cycle between Low – Medium – High – Low... and LED display show F01 – F02 – F03 – F01... speed display bar's light will also change accordingly.

3.Cooling button: Press Cooling button to power on the pump, the cooling mode light will illuminate. When the water level drops below minimum, the low water alarm will flash and make a beeping sound for 30 times, the pump will automatically stop, and can't be powered back on until you refill the water reservoir.

4.Timer button: Adjust the Timer from 0-12H.

5. Pad Dry button: PAD DRY: In any mode, press this button to enter the pad dry mode. It will clear all settings, only the fan will run on in High speed for 15mins to dry the cooling pad and the LED display will show 015. The cooler will enter standby mode after the 15 minutes countdown ends.

NOTE :

1,PLEASE MAKE SURE THE BATTERY POWER IS ENOUGH BEFORE USINGTHE REMOTE.

2, PLEASE KEEP IT AWAY FROM THE HIGH-TEMP, WET OR FUMES AREA TOAVOID THE DAMAGE OF BATTERIES AND OTHER COMPONENTS.

3, PLEASE TAKE OUT THE BATTERIES IF NOT USE FOR A LONG TIME.

4, THIS DEVICE COMPLIES WITH PART 15 OF THE FCC RULES. OPERATIONIS SUBJECT TO THE CONDITION THAT THIS DEVICE DOES NOT CAUSE HARMFULINTERFERENCE.

FCC Statement

This equipment has been tested and found to comply with the limits for a Class B digital device, pursuant to part 15 of the FCC Rules. These limits are designed to provide reasonable protection against harmful interference in a residential installation. This equipment generates, uses and can radiate radio frequency energy and, if not installed and used in accordance with the instructions, may cause harmful interference to radio communications. However, there is no guarantee that interference will not occur in a particular installation. If this equipment does cause harmful interference to radio or television reception, which can be determined by turning the equipment off and on, the user is encouraged to try to correct the interference by one or more of the following measures:

- Reorient or relocate the receiving antenna.
- Increase the separation between the equipment and receiver.
- Connect the equipment into an outlet on a circuit different from that to which the receiver is connected.
- Consult the dealer or an experienced radio/TV technician for help.

Caution: Any changes or modifications to this device not explicitly approved by manufacturer could void your authority to operate this equipment.

This device complies with part 15 of the FCC Rules. Operation is subject to the following two conditions: (1) This device may not cause harmful interference, and (2) this device must accept any interference received, including interference that may cause undesired operation.

RF Exposure Information

The device has been evaluated to meet general RF exposure requirement.

The device can be used in portable exposure condition, compliance with exposure requirements.