

# 汽车灯 APP 使用说明书

产品名称	汽车灯
支持系统	安卓4.3及以上/iOS 8.0以上
信号方式	蓝牙4.0
输入电压	12 V
用途	可商用

## 一、产品介绍

### 1.1概述

汽车灯是一款用苹果或安卓手机控制 LED 灯带的手机 APP 程序。手机控制方式取代了传统的红外、433、2.4G 等老旧的遥控器的控制方式，方便快捷、功能强大且扩展性强！通过手机 APP 就智能控制 LED 灯带的色彩、亮度、色温，还可以设置各种花样的闪动模式，更可以使 LED 灯带随音乐节奏进行律动。只需要保持 LED 灯带通电，打开手机汽车灯 APP 智能控制软件，通过蓝牙连接一个或多个 LED 灯带，从而实现对多个 LED 灯带的各种设置和控制。操作非常简单，易学易用！

### 1.2性能

汽车灯 APP 具有良好的易用性和兼容性，几百部手机的实际测试验证，兼容目前市场上95%以上的手机。APP 小巧便捷，占用系统资源少，对手机配置要求低。控制延迟小，操作手感好，灯控视觉感觉平滑度高。

## 二、使用方法

注：安卓 版本和 iOS 版本下载及使用方法基本相同，在此以安卓版本为例进行说明。

### 2.1APP 下载

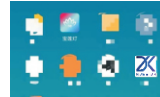
iOS 和 Android 系统，均可通过扫描二维码下载“汽车灯”APP。打开带有“扫一扫”功能的浏览器、QQ、微信等程序工具，扫描“汽车灯”二维码。



软件安装下载成功后点击 APK 安装，安装完毕后在桌面上出现以上样式的程序图标。

### 2.2 软件运行

1、点击汽车灯 APP 图标，进入 APP 页面：



2、进入 APP 界面后，若未开启蓝牙则会弹出“某个应用想要开启此设备的蓝牙功能”点击【允许】



3、切换到调色界面：



4、点击设备列表查看设备：



5、点击RGB调节按钮，进入手动调节RGB值界面：



6、切换到模式界面：



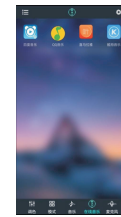
9、切换到定时界面：



7、切换到音乐界面：



8、切换到在线音乐界面：



10、切换到麦克风律动界面：



通过手机麦克风/产品上的麦克进行音乐律动

# Car Lights APP Manual

Product name	Car Lights
Support system	Android 4.3 and above / IOS 8.0 and above
Signal mode	Bluetooth 4.0
Input voltage	12 V
Use	Commercial

## 一、Product Description

### 1.1 Overview

Car Lights is a mobile APP program that uses an Apple or Android mobile phone to control LED strips. The mobile phone control method replaces the traditional infrared, 433, 2.4G and other old remote control methods, which is convenient, fast, powerful and extensible! The color, brightness, and color temperature of the LED light strip can be intelligently controlled through the mobile phone APP, and various flashing modes can be set, and the LED light strip can be rhythmic with the rhythm of the music. You only need to keep the LED light strips powered on, open the mobile phone Car Lights APP intelligent control software, and connect one or more LED light strips via Bluetooth, so as to realize various settings and control of multiple LED light strips. The operation is very simple, easy to learn and use!

### 1.2 Performance

The Car Lights APP has good ease of use and compatibility. The actual test and verification of hundreds of mobile phones is compatible with more than 95% of the mobile phones currently on the market. The APP is small and convenient, occupies less system resources, and has low requirements for mobile phone configuration. The control delay is small, the operation feel is good, and the light control has a high visual feel.

## 二、Instructions

Note: The Android version and iOS version are basically the same for downloading and using. Here, the Android version is used as an example for explanation.

### 2.1 APP Download

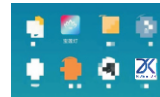
Both iOS and Android systems can download the "Car Lights" APP by scanning the QR code. Open the browser, QQ, WeChat and other program tools with the "scan" function, and scan the "Car Lights" QR code.



After the software is successfully installed and downloaded, click APK to install. After the installation is complete, the above style program icon will appear on the desktop.

### 2.2 Software Running

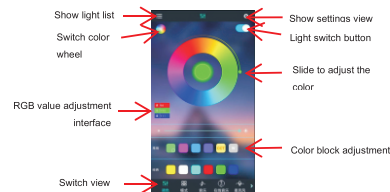
1. Click the icon of "Car Lights" APP to enter the APP page:



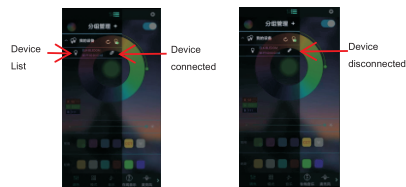
2. After entering the APP interface, if Bluetooth is not turned on, it will pop up "An application wants to turn on the Bluetooth function of this device" Click [Allow]:



3. Switch to the color palette interface:



4. Click on the device list to view the device:



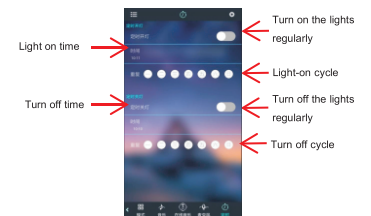
5. Click the RGB adjustment button to enter the manual adjustment RGB value interface:



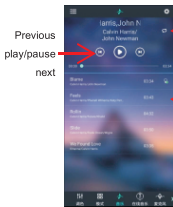
6. Switch to the mode interface:



9. Switch to the timing interface:



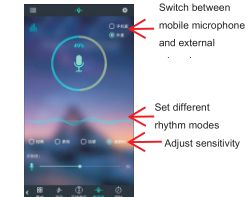
7. Switch to the music interface:



8. Switch to the online music interface :



10. Switch to the microphone rhythm interface:



Music rhythm through mobile microphone / the microphone on the product.

## // installation steps //



1. Jack up the car.



2. Clean the dust before installing.



3. Peel off the tape cover and stick it to the car.



4. Open the inner fender and hide the extension cable.



5. Use the zip tie to tie up the extra cable and hide it.



6. Connect the strips to the controller (arrow to arrow).



7. Make the controller's power cord through the bottom of the car to the battery.



8. Connect the controller's power cord to the position of fog light. Red wire-Positive, black wire-Negative.



9. Test result. Use the buckles and screws to strengthen the firmness. Complete the installation.

Easy to install on your car

Be sure to clean mounting areas before sticking for a better hold. Use zip ties in every opportunity for more security and to tighten up any wires.

If the weather is very cold, it is recommended to blow the hot adhesive with a hair dryer before sticking it, and use as many light strip clips to fix the light strip as possible to ensure safety.

Facile da installare sulla vostra auto

Assicurarsi di pulire le aree di montaggio prima di attaccare per una presa migliore. Utilizzare cravatte zip in ogni

opportunità di maggiore sicurezza e di stringere eventuali fili.

Se il tempo è molto freddo, si consiglia di soffiare l'adesivo caldo con un asciugacapelli prima di

Fissarlo e utilizzare il maggior numero possibile di clip per strisce leggere per fissare la striscia luminosa per garantire la sicurezza.

Einfach an Ihrem Auto zu installieren

Achten Sie darauf, die Montagebereiche vor dem Kleben für einen besseren Halt zu reinigen.

Verwenden Sie Reißverschlüsse bei jeder Gelegenheit für mehr Sicherheit und zum Festziehen von Kabeln.

Wenn das Wetter sehr kalt ist, wird empfohlen, den heißen Kleber mit einem Haartrockner zu blasen, bevor Sie ihn kleben, und verwenden Sie so viele Lichtstreifenclips, um den Lichtstreifen wie möglich zu befestigen, um die Sicherheit zu gewährleisten.

Facile à installer sur la voiture

Assurez - vous de nettoyer la zone de montage avant de coller pour une meilleure fixation.

Profitez de toutes les occasions d'utiliser des attaches à glissière pour améliorer la sécurité et resserrer les fils.

S'il fait froid, il est recommandé de souffler de l'adhésif chaud avec un sèche - cheveux avant de coller et de fixer le ruban avec autant de clips de ruban que possible pour assurer la sécurité.

Fácil de instalar en el automóvil

Asegúrese de limpiar el área de instalación antes de pegar para una mejor fijación. Aprovechar todas las oportunidades para usar correas de cremallera para mejorar la seguridad y apretar cualquier cable.

Si hace frío, se recomienda soplar el adhesivo térmico con un secador de pelo antes de pegarlo y sujetar el cinturón con el mayor número posible de clips de cinturón para garantizar la seguridad.

自動車への取り付けが容易

貼り付ける前に、取り付け領域をきれいにし、よりよく固定する必要があります。安全性を高め、電線を締め付けるために、あらゆる機会にファスナーテープを使用します。寒い場合は、貼り付ける前にドライヤーで接着剤を吹き付け、安全を確保するためにできるだけ多くのランプバンドを使用してランプバンドを固定することをお勧めします。

#### **FCC Warning**

This device complies with Part 15 of the FCC Rules. Operation is subject to the following two conditions:

(1) This device may not cause harmful interference, and (2) this device must accept any interference received, including interference that may cause undesired operation.

NOTE 1: This equipment has been tested and found to comply with the limits for a Class B digital device, pursuant to part 15 of the FCC Rules. These limits are designed to provide reasonable protection against harmful interference in a residential installation. This equipment generates, uses and can radiate radio frequency energy and, if not installed and used in accordance with the instructions, may cause harmful interference to radio communications. However, there is no guarantee that interference will not occur in a particular installation. If this equipment does cause harmful interference to radio or television reception, which can be determined by turning the equipment off and on, the user is encouraged to try to correct the interference by one or more of the following measures:

- Reorient or relocate the receiving antenna.
- Increase the separation between the equipment and receiver.
- Connect the equipment into an outlet on a circuit different from that to which the receiver is connected.
- Consult the dealer or an experienced radio/TV technician for help.

NOTE 2: Any changes or modifications to this unit not expressly approved by the party responsible for compliance could void the user's authority to operate the equipment.

#### **RF Exposure Statement**

To maintain compliance with FCC'S RF Exposure guidelines, This equipment should be installed and operated with minimum 20cm between the radiator and your body. This device and its antenna(s) must not be co-located or operation in conjunction with any other antenna or transmitter.