

User Manual for Canyon Power Supply GP0625-01

1	Content	
2	Introduction.....	3
2.1	About.....	3
2.2	Safety Instructions.....	3
2.3	Intended Use	3
3	Product Description.....	4
3.1	Overview.....	4
3.2	Technical Data.....	5
4	Operation.....	5
4.1	Lighting Control	5
4.2	Charging Functions	6
4.3	System Monitoring via Bluetooth.....	6
5	Care and Maintenance	7
6	Troubleshooting.....	7
7	Disposal and Recycling	8
8	Declarations of Conformity	8
8.1	CE Marking (EU).....	8
8.2	FCC Compliance Statement (USA)	8
8.3	Industry Canada (IC)	8
9	Technical Support and Customer Service	9
9.1	Contact Information	9
9.2	Warranty Terms	10

2 Introduction

2.1 About

This manual provides important information for the use and care of your Canyon Power Supply GP0625-01. Please read this manual completely before using it.

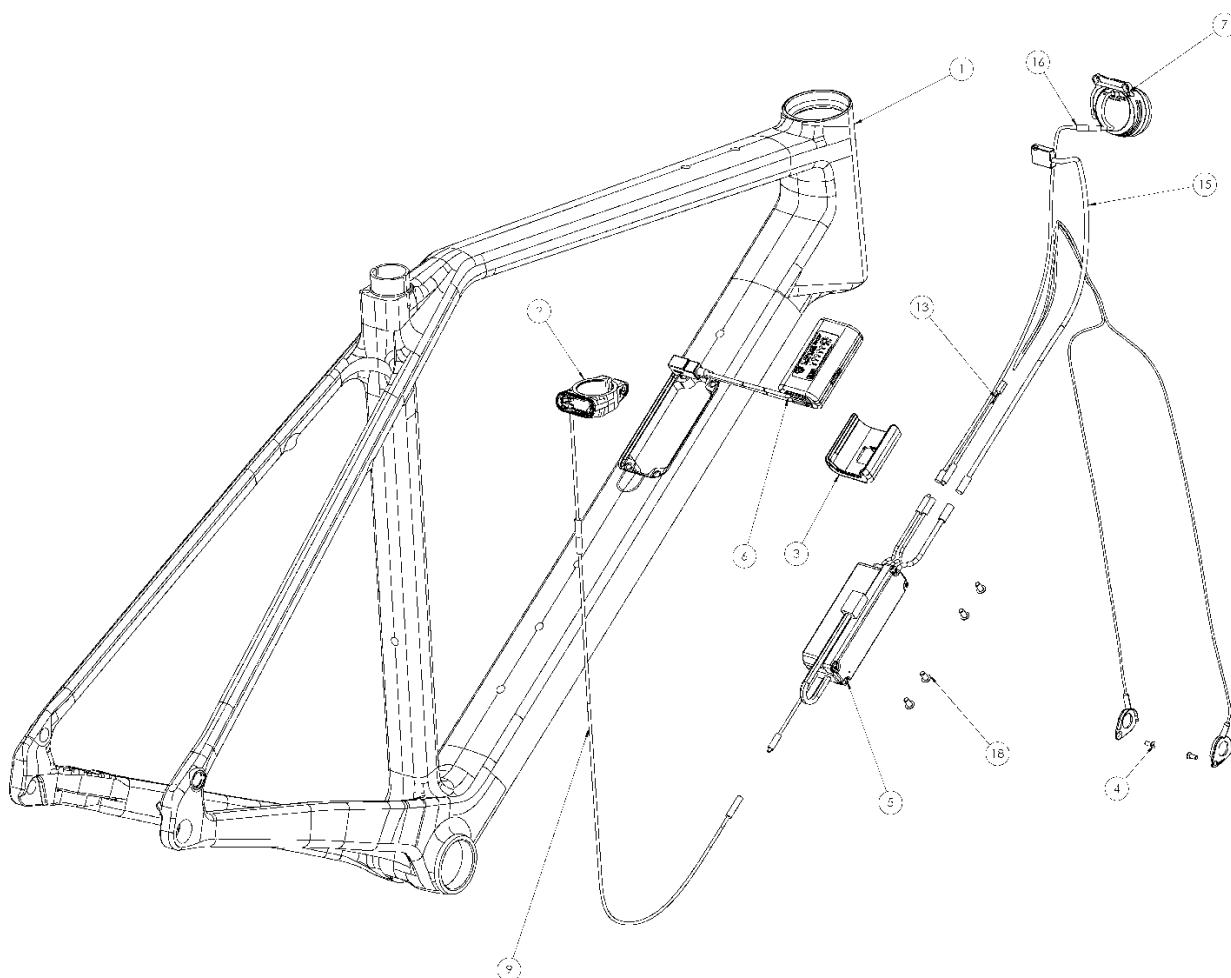
2.2 Safety Instructions

- Protect the Canyon Power Supply System from extreme temperatures (-10°C to +40°C).
- Use only approved USB Type-C chargers when charging with the built-in battery.
- Use only an original Lupine charger, e.g., Lupine Wiesel V6, when charging with the removed battery.
- Avoid direct water spray on electronic components.

2.3 Intended Use

The Canyon Power Supply System is designed and tested exclusively for use in the Canyon Grizl and to power its lighting system.

3 Product Description



Item No.	Part	Quantity
1	Grizl R126 Carbon Frame	1
2	GP0623-01 Rear Light Seat Post Clamp	1
3	Lupine Battery Holder	1
4	FK0144-01_A_009_Parts	1
5	GP0625-01_PCB_Housing_Long	1
6	Lupine 3,5Ah Battery	1
7	GP0541-01 Lupine SL Nano Front Set	1
9	Rear Light Extension Cable	1
13	Dynamo Cable	1
15	USB Cable	1
16	Front Light Extension Cable	1
18	Screw ISO 7380 – M4 x 8 – 8N	4

3.1 Overview

The system powers the front and rear lights and can charge mobile devices such as smartphones or bike computers bidirectionally. It is powered by the hub dynamo in the front wheel.

3.2 Technical Data

- Type: Lithium-ion battery
- Voltage: 7.2V
- Battery Capacity: 25 Wh
- Protection Class: IPX6 (waterproof)

4 Operation

4.1 Lighting Control

If the bike remains stationary for 5 minutes, the system enters sleep mode to save energy. The system is inactive. By turning the front wheel, you wake up the system, and it automatically switches to Eco mode - front and rear lights are on.

- Eco Mode:
 - Light button unlit → consumption 2.8 watts; daytime running light; recommended for daytime use A short press (< 1 sec) of the light button on the handlebar activates the standard mode. Pressing again (< 1 sec) switches between low beam and high beam.
- Standard Mode:
 - Light button glows green → consumption 5.8 W; low beam active; recommended for use at dusk and night
 - Light button glows blue → consumption 10 W; high beam active; recommended for use in poor visibility and/or darkness

A long press (> 3 sec) of the light button can deactivate the front light. The rear light remains on.

The rear light can be turned off by a short press (< 1 sec) of the button located below. Pressing again turns the rear light back on, provided the system is not in sleep mode.

4.2 Charging Functions

- Charging While Riding

The system's built-in battery is always charged while riding. At a speed of 15 km/h, the charging power is approximately 3 W. The maximum charging power is reached at around 25 km/h and is approximately 6 W.

The following overview provides an insight into the maximum lighting duration depending on the speed:

Device	Speed	Leuchtdauer
Front (Eco) and Rear Light (2,8W)	15 km/h	Lights will stay always on
Front and Rear Light (5,8W)	15 km/h	10,9 hours until the battery runs out
Front and Rear Light (5,8W) and battery to be charged (2,5W)	15 km/h	5,2 hours until the battery runs out
Front and Rear Light (5,8W) and battery to be charged (2,5W)	20 km/h	7,6 hours until the battery runs out

- Charging via USB Type-C

Above the head tube, there is a USB Type-C socket through which the built-in battery can be charged using approved USB Type-C chargers with a maximum power of 5 W. When the battery is depleted, the charging time is approximately 5 hours.

- Charging with the Battery Removed

The battery can be removed by disconnecting the plug connection and charged externally. To charge the battery in the removed state, a Lupine charger, e.g., Lupine Wiesel V6, is required. When the battery is depleted, the charging time is approximately 1 hour.

- Bidirectional Charging via USB Type-C

The USB Type-C interface can not only charge the built-in battery but also supply mobile devices such as smartphones or bike computers with up to 10 W of electrical power in the opposite direction. The lighting duration may be limited by charging mobile devices. The control electronics decide the charging direction depending on the state of charge.

4.3 System Monitoring via Bluetooth

Connect to the system via Bluetooth using the Canyon app on your smartphone to access additional functions. These include:

- Checking the battery level
- Remaining light duration based on current speed
- Connected USB devices
- System Health Status

5 Care and Maintenance

The battery and control electronics are integrated into the down tube of the bike. Although the Canyon Power Supply System is tested to protection class IPX6, the cover embedded in the down tube must be closed during cleaning. Do not use a high-pressure cleaner to clean your bike. Do not clean the bike upside down to ensure water can always drain through the designated drainage points.

The battery can be removed if dirty and carefully wiped with a damp cloth. Check the plug connection for possible damage and the contacts for corrosion.

6 Troubleshooting

Issue	Possible Causes	Solution Measures
Immediate shutdown of light during night ride	The battery level is below 5% and the system tries to conserve power	1. Use the app to turn the lights on for the remaining battery capacity and cycle at a higher speed to generate more power 2. Connect a power bank to the USB-C port to recharge the system's battery
Quick system discharge	The battery will discharge completely if left for two weeks without charging or riding	1. Charge the system at least once a week and preferably before a long ride 2. Disconnect the battery if you want to store the bike for a long period
Delayed response on rear light after turn off	The system will switch off the rear light automatically if the bike is not moving for 10 minutes	Use the rear light button to switch it off completely.
System doesn't charge over USB	Possible dirt or water inside the USB connector USB cable has physical damage	1. Clean and dry the USB connector before replugging a power source or a device 2. Check the cables if you have removed the device and reinstalled it 3. Test the charger and USB cable with another device for possible malfunctions
Can't connect to the system over the app	Battery is completely empty	Charge the battery via USB-C or start riding the bike.

Issue	Possible Causes	Solution Measures
Lights don't turn on	Battery state of charge is less than 5% or completely empty	Charge the battery via USB-C or start riding the bike. Once the dynamo charges the battery above 10%, the lights will turn on
System doesn't charge from dynamo	Possible loose cables	<ol style="list-style-type: none"> 1. Check the cables if you have removed the device and reinstalled it 2. Make sure that the battery is connected properly.

7 Disposal and Recycling

Do not dispose of the battery or other electronic components in household waste; always follow your local regulations.

If you are unsure, contact our service hotline or use the contact form on our website www.canyon.com.

8 Declarations of Conformity

8.1 CE Marking (EU)

The system complies with all relevant European directives and is CE certified.

8.2 FCC Compliance Statement (USA)/ Industry Canada (IC)

Changes or modifications not expressly approved by the party responsible for compliance could void the user's authority to operate the equipment.

This device complies with part 15 of the FCC Rules for Intentional Radiators and with ISSED license-exempt RSS(s).

Operation is subject to the following two conditions:

1. This device may not cause harmful interference.
2. This device must accept any interference received, including interference that may cause undesired operation.

Cet appareil est conforme aux normes RSS exemptes de licence d'Industrie Canada. Son fonctionnement est soumis aux deux conditions suivantes :

- 1- Cet appareil ne doit pas causer d'interférences
- 2- Cet appareil doit accepter toute interférence, y compris les interférences pouvant provoquer un fonctionnement indésirable.

RF exposure safety

This device complies with the FCC and ISED RF exposure limits and has been evaluated in compliance with portable exposure condition.

To comply with the measured SAR value/SAR testing exclusion, the equipment must be installed and operated with a minimum distance of 1 cm of the human body. To achieve this distance, the use of the device inside the bike frame is mandatory.

Class B device notice

Note: This equipment has been tested and found to comply with the limits for a Class B digital device, pursuant to part 15 of the FCC. These limits are designed to provide reasonable protection against harmful interference in a residential installation. This equipment generates, uses and can radiate radio frequency energy and, if not installed and used in accordance with the instructions, may cause harmful interference to radio communications. However, there is no guarantee that interference will not occur in a particular installation. If this equipment does cause harmful interference to radio or television reception, which can be determined by turning the equipment off and on, the user is encouraged to try to correct the interference by one or more of the following measures:

- Reorient or relocate the receiving antenna.
- Increase the separation between the equipment and receiver.
- Connect the equipment into an outlet on a circuit different from that to which the receiver is connected.
- Consult the dealer or an experienced radio/TV technician for help.

This Class B digital apparatus complies with Canadian ICES-003.

9 Technical Support and Customer Service

9.1 Contact Information

EDITOR/MANUFACTURER:

Canyon Bicycles GmbH
Karl-Tesche-Straße 12
56073 Koblenz

MANUFACTURER UNITED STATES:

Canyon Bicycles USA, Inc.
5600 Avenida Encinas
Carlsbad, CA 92008, USA

DE	(+49) 261 9490 3000	UK	(+44) 3331501967	AU	(+61) 1 300 712 003	NZ	(+61) 3 9771 261607
-----------	---------------------	-----------	------------------	-----------	---------------------	-----------	---------------------

FR	(+33) 890 710 132	ES	(+34) 910470740	IT	(+39) 045515527	NL	(+31) 40 - 808 0485
BE	(+32) 16 98 03 99	PT	(+351) 308813087	DK	(+45) 88741040	FI	(+358) 942 457 777
CZ	(+420) 226 259 001	SK	(+421) 220 510 450	AU	(+48) 918 288 008	SE	(+46) 105551996
N O	(+47) 69676050	JP	(+81) 6-4560- 5500	KO	(+82) 26 105 4040	US	(+1) 833 226 9661

9.2 Warranty Terms

The 6-year warranty applies to technical parts from Canyon. It starts on the day the bike is delivered and runs concurrently with the warranty. It does not apply to third-party components. The warranty covers only material and workmanship defects that were present at the time of delivery. It applies only to the original owner of the bike and is non-transferable. If replacement parts are not available in your original color, an alternative will be offered. If the warranty does not apply to you or you are unsure about a problem, you can also take your bike directly to a Canyon authorized service partner for inspection. The Canyon brand batteries in some of our bikes are covered for only 2 years or 500 charge cycles, whichever comes first. The batteries are designed to retain up to 70% of their original capacity within this period.