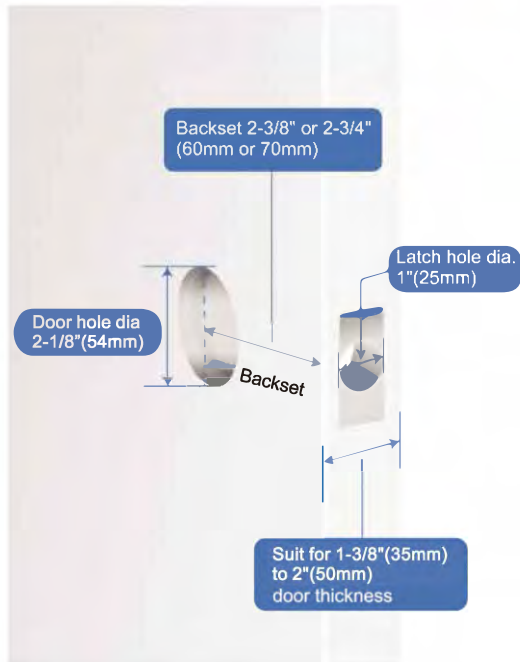


User Manual



Installation Dimension



Packing List



Exterior Assembly



Interior Assembly



Screwdriver x1



Card x2



Mounting Plate x1



Adjustable latch x1



Keys x2



3/10" (8mm)
screws x2



3/4" (20mm) 4 Screws



1-3/8" (35mm)
screws x2



Strike box x1

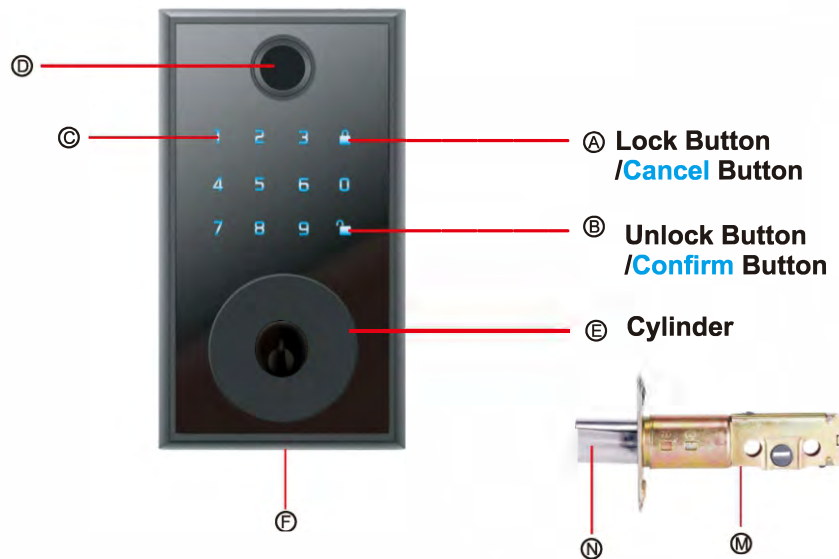


Strike Plate x1

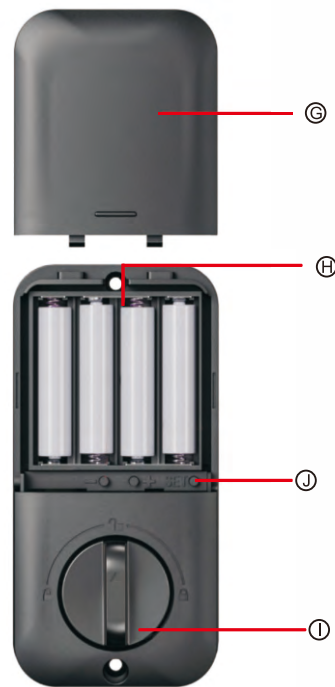
★ NOTE: usually 35mm screws on the back of the exterior assembly)

Programming and Operating Instructions

Operational Interface



- ① Lock Button/Cancel Button
- ② Unlock Button/Confirm Button
- ③ Number Buttons
- ④ Fingerprint reader
- ⑤ Cylinder
- ⑥ Powered by USB
- ⑦ Latch
- ⑧ Latch tongue



- ⑨ Battery Lid
- ⑩ Battery Holder
- ⑪ Reset Button
- ⑫ Turn Piece

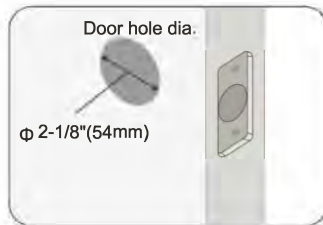
Specifications

No.	Name	Parameter Description
1	Operating Voltage	6.5V - 4.0V
2	Working Current	4mA-800mA
3	Stand-by Current	30 μ A-50 μ A
4	Programming Code	1
5	One-time Code	1
6	Anti-peeping Password	1
7	Low voltage alarm	4.3V
8	Password & fingerprint & IC card	50
9	Battery Life Time	4 AA Alkaline batteries, 12 months
10	Password Digital	6-10 Digitals

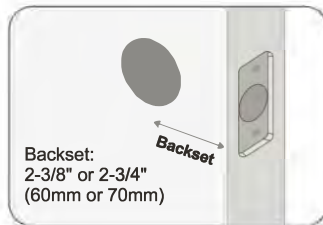
Tools to Prepare

Drill	Pencil	1"(25mm) Drill Bit	Phillips Head Screwdriver	Hammer
Chise	Tape Measure	1/16"(2mm) Drill Bit	2-1/8"(54mm) Drill Hole Saw	

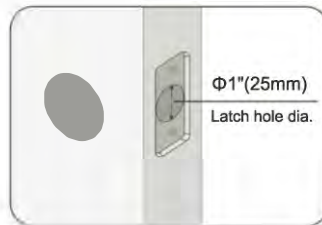
Step 1: Drill holes into Door



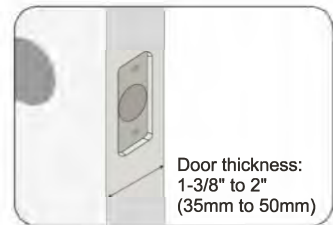
- ① Measure and check that the diameter of the hole in the door is 2-1/8" (54mm)



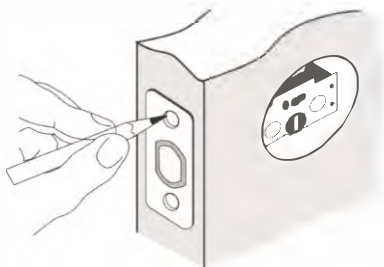
- ② Measure and check that the backset if either 2-3/8" or 2-3/4" (60mm or 70mm)



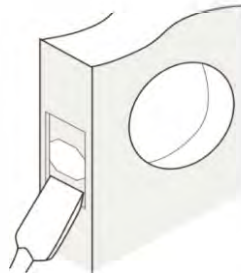
- ③ Measure and check that the diameter of the side hole in the door is 1" (25mm)



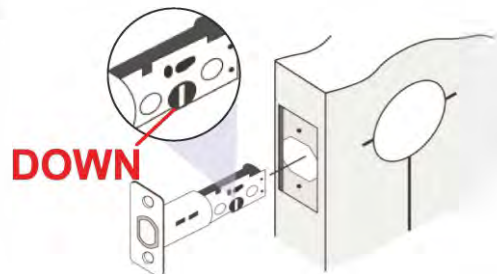
- ④ Mark for 1-3/8" to 2" (35mm to 50mm)



Insert the latch and ensure it is parallel to the face of the door. Mark the outline of the face plate, and then take out the latch



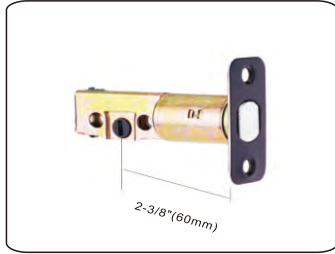
Chisel 5/32" (4mm) deep along the outline to let the face plate of the latch and the side of the door flat



Insert the latch into the door

Step 2: Adjustable Latch length

The default latch backset is 2-3/8"(60mm). If backset needs to be adjusted to 2 3/4"(70mm), please follow the steps below to adjust.



Please confirm if the latch needs to be adjusted to the 2-3/8"(60mm) backset.



If need to adjust, you can rotate the latch until it stops, then pull it and it will be adjusted to 2-3/4"(70mm).

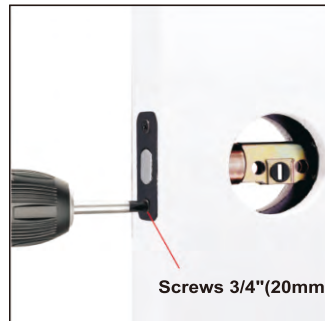


The backset of this latch is 2-3/4"(70mm) at now.



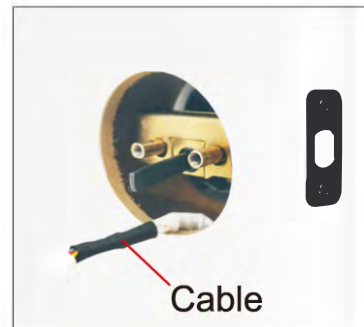
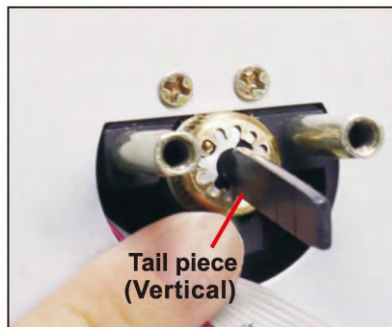
If you want to adjust the backset of the latch from 2-3/4"(70mm) to 2-3/8"(60mm). You only need to reverse the operation to return to the 2-3/8"(60mm) backset.

Step 3: Install Deadbolt Latch



Use two 3/4"(20mm) screws to tighten the latch into the door. Do not over-tighten

Step 4: Install the Exterior Assembly



Note: Tail piece must be installed vertically.

Step 5: Install the Mounting plate

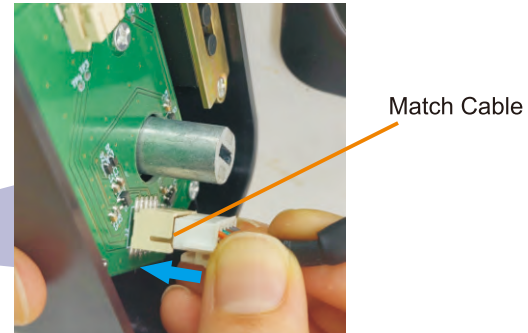


Use two piece screws to install the Mounting plate

2 pcs 1-3/8"(35mm) long screws

Step 6 :Install the Interior Assembly

⚠ DO NOT install AA alkaline batteries before the smart lock is installed.



Preparing the Interior Assembly. Set the turn piece to a vertical position, connect the cable, and then buckle the Interior Assembly onto the mounting plate

Step 7: Install the Screws of the Interior Assembly



3/10" (8mm) Screws

Step 8: Installing Batteries (4 PCS AA Alkaline batteries)



Before installing four Alkaline battery , make sure that the latch tongue is retracted. If the latch tongue is not retracted, rotate the Turn Piece to retract the latch tongue before installing the battery.



(4 PCS AA Alkaline batteries)



Note: 1. Do not use rechargeable batteries or non-alkaline batteries.

2. After the battery is installed successfully, the door lock automatically recognizes the right hand and left hand. No other operations are required.

Step 9: Testing Lock




The default password for factory mode is 123456 and any fingerprint can be unlocked.



A. Testing password unlocking

①  ➡ ② Press default PC “123456” ➡ ③ Press  to unlock

B. Testing fingerprint unlocking

①  ➡ ② Press the fingerprint reader with any finger to unlock

C. Testing keys unlocking

①  ➡ ② IC facing card

D. IC card unlocking

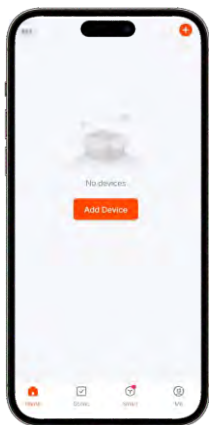
①  ➡ ② Testing keys

Tuya Smart App Operation

I .Scan the given QR code with your smart phone to download the APP.



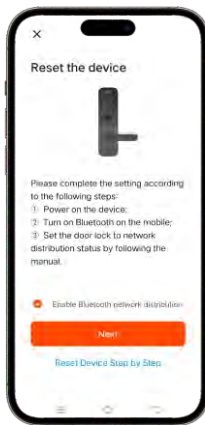
II .Add The Door Lock



① Press "Add Device"



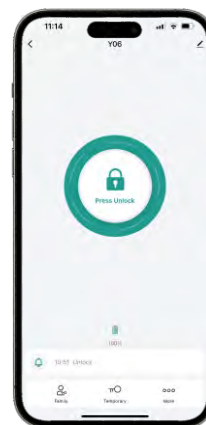
② Press "Camera&Lock"
"→"Lock(BLE)"



③ Press "√"→"Next"



④ "Y06"
Press "Done"

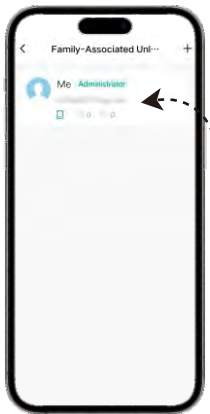


⑤ Long press "Press"to
unlock the door lock

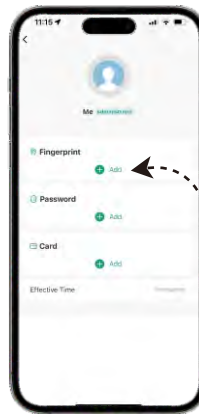
III.Add and Delete Fingerprint



① Press "Family"



② Press "Me"



③ "Fingerprint" -> Press "Add"



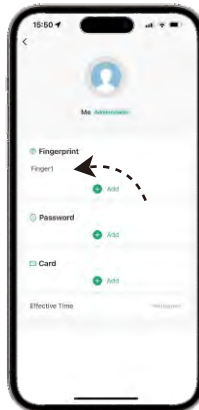
④ Press "Add"



⑤ Place your finger on the fingerprint recognition area of the lock



⑥ Set "Fingerprint Name" -> "OK"

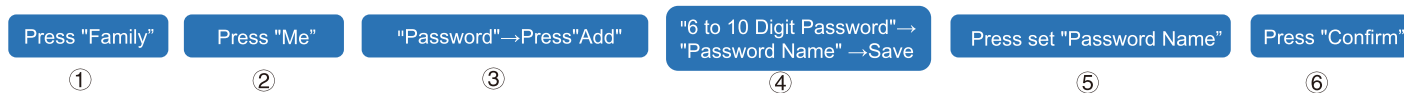


⑦ Press Set "Fingerprint Name"

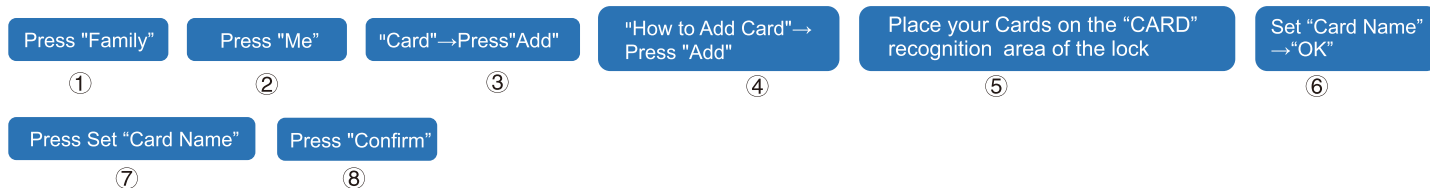


⑧ Press "Confirm"

IV.Add and Delete Password



V.Add and Delete Card



VI.Add Temporary



VII.Set and Cancel Auto Lock

The default automatic locking time of the factory system is 15S



① Press "More"



② Press "Auto Lock "

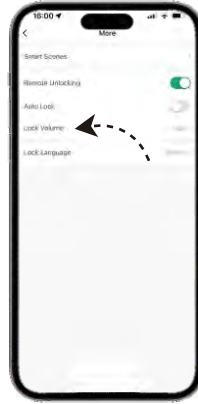


③

VII.Set and Cancel Lock Volume



① Press "More"

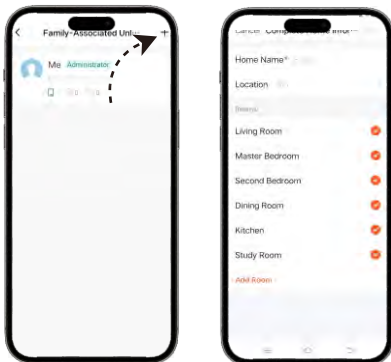


② Press "Lock Volume "



③

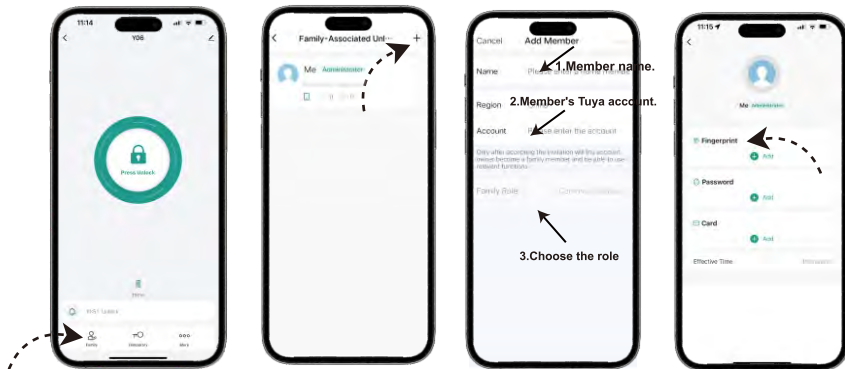
VIII. Add Members



①

②

When you add your first family member, the APP will ask you to create a family first and then add member. The member's TuyaSmart account will receive the invitation, and it will appear in the family members after acceptance.



①

②

③

④

You can add, invite and delete members, and edit members' permission in the page of "Home Settings"

Local Setting Operation

I Adding Programming Code (PC)

A.Settings Fingerprint



① Press  2 times ② Press PC (fingerprint 6 times) ③ Press  to exit

B.Touch Screen Digital Settings



① Press  2 times ② Press PC (112233) ③ Press  ④ Press PC "112233" again ⑤ Press  ⑥ Press  to exit

II Adding User Codes

A.Settings Fingerprint: ① Press  2 times ➡ ② Press PC ➡ ③ press UC (Fingerprint 6 times) ➡ ④ Press  to exit

B.Touch Screen Digital Settings: ① Press  2 times ➡ ② Press PC ➡ ③ Press UC (445566) ➡ ④ Press 

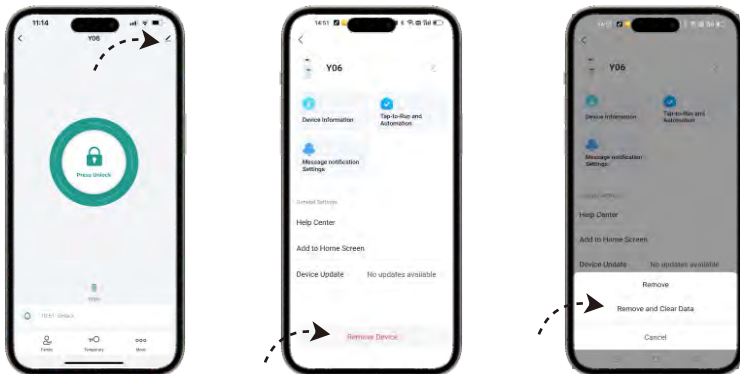
➡ ⑤ Press UC (445566) again ➡ ⑥ Press  ➡ ⑦ Press  to exit

C.Settings IC: ①Press  2 times ➡ ② Press PC ➡ ③Press UC (IC card-CARD) ➡ ④ Press  to exit

D.Settings APP: ①Press  2 times ➡ ② Press PC ➡ ③Press UC (Tuya Smart App) ➡ ④ Press “Add Device”

Restore Factory Settings

I Tuya Smart App



II Local Setting Operation



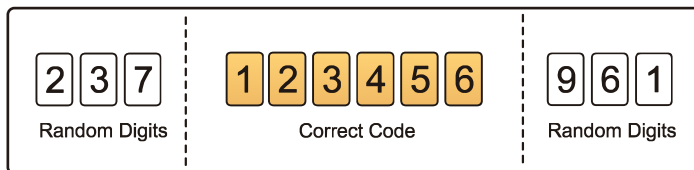
 Long press “SET” button for 6 seconds until hear the tone, reset successful.

 After restore factory settings, all previous Programming Code(PC), User Code(UC)and fingerprint will be deleted.

Other Functions

1. Anti-peeping Password

You can enter random numbers before and after the correct password to confuse the judgment.



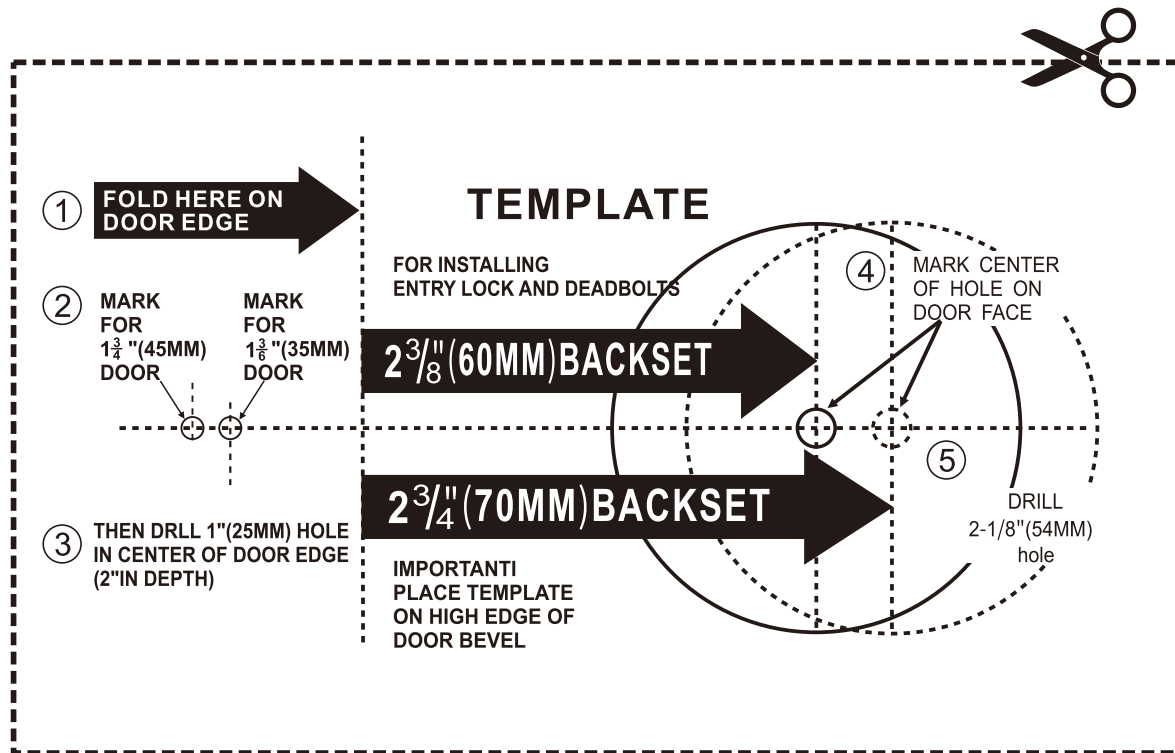
2. Low Battery Warning

When the battery is lower than a certain value, the product will issue 3 prompt tones after opening the lock normally and the front light will become red.

3. Wrong Code Alarm

If the password is incorrectly entered for 6 consecutive times or the fingerprint is incorrectly entered for 11 consecutive times, the alarm will be generated, and the screen will be automatically locked for 2 minutes. At this time, the battery can be unlocked by directly pulling out the rear shell.

Template



FCC Warning

This device complies with Part 15 of the FCC Rules. Operation is subject to the following two conditions:

(1) This device may not cause harmful interference, and (2) this device must accept any interference received, including interference that may cause undesired operation.

NOTE 1: This equipment has been tested and found to comply with the limits for a Class B digital device, pursuant to part 15 of the FCC Rules. These limits are designed to provide reasonable protection against harmful interference in a residential installation. This equipment generates, uses and can radiate radio frequency energy and, if not installed and used in accordance with the instructions, may cause harmful interference to radio communications. However, there is no guarantee that interference will not occur in a particular installation. If this equipment does cause harmful interference to radio or television reception, which can be determined by turning the equipment off and on, the user is encouraged to try to correct the interference by one or more of the following measures:

- Reorient or relocate the receiving antenna.
- Increase the separation between the equipment and receiver.
- Connect the equipment into an outlet on a circuit different from that to which the receiver is connected.
- Consult the dealer or an experienced radio/TV technician for help.

NOTE 2: Any changes or modifications to this unit not expressly approved by the party responsible for compliance could void the user's authority to operate the equipment.

RF Exposure Statement

To maintain compliance with FCC'S RF Exposure guidelines, This equipment should be installed and operated with minimum 20cm between the radiator and your body. This device and its antenna(s) must not be co-located or operation in conjunction with any other antenna or transmitter.