

# **WIRELESS CONVERSION BOX**

INTERCONNECTION OF LOCOMOTIVES

**User Manual**



## **Welcome to use**

Welcome to use our [wireless conversion box] product. Before using this product, please make sure that your car supports Apple Carplay, which will bring you a new wireless connection experience.

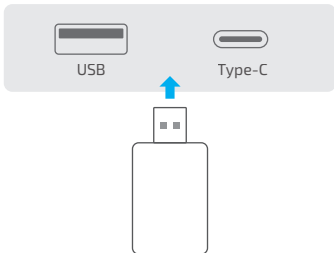
# Carplay Wireless Conversion Box

Product model: cht-cp01

**Note: cht-cp01 Car-machine interconnection wireless conversion box only supports iPhone!!!**

## 1. Product installation

Please insert the wireless conversion box into the "USB" or "Type-C" port of your car, which is usually under the car central control screen or in the car armrest box.



## 2. Self-inspection identification

The car central control automatically recognizes the wireless conversion box, and the indicator light of the conversion box will light up until the connection prompt interface pops up on the car central control screen (if individual car central control cannot automatically recognize it, you need to manually click the mobile phone interconnection function circle mark on the screen).

According to the prompt information, prepare the mobile phone to connect with it.

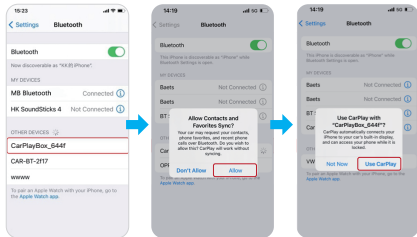


Use iPhone Bluetooth Connect to CarPlayBox\_debf

if the carplay connection times out, please ignore the Bluetooth and re-pair

### 3. Paired connection

Before pairing the mobile phone with the wireless conversion box, please delete the pairing between the mobile phone and the Bluetooth in the original car to avoid interference. Please use the Bluetooth name of your mobile phone to search for a match of "CarPlayBox", and click [Match] > [Allow] > [Use Carplay] to match the connection according to the prompt, and then you can use it normally.



# For Carplay Wireless Adapter Android Auto 2 in 1 item

Product model:cht-cp-AA01

**Note:** Only works for original Car screen with wired Carplay,Modified Android radio is not compatible (Even though it has Wired Carplay functionality it is not compatible with box)

If you need to switch from wireless Carplay to wireless Android Auto function Please use your Android phone to connect the Bluetooth name of the device. After the connection is successful, wait for the device to automatically reset and restart. The process will take about 30 seconds. Keep it powered on.Carplay will switch to Android Auto functionality.

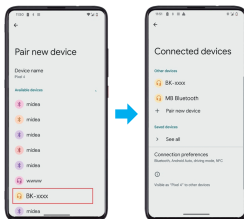
## Step 1

Insert the product into the USB port inside the car.



## Step 2

Turn on WIFI and Bluetooth on iPhone/Android phone

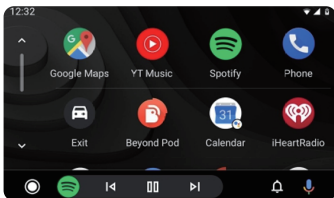


### Step 3

After connection, wait for the car to start and automatically connect to wireless Carplay/wireless Android.



CarPlay



Android Auto



## Precautions:

### About OTA upgrade

In order to bring you better abdominal examination, this product supports OTA online upgrade function. When the wireless conversion box can't be used normally or there are performance problems after upgrading the system of the mobile phone, it is necessary to upgrade the firmware of the wireless conversion box to the latest version. If the wireless switch box works normally, usually no upgrade firmware is built.

#### Upgrade method

##### 1. Visit the background page

Please use the wireless conversion box Wifi:"Car-PlayBox"to enter the password:" 88888888" ,open the Safari browser of iPhone, enter the IP address: "192.168.2.1" ,and click "Visit" or "Go" to enter the online upgrade background. (If you can't get in,

please check whether the mobile phone's Wifi is connected to the wireless conversion box correctly and quickly. )

## 2. Firmware Upgrade or Downgrade

Will check whether there is a new version of firmware online after entering the background page. If prompted "New version found", click "Upgrade" until the upgrade is completed; If the system prompts "It is the latest version". there is no need to upgrade the firmware, or click "version history" to select the blue firmware version for online upgrade.

### Note:

1. Please insert the wireless conversion box into the ordinary charging USB port to upgrade or downgrade the firmware, and do not power off or plug the wireless conversion box during this period.

2. If the upgrade is abnormal, please turn off the

power to automatically power off the USB port, and then try to upgrade or downgrade again.

3. After the upgrade or downgrade is completed, the wireless switch box is re-adapted to the USB data port in the central control of the car. At this time, the borrowing number has been updated randomly, and it is necessary to reoperate the Bluetooth and Wifi connection in the mobile phone.

# About RGB Lighting Adjustment

1. Visit the background page, please use the wireless conversion box Wifi: "CarPlayBox" to enter the password: " 88888888" ,open the Safari browser of iPhone, enter the IP address: "192.168.2.1" ,and click "Visit" or "Go" to enter the online upgrade background. (It you can't gel in, please check whether the mobile phone's Wifi is connected to the wireless conversion box correctly and quickly. )

2. After entering the background page, you can adjust the light display in the function settings.

Note:

The wireless adapter needs to be plugged and unplugged again every time the light display is adjusted.

# Technical Parameter

Product name: Wireless Conversion Box

Working current: 500mA

Rated voltage: < 5V

Input port: USB or TypeC-C

Implementation standard: GB4943.1-2011

## FCC Warning

This device complies with Part 15 of the FCC Rules. Operation is subject to the following two conditions:

(1) This device may not cause harmful interference, and (2) this device must accept any interference received, including interference that may cause undesired operation.

NOTE 1: This equipment has been tested and found to comply with the limits for a Class B digital device, pursuant to part 15 of the FCC Rules. These limits are designed to provide reasonable protection against harmful interference in a residential installation. This equipment generates, uses and can radiate radio frequency energy and, if not installed and used in accordance with the instructions, may cause harmful interference to radio communications. However, there is no guarantee that interference will not occur in a particular installation. If this equipment does cause harmful interference to radio or television reception, which can be determined by turning the equipment off and on, the user is encouraged to try to correct the interference by one or more of the following measures:

- Reorient or relocate the receiving antenna.
- Increase the separation between the equipment and receiver.
- Connect the equipment into an outlet on a circuit different from that to which the receiver is connected.
- Consult the dealer or an experienced radio/TV technician for help.

NOTE 2: Any changes or modifications to this unit not expressly approved by the party responsible for compliance could void the user's authority to operate the equipment.

The device has been evaluated to meet general RF exposure requirement. The device can be used in portable exposure condition without restriction.