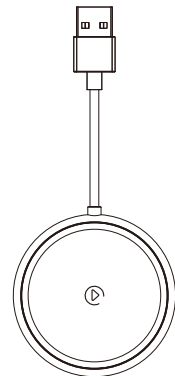


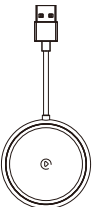
CarPlay Wireless Adapter Manual



Model: XG682

Product Specifications:

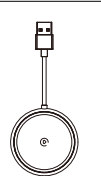
1. Input:5V/1A
2. Operating temperature:28° - 34°
3. Supported temperature:-20° to 75°
4. Support Phone: iPhone 8 or above



Product*1



Type-C to USB-A adapter



USER MANUAL*1

Function Intruduct

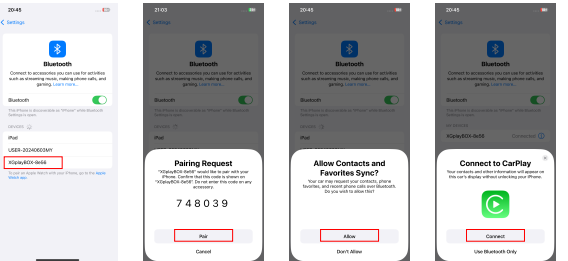
- 1.Product function: Convert the original car's wired CarPlay to wireless CarPlay.
- 2.Indicator light: After inserting the Carplay wireless adapter into the car computer and waiting for 6-10 seconds, the car computer screen will display the carplay adapter UI interface, on which you can see the Bluetooth name, version number and other information. This means that the carplay wireless adapter is communicating successfully with the current car computer, and the working indicator light will flash once per second.

- 3.Fault indicator light: After inserting the Carplay wireless adapter into the car computer and waiting for 6-10 seconds or longer, the indicator light of the Carplay wireless adapter is always green and the car computer does not display the Carplay wireless adapter UI interface. This means that the car computer is incompatible with this device, or the wireless adapter is faulty.
- 4.The network data generated by this function (including audio and video data, map data, call data, etc. all from the mobile phone) has nothing to do with this device.
5. Introduction to the function of the sound pickup light: The peripheral light of this product is RGB magic light, which cannot be turned on or off manually. When the product is powered on, the lights will be fully lit for a few seconds and then enter the sound check state. When a sound source approaches the product, the built-in microphone detects the sound and the light will dance rhythmically according to the pitch of the note.

How to use the product:

1. Please insert this product into the USB-A port with data transmission function in the car. Do not insert it into the cigarette lighter or other ports without data transmission function, which will directly cause the car computer to be unable to connect with the adapter. If the data transmission port on your car is a type_c port, please use the Type-C to USB-A adapter that comes with the product for transfer.
2. After the product is plugged into the car computer, wait for 6-10 seconds. When the working indicator light of the Carplay wireless adapter flashes normally and the car computer screen displays the UI interface of the Carplay adapter, it means that the Carplay adapter is successfully connected to the product.

3. Before using a mobile phone to connect to the CarPlay adapter, please check whether the mobile phone's WIFI and Bluetooth are connected to other wireless devices. If connected, you need to ignore and delete the current WIFI and Bluetooth, and turn on the mobile phone's Bluetooth and WIFI switches.
4. Turn on Bluetooth and search. Connect to the Bluetooth name displayed in the lower left corner of the UI interface: for example: XGplayBOX-XXXX, and pair. The relevant prompt will appear on the phone and follow the steps below.



BT Device: XGplay BOX-8e56
SW_Ver: 20241204119

5. When the mobile phone Bluetooth is successfully matched with the carplay adapter Bluetooth, please wait for a moment. It should be noted that the mobile phone WIFI only needs to turn on the switch, and no connection operation is required. When the carplay adapter is successfully connected to the mobile phone, the mobile phone and the box's WIFI will automatically establish a connection channel. At this time, the mobile phone Bluetooth will show disconnected, which is a normal phenomenon and no operation is required.
6. If the siri voice function on your phone is not turned on, please turn on the Siri voice function on your phone, otherwise the connection will fail.

Troubleshooting

1. Mobile phone compatibility judgment
(1) This product only supports iPhone 8 or above. Please check if your phone supports it. Check if your phone system is iOS10+ or above. You need to upgrade the system to the highest version.
2. Car-machine compatibility judgment
(1) Check whether the car system has wired carplay function.
(2) You can check whether your car supports the wired CarPlay function through the official website <https://www.apple.com/ios/carplay/available-models/>.
(3) Connect your iPhone to your car via a data cable to determine whether your car supports wired CarPlay.
3. Failure inspection for connection failure.
(1) Before connecting to Bluetooth, check whether the phone is connected to the Bluetooth and WIFI of other wireless devices. If connected, please ignore and delete it, otherwise it will cause connection failure. Keep Bluetooth off for 5 seconds, then reconnect Bluetooth.

- (2) If the connection fails, unplug the box and try again.
4. Other considerations
(1) If the phone pops up the "Allow CarPlay" prompt during the connection process, select "Later" and the connection will fail. You need to go to "General" = "CarPlay" on your phone, select "Device Name" = and turn on "CarPlay".
(2) To turn off the CarPlay function, you need to disconnect the Bluetooth and WIFI connection on your phone or unplug the box directly.
(3) If there is a connection problem, restart the car head unit or restore the car head unit to factory settings.
(4) After CarPlay is successfully connected, the Bluetooth on the phone will be disconnected from this device. This is normal.
(5) If the car cannot automatically reconnect, please delete the device's Bluetooth and WiFi from the phone's Bluetooth list and WiFi list, then search and connect to the device's Bluetooth again.
5. Troubleshooting by product indicator lights.
(1) After the adapter is powered on, the indicator light flashes, indicating that the device is normal.
(2) If the indicator light is always on or off, the product is faulty. Please contact the seller.

FCC Warning

FCC Warning Statement: Changes or modifications to this unit not expressly approved by the party responsible for compliance could void the user's authority to operate the equipment. This equipment has been tested and found to comply with the limits for a Class B digital device, pursuant to Part 15 of the FCC Rules. These limits are designed to provide reasonable protection against harmful interference in a residential installation. This equipment generates, uses and can radiate radio frequency energy and, if not installed and used in accordance with the instructions, may cause harmful interference to radio communications. However, there is no guarantee that interference will not occur in a particular installation. If this equipment does cause harmful interference to radio or television reception, which can be determined by turning the equipment off and on, the user is encouraged to try to correct the interference by one or more of the following measures:

- Reorient or relocate the receiving antenna.
- Increase the separation between the equipment and receiver.
- Connect the equipment into an outlet on a circuit different from that to which the receiver is connected.
- Consult the dealer or an experienced radio/TV technician for help.

This device complies with Part 15 of the FCC Rules. Operation is subject to the following two conditions: (1) this device may not cause harmful interference, and (2) this device must accept any interference received, including interference that may cause undesired operation.

FCC Radiation Exposure Statement
The device has been evaluated to meet general RF exposure requirement. The device can be used in portable exposure condition without restriction.

OTA online upgrade

During the use of this product, if there are no malfunctions or other related problems, it is not recommended to upgrade the product. If you need to upgrade, please use an Apple phone to connect to the adapter's WiFi, the WiFi name is: XGplayBOX-XXXX, and the WiFi password is 88888888. In the Safari browser, enter the website: 192.168.5.1 to search and update the software. This is only for iPhone. Note: Do not turn off the power during the upgrade process.



This symbol indicates that this product shall not be treated as house hold waste. Instead it shall be handed over to the applicable collection point for the recycling of electrical and electronic equipment.