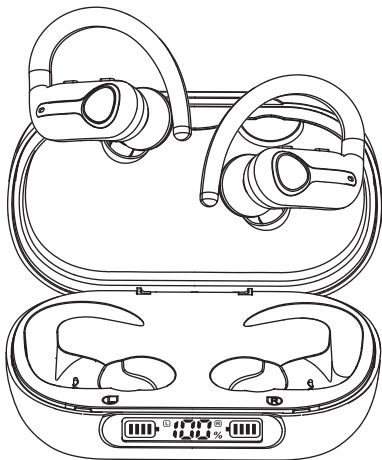




WIRELESS EARPHONES



USER MANUAL

Contents

English -----	01-11
Deutsch -----	12-22
Français -----	23-33
Italiano -----	34-44
Español -----	45-55

* Thank you for purchasing our **Wireless Earphones**. Please read the User Manual carefully before using it. For any questions and support, please feel free to contact us through amazon.

Packing List



2 * Earphones



6 * Ear tips



1 * Charging Case



1 * Type-C Charging Cable

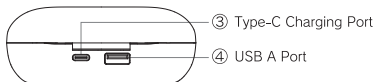
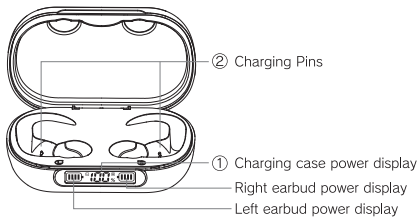


1 * User Manual

Specification

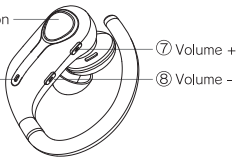
Product Name	Wireless Earphones
Model	S1
Version	V5.3
Operating Mode	Mechanical Button
Voltage Rating	3.7V
Battery Capacity of Charging Case	1800mAh
Battery Capacity of Earphones	50mAh (each)
Charging Time of Earphones	1~1.5 Hrs
Charging Time of Charging Case	3~4 Hrs
Music Playing Time	7~8 Hrs
Supporting Protocol	HSP/HFP/A2DP/AVRCP
Frequency	2.402 GHz - 2.480 GHz
Transmission Distance	Up to 10 m/33 ft (without obstacle)

Product Overview



⑥ Multi-functional Button (MFB)

⑤ Indicator Light



Key Functions

Power on/off

Power on	<p>Auto: Just open the charging case, and the earbuds will power on automatically.</p> <p>Manual: When the earbuds are OFF, long press the MFB of both earbuds for 3s until you hear the voice prompt of "power on".</p> <p>Tip: You will hear a voice prompt of "power on".</p>
Power off	<p>Auto: Put the earbuds into the charging case and close the case, the earbuds will power off automatically.</p> <p>Manual: When the earbuds are ON, long press the "MFB" button of both earbuds for 6s until you hear the voice prompt of "power off". The red indicator light will flash 3 times.</p> <p>Tip: You will hear a voice prompt of "power off".</p>

Calls Control

Answer/End Calls	<p>Press once one of the "MFB" button</p> <p>Tip: When a call comes, there is a voice prompt of "incoming call and phone number"; when you end a call, there is a voice prompt of "call ended"</p>
Reject Calls	<p>Quick press twice one of the "MFB" button</p> <p>Tip: When you reject a call, there is a voice prompt of "call rejected"</p>

Music Control

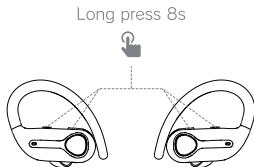
Play/Pause	Press the "MFB" button once to pause/play in the music state
Previous Track	Double-click the "-" button on either earbud
Next Track	Double-click the "+" button on either earbud
Volume Down	Click or long-press the "-" button of either earbud Tip: When the volume is set to minimum, there is a voice prompt of "volume minimum"
Volume Up	Click or long press the "+" button of either earbud Tip: When the volume is set to maximum, there is a voice prompt of "volume maximum"

Siri for iPhone

Activate Siri	Triple-click the "MFB" button of either earbud
---------------	------------------------------------------------

Resetting

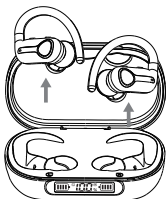
1. Keep pressing the button "+" and "-" of both earphones for 8s simultaneously in power on state. The red and blue lights flash 3 times, then the earbuds will power off;
2. Delete the "S1" record on your phone and deactivate the Bluetooth setting;
3. Put the earbuds back into the charging case;
4. Wait for 10s and then open the charging case and turn on the Bluetooth of your phone. Select "S1" and the earbuds will work properly.



How to Pair

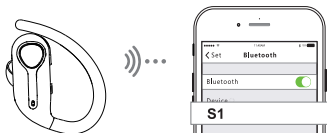
Stereo mode

1. Open the charging case, the two earbuds will automatically power on and connect to each other, and then enter into the pairing state. You will hear a voice prompt of "pairing".
2. Turn on the Bluetooth on your phone and select "S1". The earbuds will connect to your phone automatically. You will hear a voice prompt of "connected".



Mono Mode

1. Take one earbud (left/right) out of the charging case.
2. Turn on the Bluetooth on your phone and select "S1". The earbud will connect to your phone automatically.

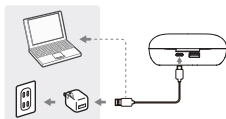


Note:

- * When there was a pairing record, the earbuds will automatically connect to the phone every time you use them in the future.
- * After the earbuds disconnect from the phone, they will automatically enter the pairing state and power off after 5 minutes if not connected to any device. You will hear a voice prompt of "disconnected".

How to Charge

Charge the Charging Case



Method: Use the type-c charging cable (provided) to connect your computer (with power on) or an adapter (not provided) to your charging case.

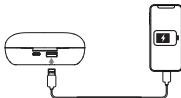
Charging State	number on the case flashes
Charging Complete	number stays on "100"

Note:

1. It's recommended that you use an adapter of 5V/1A or 5V/1.5A for charging.
2. When the charging case power reduces to 10% or below, the number on the charging case flashes, indicating that the case needs to be charged now.

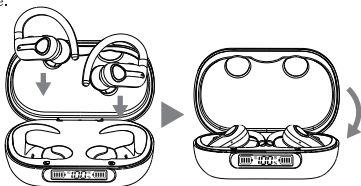
Charge Other Devices

Method: The charging case can be a portable power bank in an emergency. Use a charging cable to connect the USB A port and your phone for charging. Note: The type-c port only works for charging the charging case.



Charge the Earbuds

Method: Put the earbuds into the charging case and close the case.



Charging State	the progress bar on the charging case scrolls
Charging Complete	the battery bar stays still and disappears after 15 s

Note:

1. Please remove the insulating films on the earbuds' charging contacts before charging.
2. There will be a voice prompt of "Low Battery, Please Charge" every 30s and the red light slowly flashes if the battery percentage of the earbud reduces to 20%.

Warm Tips for Safe Use

- To protect your ears, please be careful not to turn up the volume too high. Please turn the volume down to the minimum before use. If there is a sudden loud sound, it may damage your hearing.
- When not in use, it is recommended to turn off the power of this product first. Otherwise, the product is constantly consuming power in response to connection requests from other Bluetooth devices.

- It's recommended to use the included charging cable to charge the case. Do not use other equipment as it may cause fire and malfunction.
- Be sure to unplug the charging cable after charging. Also, unplug the charging cable if the required charging time has not yet been completed. If charged for longer than the specified charging time, the built-in battery may generate heat, catch fire, or rupture. Also, it may affect battery life.
- When flammable items or liquids such as water splash inside, please stop using them and contact the store where you purchased it or our company. If you continue to use it, it may cause fire, malfunction, and electric shock.
- Please do not leave it under high temperature. This product is a precision electronic device. Avoid using and storing in places with high temperature, humidity, and prolonged direct sunlight. Also, if the ambient temperature changes greatly, internal condensation may cause malfunction.
- Never leave it in the car. If this product is left in a car at high temperature for a long time, it will cause the internal battery to rupture and cause fire or failure, which is very dangerous.
- In case of abnormality, such as an abnormal smell or smoke from this product, please stop using it immediately and turn off the power. If it is charging, please unplug the attached USB charging cable from the power socket. If you do not use this product any longer, please consult your dealer.
- When using it on foot, please pay full attention to the surrounding traffic to prevent traffic accidents.
- If you feel unwell while using this product, please stop using it immediately.
- Those who use medical devices such as cardiac pacemakers, please consult a doctor before use.

Troubleshooting

Question	Solutions
Cannot hear sound from the earbuds	<ol style="list-style-type: none"> 1. Make sure the earbuds have been powered on; 2. Make sure there is a successful connection between the earbuds and the phone; 3. Make sure that your phone is within a strong signal range and that there is no external interference; 4. Make sure that your phone is not connected to other devices; 5. Increase the volume on your phone.
The earbuds does not power on	<ol style="list-style-type: none"> 1. The battery of the earphone is low, please charge; 2. If problem still exists, please try to perform a factory reset.
The earbuds disconnect	<ol style="list-style-type: none"> 1. Make sure the earbuds have enough power because low battery will cause disconnection; 2. There is obstacle between the earbuds and the phone; 3. The distance between the earbuds and the phone is more than 10 m; 4. When the product is used in an environment with electromagnetic fields or radiation, the connection may be disturbed.
The charging case is not charging the earphones	<ol style="list-style-type: none"> 1. Make sure the charging case has power; 2. Make sure the earphones are properly placed in the case; 3. Check if there is dust on the charging ports and the charging case; If this happens, clean them with an alcohol pad or a soft and dry cloth.

This device complies with part 15 of the FCC Rules. Operation is subject to the following two conditions: (1) This device may not cause harmful interference, and (2) this device must accept any interference received, including interference that may cause undesired operation.

Any Changes or modifications not expressly approved by the party responsible for compliance could void the user's authority to operate the equipment.

Note: This equipment has been tested and found to comply with the limits for a Class B digital device, pursuant to part 15 of the FCC Rules. These limits are designed to provide reasonable protection against harmful interference in a residential installation. This equipment generates uses and can radiate radio frequency energy and, if not installed and used in accordance with the instructions, may cause harmful interference to radio communications. However, there is no guarantee that interference will not occur in a particular installation. If this equipment does cause harmful interference to radio or television reception, which can be determined by turning the equipment off and on, the user is encouraged to try to correct the interference by one or more of the following measures:

- Reorient or relocate the receiving antenna.
- Increase the separation between the equipment and receiver.
- Connect the equipment into an outlet on a circuit different from that to which the receiver is connected.
- Consult the dealer or an experienced radio/TV technician for help.

FCC Radiation Exposure statement

The device has been evaluatec to meel general RF exposure requirement. The device can be used in portable exposure condition without restriction.