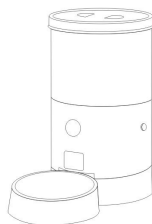


SMART VACUUM FEEDER

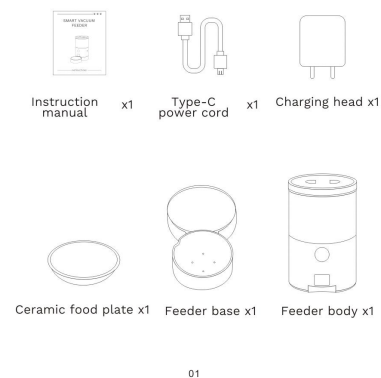


INSTRUCTIONS

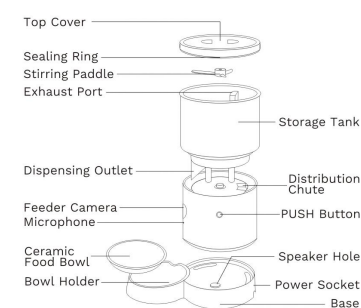
DIRECTORY

1. Product List	01
2. Product Introduction	02
3. Product Installation	03
4. Product Usage	04-05
5. Product Parameters	06
6. Precautions	06

1. PRODUCT LIST

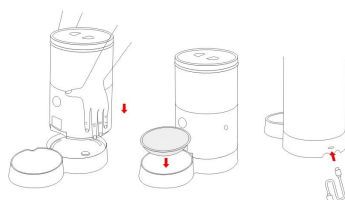


2. PRODUCT INTRODUCTION



3. PRODUCT INSTALLATION

1. Place the base on a flat surface.
2. Insert the main unit into the base.
3. Place the ceramic food plate onto the base.
4. Connect the power adapter to the charging port on the back of the main unit.



03

4. PRODUCT USAGE

- ① Open the top cover and add pet food.
It is recommended that the size of pet food or freeze-dried food be less than 16mm. Do not put in wet pet food to avoid blocking the food outlet and damaging the device.
- ② PUSH Button
(1) Short press once to manually dispense food.
(2) Long press for 3 seconds to turn on/off the machine. You will hear a "click" sound when turning on/off, and the machine will automatically perform the deflation work when turned off.
- ③ Long press for 7 seconds to reset WiFi/network settings. In 3 seconds there will be a "click" sound, please do not release, continue to hold down, and after hearing the second "click" sound, it will enter the network configuration mode.

04

- ④ Indicator Light
When WiFi is not connected, the WiFi light flashes; after successful connection, the WiFi light turns off.
- ⑤ Power Light
The power light stays on after powering up.
- ⑥ Vacuum Light
The vacuum light stays on during vacuuming; if vacuuming exceeds 3 minutes without reaching the negative pressure value, the vacuum light flashes; please check if the lid is properly closed. The vacuum light turns off when the vacuum state is achieved.

Please enable Bluetooth on your phone when connecting to the internet.

APP SMART CONTROL

Scan and download the app: Scan the QR code or download "Uhome+" from the App Store or Android market. Go to the app's "Home" page, click "+" to add the corresponding device, and follow the prompts to bind the device.



Set feeding schedules in the app: The feeder will dispense food automatically according to the set schedule every day. Owners can view feeding logs to keep track of feeding times and the pet's eating status.

05

5. PRODUCT PARAMETERS

Product Name	Smart Vacuum Feeder	
Product Material	Ceramic, ABS, Silicone	
Product Dimensions	365*205*370mm	Container Capacity
Product Color	White	4.5L
Depressurization Time	≥10 seconds	Rated Power
		6W

6. PRECAUTIONS

If the device fails to complete vacuuming:

Abnormal Performance	Status Prompt	Cause Investigation
Automatic vacuuming starts after closing the lid.	No suction sound	Check if the power source is connected.
Vacuuming stops before reaching the preset state after a long time.	White light on the vacuum indicator flashes.	Check if the sealing ring is deformed or aged and needs replacement. Check if there is any food residue on the sealing ring or at the contact point between the pump and the container affecting the seal. Ensure that the lid is properly closed.

When not using the feeder, please turn it off and remove the power:
1. Use this product indoors.
2. Do not expose this product to direct sunlight for extended periods.
3. Do not use an adapter with a voltage higher than the input voltage.
4. The main unit cannot be washed with water; clean it with a paper towel.

06

喵享家喂食器说明书
4折页成品规格：82X99mm

This device complies with part 15 of the FCC Rules. Operation is subject to the following two conditions: (1) This device may not cause harmful interference, and (2) this device must accept any interference received, including interference that may cause undesired operation.

Any Changes or modifications not expressly approved by the party responsible for compliance could void the user's authority to operate the equipment.

Note: This equipment has been tested and found to comply with the limits for a Class B digital device, pursuant to part 15 of the FCC Rules. These limits are designed to provide reasonable protection against harmful interference in a residential installation. This equipment generates uses and can radiate radio frequency energy and, if not installed and used in accordance with the instructions, may cause harmful interference to radio communications. However, there is no guarantee that interference will not occur in a particular installation. If this equipment does cause harmful interference to radio or television reception, which can be determined by turning the equipment off and on, the user is encouraged to try to correct the interference by one or more of the following measures:

- Reorient or relocate the receiving antenna.
- Increase the separation between the equipment and receiver.
- Connect the equipment into an outlet on a circuit different from that to which the receiver is connected.
- Consult the dealer or an experienced radio/TV technician for help.
- This equipment complies with FCC radiation exposure limits set forth for an uncontrolled environment. This equipment should be installed and operated with minimum distance 20cm between the radiator & your body.