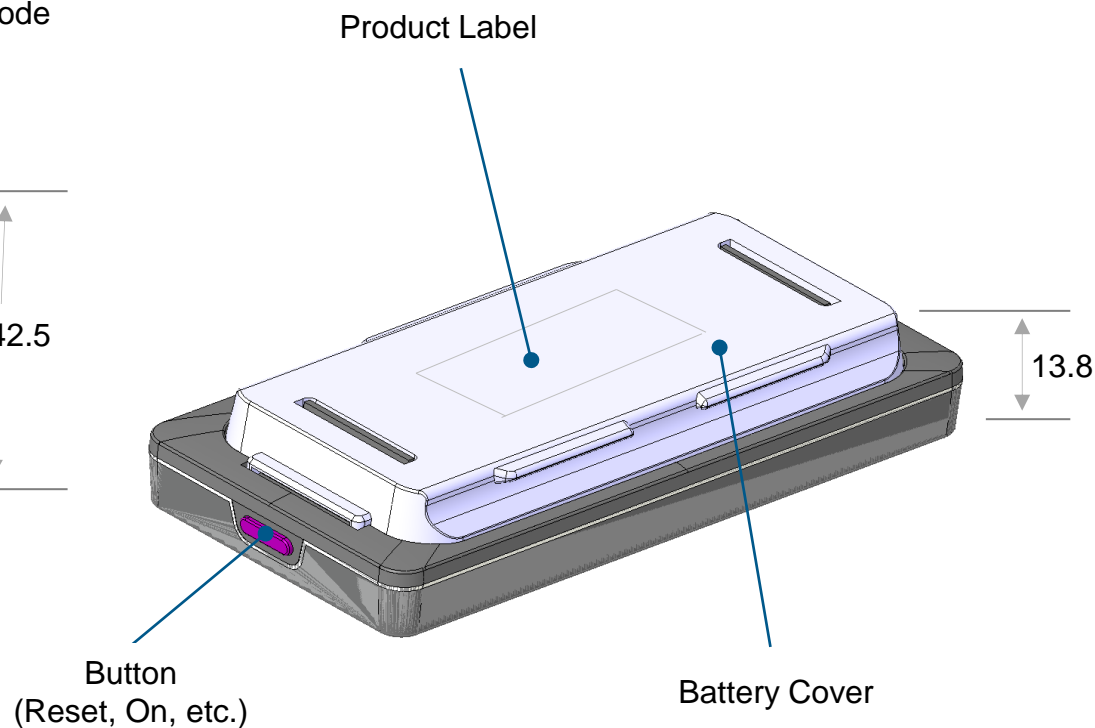
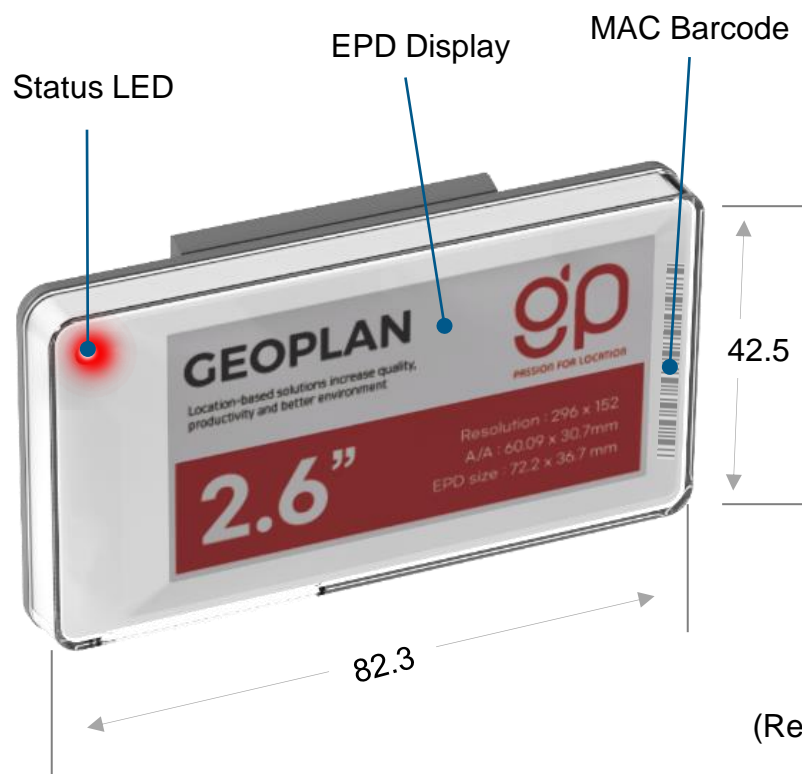


Electronic Shelf Label

[User Manual]

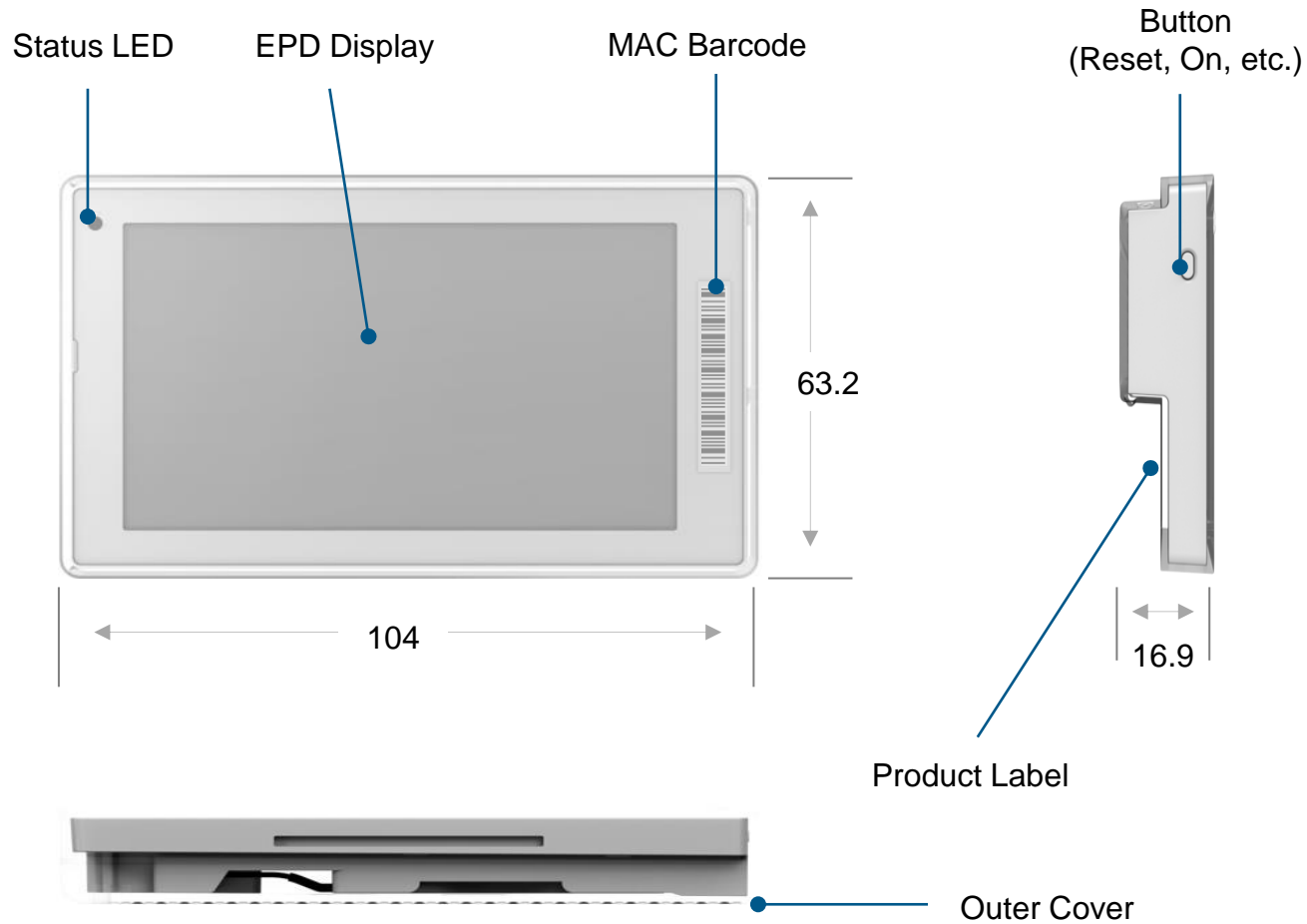
1. Appearance Specifications

(unit : mm)



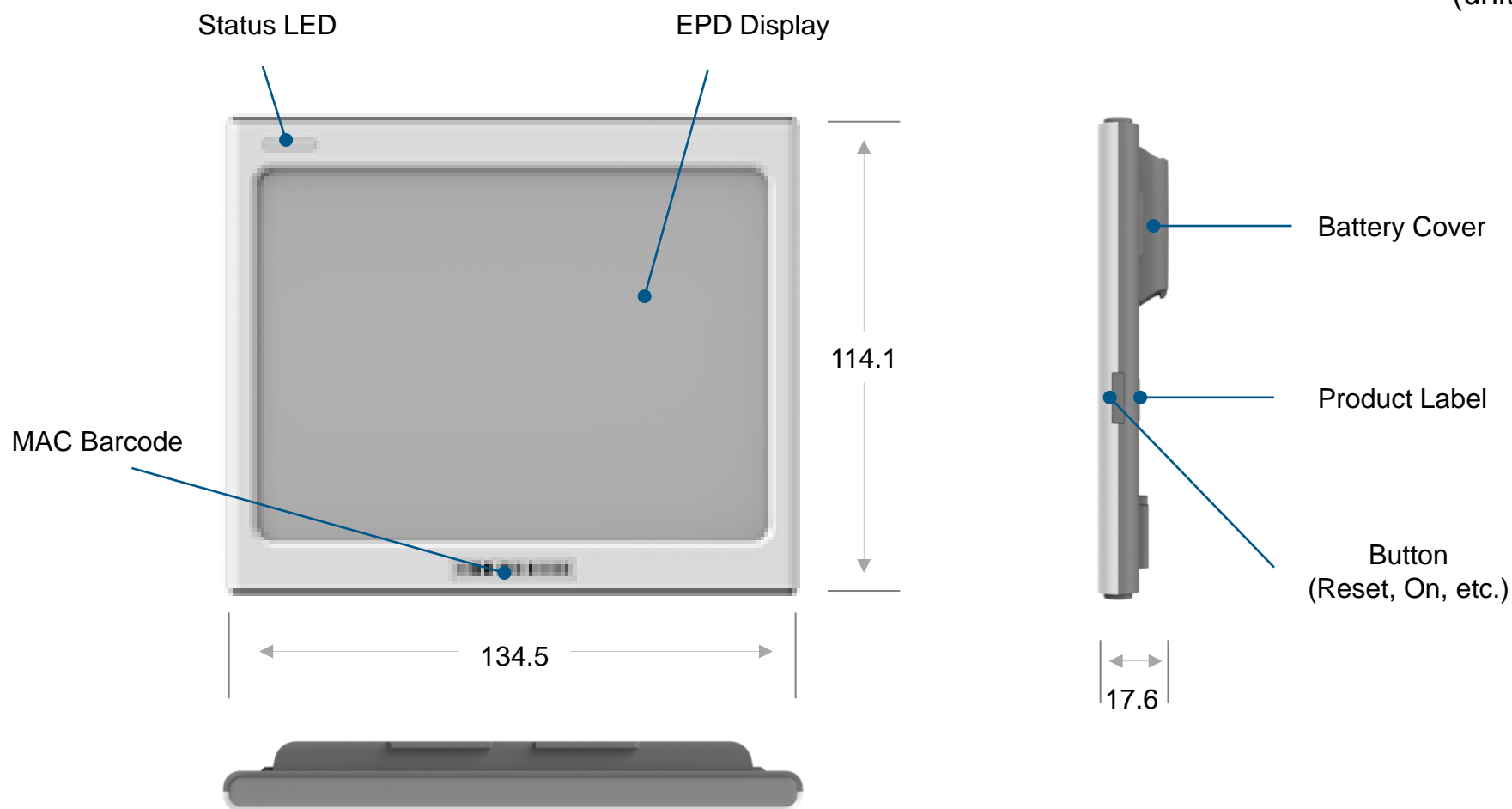
1. Appearance Specifications

(unit : mm)



1. Appearance Specifications

(unit : mm)

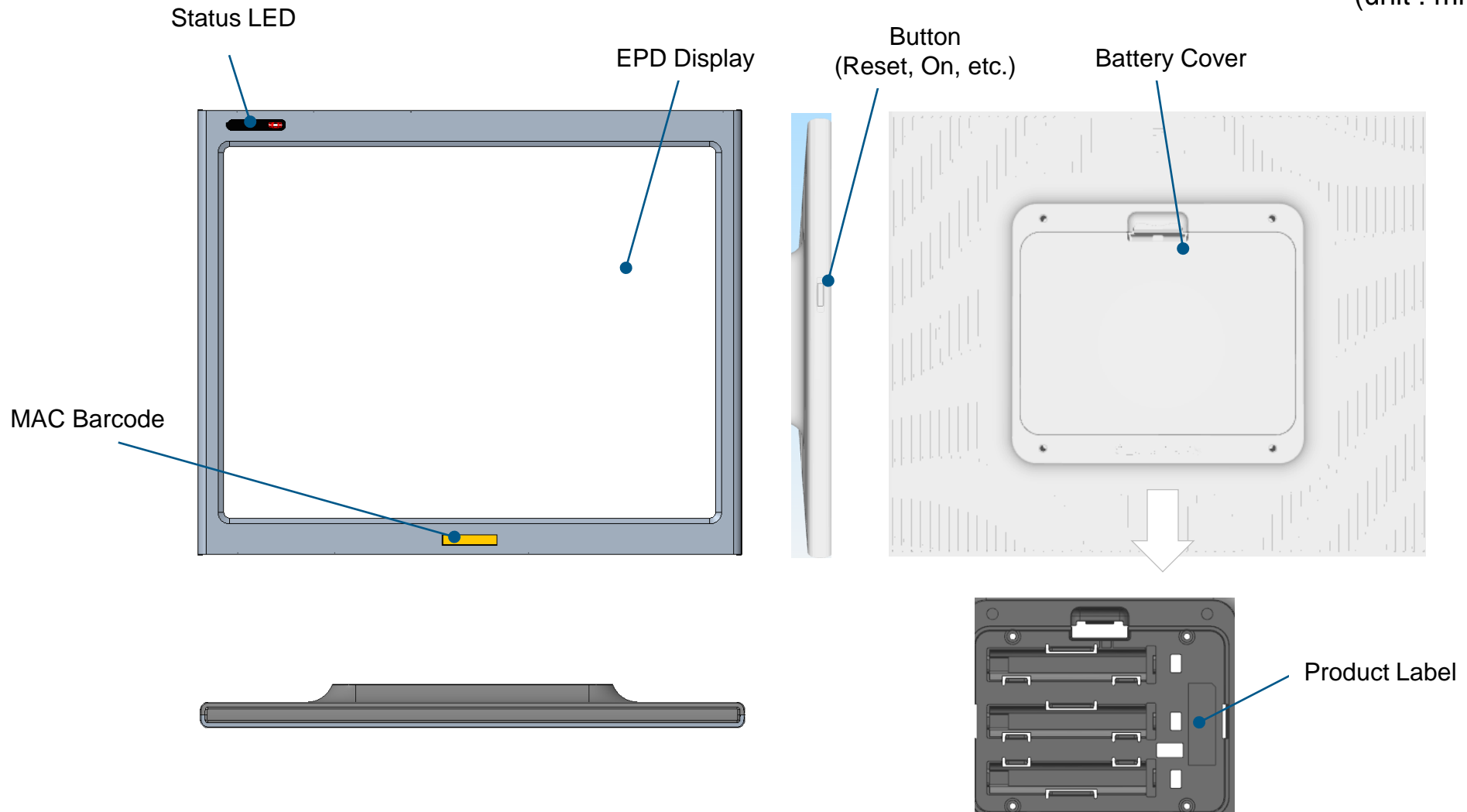


1. Appearance Specifications


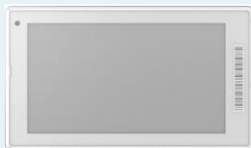


Confidential

12.5" ESL

(unit : mm)



2. ESL Product Specification

Model	TE-27R	TE-37R	TE-58R	TE-C5R
Image				
Size / Weight	82.3(H)x42.5(V)x13.8(D)mm	104(H)x63.2(V)x16.9(D)mm	134.5(H)x114.1(V)x17.6(D)mm	280.0(H)x232.0(V)x23.0(D)mm
Display	152(H)×296(V) / DPI:125	240(H)×416(V) / DPI:130	648(H)×480(V) / DPI:138	1304(H)×984(V) / DPI:131
Interface	802.15.4 Zigbee NFC (Forum Type3)	802.15.4 Zigbee NFC (Forum Type3)	802.15.4 Zigbee NFC (Forum Type3)	802.15.4 Zigbee UWB Ch.5 / Ch.9 3-Axis Accelerometer
Battery	Nominal 3.0V CR2450 x 2EA	Nominal 3.0V (CR2477 x 2 Pack) x 1EA	Nominal 3.0V (CR2477 x 3 Pack) x 1EA	Nominal 3.0V (LR8D425 x 4 Pack) x 3EA

FCC Information

This device complies with part 15 of the FCC Results. Operation is subject to the following two conditions :

- (1) This Device may not cause harmful interface, and
- (2) This device must accept any interference received, including interference that may cause undesired operation.

Note: This equipment has been tested and found to comply with the limits for CLASS B digital device, pursuant to Part 15 of FCC Rules. These limits are designed to provide reasonable protection against harmful interference when the equipment is operated in a commercial environment. This equipment generates, uses and can radiate radio frequency energy and, if not installed and used in accordance with the instructions, may cause harmful interference to radio communications. However, there is no guarantee that interference will not occur in a particular installation. If this equipment does cause harmful interference to radio or television reception, which can be determined by turning the equipment off and on, the user is encouraged to try correct the interference by one or more of the following measures:

- 1.1. Reorient or relocate the receiving antenna.
- 1.2. Increase the separation between the equipment and receiver.
- 1.3. Connect the equipment into an outlet on a circuit different from that to which receiver is connected.
- 1.4. Consult the dealer or experienced radio/TV technician for help.

WARNING

Changes or modifications not expressly approved by the manufacturer could void the user's authority to operate the equipment.

IMPORTANT NOTE:

FCC RF Radiation Exposure Statement:

This equipment complies with FCC RF radiation exposure limits set forth for an uncontrolled environment. This equipment should be installed and operated with a minimum distance of 20 centimeters between the radiator and your body. This transmitter must not be co-located or operating in conjunction with any other antenna or transmitter.