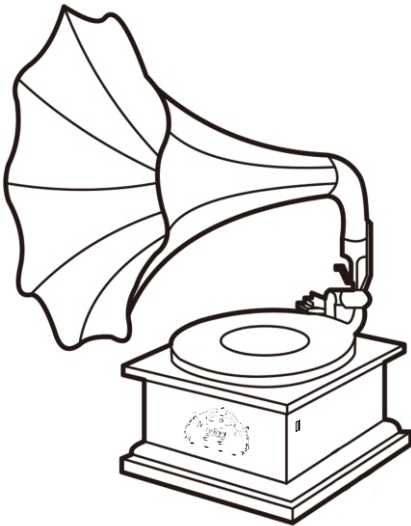


INSTRUCTION MANUAL

Antique Gramophone



Stereo/Phono/Bluetooth/Radio/AUX /USB playback

Kindly reminder: the picture is only for reference, please prevail in kind.

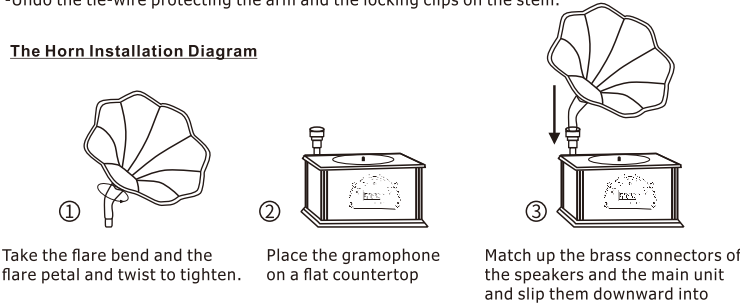
1. Product Overview

This machine is a beautifully designed appearance, suitable for home decoration, office, hotel, restaurant and other places, you can enjoy the relaxation brought by music and vision, provide your computer, digital music player, mobile phone and other audio-visual products with super value and perfect sound quality.

Unpacking and Installation

- Take the gramophone out of the box carefully and remove all packing materials;
- Place the phonograph on a level surface, out of direct sunlight and away from heat, dust, vibration and humidity;
- The phonograph has been locked with screws for safe transport, use a screwdriver to loosen the screws sufficiently in a clockwise direction;
- Undo the tie-wire protecting the arm and the locking clips on the stem.

The Horn Installation Diagram



2. Function Features

[Vinyl disk playback] This machine can play traditional vinyl disk music, restore clear original music content.

[Bluetooth function]With high-quality Bluetooth chip, super reception, restore the enjoyment of high-definition sound quality.

[MP3 playback]Directly play MP3 files in U disk / TF card.

(Support playback of music formats: MP3, WMA, WAV, APE, FLAC)

[FM Radio]High sensitivity receiver, receive radio signal playback, FM has stereo playback effect.

[AUX connection] External wire input function, more flexible connection to listen to music.

3. Key Function Description

[MODE] short turn the function knob, clockwise rotation in FM radio, Vinyl record mode, Bluetooth,USB, TF card and AUX mode cycle conversion.

[PREV] Short press ⏮ to return to the previous song(only works for Bluetooth, USB, TF card)

[NEXT] short press ⏭ to play the next song, (only works for Bluetooth, USB, TF card)

[PLAY/PAUSE] short press ⏯ to play and pause, (display characters flash or have the corresponding display)

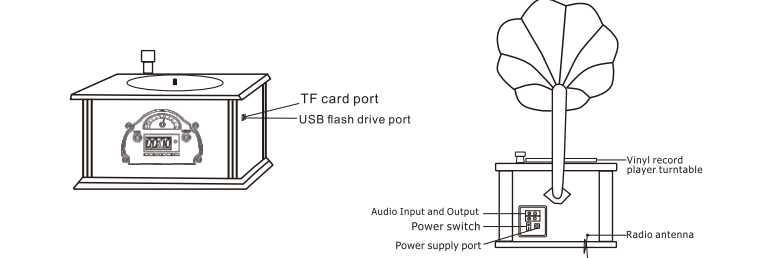
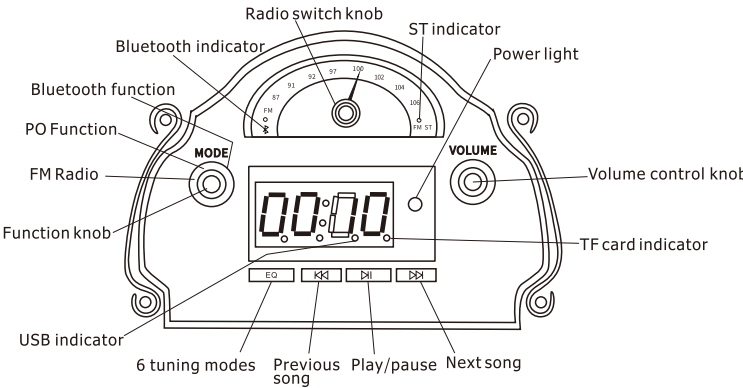
[EQ] This machine has six full section tone adjustable. EQ0 (Normal) EQ1 (Rock)

EQ2 (POP) EQ3 (Classic) EQ4 (Jazz) EQ5 (Country)

[VOLUME] Volume adjustment, clockwise increase volume, counterclockwise decrease volume.

[TABLE RULER] This machine has only FM function, no AM function, AM table ruler is for decoration. When the FM when adjusting the knob on the table ruler you can choose the frequency of the radio station you want to listen to, receive a clear station, the radio will light up the right side of the table ruler of the FM ST light, which is received in stereo signals, the sound quality is better.

Panel operation diagram

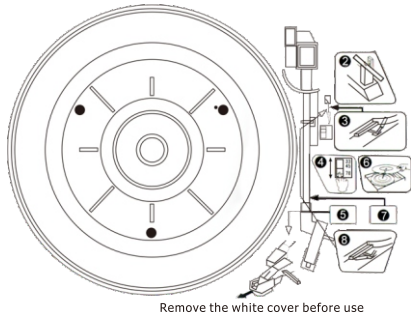


4. Vinyl Record Playback

- It can play traditional vinyl record music,turntable supports with 33/45/78 RPM vinyl records. compatible with 7"/10"/12" size s vinyl records.
- Turn on the power, turn the function knob to PO position, adjust the volume knob to the appropriate volume position, operate according to the following operation schematic, and then adjust the treble and bass knobs until you achieve the best listening sound.

Steps for turntable operation:

- 1). Connect the power supply;
- 2). Open the tone arm lock;
- 3). Upward the lift lever to raise the arm;
- 4). Select the playback speed of the record;
- 5). Remove the needle protector;
- 6). Place the vinyl record;
- 7). Move the arm to the edge of record;
- 8). Toggle the lift lever down;
- 9).After use, disconnect the power supply and put on the needle's white cover .



5. Bluetooth playback function

Rotate the function key to Bluetooth mode, there is a beep when Bluetooth is turned on, and the Bluetooth indicator is flashing.
Open the cell phone bluetooth, connect the bluetooth device name is: MUSIC-00A (the device name has a few of them, subject to real-time)
Connect successfully will beep, you can play the music on your cell phone. When the next boot connection will automatically connect to the cell phone Bluetooth.

6. AUX cable connection

- 1). The red and white connector on the back of the unit is the AUX audio cable connector, audio INPUT/OUTPUT, corresponding to the connection of the AUX audio cable.
- 2). AUX Input: Switch the function to AUX mode,connect the phonograph with a 3.5mm cable to adjust the volume and listen to songs
- 3). AUX OUTPUT: You can connect the audio signal of each function of this machine to other better amplifier via AUX cable to listen to music.

7. Power cord connection

This machine uses an external adapter DC power supply, the power voltage is: DC12V / 15V. Connect the power cord to the power socket on the back of the machine, turn on the power switch and the power indicator will light up, then the power supply is working normally.

8. Troubleshooting

- 1). Can not be turned on: check whether the power cord is connected, whether the power switch is turned on. Power indicator light is on is normal.
- 2). U disk can not play music: MP3 music file storage path can not be recognized, please store the music file in the U disk to directory.
- 3). The sound is not clear: adjust away from the main volume and tone; check whether there is damage to the record.
- 4). Play vinyl music speed is not right: check the turntable speed switch gear is reasonable.

9. Technical Specifications

Output power: 15W+15W Frequency effect: 60Hz-20KHz
Input power: AC100-240V DC 15V-3A

10. Packaging accessories

- 1). Main unit: one
- 2). Instruction manual: one
- 3). Power cord with adapter: one

11. Supplied Free Accessories

All complimentary accessories or consumable items are excluded from the warranty.

12. Accessories and consumables maintenance method

Vinyl Records Maintenance

- When using the phonograph vinyl turntable function, the playback time of 3 hours for the best.

- Vinyl phono and needle belongs to the wear and tear products, conventional 33 rpm new vinyl disk playback time of about 300 hours, please pay attention to the protection to increase the service life, please put the white phono protective cap on the needle if not use;When cleaning the needle, you can use a weak alkaline cleaning solution to gently rub the needle part.
-

Vinyl discs are now collector's items, and recommend to use a soft and dust-free cotton cloth dipped in a small amount of alkaline cleaning solution to clean the vinyl discs along the surface of the discs before and after use.Place your vinyl discs vertically in a dry, ventilated vinyl rack.

WARRANTY CARD

We provide you with one year free warranty service, such as the following cases are not within the scope of free warranty, please understand:

1. Without our written authorization permission, private dismantling of the box.
2. Man-made damage to the machine or not in accordance with the correct use of the damage caused by the method.
3. Man-made damage to the appearance.
4. Any irresistible external factors causing damage. such as: lightning, earthquake, etc!

Please fill in the following form and send it to the dealer or our authorized after-sales maintenance department.

User ID		Contact person	
Contact phone		Address	
Repair Date	Fault description	Status of processing	Maintainer
Distributors			
		Purchase Date:	

FCC WARNING

This device complies with part 15 of the FCC Rules. Operation is subject to the following two conditions: (1) this device may not cause harmful interference, and (2) this device must accept any interference received, including interference that may cause undesired operation.

Any changes or modifications not expressly approved by the party responsible for compliance could void the user's authority to operate the equipment.

NOTE: This equipment has been tested and found to comply with the limits for a Class B digital device, pursuant to Part 15 of the FCC Rules. These limits are designed to provide reasonable protection against harmful interference in a residential installation. This equipment generates, uses and can radiate radio frequency energy and, if not installed and used in accordance with the instructions, may cause harmful interference to radio communications.

However, there is no guarantee that interference will not occur in a particular installation. If this equipment does cause harmful interference to radio or television reception, which can be determined by turning the equipment off and on, the user is encouraged to try to correct the interference by one or more of the following measures:

- Reorient or relocate the receiving antenna.
- Increase the separation between the equipment and receiver.
- Connect the equipment into an outlet on a circuit different from that to which the receiver is connected.
- Consult the dealer or an experienced radio/TV technician for help.

To maintain compliance with FCC's RF Exposure guidelines, This equipment should be installed and operated with minimum 20cm distance between the radiator and your body: Use only the supplied antenna.