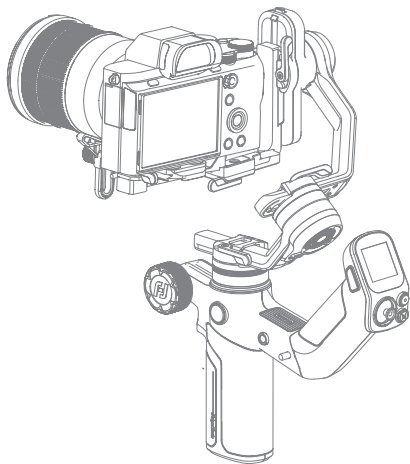


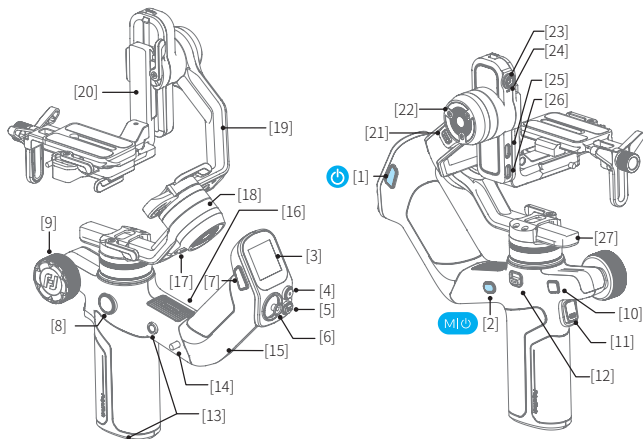
SCORP Mini 3 Pro

Instructions



1. Overview

* Not include camera/smartphone.



- [1] Handle power button
- [2] Main body power button
- [3] Touch screen
- [4] Shutter button
- [5] Mode button
- [6] Joystick
- [7] F1 button
- [8] Knob function switching button
- [9] Multifunction knob
- [10] Photo/video button
- [11] Trigger button
- [12] Pan lock
- [13] 1/4 inch thread hole
- [14] Handle lock
- [15] Detachable handle

- [16] Indicator
- [17] Roll axis
- [18] Roll axis
- [19] Cross arm
- [20] Slide arm
- [21] Tilt axis
- [22] Tilt lock
- [23] AI tracking camera
- [24] AI tracking indicator
- [25] Extension port
- [26] Camera control port/USB-C power output port ①
- [27] Versatile arm

① Supports charging for shooting devices compatible with the USB power supply protocol

User manual

Scan the QR code to get the latest user manual or download it from the official website.

<https://www.feiyu-tech.com/feiyu-scorp-mini-3-pro/>



Download the App

Scan the QR code to download the app, or search for "**Feiyu SCORP**", "**Feiyu ON**" in the App Store or Google Play.

* Feiyu SCORP: Requires iOS 11.0 or above, Android 6.0 or above.

Feiyu ON: Requires iOS 12.0 or above, Android 8.0 or above

Mount mirrorless camera, pocket camera or action camera on gimbal for shooting

Feiyu SCORP



iOS



Android

Mounting smartphone on gimbal for shooting

Feiyu ON



iOS

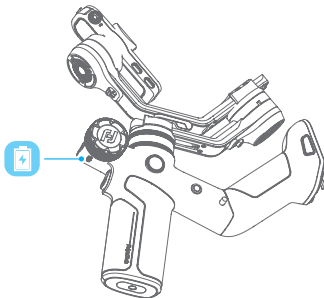


Android

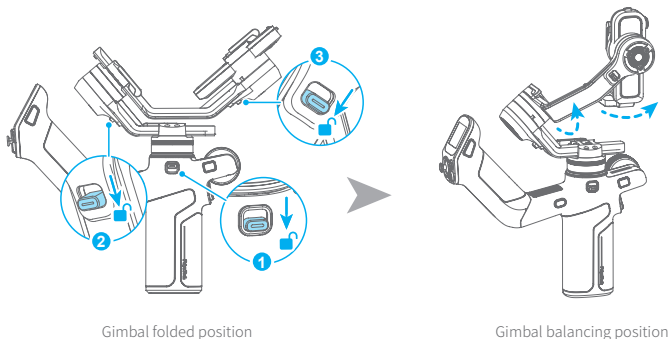
2. Getting started

2.1 Charging

Please fully charge the battery before power on the gimbal for the first time.
Charging with USB-C cable, supports quick charge.



2.2 Adjust the gimbal to gimbal balancing position



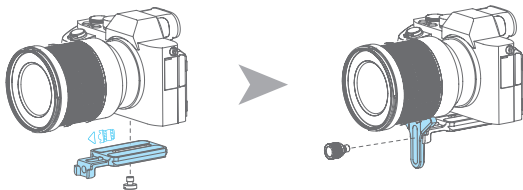
3. Mounting the shooting equipment

Before mounting the shooting equipment, make sure the camera is ready for shooting (Install the camera lens, and the lens cover should be removed, the memory card and battery needs to be inserted to the camera, and battery is fully charged) , complete all the steps which mentioned in chapter "2. Getting started" and the gimbal is adjusted to **gimbal balancing position**. Make sure the gimbal is powered off or in sleep mode before mounting the camera.

3.1 Mounting a Camera

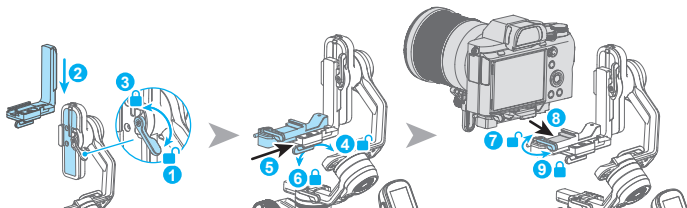
3.1.1 Attach the quick release plate

Attach the quick release plate to camera by tightening the screw.
If the camera doesn't have the 1/4-20 inch screw hole, please put the camera on mount adapter, which has 1/4-20 inch screw hole, and then follow the steps above to mount it.

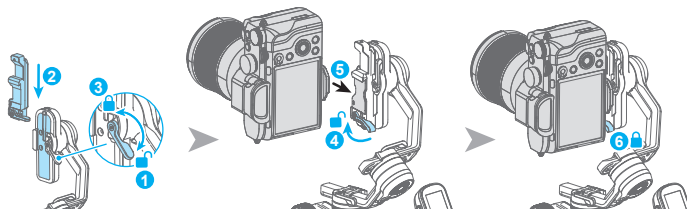


Users can mount smartphone into the optional smartphone holder, and follow the steps above to install it on the gimbal.

3.1.2 Horizontal mounting for camera

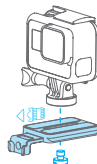


3.1.3 Vertical mounting for camera

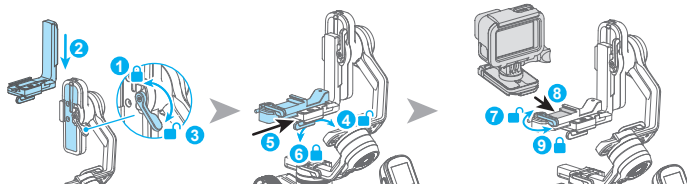


3.2 Mounting an action camera

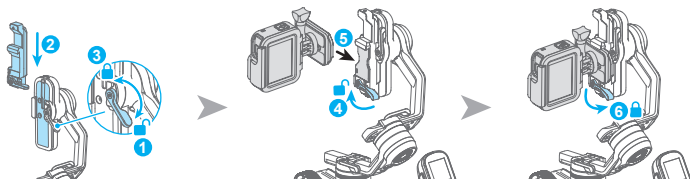
3.2.1 Attach the quick release plate



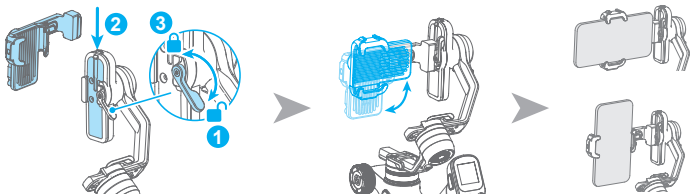
3.2.2 Horizontal mounting for action camera



3.2.3 Vertical mounting for action camera



3.3 Mounting a smartphone



4. Gimbal balancing

Please balance the gimbal before shooting. Take camera mounting as an example. Make sure the camera and lens are ready for shooting, and the gimbal is powered off or in sleep mode before balancing.

It is recommended to hold up the camera first, then move the slide arm, cross arm and vertical arm.

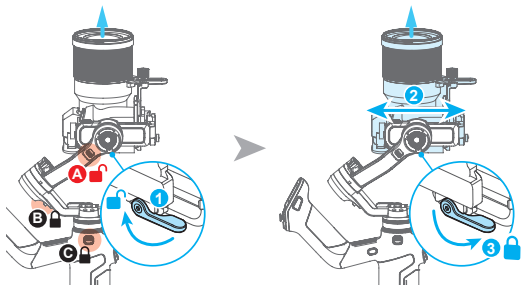


Tutorial Videos

4.1 Balancing the tilt axis

4.1.1 Balancing the vertical tilt

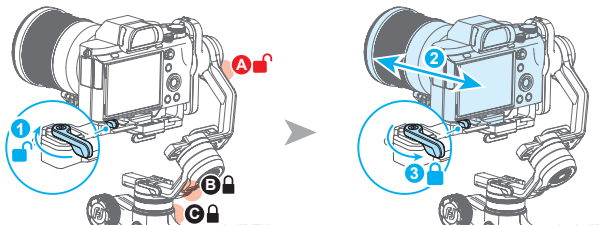
- (1) Unlock motor lock **A** and secure motor locks **B** and **C**.
- (2) Position the camera lens vertically upward.
- (3) Unlock ①, move ② in the opposite direction of the lens tilt until the lens remains vertically upward.
- (4) Lock ①, supporting the camera upward to ensure proper fixation.



4.1.2 Adjust depth for the tilt axis

- (1) Place the camera lens pointing horizontally forward.
- (2) Unlock ①, move ② in the opposite direction of the lens tilt until the lens remains horizontally forward.
- (3) Lock ①, supporting the camera to ensure proper fixation.

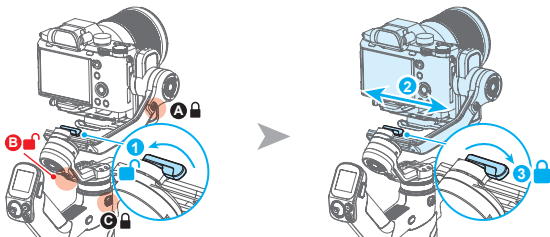
If the camera remains stationary at a tilt angle of about $\pm 45^\circ$, it indicates that the tilt axis has been balanced.



4.2 Balancing the roll axis

- (1) Unlock motor lock B and secure motor locks A and C. Observe the camera's tilt direction.
- (2) Unlock ①, move ② in the opposite direction of the lens tilt until the cross arm remains level, indicating it is balanced.
- (3) Lock ①.

If the camera remains stationary at a horizontal angle, it indicates that the roll axis has been balanced.



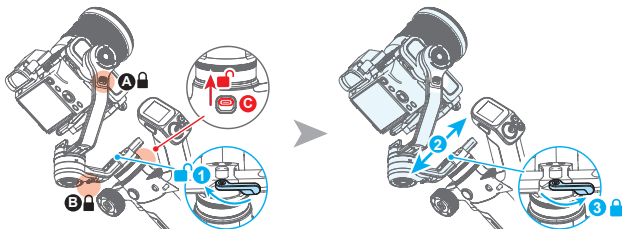
4.3 Balancing the pan axis

(1) Unlock motor lock **C** and secure motor locks **A** and **B**. Hold the handle and tilt the device to observe the camera's tilt direction.

(2) Unlock ① and move ② in the opposite direction of the lens tilt until the vertical arm stays still, indicating it is properly balanced.

(3) Lock ①.

If the camera remains stationary at a horizontal angle, it indicates that the yaw axis has been balanced.



5. Operation

5.1 Power ON/OFF

Before power on the gimbal, make sure you have balanced gimbal, and unlocked all the three axes. If you haven't unlocked all the 3 axes, gimbal will enter sleep mode to protect itself. Please single tap power button to wake up gimbal after unlocked all the 3 axes.

! Please set motor power first after powering on gimbal for the first time or after changing a new camera/lens.

Long press the power button and release it when you hear the beep sound to power on/off.

When assembled, the device can be powered on using either A or B. In separate mode, A and B