

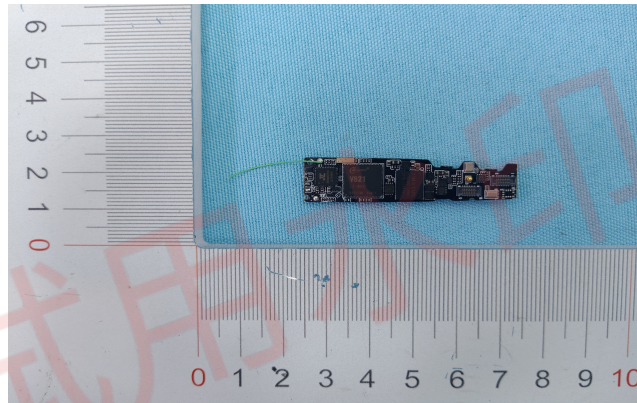
Specification of Bluetooth antenna

一： Introduction of antenna

。

The Bluetooth module antenna is directly welded on the PCB board.

二： Antenna Shape



三：

The Bluetooth antenna operates at 2402-2480MHz and resonates in this band. The following table shows the main parameters of the antenna.

Frequency(MHz)	2400~2500MHz
VSWR	≤ 1.92
Impedance	50 Ohm Nominal
Return Loss	-10 dB Max

Radiation	Omni-directional
Gain(Peak)	-1dBi
Polarization	Linear,Vertical
Admitted Power	2w
Connector	Tin

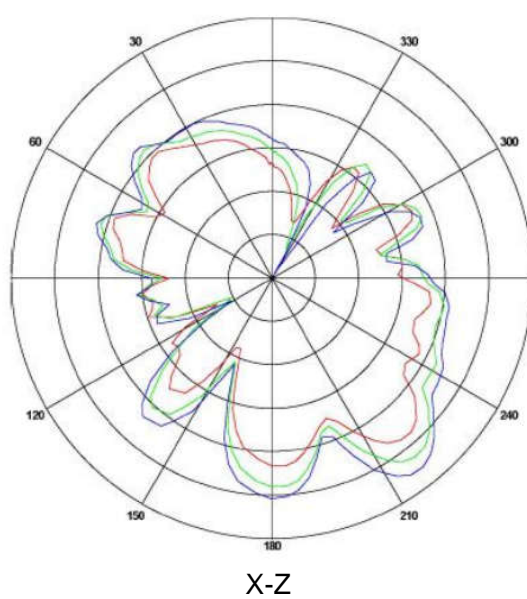
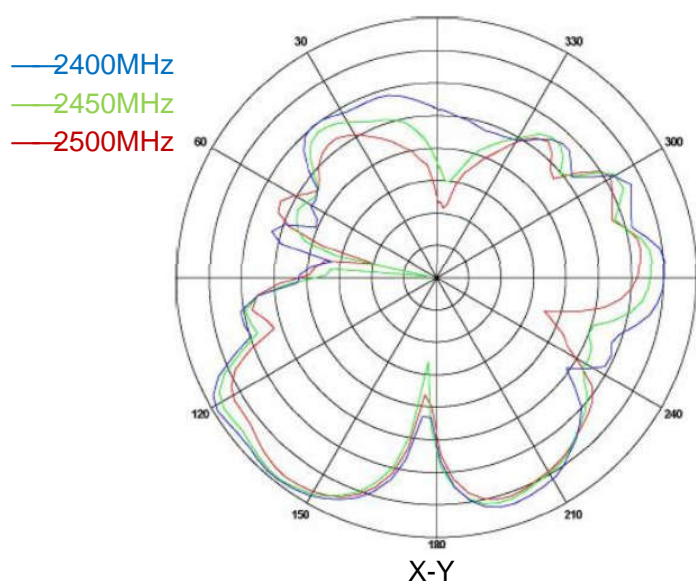
四：gain and efficiency

Frequency	Gain(dBi)	Efficiency(%)
2400MHz	-1	35
2420MHz	-1.12	35
2440MHz	-1.22	35
2460MHz	-1.59	35
2480MHz	-1.69	35
2500MHz	-1.72	35

五：Manufacturer and model

Shenzhen dongxintong electronic technology co., ltd
Room 501, Building 6, Phase II, Dongjiu Innovation Science and Technology
Park, No. 73, Xiali South Road, Xiali Lang Community, Nanwan Sub-district,
Longgang District, Shenzhen City

BT ANT



-22~-1dBi, 3dB/Div

试用水印