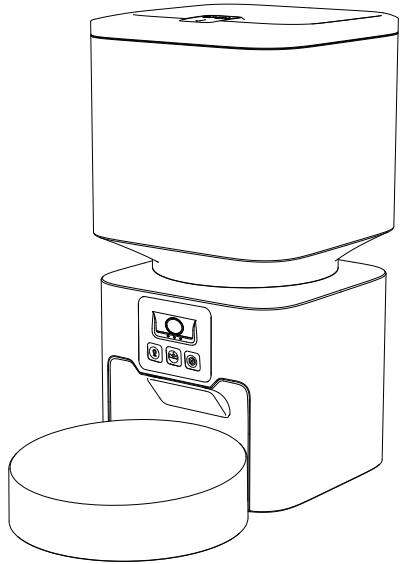


Smart Pet Feeder

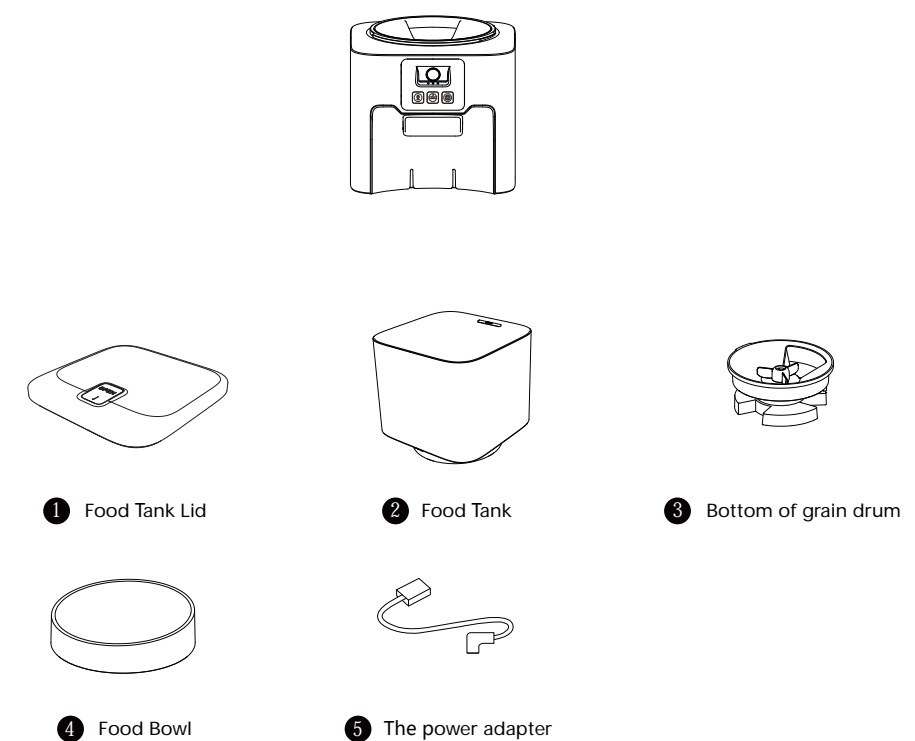
Smart Edition



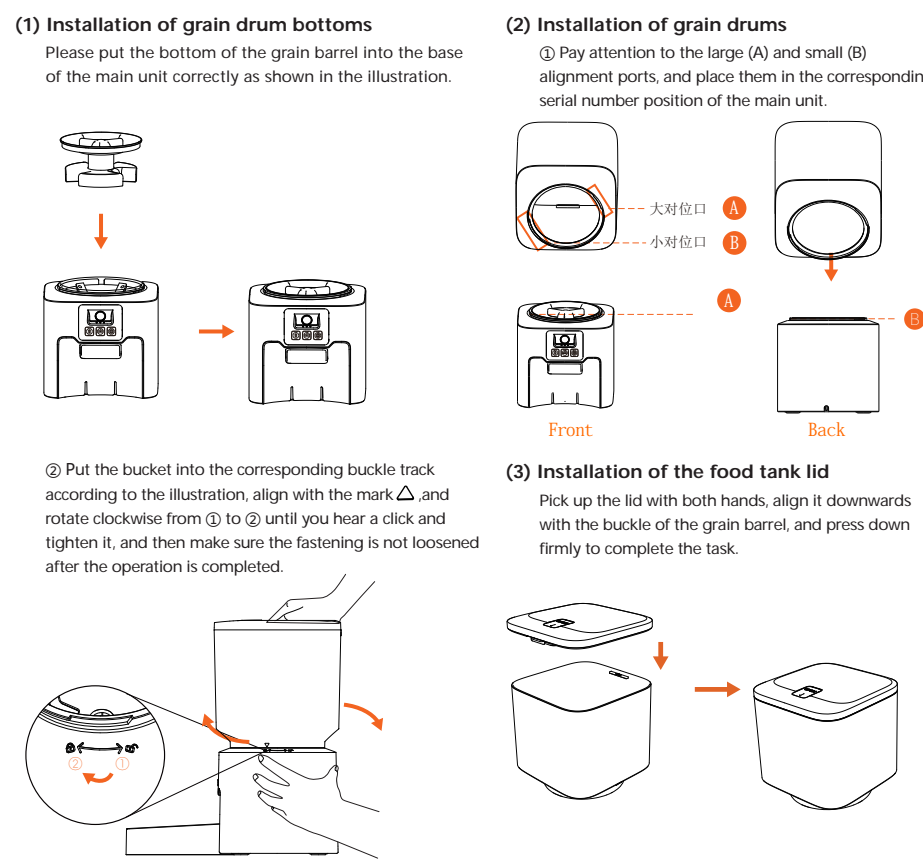
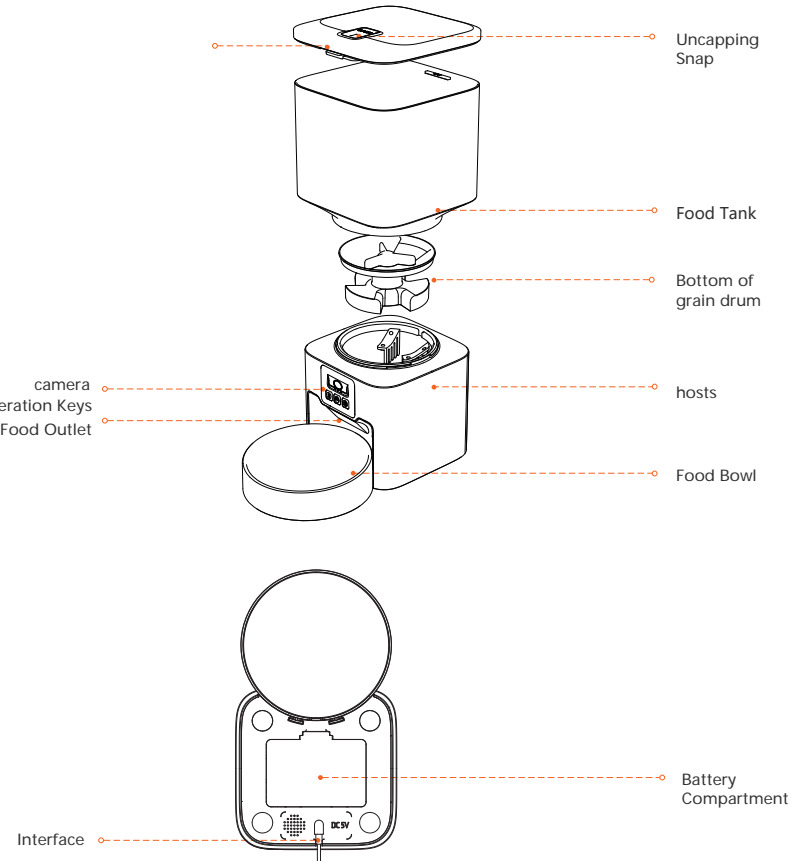
- Children need to be used in the company of adults.
- Do not use the feeder for pets who cannot reach the food tray or have physical disabilities.
- Do not immerse the foundation in water, which will damage electronic components such as the control panel.
- Do not place any foreign objects in the pet feeder.
- Do not place wet food or spoiled pet food in the feeder.
- Do not disassemble the equipment by yourself.
- Do not modify the pet feeder.
- If the equipment malfunctions or parts are damaged, do not repair the pet feeder by yourself, contact your seller immediately to solve the problem.
- Be sure to unplug the product when not in use or before cleaning it.
- If the equipment's power plug becomes wet, turn off the power at the outlet and do not attempt to unplug it.

- Please do not let your pet to chew or swallow any of the accessories. If you are worried about damage to the power cord, please buy a cord conduit (hard plastic protector) at a hardware store to protect the cord.
- Do not place the feeder in the sun or in a place where the ambient temperature does not match, the normal operating ambient temperature of the feeder is 0 °C ~ 40 °C.
- Do not use rechargeable batteries, please use an alkaline Size D battery for the power supply.
- Check the battery regularly, be sure to replace the battery if you are traveling or on business.
- Do not lift the feeder directly by the lid, grain bucket and food basin. You need to hold the base with both hands to lift it and transport it, and be careful to unplug the power plug at the same time.
- Please use dry food with a pet food size range of 3-13 mm. Avoid food jams or blockage of the food outlet due to oversized food.
- Please read and follow all important instructions listed on the pet feeder and packaging carefully.

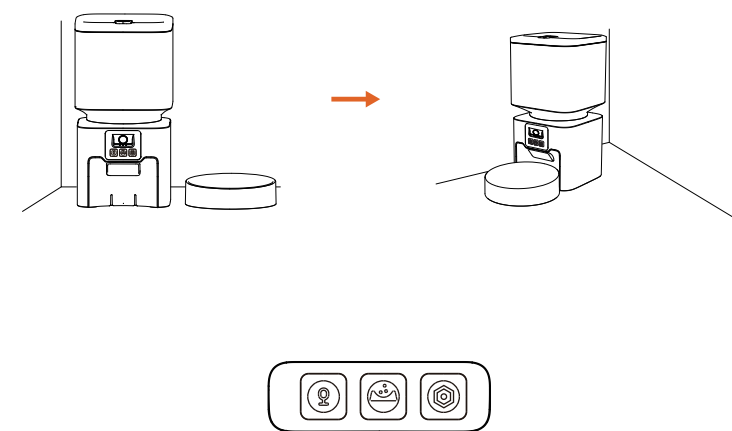
After opening the product package, please make sure the pet feeder is intact, please check the list to make sure the accessories are complete.



* In order to provide better products, we regularly make product improvements. When the product picture is slightly different from the real thing, please refer to the real thing.



(4) Place the feeder base on a level surface with the food bowl stuck to the base.



- Ⓜ **Recording button:** Long press for 1s until you hear "di" and start recording. The recording time does not exceed 10s. After you release your hand, you will hear "di" to indicate that it has been saved.
- Ⓜ **Feeding button:** Press the button to dispense one serving, hold it for 4 seconds to lock, and then press and hold it for 4 seconds again to unlock with two beeps.
- Ⓜ **Reset:** In the unlocked state, long press Ⓜ to clear all data. A "di" sound will be heard in 6 seconds, and the device will be restored to factory settings, network configuration information, feeding plan, feeding records, etc.

Indicator light color	Indicator light signal	Equipment status
White	Flashing	In the process of network distribution
	Ever-bright	Network connection successful
Red	Fast flashing	Lock key/Unlock (flashes 2 times) Power on (flashes for about 20 seconds, then turns off)
	Slow flashing	Low battery/Motor stalled
	Ever-bright	Battery powered

Note:
When the equipment fails (low battery, motor blockage, insufficient grain residue, clogged grain outlet)
App pushes exception alerts

- Please clean the feeder regularly to keep your pet's health.
- When it starts to get dirty and a lot of loose food in the food trough, you can remove the food cover to clean it.
- Please use a soft damp cloth to clean the control panel and host base.
- Do not put the product in the dishwasher, otherwise it will be permanently damaged!

Specification

Food Tank Capacity: 4.5L
Power supply: DC 5V/1A power adapter; 3pcs alkaline batteries
Power adapter: AC100-240V input, DC5V output
G.W: 1.68kg
Size: 180*179*327mm

CAUTION: Changes or modifications to this unit not expressly approved by the party responsible for compliance could void the user's authority to operate the equipment.

CAUTION: This device complies with part 15 of the FCC Rules. Operation is subject to the following two conditions: (1) This device may not cause harmful interference, and (2) this device must accept any interference received, including interference that may cause undesired operation.

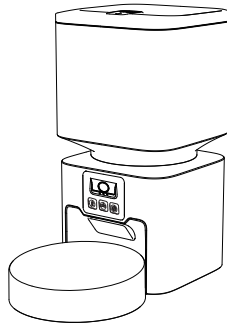
FCC Statement: This equipment has been tested and found to comply with the limits for a Class B digital device, pursuant to part 15 of the FCC Rules. These limits are designed to provide reasonable protection against harmful interference in a residential installation. This equipment generates, uses and can radiate radio frequency energy and, if not installed and used in accordance with the instructions, may cause harmful interference to radio communications. However, there is no guarantee that interference will not occur in a particular installation. If this equipment does cause harmful interference to radio or television reception, which can be determined by turning the equipment off and on, the user is encouraged to try to correct the interference by one or more of the following measures:
—Reorient or relocate the receiving antenna.
—Increase the separation between the equipment and receiver.
—Connect the equipment into an outlet on a circuit different from that to which the receiver is connected.
—Consult the dealer or an experienced radio/TV technician for help.

RF exposure compliance statement:
This device has been evaluated to meet the general RF exposure requirement

This equipment should be installed and operated with minimum distance 20cm between the radiator and your body.

01 | Installation

- Complete assembly in the order of installation.



02 | Connect the power supply

- Plug the 5V/1A power adapter into an outlet and connect the unit.
- After plugging in, the boat-shaped switch at the bottom of the device needs to be turned on synchronously, and the LED light will light up, indicating that the feeder is powered on.
- Open the battery compartment at the bottom of the feeder and install 3 pcs Size D Battery (not necessary) to prevent power failure.

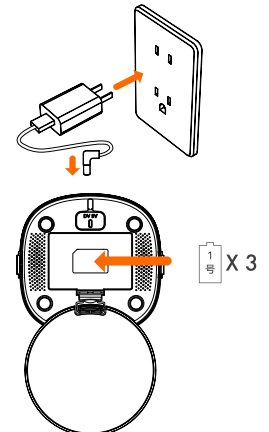
Note:
1) Does not include battery.
2) Before turning on the power, make sure that all parts are clean and completely dry.

03 | Put pet food in the food tank

- Press and hold the lid opening button above to open the lid upwards.
- Pour in dry pet food.
- Close the lid, align with the buckle and press down firmly.

Note:

- Do not place canned, wet or wet pet food.
- The recommended pet food size range is 3-13 mm.



04 | Recording

- Press and hold the recording button for 1 second until you hear a "di" and start recording, and release the "di" to end the recording. The recording time can be up to 10 seconds, and each repetition of this process can change your recording.

Note:
1) It will only play when pressed when there is a recording.
2) When it is time to feed, take out the food and play the recording 1 time.



06 | Feed

- Manual feeding: 1 portion of food is dispensed with a short press.

Attention:

- Please unlock the device before feeding.
- If feeding schedule will not be affected.



05 | Lock/Unlock

- Press the key for 4 seconds without operation, the key will be locked with a "di" sound, press and hold Ⓜ again for 4 seconds, the key will be unlocked with two "di".

Attention:
1) Any button cannot be operated in the locked state, and it must be unlocked to be used normally.
2) The locked state does not affect the operation of the App.

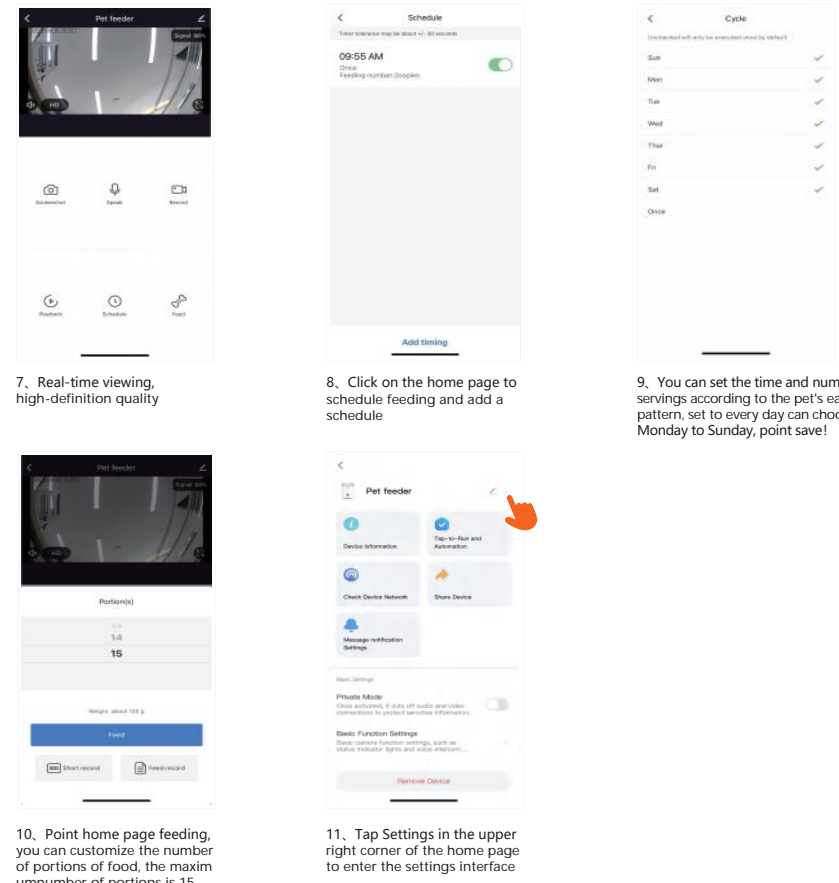
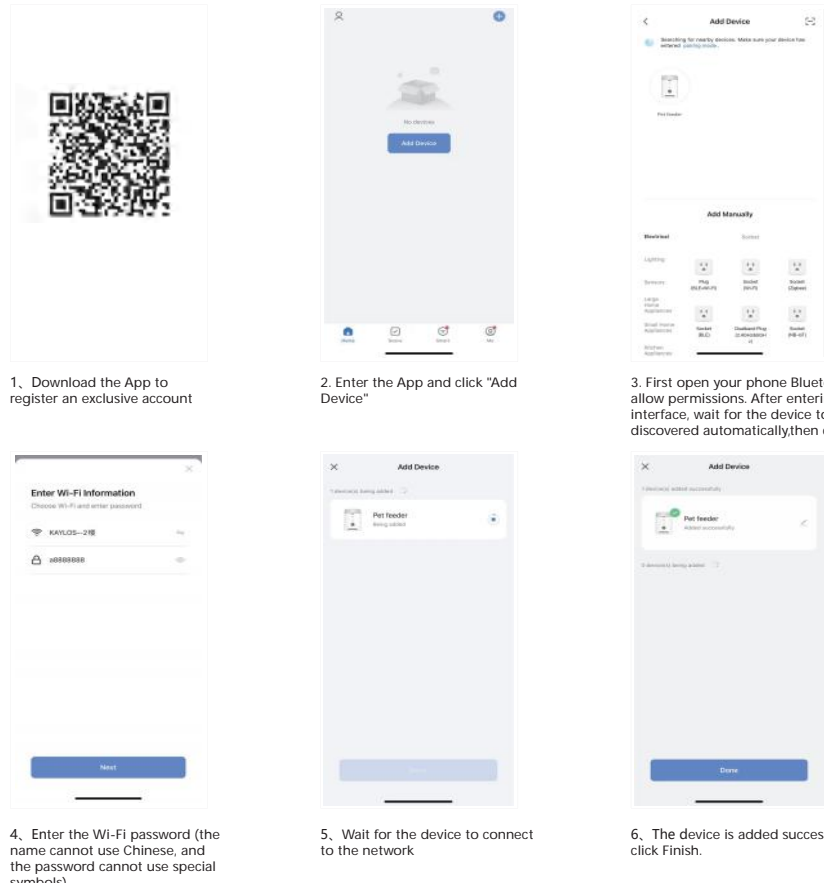


07 | Reset

- In the unlocked state, press and hold for 6 seconds to make a "di" sound, and the device will restore the factory settings, network information, feeding schedule, feeding records, etc.
- The network can be reconfigured after reset.



Smart Life APP Specific Operations



Q: App can't be displayed properly

A: Please make sure that the environment where the device is located has a good network.

Q: The App can't connect to the feeder

- Please check if the Wi-Fi name and password are in Chinese or longer than 12 digits
- Please restart your phone, close the non-system software that starts automatically on boot, turn on the Bluetooth and positioning of your phone, and try to reconnect again.

Q: The feeder does not dispense food properly or does not dispense food at all

A: Please check if there is too much grain in the food bowl or if it causes blockage of the grain passage. If so, please clean the grain passage and the grain outlet in time: when using battery power, please check if the battery is dead and if the battery is leaking.

Q: Feeder display offline

A: Please check whether the distance of the feeder from your home router is more than 10 meters (effective distance of 10 meters); try not to separate walls in the middle, according to the characteristics of Wi-Fi, the Wi-Fi signal across the wall will drop sharply, and the connection appears to be unstable, which will lead to the device offline.

Q: No response to power on

A: Please make sure the power is plugged in. If the check is correct and the device still does not power on normally, please contact your dealer or customer service in time.

Follow the steps to create a cleaning chart

- Remove the top cover and empty the grain drum of grain (make sure)
- Grasp the grain barrel by hand, hold the base and rotate it counterclockwise to remove the barrel
- Remove the bottom of the grain barrel
- Please empty the food tray and remove the food tray
- Rinse in water or with food-grade detergent and air dry
- The base of the main unit can be wiped with a damp towel, do not rinse with water