

How Your Solar Powered Barn Light Works

- The number of hours the light stays on depends on your geographical location, weather conditions and seasonal sunlight availability. Allow 24 hours for the fixture to fully charge. Avoid placing the fixture by other light sources, such as street lights or porch lights, this may cause the solar light to turn off automatically.

To Replace The Battery (Battery replacement is approximately 2-3 years)

- Remove battery cover located on the bottom of the solar light fixture.
- Replace the battery with a new 3.7V rechargeable battery of equal capacity. Ensure the polarity is correct.
- Allow the fixture to receive a minimum of 24 hours of sunlight to allow the

Troubleshooting If the light does not turn on at dusk after 24 hours of charging:

- Make sure the ON/OFF switch for the light is turned on.
- Check the battery to make sure it is making secure contact with the terminal.
- Be sure the solar panel is in a relatively sunny location.
- Make sure the solar panel is not affected by other light.

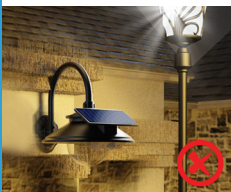
Maintenance

- Periodically clean light fixture with soft cloth and warm soapy water.

One Year Limited Warranty

- This product is warranted against defects in workmanship or materials at the time of purchase for one year (batteries excluded). For service, please contact our customer support at 1-469-708-8664 or siedinlar@outlook.com

Installation errors 1



Illuminated by other lights.

If the solar panel of the light is illuminated by other lights at night, the light will not work.

Installation errors 2



Under the shadow of obstructions or trees.

The solar light can't absorb direct sunlight due to the obstructions.

Correct installation



The solar light needs direct sunlight to charge properly.

SIEDINLAR

SOLAR BARN LIGHTS



SOLAR LIGHT
FIXTURE



GOOSE NECK



BOLTS



NUTS



WALL BASE



REMOTE
CONTROLS



SCREWS



ANCHORS

1. Press the ON/OFF button on the lamp body to activate for the first time (necessary for remote control use).

2. Effective within 33 feet; controls multiple lights; obstructions may reduce range.



• ON/OFF: Turn on / off the light

• Color Temperature: Cool White / Warm Light.

• Three Sensor Modes: Mode 1 / Mode 2 / Mode 3

• Remove the tab on the battery cover.



COOL WHITE
(6000K-6300K)

WARM WHITE
(3000K-3200K)



Support E-Mail: Siedinlar@outlook.com

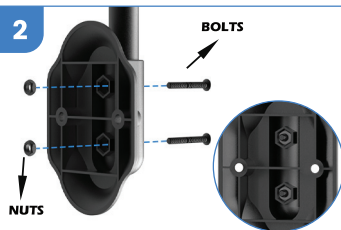
Installation Instructions

1



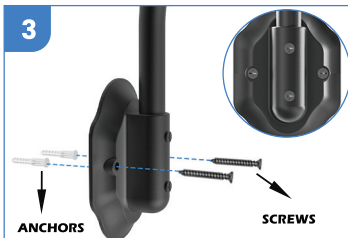
Align the gooseneck with the two holes in the mounting base and insert

2



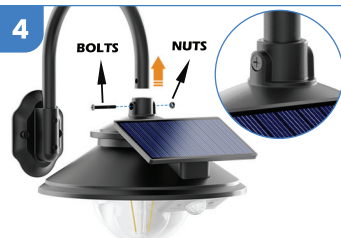
Secure the gooseneck using bolts and nuts.

3



Drill holes, insert two anchors, secure the base with two screws.

4



Align the holes on the gooseneck, insert the lamp body, and secure with bolts and nuts.

5



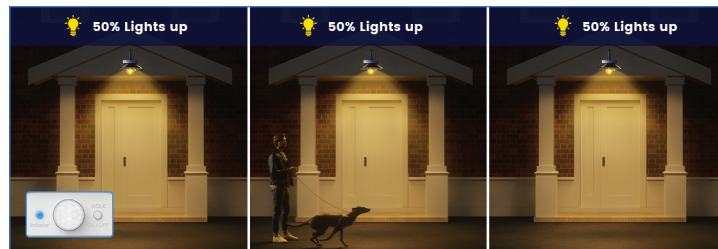
Press the **ON/OFF** button on the lamp body to activate for the first time. (necessary for remote control use)

Hold the **"ON/OFF"** button for **2-3 seconds** to select lighting mode, or press briefly for sensor mode.

Support E-Mail: Siedinlar@outlook.com

Mode 1: Constant ON at nighttime (the indicator light is blue).

It will always lighting at night without induction function.



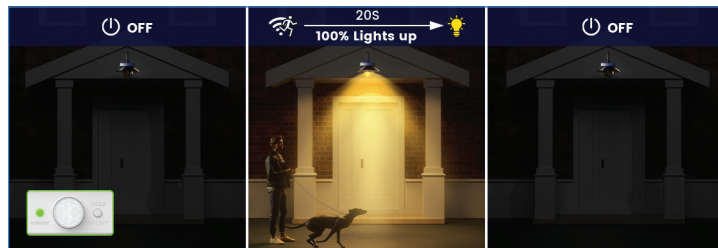
Mode 2: Dim to Bright with motion at night (the indicator light is red).

Stay on as dim light, gets brighter for 25s when the sensor detects a movement of a person or animal. Back on dim light after no further motion is detected.



Mode 3: Off to Bright with motion at night (the indicator light is green).

Motion sensor mode. Auto on for 25s when people or other living objects are detected within the sensing area, and auto off if no further movement is detected.





Remote Control Battery Warning:

- a) Remove and immediately recycle or dispose of used batteries according to local regulations and keep away from children.
Do NOT dispose of batteries in household trash or incinerate.
- b) Even used batteries may cause severe injury or death.
- c) Call a local poison control center for treatment information.
- d) The compatible battery type (e.g., LR44, CR2032).
- e) The nominal battery voltage
- f) Non-rechargeable batteries are not to be recharged.
- g) Do not force discharge, recharge, disassemble, heat above or incinerate. Doing so may result in injury due to venting, leakage or explosion resulting in chemical burns.



Replacing Remote Control Batteries Warning:

- a) Ensure the batteries are installed correctly according to polarity (+ and -).
- b) Do not mix old and new batteries, different brands or types of batteries, such as alkaline, carbon-zinc, or rechargeable batteries.
- c) Remove and immediately recycle or dispose of batteries from equipment not used for an extended period of time according to local regulations.
- d) Always completely secure the battery compartment. If the battery compartment does not close securely, stop using the product, remove the batteries, and keep them away from children.

⚠ WARNING

•**INGESTION HAZARD:** This product contains a button cell or coin battery.
•**DEATH** or serious injury can occur if ingested.
•A swallowed button cell or coin battery can cause **Internal Chemical Burns** in as little as **2 hours**.
•**KEEP** new and used batteries **OUT OF REACH** of **CHILDREN**
•**Seek immediate medical attention** if a battery is suspected to be swallowed or inserted inside any part of the body.



FCC Warning Statement

Changes or modifications not expressly approved by the party responsible for compliance could void the user's authority to operate the equipment.

This equipment has been tested and found to comply with the limits for a Class B digital device, pursuant to Part 15 of the FCC Rules.

These limits are designed to provide reasonable protection against harmful interference in a residential installation.

This equipment generates uses and can radiate radio frequency energy and, if not installed and used in accordance with the instructions, may cause harmful interference to radio communications.

However, there is no guarantee that interference will not occur in a particular installation.

If this equipment does cause harmful interference to radio or television reception, which can be determined by turning the equipment off and on, the user is encouraged to try to correct the interference by one or more of the following measures:

- - Reorient or relocate the receiving antenna.
 - - Increase the separation between the equipment and receiver.
 - - Connect the equipment into an outlet on a circuit different from that to which the receiver is connected.
 - - Consult the dealer or an experienced radio/TV technician for help.
- This device complies with part 15 of the FCC Rules.

Operation is subject to the following two conditions:

(1) This device may not cause harmful interference, and (2) this device must accept any interference received, including interference that may cause undesired operation.

The device has been evaluated to meet general RF exposure requirement.

The device can be used in portable exposure condition without restriction.