

# TEST REPORT

**Applicant:** Dopple Works, Inc.  
**Address:** 495 Embought Rd, Catskill, NY 12414 USA  
**Equipment Type:** LOOP  
**Model Name:** LOOP 01  
**Brand Name:** Dopple  
**FCC ID:** 2BN2V-LOOP01  
**Test Standard:** FCC 47 CFR Part 2.1093  
(refer to section 3.1)  
**Maximum SAR:** Front of face (1 g@10mm): 0.46 W/kg  
Limb (1 g@0mm): 0.07 W/kg  
**Sample Arrival Date:** Jan. 10, 2025  
**Test Date:** Feb. 01, 2025 - Feb. 04, 2025  
**Date of Issue:** Apr. 10, 2025

**ISSUED BY:**

Shenzhen BALUN Technology Co., Ltd.

**Tested by:** Xu Rui



**Checked by:** Zong Liyao



**Approved by:** Tolan Tu  
(Testing Director)



<b>Revision History</b>		
Version	Issue Date	Revisions Content
<u>Rev. 01</u>	<u>Apr. 10, 2025</u>	<u>Initial Issue</u>

## TABLE OF CONTENTS

1	GENERAL INFORMATION.....	4
1.1	Test Laboratory .....	4
1.2	Test Location .....	4
1.3	Test Environment Condition.....	4
2	PRODUCT INFORMATION .....	5
2.1	Applicant Information .....	5
2.2	Manufacturer Information.....	5
2.3	General Description for Equipment under Test (EUT).....	5
2.4	Ancillary Equipment.....	5
2.5	Technical Information .....	6
3	SUMMARY OF TEST RESULT .....	7
3.1	Test Standards .....	7
3.2	Device Category and SAR Limit .....	8
3.3	Test Result Summary .....	9
3.4	Test Uncertainty .....	10
4	MEASUREMENT SYSTEM .....	11
4.1	Specific Absorption Rate (SAR) Definition .....	11
4.2	DASY SAR System .....	12
5	SYSTEM VERIFICATION.....	19
5.1	Purpose of System Check .....	19
5.2	System Check Setup .....	19
6	TEST POSITION CONFIGURATIONS .....	20
6.1	Body-worn Position Conditions .....	20
7	MEASUREMENT PROCEDURE .....	21

7.1	Measurement Process Diagram .....	21
7.2	SAR Scan General Requirement .....	22
7.3	Measurement Procedure .....	23
7.4	Area & Zoom Scan Procedure .....	23
8	CONDUCTED RF OUPUT POWER .....	24
8.1	WIFI.....	24
8.2	Bluetooth .....	27
9	TEST EXCLUSION CONSIDERATION .....	28
10	TEST RESULT .....	29
10.1	Bluetooth .....	29
10.2	WIFI 2.4GHz.....	30
10.3	WIFI 5GHz.....	31
10.4	NFC SAR.....	32
11	SAR Measurement Variability .....	34
12	SIMULTANEOUS TRANSMISSION.....	35
13	TEST EQUIPMENTS LIST .....	36
ANNEX A	SIMULATING LIQUID VERIFICATION RESULT .....	37
ANNEX B	SYSTEM CHECK RESULT .....	38
ANNEX C	TEST DATA.....	43
ANNEX D	EUT EXTERNAL PHOTOS.....	53
ANNEX E	SAR TEST SETUP PHOTOS .....	53
ANNEX F	CALIBRATION REPORT .....	53
ANNEX G	TUNE-UP PROCEDURE.....	53

# 1 GENERAL INFORMATION

## 1.1 Test Laboratory

Name	Shenzhen BALUN Technology Co., Ltd.
Address	Block B, 1/F, Baisha Science and Technology Park, Shahe Xi Road, Nanshan District, Shenzhen, Guangdong Province, P. R. China
Phone Number	+86 755 6685 0100

## 1.2 Test Location

Name	Shenzhen BALUN Technology Co., Ltd.
Location	<input type="checkbox"/> Block B, 1/F, Baisha Science and Technology Park, Shahe Xi Road, Nanshan District, Shenzhen, Guangdong Province, P. R. China
	<input checked="" type="checkbox"/> 1/F, Building B, Ganghongji High-tech Intelligent Industrial Park, No. 1008, Songbai Road, Yangguang Community, Xili Sub-district, Nanshan District, Shenzhen, Guangdong Province, P. R. China
Accreditation Certificate	The laboratory is a testing organization accredited by FCC as a accredited testing laboratory. The designation number is CN1196.

## 1.3 Test Environment Condition

Ambient Temperature	18°C to 25°C
Ambient Relative Humidity	30% to 70%

## 2 PRODUCT INFORMATION

### 2.1 Applicant Information

Applicant	Dopple Works, Inc.
Address	495 Embought Rd, Catskill, NY 12414 USA

### 2.2 Manufacturer Information

Manufacturer	Dopple Works, Inc.
Address	495 Embought Rd, Catskill, NY 12414 USA

### 2.3 General Description for Equipment under Test (EUT)

EUT Name	LOOP
Model Name Under Test	LOOP 01
Series Model Name	N/A
Description of Model Name Differentiation	N/A
Hardware Version	LOOP 01
Software Version	dev_FlatBuild_v.userdebug.20250210.1519
Dimensions (Approx.)	N/A
Weight (Approx.)	N/A

### 2.4 Ancillary Equipment

Ancillary Equipment 1	Battery	
	Brand Name	N/A
	Model No.	INR26500-3.2Ah-3.7V-1S1P
	Serial No.	N/A
	Capacity	3200 mAh
	Rated Voltage	3.7 V
	Limit Charge Voltage	4.20 V

## 2.5 Technical Information

Network and Wireless connectivity	Bluetooth (BR+EDR+BLE 1M) WiFi 2.4G: 802.11b/g/n(HT20/40) WiFi 5G: 802.11a/n(HT20/40)/ac(VHT20/40/80) NFC
-----------------------------------	--

The requirement for the following technical information of the EUT was tested in this report:

Operating Mode	2.4G WIFI, 5G WIFI, Bluetooth	
Frequency Range	802.11b/g/n(HT20/HT40)	2412 MHz ~ 2462 MHz
	802.11a/n(HT20/HT40)/ac(VHT20/VHT40/VHT80)	5150 MHz ~ 5250 MHz
		5250 MHz ~ 5350 MHz
		5470 MHz ~ 5725 MHz
	Bluetooth	2402 MHz ~ 2480 MHz
Antenna Type	WIFI: IFA Antenna Bluetooth: IFA Antenna NFC: FPC Coil Antenna	
Hotspot Function	N/A	
Exposure Category	General Population/Uncontrolled exposure	
Product Type	Portable Device	
EUT Type	<input checked="" type="checkbox"/> Production unit	<input type="checkbox"/> Identical prototype

### 3 SUMMARY OF TEST RESULT

#### 3.1 Test Standards

No.	Identity	Document Title
1	47 CFR Part 2.1093	Radiofrequency radiation exposure evaluation: portable devices
2	ANSI C95.1-1992	IEEE Standard for Safety Levels with Respect to Human Exposure to Radio Frequency Electromagnetic Fields, 3 kHz to 300 GHz
3	IEEE Std.1528-2013	IEEE Recommended Practice for Determining the Peak Spatial-Average Specific Absorption Rate(SAR) in the Human Head from Wireless Communications Devices: Measurement Techniques
4	FCC KDB 447498 D04 v01	447498 D04 Interim General RF Exposure Guidance v01
5	FCC KDB 865664 D01 v01r04	SAR Measurement 100 MHz to 6 GHz
6	FCC KDB 865664 D02 v01r02	RF Exposure Reporting
7	FCC KDB 248227 D01 v02r02	SAR GUIDANCE FOR IEEE 802.11 (Wi-Fi) TRANSMITTERS

### 3.2 Device Category and SAR Limit

This device belongs to portable device category because its radiating structure is allowed to be used within 20 centimeters of the body of the user.

Limit for General Population/Uncontrolled exposure should be applied for this device, it is 1.6 W/kg as averaged over any 1 gram of tissue.

Table of Exposure Limits:

Body Position	SAR Value (W/Kg)	
	General Population/ Uncontrolled Exposure	Occupational/ Controlled Exposure
Whole-Body SAR (averaged over the entire body)	0.08	0.4
Partial-Body SAR (averaged over any 1 gram of tissue)	1.60	8.0
SAR for hands, wrists, feet and ankles (averaged over any 10 grams of tissue)	4.0	20.0

**NOTE:**

**General Population/Uncontrolled Exposure:** Locations where there is the exposure of individuals who have no knowledge or control of their exposure. General population/uncontrolled exposure limits are applicable to situations in which the general public may be exposed or in which persons who are exposed as a consequence of their employment may not be made fully aware of the potential for exposure or cannot exercise control over their exposure. Members of the general public would come under this category when exposure is not employment-related; for example, in the case of a wireless transmitter that exposes persons in its vicinity.

**Occupational/Controlled Exposure:** Locations where there is exposure that may be incurred by persons who are aware of the potential for exposure. In general, occupational/controlled exposure limits are applicable to situations in which persons are exposed as a consequence of their employment, who have been made fully aware of the potential for exposure and can exercise control over their exposure. This exposure category is also applicable when the exposure is of a transient nature due to incidental passage through a location where the exposure levels may be higher than the general population/uncontrolled limits, but the exposed person is fully aware of the potential for exposure and can exercise control over his or her exposure by leaving the area or by some other appropriate means.



### 3.3 Test Result Summary

#### 3.3.1 Highest Simultaneous Transmission SAR Values

Equipment Class	Maximum Report SAR (W/kg)		SPLSR
	Front of face (10mm)	Limb (0mm)	
	1g SAR	10g SAR	
DTS	0.34	0.05	/
NII	<b>0.46</b>	0.05	/
DSS	0.32	<b>0.07</b>	/
Limit (W/Kg)	1.6	4.0	<b>0.04</b>
Verdict	PASS		PASS

### 3.4 Test Uncertainty

According to KDB 865664 D01, when the highest measured 1 g SAR within a frequency band is  $< 1.5$  W/kg, the extensive SAR measurement uncertainty analysis is not required in SAR reports submitted for equipment approval.

The maximum 1 g SAR for the EUT in this report is 0.46 W/kg, which is lower than 1.5 W/kg, so the extensive SAR measurement uncertainty analysis is not required in this report.

## 4 MEASUREMENT SYSTEM

### 4.1 Specific Absorption Rate (SAR) Definition

SAR is related to the rate at which energy is absorbed per unit mass in an object exposed to a radio field. The SAR distribution in a biological body is complicated and is usually carried out by experimental techniques or numerical modeling. The standard recommends limits for two tiers of groups, occupational/controlled and general population/uncontrolled, based on a person's awareness and ability to exercise control over his or her exposure. In general, occupational/controlled exposure limits are higher than the limits for general population/uncontrolled.

The SAR definition is the time derivative (rate) of the incremental energy ( $dW$ ) absorbed by (dissipated in) an incremental mass ( $dm$ ) contained in a volume element ( $dv$ ) of a given density ( $\rho$ ). The equation description is as below:

$$SAR = \frac{d}{dt} \left( \frac{dW}{dm} \right) = \frac{d}{dt} \left( \frac{dW}{\rho dv} \right)$$

SAR is expressed in units of Watts per kilogram (W/kg) SAR measurement can be related to the electrical field in the tissue by

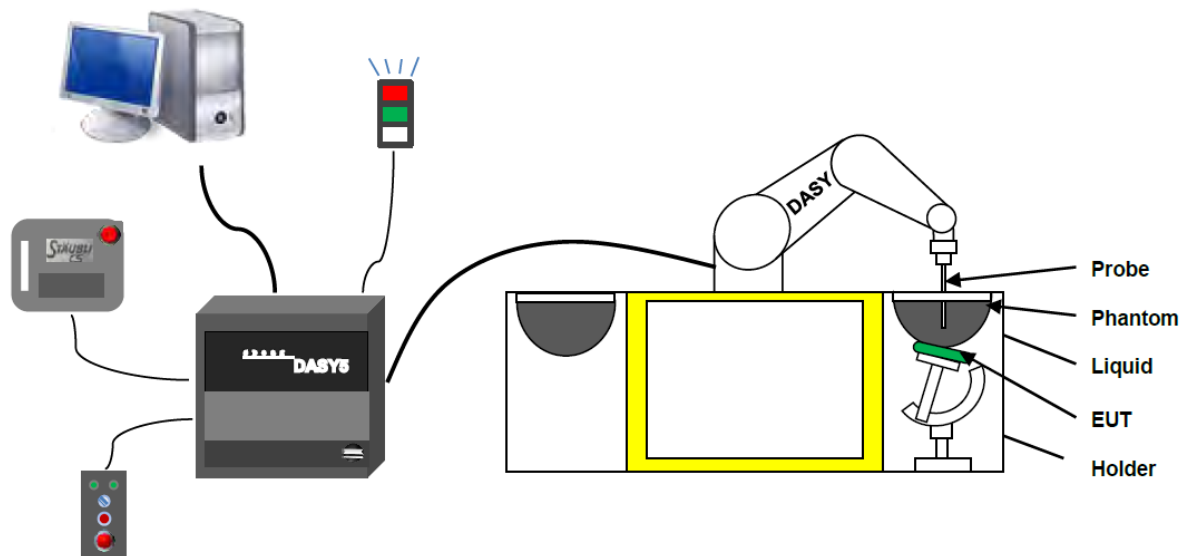
$$SAR = \frac{\sigma E^2}{\rho}$$

Where:  $\sigma$  is the conductivity of the tissue,

$\rho$  is the mass density of the tissue and  $E$  is the RMS electrical field strength.

## 4.2 DASY SAR System

### 4.2.1 DASY SAR System Diagram



The DASY5 system for performing compliance tests consists of the following items:

1. A standard high precision 6-axis robot (Stäubli RX family) with controller and software. An arm extension for accommodating the data acquisition electronics (DAE).
2. A dosimetric probe, i.e. an isotropic E-field probe optimized and calibrated for usage in tissue simulating liquid. The probe is equipped with an optical surface detector system.
3. A data acquisition electronic (DAE) which performs the signal amplification, signal multiplexing, AD-conversion, offset measurements, mechanical surface detection, collision detection, etc. The unit is battery powered with standard or rechargeable batteries. The signal is optically transmitted to the EOC.
4. A unit to operate the optical surface detector which is connected to the EOC.
5. The Electro-Optical Coupler (EOC) performs the conversion from the optical into a digital electric signal of the DAE. The EOC is connected to the DASY5 measurement server.
6. The DASY5 measurement server, which performs all real-time data evaluation for field measurements and surface detection, controls robot movements and handles safety operation.
7. DASY5 software and SEMCAD data evaluation software.
8. Remote control with teach panel and additional circuitry for robot safety such as warning lamps, etc.
9. The generic twin phantom enabling the testing of left-hand and right-hand usage.
10. The device holder for handheld mobile phones.
11. Tissue simulating liquid mixed according to the given recipes.
12. System validation dipoles allowing to validate the proper functioning of the system.

#### 4.2.2 Robot

The Dasy SAR system uses the high precision robots. Symmetrical design with triangular core Built-in optical fiber for surface detection system For the 6-axis controller system, Built-in shielding against static charges PEEK enclosure material (resistant to organic solvents). The robot series have many features that are important for our application:



- **High precision**  
(repeatability  $\pm 0.02$  mm)
- **High reliability**  
(industrial design)
- **Low maintenance costs**  
(virtually maintenance free due to direct drive gears; no belt drives)
- **Jerk-free straight movements**  
(brush less synchron motors; no stepper motors)
- **Low ELF interference**  
(motor control fields shielded via the closed metallic construction shields)

### 4.2.3 E-Field Probe

The probe is specially designed and calibrated for use in liquids with high permittivities for the measurements the Specific Dosimetric E-Field Probe EX3DV4 with following specifications is used.

Construction	Symmetrical design with triangular core Built-in optical fiber for surface detection system Built-in shielding against static charges PEEK enclosure material (resistant to organic solvents, e.g., glycoether)
Calibration	ISO/IEC 17025 calibration service available
Frequency	10 MHz to 6 GHz; Linearity: $\pm 0.2$ dB (30 MHz to 6 GHz)
Directivity	$\pm 0.2$ dB in HSL (rotation around probe axis) ; $\pm 0.4$ dB in HSL (rotation normal to probe axis)
Dynamic range	5 $\mu$ W/g to > 100 mW/g; Linearity: $\pm 0.2$ dB
Dimensions	Overall length: 337 mm (Tip: 9 mm) Tip diameter: 2.5 mm (Body: 10 mm) Distance from probe tip to dipole centers: 1.0 mm
Application	General dosimetry up to 3 GHz Compliance tests of mobile phones Fast automatic scanning in arbitrary phantoms (EX3DV4)



#### E-Field Probe Calibration Process

Probe calibration is realized, in compliance with CENELEC EN 62209-1/-2 and IEEE 1528 std, with CALISAR, Antennassa proprietary calibration system. The calibration is performed with the EN 62209-1/2 annexe technique using reference guide at the five frequencies.

#### 4.2.4 Data Acquisition Electronics

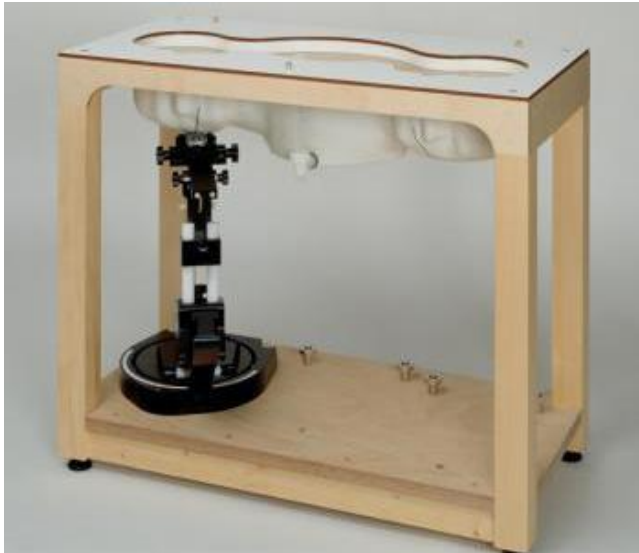
The data acquisition electronics (DAE) consist of a highly sensitive electrometer-grade preamplifier with auto-zeroing, a channel and gain-switching multiplexer, a fast 16 bit AD-converte and a command decoder with a control logic unit. Transmission to the measurement server is accomplished through an optical downlink for data and status information, as well as an optical uplink for commands and the clock.



- Input Impedance: 200M $\Omega$ m
- The Inputs: Symmetrical and Floating
- Commom Mode Rejection: Above 80dB

### 4.2.5 Phantoms

For the measurements the Specific Anthropomorphic Mannequin (SAM) defined by the IEEE SCC-34/SC2 group is used. The phantom is a polyurethane shell integrated in a wooden table. The thickness of the phantom amounts to 2mm +/- 0.2mm. It enables the dosimetric evaluation of left and right phone usage and includes an additional flat phantom part for the simplified performance check. The phantom set-up includes a cover, which prevents the evaporation of the liquid.



- Left hand
- Right hand
- Flat phantom

**Photo of Phantom SN1576**



Serial Number	Material	Length	Height
SN 1576 SAM	Vinylester, glass fiber reinforced	1000	500



#### 4.2.6 Device Holder

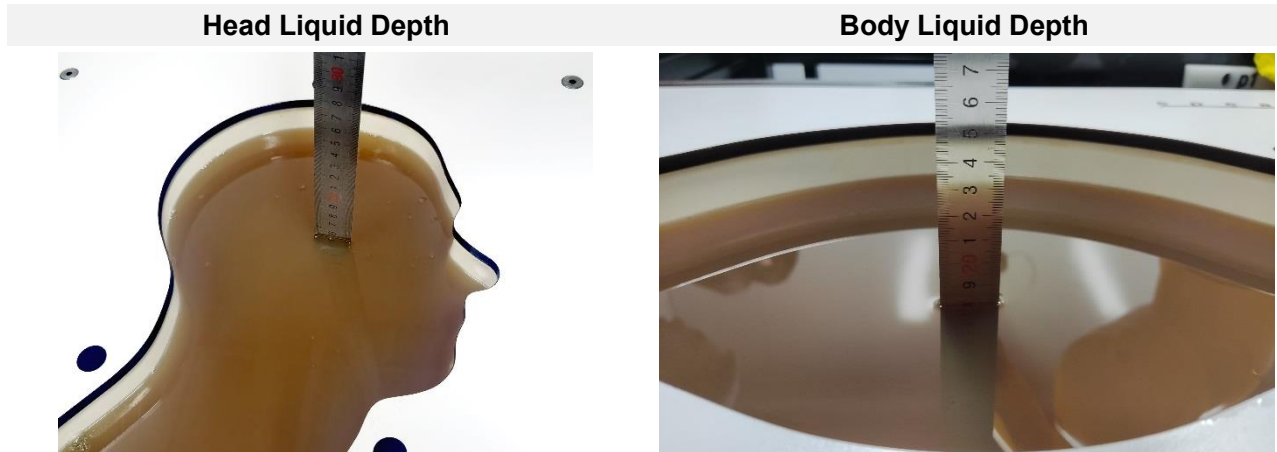
The DASY5 device holder has two scales for device rotation (with respect to the body axis) and the device inclination (with respect to the line between the ear openings). The plane between the ear openings and the mouth tip has a rotation angle of  $65^\circ$ . The bottom plate contains three pair of bolts for locking the device holder. The device holder positions are adjusted to the standard measurement positions in the three sections. This device holder is used for standard mobile phones or PDA's only. If necessary an additional support of polystyrene material is used. Larger DUT's (e.g. notebooks) cannot be tested using this device holder. Instead a support of bigger polystyrene cubes and thin polystyrene plates is used to position the DUT in all relevant positions to find and measure spots with maximum SAR values. Therefore those devices are normally only tested at the flat part of the SAM.



The positioning system allows obtaining cheek and tilting position with a very good accuracy. Incompliance with CENELEC, the tilt angle uncertainty is lower than  $1^\circ$ .

#### 4.2.7 Simulating Liquid

For SAR measurement of the field distribution inside the phantom, the phantom must be filled with homogeneous tissue simulating liquid to a depth of at least 15 cm. For head SAR testing, the liquid height from the ear reference point (ERP) of the phantom to the liquid top surface is larger than 15 cm. For body SAR testing, the liquid height from the center of the flat phantom to the liquid top surface is larger than 15 cm. The nominal dielectric values of the tissue simulating liquids in the phantom and the tolerance of 5%.



The following table gives the recipes for tissue simulating liquid.

TSL	Manufacturer / Model	Freq Range (MHz)	Main Ingredients
Head WideBand	SPEAG HBBL600-10000V6	600-10000	Ethenediol, Sodium petroleum sulfonate, Hexylene Glycol / 2-Methyl-pentane-2.4-diol, Alkoxyated alcohol

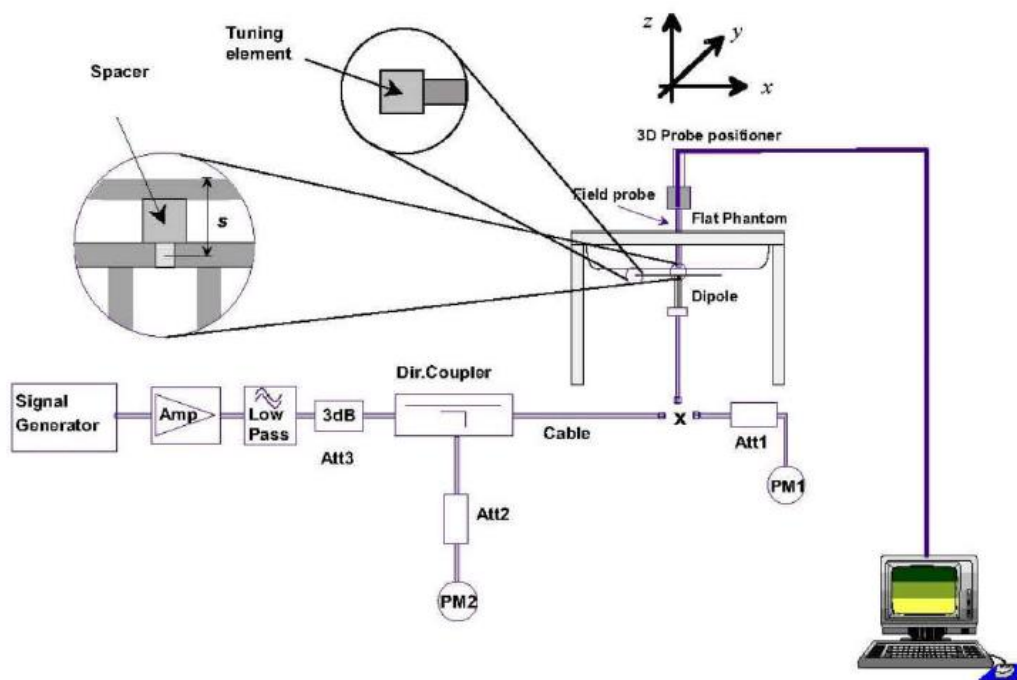
## 5 SYSTEM VERIFICATION

### 5.1 Purpose of System Check

The system performance check verifies that the system operates within its specifications. System and operator errors can be detected and corrected. It is recommended that the system performance check be performed prior to any usage of the system in order to guarantee reproducible results. The system performance check uses normal SAR measurements in a simplified setup with a well characterized source. This setup was selected to give a high sensitivity to all parameters that might fail or vary over time. The system check does not intend to replace the calibration of the components, but indicates situations where the system uncertainty is exceeded due to drift or failure.

### 5.2 System Check Setup

In the simplified setup for system evaluation, the EUT is replaced by a calibrated dipole and the power source is replaced by a continuous wave that comes from a signal generator. The calibrated dipole must be placed beneath the flat phantom section of the SAM twin phantom with the correct distance holder. The distance holder should touch the phantom surface with a light pressure at the reference marking and be oriented parallel to the long side of the phantom. The equipment setup is shown below:



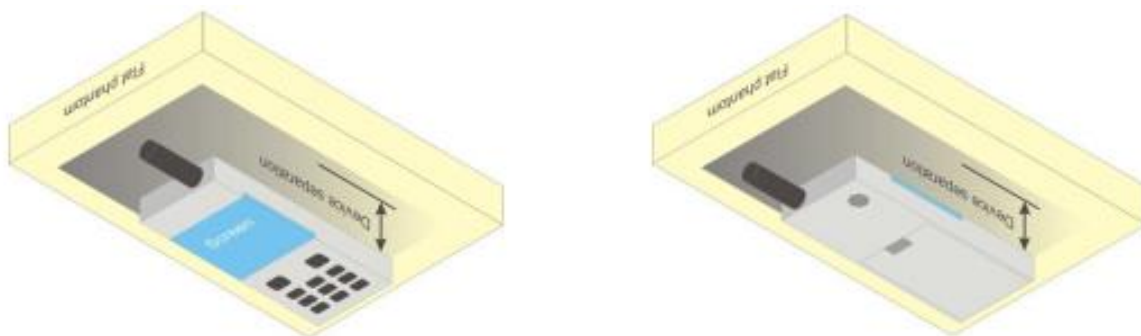
## 6 TEST POSITION CONFIGURATIONS

### 6.1 Body-worn Position Conditions

Body-worn accessory exposure is typically related to voice mode operations when handsets are carried in body-worn accessories. The body-worn accessory procedures in KDB 447498 are used to test for body-worn accessory SAR compliance, without a headset connected to it. This enables the test results for such configuration to be compatible with that required for hotspot mode when the body-worn accessory test separation distance is greater than or equal to that required for hotspot mode. When the reported SAR for a body-worn accessory.

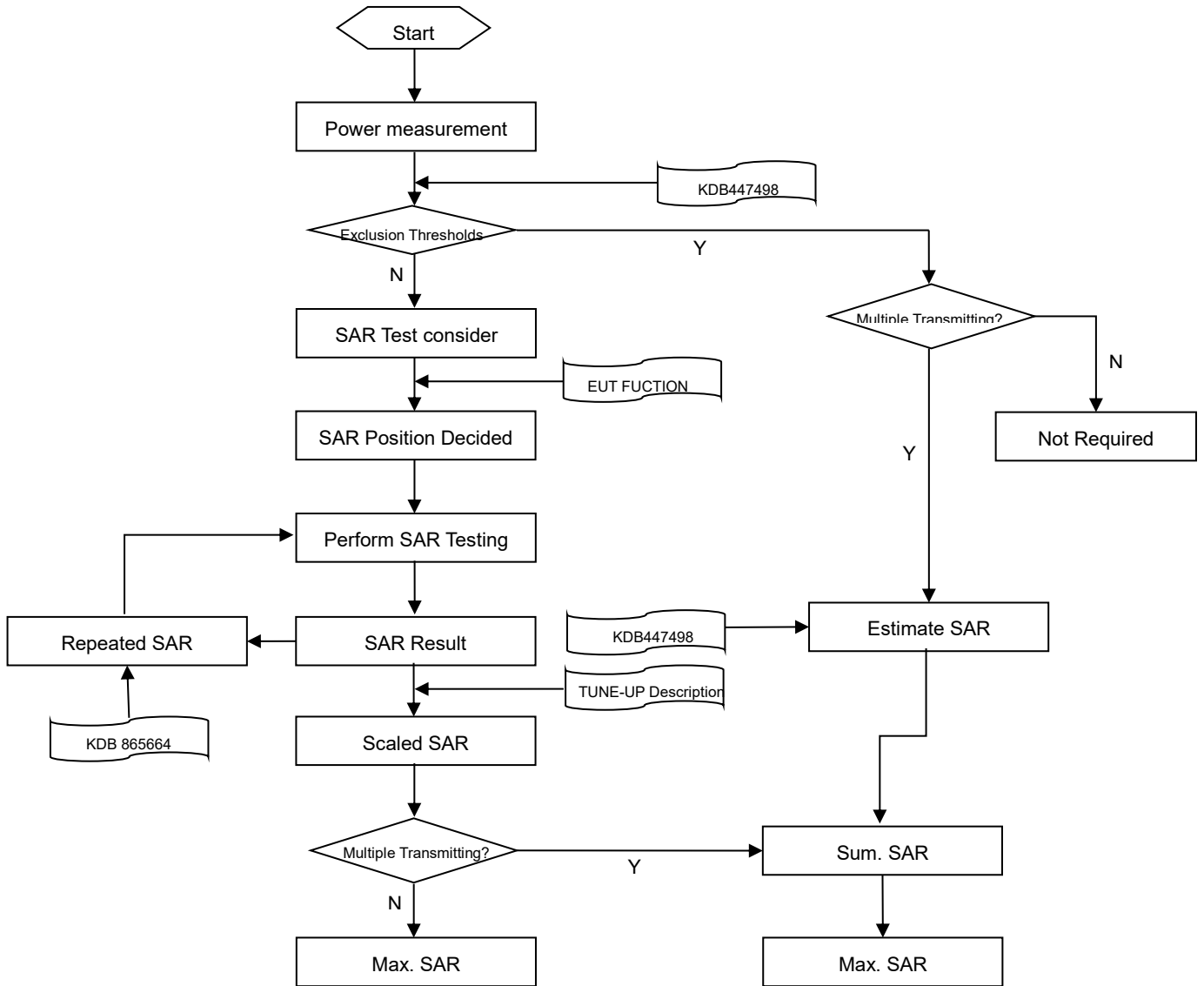
Body-worn accessories that do not contain metallic or conductive components may be tested according to worst-case exposure configurations, typically according to the smallest test separation distance required for the group of body-worn accessories with similar operating and exposure characteristics. All body-worn accessories containing metallic components are tested in conjunction with the host device.

Body-worn accessory SAR compliance is based on a single minimum test separation distance for all wireless and operating modes applicable to each body-worn accessory used by the host, and according to the relevant voice and/or data mode transmissions and operations. If a body-worn accessory supports voice only operations in its normal and expected use conditions, testing of data mode for body-worn compliance is not required. A conservative minimum test separation distance for supporting off-the-shelf body-worn accessories that may be acquired by users of consumer handsets is used to test for body-worn accessory SAR compliance. This distance is determined by the handset manufacturer, according to the requirements of Supplement C 01-01. Devices that are designed to operate on the body of users using lanyards and straps, or without requiring additional body-worn accessories, will be tested using a conservative minimum test separation distance  $\leq 5$  mm to support compliance.



# 7 MEASUREMENT PROCEDURE

## 7.1 Measurement Process Diagram



## 7.2 SAR Scan General Requirement

Probe boundary effect error compensation is required for measurements with the probe tip closer than half a probe tip diameter to the phantom surface. Both the probe tip diameter and sensor offset distance must satisfy measurement protocols; to ensure probe boundary effect errors are minimized and the higher fields closest to the phantom surface can be correctly measured and extrapolated to the phantom surface for computing 1 g SAR. Tolerances of the post-processing algorithms must be verified by the test laboratory for the scan resolutions used in the SAR measurements, according to the reference distribution functions specified in IEEE Std 1528-2013.

		≤3GHz	>3GHz
Maximum distance from closest measurement point (geometric center of probe sensors) to phantom surface		5±1 mm	$\frac{1}{2} \cdot \delta \cdot \ln(2) \pm 0.5$ mm
Maximum probe angle from probe axis to phantom surface normal at the measurement location		30°±1°	20°±1°
Maximum area scan spatial resolution: $\Delta x$ Area , $\Delta y$ Area		≤ 2 GHz: ≤ 15 mm 2 – 3 GHz: ≤ 12 mm	3–4 GHz: ≤ 12 mm 4 – 6 GHz: ≤ 10 mm
		When the x or y dimension of the test device, in the measurement plane orientation, is smaller than the above, the measurement resolution must be ≤ the corresponding x or y dimension of the test device with at least one measurement point on the test device.	
Maximum zoom scan spatial resolution: $\Delta x$ Zoom , $\Delta y$ Zoom		≤ 2 GHz: ≤ 8 mm 2 – 3 GHz: ≤ 5 mm*	3–4 GHz: ≤ 5 mm* 4 – 6 GHz: ≤ 4 mm*
Maximum zoom scan spatial resolution, normal to phantom surface	uniform grid: $\Delta z$ Zoom (n)	≤ 5 mm	3–4 GHz: ≤ 4 mm
			4–5 GHz: ≤ 3 mm
			5–6 GHz: ≤ 2 mm
	graded grid	$\Delta z$ Zoom (1): between 1st two points closest to phantom surface	≤ 4 mm
4–5 GHz: ≤ 2.5 mm			
	$\Delta z$ Zoom (n>1): between subsequent points	≤ 1.5· $\Delta z$ Zoom (n-1)	
Minimum zoom scan volume	x, y, z	≥30 mm	3–4 GHz: ≥ 28 mm
			4–5 GHz: ≥ 25 mm
			5–6 GHz: ≥ 22 mm

### Note:

1.  $\delta$  is the penetration depth of a plane-wave at normal incidence to the tissue medium; see draft standard IEEE P1528-2011 for details.
2. \* When zoom scan is required and the reported SAR from the area scan based 1 g SAR estimation procedures of KDB 447498 is ≤ 1.4 W/kg, ≤ 8 mm, ≤ 7 mm and ≤ 5 mm zoom scan resolution may be applied, respectively, for 2 GHz to 3GHz, 3 GHz to 4 GHz and 4 GHz to 6 GHz.

### 7.3 Measurement Procedure

The following steps are used for each test position

- a. Establish a call with the maximum output power with a base station simulator. The connection between the mobile and the base station simulator is established via air interface
- b. Measurement of the local E-field value at a fixed location. This value serves as a reference value for calculating a possible power drift.
- c. Measurement of the SAR distribution with a grid of 8 to 16mm \* 8 to 16 mm and a constant distance to the inner surface of the phantom. Since the sensors cannot directly measure at the inner phantom surface, the values between the sensors and the inner phantom surface are extrapolated. With these values the area of the maximum SAR is calculated by an interpolation scheme.
- d. Around this point, a cube of 30 \* 30 \* 30 mm or 32 \* 32 \* 32 mm is assessed by measuring 5 or 8 \* 5 or 8\*4 or 5 mm. With these data, the peak spatial-average SAR value can be calculated.

### 7.4 Area & Zoom Scan Procedure

First Area Scan is used to locate the approximate location(s) of the local peak SAR value(s). The measurement grid within an Area Scan is defined by the grid extent, grid step size and grid offset. Next, in order to determine the EM field distribution in a three-dimensional spatial extension, Zoom Scan is required. The Zoom Scan is performed around the highest E-field value to determine the averaged SAR-distribution over 10 g. Area scan and zoom scan resolution setting follows KDB 865664 D01v01r04 quoted below.

When the 1 g SAR of the highest peak is within 2 dB of the SAR limit, additional zoom scans are required for other peaks within 2 dB of the highest peak that have not been included in any zoom scan to ensure there is no increase in SAR.

## 8 CONDUCTED RF OUPUT POWER

### 8.1 WIFI

#### 8.1.1 2.4G WIFI

Band (GHz)	Mode	Channel	Freq. (MHz)	AV Power (dBm)	Tune-up Power Limit (dBm)	SAR Test Require.
2.4	802.11b	1	2412	18.27	19.00	Yes
		6	2437	<b>18.79</b>	19.00	Yes
		11	2462	18.74	19.00	Yes
	802.11g	1	2412	16.57	17.50	No
		6	2437	17.08	17.50	No
		11	2462	17.16	17.50	No
	802.11n(HT20)	1	2412	15.52	16.00	No
		6	2437	15.90	16.00	No
		11	2462	15.95	16.00	No
	802.11n(HT40)	3	2422	14.92	15.50	No
		6	2437	15.09	15.50	No
		9	2452	15.59	15.50	No

Note: According KDB 248227 D01 SAR is not required for the following 2.4 GHz OFDM conditions. When the highest reported SAR for DSSS is adjusted by the ratio of OFDM to DSSS specified maximum output power and the adjusted SAR is  $\leq 1.2$  W/kg.

Adjusted SAR = Report SAR \* (max power (OFDM)/ max power (DSSS)) = 0.316 \* (56.23 mw)/(79.43 mw) =0.224 W/kg, so the 2.4GHz OFDM SAR test is not required.



## 8.1.2 5G WIFI

Band (GHz)	Mode	Channel	Freq. (MHz)	AV Power (dBm)	Tune-up Power Limit (dBm)	SAR Test Require.
5.2	802.11a	36	5180	16.90	17.50	Yes
		40	5200	<b>17.16</b>	17.50	Yes
		48	5240	17.15	17.50	Yes
	802.11n(HT20)	36	5180	16.16	17.00	No
		40	5200	16.47	17.00	No
		48	5240	16.50	17.00	No
	802.11n(HT40)	38	5190	16.61	17.00	No
		46	5230	16.88	17.00	No
	802.11ac(VHT20)	36	5180	15.50	16.00	No
		40	5200	15.79	16.00	No
		48	5240	15.79	16.00	No
	802.11ac(VHT40)	38	5190	15.86	17.00	No
46		5230	16.17	17.00	No	
802.11ac(VHT80)	42	5210	14.08	15.00	No	
5.3	802.11a	52	5260	17.55	18.00	Yes
		60	5300	17.23	18.00	Yes
		64	5320	<b>17.58</b>	18.00	Yes
	802.11n(HT20)	52	5260	16.67	17.00	No
		60	5300	16.39	17.00	No
		64	5320	16.28	17.00	No
	802.11n(HT40)	54	5270	17.13	17.50	No
		62	5310	16.85	17.50	No
	802.11ac(VHT20)	52	5260	15.67	16.00	No
		60	5300	15.32	16.00	No
		64	5320	15.40	16.00	No
	802.11ac(VHT40)	54	5270	16.02	17.00	No
62		5310	15.80	17.00	No	
802.11ac(VHT80)	58	5290	14.35	15.00	No	
5.6	802.11a	100	5500	17.37	18.00	Yes
		116	5580	16.51	18.00	Yes
		140	5700	<b>17.43</b>	18.00	Yes
	802.11n(HT20)	100	5500	16.80	17.00	No
		116	5580	15.93	17.00	No
		140	5700	16.60	17.00	No
	802.11n(HT40)	102	5510	17.09	17.50	No
		110	5550	16.30	17.50	No
		134	5670	16.88	17.50	No
	802.11ac(VHT20)	100	5500	16.08	17.00	No
116		5580	15.31	17.00	No	

	802.11ac(VHT40)	140	5700	15.91	17.00	No
		102	5510	16.44	17.00	No
		110	5550	15.75	17.00	No
	802.11ac(VHT80)	134	5670	16.2	17.00	No
		106	5530	14.19	15.00	No
		122	5610	13.94	15.00	No
5.8	802.11a	149	5745	<b>18.04</b>	18.50	Yes
		157	5785	17.99	18.50	Yes
		165	5825	16.86	18.50	Yes
	802.11n(HT20)	149	5745	17.71	18.00	No
		157	5785	17.3	18.00	No
		165	5825	16.11	18.00	No
	802.11n(HT40)	151	5755	17.96	18.00	No
		159	5795	17.36	18.00	No
	802.11ac(VHT20)	149	5745	16.72	17.00	No
		157	5785	16.57	17.00	No
		165	5825	15.32	17.00	No
	802.11ac(VHT40)	151	5755	17.36	18.00	No
		159	5795	16.77	18.00	No
	802.11ac(VHT80)	155	5775	14.77	15.00	No

Note: When the same maximum output power is specified for both bands, begin SAR measurement in U-NII-2A band by applying the OFDM SAR requirements. If the highest reported SAR for a test configuration is  $\leq 1.2$  W/kg, SAR is not required for U-NII-1 band for that configuration (802.11 mode and exposure condition); otherwise, each band is tested independently for SAR.

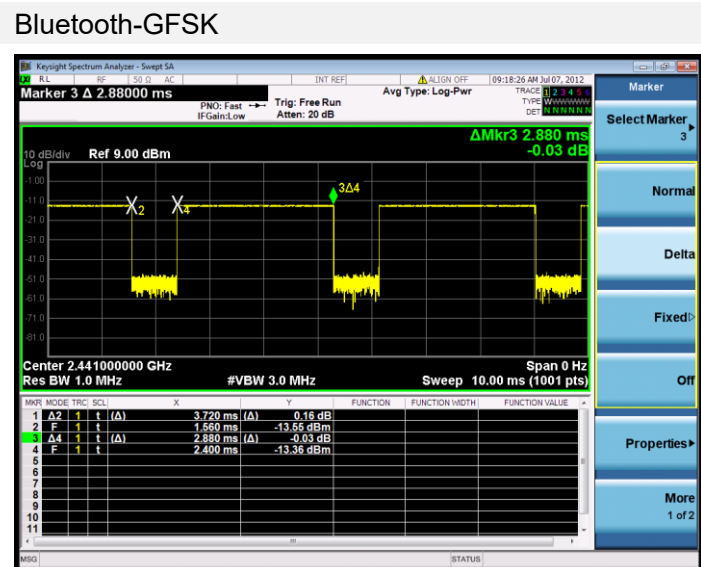
## 8.2 Bluetooth

Mode	GFSK			π/4-DQPSK		
Channel	0	39	78	0	39	78
Frequency (MHz)	2402	2441	2480	2402	2441	2480
AV Power (dBm)	15.55	<b>15.88</b>	14.54	15.32	14.93	13.75
Tune-Up Limit (dBm)	16.00	16.00	16.00	15.50	15.50	15.50
SAR Test Require	YES	YES	YES	NO	NO	NO
Mode	8-DPSK			BLE-1Mbps		
Channel	0	39	78	0	19	39
Frequency (MHz)	2402	2441	2480	2402	2440	2480
AV Power (dBm)	14.95	15.19	14.02	11.18	11.43	10.44
Tune-Up Limit (dBm)	15.50	15.50	15.50	12.00	12.00	12.00
SAR Test Require	NO	NO	NO	NO	NO	NO

Note 1: Since Bluetooth BR mode is the maximum output power mode, SAR measurements were performed with test software using DH5 modulation, and SAR measurement is not required for the EDR and LE. When the secondary mode is  $\leq \frac{1}{4}$  dB higher than the primary mode.

The Bluetooth duty cycle is 77.54 % as following figure, according to 2016 Oct. TCB workshop for Bluetooth SAR scaling need further consideration and the maximum duty cycle is 100%, therefore the actual duty cycle will be scaled up to 100% for Bluetooth reported SAR calculation.

### Duty Cycle



## 9 TEST EXCLUSION CONSIDERATION

For antenna location and support bands please refer the document "BL-SZ24A0252-AI EUT internal photo.pdf".

# 10 TEST RESULT

## 10.1 Bluetooth

### 10.1.1 Bluetooth Front of face SAR

Antenna	Mode	Position	Dist. (mm)	Ch.	Freq. (MHz)	Power Drift(dB)	1 g Meas SAR(W/kg)	Meas. Power (dBm)	Max. tune power (dBm)	Scaling Factor	Duty cycle (%)	Duty cycle Factor	1g Report SAR (W/kg)	Meas. No.
<b>Front of face</b>														
Ant.0(CH0)	Bluetooth-DH5	Front Side	10	39	2441	0.00	0.238	15.88	16.00	1.028	77.54	1.290	<b>0.316</b>	1#
		Front Side	10	0	2402	0.13	0.211	15.55	16.00	1.109	77.54	1.290	0.302	/
		Front Side	10	78	2480	0.04	0.155	14.54	16.00	1.400	77.54	1.290	0.280	/
Note: Refer to ANNEX C for the detailed test data for each test configuration.														

### 10.1.2 Bluetooth Limb SAR

Antenna	Mode	Position	Dist. (mm)	Ch.	Freq. (MHz)	Power Drift(dB)	10 g Meas SAR(W/kg)	Meas. Power (dBm)	Max. tune power (dBm)	Scaling Factor	Duty cycle (%)	Duty cycle Factor	10g Report SAR (W/kg)	Meas. No.
<b>Limb</b>														
Ant.0(CH0)	Bluetooth-DH5	Bottom Edge	0	39	2441	0.07	0.052	15.88	16.00	1.028	77.54	1.290	<b>0.069</b>	2#
		Bottom Edge	0	0	2402	0.19	0.044	15.55	16.00	1.109	77.54	1.290	0.063	/
		Bottom Edge	0	78	2480	-0.12	0.030	14.54	16.00	1.400	77.54	1.290	0.054	/
Note: Refer to ANNEX C for the detailed test data for each test configuration.														

## 10.2 WIFI 2.4GHZ

### 10.2.1 WIFI 2.4GHz Front of face SAR

Antenna	Mode	Position	Dist. (mm)	Ch.	Freq. (MHz)	Power Drift(dB)	1 g Meas SAR(W/kg)	Meas. Power (dBm)	Max. tune-up power (dBm)	Scaling Factor	Duty cycle (%)	Duty cycle Factor	1g Report SAR (W/kg)	Meas. No.
<b>Front of face</b>														
Ant.0(CH0)	802.11b	Front Side	10	6	2437	0.00	0.304	18.79	19.00	1.050	94.33	1.060	<b>0.338</b>	3#
		Front Side	10	1	2412	-0.07	0.260	18.27	19.00	1.183	94.33	1.060	0.326	/
		Front Side	10	11	2462	-0.18	0.288	18.74	19.00	1.062	94.33	1.060	0.324	/
Note: Refer to ANNEX C for the detailed test data for each test configuration.														

### 10.2.2 WIFI 2.4GHz Limb SAR

Antenna	Mode	Position	Dist. (mm)	Ch.	Freq. (MHz)	Power Drift(dB)	10 g Meas SAR(W/kg)	Meas. Power (dBm)	Max. tune power (dBm)	Scaling Factor	Duty cycle (%)	Duty cycle Factor	10g Report SAR (W/kg)	Meas. No.
<b>Limb</b>														
Ant.0(CH0)	802.11 b	Bottom Edge	0	6	2437	0.09	0.047	18.79	19.00	1.050	94.33	1.060	<b>0.052</b>	4#
		Bottom Edge	0	1	2412	0.08	0.031	18.27	19.00	1.183	94.33	1.060	0.039	/
		Bottom Edge	0	11	2462	0.03	0.035	18.74	19.00	1.062	94.33	1.060	0.039	/
Note: Refer to ANNEX C for the detailed test data for each test configuration.														

## 10.3 WIFI 5GHz

### 10.3.1 WIFI 5GHz Front of face SAR

Antenna	Band	Mode	Position	Dist. (mm)	Ch.	Freq. (MHz)	Power Drift(dB)	1 g Meas SAR(W/kg)	Meas. Power (dBm)	Max. tune-up power (dBm)	Scaling Factor	Duty cycle (%)	Duty cycle Factor	1g Report SAR (W/kg)	Meas. No.
<b>Front of face</b>															
Ant.0(CH0)	5.2&3G	802.11a	Front Side	10	64	5320	0.00	0.184	17.58	18.00	1.102	93.88	1.065	<b>0.216</b>	5#
			Front Side	10	52	5260	0.11	0.177	17.55	18.00	1.109	93.88	1.065	0.209	/
			Front Side	10	60	5300	-0.18	0.168	17.23	18.00	1.194	93.88	1.065	0.214	/
Ant.0(CH0)	5.6G	802.11a	Front Side	10	140	5700	0.09	0.300	17.43	18.00	1.140	93.88	1.065	<b>0.364</b>	6#
			Front Side	10	100	5500	0.16	0.265	17.37	18.00	1.156	93.88	1.065	0.326	/
			Front Side	10	116	5580	-0.06	0.232	16.51	18.00	1.409	93.88	1.065	0.348	/
Ant.0(CH0)	5.8G	802.11a	Front Side	10	149	5745	0.01	0.387	18.04	18.50	1.112	93.88	1.065	<b>0.458</b>	7#
			Front Side	10	157	5785	0.00	0.365	17.99	18.50	1.125	93.88	1.065	0.437	/
			Front Side	10	165	5825	0.00	0.237	16.86	18.50	1.459	93.88	1.065	0.368	/
Note: Refer to ANNEX C for the detailed test data for each test configuration.															

### 10.3.2 WIFI 5GHz Limb SAR

Antenna	Mode	Position	Dist. (mm)	Ch.	Freq. (MHz)	Power Drift(dB)	10 g Meas SAR(W/kg)	Meas. Power (dBm)	Max. tune power (dBm)	Scaling Factor	Duty cycle (%)	Duty cycle Factor	10g Report SAR (W/kg)	Meas. No.	
<b>Limb</b>															
Ant.0(CH0)	5.2&3G	802.11a	Bottom Edge	0	64	5320	0.03	0.044	17.58	18.00	1.102	93.88	1.065	<b>0.052</b>	8#
			Bottom Edge	0	52	5260	0.06	0.040	17.55	18.00	1.109	93.88	1.065	0.047	/
			Bottom Edge	0	60	5300	-0.04	0.031	17.23	18.00	1.194	93.88	1.065	0.039	/
Ant.0(CH0)	5.6G	802.11a	Bottom Edge	0	140	5700	0.05	0.037	17.43	18.00	1.140	93.88	1.065	<b>0.045</b>	9#
			Bottom Edge	0	100	5500	0.13	0.030	17.37	18.00	1.156	93.88	1.065	0.037	/
			Bottom Edge	0	116	5580	0.15	0.020	16.51	18.00	1.409	93.88	1.065	0.030	/
Ant.0(CH0)	5.8G	802.11a	Bottom Edge	0	149	5745	0.03	0.026	18.04	18.50	1.112	93.88	1.065	<b>0.031</b>	10#
			Bottom Edge	0	157	5785	-0.12	0.021	17.99	18.50	1.125	93.88	1.065	0.025	/
			Bottom Edge	0	165	5825	0.18	0.018	16.86	18.50	1.459	93.88	1.065	0.028	/
Note: Refer to ANNEX C for the detailed test data for each test configuration.															

## 10.4 NFC SAR

According to the ANSI C63.10 clause 11.12.2.2:

The value of maximum peak output power is according to the method described in ANSI C63.10 clause 11.12.2.2 General procedure for conducted measurements in restricted bands:

- a) Measure the conducted output power (in dBm) using the detector specified (see guidance regarding measurement procedures for determining quasi-peak, peak, and average conducted output power, respectively).
- b) Add the maximum transmit antenna gain (in dBi) to the measured output power level to determine the EIRP level (see guidance on determining the applicable antenna gain)
- c) Add the appropriate maximum ground reflection factor to the EIRP level (6 dB for frequencies  $\leq$  30 MHz, 4.7 dB for frequencies between 30 MHz and 1000 MHz, inclusive and 0 dB for frequencies  $>$  1000 MHz).
- d) For devices with multiple antenna-ports, measure the power of each individual chain and sum the EIRP of all chains in linear terms (e.g., Watts, mW).
- e) Convert the resultant EIRP level to an equivalent electric field strength using the following relationship:  $E = \text{EIRP} - 20\log D + 104.8$

where:

E = electric field strength in dB $\mu$ V/m,

EIRP = equivalent isotropic radiated power in dBm

D = specified measurement distance in meters.

Mode	f (MHz)	Max. E-Field strength (dB $\mu$ V/m)	D (m)	Ground reflection factor (dB)	ERP (dBm)
NFC (13.56MHz)	13.56	49.92	3	6	-28.88
Note:					
1. Add the appropriate maximum ground reflection factor to the ERP level (6 dB for frequencies $\leq$ 30 MHz).					
2.ERP= 50.55+20*Log(10) - 104.8 + 6 =-28.88 (dBm)					

According to the FCC KDB 447498 D04

Estimated SAR: SAR test =1.6 · Pant / Pth [W/kg]

Estimated SAR	1.6 · Pant / Pth [W/kg]		
Pmeas.(dBm)	-28.88	Pmeas.(mW)	0.0013
Pth.(mW)	443.13		
NFC Estimated 1g SAR [W/kg]	<0.001		



#### 10.4.1 Highest Total Exposure Ratio of Simultaneous Transmission

NFC multi-transmit requires the use of the TER formula:

$$TER = \sum_{k=1}^{N_s} \left( \frac{SAR_k}{SAR_{lim}} \right) + \sum_{k=1}^{N_f} \left( \frac{MPE_{field, k}}{MPE_{field, lim}} \right)^2 + \sum_{k=1}^{N_{PD}} \left( \frac{MPE_{PD, k}}{MPE_{PD, lim}} \right) \quad \text{The}$$

maximum SAR value for Simultaneous Transmission is 0.458 [W/kg]. Therefore, the worst TER  
 $= (0.458 + 0.001) / 1.6 = 0.287 < 1$ , the NFC SAR transmit simultaneously Pass.

## 11 SAR Measurement Variability

According to KDB 865664 D01, SAR measurement variability was assessed for each frequency band, which is determined by the SAR probe calibration point and tissue-equivalent medium used for the device measurements. When both head and body tissue-equivalent media are required for SAR measurements in a frequency band, the variability measurement procedures should be applied to the tissue medium with the highest measured SAR, using the highest measured SAR configuration for that tissue-equivalent medium. Alternatively, if the highest measured SAR for both head and body tissue-equivalent media are  $\leq 1.45$  W/kg and the ratio of these highest SAR values, i.e., largest divided by smallest value, is  $\leq 1.10$ , the highest SAR configuration for either head or body tissue-equivalent medium may be used to perform the repeated measurement. These additional measurements are repeated after the completion of all measurements requiring the same head or body tissue-equivalent medium in a frequency band. The test device should be returned to ambient conditions (normal room temperature) with the battery fully charged before it is re-mounted on the device holder for the repeated measurement(s) to minimize any unexpected variations in the repeated results.

SAR repeated measurement procedure:

1. When the highest measured SAR is  $< 0.80$  W/kg, repeated measurement is not required.
2. When the highest measured SAR is  $\geq 0.80$  W/kg, repeat that measurement once.
3. If the ratio of largest to smallest SAR for the original and first repeated measurements is  $> 1.20$ , or when the original or repeated measurement is  $\geq 1.45$  W/kg, perform a second repeated measurement.
4. If the ratio of largest to smallest SAR for the original, first and second repeated measurements is  $> 1.20$ , and the original, first or second repeated measurement is  $\geq 1.5$  W/kg, perform a third repeated measurement.
5. For 1g SAR, the highest measured 1g SAR is  $0.387 < 0.8$  W/kg, repeated measurement is not required.

## 12 SIMULTANEOUS TRANSMISSION

Note: WiFi 2.4G/5G&Bluetooth can't transmit simultaneously.

## 13 TEST EQUIPMENTS LIST

Description	Manufacturer	Model	Serial No./Version	Cal. Date	Cal. Due
PC	Dell	N/A	N/A	N/A	N/A
Test Software	Speag	DASY5	52.8.8.1222	N/A	N/A
2450MHz Validation Dipole	Speag	D2450V2	SN: 952	2024/05/07	2027/05/06
5GHz Validation Dipole	Speag	D5GHzV2	SN: 1200	2024/05/09	2027/05/08
Data Acquisition Electronics	Speag	DAE4	SN: 1711	2024/03/18	2025/03/17
E-Field Probe	Speag	EX3DV4	SN: 7893	2024/09/05	2025/09/04
Signal Generator	R&S	SMB100A	177746	2024/04/24	2025/04/23
Power Meter	R&S	NRVD-B2	835843/014	2024/08/08	2025/08/07
Power Sensor	R&S	NRV-Z4	100381	2024/08/08	2025/08/07
Power Sensor	R&S	NRV-Z2	100211	2024/08/08	2025/08/07
Wireless Communication Test Set	Anritsu	MT8820C	6201144551	2024/05/14	2025/05/13
Network Analyzer	Agilent	E5071C	MY46103472	2024/09/11	2025/09/10
Thermometer	Elitech	RC-4HC	EF7216002985	2024/10/31	2025/10/30
Thermometer	Elitech	RC-4HC	EF720B004811	2024/10/31	2025/10/30
Power Amplifier	Mini-Circuits	ZVA-183W-S+	932502132	N/A	N/A
Dielectric Probe Kit	Speag	DAK3.5	SN: 1312	N/A	N/A
Phantom	Speag	SAM	SN: 1576	N/A	N/A
Attenuator	COM-MW	ZA-S1-31	1305003187	N/A	N/A
Directional coupler	AA-MCS	AAMCS-UDC	000272	N/A	N/A

Note: For dipole antennas, BALUN has adopted 3 years as calibration intervals, and on annual basis, every measurement dipole has been evaluated and is in compliance with the following criteria:

1. There is no physical damage on the dipole;
2. System validation with specific dipole is within 10% of calibrated value;
3. Return-loss in within 20% of calibrated measurement.
4. Impedance (real or imaginary parts) in within 5 Ohms of calibrated measurement.

## ANNEX A SIMULATING LIQUID VERIFICATION RESULT

The dielectric parameters of the liquids were verified prior to the SAR evaluation using a DAK3.5 Dielectric Probe Kit.

Date	Fre. (MHz)	Temp. (°C)	Meas. Conductivity ( $\sigma$ ) (S/m)	Meas. Permittivity ( $\epsilon$ )	Target Conductivity ( $\sigma$ ) (S/m)	Target Permittivity ( $\epsilon$ )	Conductivity Tolerance (%)	Permittivity Tolerance (%)
2025.02.01	2450	21.1	1.83	38.65	1.80	39.20	1.67	-1.40
2025.02.02	5250	21.4	4.64	36.81	4.71	35.93	-1.49	2.45
2025.02.03	5600	21.2	5.10	35.15	5.07	35.53	0.59	-1.07
2025.02.04	5750	21.3	5.17	35.75	5.22	35.36	-0.96	1.10

Note: The tolerance limit of Conductivity and Permittivity is  $\pm 5\%$ .

## ANNEX B SYSTEM CHECK RESULT

Comparing to the original SAR value provided by SPEAG, the validation data should be within its specification of 10 %(for 1 g).

Date	Freq. (MHz)	Power (mW)	Measured SAR (W/kg)	Normalized SAR (W/kg)	Dipole SAR (W/kg)	Tolerance (%)
2025.02.01	2450	100	5.45	54.50	52.60	3.61
2025.02.02	5250	100	7.61	76.10	77.70	-2.06
2025.02.03	5600	100	8.41	84.10	81.30	3.44
2025.02.04	5750	100	7.53	75.30	77.60	-2.96

Note: The tolerance limit of System validation  $\pm 10\%$ .

# System Performance Check Data (2450MHz)

Date: 2025.02.01

Communication System Band: D2450 (2450.0 MHz); Frequency: 2450 MHz; Duty Cycle: 1:1

Medium parameters used:  $f = 2450$  MHz;  $\sigma = 1.825$  S/m;  $\epsilon_r = 38.649$ ;  $\rho = 1000$  kg/m<sup>3</sup>

Phantom section: Flat Section

Ambient Temperature: 22.3°C Liquid Temperature: 21.1°C

DASY5 Configuration:

- Probe: EX3DV4 - SN7893; ConvF(6.98, 6.98, 6.98); Calibrated: 2024.09.05;
- Sensor-Surface: 4mm (Mechanical Surface Detection)
- Electronics: DAE4 Sn1711; Calibrated: 2024.03.18
- Phantom: SAM1; Type: QD000P40CD; Serial: TP:1576
- Measurement SW: DASY52, Version 52.8 (8); SEMCAD X Version 14.6.10 (7331)

**CW2450/Area Scan (81x81x1):** Interpolated grid: dx=1.200 mm, dy=1.200 mm

Maximum value of SAR (interpolated) = 6.75 W/kg

**CW2450/Zoom Scan (7x7x7)/Cube 0:** Measurement grid: dx=5mm, dy=5mm, dz=5mm

Reference Value = 58.89 V/m; Power Drift = -0.06 dB

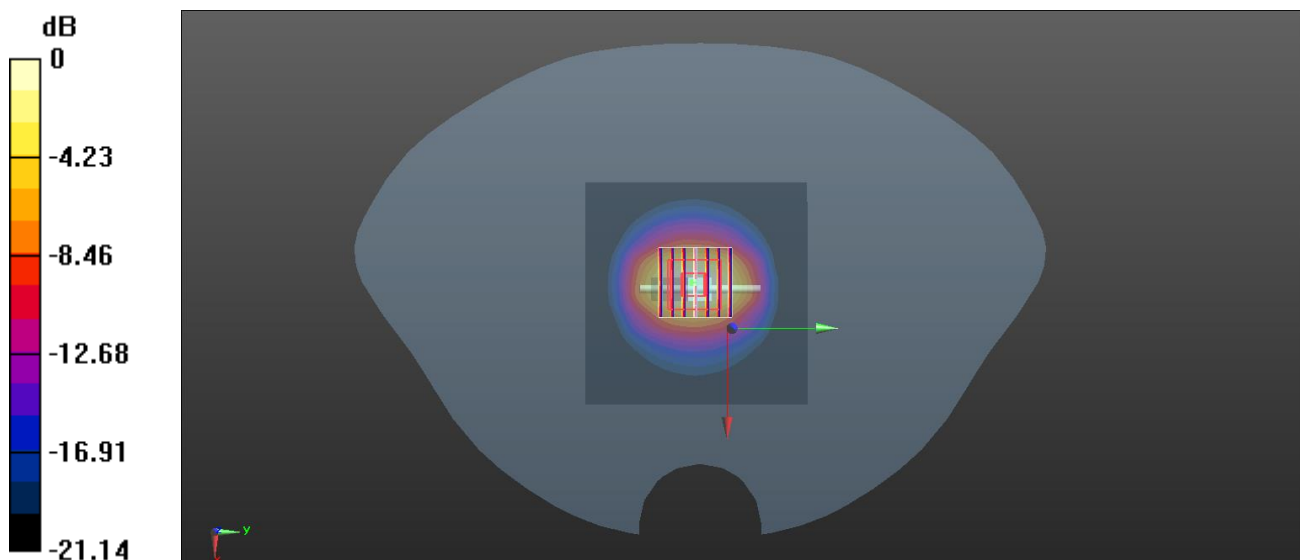
Peak SAR (extrapolated) = 11.4 W/kg

**SAR(1 g) = 5.45 W/kg; SAR(10 g) = 2.53 W/kg**

Smallest distance from peaks to all points 3 dB below = 10 mm

Ratio of SAR at M2 to SAR at M1 = 50.1%

Maximum value of SAR (measured) = 6.20 W/kg



0 dB = 6.20 W/kg

# System Performance Check Data (5250MHz)

Date: 2025.02.02

Communication System Band: D5GHz (5000.0 - 6000.0 MHz); Frequency: 5250 MHz; Duty Cycle: 1:1

Medium parameters used (interpolated):  $f = 5250$  MHz;  $\sigma = 4.643$  S/m;  $\epsilon_r = 36.813$ ;  $\rho = 1000$  kg/m<sup>3</sup>

Phantom section: Flat Section

Ambient Temperature: 22.5°C Liquid Temperature: 21.4°C

DASY5 Configuration:

- Probe: EX3DV4 - SN7893; ConvF(5.44, 5.44, 5.44); Calibrated: 2024.09.05;
- Sensor-Surface: 2mm (Mechanical Surface Detection)
- Electronics: DAE4 Sn1711; Calibrated: 2024.03.18
- Phantom: SAM1; Type: QD000P40CD; Serial: TP:1576
- Measurement SW: DASY52, Version 52.8 (8); SEMCAD X Version 14.6.10 (7331)

**CW5250/Area Scan (101x101x1):** Interpolated grid: dx=1.000 mm, dy=1.000 mm

Maximum value of SAR (interpolated) = 15.8 W/kg

**CW5250/Zoom Scan (7x7x12)/Cube 0:** Measurement grid: dx=4mm, dy=4mm, dz=2mm

Reference Value = 43.48 V/m; Power Drift = -0.05 dB

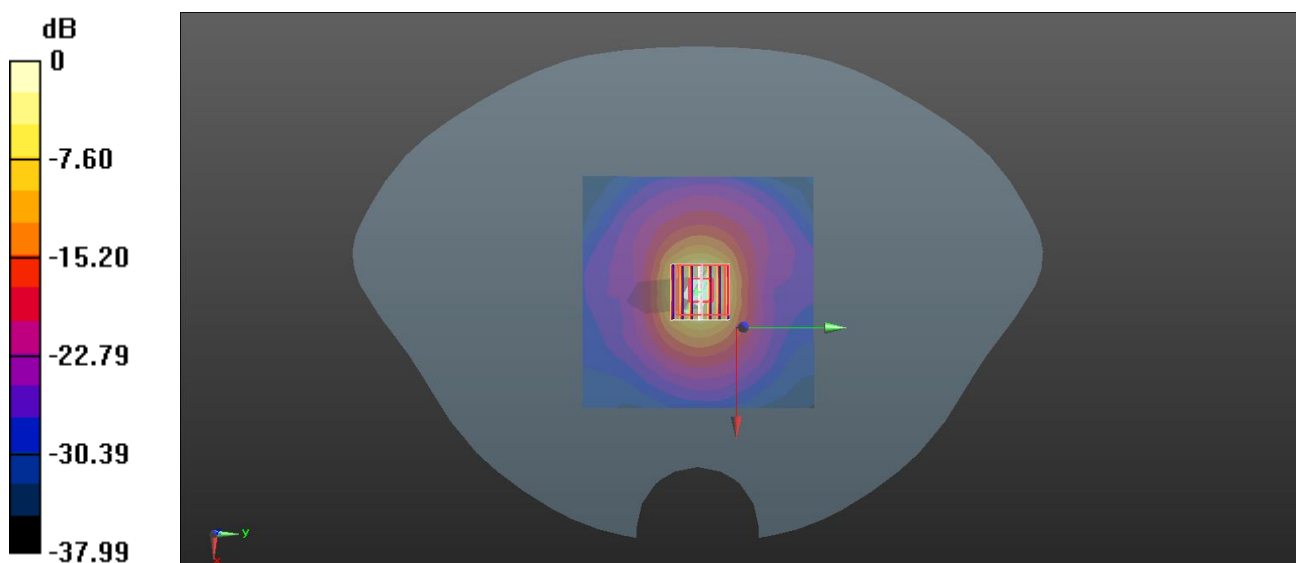
Peak SAR (extrapolated) = 30.7 W/kg

**SAR(1 g) = 7.61 W/kg; SAR(10 g) = 2.15 W/kg**

Smallest distance from peaks to all points 3 dB below = 7.4 mm

Ratio of SAR at M2 to SAR at M1 = 54.8%

Maximum value of SAR (measured) = 15.9 W/kg



0 dB = 15.9 W/kg



# System Performance Check Data (5600MHz)

Date: 2025.02.03

Communication System Band: D5GHz (5000.0 - 6000.0 MHz); Frequency: 5600 MHz; Duty Cycle: 1:1

Medium parameters used:  $f = 5600$  MHz;  $\sigma = 5.102$  S/m;  $\epsilon_r = 35.153$ ;  $\rho = 1000$  kg/m<sup>3</sup>

Phantom section: Flat Section

Ambient Temperature: 22.4°C Liquid Temperature: 21.2°C

DASY5 Configuration:

- Probe: EX3DV4 - SN7893; ConvF(4.91,4.91,4.91); Calibrated: 2024.09.05;
- Sensor-Surface: 2mm (Mechanical Surface Detection)
- Electronics: DAE4 Sn1711; Calibrated: 2024.03.18
- Phantom: SAM1; Type: QD000P40CD; Serial: TP:1576
- Measurement SW: DASY52, Version 52.8 (8); SEMCAD X Version 14.6.10 (7331)

**CW 5600/Area Scan (101x101x1):** Interpolated grid: dx=1.000 mm, dy=1.000 mm

Maximum value of SAR (interpolated) = 16.6 W/kg

**CW 5600/Zoom Scan (7x7x12)/Cube 0:** Measurement grid: dx=4mm, dy=4mm, dz=2mm

Reference Value = 39.30 V/m; Power Drift = 0.08 dB

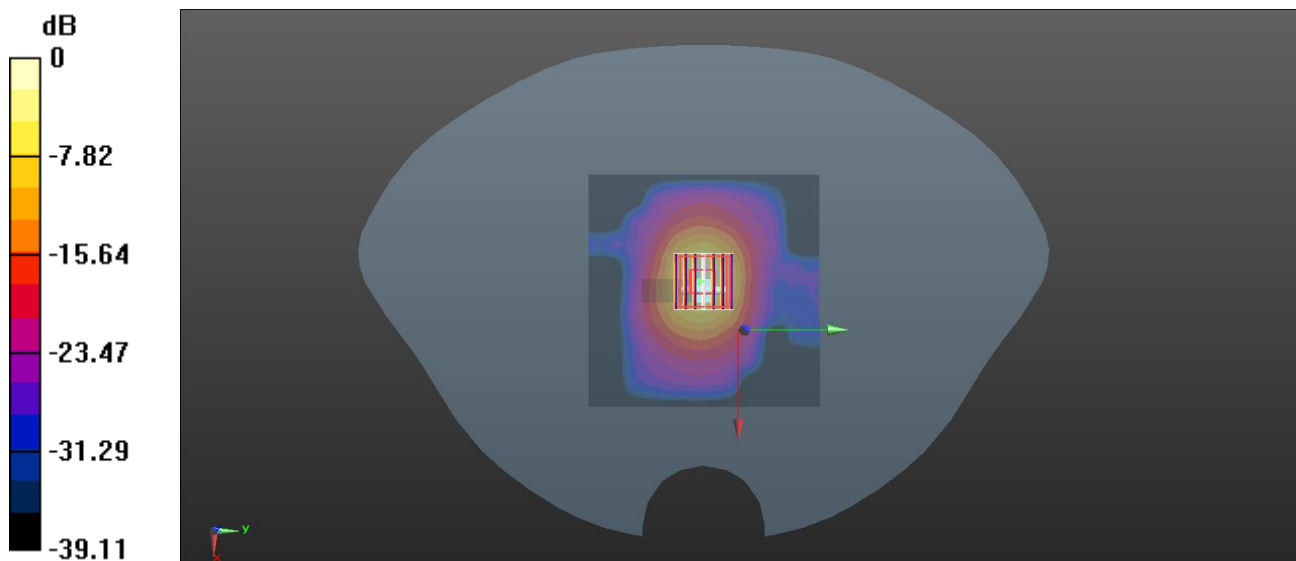
Peak SAR (extrapolated) = 34.6 W/kg

**SAR(1 g) = 8.41 W/kg; SAR(10 g) = 2.38 W/kg**

Smallest distance from peaks to all points 3 dB below = 7.4 mm

Ratio of SAR at M2 to SAR at M1 = 54.5%

Maximum value of SAR (measured) = 17.5 W/kg



0 dB = 17.5 W/kg

# System Performance Check Data (5750MHz)

Date: 2025.02.04

Communication System Band: D5GHz (5000.0 - 6000.0 MHz); Frequency: 5750 MHz; Duty Cycle: 1:1

Medium parameters used:  $f = 5750$  MHz;  $\sigma = 5.171$  S/m;  $\epsilon_r = 35.751$ ;  $\rho = 1000$  kg/m<sup>3</sup>

Phantom section: Flat Section

Ambient Temperature: 22.3°C Liquid Temperature: 21.3°C

DASY5 Configuration:

- Probe: EX3DV4 - SN7893; ConvF(4.98, 4.98, 4.98); Calibrated: 2024.09.05;
- Sensor-Surface: 2mm (Mechanical Surface Detection)
- Electronics: DAE4 Sn1711; Calibrated: 2024.03.18
- Phantom: SAM1; Type: QD000P40CD; Serial: TP:1576
- Measurement SW: DASY52, Version 52.8 (8); SEMCAD X Version 14.6.10 (7331)

**CW 5750/Area Scan (101x101x1):** Interpolated grid: dx=1.000 mm, dy=1.000 mm

Maximum value of SAR (interpolated) = 14.7 W/kg

**CW 5750/Zoom Scan (7x7x12)/Cube 0:** Measurement grid: dx=4mm, dy=4mm, dz=2mm

Reference Value = 35.68 V/m; Power Drift = 0.04 dB

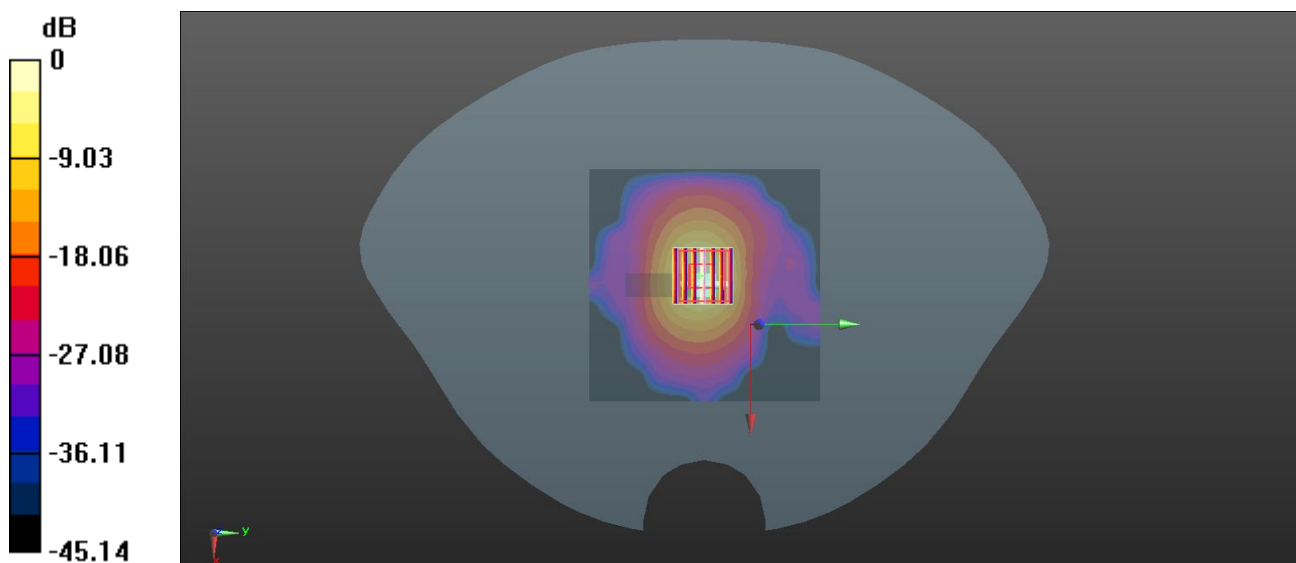
Peak SAR (extrapolated) = 32.3 W/kg

**SAR(1 g) = 7.53 W/kg; SAR(10 g) = 2.11 W/kg**

Smallest distance from peaks to all points 3 dB below = 7.2 mm

Ratio of SAR at M2 to SAR at M1 = 53.3%

Maximum value of SAR (measured) = 15.8 W/kg



0 dB = 15.8 W/kg

## ANNEX C TEST DATA

Meas.1 Body Plane with Front Edge 10mm on 39 Channel in Bluetooth mode with Antenna 1

Date: 2025.02.01

Communication System Band: 1; Frequency: 2441 MHz; Duty Cycle: 1:1.29

Medium parameters used (interpolated):  $f = 2441$  MHz;  $\sigma = 1.786$  S/m;  $\epsilon_r = 39.115$ ;  $\rho = 1000$  kg/m<sup>3</sup>

Phantom section: Flat Section

Ambient Temperature: 22.3°C Liquid Temperature: 21.1°C

DASY5 Configuration:

- Probe: EX3DV4 - SN7893; ConvF(6.98, 6.98, 6.98); Calibrated: 2024.09.05;
- Sensor-Surface: 4mm (Mechanical Surface Detection)
- Electronics: DAE4 Sn1711; Calibrated: 2024.03.18
- Phantom: SAM1; Type: QD000P40CD; Serial: TP:1576
- Measurement SW: DASY52, Version 52.8 (8); SEMCAD X Version 14.6.10 (7331)

**Ch39/Area Scan (61x111x1):** Interpolated grid: dx=1.200 mm, dy=1.200 mm

Maximum value of SAR (interpolated) = 0.345 W/kg

**Ch39/Zoom Scan (7x7x7)/Cube 0:** Measurement grid: dx=5mm, dy=5mm, dz=5mm

Reference Value = 0 V/m; Power Drift = 0.00 dB

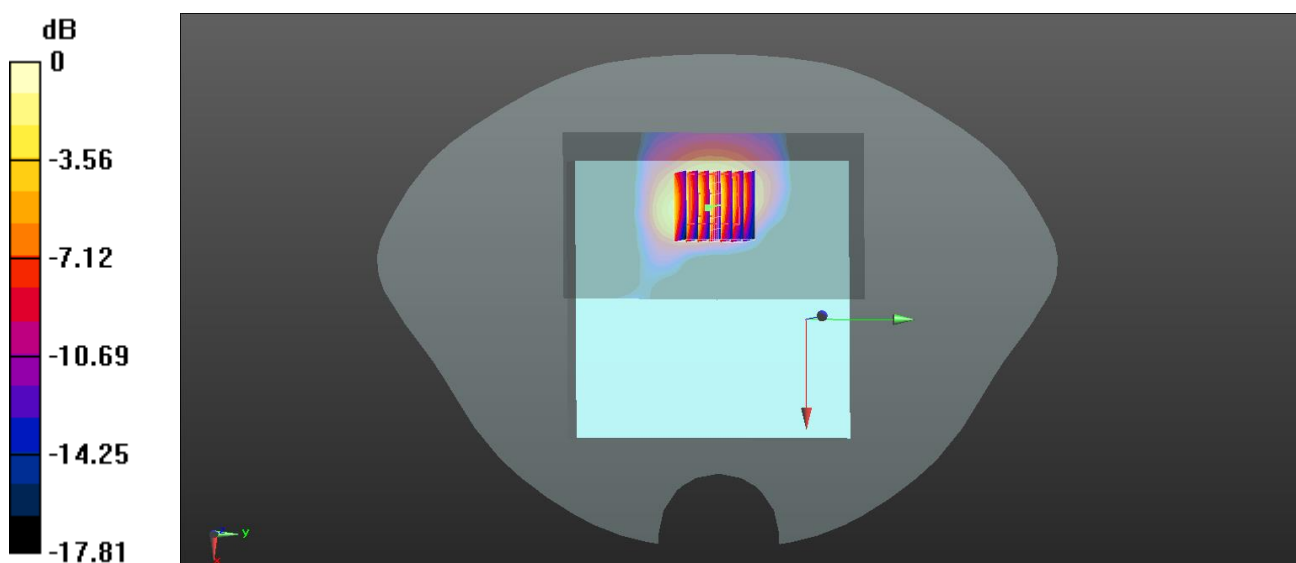
Peak SAR (extrapolated) = 0.386 W/kg

**SAR(1 g) = 0.238 W/kg; SAR(10 g) = 0.128 W/kg**

Smallest distance from peaks to all points 3 dB below = 9.1 mm

Ratio of SAR at M2 to SAR at M1 = 63.7%.

Maximum value of SAR (measured) = 0.324 W/kg



0 dB = 0.324 W/kg

Meas.2 Body Plane with Bottom Edge on 39 Channel in Bluetooth mode with Antenna 1

Date: 2025.02.01

Communication System Band: 1; Frequency: 2441 MHz; Duty Cycle: 1:1.29

Medium parameters used (interpolated):  $f = 2441$  MHz;  $\sigma = 1.786$  S/m;  $\epsilon_r = 39.115$ ;  $\rho = 1000$  kg/m<sup>3</sup>

Phantom section: Flat Section

Ambient Temperature: 22.3°C Liquid Temperature: 21.1°C

DASY5 Configuration:

- Probe: EX3DV4 - SN7893; ConvF(6.98, 6.98, 6.98); Calibrated: 2024.09.05;
- Sensor-Surface: 4mm (Mechanical Surface Detection)
- Electronics: DAE4 Sn1711; Calibrated: 2024.03.18
- Phantom: SAM1; Type: QD000P40CD; Serial: TP:1576
- Measurement SW: DASY52, Version 52.8 (8); SEMCAD X Version 14.6.10 (7331)

**Ch39/Area Scan (51x131x1):** Interpolated grid: dx=1.200 mm, dy=1.200 mm

Maximum value of SAR (interpolated) = 0.323 W/kg

**Ch39/Zoom Scan (7x7x7)/Cube 0:** Measurement grid: dx=5mm, dy=5mm, dz=5mm

Reference Value = 1.162 V/m; Power Drift = 0.07 dB

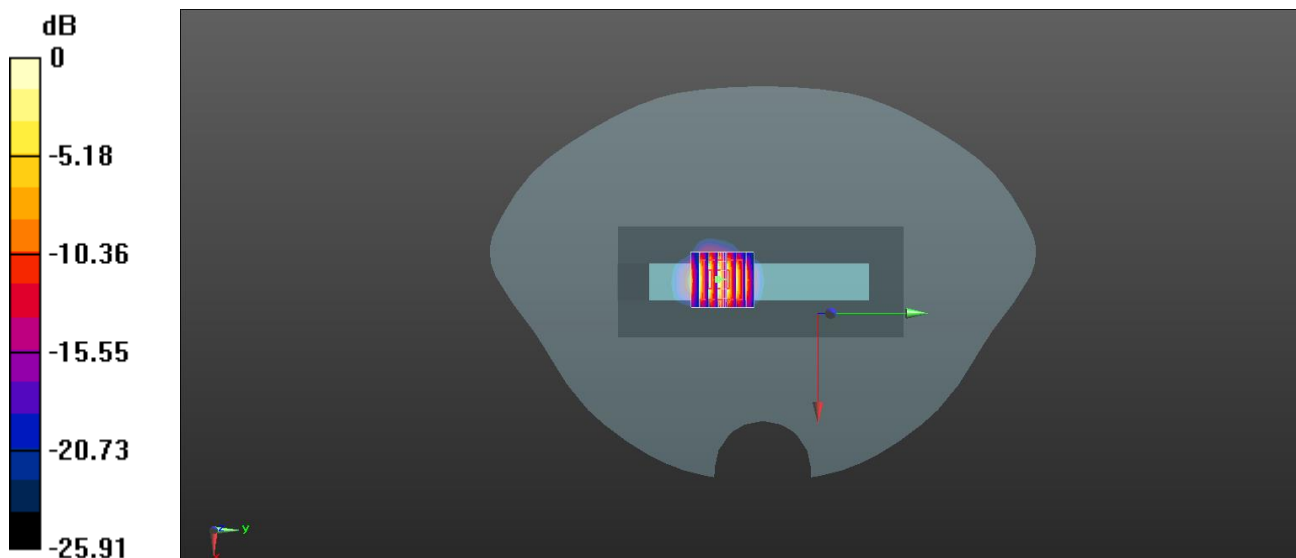
Peak SAR (extrapolated) = 0.345 W/kg

**SAR(1 g) = 0.142 W/kg; SAR(10 g) = 0.052 W/kg**

Smallest distance from peaks to all points 3 dB below = 7 mm

Ratio of SAR at M2 to SAR at M1 = 47%

Maximum value of SAR (measured) = 0.175 W/kg



0 dB = 0.175 W/kg

Meas.3 Body Plane with Front Edge 10mm on 6 Channel in IEEE802.11b mode with Antenna

Date: 2025.02.01

Communication System Band: WIFI2.4; Frequency: 2437 MHz; Duty Cycle: 1:1.06

Medium parameters used (interpolated):  $f = 2437$  MHz;  $\sigma = 1.767$  S/m;  $\epsilon_r = 39.867$ ;  $\rho = 1000$  kg/m<sup>3</sup>

Phantom section: Flat Section

Ambient Temperature: 22.3°C Liquid Temperature: 21.1°C

DASY5 Configuration:

- Probe: EX3DV4 - SN7893; ConvF(6.98, 6.98, 6.98); Calibrated: 2024.09.05;
- Sensor-Surface: 4mm (Mechanical Surface Detection)
- Electronics: DAE4 Sn1711; Calibrated: 2024.03.18
- Phantom: SAM1; Type: QD000P40CD; Serial: TP:1576
- Measurement SW: DASY52, Version 52.8 (8); SEMCAD X Version 14.6.10 (7331)

**Ch6/Area Scan (61x111x1):** Interpolated grid: dx=1.200 mm, dy=1.200 mm

Maximum value of SAR (interpolated) = 0.447 W/kg

**Ch6/Zoom Scan (7x7x7)/Cube 0:** Measurement grid: dx=5mm, dy=5mm, dz=5mm

Reference Value = 0 V/m; Power Drift = 0.00 dB

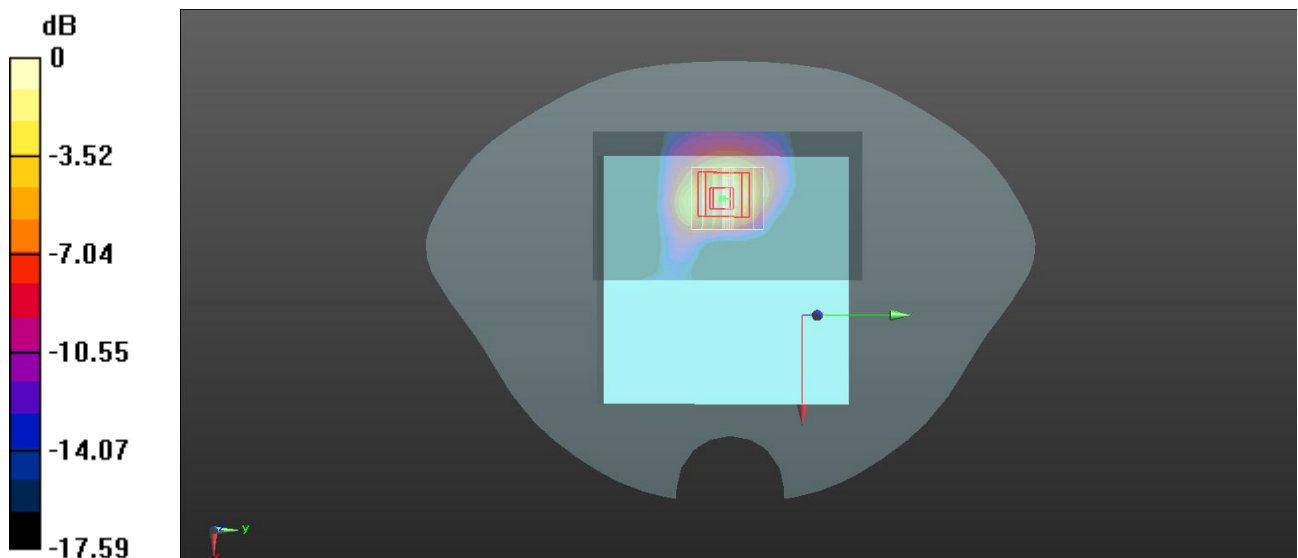
Peak SAR (extrapolated) = 0.507 W/kg

**SAR(1 g) = 0.304 W/kg; SAR(10 g) = 0.159 W/kg**

Smallest distance from peaks to all points 3 dB below = 8.9 mm

Ratio of SAR at M2 to SAR at M1 = 63.3%

Maximum value of SAR (measured) = 0.420 W/kg



0 dB = 0.420 W/kg

Meas.4 Body Plane with Bottom Edge on 6 Channel in IEEE802.11b mode with Antenna 1

Date: 2025.02.01

Communication System Band: WIFI2.4; Frequency: 2437 MHz; Duty Cycle: 1:1.06

Medium parameters used (interpolated):  $f = 2437$  MHz;  $\sigma = 1.767$  S/m;  $\epsilon_r = 39.867$ ;  $\rho = 1000$  kg/m<sup>3</sup>

Phantom section: Flat Section

Ambient Temperature: 22.3°C Liquid Temperature: 21.1°C

DASY5 Configuration:

- Probe: EX3DV4 - SN7893; ConvF(6.98, 6.98, 6.98); Calibrated: 2024.09.05;
- Sensor-Surface: 4mm (Mechanical Surface Detection)
- Electronics: DAE4 Sn1711; Calibrated: 2024.03.18
- Phantom: SAM1; Type: QD000P40CD; Serial: TP:1576
- Measurement SW: DASY52, Version 52.8 (8); SEMCAD X Version 14.6.10 (7331)

**Ch6/Area Scan (51x131x1):** Interpolated grid: dx=1.200 mm, dy=1.200 mm

Maximum value of SAR (interpolated) = 0.125 W/kg

**Ch6/Zoom Scan (7x7x7)/Cube 0:** Measurement grid: dx=5mm, dy=5mm, dz=5mm

Reference Value = 0.3580 V/m; Power Drift = 0.09 dB

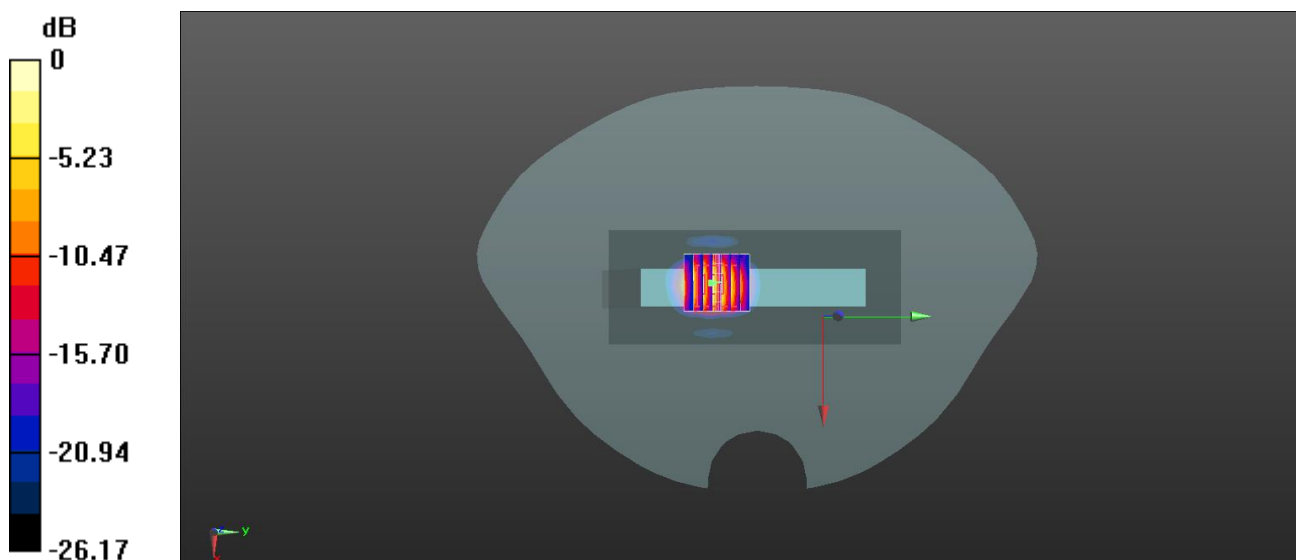
Peak SAR (extrapolated) = 0.321 W/kg

**SAR(1 g) = 0.130 W/kg; SAR(10 g) = 0.047 W/kg**

Smallest distance from peaks to all points 3 dB below = 7 mm

Ratio of SAR at M2 to SAR at M1 = 46.3%

Maximum value of SAR (measured) = 0.160 W/kg



0 dB = 0.160 W/kg

Meas.5 Body Plane with Front Edge 10mm on 64 Channel in IEEE802.11a mode with Antenna 1

Date: 2025.02.02

Communication System Band: 5.3G; Frequency: 5320 MHz; Duty Cycle: 1:1.065

Medium parameters used (interpolated):  $f = 5320$  MHz;  $\sigma = 4.863$  S/m;  $\epsilon_r = 35.128$ ;  $\rho = 1000$  kg/m<sup>3</sup>

Phantom section: Flat Section

Ambient Temperature: 22.5°C Liquid Temperature: 21.4°C

DASY5 Configuration:

- Probe: EX3DV4 - SN7893; ConvF(5.44, 5.44, 5.44); Calibrated: 2024.09.05;
- Sensor-Surface: 2mm (Mechanical Surface Detection)
- Electronics: DAE4 Sn1711; Calibrated: 2024.03.18
- Phantom: SAM1; Type: QD000P40CD; Serial: TP:1576
- Measurement SW: DASY52, Version 52.8 (8); SEMCAD X Version 14.6.10 (7331)

**Ch64/Area Scan (81x161x1):** Interpolated grid: dx=1.000 mm, dy=1.000 mm

Maximum value of SAR (interpolated) = 0.347 W/kg

**Ch64/Zoom Scan (7x7x12)/Cube 0:** Measurement grid: dx=4mm, dy=4mm, dz=2mm

Reference Value = 0 V/m; Power Drift = 0.00 dB

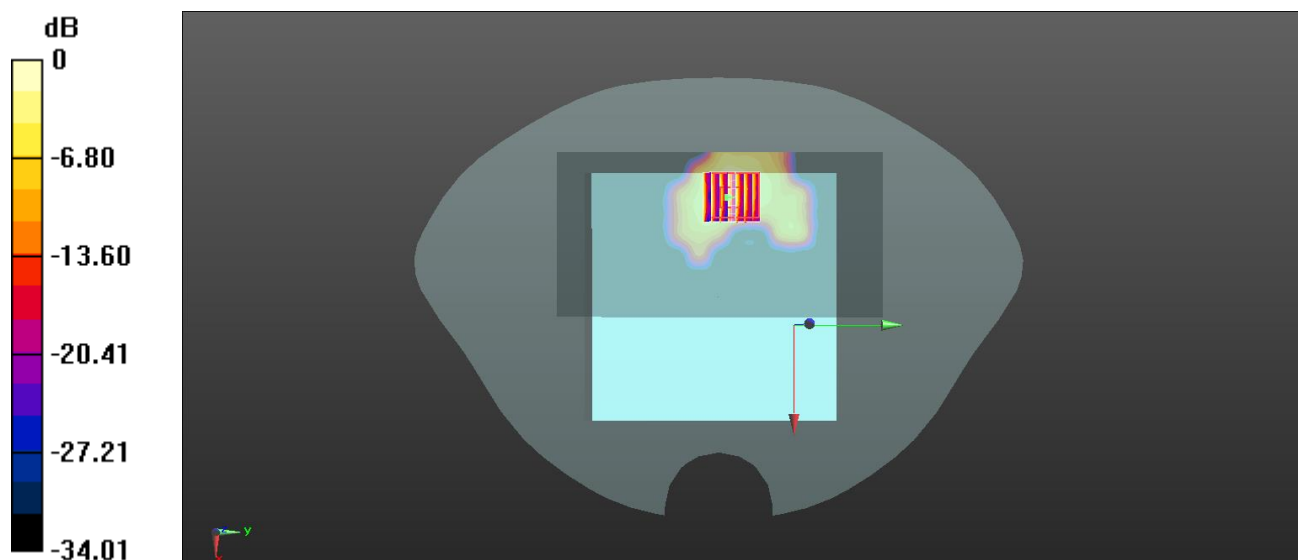
Peak SAR (extrapolated) = 0.716 W/kg

**SAR(1 g) = 0.184 W/kg; SAR(10 g) = 0.062 W/kg**

Smallest distance from peaks to all points 3 dB below = 7.2 mm

Ratio of SAR at M2 to SAR at M1 = 55.6%

Maximum value of SAR (measured) = 0.351 W/kg



0 dB = 0.351 W/kg

Meas.6 Body Plane with Front Edge 10mm on 140 Channel in IEEE802.11a mode with Antenna 1

Date: 2025.02.03

Communication System Band: 5.6G; Frequency: 5700 MHz; Duty Cycle: 1:1.065

Medium parameters used:  $f = 5700$  MHz;  $\sigma = 5.146$  S/m;  $\epsilon_r = 34.103$ ;  $\rho = 1000$  kg/m<sup>3</sup>

Phantom section: Flat Section

Ambient Temperature: 22.4°C Liquid Temperature: 21.2°C

DASY5 Configuration:

- Probe: EX3DV4 - SN7893; ConvF(4.91,4.91,4.91); Calibrated: 2024.09.05;
- Sensor-Surface: 2mm (Mechanical Surface Detection)
- Electronics: DAE4 Sn1711; Calibrated: 2024.03.18
- Phantom: SAM1; Type: QD000P40CD; Serial: TP:1576
- Measurement SW: DASY52, Version 52.8 (8); SEMCAD X Version 14.6.10 (7331)

**Ch140/Area Scan (81x161x1):** Interpolated grid: dx=1.000 mm, dy=1.000 mm

Maximum value of SAR (interpolated) = 0.665 W/kg

**Ch140/Zoom Scan (7x7x12)/Cube 0:** Measurement grid: dx=4mm, dy=4mm, dz=2mm

Reference Value = 0 V/m; Power Drift = 0.09 dB

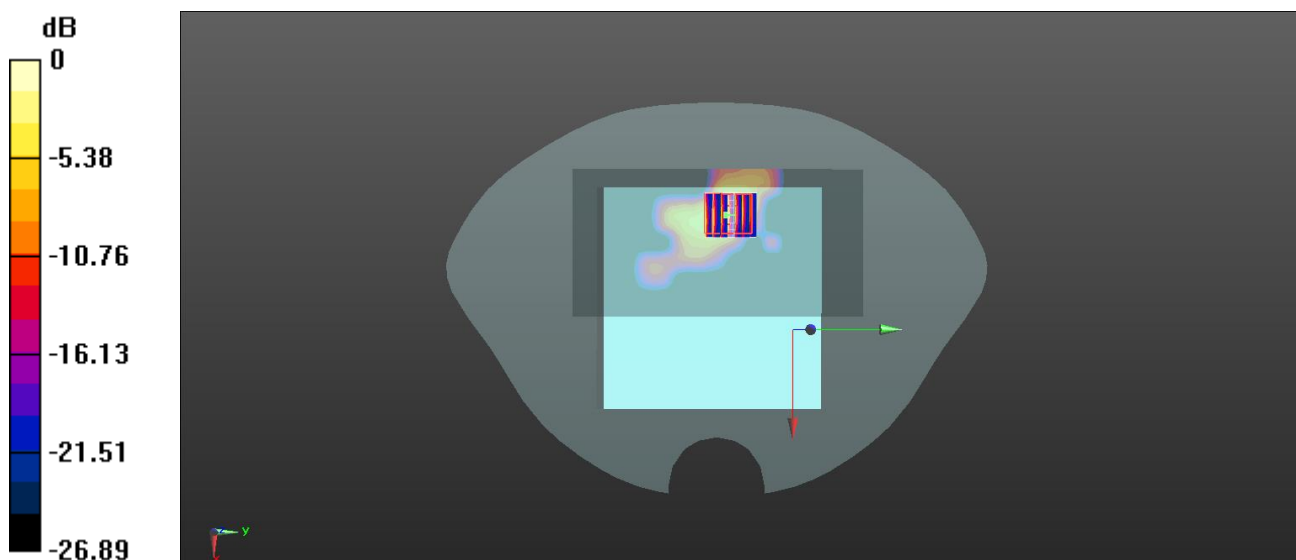
Peak SAR (extrapolated) = 1.27 W/kg

**SAR(1 g) = 0.300 W/kg; SAR(10 g) = 0.093 W/kg**

Smallest distance from peaks to all points 3 dB below = 7.2 mm

Ratio of SAR at M2 to SAR at M1 = 52.9%

Maximum value of SAR (measured) = 0.600 W/kg



0 dB = 0.600 W/kg



Meas.7 Body Plane with Front Edge 10mm on 149 Channel in IEEE802.11a mode with Antenna 1

Date: 2025.02.04

Communication System Band: 5.8G; Frequency: 5745 MHz; Duty Cycle: 1:1.065

Medium parameters used (interpolated):  $f = 5745$  MHz;  $\sigma = 5.134$  S/m;  $\epsilon_r = 36.143$ ;  $\rho = 1000$  kg/m<sup>3</sup>

Phantom section: Flat Section

Ambient Temperature: 22.3°C Liquid Temperature: 21.3°C

DASY5 Configuration:

- Probe: EX3DV4 - SN7893; ConvF(4.98, 4.98, 4.98); Calibrated: 2024.09.05;
- Sensor-Surface: 2mm (Mechanical Surface Detection)
- Electronics: DAE4 Sn1711; Calibrated: 2024.03.18
- Phantom: SAM1; Type: QD000P40CD; Serial: TP:1576
- Measurement SW: DASY52, Version 52.8 (8); SEMCAD X Version 14.6.10 (7331)

**Ch149/Area Scan (81x161x1):** Interpolated grid: dx=1.000 mm, dy=1.000 mm

Maximum value of SAR (interpolated) = 1.20 W/kg

**Ch149/Zoom Scan (7x7x12)/Cube 0:** Measurement grid: dx=4mm, dy=4mm, dz=2mm

Reference Value = 0 V/m; Power Drift = 0.01 dB

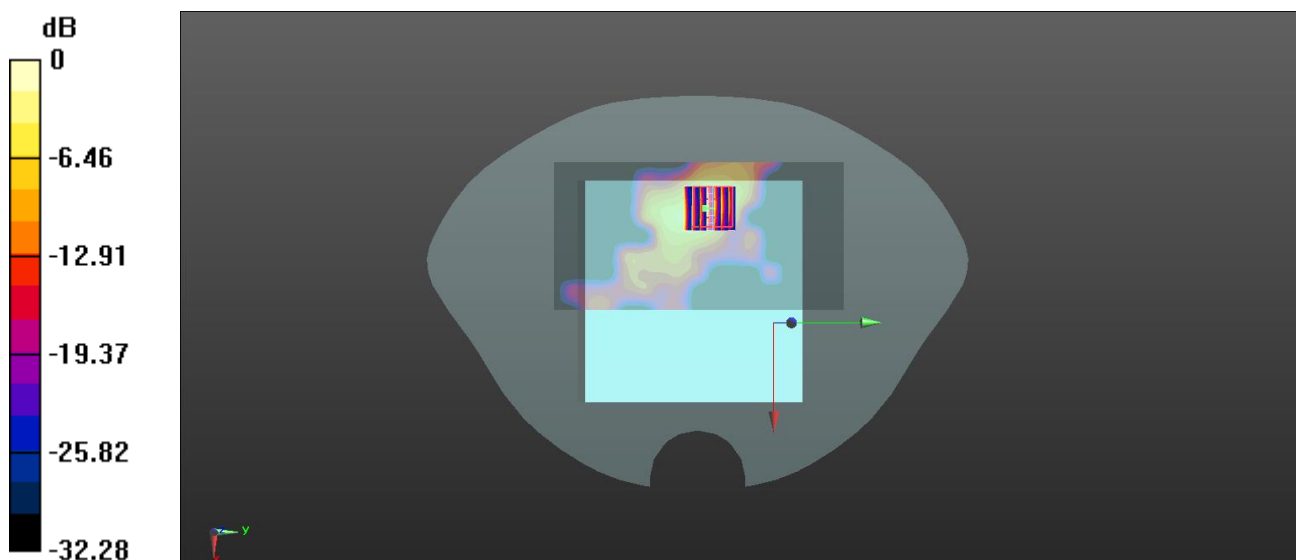
Peak SAR (extrapolated) = 2.56 W/kg

**SAR(1 g) = 0.387 W/kg; SAR(10 g) = 0.184 W/kg**

Smallest distance from peaks to all points 3 dB below = 7.2 mm

Ratio of SAR at M2 to SAR at M1 = 51.8%

Maximum value of SAR (measured) = 1.19 W/kg



0 dB = 1.19 W/kg

Meas.8 Body Plane with Bottom Edge on 64 Channel in IEEE802.11a mode with Antenna 1

Date: 2025.02.02

Communication System Band: 5.3G; Frequency: 5320 MHz; Duty Cycle: 1:1.065

Medium parameters used (interpolated):  $f = 5320$  MHz;  $\sigma = 4.863$  S/m;  $\epsilon_r = 35.128$ ;  $\rho = 1000$  kg/m<sup>3</sup>

Phantom section: Flat Section

Ambient Temperature: 22.5°C Liquid Temperature: 21.4°C

DASY5 Configuration:

- Probe: EX3DV4 - SN7893; ConvF(5.44, 5.44, 5.44); Calibrated: 2024.09.05;
- Sensor-Surface: 2mm (Mechanical Surface Detection)
- Electronics: DAE4 Sn1711; Calibrated: 2024.03.18
- Phantom: SAM1; Type: QD000P40CD; Serial: TP:1576
- Measurement SW: DASY52, Version 52.8 (8); SEMCAD X Version 14.6.10 (7331)

**Ch64/Area Scan (81x171x1):** Interpolated grid: dx=1.000 mm, dy=1.000 mm

Maximum value of SAR (interpolated) = 0.579 W/kg

**Ch64/Zoom Scan (7x7x12)/Cube 0:** Measurement grid: dx=4mm, dy=4mm, dz=2mm

Reference Value = 0.6090 V/m; Power Drift = 0.03 dB

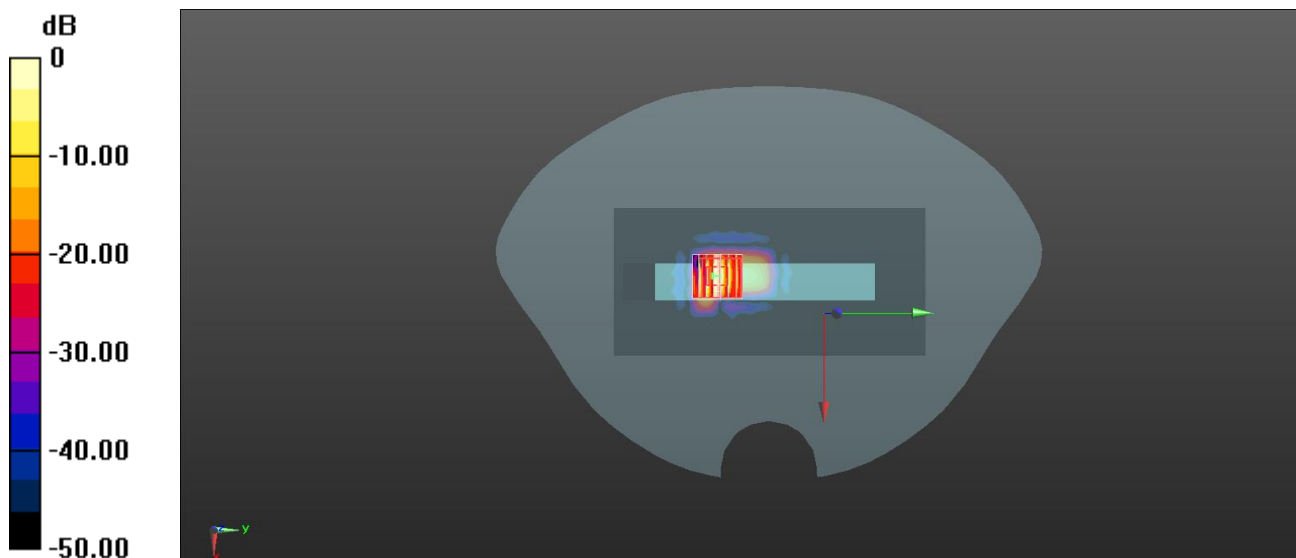
Peak SAR (extrapolated) = 1.19 W/kg

**SAR(1 g) = 0.225 W/kg; SAR(10 g) = 0.044 W/kg**

Smallest distance from peaks to all points 3 dB below = 5.1 mm

Ratio of SAR at M2 to SAR at M1 = 55.6%

Maximum value of SAR (measured) = 0.547 W/kg



0 dB = 0.547 W/kg

Meas.9 Body Plane with Bottom Edge on 140 Channel in IEEE802.11a mode with Antenna 1

Date: 2025.02.03

Communication System Band: 5.6G; Frequency: 5700 MHz; Duty Cycle: 1:1.065

Medium parameters used:  $f = 5700 \text{ MHz}$ ;  $\sigma = 5.146 \text{ S/m}$ ;  $\epsilon_r = 34.103$ ;  $\rho = 1000 \text{ kg/m}^3$

Phantom section: Flat Section

Ambient Temperature: 22.4°C Liquid Temperature: 21.2°C

DASY5 Configuration:

- Probe: EX3DV4 - SN7893; ConvF(4.91,4.91,4.91); Calibrated: 2024.09.05;
- Sensor-Surface: 2mm (Mechanical Surface Detection)
- Electronics: DAE4 Sn1711; Calibrated: 2024.03.18
- Phantom: SAM1; Type: QD000P40CD; Serial: TP:1576
- Measurement SW: DASY52, Version 52.8 (8); SEMCAD X Version 14.6.10 (7331)

**Ch140/Area Scan (61x161x1):** Interpolated grid:  $dx=1.000 \text{ mm}$ ,  $dy=1.000 \text{ mm}$

Maximum value of SAR (interpolated) = 0.380 W/kg

**Ch140/Zoom Scan (7x7x12)/Cube 0:** Measurement grid:  $dx=4\text{mm}$ ,  $dy=4\text{mm}$ ,  $dz=2\text{mm}$

Reference Value = 1.535 V/m; Power Drift = 0.05 dB

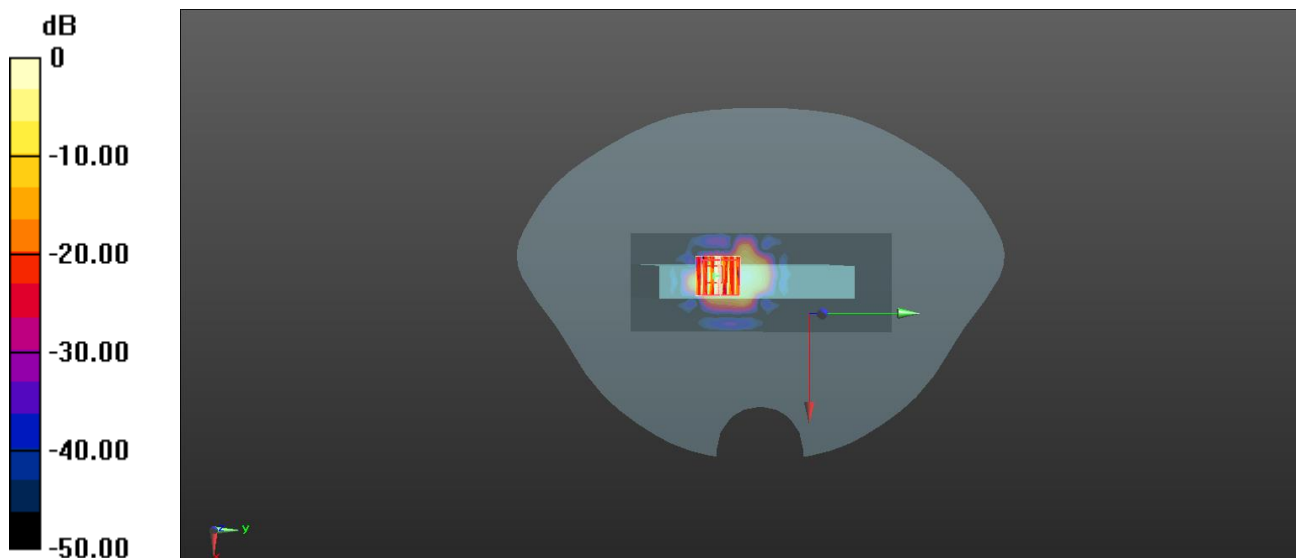
Peak SAR (extrapolated) = 2.10 W/kg

**SAR(1 g) = 0.175 W/kg; SAR(10 g) = 0.037 W/kg**

Smallest distance from peaks to all points 3 dB below = 4.3 mm

Ratio of SAR at M2 to SAR at M1 = 49.4%

Maximum value of SAR (measured) = 0.414 W/kg



0 dB = 0.414 W/kg

Meas.10 Body Plane with Bottom Edge on 149 Channel in IEEE802.11a mode with Antenna 1

Date: 2025.02.04

Communication System Band: 5.8G; Frequency: 5745 MHz; Duty Cycle: 1:1.065

Medium parameters used (interpolated):  $f = 5745$  MHz;  $\sigma = 5.134$  S/m;  $\epsilon_r = 36.143$ ;  $\rho = 1000$  kg/m<sup>3</sup>

Phantom section: Flat Section

Ambient Temperature: 22.3°C Liquid Temperature: 21.3°C

DASY5 Configuration:

- Probe: EX3DV4 - SN7893; ConvF(4.98, 4.98, 4.98); Calibrated: 2024.09.05;
- Sensor-Surface: 2mm (Mechanical Surface Detection)
- Electronics: DAE4 Sn1711; Calibrated: 2024.03.18
- Phantom: SAM1; Type: QD000P40CD; Serial: TP:1576
- Measurement SW: DASY52, Version 52.8 (8); SEMCAD X Version 14.6.10 (7331)

**Ch149/Area Scan (61x161x1):** Interpolated grid: dx=1.000 mm, dy=1.000 mm

Maximum value of SAR (interpolated) = 0.302 W/kg

**Ch149/Zoom Scan (7x7x12)/Cube 0:** Measurement grid: dx=4mm, dy=4mm, dz=2mm

Reference Value = 1.380 V/m; Power Drift = 0.03 dB

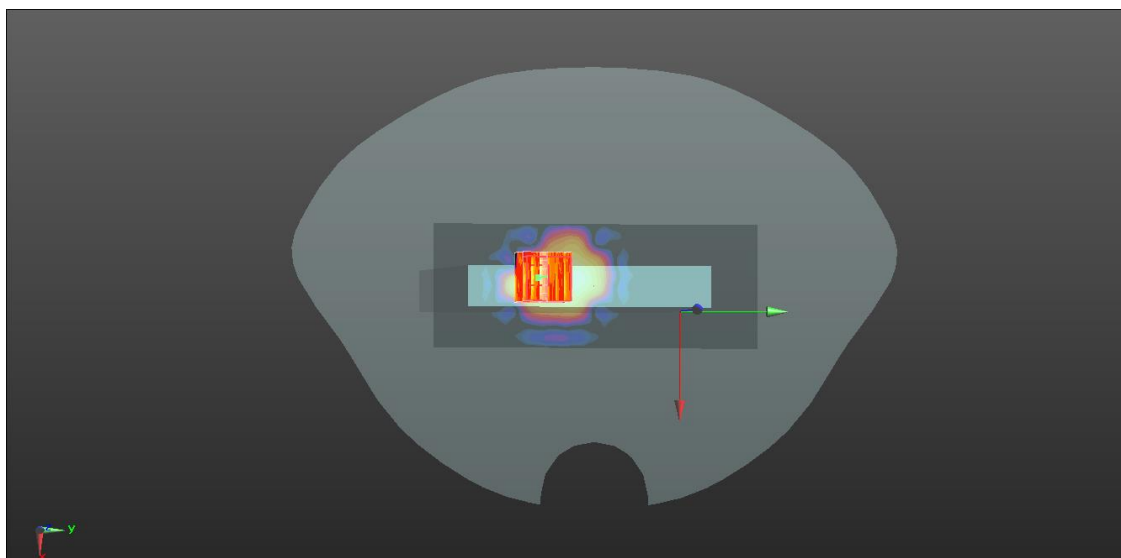
Peak SAR (extrapolated) = 0.661 W/kg

**SAR(1 g) = 0.133 W/kg; SAR(10 g) = 0.026 W/kg**

Smallest distance from peaks to all points 3 dB below = 4.5 mm

Ratio of SAR at M2 to SAR at M1 = 48.3%

Maximum value of SAR (measured) = 0.338 W/kg



0 dB = 0.338 W/kg

## **ANNEX D EUT EXTERNAL PHOTOS**

Please refer the document “BL-SZ24A0252-AW.pdf”.

## **ANNEX E SAR TEST SETUP PHOTOS**

Please refer the document “BL-SZ24A0252-AS.pdf”.

## **ANNEX F CALIBRATION REPORT**

Please refer the document “BL-SZ24A0252-AC.pdf”.

## **ANNEX G TUNE-UP PROCEDURE**

Please refer the document “BL-SZ24A0252-AT.pdf”.

## Statement

1. The laboratory guarantees the scientificity, accuracy and impartiality of the test, and is responsible for all the information in the report, except the information provided by the customer. The customer is responsible for the impact of the information provided on the validity of the results.
2. The report without China inspection body and laboratory Mandatory Approval (CMA) mark has no effect of proving to the society.
3. For the report with CNAS mark or A2LA mark, the items marked with "☆" are not within the accredited scope.
4. This report is invalid if it is altered, without the signature of the testing and approval personnel, or without the "inspection and testing dedicated stamp" or test report stamp.
5. The test data and results are only valid for the tested samples provided by the customer.
6. This report shall not be partially reproduced without the written permission of the laboratory.
7. Any objection shall be raised to the laboratory within 30 days after receiving the report.

--END OF REPORT--