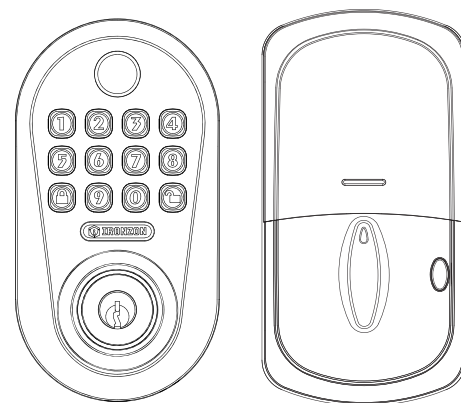


SMART DEADBOLT

Installation and User Guide

Required tools (not included)

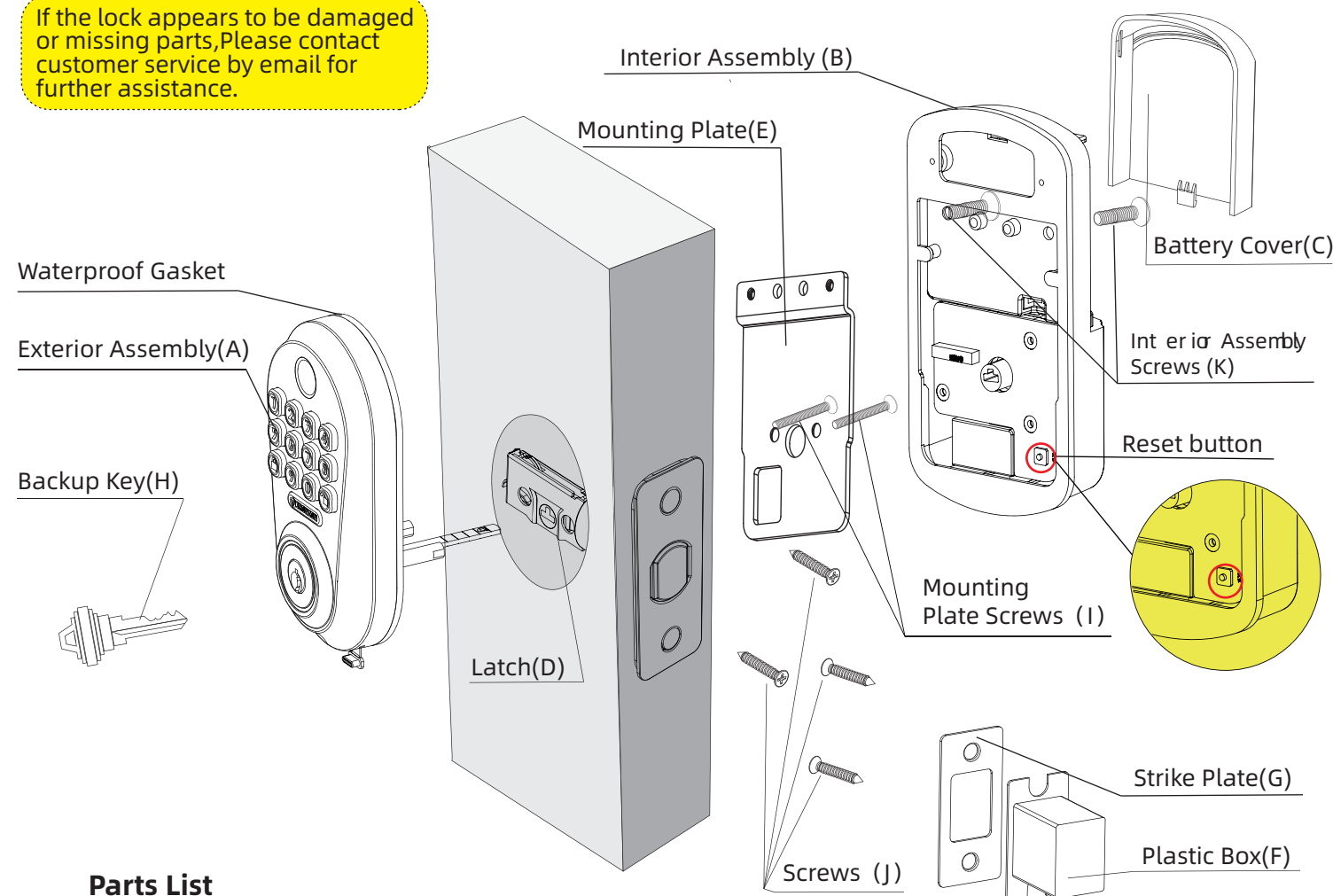
Ruler
Philips head screwdriver
Hammer
Chisel



What's in the box



If the lock appears to be damaged or missing parts, Please contact customer service by email for further assistance.



Parts List

A Exterior Assembly	B Interior Assembly	C Battery Cover	D Latch Bolt	E Mounting Plate
F Plastic box	G Strike Plate	H Backup Key	I Mounting Plate Screws	J Latch and Strike Screws
				K Interior Assembly Screws

Installation instructions

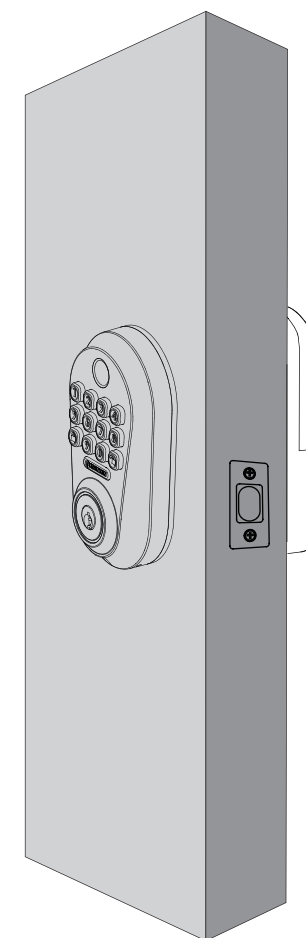
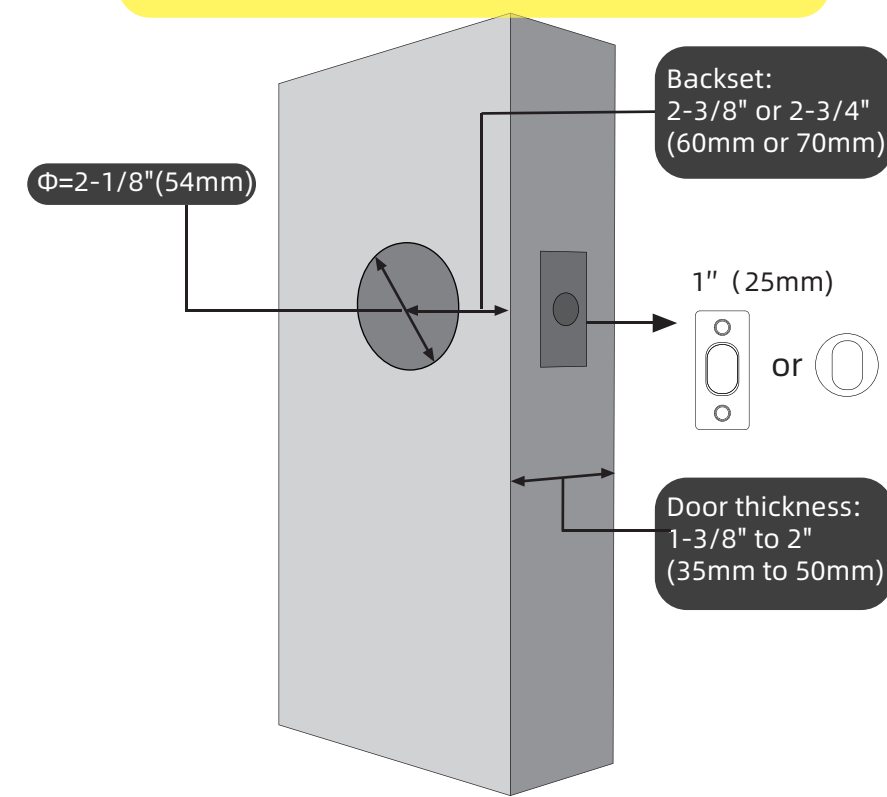


- 1 Don't insert the key to the cylinder when installing the deadbolt!!!
- 2 Battery:
 - a. Use new and **NON**-rechargeable 4 AA batteries for the best use.
 - b. Don't load batteries until the lock is completely installed.
- 3 Adjust latch to insert horizontally.

If you have any problems, don't hesitate to contact with us through customer service at the first time.



Before installing the lock, please check door jamb and door preparation.



Simple flowchart of installation



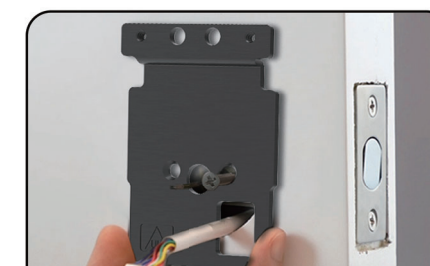
Please refer to the next section if you need a more detailed installation process.



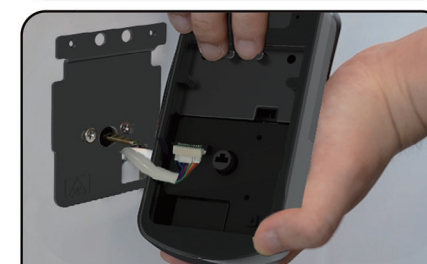
Step1 Install the bolt



Step2 Install the keypad



Step3 Install the backplate



Step4 Connect the cable



Step5 Install the back lock



Step6 Install the batteries cover

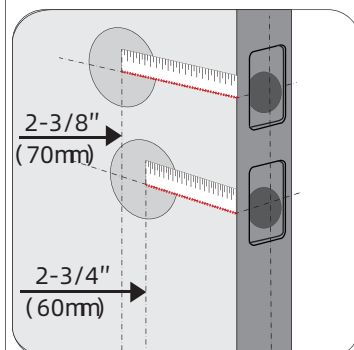
1.Remove existing deadbolt



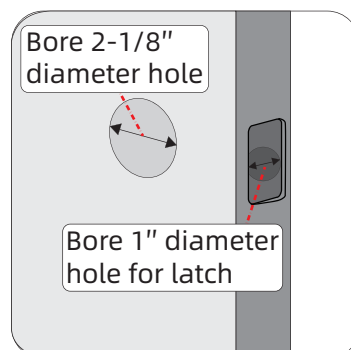
- ① Don't discard the old lock hardware until the lock has been successfully installed.
- ② Remove the lock from the door, including the old latch.

2.Prepare the door and check dimensions

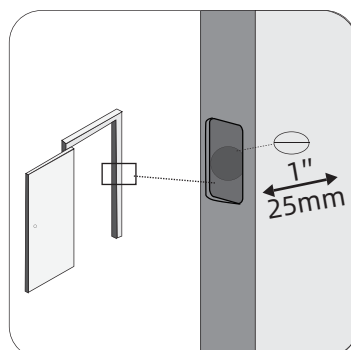
Measure length of the backset



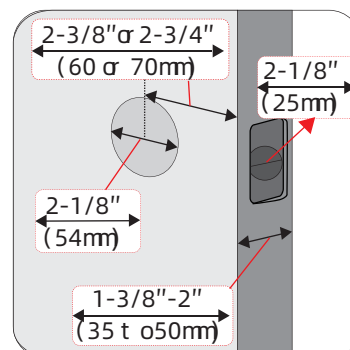
Measure diameter of the 2 holes



Measure depth of the door frame's hole

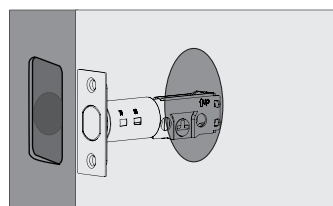


Confirm dimensions

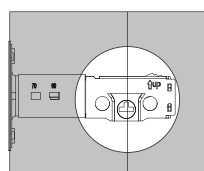


3.Install the latch and strike plate

A.Check backset and adjust the latch

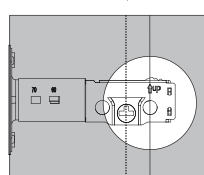


Hold the latch in front of the door hole, with the latch facing flush against the door edge. Check if the slotted door hole is centered or not.



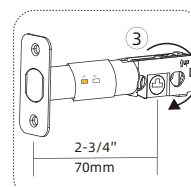
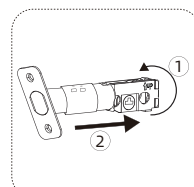
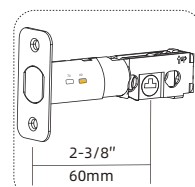
YES

No adjustment is required. Proceed to next step.

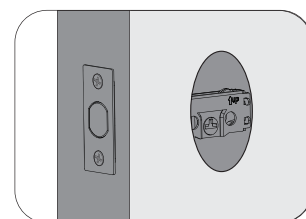
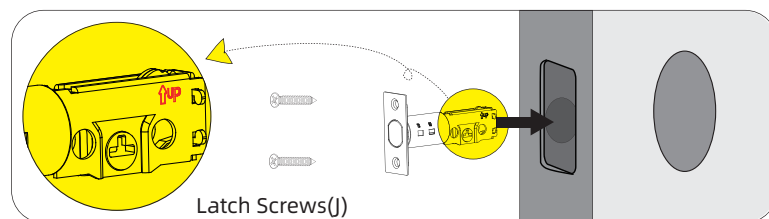


NO

Slotted hole is NOT centered. Rotate and pull the latch as shown to extend the latch. Proceed to next step.

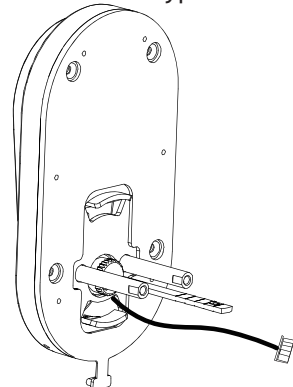


B. Install the latch



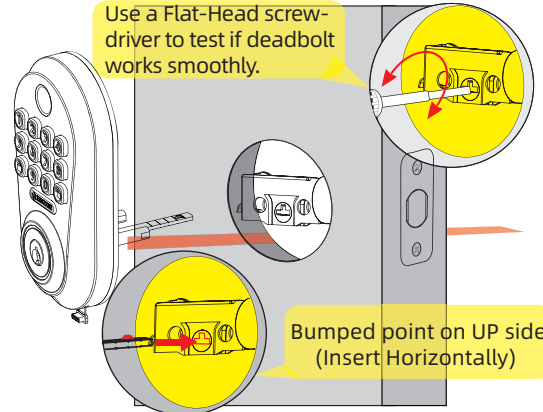
4.Install the exterior keypad and the interior assembly

Step for installing the exterior keypad

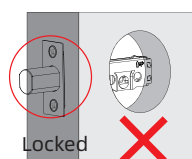
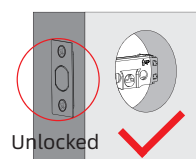


Install exterior keypad

Use a Flat-Head screw-driver to test if deadbolt works smoothly.



Keep the deadbolt unlocked

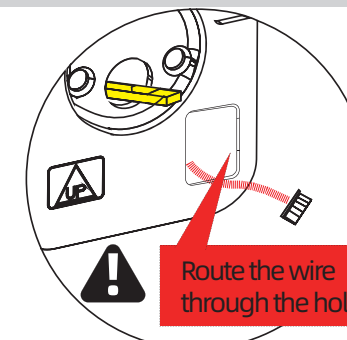
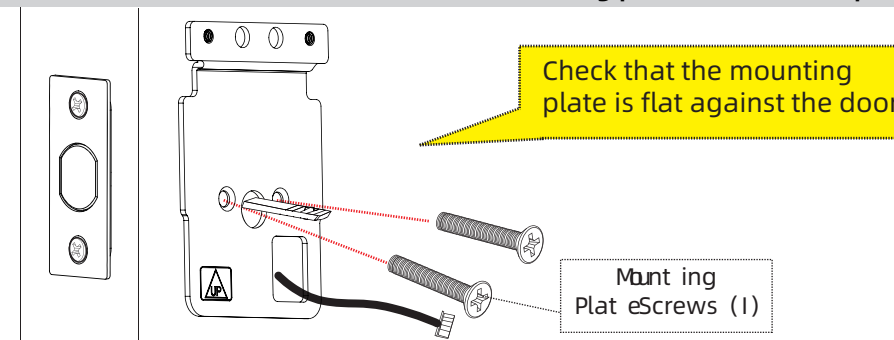


IMPORTANT:

Before installation, make sure the latch is in unlocking state.

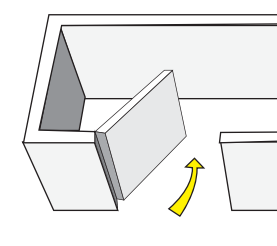
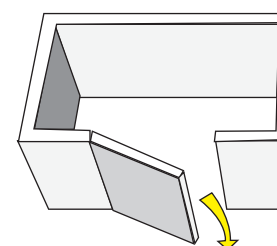
5.Install interior assembly

A.Mnting p late installation tips

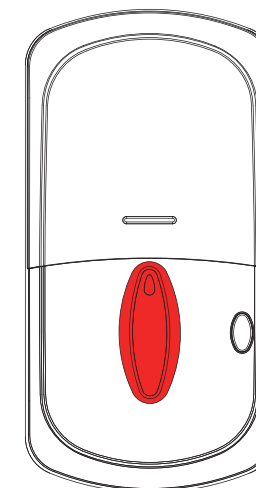
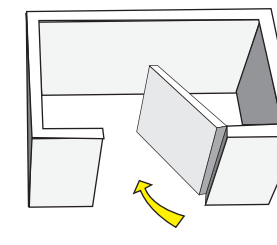
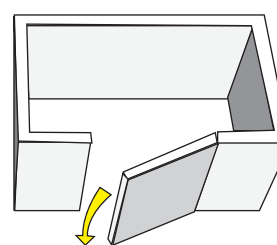


B.Determine left/right direction

Left opening direction:Hinge is on the LEFT



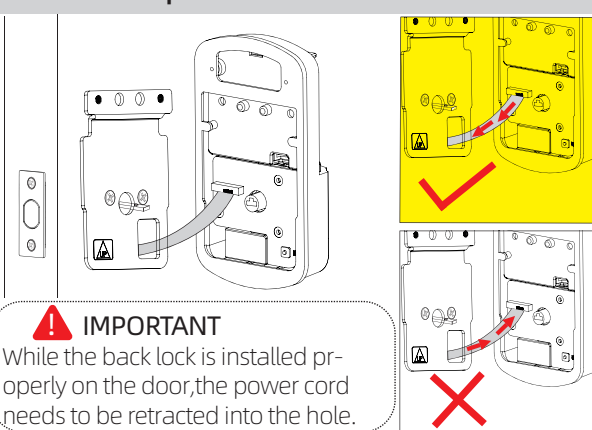
Right opening direction:Hinge is on the RIGHT



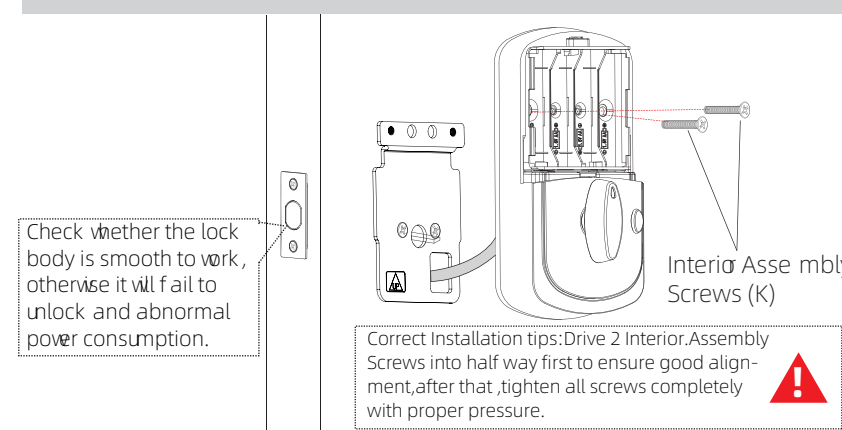
Adjust the rear lock knob to be vertical



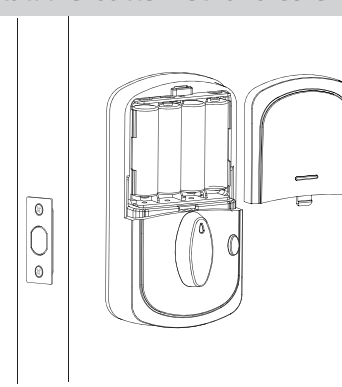
C.Insert IC port



D.Check installation status



E.Install the batteries and cover



F.Detect door's opening direction



Completely & properly install the door lock
--> Under unlocking state
--> Put on 4 AA batteries
--> Voice prompts programming successfully in 5s, and green light flashes as well
--> Door lock itself can detect the door's opening direction (L or R)
--> enter passcode to check if the deadbolt can extend/ retract correctly.

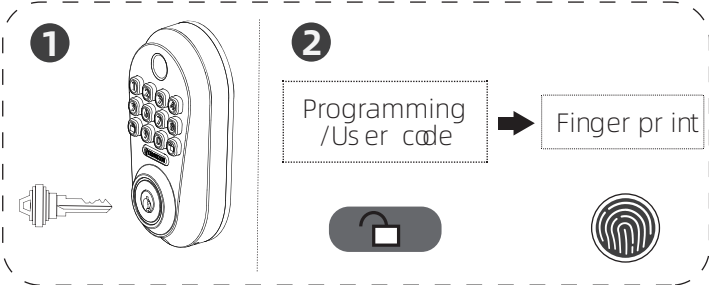
★ If you've created an administrator code already, please follow the step to detect the opening direction: +46# +Prgramming# +#, wait for 5s and it will automatically detect the opening direction.

Please wait for 5s for it to finish automatically being oriented before proceeding with setup operation after installation and power on.

PROGRAMMING INSTRUCTION

1.How to use?

•Unlock the door from outside



•Indicator light signals

- Blue Light:** During operating or programming
Green Light: Operating or programming successfully.
Red Light:
- An incorrect code was entered.
 - A programming error.
 - Low battery warning.

Tips:
Register (add) complete fingerprint area including up, down, left and right edges. Move finger slightly each time when programming to improve accuracy.

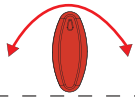


•Lock the door from outside

- Auto lock mode**
- Auto lock mode is disabled by default, please refer "Quick set" turn Auto-lock on steps.
 - In auto lock mode, the bolt will extend automatically in 5/10/20/30/60 seconds after unlocking.
- Manual mode**
- Press the " " button to close the lock

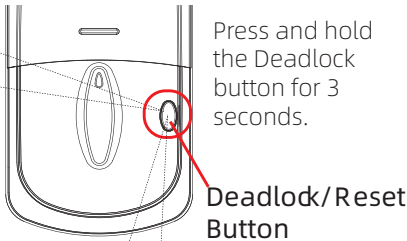
•Lock the door from inside

- Deadlock/Privacy button**
- Privacy mode is disabled by default.
 - All enter codes are disabled except the programming code.
- Manual mode**
- Press the turn piece to lock position



2.Privacy mode

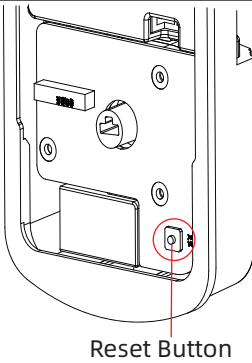
- Reset mode**
Step1. Remove the battery.
Step2. Re-put on the 4AA batteries, long press the "Deadlock button" until you hear the voice guiding.
Step 3: Press "1" to leave initialize, press "2" to confirm initialization and then you'll hear the voice guiding "operation successful"



- Deadlock Button**
After the Deadlock function is turned on, only the Programming Code can unlock, and all user code cannot unlock (use the Programming Code to unlock the lock will remove the Deadlock restriction).

3.Restore factory settings

- Delete all user codes, including master code:**
- Use a screwdriver to remove the interior assembly.
 - Long press the "reset button" until you hear the voice guiding: Press "1" to leave initialize, press "2" to confirm initialization and then you'll hear the voice guiding "operation successful".



- Warning:** After restore factory, Change the master passcode as soon as possible! Because of the master passcode can unlock the door.

4.Features

- Four ways for access: Fingerprint, passcode, key, App.
- Low power consumption, 4 AA batteries can work for 1 year or 5000 times.
- Backlit keypad for use in low light environments.
- 100pcs common user codes, 50pcs temporary codes and 50pcs fingerprints.
- Built-in disguise feature to protect your codes from prying eyes.
- Low battery warning with light-flashing indicator:
Battery under 30%, Orange light flashes after unlocking the door;
Battery under 20%, Red light flashes after unlocking the door, and you'll hear the voice guiding "Low battery, please replace promptly".

5.Setting definitions

Settings	Default Setting	Definitions
Programming Code	123456	<ul style="list-style-type: none">• It's required to change it to a code of your own before programming• In manual mode, press the " " button to lock.• 6~9 digits in length, must differ from all the user codes exists currently.• If you forget the master passcode, you can do initialization setting, which restores the default programming code.
Auto Lock	Disable	<ul style="list-style-type: none">• This feature is optional and can be turned off.• When enabled, the lock will automatically re-lock after 5/10/20/30/60 seconds.• After a successful code entry or manual unlock with the key, the lock will automatically re-lock after each unlock to keep your home security.
Manually Lock	Press the " " button	<ul style="list-style-type: none">• If auto-lock is not enabled, you need to do the locking manually.
Mute Mode	Disable	<ul style="list-style-type: none">• The voice guiding of lock & unlock as well as the beep sounds while pressing the keypad can be mute, but you can still hear the voice guiding while dosetting process.
Privacy Button	Disable	<ul style="list-style-type: none">• Privacy mode is disabled by default.• When enabled, activate Privacy mode by pressing the privacy button, for 3 seconds to put the lock in do-nd-disturb mode (All Entry Codes are disabled except the programming code).
Wrong Code Entry Limit	Enabled	<ul style="list-style-type: none">• Once the wrong code entry limit (10 attempts) has been met, the lock will shutdown (flashing RED) for sixty(60) seconds.
Peek-proof digital keypad	Enabled	<ul style="list-style-type: none">• Prevent code exposure strangers by entering random digits. Max in 16 digital length h. <div><div>123123456123</div><div>Password</div><div>Random digits</div></div>
User Code	Disable	<ul style="list-style-type: none">• The lock comes at with an y default User Codes.• Must be different from the master code and other user codes.• Up to 100 possible User Codes can be stored in the lock at one time

Warranty

Lifetime Limited Mechanical and Finish Warranty and 1-Year Limited Electronics Warranty Subject to the terms and conditions of the warranty, We extend a lifetime limited mechanical and finish warranty and a one-year limited electronics warranty to the original consumer user ("Original User") of our brand product against defects in material and workmanship, as long as the original User occupies the residential premises upon which the product was originally installed.

Warning



This manufacturer advises that no lock can provide complete security by itself this lock maybe defeated by forcible or technical means or evaded by entry elsewhere on the property, No lock can substitute for caution, awareness of your environment, and common sense. Builder's hardware is available in multiple performance grades to suit the application. In order to enhance security and reduce risk, you should consult a qualified technician or other security professional.

6.Troubleshooting

Question	Suggested Action
Motor turns but will not extend or retrieve the deadbolt.	1. Make sure the key is not in the lockset when installing the deadbolt .Refer to installation instructions. 2. Make sure the backset on the latch is set to the proper length. Refer to installation instructions. 3. Please restore to the factory setting and enter the default Master Code to set up the lock.
Why does my lock only work properly when the backup key is in? Why am I unable to pull the key out in the unlocked position?	1. You may need to re-install the whole lock. 2. Please do not p ut the backup key in the lock when install. 3. Please make sure when y ou start to install, the lock is in unlocked status. 4. Please make sure the thumb turn is horizontal.
Fail to programming the lock.	1. Before installation, restore the lock to complete the bolt direction setting. 2. Please make sure the lock is installed correctly. 3. Please install fresh batteries and make sure the cable is connected correctly.
The battery indicator keep s flashing.	1. The batteries are getting low. Please replace with 4 AA new batteries for the best p eformance(Alkaline batteries, do not use recharge batteries).
Keypad not responding.	1. Make sure the batteries are installed properly. 2. The battaries are getting low if the battery indicator keeps flashing. 3. Please replace with 4 new batteries for the best performance(Alkaline batteries, do not use recharge batteries). 4. Make sure the cable is well-connected to the port, and was not damaged during installation. 5. Make sure the lock has been set up and complete the bolt direction determination.
Forgot master code/Default programming code is incorrect.	1. Remove the battery. 2. Long press the deadlock button until you hear the beep sound after re-put back the batteries, and then you will hear the voiceguiding" To confirm initialization, press 2". 3. Press "1" to leave intialize , press "2" to confirm initialization and then you'll hear the voice guiding " operation successfull".
Lockset is not able to unlock/lock by keyp ad.	1. Make sure you have entered the correct User Code. 2. The battery is lowif the bat tery indicator light keep s flashing. Please ep lace it with 4 new batteries. 3. Make sure the cable is firmly connected. 4. Check the cable for any damage that may have occurred during installation. 5. Make sure the batteries are p op erly installed (Alkaline batteries, do not recharge batteries). 6. Check the strike p late to make sure it is p op erly aligned and clear so the bolt can freely move in the hole.

FCC Statement

This device complies with part 15 of the FCC Rules. Operation is subject to the following two conditions: (1) This device may not cause harmful interference, and (2) this device must accept any interference received, including interference that may cause undesired operation.

This equipment has been tested and found to comply with the limits for a Class B digital device, pursuant to part 15 of the FCC Rules. These limits are designed to provide reasonable protection against harmful interference in a residential installation. This equipment generates, uses and can radiate radio frequency energy and, if not installed and used in accordance with the instructions, may cause harmful interference to radio communications. However, there is no guarantee that interference will not occur in a particular installation. If this equipment does cause harmful interference to radio or television reception, which can be determined by turning the equipment off and on, the user is encouraged to try to correct the interference by one or more of the following measures:

- Reorient or relocate the receiving antenna.
- Increase the separation between the equipment and receiver.
- Connect the equipment into an outlet on a circuit different from that to which the receiver is connected.
- Consult the dealer or an experienced radio/TV technician for help.

Caution: Any changes or modifications to this device not explicitly approved by manufacturer could void your authority to operate this equipment.

RF Exposure Information

The device has been evaluated to meet general RF exposure requirement. The device can be used in portable exposure condition without restriction.

7.App Operation Guide

We recommend using app because it’s easier to set and more convenient for future use.

1. Create an Account

Android:Search smart Life on Google Play.

iOS : Search smart Life on the App store.

QR: Scan the QR code on the right to download Smart Life App.

Sign up and log into your account with an email address.

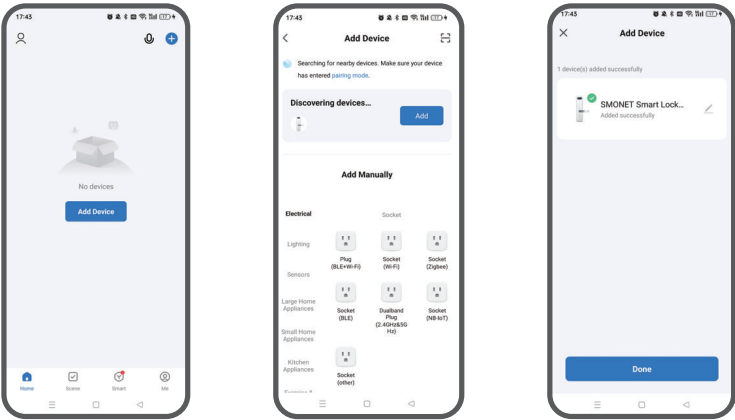


2. Pair Your Phone with the Smart Lock

Step 1:Press any key to wake up the lock, you will hear a voice prompt "Please add Bluetooth Administrator" .If not , please reset the lock. Tap Add Device.

Step 2: Add the lock discovered.

Step 3: Name the lock and Tap Done.

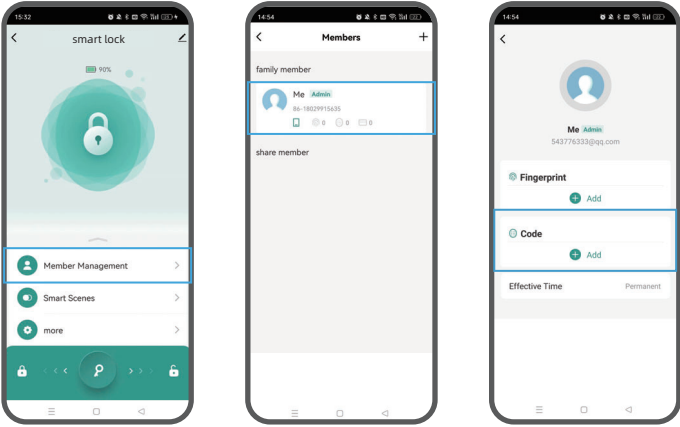


3.Change the Admin Passcode

Once the lock and your phone are paired, the default admin passcode 123456 is invalid.

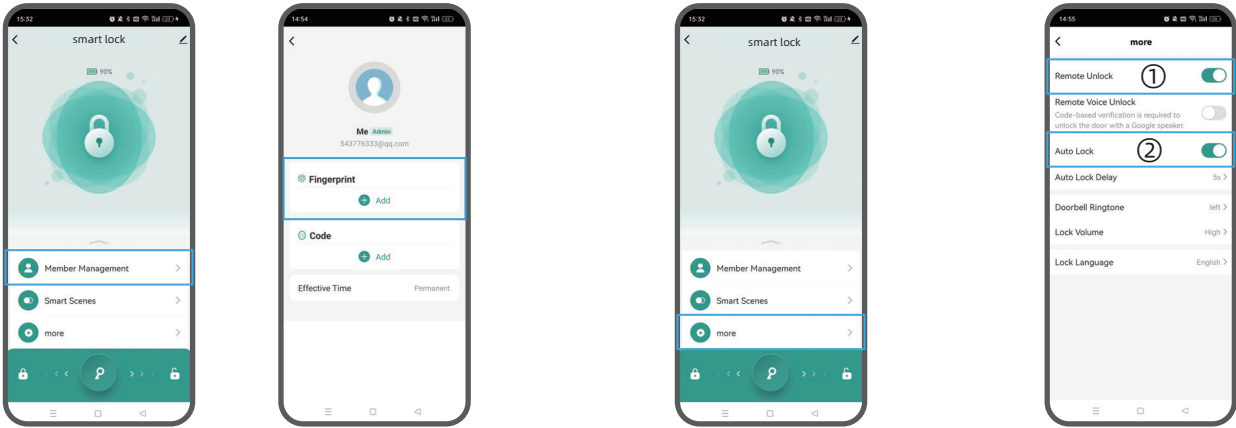
Tap **Member Management→Admin→Add code** →Enter a 6-9 digit password and set a code name .

Note: The first code you set is the admin passcode, it can be changed or deleted.



4.Set Fingerprints (up to50)

Tap **Member Management→Admin→Add Fingerprint→** Follow the on-screen instructions to add a fingerprint.



5.AutoLock

- ①more →Auto Lock Delay (Change the interval time as needed)
- ②more →Remote Unlock