



F2 Labs
16740 Peters Road
Middlefield, Ohio 44062
United States of America
www.f2labs.com

MPE REPORT

Manufacturer: Global Link Distribution Corp.
700 Patricia Court
Elkhart, Indiana 46516 USA

Applicant: Same as Above

Product Name: Global Link MRL Ultra Pro ES

Product Description: Bluetooth Motorized Rotary Lock

**Operating Voltage/Freq.
of EUT During Testing:** Battery-Operated (6VDC)

Model(s): MRLBT

FCC ID: 2BN28-MRLBT

Testing Commenced: 2025-02-13

Testing Ended: 2025-04-02

Test Results: In Compliance

The EUT complies with the EMC requirements when manufactured identically as the unit tested in this report, including any required modifications. Any changes to the design or build of this unit subsequent to this testing may deem it non-compliant.

Standards:

- KDB447498
- FCC 1.1310



Order No(s): F2P33857A

Applicant: Global Link Distribution Corp.
Model(s): MRLBT

Evaluation Conducted by:

Erik Tobin, EMC Engineer

Report Reviewed by:

Ken Littell, Vice President of Operations

F2 Labs
26501 Ridge Road
Damascus, MD 20872
Ph 301.253.4500

F2 Labs
16740 Peters Road
Middlefield, OH 44062
Ph 440.632.5541

F2 Labs
8583 Zionsville Road
Indianapolis, IN 46268
Ph 317.610.0611

This test report may be reproduced in full; partial reproduction only may be made with the written consent of F2 Labs. The results in this report apply only to the equipment tested.



TABLE OF CONTENTS

1	<u>ADMINISTRATIVE INFORMATION</u>
2	<u>SUMMARY OF TEST RESULTS/MODIFICATIONS</u>
3	<u>ENGINEERING STATEMENT</u>
4	<u>EUT INFORMATION AND DATA</u>
5	<u>RF EXPOSURE FOR DEVICE >20cm FROM HUMAN</u>
	➤ <u>FCC</u>



1 ADMINISTRATIVE INFORMATION

1.1 Measurement Location:

F2 Labs in Middlefield, Ohio.

Site description and attenuation data are on file with the FCC's Sampling and Measurement Branch at the FCC Laboratory in Columbia, MD.

1.2 Measurement Procedure:

All measurements were performed according to:

- KDB558074
- FCC 15.247

1.4 Document History

Document Number	Description	Issue Date	Approved By
F2P33857A-04E	First Issue	2025-04-03	K. Littell



2 SUMMARY OF TEST RESULTS

Test Name	Standard(s)	Results
RF Exposure for Device >20cm from Human	KDB447498 FCC 1.1310	Complies

Modifications Made to the Equipment
None



3 ENGINEERING STATEMENT

This report has been prepared on behalf of Global Link Distribution Corp. to provide documentation for the calculations described herein, based on the measurements taken in supporting Test Reports. This equipment has been tested, and calculations were found to comply with KDB447498 and FCC 1.1310. The test results found in this test report relate only to the item(s) tested.



4 EUT INFORMATION AND DATA

4.1 Equipment Under Test:

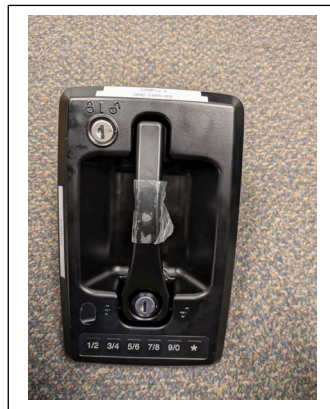
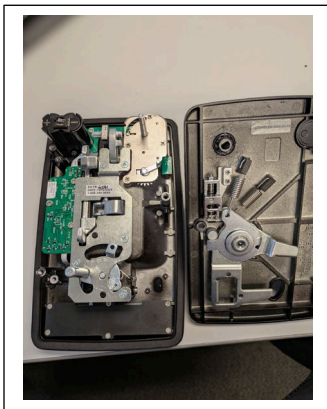
Product: Global Link MRL Ultra Pro ES

Model(s): MRLBT*

Serial No(s): 2842-EMRL005; 2842-EMRL002

FCC ID: 2BN28-MRLBT

**MRLBT-XXXXX-XXXX product family, where X represents cosmetic differences and includes MRLBT-42560-2006 (tested), MRLBT-42560P-2006 and MRLBT-42560-2006-1PK.*



4.2 Trade Name:

Global Link Distribution Corp.

4.3 Power Supply:

Battery-Operated (6VDC)

4.4 Applicable Rules:

- KDB447498
- FCC 1.1310

4.5 Antenna:

Integral



4.6 Accessories:

Device	Manufacturer	Model Number	Serial Number
Laptop	Dell	P104F	None Specified
Power Supply	Dell	DA65NM190	None Specified
Accessory Software Version:		TeraTerm 5	

4.7 Test Item Condition:

The equipment to be tested was received in good condition.

**5. RF EXPOSURE FOR DEVICE >20cm FROM HUMAN****5.1 Requirements: Distance used is 20cm**

FCC	
Limit:	1mW/cm ²
Formula used for result:	$\frac{E.I.R.P.}{4 \pi R^2}$
Results:	<p>E.I.R.P. = 3.945mW</p> <p>3.945mW at the 2402 MHz Low Channel (highest)</p> $\frac{3.945mW}{4 \pi R^2} = \frac{3.945mW}{5026.55} = 0.001mW/cm^2$