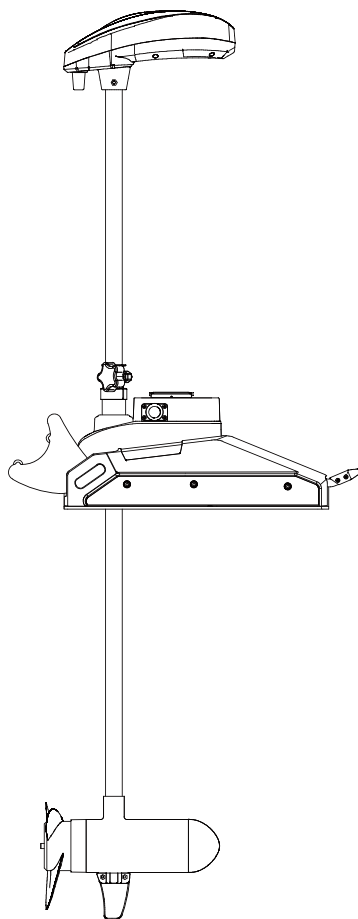


MAKO SHARK



OMAS
SERIES
Owner's Manual

TABLE OF CONTENTS

| | |
|--|----|
| SAFETY CONSIDERATIONS | 3 |
| WARRANTY | 4 |
| FEATURES | 5 |
| INSTALLATION | 6 |
| Installing the OMAIS | 6 |
| COPILOT | 7 |
| Controlling the motor with copilot | 7 |
| BATTERY & WIRING INSTALLATION | 13 |
| Boat Rigging & Product Installation | 13 |
| Conductor Gauge and Circuit Breaker Sizing Table | 13 |
| Selecting the Correct Batteries | 14 |
| Additional Considerations | 14 |
| Connecting the Batteries | 15 |
| PARTS DIAGRAM & PARTS LIST | 16 |
| PARTS DIAGRAM & PARTS LIST 1 | 17 |
| PARTS DIAGRAM & PARTS LIST 2 | 18 |

SAFETY CONSIDERATIONS

Please thoroughly read the user manual. Follow all instructions and heed all safety and cautionary notices. Use of this motor is only permitted for persons that have read and understood these user instructions. Minors may use this motor only under adult supervision.

WARNING

You are responsible for the safe and prudent operation of your vessel. We have designed your MAKOSHARK product to be an accurate and reliable tool that will enhance boat operation and improve your ability to catch fish. This product does not relieve you from the responsibility for safe operation of your boat. You must avoid hazards to navigation and always maintain a permanent watch so you can respond to situations as they develop. You must always be prepared to regain manual control of your boat. Learn to operate your MAKOSHARK product in an area free from hazards and obstacles.

WARNING

Never run the motor out of the water, as this may result in injuries from the rotating propeller. The motor should be disconnected from the power source when it is not in use or is off the water. When connecting the power-supply cables of the motor to the battery, ensure that they are not kinked or subject to chafe and route them in such a way that persons cannot trip over them. Before using the motor make sure that the insulation of the power cables is not damaged. Disregarding these safety precautions may result in electric shorts of battery(s) and/or motor. Always disconnect motor from battery(s) before cleaning or checking the propeller. Avoid submerging the complete motor as water may enter the lower unit through control head and shaft. If the motor is used while water is present in the lower unit considerable damage to the motor can occur. This damage will not be covered by warranty.

WARNING

Take care that neither you nor other persons approach the turning propeller too closely, neither with body parts nor with objects. The motor is powerful and may endanger or injure you or others. While the motor is running watch out for persons swimming and for floating objects. Persons who lack the ability to run the motor or whose reactions are impaired by alcohol, drugs, medication, or other substances are not permitted to use this motor. This motor is not suitable for use in strong currents. The constant noise pressure level of the motor during use is less than 70dB(A). The overall vibration level does not exceed 2,5 m/sec².

WARNING

When stowing or deploying the motor, keep fingers clear of all hinge and pivot points and all moving parts. In the event of unexpected operation, remove power leads from the battery.

WARNING

It is recommended to only use MAKOSHARK approved accessories with your MAKOSHARK motor. Using non-approved accessories including to mount or control your motor may cause damage, unexpected motor operation and injury. Be sure to use the product and approved accessories, including remotes, safely and in the manner directed to avoid accidental or unexpected motor operation. Keep all factory installed parts in place including motor and accessory covers, enclosures and guards.

WARRANTY

WARRANTY ON MAKOSHARK SALTWATER TROLLING MOTORS

Makoshark extends the following limited warranty to the original retail purchaser only. Warranty coverage is not transferable.

MAKOSHARK Limited One-Year Warranty on the Entire Product

Makoshark warrants to the original retail purchaser only that the purchaser's new MAKOSHARK saltwater trolling motor will be materially free from defects in materials and workmanship appearing within One (1) years after the date of purchase. Makoshark will (at its option) either repair or replace, free of charge, any parts found by Makoshark to be defective during the term of this warranty. Such repair, or replacement shall be the sole and exclusive liability of Makoshark and the sole and exclusive remedy of the purchaser for breach of this warranty.

MAKOSHARK Limited Lifetime Warranty on Composite Shaft

Makoshark warrants to the original retail purchaser only that the composite shaft of the purchaser's MAKOSHARK trolling motor will be materially free from defects in materials and workmanship appearing within the original purchaser's lifetime. Makoshark will provide a new composite shaft, free of charge, to replace any composite shaft found by Makoshark to be defective during the term of this warranty. Providing a new composite shaft shall be the sole and exclusive liability of Makoshark and the sole and exclusive remedy of the purchaser for breach of this warranty; and purchaser shall be responsible for installing, or for the cost of labor to install, any new composite shaft provided by Makoshark.

Exclusions & Limitations

This limited warranty does not apply to products that have been used commercially or for rental purposes. This limited warranty does not cover normal wear and tear, blemishes that do not affect the operation of the product, or damage caused by accidents, abuse, alteration, modification, shipping damages, negligence of the user or misuse, improper or insufficient care or maintenance. **DAMAGE CAUSED BY THE USE OF OTHER REPLACEMENT PARTS NOT MEETING THE DESIGN SPECIFICATIONS OF THE ORIGINAL PARTS WILL NOT BE COVERED BY THIS LIMITED WARRANTY.** The cost of normal maintenance or replacement parts which are not in breach of the limited warranty are the responsibility of the purchaser. Prior to using products, the purchaser shall determine the suitability of the products for the intended use and assumes all related risk and liability. Any assistance Makoshark provides to or procures for the purchaser outside the terms, limitations or exclusions of this limited warranty will not constitute a waiver of the terms, limitations or exclusions, nor will such assistance extend or revive the warranty. Makoshark will not reimburse the purchaser for any expenses incurred by the purchaser in repairing, correcting or replacing any defective products or parts, except those incurred with Makoshark's prior written permission.

MAKOSHARK'S AGGREGATE LIABILITY WITH RESPECT TO COVERED PRODUCTS IS LIMITED TO AN AMOUNT EQUAL TO THE PURCHASER'S ORIGINAL PURCHASE PRICE PAID FOR SUCH PRODUCT.

MAKOSHARK Service Information

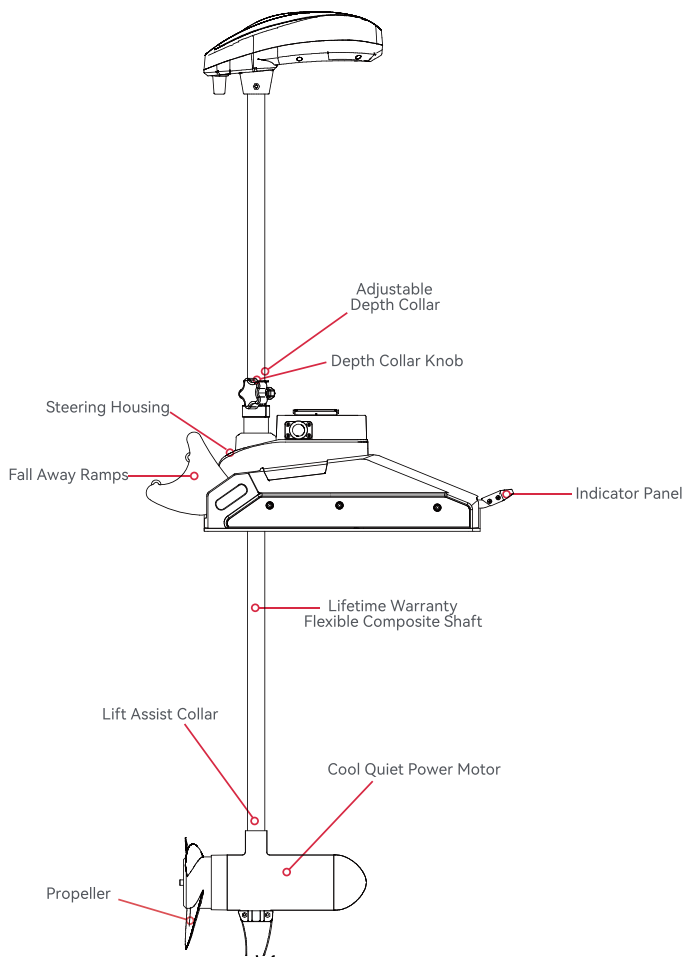
To obtain warranty service, the product believed to be defective, and proof of original purchase (including the date of purchase), must be presented to a MAKOSHARK. Any charges incurred for service calls, transportation or shipping/freight to/from the MAKOSHARK Authorized Service Center or factory, labor to haul out, remove, re-install or re-reg products removed for warranty service, or any other similar items are the sole and exclusive responsibility of the purchaser. Products purchased outside of China, must be returned prepaid with proof of purchase (including the date of purchase and serial number) to any Authorized MAKOSHARK Service Center in the country of purchase. Warranty service can be arranged by contacting a MAKOSHARK Authorized Service Center. **Products repaired or replaced will be warranted for the remainder of the original warranty period (or for 90 days from the date of repair or replacement, whichever is longer).** For any product that is returned for warranty service that Makoshark finds to be not covered by or not in breach of this limited warranty, there will be a billing for services rendered at the prevailing posted labor rate and for a minimum of at least one hour.

NOTICE: Do not return your MAKOSHARK product to your retailer. Your retailer is not authorized to repair or replace

NOTICE: THERE ARE NO EXPRESS WARRANTIES OTHER THAN THESE LIMITED WARRANTIES. IN NO EVENT SHALL ANY IMPLIED WARRANTIES INCLUDING ANY IMPLIED WARRANTIES OF MERCHANTABILITY OR FITNESS FOR PARTICULAR PURPOSE, EXTEND BEYOND THE DURATION OF THE RELEVANT EXPRESS LIMITED WARRANTY. IN NO EVENT SHALL Makoshark BE LIABLE FOR PUNITIVE, INDIRECT, INCIDENTAL, CONSEQUENTIAL OR SPECIAL DAMAGES. Without limiting the foregoing, Makoshark assumes no responsibility for loss of use of product, loss of time, inconvenience or other damage.

Some states do not allow limitations on how long an implied warranty lasts or the exclusion or limitation of incidental or consequential damages, so the above limitations and/or exclusions may not apply to you. This warranty gives you specific legal rights and you may also have other legal rights which vary from state to state.

FEATURES



NOTICE: Specifications subject to change without notice. This diagram is for reference only and may differ from your actual motor.

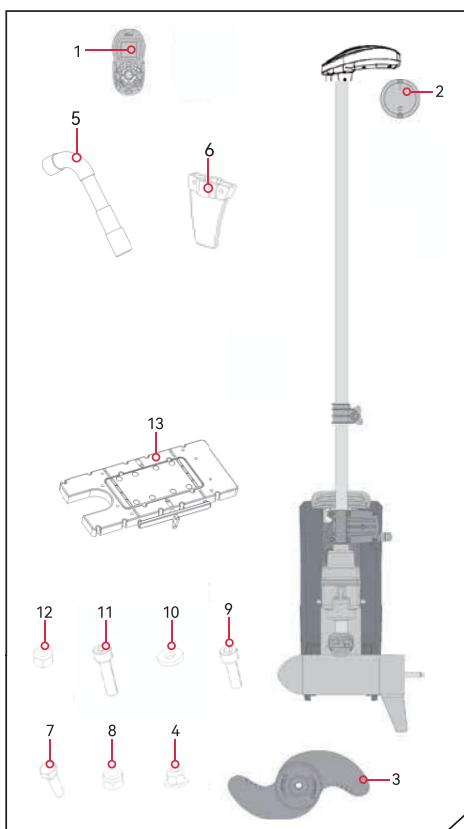
INSTALLATION

INSTALLING THE OMAIS

Your new comes with everything you'll need to directly install it to the boat. This motor can be directly mounted to the boat or coupled with a quick release bracket for ease of mounting and removal. For installation with a quick release bracket, refer to the installation instructions provided with the bracket. For compatible quick release mounting brackets and to locate your nearest dealer, visit www.makoshark.cn. To install the motor directly to the boat, please follow the instructions provided in this manual. Please review the parts list, mounting considerations and tools needed for installation prior to getting started. For additional product support, please visit www.makoshark.cn.

INSTALLATION PARTS LIST

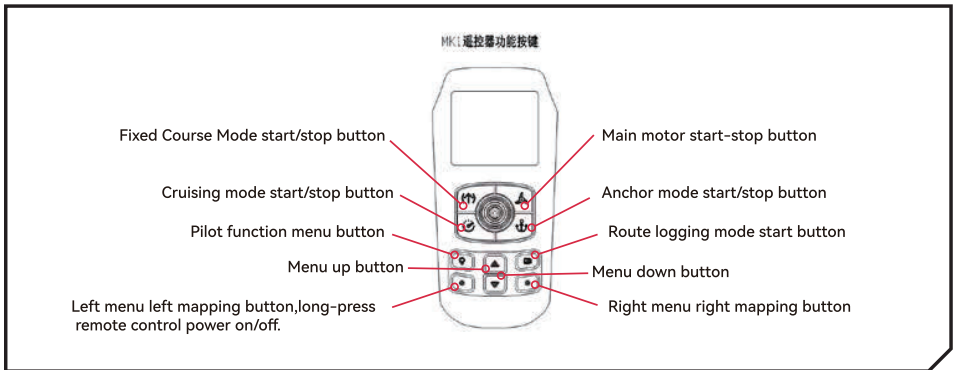
| Item / Assembly | Description | Qty. |
|-----------------|-------------------------------|------|
| 1 | Remote Control | 1 |
| 2 | External Sensor (Optional) | 1 |
| 3 | Propellor | 1 |
| 4 | M10 nut | 1 |
| 5 | M15 hexagonal spanner | 1 |
| 6 | Fins | 1 |
| 7 | M5*16 hexagon socket screws | 2 |
| 8 | M5 nut | 2 |
| 9 | M6*16 hexagon socket screws | 4 |
| 10 | gaskets | 1 |
| 11 | M6*25 hexagon socket screw | 12 |
| 12 | M6 nut | 4 |
| 13 | Plastic quick release Bracket | 1 |



COPILOT

CONTROLLING THE MOTOR WITH COPILOT

Review the complete CoPilot section of this manual to become familiar with this feature. For more information on CoPilot or for additional product support, please visit www.makoshark.cn.



› Prop ON/OFF

This button is located in the middle of the remote. It turns the propeller on or off. Press the button once to turn the propeller ON; press button a second time to turn it OFF. The button does not need to be held down.

› Steer Left & Steer Right

These buttons are located to the right and left of the Prop ON/OFF button and have an arrow symbol. They cause the motor to turn in the desired direction as long as the button is held down. If the Steer Right or Steer Left button is held for more than seven seconds, the steering will automatically stop until the button is pressed again.

› Increase Speed & Decrease Speed

The Increase Speed and Decrease Speed buttons are located above the Prop ON/OFF button and are identified with a positive and negative symbol. Pressing and releasing these buttons causes the speed to increase or decrease by increments of 1. The speed is adjustable from level 0-10. At level 0, the prop will not turn.

In audio mode 2, an audible beep is heard for each increment when changing speed. Attempting to go higher than speed 10 or lower than speed 0 will result in the speed not changing and no beep will be heard. See the Audio Mode section for more information.

If the receiver senses no foot pedal or remote operation for 1 hour, the remote speed setting is automatically set to zero. This helps prevent unintentional activation of the propeller if the prop on/off remote button is inadvertently pressed.

INSTALLING THE OMAIS

MOUNTING CONSIDERATIONS

It is recommended that the motor be mounted as close to the centerline of the boat as possible. Make sure the area under the mounting location is clear to drill holes and install nuts and washers. Make sure the motor rest is positioned far enough beyond the edge of the boat. The motor must not encounter any obstructions as it is lowered into the water or raised into the boat when stowed and deployed. Consider a quick release or adapter bracket with the installation of your motor.

TOOLS AND RESOURCES REQUIRED

- Phillips Screw Driver
- Drill
- Drill Bit
- Box End Wrench
- A second person to help with the installation

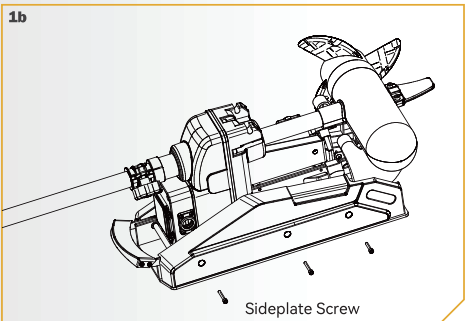
INSTALLATION

INSTALLING THE OMAIS

1

- Place the mount on an elevated, level surface such as a workbench or the tailgate of a pickup. The motor, as removed from the box, should be in the stowed position.
- Remove the four sideplate screws using a Phillips screwdriver. Two of these screws will be located on each side of the mount.

NOTICE: This motor weighs approximately 65lbs. MAKO SHARK recommends having a second person help with the installation.

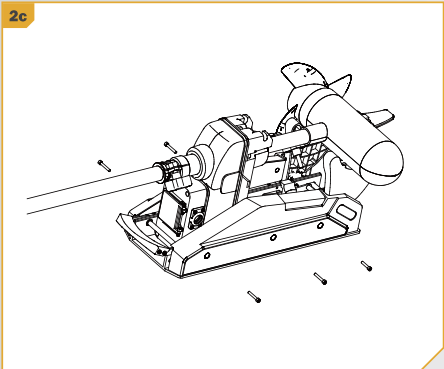


INSTALLING THE OMAIS

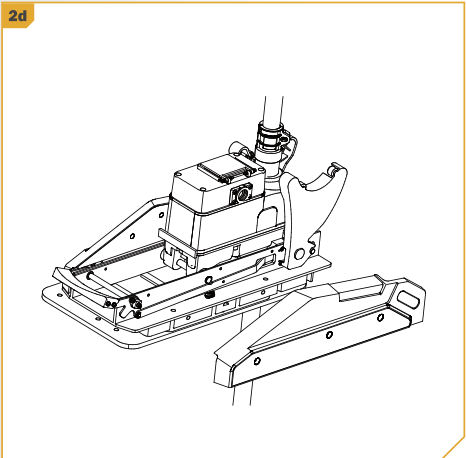
- 2
- c. Remove the Right Sideplate.

d. Swing the Left Sideplate out and away from the Base Extrusion.

2c



2d



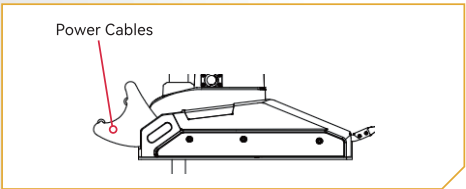
- 3
- e. Make sure that the Power Cables from the battery are disconnected, or that the breaker,if equipped, is "off."



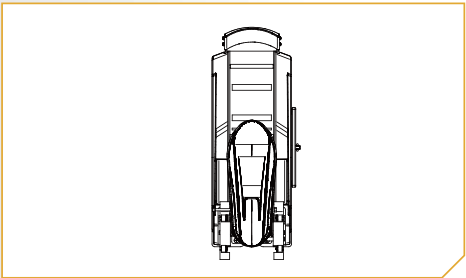
WARNING

Make sure the motor is mounted on a level surface and is not connected to a power source.

Power Cables



- 4
- f. Place the mount as close to the centerline or keel of the boat as possible. The motor can be installed on either the Port or Starboard side of the boat based on personal preference. Check placement with the motor in the stowed and deployed positions. Review the mounting considerations at the beginning of the installation.



INSTALLING THE OMAIS

5

- i. It is recommended to mark 4 of the 4 holes in the Base Extrusion .
- j. Drill through the deck of the boat using a Drill Bit on the marked locations.

