

1. Antenna Description:

| | |
|-----------------|---|
| Antenna type | PCB antenna |
| Model | MK1-2.4G |
| Frequency range | 2400-2500MHz |
| Manufacturer | Mako Technologies (Taizhou) co.,Ltd. |
| Address | Building #7, Incubation Zone A, #2 Jintang North Road, East District, Wenling City, Zhejiang Province 317511, China |
| ANT Peak Gain | 1.12 dBi |

2. Antenna Photo:

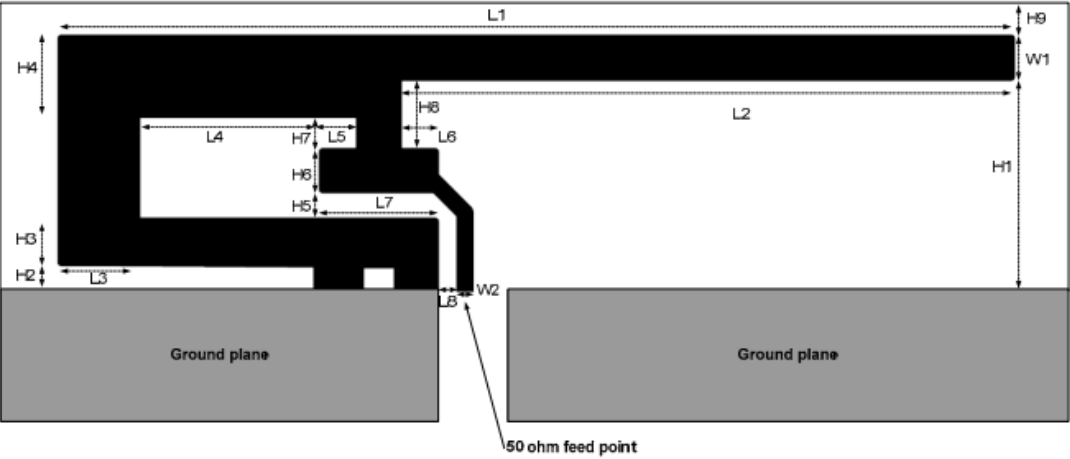


Figure 1. IFA Dimensions

| | | | |
|----|---------|----|----------|
| H1 | 5.70 mm | W2 | 0.46 mm |
| H2 | 0.74 mm | L1 | 25.58 mm |
| H3 | 1.29 mm | L2 | 16.40 mm |
| H4 | 2.21 mm | L3 | 2.18 mm |
| H5 | 0.66 mm | L4 | 4.80 mm |
| H6 | 1.21 mm | L5 | 1.00 mm |
| H7 | 0.80 mm | L6 | 1.00 mm |
| H8 | 1.80 mm | L7 | 3.20 mm |
| H9 | 0.61 mm | L8 | 0.45 mm |
| W1 | 1.21 mm | | |

Table 1. IFA Dimensions

3. Test Equipment & Conditions

3.1 Test instrument

VSWR is tested using Agilent E5071B connected to a hand mechanism, and the status is free space.

3.2 Test environment and methods

Dark room specifications: ETS-743

TD-SCDMA test equipment: StarPoint SP6010/Agilent 8960

LTE-TDD/FDD-SCDMA test equipment: StarPoint SP8011/CMW500

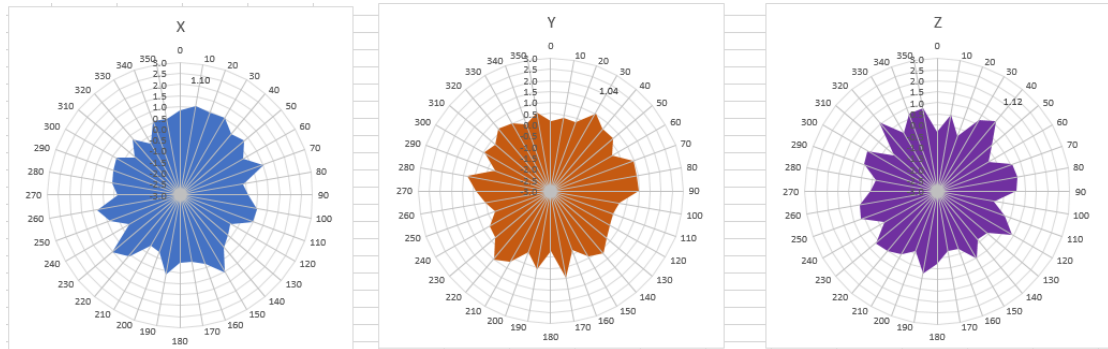
WCDMA/GSM/CDMA test equipment: Agilent 8960

Passive efficiency testing equipment: Agilent Technologies E5071B

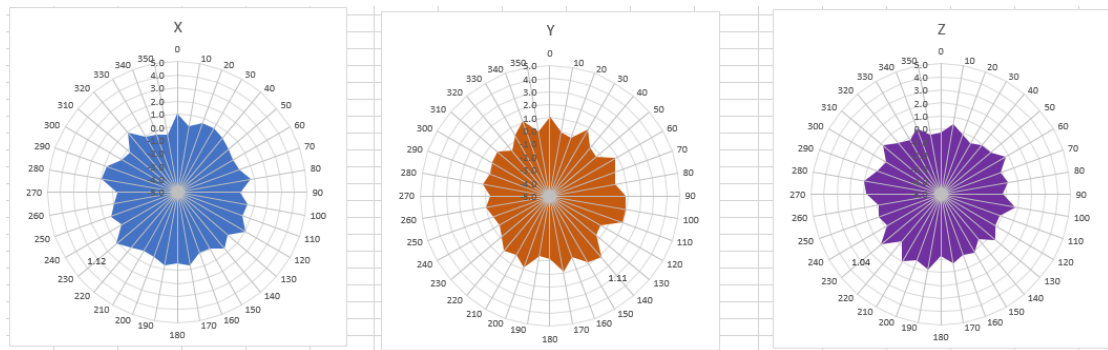


4 . Antenna Radiation Pattern

2400MHz



2450MHz



2500MHz

