



INSTRUCTIONS

ZETA Low-Power Wide Area Networks(LPWAN)

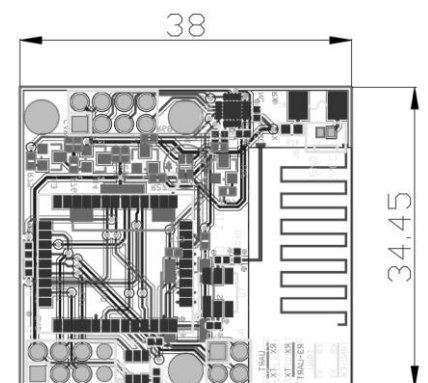
MSAT-8692-PC10 Antenna Specifications

Chapter 1 Product Introduction

MSAT-8692-PCB10 is a PCB built-in antenna for the 868/920MHz frequency band, with an antenna size of 38mm × 34.5mm. It is suitable for various terminal devices (various sensors), wireless communication modules, etc. in the 868/920MHz frequency band. The antenna has a small size, reliable performance, and is built-in for module installation and use, with stable signals.

Chapter 2 Product Specifications

Electrical Parameters	
frequency range	863~870MHz 902~928MHz
Antenna gain	0dBi
Voltage standing wave ratio	≤1.5
Polarization direction	linear polarization
Radiation direction	Omnidirectional
Input impedance	50 Ω
Power capacity	2W
Other parameters	
size	38*34.5mm
Overall weight	1g
Antenna material	PCB
working temperature	-30 ~ +75℃
Storage temperature	-30 ~ +75℃



Shanghai, China

Room2001, No. 198 Jingzhou Road
(Wanshuo Plaza), Yangpu District,
Shanghai

+86(0) 21-80198001

info@zifisense.com

Xiamen, China

Room 803, Building A-05,
Software Park Phase III,
Jimei District, Xiamen

+86 (0) 592 6070310

info@zifisense.com

Cambridge, UK

3 Charles Babbage Road,
CambridgeCB3-0GT
United Kingdom

+44(0) 1223 491 099

info@zifisense.com

ZiFiSense Wechat Public Account

