

Smart Ear Cleaner (Visual WiFi)  
user manua



Please read this manual  
carefully before use  
and keep it properly for  
future reference.

APP download  
method



Please use your mobile browser to  
scan the QR code for downloading  
and installation.



Cooler X

▶ iOS app store

Android Google

Android China

Apple users

Select the los appstore option  
after scanning the code.Open  
the App Store to download and  
install.

You can also directly search for  
Cooler X downloads in the  
App Store.



Cooler X

▶ iOS app store

▶ Android Google

Android China

Android users

A fter scanning the code, select  
the Android Google option to  
enter the next page.Click:  
Download and install through  
third-party browser options.

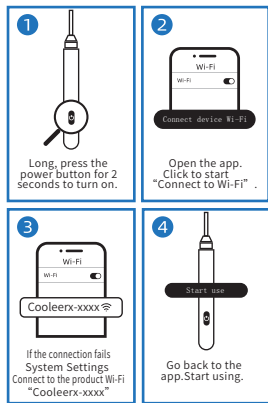
Charging Instructions:

1. Before initial use, please ensure  
that the product is fully charged.
- 2.It is not recommended to complete-  
ly drain the battery.
- 3.When the indicator light flashesred,  
please charge it promptly
- 4.When charging, connect theType-C  
interface plug to this product.

Indicator Light  
Instructions:

1. After powering on, the blue lightwill  
flash.
- 2.When connected to Wi-Fi, theblue  
light will stay on.
3. When the battery is low, the redlight  
will flash.
4. During charging, the red light  
willstay on.5. When the battery is fully  
charged,the red light will turn off.

APP Connection:



If the system prompts: “The  
current WLAN cannot access the  
internet. Do you want to continue  
using this WLAN?”, please do not  
switch Wi-Fi networks. Click on  
“Use” to proceed.

Translation:

Product Name: Smart Ear Cleaner  
(Visual WiFi)  
Product Mode: Cooler-X1  
Network Standard: IEEE 802.11b/g/n  
Antenna: Built-in FPC  
Antenna Operating Frequency:2.4Ghz  
Image Transmission Speed: 25fps  
Connection Method:Wi-Fi Hotspot  
Connection  
Battery: 130mAh  
Input Current: DC5V 0.5A  
Image Sensor: CMOS  
Pixels: 5 million  
Gravity Sensor: 3-axis

Troubleshooting:

Screen freezing:

\* Make sure the product is used in  
close proximity to the phone within  
the Wi-Fi signal transmis-sion range.

\* Low battery can weaken the Wi-Fi  
signal, so please charge it in a timely  
manner.

\*If there are many Wi-Fi signalsin  
the environment, they may interfere with  
the signal of the product. Please use it  
in an area with fewer Wi-Fi signals.

No image display:

\* Confirm that the app has been  
granted permission to use network  
data.

\* Check if the phone is connected to  
the product's Wi-Fi network. If  
connected but still no display, try  
closing and reopening the app.

Unable to store images

or videos:

\* Confirm that the app has been  
granted permission to take photos  
and record videos.

Unable to charge:

\* Please use the provided charging  
cable to charge.

\* Try using a different charger if the  
problem persists.

Precautions

- 1.Please turn off the product before  
charging. Do not use a fast charger for  
charging.
2. If the image is unclear, please use a  
cotton swab to wipe the lens.
- 3.Before use, observe the surround-  
ing environment to prevent accidents.
4. It is normal for the lens and body to  
generate heat.
- 5.This product is for personal care use  
only and should not be used as a  
medical device.
- 6.Please keep the product in a cool,  
dry place, away from fire and  
corrosive substances.
7. This product is not suitable for  
children.
8. Do not immerse the product in  
water or rinse it under a faucet.
9. Do not allow children to play with  
this product.
10. Do not take the product to an  
unauthorized service center for  
repairs.
11. Do not use any accessories or  
partsproduced by other manufactur-  
ers, using such accessories or parts  
will void your warranty.

**FCC Compliance Statement:** This device  
complies with Part 15 of the FCC Rules.  
Operation is subject to the following  
twoconditions:(1)this device may not cause  
harmful interference, and (2)this device must  
accept any interference received,including  
interference that may cause undesired  
operation.Changes or modifications not  
expressly approved by the party responsible  
for compliance couldvoid the user's authority  
to operate the equipment.

**NOTE:**This equipment has been tested and  
found to comply with the limits for a Class B  
digital device, pursuant to Part 15 of the FCC  
Rules.These limits are designed to provide  
reasonable protection against harmful  
interference in a residential instal-ation. This  
equipment generates,uses instructions, may  
cause harmful inter-ference to radio or  
television reception, which can be  
determined by turning the equip-ment off  
and on,the user is encouraged to try to  
correct the interference by one or more of the  
following measures:  
--Reorient or relocate the receiving antenna.  
--Increase the separation between the  
equipment and receiver.  
--Connect the equipment into an outlet on a  
circuit different from that to which the  
receiver is connected.  
--Consult the dealer or an experienced  
radio/TVtechnician for help.

Card  
After-sales Warranty

Product Warranty Policy:

- 1.Under normal use, the warranty  
period for this product is one year.
2. The following situations are not  
covered by the warranty (including  
but not limited to): a. No warranty  
card or any proof of purchase. b.  
Exceeding the scope  
of precautions,abnormal use. c.Self-re-  
pair or damage caused by human  
factors(including improper operation),  
aswell as damage caused by natura  
disasters. d. Exceeding the “Three  
Guarantees” period, or using the  
product for purposes beyond its  
intended use.
3. When returning the product for  
repair, please include the warranty  
card.
4. The company reserves the right to  
modify the warranty terms and the  
final interpretation of the terms.

After-sales Warranty  
Card

Customer Name \_\_\_\_\_

Customer Phone \_\_\_\_\_

Customer Address \_\_\_\_\_

\_\_\_\_\_

\_\_\_\_\_

Product Name \_\_\_\_\_

Product Specifications/Model \_\_\_\_\_

Remarks \_\_\_\_\_

\_\_\_\_\_

Thank you for choosing our  
product. All our products undergo  
rigorous quality testing before  
leaving the factory. If you have  
any issues with the product,  
please contact our after-sales  
service. We are committed to  
providing you with assistance.

智能掏耳勺(可视WiFi)  
说明书



请在使用前仔细阅读  
本说明书,请妥善保管  
以备日后查询。

APP下载方式



请使用手机浏览器扫二维码下载安装。



Cooler X

▶ iOS app store(苹果商店)

Android Google(安卓国外)

Android China(安卓国内)

苹果用户

扫码后选择 iOS App Store 选  
项打开 App Store 下载安装。也  
可以直接在 App Store 搜索  
Cooler X 下载。



Cooler X

▶ iOS app store(苹果商店)

Android Google(安卓国外)

▶ Android China(安卓国内)

安卓用户

扫码后选择Android China(安  
卓国内)选项进入下一页面后点  
击:通过第三方浏览器下载选项,  
下载并安装。

充电说明:

- 1.初次使用之前,请将产品充满电;
- 2.不建议将电池电量完全耗尽;
- 3.当指示灯红灯闪烁时,请及时充  
电;
- 4.充电时将Type-C接口端插头线  
连接到本产品。

指示灯说明:

- 1.开机后蓝灯闪烁;
- 2.Wi-Fi连接后蓝灯常亮;
- 3.电量低红灯闪烁;
- 4.充电时红灯常亮,
- 5.充满电后红灯熄灭。

APP连接:



若系统提示:当前WLAN不可上网,  
是否继续使用此WLAN.请不要切换  
Wi-Fi, 点击“使用”即可。

产品参数:

产品名称:智能掏耳勺  
(可视WiFi)  
产品型号:Cooler-X1  
网络标准:IEEE802.11b/g/n  
天线:内置FPC天线  
工作频率:2.4Ghz  
图像传输速度:25fps  
连接方式:WiFi热点连接  
电池:130mAh  
输入电流:DC5V0.5A  
图像传感器:CMOS  
像素:500万  
重力传感器:3轴

故障排除

画面卡顿:

- 超过Wi-Fi信号传输距离产品与手  
机近更离使用;
- 电量不足导致Wi-Fi信号变弱,请及  
时充电;
- 环境存在较多Wi-Fi信号时,会干扰  
本产品的信号,请在Wi-Fi信号偏少  
的区域使用。

无图像显示:

- 确认给予APP网络数据使用权限
- 确认手机是否连接上产品Wi-Fi名  
称;
- 确认连接后,如还无显示:关闭APP  
重新打开APP。

拍摄无法存储图像或视频:

- 确认给予APP拍照录像权限。

无法充电

- 请使用随产品附赠的充电线充电;
- 更换充电器后再试。

注意事项

- 1.请将产品关机后,再进行充电;  
请勿使用快充充电器充电。
- 2.图像不清晰时,请使用棉签擦拭  
镜头。
- 3.使用前请观察周围环境,防止意  
外发生。
- 4.镜头、机身发热属于正常现象。
- 5.本产品仅作为个人护理用品,不  
能当作医疗设备使用。
- 6.请将产品放置在阴凉干燥处,远  
离火源及腐蚀性物品。
- 7.本产品不适合儿童使用。
- 8.请勿将本产品浸入水中;请勿在  
自来水龙头下冲洗。
- 9.不得让儿童玩耍本产品。
- 10.请勿将本产品送到非厂家授权  
的服务中心检修。
- 11.切勿使用由其他制造商生产的  
任何附件或部件;如果使用此类附  
件或部件,您的保修将失效。

售后保障卡

产品保修政策:

- 1.本产品在正常使用情况下,保修  
期限为一年。
- 2.出现以下情况不属于保修范围(  
包括但不限于):  
a.无保修卡或任何凭证;  
b.超出注意事项范围、非正常使  
用;  
c.自行修理或人为损坏(含操作不  
当);自然灾害对产品造成的影响;  
d.超过“三包”期限;产品用于其他  
用途等。
- 3.产品维修时,应连同保修卡一同  
寄回。
- 4.本公司保留对保修条款的修改  
权及最终解释权。

保修卡

客户姓名 \_\_\_\_\_

客户电话 \_\_\_\_\_

客户地址 \_\_\_\_\_

\_\_\_\_\_

\_\_\_\_\_

产品名称 \_\_\_\_\_

产品规格/型号 \_\_\_\_\_

备注 \_\_\_\_\_

\_\_\_\_\_

\_\_\_\_\_

感谢您选择本产品,本公司所有产品  
出厂前均经过严格的质量检测,  
如有任何产品问题,请联系售后。

正面

反面