

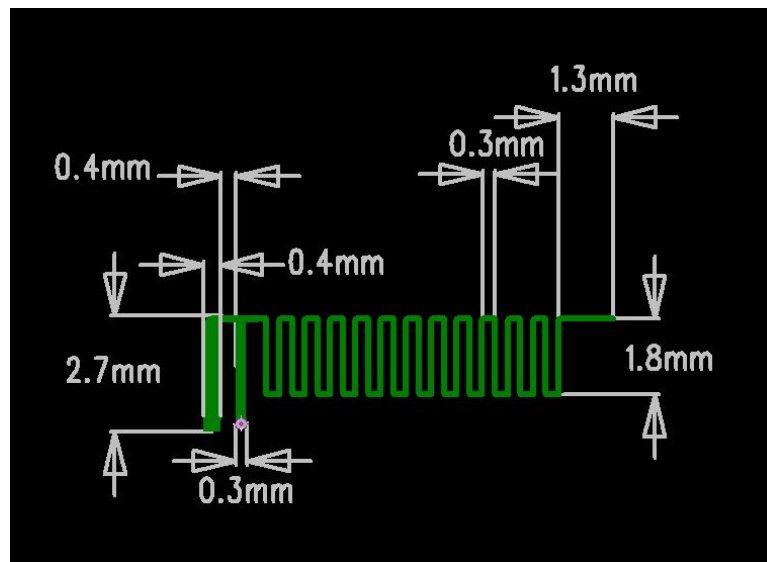
Antenna Specification

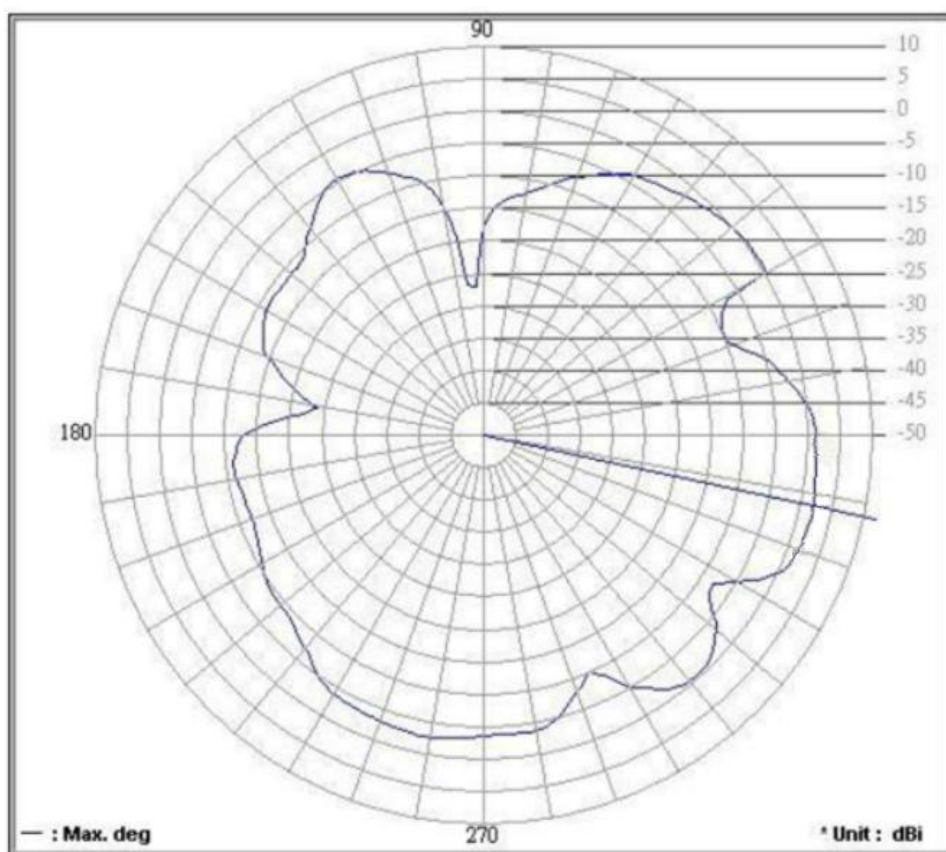
Specifications

Summary

| ITEM | SPEC. | |
|----------------------|----------------------------------|----------------------------------|
| Center Frequency | 2400 MHz 2441 MHz 2480 MHz | 1.85 dBi 1.82 dBi 1.80 dBi |
| MAX. GAIN | 1.85 dBi | |
| Polarization | Horizontal | |
| Azimuth Beam Pattern | Omni-directional | |
| Impedance | 50 Ω | |
| Antenna Length | 6.6 mm | |
| Antenna type | PCB Antenna | |

Antenna Photo & Length





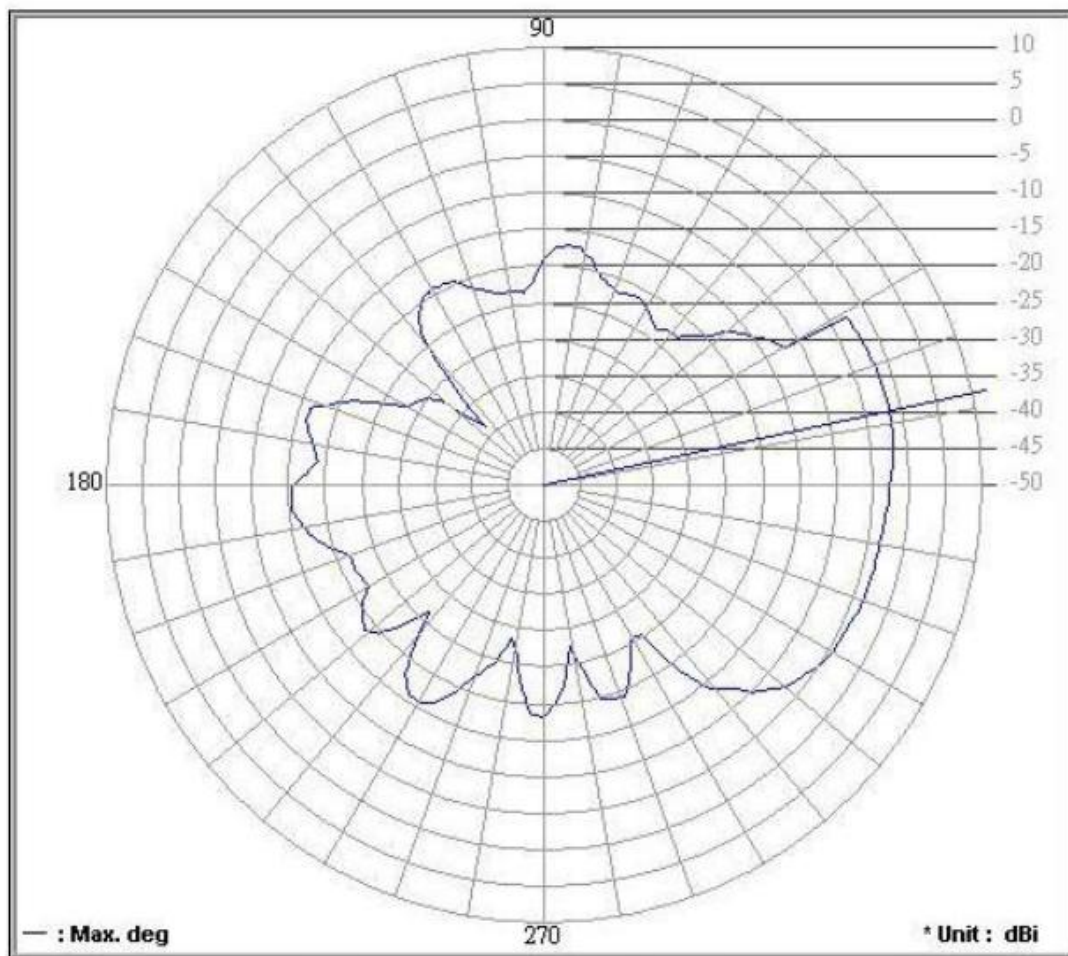
Frequency (MHz): **2402.00** Antenna Polarity: **Horizontal** Average Gain (dB): **-3.64**

Maximum Gain (dB): **1.85** Maximum Gain (degree): **348**

Minimum Gain (dB): **-27.08** Minimum Gain (degree): **93**

C:\Antenna Pattern V5.0\Graph\0818\08180019.png

1.2 Vertical



Frequency (MHz): **2402.00**

Antenna Polarity: **Vertical**

Average Gain (dB): **-9.57**

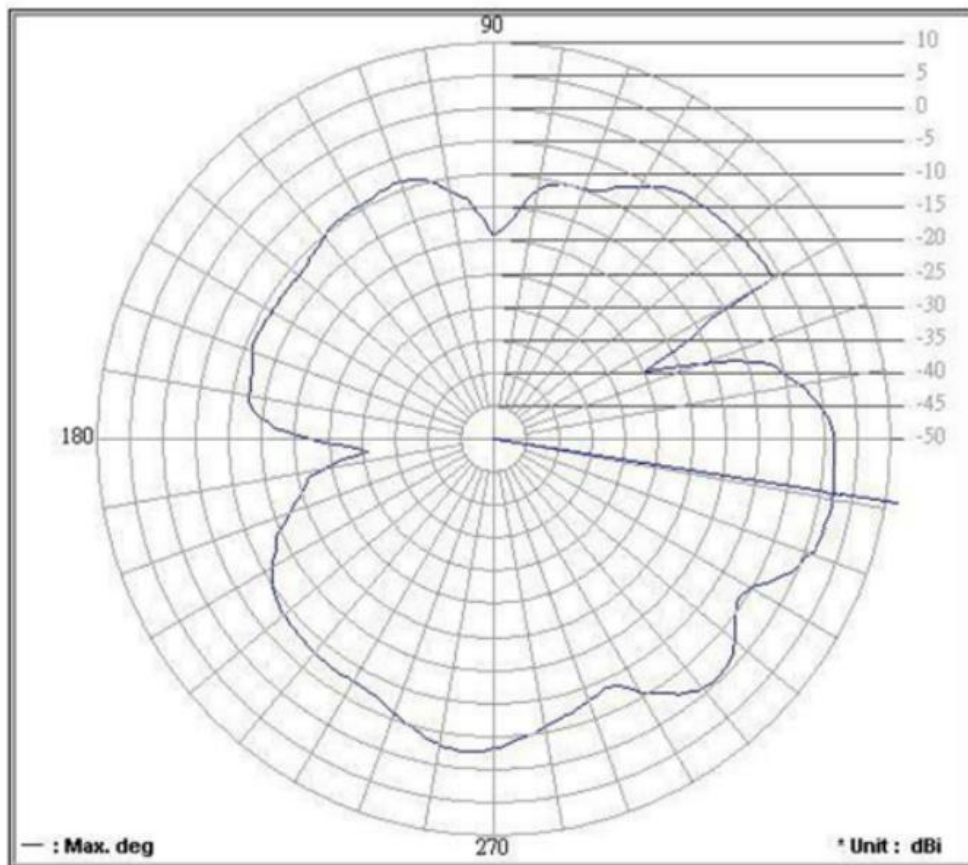
Maximum Gain (dB): **-1.54**

Maximum Gain (degree): **12**

Minimum Gain (dB): **-38.76**

Minimum Gain (degree): **135**

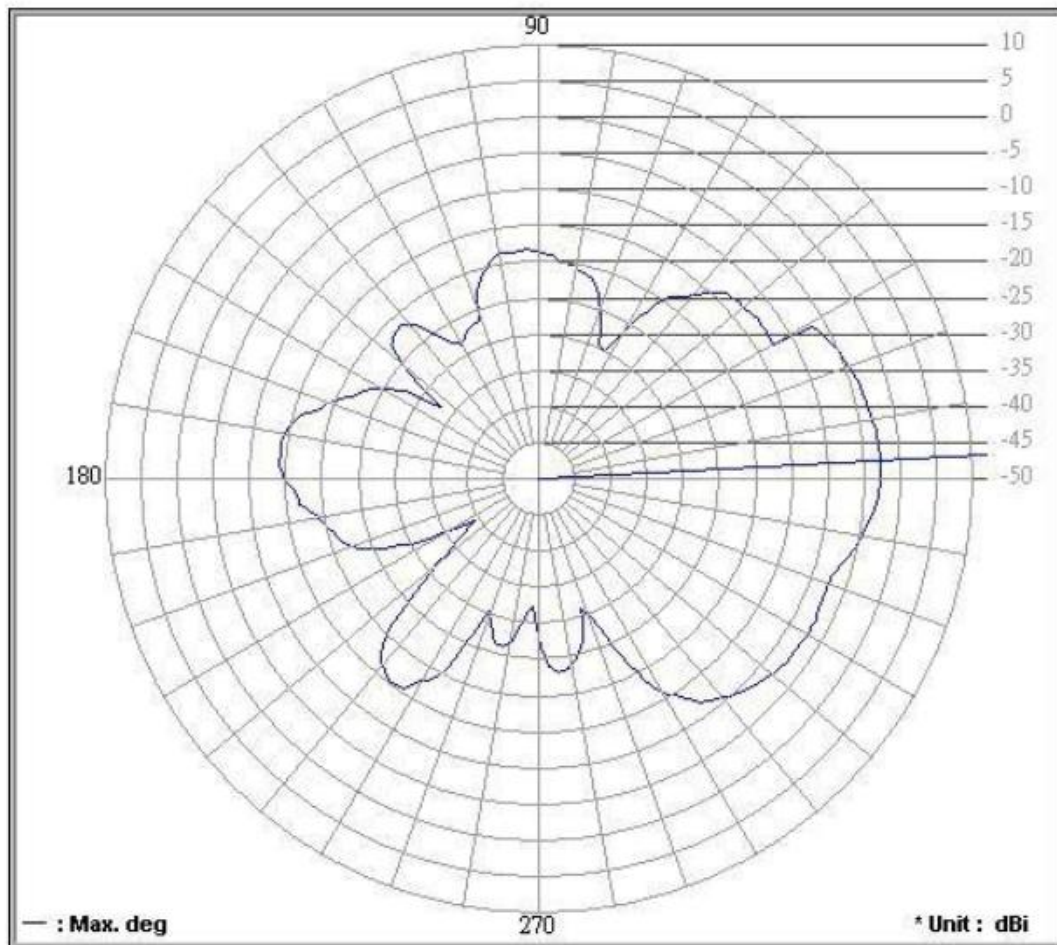
C:\Antenna Pattern V5.0\Graph\0818\08180024.png



Frequency (MHz) : **2441.00** Antenna Polarity : **Horizontal** Average Gain (dBi) : **-4.64**
Maximum Gain (dBi) : **1.82** Maximum Gain (degree) : **351**
Minimum Gain (dBi) : **-30.92** Minimum Gain (degree) : **186**

C:\Antenna Pattern V5.0\Graph\0818\08180020.png

2.2 Vertical



Frequency (MHz) : **2441.00**

Antenna Polarity : **Vertical**

Average Gain (dB) : **-11.06**

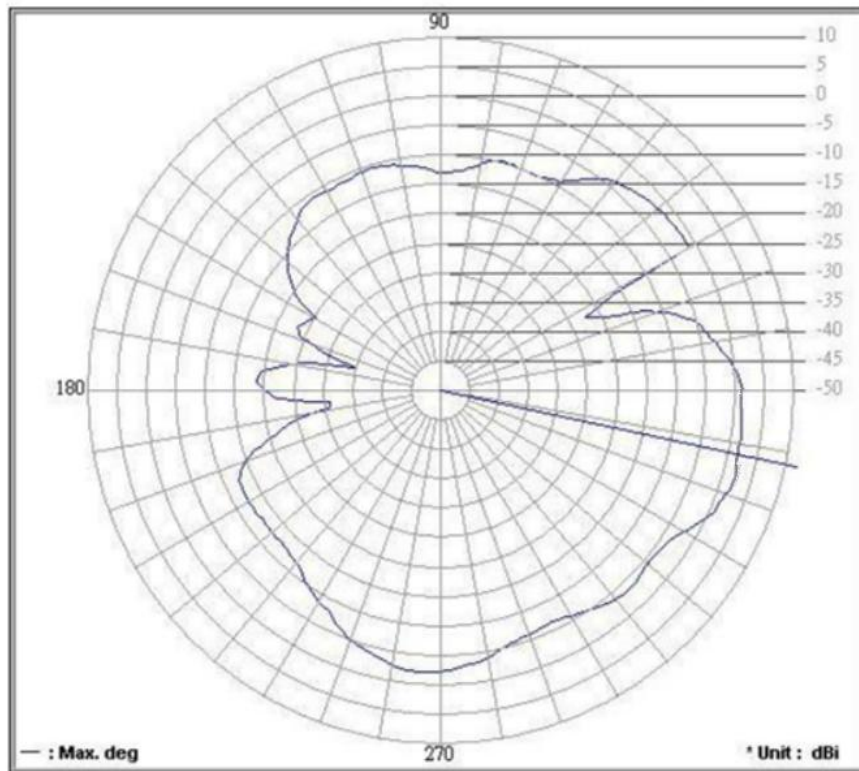
Maximum Gain (dB) : **-2.58**

Maximum Gain (degree) : **3**

Minimum Gain (dB) : **-39.35**

Minimum Gain (degree) : **213**

C:\Antenna Pattern V5.0\Graph\0818\08180023.png



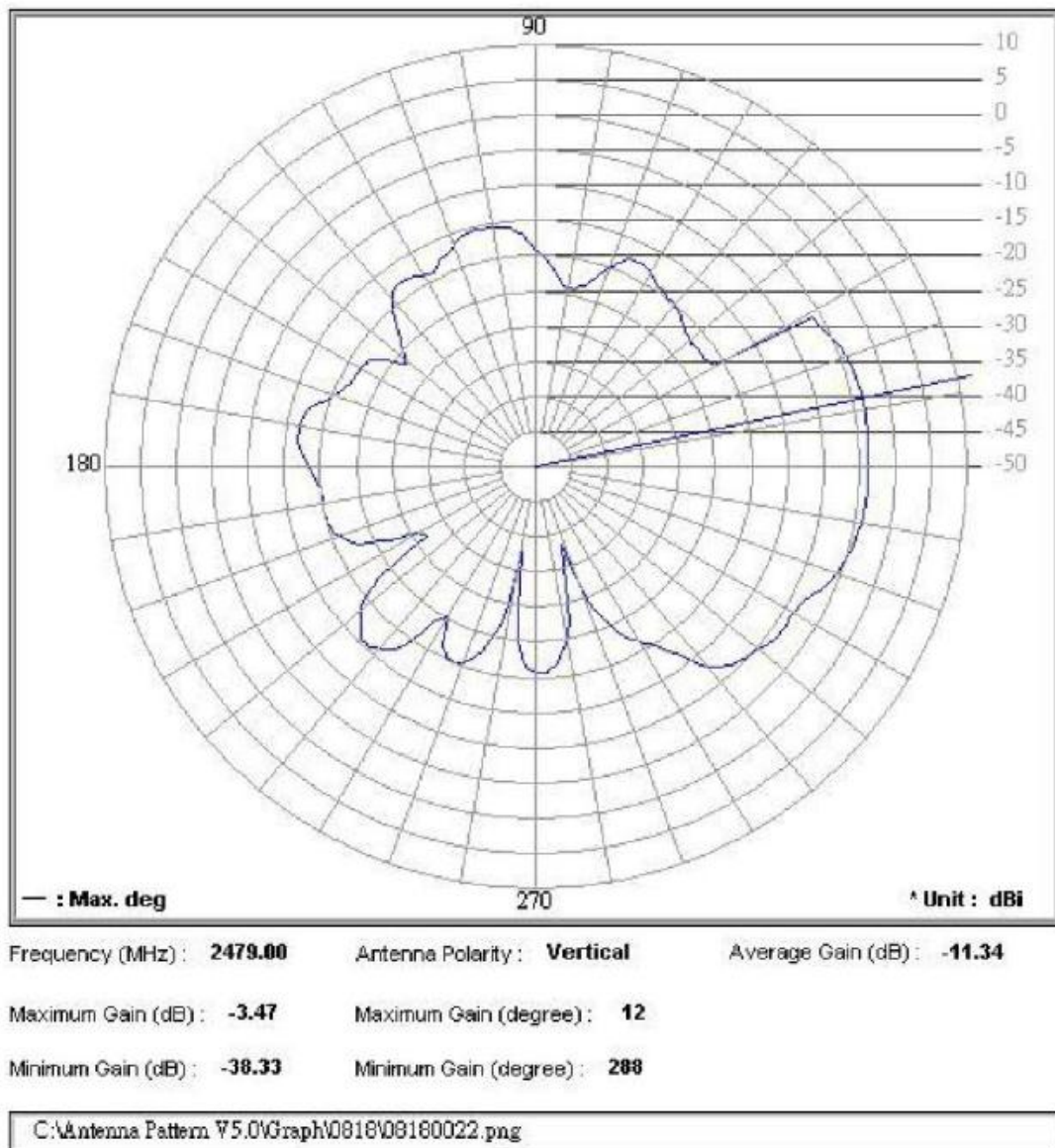
Frequency (MHz) : **2479.00** Antenna Polarity : **Horizontal** Average Gain (dB) : **-4.84**

Maximum Gain (dB) : **1.80** Maximum Gain (degree) : **348**

Minimum Gain (dB) : **-34.80** Minimum Gain (degree) : **165**

C:\Antenna Pattern V5.0\Graph\0818\08180021.png

3.2 Vertical



Manufacturer:ShenZhen Besteye Tech Co.,LTD

Address: 4F,Building B, U Plus R&D Center,No.1,Gushu 1st Road,Xixiang Street, Bao'an

District, Shenzhen,P.R.C