

PHILIPS

Headphones TAT1120



User manual

Register your product and get support at
www.philips.com/support

1	important safety instructions	2
	General information on hearing safety	2
2	Open Wireless Earphones Packaging Box	3
	Items Other Devices	3
	Overview of Open Wireless Earphones	3
		4
3	Getting Started	5
	For the first time, pairing headphone with Bluetooth devices and pairing them with another Bluetooth device for battery charging and wearing	5
		6
		6
		7
4	Using Headphones	8
	Connect to Bluetooth device	8
	Power on/off	8
	Manage music and calls	8
	Voice assistant	9
	Headphone LED indicator status	9
	Charging case LED indicator status	9
5	Reset Earphones	10
6	Technical Data	11
7	notice	12
	Declaration of Conformity	12
	Disposal of old products and batteries	12
	Dismantling the integrated battery	12
	Compliant with Electromagnetic Field (EMF) regulations	13
	Environmental Information	13
	Compliance Statement	13
8	trademark	15
9	Frequently Asked Questions and Answers	16

1 Important safety instructions

Hearing safety



Child danger

·To avoid hearing loss, the time spent using headphones at high volume should be limited, and the volume should be set to a safe level. The louder the volume, the shorter the safe listening time.

Please ensure to follow the following guidelines when using headphones:

- Listen at a reasonable volume within a reasonable time
- After adapting to hearing, be careful not to continuously increase the volume
- Do not turn the volume too high to hear the surrounding sounds

Caution should be exercised or the use of headphones should be temporarily suspended in situations of potential danger.

- Excessive sound pressure in headphones can cause hearing loss.

It is recommended not to wear headphones on both ears while driving. This may be considered illegal in some areas.

For safety reasons, when driving or in other potentially dangerous environments, you should avoid letting music or phone calls distract your attention.

To avoid damage or malfunction:



warn

- Do not place headphones in high temperature environments
- Do not drop the earphones
- Do not place the headphones in a dripping or splashing environment (Refer to the IP rating of a specific product)

Do not immerse the headphones in water

Do not charge the earphones when the interface or socket is damp.

Do not use any cleaning agents containing alcohol, ammonia, benzene, or abrasives to clean products.

If necessary, use a soft cloth to clean the product. Use a small amount of water or diluted neutral soapy water to wet the cloth for cleaning.

Do not place integrated batteries in high temperature environments such as direct sunlight, open flames, or similar environments.

- Improper battery replacement can pose a risk of explosion. Only use batteries of the same type for replacement.

To achieve a specific IP level, the charging port cover must be put into a fire or hot oven, or mechanically crushing or cutting it, can cause an explosion.

Placing batteries in extremely high temperature environments can cause explosions or leakage of flammable liquids or gases.

Placing the battery in an extremely low-pressure environment may result in explosion or leakage of flammable liquids or gases.

- To avoid the risk of fire, the equipment can only be supplied by an external power source, and its output should comply with PSI (output capacity less than 15W).

Operation and storage temperature and humidity

- Store the product in an environment with a temperature between -4°F and 5 (122 °F) and a maximum relative humidity of 9.

Operate the product in an environment with a temperature between 0 and 4 (113 °F) and a maximum relative humidity of 9.

High or low temperature environments may shorten battery life.

Replacing batteries with incorrect models may seriously damage headphones and batteries (such as certain types of lithium batteries).

2 True wireless headphones



Quick Start Guide

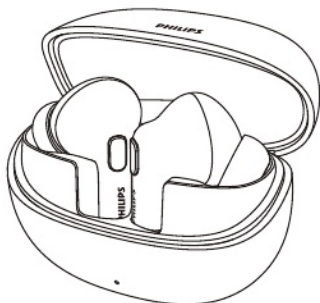


Guarantee



Safety Manual

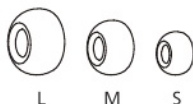
Items inside the packaging box



Philips True Wireless
Headphones Philips
TAT1120



Type-C charging cable (for charging only)

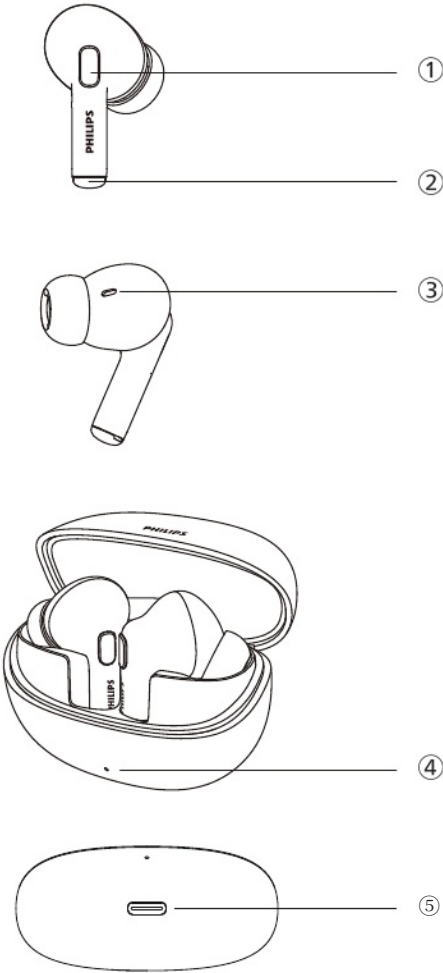


Ear cap

OTHER EQUIPMENT

A phone or device that supports Bluetooth and is compatible with headphones (such as laptops, tablets, Bluetooth adapters, MP3 players, etc.)

Overview of True Wireless Headphones



- ① Multi-functional touch keys
- ② Charging contact points
- ③ Sound vent
- ④ LED indicator light (charging case)
- ⑤ USB charging port

3. Beginner's Guide to Use

headset

Put the earphones into the charging case, close the lid of the charging case, and the earphones will start charging.

Battery charging

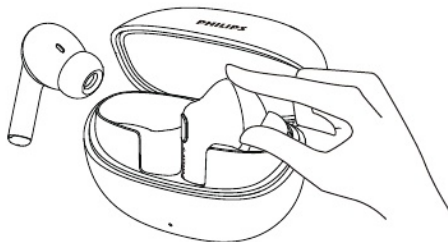
three pay attention to

· Before using the headphones, please place them in the charging case and charge the battery for 2 hours to ensure optimal battery power and lifespan

· Only use the original USB-C charging cable to avoid any damage

· After ending the call, recharge. Connect the earphones to the charger, and the earphones will automatically shut down

· If headphones are not used for a long time, the rechargeable battery's storage capacity will be insufficient. To avoid such losses, please fully charge the battery at least once every three months

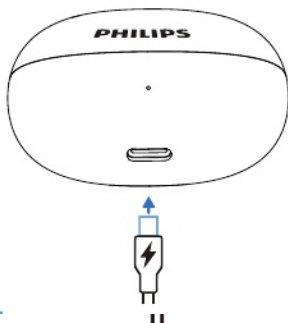


rice prompt

· Usually, it takes 2 hours to fully charge headphones or charging cases through a USB cable

Charging case

Connect one end of the USB-C charging cable to the charging case and the other end to the power source



* prompt

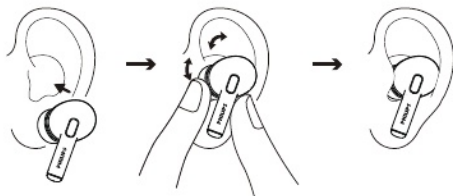
- The charging case is used as a portable backup battery to charge the earphones. After the charging case is fully charged, it can fully charge the earphones twice

Wearing method

Inserting headphones

Check the left and right orientation of the headphones

Insert the headphones into your ear and gently twist them until they fit securely



Pairing headphones with Bluetooth devices for the first time

Make sure the headphones are fully charged and the power is turned off.

2. Open the upper cover of the charging case, and the earphones will power on automatically.

→ The main ear flashes blue and white alternately, and the secondary ear goes out

The earphones are now in pairing mode and can be paired with Bluetooth devices such as mobile phones

3. Turn on the Bluetooth function of the Bluetooth device

Pair the earphones with Bluetooth devices Please refer to the user manual of the Bluetooth device

注意

- After the headphones are turned on, if they cannot find any previously connected Bluetooth devices, they will automatically enter pairing mode approximately 15 seconds later.

The following example demonstrates how to pair headphones with Bluetooth devices

1 Turn on the Bluetooth function of the Bluetooth device and select

Philips TAT1120.

2 If prompted to enter the headphone password, please enter "(4 zeros)". For Bluetooth devices with Bluetooth 3.0 or higher versions, no password is required.



Philips TAT1120

Single earphone (mono mode)

Remove the left or right earphones from the charging case for mono mode. The headphones will automatically turn on.

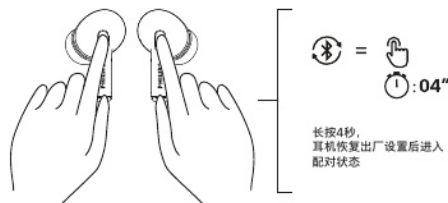


pay attention to

- Take out the second earphone from the charging case, and the two earphones will automatically pair.

Pair with another Bluetooth device

If you want to pair another device with the headphones, simply press and hold the multi-function keys of both headphones simultaneously for 4 seconds to enter the pairing mode. Then put them back in the charging case and take them out again. Finally, pair them with the second device in the usual way.



pay attention to

- The headphone memory can store up to 4 devices. If the device attempting to pair exceeds 4 units, the earliest paired device will be replaced by the latest paired device.

Full off.

4 Use headphones

Connect to Bluetooth device

- 1 Turn on the Bluetooth function of the Bluetooth device.
- 2 Open the charging case lid:

The headphones will search for the last connected Bluetooth device and automatically reconnect to it. If the last connected device is unavailable, the headphones will automatically enter pairing mode. Users can discover the headphones on their mobile phones and then select to connect to them.

Power on / Power off

Task	Multifunction key	Operation
Turn on the headphones.		Open the upper cover of the charging case and the earphones will power on automatically.
Turn off the headphones.		Put the earphones back into the charging case, close the lid, and the earphones will power off.



提示

- When the headphones are not connected to any device outside the case and the auto-off time is reached, the headphones will automatically shut down.

Pairing prompt

- If you first turn on the headphones and then turn on the Bluetooth function of the Bluetooth device, then you must go to the Bluetooth menu of the device and manually connect the headphones to the Bluetooth device.



Note that in some Bluetooth devices, the earphones may not automatically connect. In this case, you must go to the Bluetooth menu of the device and manually connect the headphones to the Bluetooth device.

Manage music and calls

Music control

Task	Multifunction key	Operation
Play or pause the music	Left/Right Earphone	Double-click
Next song	Right earphone	Press three times.
Previous song	Left earphone	Press three times.
Increase volume +	Right earphone	Click once to add one space. Click and hold continuously to keep adding.
Adjust the volume - Left earphone		Click once to subtract one space. Keep holding down to continuously subtract.

Task	Multifunction key	Operation
Answer the phone.	Left/Right Earphone	Click
Hang up the phone.	Left/Right Earphone	Double-click
Reject a call	Left/Right Earphone	Double-click

Low latency mode

Task	Multifunction key	Operation
Enable low latency	Left/Right Earphone	Tap 4 times.
Turn off low latency	Left/Right Earphone	Tap 4 times.

Task	Multifunction key	Operation
Trigger the voice assistant (Siri/Google)	Left/Right earphone	Press and hold for 2 seconds.
Stop the voice assistant	Left/Right earphone	Press and hold for 1 second.

Charging case LED indicator status

When charging

Battery power / Electric charging indicator light

Battery level ≤ 30%	The orange LED is constantly on.
Battery level > 30%	The white LED is constantly on.
Fully charged	The LED light is off.
Low battery	The orange indicator light flashes slowly four times in each cycle, repeating four times.



- When the headphones are connected to the mobile device, the battery level of the headphones will be displayed on the mobile device.
- When both earphones are taken out within 4 seconds, the battery level will be displayed only once.

5 Reset Earphones

If you encounter any pairing or connection issues, you can follow the steps below to reset the headphones to factory settings.

1. Enter the Bluetooth menu of the Bluetooth device and go to the device list
Delete **Philips TAT1120**.
- 2 Turn off the Bluetooth function of the Bluetooth device.
3. Remove the earphones from the charging case (ensuring no Bluetooth device is connected). Simultaneously press and hold the L/R multifunction touch key for 4 seconds to clear all information.
- 5 Follow the instructions of 'Using Earphones – Connect Earphones to Bluetooth Devices'
Follow the steps in the operation.
- 6 Pair the earphones with your Bluetooth device and select **Philips TAT1120**.



提示

- The reset function is not available for a single earphone. It can only be triggered when both earphones are turned on and connected to each other.
- When the Bluetooth device is not connected, the reset function will not be triggered when connecting the Bluetooth device.

6 Technical Data

- Music playback time: 5 + 14 hours
- Headphone charging time: 1.5 hours
- Charging time for the charging case: 2 hours
- Both headphones are equipped with 35mAh lithium-ion batteries.
- The charging case is equipped with a 250mAh lithium-ion battery.
- Bluetooth version: 6.0
- Compatible Bluetooth configuration protocols:
 - HFP (Hands-Free Profile)
 - A2DP (Advanced Audio Distribution Profile)
 - AVRCP (Audio/Video Remote Control Profile)
- Supported audio decoding: SBC/ACC
- Frequency range: 2.402 - 2.480 GHz
- Transmitter power: < 10 dBm
- Operating distance: up to 10 meters at the maximum.
- Automatic power-off
- USB-C charging port
- Low battery warning: Please provide power supply.



pay attention to

• Specifications may change at any time without prior notice.

7 Notice

Declaration of Conformity

MMD Hong Kong Holding Limited hereby declares that this product complies with the basic requirements and other relevant regulations of the RED Directive 2014/53/EU and the UK Radio Equipment Regulation SI2017No1206. You can log in to www.philips.com/support to find the conformity statement.

Disposal of old products and batteries



The product is designed and manufactured with high-quality materials and components that can be recycled and reused.



This symbol on the product indicates that it is regulated by European Directive 2012/19/EU.

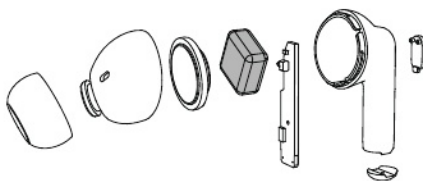


This symbol indicates that this product contains a built-in rechargeable battery regulated by European Directive 2013/56/EU, which cannot be disposed of together with ordinary household waste. We strongly recommend that you send the product to the official recycling point or Philips service center for professional personnel to remove the rechargeable battery. Please search for a specialized recycling system locally applicable to electrical and electronic products, as well as rechargeable batteries. Please comply with local regulations and do not dispose of this product and rechargeable batteries together with regular household waste. Properly handling old products and rechargeable batteries will help avoid negative impacts on the environment and human health.

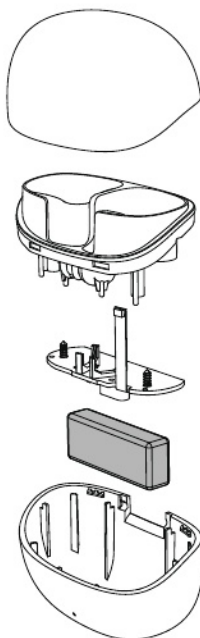
Dismantling the integrated battery

If your country/region does not have a collection/recycling system for electronic products, please remove and recycle batteries before disposing of headphones to protect the environment.

· Before removing the battery, ensure that the earphones are disconnected from the charging case.



· Before removing the battery, ensure that the charging case is disconnected from the USB charging cable.



Compliant with Electromagnetic Field (EMF) regulations

This product complies with all applicable standards and regulations regarding electromagnetic field exposure

Environmental Information

All unnecessary packaging has been omitted. We strive to make packaging easy to be divided into three materials: cardboard (box), foam plastic (buffer) and polyethylene (bag, protective foam board). Your system contains recyclable materials (if dismantled by a professional company). Please comply with local regulations regarding the handling of packaging materials, waste batteries, and old equipment.

Compliance Statement

This device complies with Part 15 of the FCC regulations. The operation must comply with the following two conditions:

1. This device will not cause harmful interference.
2. This device must be able to accept any interference received, including interference that may cause the device to malfunction.

FCC rules

This device has been tested and proven to comply with the restrictions on Class B digital devices in Part 15 of the FCC regulations. These restrictions aim to provide reasonable protection against harmful interference in residential facilities. This device generates, uses, and radiates radio frequency energy. If not installed and used in accordance with the instruction manual, it may cause harmful interference to radio communication.

However, it cannot be guaranteed that interference will not occur in specific facilities. If this device does indeed cause harmful interference to radio or television reception (which can be determined by turning the device off and on), users are encouraged to try one or more of the following measures to eliminate the interference:

Readjust or rearrange the receiving antenna.

Increase the distance between the device and the receiver.

Connect the device to a socket on a circuit different from the one connected to the receiver.

Consult with dealers or experienced radio/television technicians for assistance.

FCC Radiation Exposure Statement:

This equipment complies with FCC radiation exposure limits set forth for an uncontrolled environment. This equipment should be installed and operated with minimum distance 0cm between the radiator and your body.

Warning: Without explicit approval from the regulatory authority, users may lose device operation privileges if they make unauthorized changes or modifications to the product.

The license-free transmitter/receiver included in this device complies with the license-free RSS standard of the Department of Innovation, Science and Economic Development Canada. The operation must comply with the following two conditions: (1) This device will not cause interference. (2) This device must be able to accept any interference received, including interference that may cause the device to malfunction.

IC Radiation Exposure Statement: This device complies with Canada's radiation exposure restrictions for uncontrolled environments. Its transmitter shall not be placed in the same location or used together with any other antenna or transmitter. CAN ICES-003(B)/NMB-003(B)

Bluetooth

The Bluetooth text mark and logo are registered trademarks of Bluetooth SIG, Inc. MMDHong Kong Holding Limited has obtained permission for any use of this mark. Other trademarks and product names are the trademarks and product names of their respective owners.

Siri

Siri is a product of Apple Inc. in the United States and other countries/regions
Registered trademark.

Google

Google 和 Google Play 是 Google LLC.
The registered trademark.

9 Frequently Asked Questions and Answers

The Bluetooth earphones are connected to a phone that supports Bluetooth stereo, but music can only be played through the phone's speakers. Please refer to the user manual of your mobile phone. Choose to listen to music through headphones.

The Bluetooth earphones cannot be turned on.

The battery is low. Charge the earphones.
Bluetooth earphones cannot pair with Bluetooth devices. The Bluetooth function is not turned on. Before turning on the headphones, first turn on the Bluetooth device and enable the Bluetooth function on the device.

Unable to pair.

- Put the two earphones into the charging case.
- Ensure that the Bluetooth function of any previously connected Bluetooth devices has been disabled.
- Go to the Bluetooth device and remove **Philips TAT1120** from the Bluetooth list. Pair the earphones (see page 6 for the first time pairing earphones)

Pairing with Bluetooth devices.

The Bluetooth device cannot find the earphones.

- The headphones may have been connected to a previously paired device. Close

Close the connected device or move it out of the connection range. · The pairing may have been reset, or the earphones may have been previously paired with another device. Re pair the earphones with the Bluetooth device according to the instructions in the user manual. (See page 6)

Pairing headphones with Bluetooth devices for the first time.

The sound quality is too poor, you can hear popping sounds. · The Bluetooth device is out of the connection range. Shorten the distance between headphones and Bluetooth devices, or move away obstacles between the two. Charge the earphones.

When mobile phone transmission is slow, or when audio transmission is impossible, the sound quality is very poor. Ensure that your phone not only supports (mono) HFP, but also A2DP, and is compatible with BT4.0x (or higher version) (see technical data on page 11).



2025MMD Hong Kong Holding Limited. All rights specifications are subject to change at any time without prior notice. Philips and the Philips Shield logo are registered trademarks of Koninklijke Philips NV, and their use has been licensed. The product is manufactured and sold by MMD Hong Kong Holding Limited or its subsidiaries, and MMDHong Kong Holding Limited is the guarantor of this product. All other company and product names may be trademarks of their respective affiliated companies

