

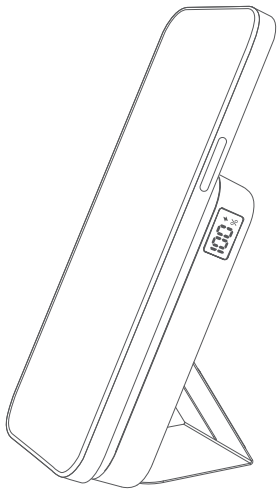
成品尺寸: 70mm X 105mm

材质: 105g哑粉纸

印刷颜色: 四色印刷

装订方式: 风琴六折页

# WIRELESS CHARGER



User Manual

Model:W15

This device complies with part 15 of the FCC Rules. Operation is subject to the following two conditions: (1) this device may not cause harmful interference, and (2) this device must accept any interference received, including interference that may cause undesired operation.

Any changes or modifications not expressly approved by the party responsible for compliance could void the user's authority to operate the equipment.

NOTE: This equipment has been tested and found to comply with the limits for a Class B digital device, pursuant to Part 15 of the FCC Rules. These limits are designed to provide reasonable protection against harmful interference in a residential installation. This equipment generates, uses and can radiate radio frequency energy and, if not installed and used in accordance with the instructions, may cause harmful interference to radio communications. However, there is no guarantee that interference will not occur in a particular installation.

If this equipment does cause harmful interference to radio or television reception, which can be determined by turning the equipment off and on, the user is encouraged to try to correct the interference by one or more of the following measures:

- Reorient or relocate the receiving antenna.
- Increase the separation between the equipment and receiver.
- Connect the equipment into an outlet on a circuit different from that to which the receiver is connected.
- Consult the dealer or an experienced radio/TV technician for help.

The device has been evaluated to meet general RF exposure requirement. The device can be used in portable exposure condition without restriction

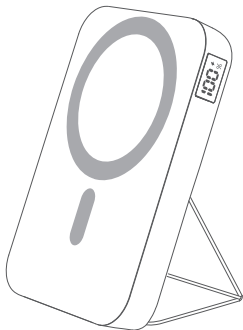


大喜門  
株式會社

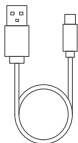
Recycle  
with  
Lion

MADE IN CHINA

# Packing List



Power Bank



Type-C Charging Cable

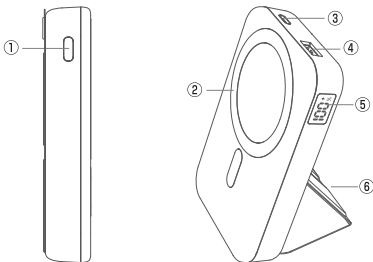


User Manual

## Package Contents:

- A. Power Bank x 1
- B. Type-C Charging Cable x 1
- C. User Manual x 1

# Product Introduction

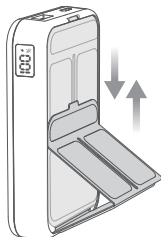


- ① Power Button
- ② Wireless Charging Surface
- ③ Type-C Input/Output

- ④ USB A Output
- ⑤ Power Display
- ⑥ Stand

## Note :

The three-section stand is foldable, magnetic and attaches to the back of the charger. When using it, gently pull it down from the top and fold it to the correct angle as shown in the picture, then attach the first section of the stand to the rectangular icon on the back of the charger.



# Specifications

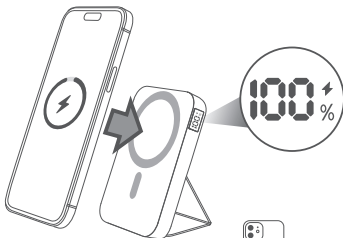
Model:	W15
Capacity:	10000mAh
Power:	38.5Wh/3.85V
TYPE-C Input:	5V==3A 9V==2A 12V==1.5A
TYPE-C Output:	5V==3A 9V==2.2A 12V==1.66A
USB A Output:	5V==3A 9V==2.22A 12V==1.67A
Wireless Output:	15W (Max)

# How to Charge

## Charging Your Devices

**Note:** Our wireless charger supports both wireless and wired charging for your devices.

### 1. Wireless Charging



The wireless charging does not compatible with the non-magnetic phone case.



Magnetic Cases



Non-magnetic

### Method:

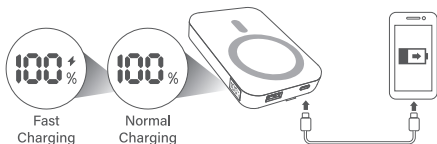
1. Press the power button once to activate the wireless fast charging mode. (The LED screen will show the current battery level of the wireless charger and the green lightning symbol.)
2. Place your phone on the wireless charger. For best results, make sure that your phone is centered on the circular icon of the wireless charger.

3. Remove the wireless charger or double-press the power button to end charging.

**Note:**

- \* The device to be charged needs to support wireless charging. (e.g. iPhone 8 and above)
- \* The magnetic suction function is only compatible with iPhone 12/13/14 Series and newer models.

## 2. Wired Charging



1. Use a compatible cable to charge your device by connecting the Type-C or USB-A output port of the wireless charger to your device.
2. When charging, the LED display will light up and digitally display the current battery level of the charger.
3. Remove the charging cable or double-click the power button to end charging.

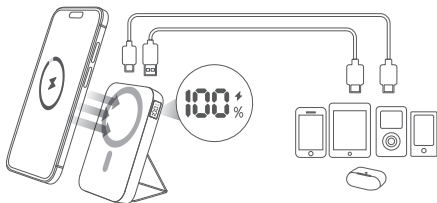
**Note:**

- \* To protect the battery life of the phone, when the phone is charged to about 80%, the wireless charger will automatically turn off the fast charging mode.



### 3. Simultaneous wired & wireless charging

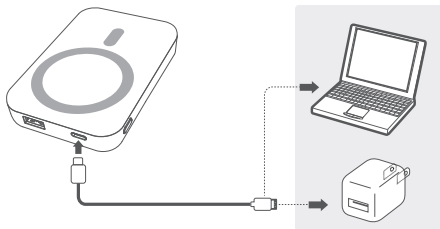
**Method:** Click the power button, place the phone on the wireless charger, and at the same time you can connect the wireless charger to another device with the charging cable to start charging for different devices.



#### **Note:**

- \* Our portable charger supports up to 3 devices charging at the same time.
- \* When multiple devices are charged at the same time, the product may heat up due to the increase power. Please don't worry, this is a normal phenomenon.
- \* When charging multiple devices at the same time, the output speed may slow down. To extend the life of the product, do not charge two devices at the same time if possible.

## Charging the Wireless Charger



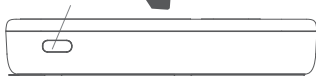
1. Use the Type-C charging cable (provided) to connect your computer (with power on) or an adapter (not provided) to your portable charger.
2. The LED display will light up when charging. The **188** will display first and disappear. Later the digit flashes to show that the portable charger is charging.
3. Low battery reminder: When the battery power of the wireless charger is below 10%, please charge it in time.

## Key Function of the Button & LED Display

### Power Button

1. Click the power button once to turn on the product.

Power Button  Click Once



2. Click the power button twice to turn off the product.

Power Button  Click Twice



### LED Display



1. **100%** : the static digit Indicates remaining power.
2. **⚡** : the green lightning symbol indicates fast charging mode.
3. **188** : Indicates high-temp protection (appears 1s when charging and then goes out).
4. **99%** : the flashing digit indicates that the wireless charger is being charged.

## Warm Tips for Safe Use

When using this product, basic precautions should always be followed, including the following:

1. Upon initial use or after a long time of storage, charge the wireless charger once. The unit's full performance is achieved only after 2 or 3 completed charges and discharge cycles.
  2. Please charge the product every 3 months when it's been idle status.
  3. Don't use rough chemicals, like soap or cleanser to scrub it.
  4. To reduce the risk of injury, close supervision is necessary when children are nearby.
- \* Keep the product dry and ventilated. Do not put the product in the water.
  - \* Do not heat the product or put it near the fire. Never store or use this product in temperatures below 0°C or above 45°C. If the wireless charger is found to have hidden dangers or other problems, immediately stop using it.
  - \* Do not use the portable charger if it is damaged or modified. Damaged or modified batteries may have unpredictable situations, resulting in fire, explosion, or risk of injury.
  - \* Do not disassemble the portable charger. Take it to a qualified service person when repair is required. Incorrect reassembly may result in a risk of fire or injury to persons.
  - \* Do not use the portable charger in excess of its output rating. Overload outputs above the rating may result in a risk of fire or injury to persons.
  - \* Turn off or disconnect the portable charger when it is not in use.
  - \* Do not charge the portable charger for more than 10 hours and do not leave it unattended.

## Q & A

**Q:** Fail to charge the wireless charger.

- A:** (1) There is incorrect connection between the wireless charger and the AC charger. If this happens, please check the connection.
- (2) The wireless charger doesn't work with the AC adapter. Please change another compatible adapter.
- (3) If the first two possibilities are ruled out, there might be something wrong with the internal circuit. Please contact us through Amazon.

**Q:** There is no response to the device being charged.

- A:** (1) There is insufficient power of the wireless charger, please charge the product first. In wireless charging mode, the power button isn't turned on. Please click once the power button to start charging.
- (2) In wired charging mode, there is incorrect connection between the wireless charger and your device. If this happens, please check the connection.
- (3) The charging cable might be damaged. Please change a useful cable.
- (4) Using the charging cable to connect the output port to input port by mistake will trigger short-circuit protection. Please disconnect the cable and recharge your device again.
- (5) There might be something wrong with the internal circuit. Please contact us through Amazon.