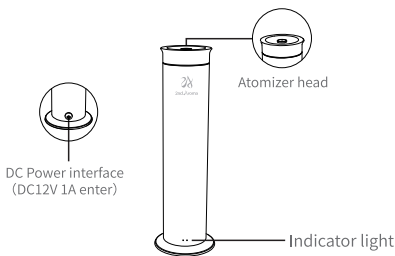


2NDAROMA-HT001说明书 荷包折 大标题页作为封面 尺寸:80*130mm

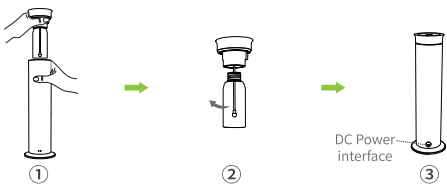
QUICK START

First of all, pull out the atomizer head upwards and add an appropriate amount of essential oil put the atomizer back, aligning it with the groove, and then insert the power supply in the back of the device. The device starts at the default [L3] level, and the air pump "starts for 16 seconds and stops for 240 seconds" to work all day. The remote control can be used to choose different levels and timings to adjust the fragrance intensity. (Connect to the APP for more intuitive Settings)

COMPONENT DESCRIPTION OF THE DEVICE



DEVICE INSTALLATION

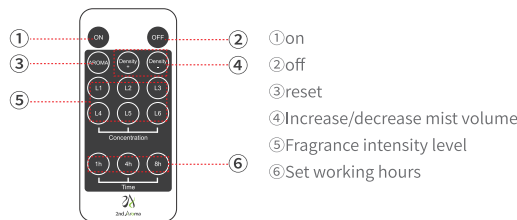


- ① Hold the lower part of the device with one hand, and hold the atomizer head (connected with the oil bottle) with one hand to pull it out upward.
- ② Screw out the oil bottle counterclockwise and add an appropriate amount of essential oil especially for scent diffusers.
- ③ Put the atomizer back, aligning it with the groove and connect the device to the power supply. You then can use the remote to set different working levels and timings.

INDICATOR LIGHT DESCRIPTION

- Blue power indicator: Lights up to indicate that the device is in operation, and goes out when power is cut or switched off.
- Green air pump operating indicator: Lights up to indicate that the air pump is working and goes out when the air pump is paused.
- Red Bluetooth/Remote Control Indicator: The red indicator light flashes when you press the buttons on the remote control, or when the APP has settings to update.

REMOTE CONTROL



REMOTE CONTROL PAIRING

For the first-time pairing, or the remote control needs to be replaced due to the loss of the remote control and other reasons, the remote control signal can be matched with the device control the device: disconnect the power first, and turn ON the power while holding down the ON button, the red indicator flashes, indicating that the device and the remote control matching (that is, pairing) is completed.

REMOTE CONTROL OPERATING SETTINGS

- The remote control can set the fragrance intensity, mist volume, working time and power on/off, which is convenient for use and increases the life of the equipment. When you press the remote control, the device beeps once (the Bluetooth indicator flashes for a few seconds and then goes out), after which you can continue to use the remote control:
- [ON] button: Turn on the scent dispenser; remote control pairing.
 - [OFF] button: Turn off the scent dispenser.
 - [AROMA] button: In the working state, press to restore the factory settings.
 - [Density -] button: in the working state, reduce the mist volume every time you press.
 - [Density +] button: In the working condition, press to increase the mist volume.

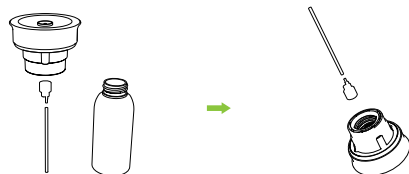
● In the working state, press the level buttons [L1] [L2] [L3] [L4] [L5] [L6] to adjust the fragrance intensity:

[L1]	Air pump is on for 16 seconds and off for 360 seconds(Covering 35m³)	[L4]	Air pump is on for 16 seconds and off for 180 seconds(Covering 140m³)
[L2]	Air pump is on for 16 seconds and off for 300 seconds(Covering 70m³)	[L5]	Air pump is on for 16 seconds and off for 120 seconds(Covering 175m³)
[L3]	Air pump is on for 16 seconds and off for 240 seconds(Covering 105m³)	[L6]	Air pump is on for 16 seconds and off for 60 seconds(Covering 200m³)

The device defaults to L3 level: After power on, the air pump will start for 16 seconds and stop working for 240 seconds all day by default. Only when the timing buttons on the remote are pressed, it will start to work according to the custom setting timing.

- In working state, press the timer button to choose the working time level:
[1h]: After pressing, the device will work for one hour
[4h]: After pressing, the device will work for four hours
[8h]: After pressing, the device will work for eight hours

◇ CHANGE THE ATOMIZER CORE



① Pull out the suction tube from the main body of the atomizer head and remove the original atomizer core.

② Insert the new atomizer core into the atomizer head, and then insert the suction pipe into the new atomizer core. (pay attention to the position of the circular hole)

◇ PRODUCT PARAMETER

• model: 2NDAROMA-HM001

• size: 98×98×313mm

• weight: 0.97kg

• voltage: DC 12V

• oil capacity: 100ml

• power: 2.5W

• coverage: 200m³

◇ WHAT'S INCLUDED

Equipment×1, Power adapter×1, 100ml Essential oil bottle×1, atomizer core×1, Funnel×1, Seal×1, Remote control×1, User Manual×1

◇ EQUIPMENT MAINTENANCE

If the equipment is not used for a long time, 95% industrial alcohol should be added into the oil bottle to clean the nozzle and other parts inside the equipment.

Tip: Maintain the equipment with 95% industrial alcohol at least every 1-2 months.

Specific operation: add 95% industrial alcohol into the empty bottle, turn on the equipment and run for 10-15 minutes. Then turn off the equipment, pour the alcohol, and screw back the bottle to the machine.

◇ WARRANTY INFORMATION

1. The Warranty is suitable for new machine but not resold or second hand products.
2. Within 12 months after purchase date, Warranty is offered for all qualified machines. During warranty, we will offer repair services and the free parts. Essential oil is not included.
3. The warranty card & purchase Invoice are needed if after service is required. Please contact with us within warranty if any problems.
4. The following is not for free warranty service:
 - ① Damage & problems caused by Accidents & Fire.
 - ② Not used properly and wrong operation.
 - ③ Repaired by non-professionals, causing some parts damaged.
 - ④ Damaged during transportation.
 - ⑤ Without our warranty card.
 - ⑥ Without proper cleaning for a long time
 - ⑦ The machine is overworked.
 - ⑧ Machines & Parts not from us.
 - ⑨ Machines not purchased from official channels.
 - ⑩ Send the machines back without permit from the manufacturer.

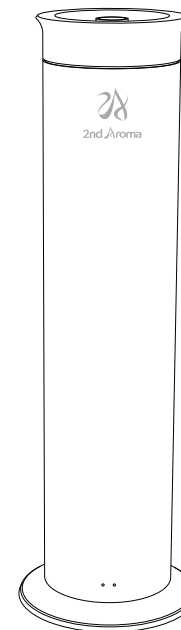
◇ WARNING

- This machine does not support humidification function, please do not add pure water. Otherwise, the machine may be damaged.
- When the equipment is loaded with essential oil, it must be kept upright and upward, and cannot be inverted or tilted, otherwise the essential oil will leak and damage the internal parts of the equipment
- During transportation of the device, the bottle must be emptied to avoid leakage of essential oils and damage to the device.
- Do not use overloaded power sockets, power cords and broken power plugs, otherwise your safety may be jeopardized and fire may be caused; Do not damage the lithium battery, otherwise it may lead to danger.
- Please do not open the machine by yourself. If problems, please contact us promptly!

After-sales Email: the2ndAroma@outlook.com

We supply warranty within 12 months after purchase date for all qualified machines. During warranty, we will offer repair services and the free parts, essential oil not included. Once the warranty period expires, repair services will be charged, please read the detailed items from the below warranty list.

Smart fragrance equipment User Manual



Please read the manual carefully before use and keep it properly

This device complies with part 15 of the FCC Rules. Operation is subject to the following two conditions: (1) This device may not cause harmful interference, and (2) this device must accept any interference received, including interference that may cause undesired operation.

Any Changes or modifications not expressly approved by the party responsible for compliance could void the user's authority to operate the equipment.

Note: This equipment has been tested and found to comply with the limits for a Class B digital device, pursuant to part 15 of the FCC Rules. These limits are designed to provide reasonable protection against harmful interference in a residential installation. This equipment generates uses and can radiate radio frequency energy and, if not installed and used in accordance with the instructions, may cause harmful interference to radio communications. However, there is no guarantee that interference will not occur in a particular installation. If this equipment does cause harmful interference to radio or television reception, which can be determined by turning the equipment off and on, the user is encouraged to try to correct the interference by one or more of the following measures:

- Reorient or relocate the receiving antenna.
- Increase the separation between the equipment and receiver.
- Connect the equipment into an outlet on a circuit different from that to which the receiver is connected.
- Consult the dealer or an experienced radio/TV technician for help.

FCC Radiation Exposure statement

The device has been evaluatec to meel general RF exposure requirement. The device can be used in portable exposure condition without restriction.