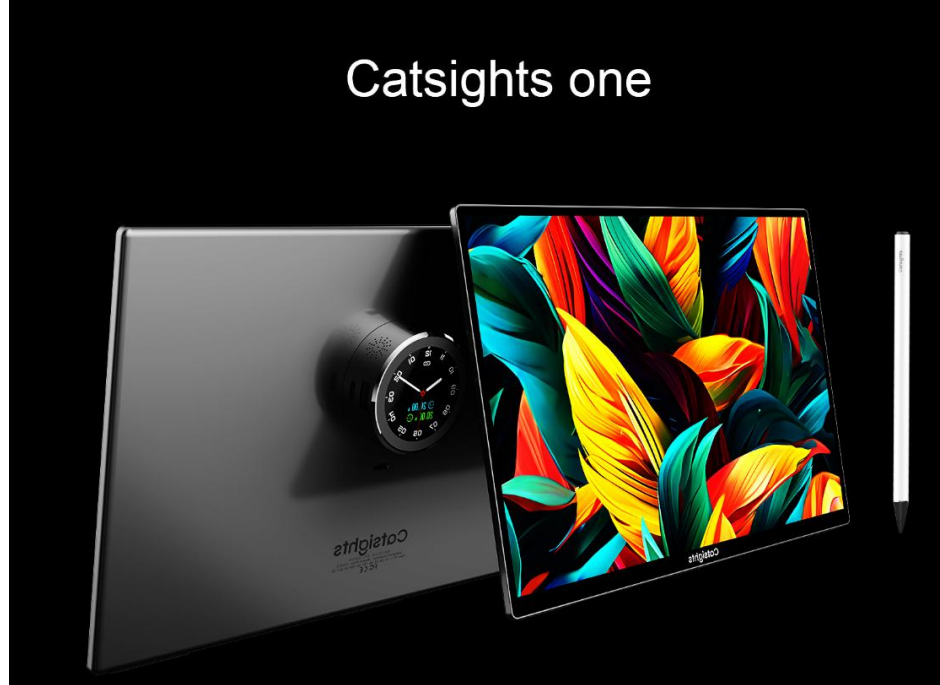


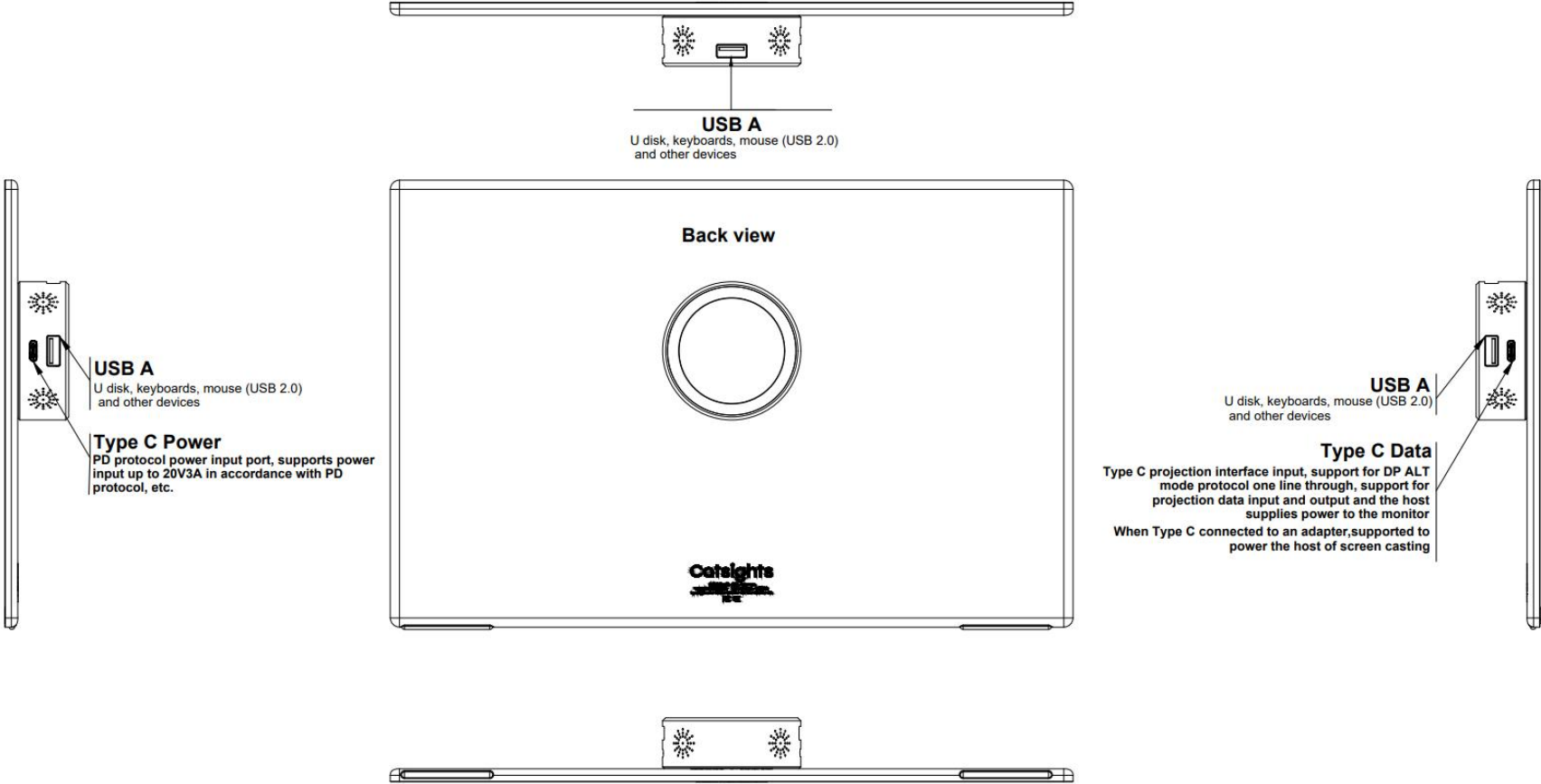
Catsights one



Portable monitor product instructions

CJ01133

Interface Description



Standby clock



When the host of the screen has no signal and the Catsights display is charged, the time information will be displayed;
(The standby clock information is synchronized with the secondary screen clock information) .

Notes: Setting the calibration is set by the time setting of the circular secondary screen



Secondary Screen function

Use of the round secondary screen

Deputy screen



clock

Built-in clock chip, can set the update time; built-in button battery, power loss time does not stop(The standby (The interface may be updated with system upgrades)



power information

Main clock interface slide left into the power interface information
Displays the input and output current, voltage, and power information



Avatar interface

Swipe right on the main clock interface to enter the avatar interface. Support users to update a avatar through Catsights IOS APP and connect to the monitor through Bluetooth;
Note: Mobile phone APP is in development



set up

Main clock interface, scroll down to enter the settings page



Bluetooth Settings

Click the white "chain icon" to enter the Bluetooth QR code interface



Bluetooth Settings

The mobile phone can scan the QR code to connect to the Bluetooth

Use and setting of the touch screen

Use and setting of the touch screen

touch screen

**Windows10 Above version of free drive**

- Multi-touch control
- Capacitive stroke control and support 4096 pressure input



Mac OS

Install the Catsights touch APP touch is more silky

- Single point touch + mac gesture operation (consistent with Mac book touchpad gesture)
- Capacitive stroke control and support pressure input
- Without the APP, the mouse needs to move to the display area to respond to the touch



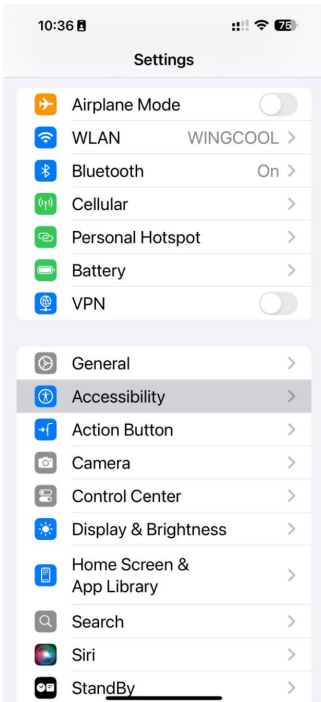
iOS

iPhone15 And above versions or iPad with M-series kernel devices

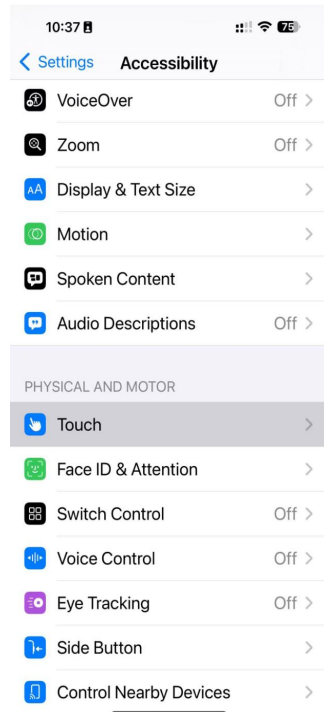
- You need to set it up in the Settings to achieve the display touch
- The corresponding device needs to be set in the display OSD menu to realize the display touch

iPhone Touch settings

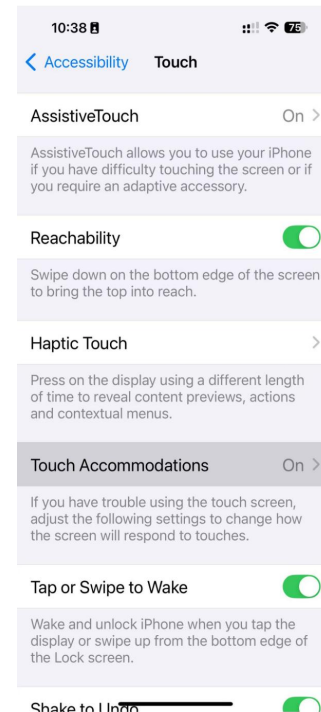
iPhone Mobile phone screen to the display, the touch display control the phone set method



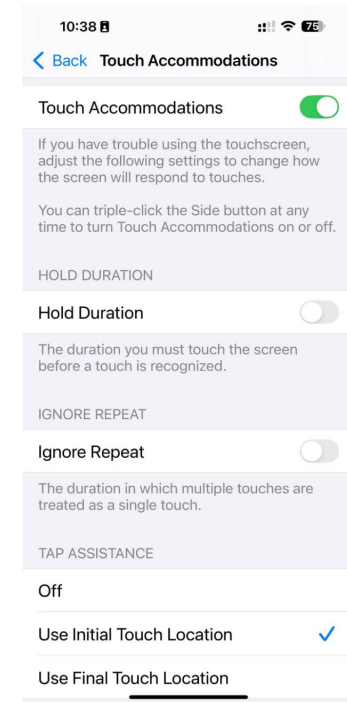
1 Settings- ->Accessibility



2 Select Touch



3 Select Touch Accommodations



1 Turn on the Touch Accommodations, Check "Use Initial Touch Location"

Notes:
The Ipad setup method is the same

OSD menu

OSD menu bring up and function introduction

OSD menu

**The two-finger sliding touch screen bring up the OSD menu**

In the designated area at the bottom right corner of the screen, two-finger swipe down will bring up the OSD menu; This area is in 1/4 horizontally and 1/3 vertically on the right side of the screen display area.



brightness adjustment

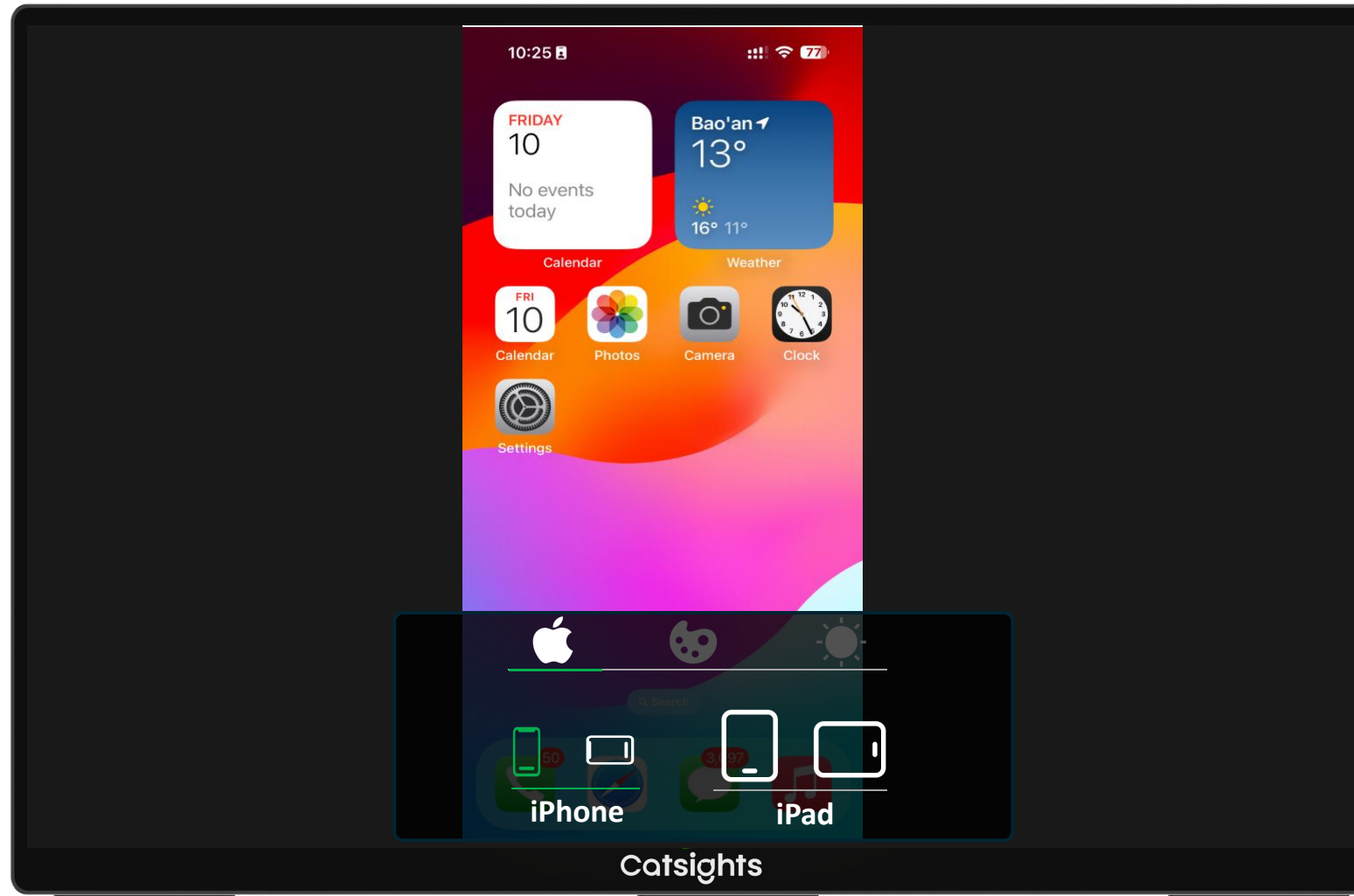
0~ 100, touch and drag directly



Color gamut pattern

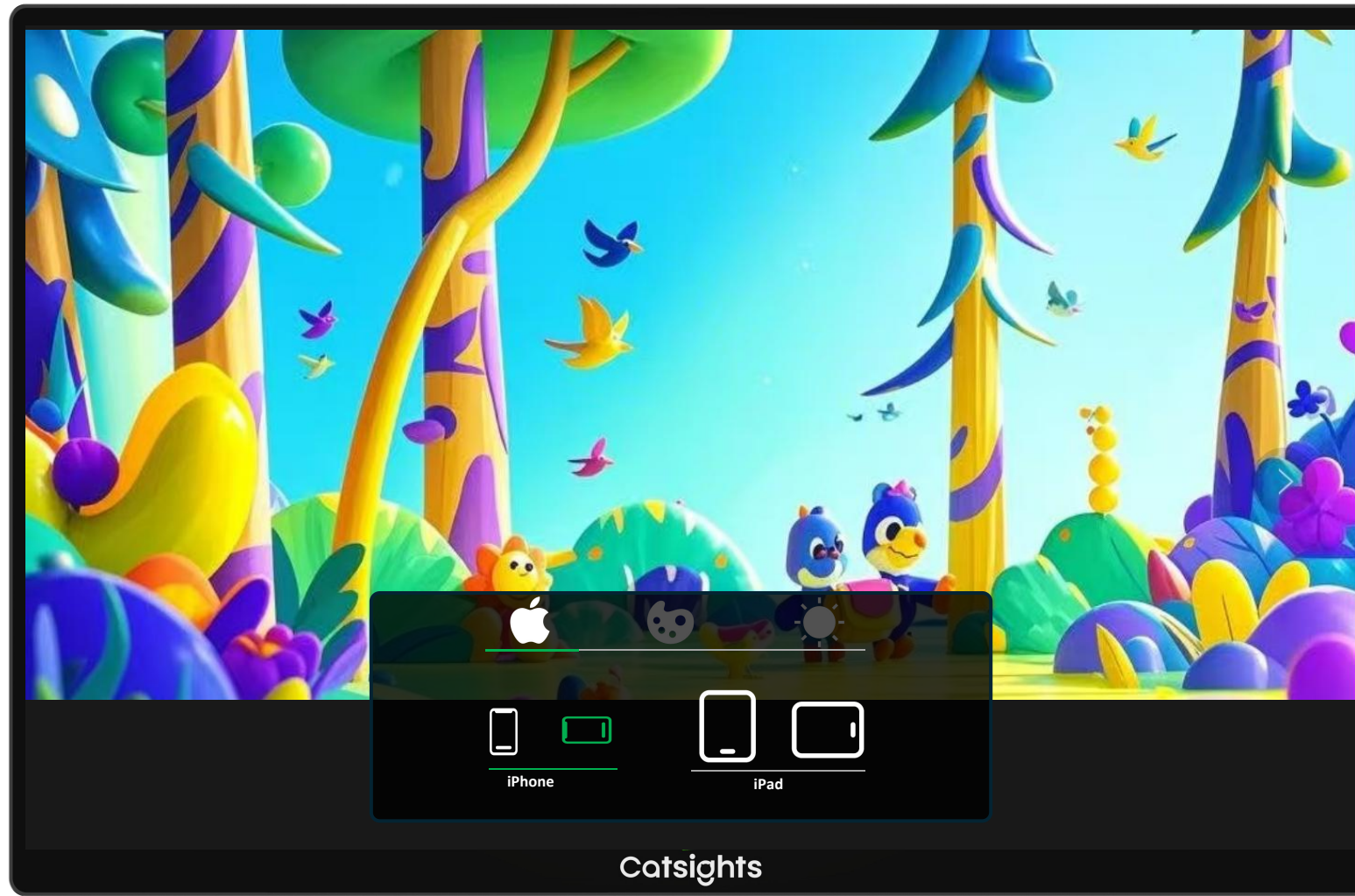
Touch The middle icon enters the three color gamut modes, and the user selects one of them according to the situation

OSD menu

**Touch support for the iPhone and iPad**

- The display supports screen touch for iPhone 15 and above iPad M series CPU cores.
- After the screen projection, the mobile phone and the ipad terminal need to open the accessibility in the Settings, detailed in the following will be introduced. The display also needs to be set up in the settings;
 1. After mobile phone projection, After the mobile phone is casted, if the extension screen selects vertical mode, the mobile phone is set to vertical mode in the setting;
 2. The iPad operates in the same way as the iPhone.

OSD menu

**Touch support for the iPhone and iPad**

- The display supports screen touch for iPhone 15 and above iPad M series CPU cores.
- After the screen projection, the mobile phone and the iPad terminal need to open the accessibility in the Settings, detailed in the following will be introduced. The display also needs to be set up in the settings;
 1. After screen projection, If you want to play the video in full screen, your iPhone need to select landscape mode.
 2. The iPad operates in the same way as the iPhone.

Mac APP Installation

The Mac system supports hand touch and capacitive active pen writing

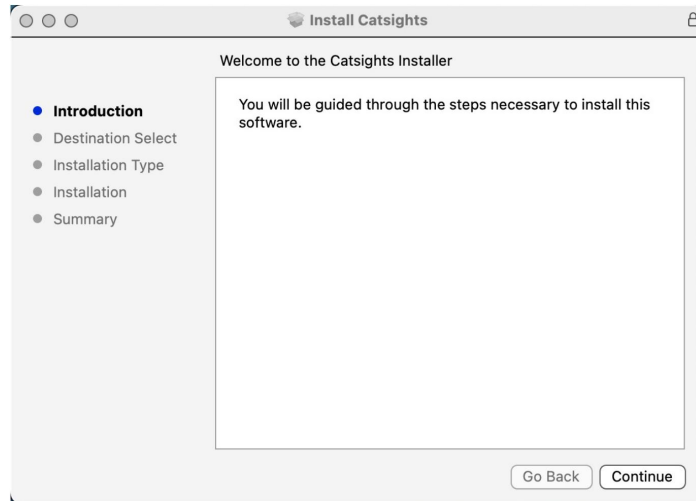
- Catsights 13.3 This display supports single point operation, double finger page turning, zoom in and out, like the Magic Trackpad function; it also supports capacitive active pen and pressure output. And can support third-party software such as Adobe for active pen adaptation
- Catsights In order to make the touch experience better, the Catsights touch APP Mac version was developed. After installation, it can be set to start automatically upon startup, and there is no need to turn it on separately in the future.

Method for installing the Catsights touch APP for the Mac system

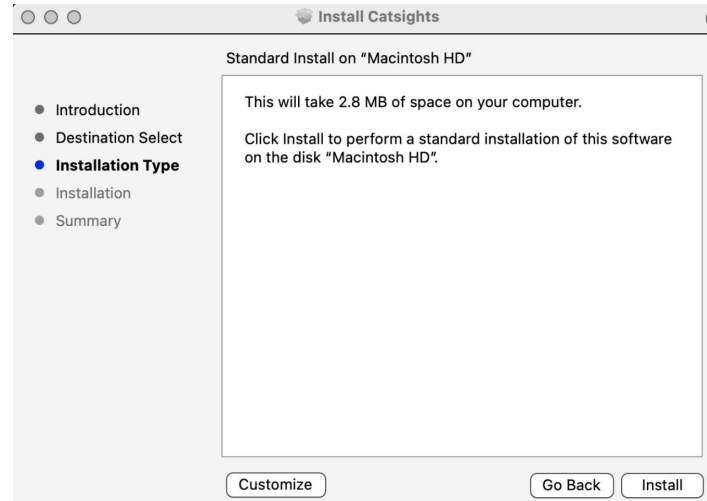
Mac APP Installation

the Catsights touch APP to install the package

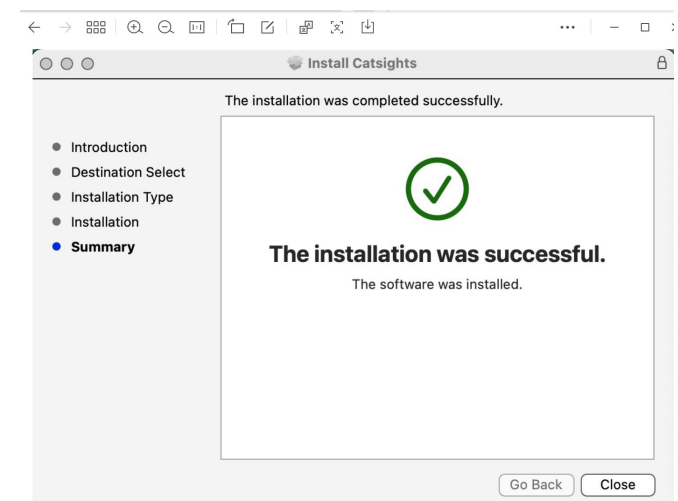
First Steps



the second step



the third step



After installation, the program run icon is in the top right corner of the top menu bar of the Mac desktop



Once the programme is installed, it will start automatically at startup and will not need to be restarted for future startups

Security instruction

Read these instructions carefully and keep this document for future reference. Follow all warnings and instructions marked on the product or in this manual.

WARNING: Use of operations or adjustments not specified in this document may result in electric shock, electrical and/or mechanical hazard.

WARNING: Connect the monitor and computer to a power strip with surge protection or an uninterruptible power supply. Before setting up the monitor, carefully read all the documentation included in the package. Do not use the monitor near water. Do not place the power cord or the product near a heat source. Do not place the product on an unstable desktop. The screen is fragile and may be damaged if dropped or struck by a sharp object. To avoid electric shock, do not disassemble the monitor or touch the inside of the monitor. Do not use a damaged power cord, plug, or loose power outlet. Do not operate and unplug the wall outlet if: This product is exposed to water or any liquid. The monitor case is damaged. The power cord or plug is damaged or frayed. The monitor does not operate normally after following the operating instructions or troubleshooting.

FCC Requirement

Any changes or modifications not expressly approved by the party responsible for compliance could void the user's authority to operate the equipment.

This device complies with Part 15 of the FCC Rules. Operation is subject to the following two conditions:

- (1) this device may not cause harmful interference, and
- (2) this device must accept any interference received, including interference that may cause undesired operation.

This transmitter must not be co-located or operating in conjunction with any other antenna or transmitter.

Note: This equipment has been tested and found to comply with the limits for a Class B digital device, pursuant to Part 15 of the FCC Rules. These limits are designed to provide reasonable protection against harmful interference in a residential installation. This equipment generates, uses, and can radiate radio frequency energy, and if not installed and used in accordance with the instructions, may cause harmful interference to radio communications. However, there is no guarantee that interference will not occur in a particular installation. If this equipment does cause harmful interference to radio or television reception, which can be determined by turning the equipment off and on, the user is encouraged to try to correct the interference by one or more of the following measures:

- Reorient or relocate the receiving antenna.
- Increase the separation between the equipment and receiver.
- Connect the equipment into an outlet on a circuit different from that to which the receiver is connected.
- Consult the dealer or an experienced radio/TV technician for help.

The device has been evaluated to meet general RF exposure requirement. The device can be used in portable exposure condition without restriction.

For more detailed information about catsights one, please obtain it on the official website or at the Amazon catsights brand store.

View e-label guidelines:

In the secondary screen of the portable monitor (as in Figure 1), slide down the screen, the screen appears as in Figure 2, click on setting (in Figure 2), the screen appears as in Figure 3, click on about (Figure 4) , slide down the screen, the FCC ID and FCC warning appear (Figure 5) .



Figure 1



Figure 2



Figure 3



Figure 4

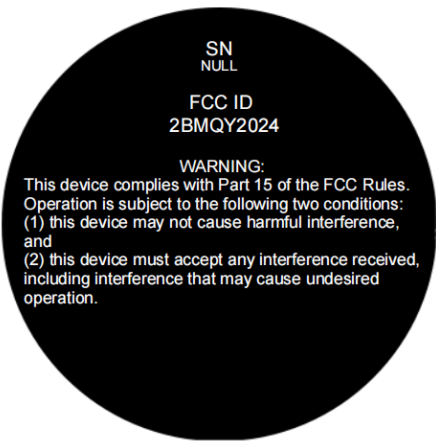


Figure 5

