

INSTRUCTION MANUAL

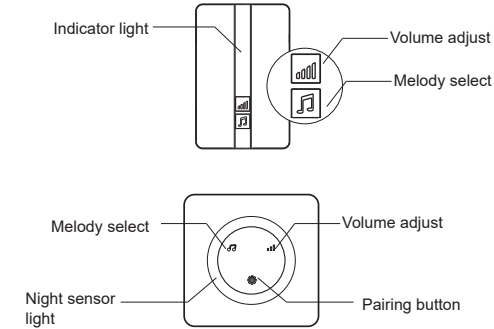
Self-Generating Power Wireless Doorbell



Thank you for choosing our product. Please read carefully the following instruction and keep them within reach.

FEATURES

Receiver:



Specifications

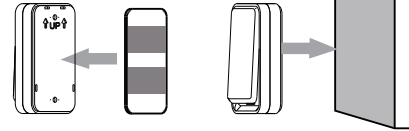
Voltage of receiver	110V-260V AC
Voltage of transmitter	self-generating power (no need battery)
Rating of waterproof	IP44
Power consumption	Transmitter < 20mA, Receiver < 140mA
Operating range	Over 150 meters in open air
Selectable ring tone	55 or 45 melodies
Volume range	0-90dB
Working frequency	433.92±1Mhz
Working temperature	-20℃ ~65℃

INSTALLATION

Notice before installation:

1. Non-professionals should not open or maintain it yourself to avoid damaging electronic components.
2. Please try to avoid installation the device under rain, over expose to sun or close to metal.
3. The actual remote control distance depends on the working environment as they are affected by interference.

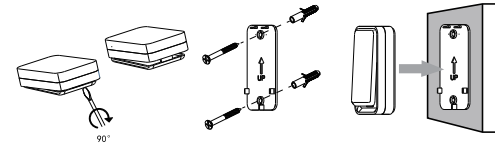
Method 1: paste it on wall



Step 1:
paste double-sided adhesive
sticker on the back shell
of transmitter

Step 2:
paste transmitter on wall

Method 2: screwed it on wall



Step 1:
use screw-driver to
open transmitter shell

Step 2:
use screw to fix the
shell on wall

Step 3:
transmitter buckle into
back shell

POTENTIAL PROBLEMS

1. Short operating range

Reason: There are too many obstacles like walls, metal doors between receiver and button.

Solution: Test operating range before installation and change location.

2. Receiver suddenly can't ring.

Reason 1: Plug of receiver is loose. Please re-plug your receiver.

Reason 2: Transmitter is not paired with receiver. Please follow below step for re-pairing doorbell.

How to Re-pair doorbell:

Step 1: Put the transmitter next to the Receiver.

Step 2: Press and hold volume button (or pairing button) in receiver and then continuous press transmitter button for 4~5 times.

Step 3: A very loud tone can be heard as confirmation on the receiver. The pairing should have done.

FCC Statement

Note: This equipment has been tested and found to comply with the limits for a Class B digital device, pursuant to part 15 of the FCC Rules. These limits are designed to provide reasonable protection against harmful interference in a residential installation. This equipment generates, uses and can radiate radio frequency energy and, if not installed and used in accordance with the instructions, may cause harmful interference to radio communications. However, there is no guarantee that interference will not occur in a particular installation. If this equipment does cause harmful interference to radio or television reception, which can be determined by turning the equipment off and on, the user is encouraged to try to correct the interference by one or more of the following measures:

- Reorient or relocate the receiving antenna.
- Increase the separation between the equipment and receiver.
- Connect the equipment into an outlet on a circuit different from that to which the receiver is connected.
- Consult the dealer or an experienced radio/TV technician for help.

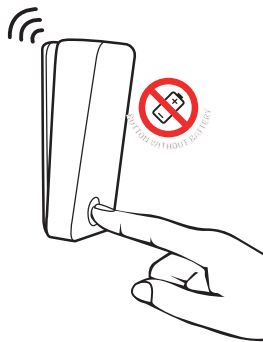
This device complies with part 15 of the FCC Rules. Operation is subject to the following two conditions: (1) This device may not cause harmful interference, and (2) this device must accept any interference received, including interference that may cause undesired operation.

Any changes or modifications not expressly approved by the party responsible for compliance could void the user's authority to operate the equipment.

The device has evaluated to meet general RF exposure requirement. The device can be used in portable exposure without restriction.

INSTRUCTION MANUAL

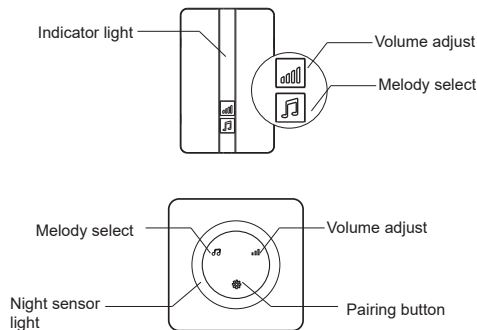
Self-Generating Power Wireless Doorbell



Thank you for choosing our product. Please read carefully the following instruction and keep them within reach.

FEATURES

Receiver:



Specifications

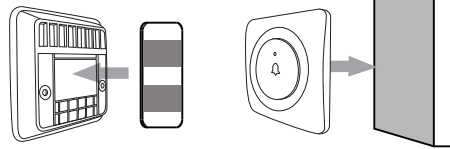
Voltage of receiver	110V-260V AC
Voltage of transmitter	self-generating power (no need battery)
Rating of waterproof	IP44
Power consumption	Transmitter < 20mA, Receiver < 140mA
Operating range	Over 150 meters in open air
Selectable ring tone	55 or 45 melodies
Volume range	0-90dB
Working frequency	433.92±1Mhz
Working temperature	-20℃ ~65℃

INSTALLATION

Notice before installation:

1. Non-professionals should not open or maintain it yourself to avoid damaging electronic components.
2. Please try to avoid installation the device under rain, over expose to sun or close to metal.
3. The actual remote control distance depends on the working environment as they are affected by interference.

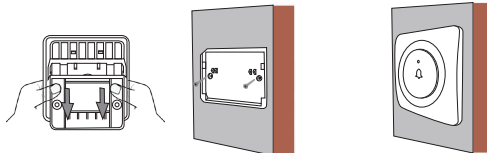
Method 1: paste it on wall



Step 1:
paste double-sided adhesive
sticker on the back shell
of transmitter

Step 2:
paste transmitter on wall

Method 2: screwed it on wall



Step 1:
push and open
transmitter shell.

Step 2:
use screw to fix the
shell on wall

Step 3:
transmitter buckle into
back shell

POTENTIAL PROBLEMS

1. Short operating range

Reason: There are too many obstacles like walls, metal doors between receiver and button.

Solution: Test operating range before installation and change location.

2. Receiver suddenly can't ring.

Reason 1: Plug of receiver is loose. Please re-plug your receiver.

Reason 2: Transmitter is not paired with receiver. Please follow below step for re-pairing doorbell.

How to Re-pair doorbell:

Step 1: Put the transmitter next to the Receiver.

Step 2: Press and hold volume button (or pairing button) in receiver and then continuous press transmitter button for 4~5 times.

Step 3: A very loud tone can be heard as confirmation on the receiver. The pairing should have done.