

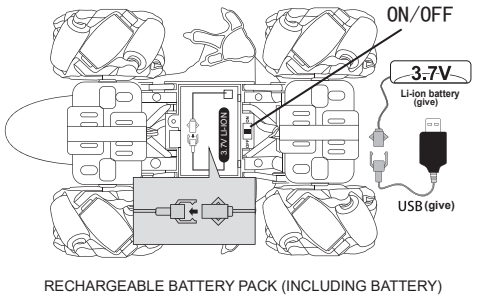
HOW TO CHARGE?

1. ONE NEW 3.7V BATTERY IS BUILT INTO THE R/C CAR. IT CAN ONLY BE USED AFTER CHARGING.
2. FIRST PLUG THE BATTERY WIRE PLUG INTO THE CHARGER PLUG ACCORDING TO THE CORRECT POLARITY CONNECTION, THEN PLUG THE CHARGER INTO THE SOCKET.
3. THE TIME REQUIRED FOR THE BATTERY TO BE FULLY CHARGED IS ABOUT 100-150 MINUTES. THE CHARGING PLUG IS WITH CHARGING INDICATOR. THE "RED LIGHT" IS ALWAYS "ON" DURING CHARGING AND THE INDICATOR WILL BE "OFF" WHEN FULLY CHARGED. PLEASE DO NOT OVERCHARGE IT AS THE EXCESSIVE CHARGING TIME WILL NOT INCREASE THE POWER.
4. CHECK REGULARLY THE TOYS, BATTERIES, WIRES AND PLUG OF CHARGING WIRE. IF THESE PARTS ARE DAMAGED, PLEASE DO STOP USING THEM UNTIL THESE PARTS ARE REPAIRED OR RENEWED.

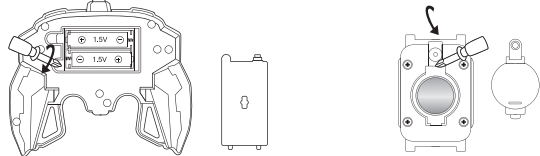
HOW TO LOAD THE BATTERY?

1. TRANSMITTER
1. OPEN THE BATTERY COVER OF THE TRANSMITTER AND LOAD 1.5V "AA" BATTERY AS THE CORRECT "+/-" POLARITY MARKED IN THE BATTERY COMPARTMENT OF THE TRANSMITTER.
2. CLOSE THE BATTERY COMPARTMENT AND WELL LOCK THE SCREWS.
2. WATCH REMOTE CONTROL
1. OPEN THE BATTERY COVER OF THE WATCH REMOTE, AND LOAD 1PC 3V "CR2032" BUTTON BATTERY AS "+/-" POLARITY MARKED IN BTHE BATTERY COMPARTMENT OF THE INDUCTION CONTROLLER.
2. CLOSE THE BATTERY COMPARTMENT AND LOCK THE SCREWS.
3. R/C CAR
1. USE A SCREWDRIVER TO UNSCREW IT ON THE BATTERY COVER AT THE BOTTOM OF THE CAR AND CONNECT THE BATTERY PLUG WIRE WITH THE POWER WIRE OF THE CAR BODY AS PER THE CORRECT "+/-" POLARITY;

2. CLOSE THE BATTERY COMPARTMENT AND WELL LOCK THE SCREWS.



RECHARGEABLE BATTERY PACK (INCLUDING BATTERY)



USE 2PC 1.5V BATTERIES (NOT INCLUDED) USE 1 PC 3V "CR2032" BUTTON BATTERIES (INCLUDED)

INSTRUCTION

THE BATTERY CHARGER USED IN THIS TOY SHOULD BE REMOVED FOR CHECKING SO AS TO PREVENT THE WIRES AND OTHER PARTS FROM BEING DAMAGED. IN CASE SOME PARTS ARE DAMAGED, IT SHOULD NOT BE USED UNTIL THE DAMAGE IS REPAIRED.

TROUBLESHOOTING:

FAULT SYMPTOMS	CAUSE OF FAILURE	TROUBLESHOOTING
THE CAR IS INOPERABLE	1. THE TRANSMITTER IS NOT CONNECTED OR THE SWITCH OF THE R/C CAR IS NOT SWITCHED ON. 2. THE TRANSMITTER OR R/C CAR IS NOT PROPERLY LOADED WITH BATTERY. 3. INSUFFICIENT POWER OF RECHARGEABLE BATTERY.	1. SWITCH ON THE R/C CAR AND RE-CONNECT THE TRANSMITTER. 2. CORRECTLY LOAD THE BATTERY INTO THE TRANSMITTER OR R/C CAR. 3. CHARGE THE RECHARGEABLE BATTERY.
THE CAR IS NOT CONTROLLED, THE REMOTE CONTROL DISTANCE IS CLOSE	1. THE POWER OF THE BATTERY OR RECHARGEABLE BATTERY IN THE TRANSMITTER IS INSUFFICIENT. 2. THERE MAY BE INTERFERENCE SOURCES NEAR THE SITE.	1. REPLACE THE BATTERY IN THE TRANSMITTER WITH A NEW BATTERY OR CHARGE THE RECHARGEABLE BATTERY. 2. CHANGE THE SITE.
ABNORMAL PROTECTION	1. WHEN THE FUNCTION OF THE R/C CAR IS BLOCKED BY EXTERNAL FORCE AND CANNOT COMPLETE THE FULL ACTING FUNCTION OR THE BATTERY IS SHORT-CIRCUITED.	1. SWITCH ON THE POWER AGAIN, THE R/C CAR STARTS SWITCH-OFF PROTECTION.

DEAR CONSUMERS

1. PLEASE BE CAREFUL NOT TO DAMAGE THE FURNITURE OR GLASS WHEN PLAYING THIS R/C CAR INDOORS.
2. PLEASE PLAY OUTDOORS IN A SAFE PLACE. PLEASE DO NOT PLAY THIS R/C CAR ON THE ROAD OR IN THE CROWD TO AVOID DANGER.
3. WHEN PLAYING THIS R/C CAR OUTDOOR, IF YOU HEAR THUNDER, PLEASE STOP PLAYING IMMEDIATELY.
4. WHEN THE WHEEL IS ROTATING, PLEASE DO NOT CLOSE YOUR HAND TO AVOID INJURY. NOR DO YOU GET YOUR HAIR OR CLOTHES INVOLVED.
5. PLEASE DO NOT DRIVE THIS R/C CAR TOWARDS PEOPLE.
6. PLEASE DO NOT THROW OR COLLIDE THIS R/C CAR.
7. WHEN PLACING THIS R/C CAR, PLEASE KEEP AWAY FROM THE FIRE SOURCE AND HIGH TEMPERATURE.
8. COMPLICATED ELECTRONIC CIRCUITS AND A LARGE NUMBER OF COMPONENTS ARE APPLIED ON THIS R/C CAR. PLEASE DO NOT DISASSEMBLE OR RE-EQUIP THE CIRCUIT BOARD AT WILL.
9. WHEN THE R/C CAR IS COVERED WITH SOIL AND DUST AFTER PLAYING, IT MUST BE GENTLY WIPED WITH A WET CLOTH.
10. PLEASE DO NOT PUT THIS TOY IN THE WATER AS IT WILL DAMAGE THE ELECTRONIC COMPONENTS.



WARNING!

SMALL PARTS ARE CONTAINED. NOT SUITABLE FOR CHILDREN UNDER 3 YEARS OLD. IT SHOULD BE PLAYED UNDER THE SURVEILLANCE OF THE ADULTS. IMPORTANT INFORMATION IS CONTAINED IN THIS INSTRUCTION MANUAL, PLEASE WELL KEEP IT FOR FUTURE REFERENCE.

STUNT CAR DINOSAUR DRIFT SPRAY VEHICLE



WARNING:

PLEASE READ THE INSTRUCTION MANUAL CLEARLY BEFORE OPERATING THE PRODUCT

DINOSAUR SPRAY STUNT CAR MANUAL

THANK YOU FOR USING OUR TOY PRODUCTS. IN ORDER TO MAKE YOU HAVE A BETTER UNDERSTANDING OF THIS PRODUCT, PLEASE READ THE FOLLOWING INSTRUCTIONS CAREFULLY BEFORE USING, WHICH WILL BRING YOU A DIFFERENT SENSE OF OPERATION EXPERIENCE.

CAUTIONS

- REMOTE CONTROL PRODUCT: THIS PRODUCT IS SUITABLE FOR CHILDREN AGED 14 AND ABOVE. IT CAN NOT BE USED BY CHILDREN UNTIL ASSEMBLED/ FINISHED CHARGING BY ADULTS.
- PLEASE USE THIS PRODUCT UNDER THE SUPERVISION OF ADULT. PLEASE DO NOT DISASSEMBLE OR RE-EQUIP THIS PRODUCT WITHOUT AUTHORIZATION. ANY CHANGE MAY CAUSE THE PRODUCT TO FAIL TO WORK NORMALLY.

PRECAUTIONS

1. 1 PC 3.7V RECHARGEABLE LITHIUM BATTERY IS REQUIRED IN THIS TOY CAR. 2 PC 1.5V "AA" NON-CHARGEABLE BATTERIES ARE REQUIRED IN THIS TRANSMITTER. 1 PC 3V "CR2032" BUTTON NON-CHARGEABLE BATTERY IS REQUIRED FOR THE WATCH CONTROLLER.
2. REMOVING OR LOADING THE BATTERY SHOULD BE AS THE CORRECT "+/-" POLARITY AND VOLTAGE MARKED IN THE BATTERY COMPARTMENT;
3. NON-CHARGEABLE BATTERY IS NOT TO BE CHARGED.
4. THE RECHARGEABLE BATTERY IS TO BE CHARGED UNDER THE SURVEILLANCE OF THE ADULT.
5. THE RECHARGEABLE BATTERY IS TO BE REMOVED FROM THIS TOY BEFORE CHARGING;
6. DIFFERENT TYPES OF BATTERIES OR OLD AND NEW BATTERIES CANNOT BE MIXED;
7. THE ORIGINAL BATTERY SHOULD BE REQUIRED IN THE CAR BODY. USB CABLE EQUIPPED BY THE ORIGINAL FACTORY IS TO BE USED FOR CHARGING.
8. EXHAUSTED BATTERIES ARE TO BE REMOVED FROM THIS TOY. IF NOT USED IT FOR A LONG TIME, PLEASE REMOVE THE BATTERY FROM THIS TOY.
9. THE POWER TERMINAL IS NOT TO BE SHORT-CIRCUITED;
10. USE A SCREWDRIVER TO UNSCREW IT ON THE BATTERY COVER OF THE TRANSMITTER AND LOAD THE BATTERY AS PER THE CORRECT "+/-" POLARITY. USE A SCREWDRIVER TO UNSCREW IT ON THE BATTERY COVER AT THE BOTTOM OF THE CAR AND CONNECT THE BATTERY PLUG WIRE WITH THE POWER WIRE OF THE CAR BODY AS PER THE CORRECT "+/-" POLARITY;
11. REPAIR & MAINTENANCE: THIS PRODUCT IS COMPOSED OF PLASTIC, HARDWARE AND ELECTRONIC COMPONENTS. IT IS PROHIBITED TO PUT IT INTO THE WATER OR BE PLACED OR USED IN A HUMID ENVIRONMENT FOR A LONG TIME. REGULARLY CHECK WHETHER THE WIRES, PLUGS, OUTER SHELL AND OTHER PARTS ARE DAMAGED OR NOT. IF DEFECTS ARE FOUND, STOP USING UNTIL THEY ARE REPAIRED IN GOOD CONDITION;

DESCRIPTION OF 2.4G AUTO-DECODING

1. AFTER LOADING THE BATTERY INTO THE TRANSMITTER, THE INDICATOR OF THE TRANSMITTER STARTS FLASHING. LOAD THE BATTERIES INTO THE R/C CAR, SWITCH IT ON AND IT WILL GO INTO THE STATE OF CONNECTING. WHEN IT IS SUCCESSFULLY CONNECTED, THE INDICATOR ON THE TRANSMITTER WILL BE "OFF". CAUTION: IF IT IS NOT SUCCESSFULLY CONNECTED, PLEASE REPEAT THE OPERATION ABOVE.
2. EACH TRANSMITTER CAN ONLY BE CONNECTED WITH ONE R/C CAR. WHEN THE CONNECTION IS SUCCESSFUL, EACH CAR WILL NOT INTERFERE WITH EACH OTHER. NOTE: MORE CARS CANNOT BE CONNECTED AT THE SAME TIME.
3. IF THE TRANSMITTER IS NOT OPERATED ANY FUNCTION WITHIN ONE MINUTE, IT WILL AUTOMATICALLY ENTER INTO SLEEP MODE (THE INDICATOR WILL BE OFF). PRESS THE ON/OFF OF THE TRANSMITTER AND RESTART.
4. WHEN IT NEEDS TO BE MADE DECODING WITH OTHER TRANSMITTER OR R/C CAR OF THE SAME MODEL, PLEASE REMOVE THE BATTERIES INSIDE THE TRANSMITTER AND SWITCH OFF THE POWER OF THE R/C CAR AND THEN MAKE DECODING ONCE AGAIN.

OPERATING INSTRUCTION

- DURING THE COURSE OF OPERATING THIS PRODUCT, THE POWER SWITCH IS ON THE POSITION OF "ON". IF THE POWER SWITCH IS IN THE "OFF" POSITION, THE R/C CAR IS UNDER THE STATE OF SWITCH-OFF.
- WHEN THE BATTERY POWER IS CONSUMED, THE LEFT AND RIGHT STEERING FUNCTION WILL BE NOT SENSITIVE AND THIS TIME THE ACTION OF FORWARD AND BACKWARD WILL SLOW DOWN AS WELL. AT THIS TIME, THE BATTERY NEEDS TO BE REMOVED FOR CHARGING.
- THE EFFECTIVE CONTROL DISTANCE OF THE R/C CAR IS ABOUT 25 METER. WHEN THE DISTANCE IS EXCEEDED, THE R/C CAR MAY STOP OR BE UNCONTROLLED.

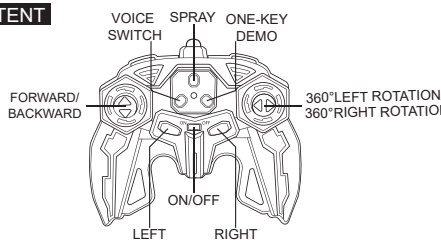
INSTRUCTION ON THE INTERCHANGE BETWEEN HANDLE-CONTROLLER AND WATCH-CONTROLLER

1. WHEN THE HANDLE-CONTROLLER IS MADE DECODING WITH THE R/C CAR, THE BATTERY OF THE WATCH-CONTROLLER SHALL BE REMOVED AND LOADED AGAIN. (THE ON/OFF OF THE R/C CAR SHOULD BE SWITCHED OFF AND THEN SWITCHED ON.)
2. WHEN THE WATCH-CONTROLLER IS MADE DECODING WITH THE R/C CAR, THE BATTERY OF THE WATCH-CONTROLLER SHALL BE REMOVED AND LOADED AGAIN. (THE ON/OFF OF THE R/C CAR SHALL BE SWITCHED OFF AND THEN SWITCHED ON.)

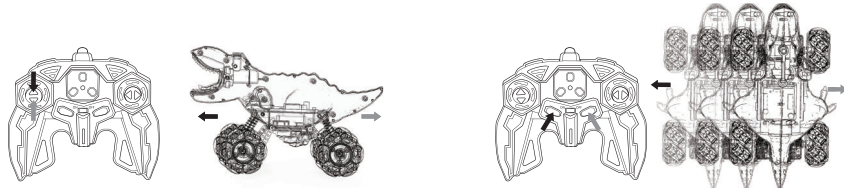
INSTRUCTION ON USING THE TRANSMITTER TO CONTROL THE R/C CAR

1. SWITCH ON THE POWER OF THE TRANSMITTER AND THE INDICATOR WILL BE "ON".
2. PRESS THE SPRAY BUTTON OF THE REMOTE CONTROL TO TURN ON THE LIGHT AND SPRAY OF THE REMOTE CONTROL CAR (WATER MUST BE ADDED FIRST)
3. PRESS THE "DEMO" KEY ON THE TRANSMITTER, THE R/C CAR WILL START MAKING DEMONSTRATION AUTOMATICALLY (BRING THEIR OWN SONGS)
4. PRESS THE SOUND ON KEY OF THE REMOTE CONTROL TO TURN ON OR OFF THE SOUND OF THE CAR.

CONTENT

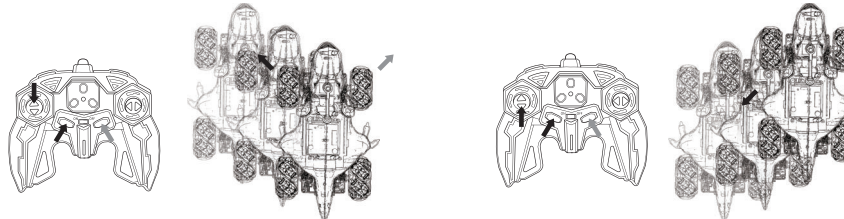


WHEN THE OPERATION IS FINISHED, IF THE ON/OFF IS NOT SWITCHED OFF, THE R/C CAR WILL AUTOMATICALLY ENTER INTO THE SLEEP MODE IN 1 MINUTE.



PUSH THE FORWARD / BACKWARD KEY OF THE TRANSMITTER, THE R/C CAR WILL MOVE FORWARD / BACKWARD.

PUSH THE LEFT / RIGHT TRAVERSE KEY OF THE TRANSMITTER, THE R/C CAR WILL TRAVERSE TO THE LEFT / RIGHT .

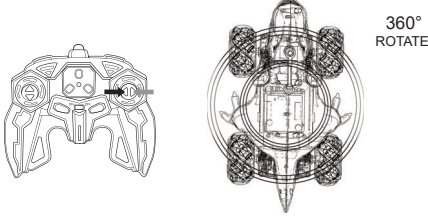


PUSH THE REMOTE CONTROL FORWARD/LEFT/RIGHT BUTTON, THE REMOTE CONTROL CAR WILL GO LEFT/RIGHT FORWARD

PUSH THE REMOTE CONTROL BACK/LEFT/RIGHT BUTTON, THE REMOTE CONTROL CAR WILL MOVE LEFT/RIGHT BACK

WATCH-CONTROLLED CAR
(INDUCTION MODE + MANUAL KEY)

1. POWER ON
KEEP PRESSING THE LEFT KEY TO SWITCH ON. IF IT IS NOT OPERATED FOR 1 MINUTE, THE WATCH WILL TURN OFF AUTOMATICALLY.



PUSH DOWN THE LEFT/RIGHT ROTATION KEY OF THE REMOTE CONTROL, TURN THE REMOTE CONTROL CAR 360 ° LEFT/360 ° RIGHT

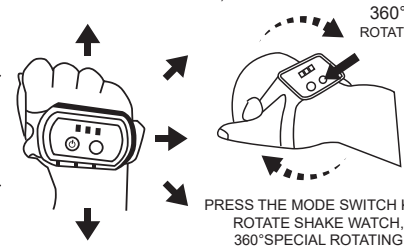


LONG PRESS TO TURN ON (SHORT PRESS THE SPRAY)

LONG PRESS AUTOMATIC DEMO (SHORT PRESS MODE CONVERSION)

INDUCTIVE OPERATION

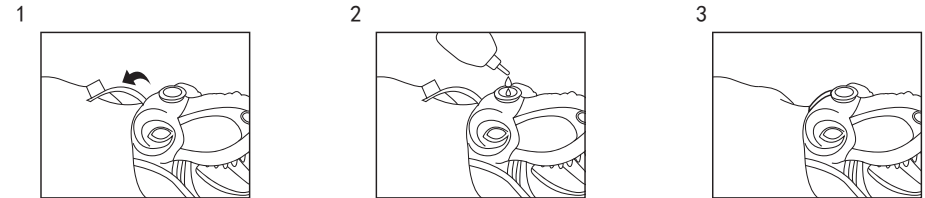
FRONT OF THE WATCH -- THE CAR MOVES FORWARD.
BEHIND THE WATCH - THE CAR MOVES BACK.
WATCH ON THE LEFT -- THE CAR TRAVERSES TO THE LEFT.
WATCH ON THE RIGHT -- THE CAR TRAVERSES TO THE RIGHT.
LEFT FRONT OF THE WATCH - THE CAR MOVES TO THE LEFT FORWARD.
RIGHT FRONT OF THE WATCH - THE CAR MOVES TO THE RIGHT FORWARD.
LEFT BACKWARD OF THE WATCH -- THE CAR MOVES TO THE LEFT BACKWARD.
RIGHT BACKWARD OF THE WATCH -- THE CAR MOVES TO THE RIGHT BACKWARD.



PRESS THE MODE SWITCH KEY, ROTATE SHAKE WATCH, 360° SPECIAL ROTATING

INSTRUCTION ON ATOMIZING

TWIST OFF THE PARTS, SUCK IN THE PURIFIED WATER WITH THE WATER INJECTION BOTTLE. DRIP IT INTO THE CAR HOLE AND FILL IT FULL WITH WATER AND THEN TWIST ON THE PARTS. (CAUTION: WHEN INJECTING THE CLEAN WATER, PLEASE DO NOT SPLASH WATER ON THE CAR BODY SO AS TO PREVENT THE CIRCUIT BOARD FROM BEING SHORT-CIRCUITED.



FCC Warning:

This equipment has been tested and found to comply with the limits for a Class B digital device, pursuant to part 15 of the FCC Rules. These limits are designed to provide reasonable protection against harmful interference in a residential installation. This equipment generates, uses and can radiate radio frequency energy and, if not installed and used in accordance with the instructions, may cause harmful interference to radio communications. However, there is no guarantee that interference will not occur in a particular installation. If this equipment does cause harmful interference to radio or television reception, which can be determined by turning the equipment off and on, the user is encouraged to try to correct the interference by one or more of the following measures:

- Reorient or relocate the receiving antenna.
- Increase the separation between the equipment and receiver.
- Connect the equipment into an outlet on a circuit different from that to which the receiver is connected.
- Consult the dealer or an experienced radio/TV technician for help.

Caution: Any changes or modifications to this device not explicitly approved by manufacturer could void your authority to operate this equipment.

This device complies with part 15 of the FCC Rules. Operation is subject to the following two conditions:

(1) This device may not cause harmful interference, and (2) this device must accept any interference received, including interference that may cause undesired operation.

This equipment complies with FCC radiation exposure limits set forth for an uncontrolled environment. This equipment should be installed and operated with minimum distance 0cm between the radiator and your body.