



FCC Caution

This device complies with part 15 of the FCC Rules. Operation is subject to the following two conditions: (1) This device may not cause harmful interference, and (2) this device must accept any interference received, including interference that may cause undesired operation.

Any Changes or modifications not expressly approved by the party responsible for compliance could void the user's authority to operate the equipment.

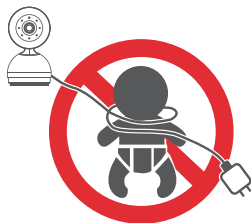
Note: This equipment has been tested and found to comply with the limits for a Class B digital device, pursuant to part 15 of the FCC Rules. These limits are designed to provide reasonable protection against harmful interference in a residential installation. This equipment generates uses and can radiate radio frequency energy and, if not installed and used in accordance with the instructions, may cause harmful interference to radio communications. However, there is no guarantee that interference will not occur in a particular installation. If this equipment does cause harmful interference to radio or television reception, which can be determined by turning the equipment off and on, the user is encouraged to try to correct the interference by one or more of the following measures:

- Reorient or relocate the receiving antenna.
- Increase the separation between the equipment and receiver.
- Connect the equipment into an outlet on a circuit different from that to which the receiver is connected.
- Consult the dealer or an experienced radio/TV technician for help.

For BABY CAMERA: This equipment complies with FCC radiation exposure limits set forth for an uncontrolled environment. This equipment should be installed and operated with minimum distance 20cm between the radiator & your body.

For MONITOR: This device has been evaluated to meet general RF exposure requirement. The device can be used in portable exposure condition without restriction.

Baby Monitor USER MANUAL



Hazard Warnings: Potential Risk of Strangulation

Please be aware that children are at risk of strangulation and suffocation accidents caused by rope entanglement.

Please keep power cords away from children; maintain a distance of at least 6 feet (2m).

Do not allow children to use this product as a toy without supervision.

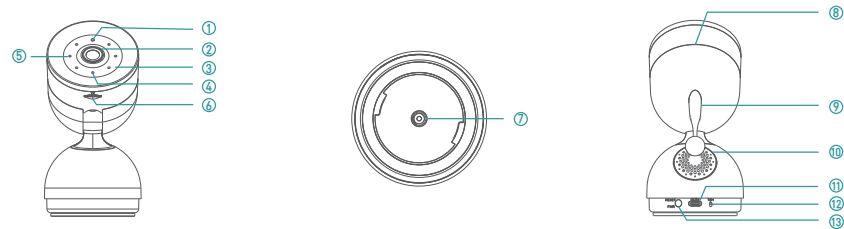
Please do not leave the camera in the baby cot or safety fence.

This baby monitor kit is a monitoring aid and can not replace the functions and responsibilities of an adult supervision.

Do not leave your infant unattended or alone at home. Infants need the constant care and attention of an adult.

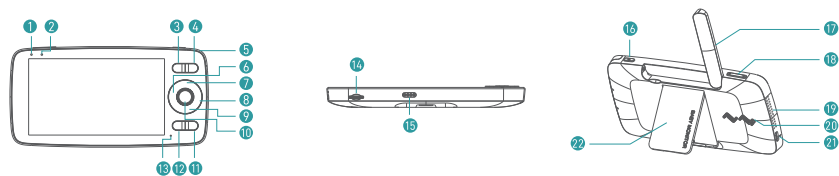
Do not use this product in an environment that could potentially leak flammable gas, or expose the product to rain or humid conditions.

BABY CAMERA(KB10)



- ① Night Vision Sensor
- ② Camera Lens
- ③ IR LED
- ④ Working Indicator Light: Red light is always on (camera is powered on); red light flashes slowly (camera enters network configuration mode); green light is always on (camera is connected to the network); green light flashes slowly (camera is disconnected from the network).
- ⑤ Microphone
- ⑥ TF-card Slot: Local data storage, maximum support 256G TF-card.
- ⑦ Mounting Bracket
- ⑧ Lullaby Touch Switch: Long touch this area turns the lullaby on/off, and short touch switches the lullaby.
- ⑨ Antenna
- ⑩ Speaker: Play the sound of the camera.
- ⑪ Power Input(Type-C)
- ⑫ Temperature and Humidity Sensor
- ⑬ Reset/Pair Button: Press twice in a row to enter pairing mode; press and hold for 3 seconds to enter network configuration mode; press and hold for 10 seconds to restore to factory settings.

MONITOR(KB01)



- ❶ LED status indicator: Blue light flashes slowly (monitor is displaying, camera not connected); blue light flashes quickly (monitor is pairing); blue light is always on (monitor is connected to camera); blue light is off (monitor is powered off).
- ❷ LED charging indicator : Orange light is always on (battery charging), orange light is off (fully charged).
- ❸ Menu: Short press to enter the quick menu interface, long press to enter the main menu interface.
- ❹ Return: In shortcut menu or main menu mode, press this key to back to the previous menu, in talking mode press this key to end talking.
- ❺ Alarm indicator light: Fast flashing red light (emergency alarm), slow flashing red light (general alarm).
- ❻ Left: Press to pan the camera leftward or to change your selection leftward.
- ❼ Up: Press to tilt the camera upward or to change your selection upward.
- ❽ Right: Press to pan the camera rightward or to change your selection rightward.
- ❾ Down: Press to tilt the camera downward or to change your selection downward.
- ❿ Zoom/OK: Press to Zoom in/out or to confirm your selection.
- ⓫ Talk: Press to talk to your baby in the monitoring image.
- ⓬ VOX: Press to turn on/off cry detection.
- ⓭ Microphone
- ⓮ TF-card slot: Local data storage, maximum support 256G TF-card.
- ⓯ Contact charging contacts: Use with the charging base for contact charging.

- ⓰ Power/Sleep Button: Long press to turn on/off the monitor ; short press to turn on/off the screen.
- ⓱ Antenna: Put up the antenna the will achieve best range.
- ⓲ Volume increase and decrease: Left press to decrease and right press to increase.
- ⓳ Speaker: Play the sound of the monitor.
- ⓴ Reset Hole
- ⓵ Type-C charging port
- ⓶ Foldable stand



- ⓷ Contact charging pin: Use with the monitor for contact charging.
- ⓸ Base charging indicator: Green light is always on (base is powered on), sky blue light is always on (monitor is being charged).
- ⓹ Type-C charging port

Precautions:

1. The monitor comes with a built-in battery that can last up to 6 hours of continuous use after a full charge. When the battery is low, it will pop-up power alert. Do not open the battery compartment without official guidance.
2. Please use the original AC adapter and power cord(1M) for battery recharge. It takes about 5 hours to fully charge the monitor.
3. Do not use this product on a sloping or unstable surface, keep it away from heat sources to avoid possible damage, and do not place it near or on any electrical appliances.
4. Do not allow children to use this product as a toy without supervision.

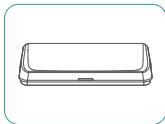
PACKING CONTENTS



Camera×1



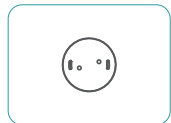
Monitor×1



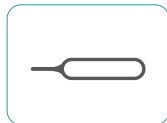
Charging Baes×1



Power Adapter×2(Optional)



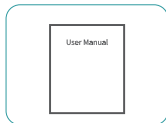
Wall Mount Shim×1



Reset In×1



Screw Set×2



User Manual×1

GETTING STARTED

Step 1:

1. Connect the camera to the AC adapter.
 2. Plug the AC adapter into a socket.
- Note: Put the camera away from your baby(3ft/1m away at least).



Step 2:

1. Connect the charging base to the AC adapter.
2. Plug the AC adapter into a socket.
3. Place the monitor on the charging base.
4. Long press the power button to turn on the monitor then you can see the monitoring interface.

Note: The monitor takes about 5 hours to be fully charged, and it lasts about 6-7 hours.



APP DOWNLOAD

1.Download: Search 'RSmart' in the App stores or scan the below QR code to download.



2. Register: After select the location, you can use email or phone number to register.
3. Login: Log in to the App with your registered account.

SET UP Wi-Fi FOR THE CAMERA(BLUETOOTH OR SCAN)

The camera can be paired with the monitor through its private AP network, with up to 300 meters wireless intercom range. You can also add the camera into your App account, setting up Wi-Fi so as to view & control your camera remotely through mobile devices.

Steps to add a camera via Bluetooth in your App:

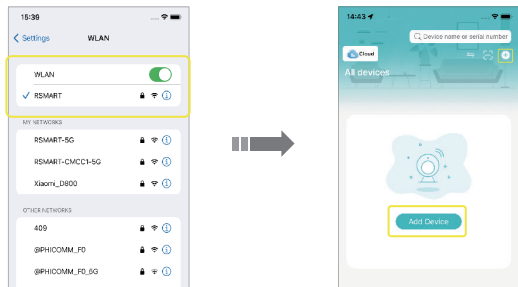
1. Plug in to supply power to the camera. Press and hold the reset button for 3 seconds until you hear a 'di' prompt sound and then release it.



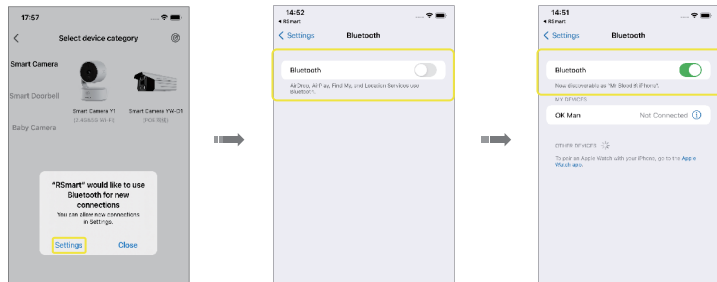
2. Confirm the LED indicator blinks red. Now you have 2 minutes to set up your camera.



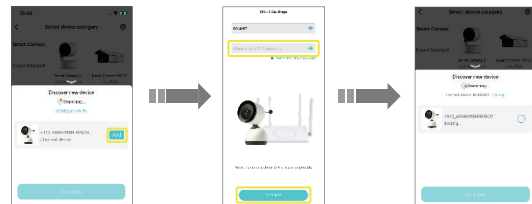
3. Connect your phone to the Wi-Fi you want to configure, open the 'RSmart' App, and click 'Add Device' or the '+' button on the upper right corner.



4. In the pop-up Bluetooth permission dialog box, click 'Settings' to enter the Bluetooth settings interface, turn on Bluetooth and return to the 'Select device category' interface. The App will automatically search for nearby devices.



5. Click the camera you want to add in the search list, then fill in the correct Wi-Fi password in the pop-up 'Wi-Fi Settings' interface, and then click 'OK'. The camera will enter the automatic network configuration and addition process.



6. After adding successfully, the indicator light turns green and is on steadily. You can now change the name of the device or click the 'Finish' button to jump back to the device list.



Note:

Please operate the process near your Wi-Fi router.

Make sure your phone is connecting to a 2.4GHz Wi-Fi.

Make sure the camera is turned on, and its indicator LED is flashing red. If not, press and hold RESET for 3 seconds.

Ensure the Wi-Fi signal is good, and the Wi-Fi password is correct.

Steps to add a camera via scanning in your App:

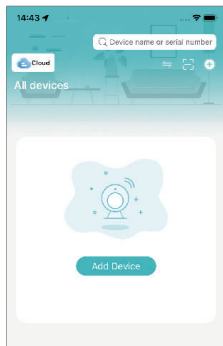
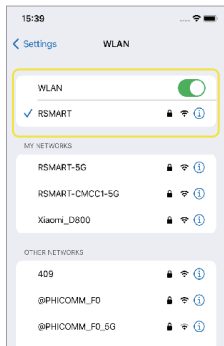
1. Plug in to supply power to the camera. Press and hold the reset button for 3 seconds until you hear a 'di' prompt sound and then release it.



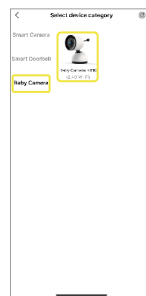
2. Confirm the LED indicator blinks red. Now you have 2 minutes to set up your camera.



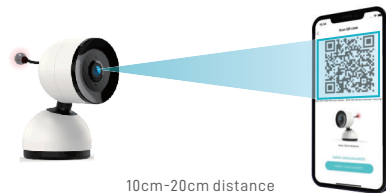
3. Connect your phone to the Wi-Fi you want to configure, open the 'RSmart' App, and click 'Add Device' or the '+' button on the upper right corner.



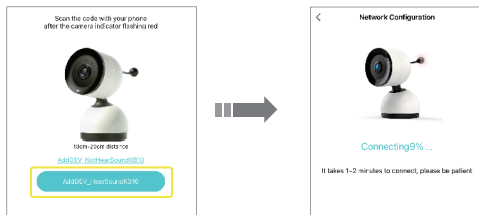
4. Click 'Baby Camera', select the corresponding camera model, click 'Next', fill in the correct Wi-Fi password in the pop-up 'Wi-Fi Settings' dialog box, then click 'Next'.



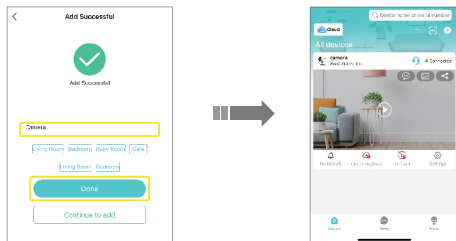
5. Use the camera lens to scan the QR code on the phone screen. After the scan is successful, the camera will make a 'didi' sound.



6. Click 'I heard a didi sound' and the camera will enter the automatic network configuration adding process.



7. After adding successfully, the indicator light turns green and is on steadily. You can now change the name of the device or click the 'Finish' button to jump back to the device list.



Note:

Please operate the process near your Wi-Fi router.

Make sure your phone is connecting to a 2.4GHz Wi-Fi.

Make sure the camera is turned on, and its indicator LED is flashing red. If not, press and hold RESET for 3 seconds.

Ensure the Wi-Fi signal is good, and the Wi-Fi password is correct.

CAMERA SETTING

Notice:

The camera and monitor were paired already. This function is to add new camera to the monitor.

1. Add camera

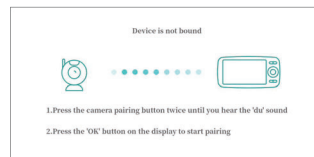
Step 1:

1. Long press to enter menu page.
2. Choose and press OK button.



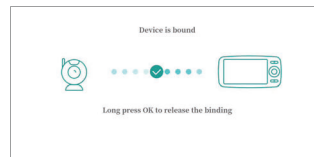
Step 2:

1. Press the OK button on the monitor to start pairing.



Step 3:

1. Press the camera pair button twice until you hear the 'du' sound.
2. Then see the prompted is bound.





Note:

Long press the OK button to release the binding.

2. Delete camera

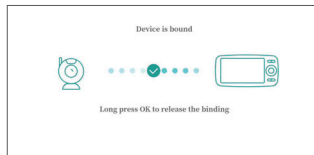
Step 1:

1. Long press  to enter menu page.
2. Choose  and press 'OK' button.



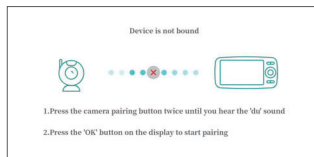
Step 2:

1. Long press the OK button  to release the binding.



Step 3:

1. Then see the prompted is not bound.




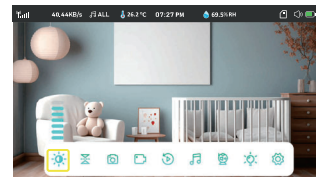
Note:

In this state, you can bind a new camera.


QUICK MENU

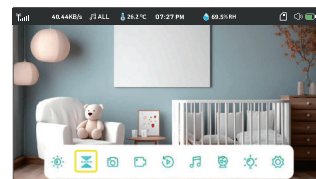
1. Display brightness adjustment:

Press menu button on display, then select , press 'Up/Down' button can increase/decrease the display brightness.





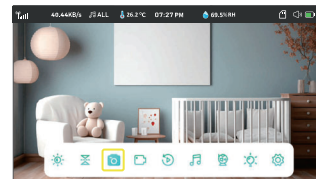
2. Screen flip:

Press menu button on display, then select , press 'OK' button can flip the screen.





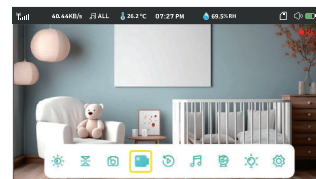
3. Take photo:

Press menu button on display, then select , press 'OK' button can take photo, press  to end.




4. Record video:

Press menu button on display, then select , press 'OK' button can record video, press  to end.



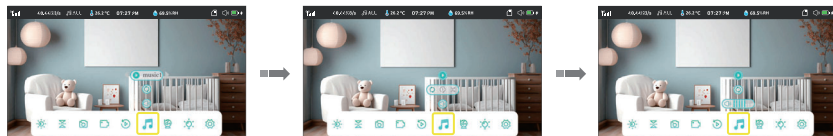
5. View the picture and video:

Press menu button then select , press 'OK' button enter to the interface. Select time, choose the video or picture you want to view then press 'OK'. In preview press 'OK' to play or stop, you can also choose to fast forward or rewind or play multiple times, press direction arrow key can adjust the volume, press to exit.




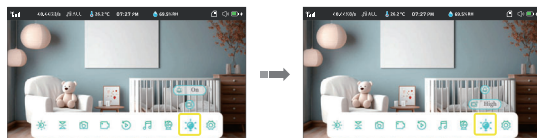
6. Play music:

Press menu button then select , press 'OK' button enter in to music interface, press Left / Right arrow to choose music, press Up/Down arrow to adjust volume.



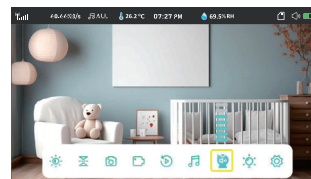
7. Indicator lights:

Press menu button then select , press 'OK' button enter in to indicator light interface, press Left / Right arrows to turn the camera indicator light off / on or to select the monitor alarm indicator mode.



8. Camera volume adjustment:

Press menu button on display, then select , press 'Up/Down' button can increase/decrease the camera volume.





FEEDING

Explanation:

This function is to remind you of feeding your baby. OFF means you shut down the function; 2.5H means it reminds you every 2.5 hours and so on for the other options.

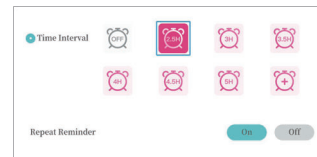
Step 1:

Press  to enter menu page.
Choose  and press 'OK' button.



Step 2:



Select the time you want.
Select OFF to turn off the feeding reminder.



TEMPERATURE and HUMIDITY

You can monitor the humidity and temperature of the baby room in real time, and receive an alarm to take corresponding measures when the temperature and humidity exceed the set range.

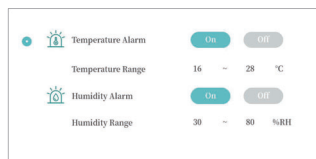
Step 1:

Press  to enter menu page.
Choose  and press 'OK' button.



Step 2:



Turn on/off the features you want and select the values you want.

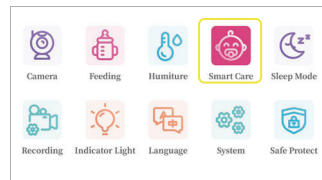


SMART CARE

You can open motion detection, noise detection, cry detection, then you can know your baby's situation anytime anywhere.

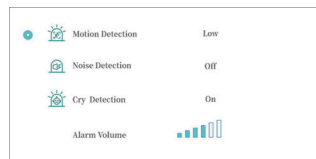
Step 1:

Press  to enter menu page.
Choose  and press 'OK' button.



Step 2:

Turn on/off the features you want.





SLEEP MODE

Proper use of the screen can increase standby time.

Note: 1. You can choose to turn on/off the live sound in the off screen/always on screen mode.
2. The screen will automatically light up if there is a alarm.

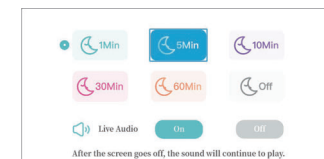
Step 1:

Press  to enter menu page.
Choose  and press 'OK' button.



Step 2:



Select the time you want.
Select OFF to turn off Sleep Mode.



RECORDING

Record your baby's wonderful moments.

Step 1:

Press  to enter menu page.
Choose  and press 'OK' button.



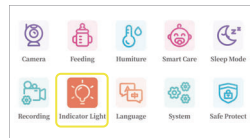
INDICATOR LIGHT

You can turn the camera indicator light on/off and select the monitor warning light mode.

Note: If you turn off the camera indicator light or the monitor warning light, the corresponding indicator light will go out.

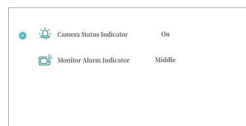
Step 1:

Press to enter menu page.
Choose and press 'OK' button.



Step 2:

Turn on/off the camera indicator light or select the display warning light mode you want.



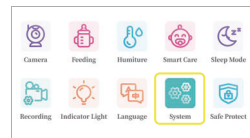
SETTINGS

This function is to set Date/Time, change wallpaper, restore factory settings, and perform OTA upgrades.

Date/Time

Step 1:

Press to enter menu page.
Choose and press 'OK' button.
Choose and press 'OK' button.



Step 2:

Set the display date/time according to the local date/time.

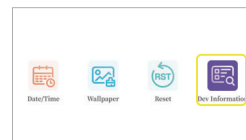


Note: If the camera is connected to the Internet, the monitor will automatically synchronize the network date/time and cannot be set manually.

Device information

Step 1:

Press to enter menu page.
Choose and press 'OK' button.
Choose and press 'OK' button.



Step 2:

Press Left/Right arrow to select monitor or camera, press 'OK' to check if have new software.

Note: If have new version software, press 'OK' button confirm to upgrade, after upgrade successfully device restart to work.

SAFETY PROTECTION

You can choose between online mode and local mode. If you choose local mode, the device will lose connection with the App and no user can use the App to access the device. If you choose online mode, you can view the record of users accessing the camera through the App, and you can also see the Wi-Fi name and Wi-Fi signal.

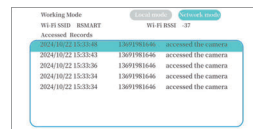
Step 1:

Press to enter menu page.
Choose and press 'OK' button.



Step 2:



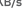




Select the working mode you want.










Note: If you select local mode, the camera will not be able to configure the external network. If the device needs to connect to the external network, please switch back to the network mode in the monitor.









ICONS EXPLANATION

1. Status Bar Icons

-  : No signal connection
-  : Signal strength
-  : Real-time bit rate
-  : Lullabies enabled
-  : Temperature
-  : Current room temperature
-  : Current time

-  : Humidity
-  : Current room Humidity
-  : The monitor has an Micro SD card inserted
-  : Monitor current volume
-  : Monitor current battery level
-  : The monitor is charging
-  : Intercom on

2. Notifications Icons

-  : No camera connected
-  : Feeding Notification
-  : Temperature Alarm
-  : Humidity Alarm
-  : Motion Alarm
-  : Noise Alarm
-  : Crying Alarm
-  : Low battery Alarm

FAQ

Q1. Why did I fail to connect the camera to the monitor?

- * Make sure to plug the power adapter into the camera and socket firmly.
- * Make sure the camera and the monitor is within the effective distance.

Q2. The monitor cannot be previewed properly?

- * Check whether the monitor has connected to the camera. If not, pair the camera and the monitor firstly.

Q3. What if the monitor screen is stuck and it doesn't work while pressing any buttons ?

- * Press the reset button of your monitor with the pin, and then long press the power button of your monitor to restart it.

Q4. Why the it cannot detect my SD card?

- * Make sure the Micro SD card is properly installed and try formatting the SD card in FAT32 format before using.

Q5. Why I can't get the notifications with my cell phone App when I connect the camera to the monitor?

- * To be able to receive visitor notifications properly on your smart phone, it is important to allow all notifications and permissions. You can check this from your phone settings regarding App permissions within the Rsmart App.

Q6. Why the monitor lost connection with the camera after the camera is connected to the Rsmart App?

- * The monitor has a 2 minute interruption time when the camera is reset, and it will automatically resume after 2 minutes. If it doesn't recover, try to pair the monitor and camera again.

- Please read this instruction manual carefully before using , and keep it for future reference.
- The manufacturer reserves the right to modify and improve any functional descriptions in this user manual and to continuously update new content in the App without prior notice.
- This user manual is for reference only.
- The actual baby monitor sold is subject to the final product.