

P107

6 Mics HYBRID ANC  
+  
AI Resists Wind Noise

Product user manual

01 /Product Parameters

Product Name	Hybrid ANC Wireless Earphones
Product Number	P107
Bluetooth version	V5.4+EDR
Work Range	10-15 Meters
Wireless Frequency	2,402-2,480GHz
Charging Voltage	5V/1A
Charging Time	About 2 hours
Noise Reduction(DB)	-65dB
Working Time	About 7H per session and 35H in total
Battery Capacity	40mAh/400mAh
Charging case size	63×47×28,5mm

02 / Warnings:

- Do not disassemble the earphones.
- Please use standard cable and adapter for charging.
- This machine supports left and right ear wear.

03 /Headset boot pairing connection

Earphones automatically turn on when open the charging case.

2.Power Off  
Put the earphone back to charging case to power off automatically. Earphone will power off after 3 minutes without connecting any device.

3.Blutooth pairing  
The left and right earphones are pairing immediately after power on.

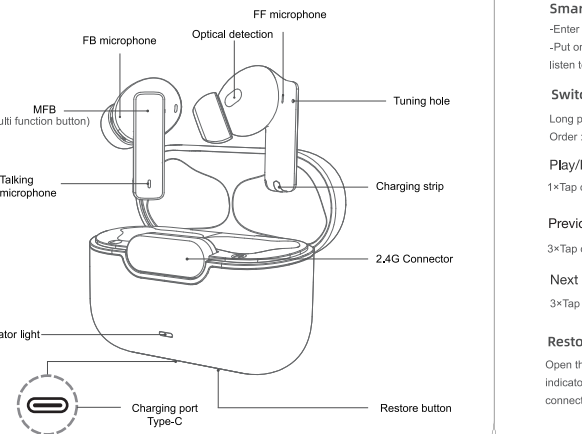
4.How to connect  
Take out both earbuds from charging case, they will be pairing automatically. Turn on device Bluetooth and search for "P107", then click to link it.

If connection fails, put the earbuds back to the case and try again. Ater connection, earbuds will automatically re-connect to last paired device when power on.

5.Blutooth disconnected  
Turn off the Bluetooth of device, and the earphones enters the pairing mode. After the earphones are disconnected from the device, it will automatically connect back when in an effective distance range within 3 minutes.

6. How to use 2.4G connector  
Take out the earphones and 2.4G connector, the earphones will be connected to the device by inserting 2.4G (the device must support Type-C charging).

04 /Indicator chart



05 /Key Function

Smart optical wearing detection

- Enter the Noise canceling mode automatically when in ear /Remove either to enter normal mode.
- Put on the earphones to automatically play, take off the earphones to automatically pause when listen to the music.

Switch Modes

Long press either MFB to switch the modes  
Order : ANC ON→Transparency→Normal

Play/Pause the music

1×Tap on either MFB

Previous Track

3×Tap on the left MFB

Next Track

3×Tap on the right MFB

Restore the earbuds to factory settings

Open the charging case and leave the earbuds inside, hold down on the reset button until the indicator flash white, The earbuds will then be restored to their factory settings and clean the connections history.

Answer Calls

1×Tap on either MFB(automatic noise canceling in calling)

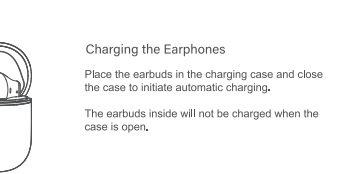
Hang up/Reject

2×Tap on either MFB(Invalid when in 2.4G connect)

Voice assistant

2×Tap on either MFB(Invalid when in 2.4G connect)

06/Charging diagram



Charging the Earphones  
Place the earbuds in the charging case and close the case to initiate automatic charging.  
The earbuds inside will not be charged when the case is open.

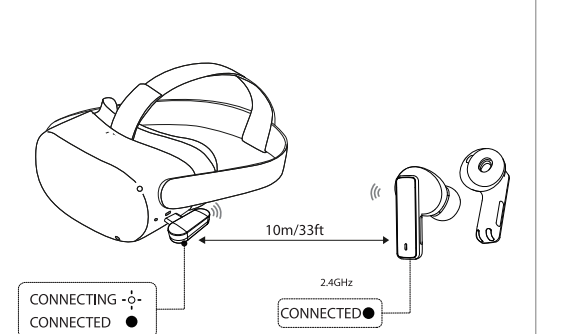
Charging the case  
Plug in the Type-C interface cable to charge the case. The orange light of the charging case is steady on, and the white light of the charging case is on for 10 seconds after it is fully charged.

Charge times  
The charging case will recharge the earphones about 4-5 times .

07/packing list

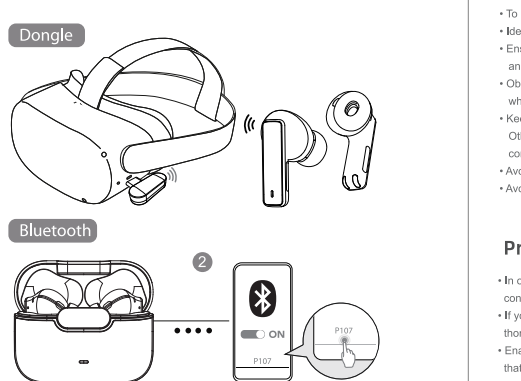
- Wireless Earphones .....\*1 set
- Earlips ..... \*2 pairs
- Dongle .....\*1
- Charging Cable .....\*1
- Manual ..... \*1

08/Pairing Via Dongle



When the dongle is plugged into the USB-C port of your VR headset or gaming console, the earbuds will automatically connect with it and be ready to use.

09/Dual Connection



If you have an incoming call on your Bluetooth device, you can hear the audio of both connected devices at the same time. After answering the call, only the audio of the communication device can be heard, and the audio of the other device will automatically resume after hanging up.

Safety Information

- To protect your hearing, do not listen to audio at a high volume for a long period of time.
- Ideal temperatures: 0°C to 35°C for operating; -20°C to +45°C for storage.
- Ensure that the power adapter meets the requirements of IEC/EN 62368-1 and has been tested and approved according to national or local standards.
- Observe all local traffic laws and regulations while using this product. Do not use this device when you are driving.
- Keep this device and its accessories that may contain small components out of the reach of children. Otherwise, children may damage this device and its accessories by mistake, or swallow the small components, which may cause choking.
- Avoid using the device in dusty, damp, or dirty environments, or near sources of magnetic interference.
- Avoid disassembling or modifying your device and its accessories.

Precautious

- In order for the earphones to function correctly, keep the mesh, ear tips, as well as the metal contact points on the earphones and charging case clean.
- If you experience any skin irritation while wearing the earbuds, remove them and clean them thoroughly. If the issue persists, seek advice from a medical professional.
- Enabling noise canceling may affect your awareness of surrounding sounds and alarms. Ensure that you are in a safe environment when using this function.

Lifetime Warranty

Superior Lifetime Warranty Service

We provide lifetime after-sales service for products that are damaged, defective, have missing parts, or have other issues.

How to Use the Lifetime Warranty Service

Activate Lifetime Warranty: Please scan the QR code or visit the website link below within 15 days.

-Contact us via Amazon or by email at support@iamjoy.tech to describe the issue you encountered and provide your order number. We will respond to you satisfactorily within 24 hours.

support@iamjoy.tech | www.iamjoy.tech



This device complies with part 15 of the FCC Rules. Operation is subject to the following two conditions: (1) this device may not cause harmful interference, and (2) this device must accept any interference received, including interference that may cause undesired operation.

Any changes or modifications not expressly approved by the party responsible for compliance could void the user's authority to operate the equipment.

**NOTE:** This equipment has been tested and found to comply with the limits for a Class B digital device, pursuant to Part 15 of the FCC Rules. These limits are designed to provide reasonable protection against harmful interference in a residential installation. This equipment generates, uses and can radiate radio frequency energy and, if not installed and used in accordance with the instructions, may cause harmful interference to radio communications. However, there is no guarantee that interference will not occur in a particular installation.

If this equipment does cause harmful interference to radio or television reception, which can be determined by turning the equipment off and on, the user is encouraged to try to correct the interference by one or more of the following measures:

- Reorient or relocate the receiving antenna.
- Increase the separation between the equipment and receiver.
- Connect the equipment into an outlet on a circuit different from that to which the receiver is connected.
- Consult the dealer or an experienced radio/TV technician for help.

The device has been evaluated to meet general RF exposure requirement, The device can be used in portable exposure condition without restriction.