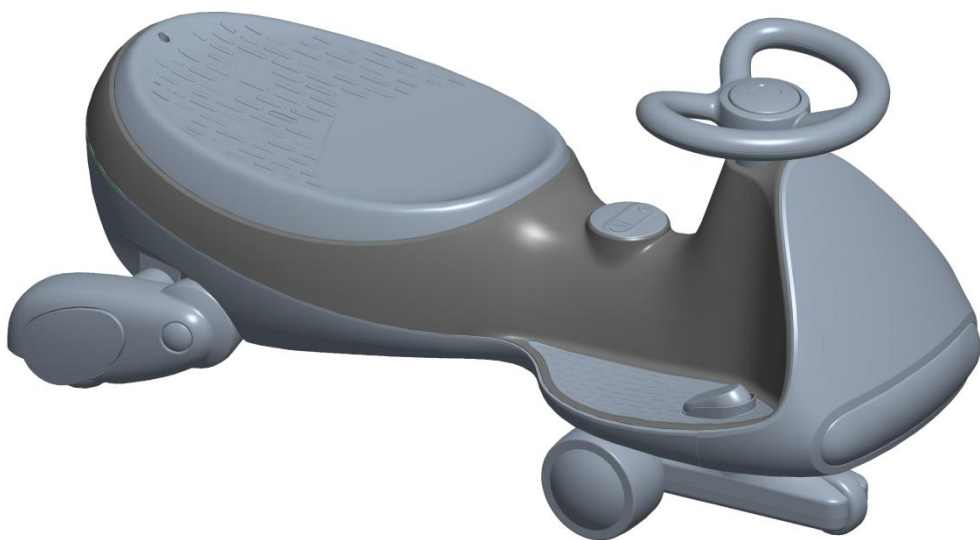


FanttikRide

CyberWiggle™ N7 Ultra

Electric Wiggle Car



ASTM F963,CPSIA,CA65



Read this manual carefully before use and keep it for future reference.

Catalogue

Use warning -----2~5

Product Information -----6

Parts List-----7

Parts Diagram-----8~9

Assembly Step-----10~13

Instructions For Use-----14~15

Fault Analysis-----16

Safety Notice

WARNING!

-It should be used under adult guidance.

-Parents should ensure that children have the safety measures before used.

-The toy should be used with caution since skill is required to avoid falls or collisions causing injury to the user or third party.

-Products should be assembled by an adult. Protective equipment should be worn. Not to be used in traffic. Not suitable for children under 3 years. Choking hazard-small parts. In unassembled state, contains potentially hazardous small parts. Please keep out of the reach of small children. Pay attention to the potential hazards of using the toy in areas other than private grounds.

-During the use of vehicles, PU wheels may cause scratches and losses to hardwood boards.

-When the vehicle's driving load exceeds 150 lbs. PU wheels may cause scratches and damage to hardwood floors.

-General Safety:

--Where products need assembly they must always be assembled by an adult. As a parent/carer, it is also your responsibility to check the tightness of screws, nuts and bolts before each use and if necessary, adjust and retighten.

--This product may contain small parts and it is your responsibility as a parent/carer to exclude children from the area during assembly due to small parts.

--Remove Protective material and poly bags and dispose of them responsibly before giving the assembled product to your child.

--Remember to retain these instructions for future reference.

-Positioning:

--Do not allow your child to ride at night or in poor light conditions.

--Do not let your child play near steps, swimming pools/spas or other sources of water, on slopes, on streets or around cars, even if parked on your own property.

--It is product is designed to be used on smooth surfaces and should not be used on soft ground or in the rain or snow. May not be suitable for carpet driving.

Safety Notice

WARNING!

-Before use:

- Dispose of all packaging material responsibly before giving this product to child.
- Check tightness of all components before giving this product to your child.

-During use:

- This product is only suitable for children 3 years and older.
- The toy should be used with caution since skill is required to avoid falls or collisions causing injury to the user or third parties.
- The maximum rider weight capacity for this product is 150 lbs. Overload may damage this product.
- Adult supervision is highly recommended when children play with wheeled toys. Please take care of your child.
- Do not allow the child to ride with bare feet or without suitable footwear.
- Ensure the child keeps clothing, hands, hair, fingers and feet away from moving parts.
- The use of protective gear including approved helmets, gloves and pad is recommended.
- Store this product at room temperature, do not leave it outside or uncared for.
- Never let any child play with the battery or charger at any time, or let them charge the product.
- Do not use if product is faulty or damaged.
- Do not tamper with the battery or electrical parts inside the product.

Charging the battery:

- All charging and recharging must be carried out by an adult.
- Do not attempt to use the product while it is being charged. When charging, all the functions will be cut off.
- Charging should be carried out under cover and in a well-ventilated area.
- Make sure the vehicle is powered off while charging.
- Always ensure the charger is plugged into a wall outlet. Do not use an extension.
- Do not charge near sources of potential sparks, fires or flames or where flammable gases, liquids and materials are stored.

Safety Notice

WARNING!

- During charging the battery and the charger may get hot.**
- Only charge the battery for a maximum time of 20 hours.**
- Always ensure that once the battery becomes discharged/flat that you recharge for the recommended time.Failing to do so will significantly shorten battery life.**
- Only use the battery supplied with this product.The use of other batteries may cause damage to the motor,charger and subsequent wiring,which could lead to fire and/or explosion.**
- Never short circuit the terminals of the battery,or any subsequent wiring.**

Safety Notice

WARNING!

FCC Warning Statement

Changes or modifications not expressly approved by the party responsible for compliance could void the user's authority to operate the equipment. This equipment has been tested and found to comply with the limits for a Class B digital device, pursuant to Part 15 of the FCC Rules. These limits are designed to provide reasonable protection against harmful interference in a residential installation. This equipment generates uses and can radiate radio frequency energy and, if not installed and used in accordance with the instructions, may cause harmful interference to radio communications. However, there is no guarantee that interference will not occur in a particular installation. If this equipment does cause harmful interference to radio or television reception, which can be determined by turning the equipment off and on, the user is encouraged to try to correct the interference by one or more of the following measures:








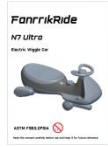
- Reorient or relocate the receiving antenna.
- Increase the separation between the equipment and receiver.
- Connect the equipment into an outlet on a circuit different from that to which the receiver is connected.
- Consult the dealer or an experienced radio/TV technician for help.

This device complies with part 15 of the FCC Rules. Operation is subject to the following two conditions: (1) This device may not cause harmful interference, and (2) this device must accept any interference received, including interference that may cause undesired operation.

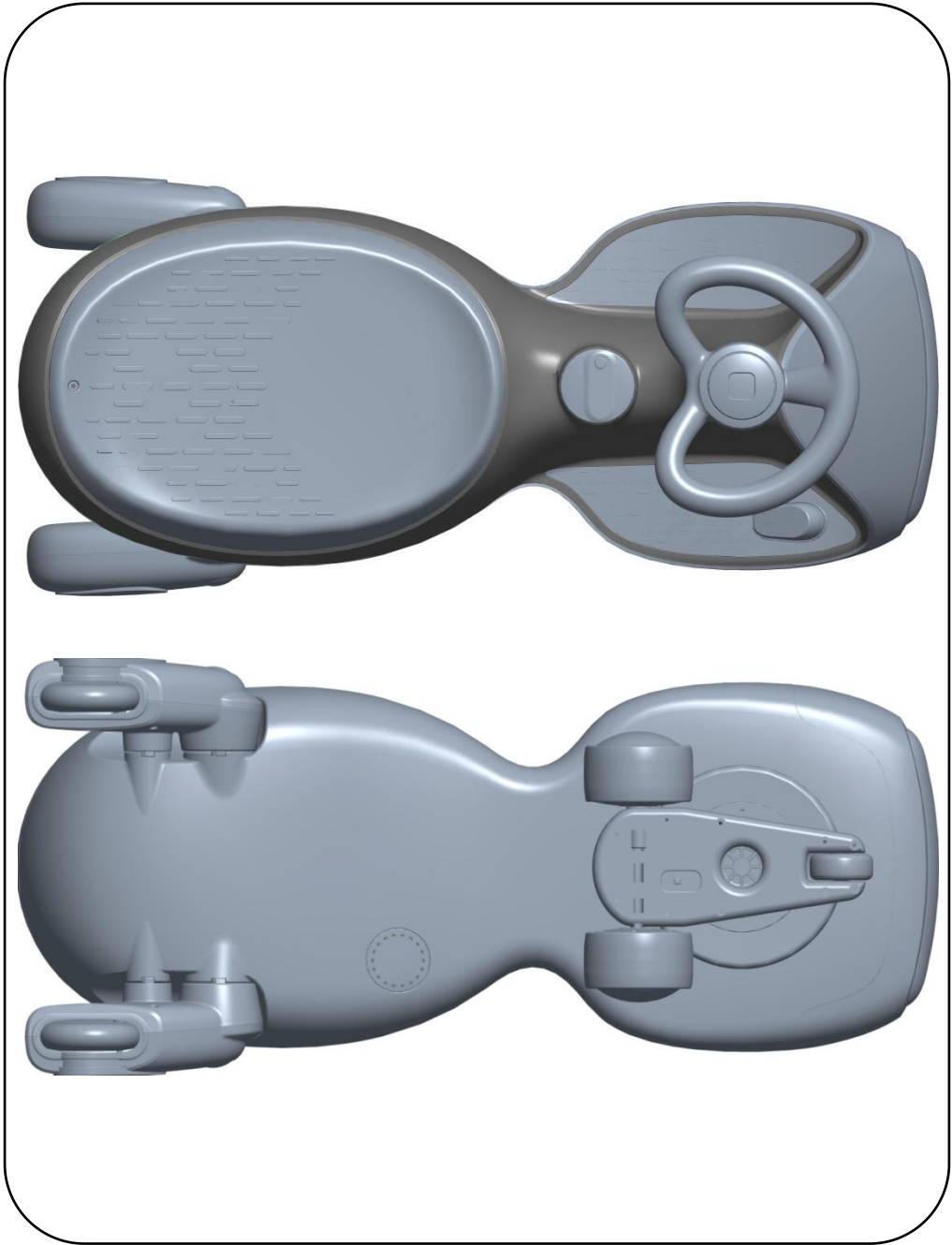
Product Information

Model number	N7 Ultra
Battery	Lithium battery 11.1v 2500mAh
Material	PP、ABS、PU
Suitable age	More than 36 months
Load capacity	Max 150 lbs
Size of car	76 X 34 X 41.5 cm
Speed	1.7~4 mph
Battery life	60~120 minutes (The battery life will vary due to changes in weight and environment, please refer to the actual situation)
Charging time	3.5~4 hours (The product comes with a USB charging cable, please bring your own qualified adapter)
Charging mode	USB charging cable (Please bring your own USB adapter that meets safety standards)

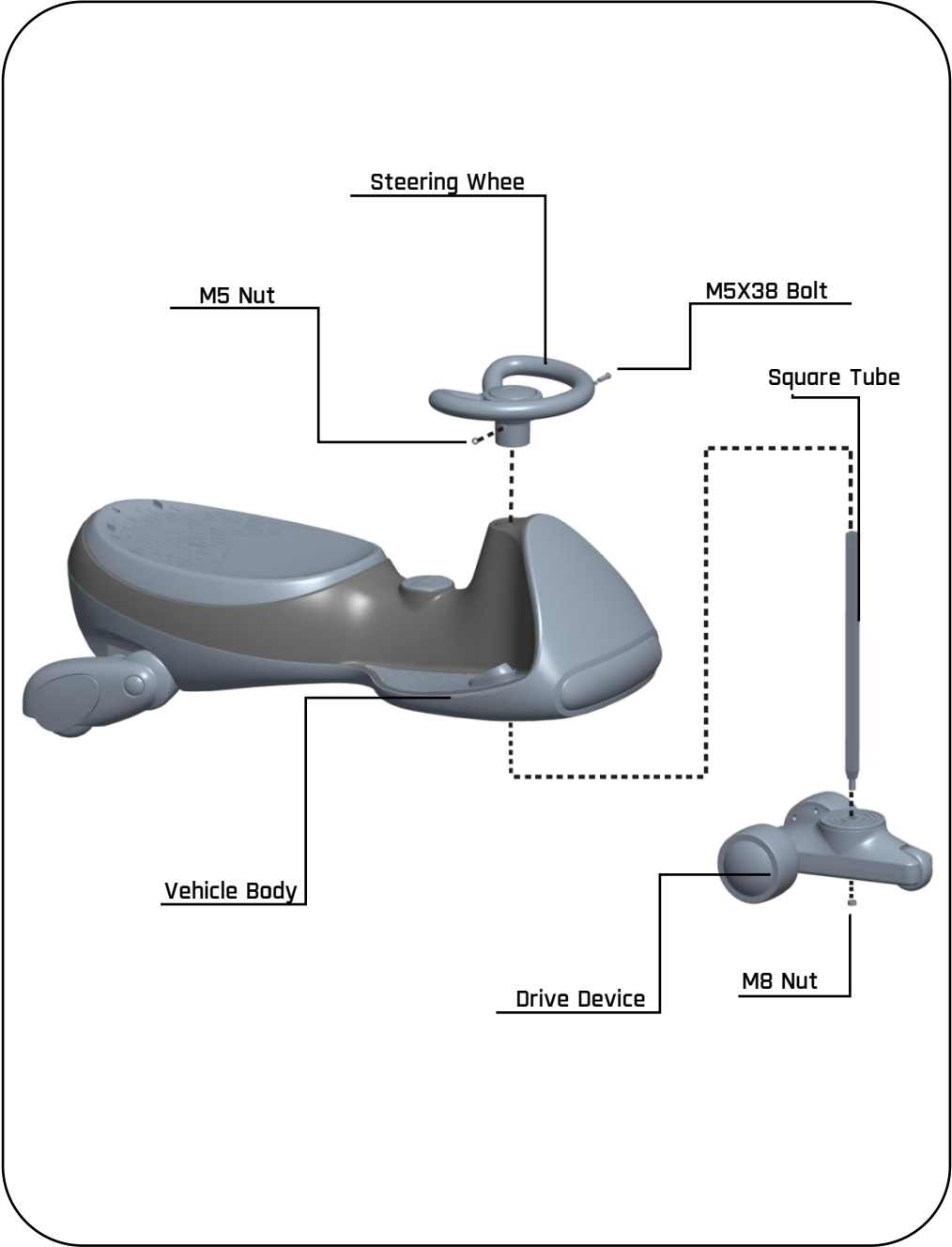
Parts List

Sequence	Part name	Picture	Quantity
1	Vehicle body		1
2	Drive device		1
3	Square tube		1
	Bolt and Nut (Installed on the square pipe)		3
4	Steering wheel		1
5	Nut locking tool		1
6	USB charging cable		1
7	Instruction manual		1

Parts Diagram

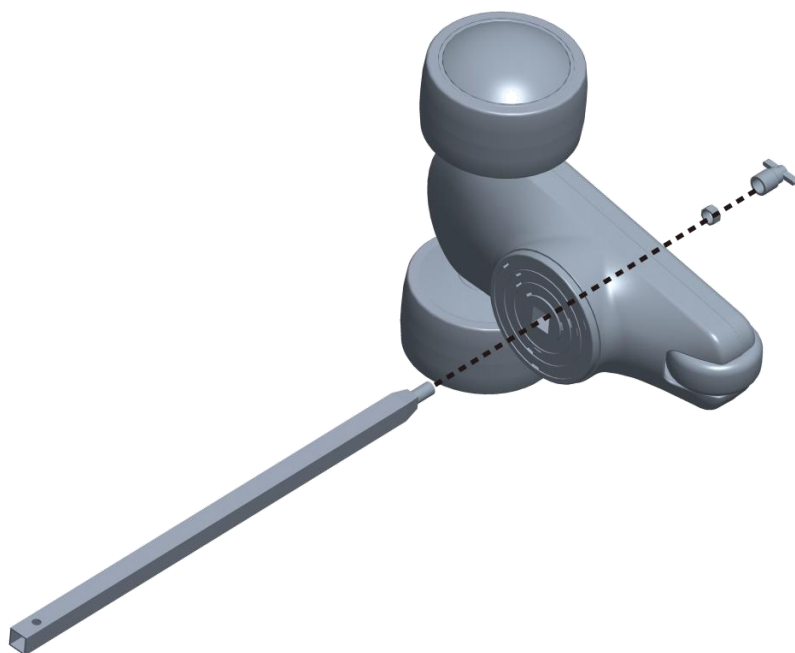


Parts Diagram



Assembly Step

1



Use the Nut locking tool to secure the Square tube to the

Drive device with the M8 Nut.

Assembly Step

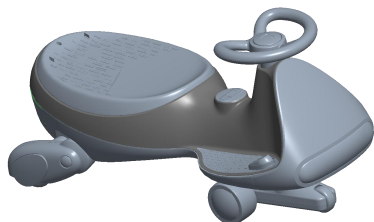
2



Please place the drive device with the square tube in the direction shown in the picture, pass the square tube through the round hole at the bottom of the car, and then lay the car flat on the ground.

Assembly Step

3



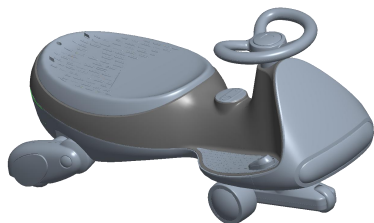
Place the arrow of the steering wheel towards the front,

insert the steering wheel into the square tube as shown in the

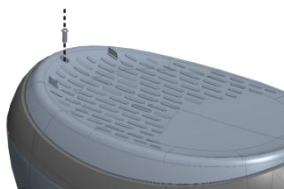
picture, and tighten it with M5 bolts and M5 nuts

Assembly Step

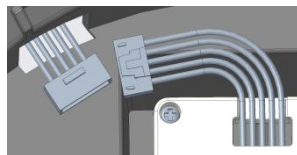
4



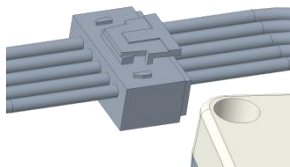
I Use a Phillips screwdriver to unscrew the car seat and then open the seat.
(A screwdriver must be prepared by yourself)



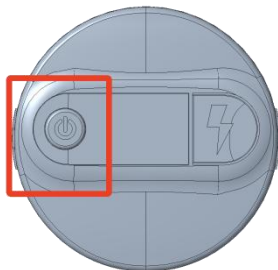
II Please find the docking port inside the vehicle and the battery docking port



III Connect the two interfaces face up and check that the connection is tight



IV Long press the function button of the body for 3 seconds, the vehicle will make a starting sound, and the vehicle's headlights will turn on, which indicates that the vehicle is in normal use, please install the seat back, and then it can be used normally



Instructions For Use

Start the vehicle:

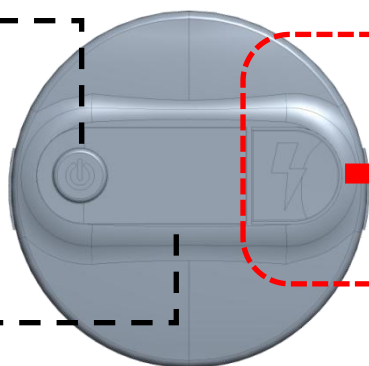
Long press the switch for 3 seconds in the off state. When the vehicle makes a start sound and the screen displays, it means that the vehicle is on normally.

Turn off the vehicle:

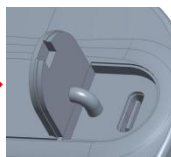
In the vehicle starting state, long press the switch for 3 seconds, the screen will be turned off, the vehicle will make a shutdown sound, then the vehicle has been closed

Toggle lighting effects:

After the vehicle is started, each time the switch is clicked, one kind of lamp effect will be changed.



Charging Type C port



After lifting the dustproof silicone cover, you can use the complimentary USB TypeC charging cable to charge, please bring your own adapter that meets the safety specifications

Battery Display

When the red box keeps flashing, it means that only 10% of the electricity is left, please charge it in time.



Speed Display

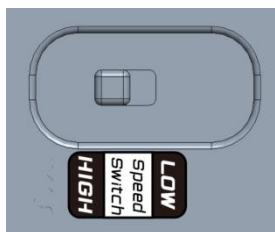
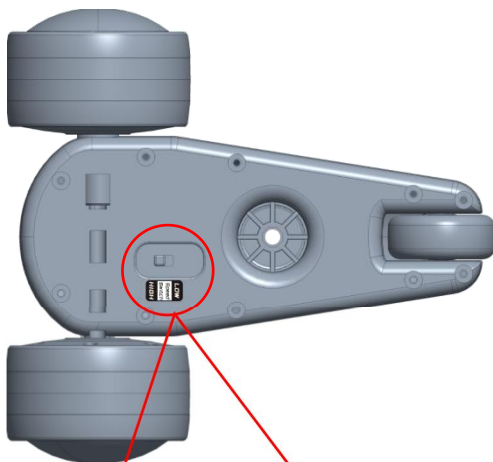
Rechargeable Light

The indicator light will light up when charging.

Bluetooth Indicator

After the device is turned on, Bluetooth is automatically turned on. Search for "FanttikRide N7" connection. If the indicator is on, the Bluetooth connection is successful

Instructions For Use






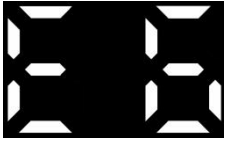
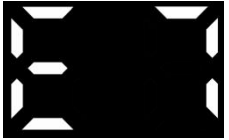

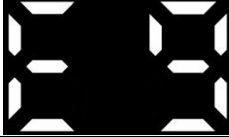
Speed Control Switch

When the switch is in Low gear, the vehicle can reach 1.7mph.

When the switch is in high gear, the vehicle can reach 4mph.

If the power is insufficient or the weight of the load is too large, the speed of the vehicle will decrease

Fault Analysis

Vehicle not starting	1、Open the seat and check that the battery wiring is secure; 2、Pry open the function button panel and check whether the cables on the back are abnormal; 3、Consult after-sales personnel;
Fault code 	1、Drive is not installed properly,Reinstall; 2、Pry open the function button panel and check whether the cables on the back are abnormal; 3、Consult after-sales personnel;
Fault code 	When the load is too large or the motor is stopped by external force for up to 15 seconds, the vehicle will start self-protection, and the vehicle will shut down within 3 seconds after prompting the E4 fault, and return to normal after restarting.
Fault code 	The drive device is faulty. Contact after-sales service personnel to replace it
   	Battery failure, please contact customer service to replace

929-693-6066 MON-FRI 9AM-5PM[ET]

www.fanttik.com

support@fanttik.com

METASEE LLC

12 GREENWAY PLZ STE 1161A HOUSTON,TX 77046-1203

Made in China

