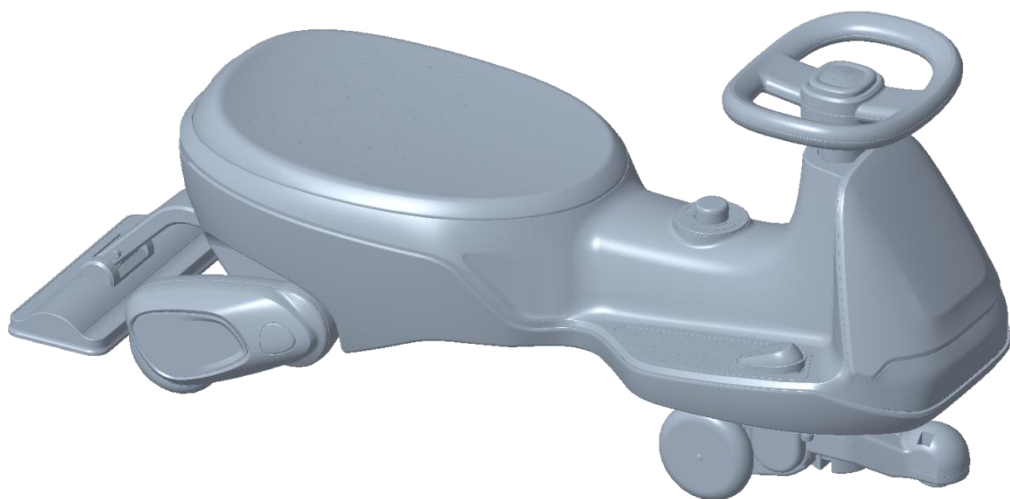


FanttikRide

GlideWiz™ N10 Classic

Electric Wiggle Car



ASTM F963,CPSIA,CA65



**Warning:Not suitable for
children under 36
months.Small parts.**

Read this manual carefully before use and keep it for future reference.

Catalogue

- Use warning -----1~4
- Product Information -----5
- Parts List-----6
- Parts Diagram-----7~8
- Assembly Step-----9~11
- Instructions For Use-----12~14
- Fault Analysis-----15

Safety Notice

WARNING!

- It should be used under adult guidance.
- Parents should ensure that children have the safety measures before used.
- The toy should be used with caution since skill is required to avoid falls or collisions causing injury to the user or third party.
- Products should be assembled by an adult. Protective equipment should be worn. Not to be used in traffic. Not suitable for children under 3 years. Choking hazard-small parts. In unassembled state, contains potentially hazardous small parts. Please keep out of the reach of small children. Pay attention to the potential hazards of using the toy in areas other than private grounds.
- During the use of vehicles, PU wheels may cause scratches and losses to hardwood boards.
- When the vehicle's driving load exceeds 150 lbs. PU wheels may cause scratches and damage to hardwood floors.
- General Safety:**
 - Where products need assembly they must always be assembled by an adult. As a parent/carer, it is also your responsibility to check the tightness of screws, nuts and bolts before each use and if necessary, adjust and retighten.
 - This product may contain small parts and it is your responsibility as a parent/carer to exclude children from the area during assembly due to small parts.
 - Remove Protective material and poly bags and dispose of them responsibly before giving the assembled product to your child.
 - Remember to retain these instructions for future reference.
- Positioning:**
 - Do not allow your child to ride at night or in poor light conditions.
 - Do not let your child play near steps, swimming pools/spas or other sources of water, on slopes, on streets or around cars, even if parked on your own property.
 - It is product is designed to be used on smooth surfaces and should not be used on soft ground or in the rain or snow. May not be suitable for carpet driving.

Safety Notice

WARNING!

-Before use:

- Dispose of all packaging material responsibly before giving this product to child.
- Check tightness of all components before giving this product to your child.

-During use:

- This product is only suitable for children 3 years and older.
- The toy should be used with caution since skill is required to avoid falls or collisions causing injury to the user or third parties.
- The maximum rider weight capacity for this product is 150 lbs. Overload may damage this product.
- Adult supervision is highly recommended when children play with wheeled toys. Please take care of your child.
- Do not allow the child to ride with bare feet or without suitable footwear.
- Ensure the child keeps clothing, hands, hair, fingers and feet away from moving parts.
- The use of protective gear including approved helmets, gloves and pad is recommended.
- Store this product at room temperature, do not leave it outside or uncared for.
- Never let any child play with the battery or charger at any time, or let them charge the product.
- Do not use if product is faulty or damaged.
- Do not tamper with the battery or electrical parts inside the product.

Charging the battery:

- All charging and recharging must be carried out by an adult.
- Do not attempt to use the product while it is being charged. When charging, all the functions will be cut off.
- Charging should be carried out under cover and in a well-ventilated area.
- Make sure the vehicle is powered off while charging.
- Always ensure the charger is plugged into a wall outlet. Do not use an extension.
- Do not charge near sources of potential sparks, fires or flames or where flammable gases, liquids and materials are stored.

Safety Notice

WARNING!

- During charging the battery and the charger may get hot.
- Only charge the battery for a maximum time of 20 hours.
- Always ensure that once the battery becomes discharged/flat that you recharge for the recommended time.Failing to do so will significantly shorten battery life.
- Only use the battery supplied with this product.The use of other batteries may cause damage to the motor,charger and subsequent wiring,which could lead to fire and/or explosion.
- Never short circuit the terminals of the battery,or any subsequent wiring.

Safety Notice

WARNING!

FCC Warning Statement

Changes or modifications not expressly approved by the party responsible for compliance could void the user's authority to operate the equipment. This equipment has been tested and found to comply with the limits for a Class B digital device, pursuant to Part 15 of the FCC Rules. These limits are designed to provide reasonable protection against harmful interference in a residential installation. This equipment generates uses and can radiate radio frequency energy and, if not installed and used in accordance with the instructions, may cause harmful interference to radio communications. However, there is no guarantee that interference will not occur in a particular installation. If this equipment does cause harmful interference to radio or television reception, which can be determined by turning the equipment off and on, the user is encouraged to try to correct the interference by one or more of the following measures:






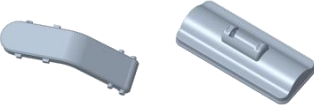


- Reorient or relocate the receiving antenna.
- Increase the separation between the equipment and receiver.
- Connect the equipment into an outlet on a circuit different from that to which the receiver is connected.
- Consult the dealer or an experienced radio/TV technician for help.

This device complies with part 15 of the FCC Rules. Operation is subject to the following two conditions: (1) This device may not cause harmful interference, and (2) this device must accept any interference received, including interference that may cause undesired operation.

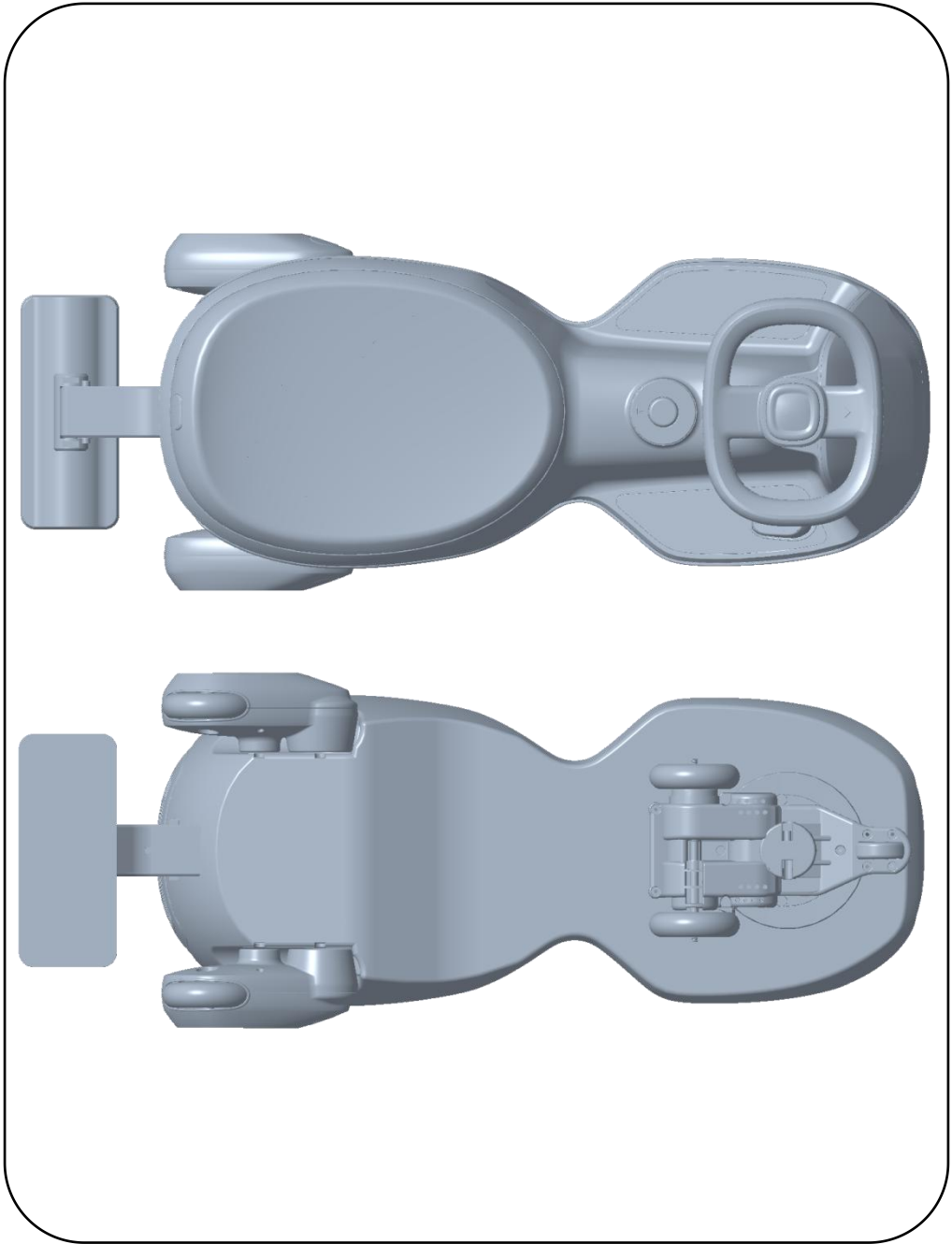
Product Information

Model number	N10 Classic
Battery	Lithium battery 7.3v 2500mAh
Material	PP、ABS、PU
Suitable age	More than 36 months
Load capacity	Max 150 lbs
Size of car	76 X 34 X 41.5 cm
Speed	1.7~3.1 mph
Battery life	60~90 minutes (The battery life will vary due to changes in weight and environment, please refer to the actual situation)
Charging time	2~2.5 hours (The product comes with a USB charging cable, please bring your own qualified adapter)
Charging mode	USB charging cable (Please bring your own USB adapter that meets safety standards)

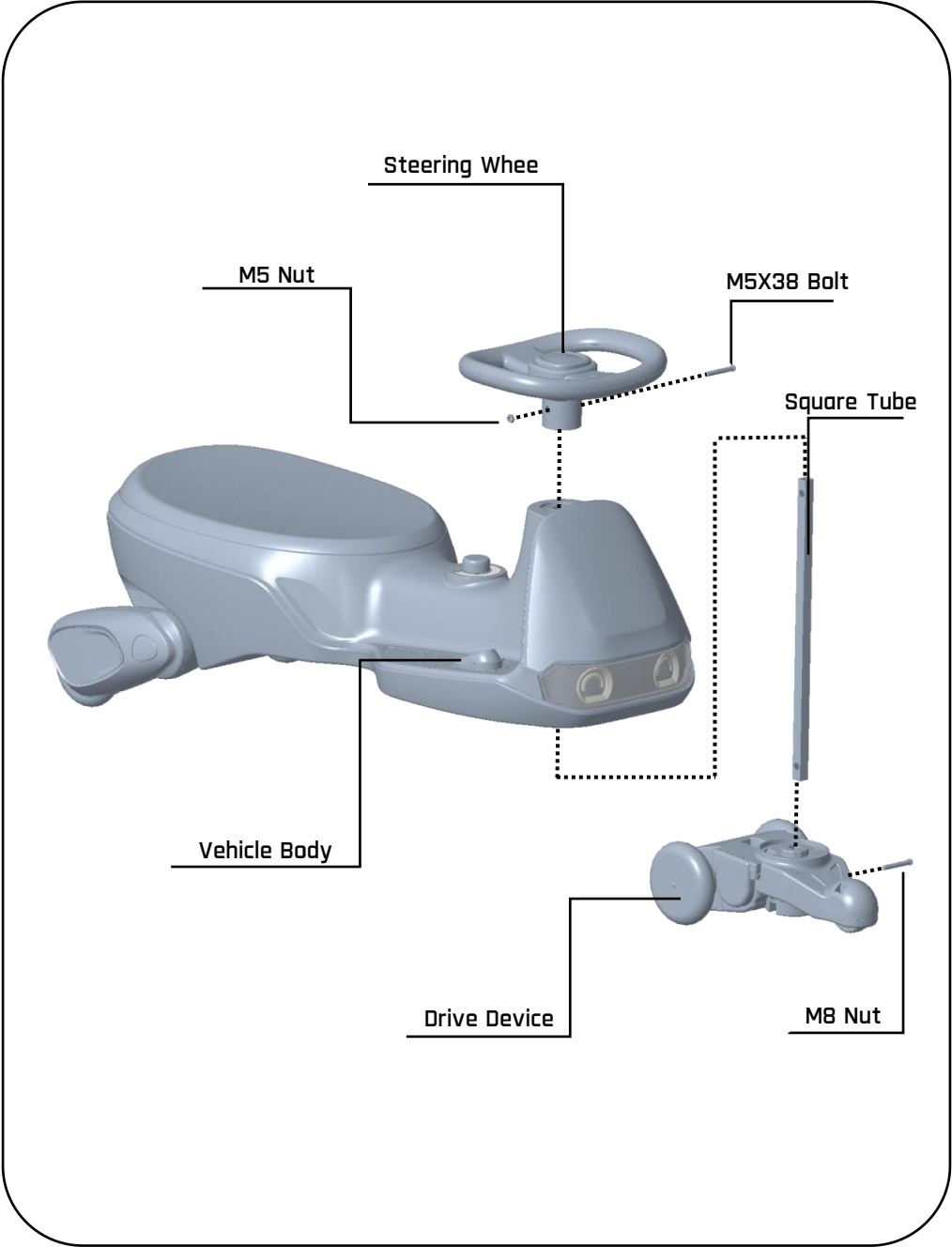
Parts List

Sequence	Part name	Picture	Quantity
1	Vehicle body		1
2	Drive device		1
3	Square tube		1
	Bolt-Nut-Washer (Installed on the square pipe)		4
4	Steering wheel		1
5	Mop components		1
6	USB charging cable		1
7	Instruction manual		1

Parts Diagram

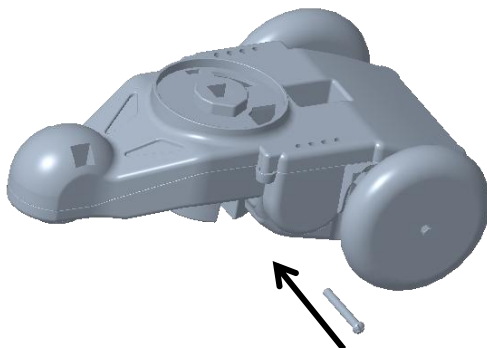
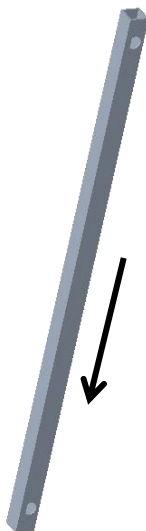


Parts Diagram



Assembly Step

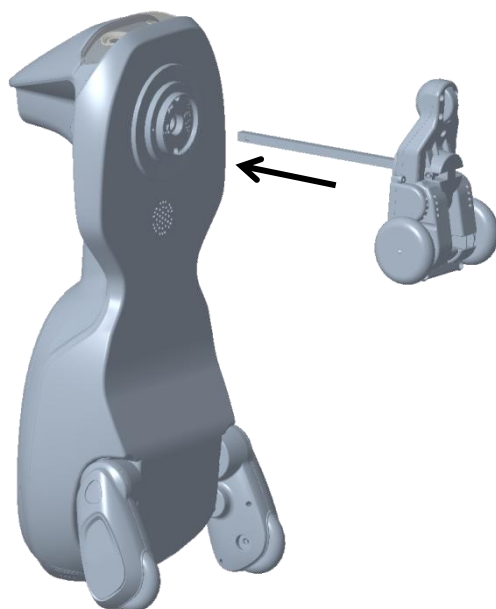
1



Align the square tube with the square notch on top of the Drive device and insert it. Take the included M5 bolt, use a screwdriver to tighten this bolt with the pre-installed nut on the Drive device, thereby securing the square tube to the Drive device.

Assembly Step

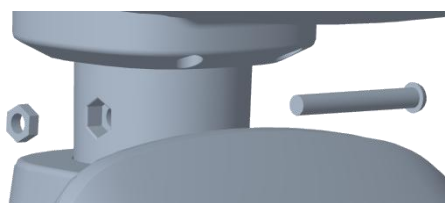
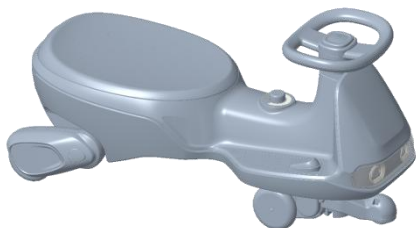
2



Pass the square tube that has been fixed to the Drive device through the circular hole in the bottom of the vehicle, and rotate the Drive device until it aligns with the direction shown in the diagram.

Assembly Step

3



Insert the steering wheel into the square tube in the direction shown in the diagram [with the steering wheel arrow pointing toward the front of the vehicle]. Use the included M5 bolt and nut to secure the steering wheel to the square tube [please place the M5 nut in the corresponding hexagonal groove].

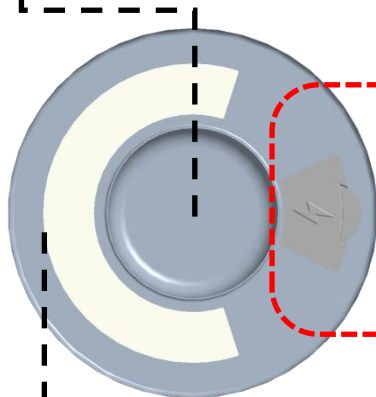
Instructions For Use

Start the vehicle:

Long press the switch for 2 seconds in the off state. When the vehicle makes a start sound and the screen displays, it means that the vehicle is on normally.

Turn off the vehicle:

In the vehicle starting state, long press the switch for 2 seconds, the screen will be turned off, the vehicle will make a shutdown sound, then the vehicle has been closed



Charging Type C port

After lifting the dustproof silicone cover, you can use the complimentary USB TypeC charging cable to charge, please bring your own adapter that meets the safety specifications

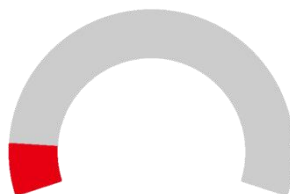
Lighting effects:



Lighting status when
fully charged



Lighting status in low battery



Lighting status when the
battery is about to run out

Instructions For Use

Bluetooth connection:

After powering on, Bluetooth will turn on automatically. Use your device to search for the Bluetooth name: “ FanttikRide N10 Classic ”. Once connected, you can play audio from your device. Each time the device is powered on, it will automatically reconnect to the last paired Bluetooth device. If your device fails to detect or connect to the Bluetooth, please check if another device is already connected, or restart the vehicle.

Adjust the volume:



Increase the volume:

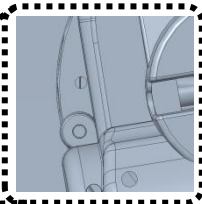
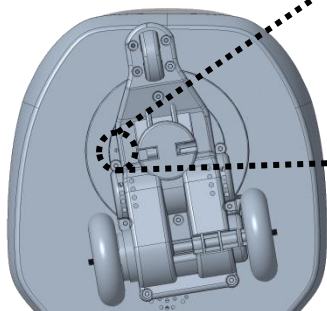
When playing Bluetooth music, rotating the knob clockwise can increase the playback volume, and the light will display blue. After adjustment, the light will switch to the battery level display.



Decrease the volume:

When playing Bluetooth music, rotating the knob counterclockwise can reduce the playback volume, and the light will display blue. After adjustment, the light will switch to the battery level display.

Speed adjustment:

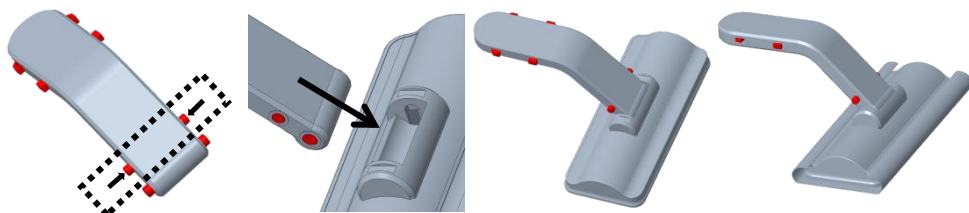
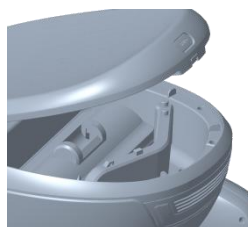


The vehicle is set to high speed by default at the factory. You can use a tool to reach into the circular hole in the bottom of the vehicle and adjust the internal switch to the low-speed gear.

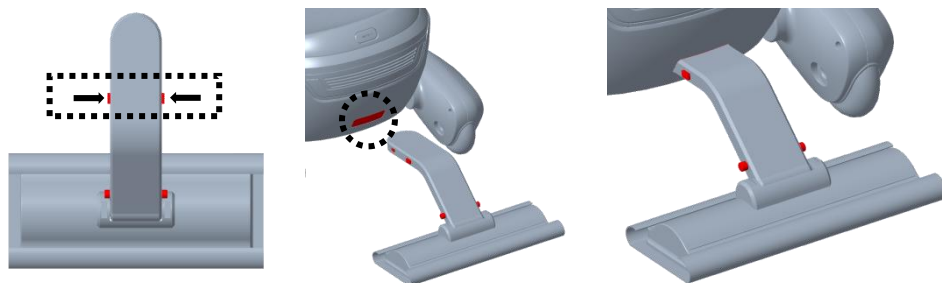
Instructions For Use

Installation and use of the mop

Press and hold the quick-release button at the rear of the seat, then take out the mop handle, mop head, and disposable mop cloth from the storage compartment under the seat.



Press the cylindrical button on the mop handle in with your hand, insert the mop into the circular slot of the mop head, then release the cylindrical button to secure the mop handle and the mop head. Please ensure they are firmly fixed before use. Lay the disposable mop cloth under the mop head, and press the excess part onto the hook-type hook-and-loop fastener attached to the top of the mop head.



Press the square button on the mop handle in with your hand, insert the mop handle all the way into the bottom of the square slot under the vehicle body, then release the square button to secure the mop to the vehicle body. Please ensure it is firmly fixed before use. If you want to detach the mop from the vehicle body, press and hold the square button and pull the mop outwards.

Fault Analysis

Only one wheel of the product rotates	For the safety of turning, this product is designed with a single-sided driving wheel, and the other wheels are auxiliary wheels.
The product fails to power on	Please open the seat and check if the battery is connected.
Charging time is too slow	Please check if the output current of the charger being used is only 1A. You can use a USB adapter with an output current of up to 3A.

929-693-6066 MON-FRI 9AM-5PM[ET]

www.fanttik.com

support@fanttik.com

METASEE LLC

12 GREENWAY PLZ STE 1161A HOUSTON,TX 77046-1203

Made in China

