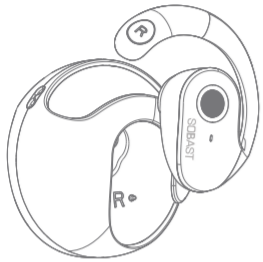


T26pro
真无线蓝牙耳机



使用说明书
使用前请阅读使用说明书

产品使用简介

- (1) 除说明书有特殊标示的操作方式以外,请勿尝试拆卸或更换产品内的任何零件。
(2) 请勿将产品放入水或其他任何液体中,此产品非防水设计。
(3) 如果有何液体不小心进入产品内时,请立即断开连接并移开此产品。
(4) 为避免触电,请在安装或卸载产品时,确保手上没有沾水。
(5) 请勿将此产品放置于热源附近或直接暴露在火源附近。
(6) 请勿将本产品放置在有强大电磁力的环境中,否则会导致产品故障。

包装清单

	耳机X2		充电盒X1
	使用说明书X1		充电线X1
	挂绳X1		

产品示意图



产品规格

蓝牙版本:V5.4
传输距离:10M
电池容量:50mAh
使用时长:约4小时(耳机)
充电时间:约1.5小时(耳机)
额定输入:5V~30mA

充电盒规格

电池容量:300mAh
充电时间:约1.5小时
额定输入:5V~250mA
(所有技术信息以实际性能为准)

给充电盒充电

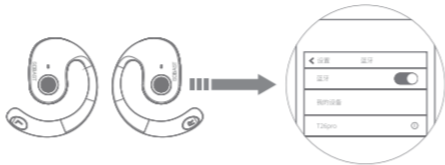
用Type-C充电线连接充电盒到5V电源适配器。
(温馨提示:关闭充电盒,出现充电盒绿灯闪烁时,请及时给充电盒充电。)

LED指示灯状态

充电盒指示灯	<ul style="list-style-type: none">● 给充电盒充电(未充满):白灯闪烁● 充电盒充满电:白灯长亮● 放电显示:绿灯长亮● 低电量显示:绿灯闪烁
耳机指示灯	<ul style="list-style-type: none">● 开机:白绿灯交替闪烁● 关机:白灯闪烁三次● 左右耳机配对:白绿灯交替闪烁● 配对成功:灯灭

产品操作说明

1. 开机
方式一:从充电仓内取出,耳机自动开机。
方式二:长按耳机功能触摸键3S,耳机开机。
2. 关机
方式一:将耳机放回充电仓,关上充电仓上盖,耳机关机。
方式二:左右耳机开机状态下,长按耳机功能触摸键5S后,耳机关机。
3. 配对
步骤一:打开充电仓上盖取出耳机,双耳自动配对。
步骤二:打开智能设备的蓝牙列表,搜索“T26pro”并连接(支持单耳使用)



触控按键的操作

音乐播放

左/右耳机操作

- 上一曲:双击左耳机(L)功能键
下一曲:双击右耳机(R)功能键
音量+:三击右耳机功能键
音量-:三击左耳机功能键
暂停/播放:单击任意耳机功能键

电话免提

左/右耳机操作(来电状态下)

- 接听:单击任意耳机功能键
拒接:长按任意耳机功能键2S松开
挂断:单击任意耳机功能键

语音助手

左/右耳机操作

- 长按任意耳机功能键1.5秒

音乐/游戏模式

左/右耳机操作

- 四击任意耳机功能键切换音乐/游戏模式

恢复出厂设置

开机后未与手机配对状态下,连续单击耳机功能键5次清除配对信息后关机。

产品中有害物质名称及含量

产品中有害物质名称及含量

部件名称	有害物质					
	铅(Pb)	汞(Hg)	镉(Cd)	六价铬(Cr(VI))	多溴联苯(PBB)	多溴二苯醚(PBDE)
印刷电路组件	○	○	○	○	○	○
外壳等小结构件	○	○	○	○	○	○
本表格依据SJ/T 11364的规定编制。 ○:表示该有害物质在该部件所有均质材料中的含量均GB/T26572规定的限量要求以下。 ×:表示该有害物质至少在该部件的某一均质材料中的含量超出GB/T26572规定的限量要求。 印刷电路板组件*:包括印刷电路板及其零部件,电子元器件等,根据产品类型不同,您所购买的产品可能不会含有以上所有部件						
	在中华人民共和国境内销售的电子电气产品必须标识此标志,标志内的数字代表在正常的使用状态下的产品的环保使用期限。					

保修卡

尊敬的用户, 本保修卡是您将来申请保修的凭证, 请您配合销售商填写并妥善保管备用!

用户信息		
用户姓名		电子邮箱
联系电话		邮政编码
通讯地址		

产品信息		
产品名称		产品型号
产品条码/编号/批号		

销售商信息		
名称		
地址		
联系电话		
销售日期		邮政编码
备注		发票号码

制造商:东莞市索贝斯数码科技有限公司
地址:广东省东莞市清溪镇清溪科技路411号1号楼
电话:0755-89368131
网址:www.sobast.com
邮箱:sobast@sobast.com

FCC声明

根据FCC规则第15部分, 本设备经过测试, 符合B类数字设备的限制。这些限制旨在提供合理的住宅设施中的有害干扰防护。该设备产生使用并可辐射射频能量, 如果未按照规定安装和使用该指示可能会对无线电通信造成有害干扰。然而, 有不能保证在特定安装中不会发生干扰。如果这个设备有对无线电或电视接收造成有害干扰, 可通过转动来确定设备, 关闭和打开时, 鼓励用户尝试通过一个或多个以下更多措施

——重新定向或重新定位接收天线。

——增加设备和接收器之间的间距。

——设备连接到与接收器不同的电路上的插座已连接。

——请咨询经销商或经验丰富的无线电/电视技术人员以获得帮助。

此设备符合FCC规则的第15部分。操作受以下两个条件限制条件

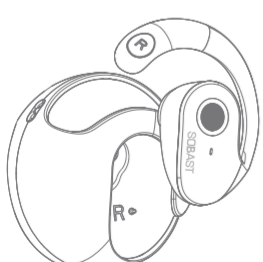
(1) 本装置不得引起有害干扰。

(2) 本装置必须接受任何接收到的干扰, 包括可能导致意外操作的干扰。

未经合规责任方明确批准的变更或修改可能使用户对设备的操作权限失效。

SOBAST

T26pro
True wireless Bluetooth headphones



Instruction manual
Please read the instruction manual before use

Usage Instruction

- (1) Don't attempt to disassemble the unit and change any part, except there is operation method mentioned in the manual.
(2) Don't expose the unit to liquid, moisture or humidity, since it is not a waterproof product.
(3) Disconnect the unit with your BT device and move it to the safe area if the liquid get inside the unit.
(4) Don't assemble or disassemble the unit to avoid electric shock, if there is water on your hands.
(5) Don't expose the unit to extremely high temperature or dispose of the unit in fire as it will result in an explosion.
(6) Don't place the unit in an electromagnetic interference environment to avoid malfunction.

Packing list

	Headphone × 2		Charging case × 1
	User manual × 1		Type-C × 1
	Lanyard X1		

Product schematic description



Charging compartment

Bluetooth version: V5.4
Transmission distance: 10M
Battery capacity: 50mAh
Usage time: approximately 4 hours (headphones)
Charging time: approximately 1.5 hour (for headphones)
Rated input: 5V~30mA

Charging case specification

Battery capacity: 300mAh
Charging time: approximately 1.5 hours
Rated input: 5V~250mA
(All technical information is subject to actual performance)

Charge the Charging case

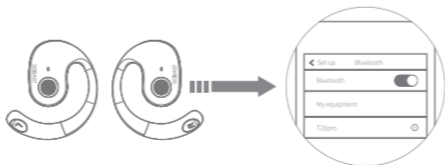
Connect the Type-C cable to the 5V power adaptor, and another end to the charging port of the Charging case.
(Kind reminder: When the white indicator light of the charging compartment flashes, please charge the charging compartment in a timely manner.)

LED Indicator Status

Charging compartment indicator light	<ul style="list-style-type: none">● Charge the charging compartment (not fully charged): The white light flashes● Charging bin is fully charged: white light is long on● Discharge display: The green light is long on● Low battery display: Blinking green
Earphone indicator light	<ul style="list-style-type: none">● Power on: Blinking white and green alternately● Power off: white light flashes three times● Pair left and right earphones: blinking white and green alternately● If the pair is paired successfully, the indicator is off

Product operating instructions

1. Power on
Method 1: Remove from the charging compartment, the headset automatically turns on.
Method 2: Long touch the MF button of the headphones for 3s to turn on the headphones.
2. Power off
Method 1: Put the headphones into the charging case directly and close the case to turn off.
Method 2: Long touch the MF button of the headphones for 5s to turn off the headphones.
3. Pairing to the BT device
Step 1: Open the upper cover of the charging compartment to remove the headphones, binaural automatic pairing.
Step 2: open the BT list of smart devices, search "T26pro" and connect (single ear use is supported).



Operation of touch buttons

Music playback

Left/right headphone operation

- Previous: Double click on the left headset (L) function key
Next: Double click the right headset (R) function key
Volume +: Hit the right ear function key three times
Volume -: Three clicks left ear function key
Pause/Play: Click any headset function key

Phone Hands Free

Left/right headphone operation (in incoming call state)

- Answer: Click on any headphone function key
Reject: Press and hold any headphone function key for 2 seconds to release
Hanging up: Click on any headphone function key

Voice Assistant

Left/Right Earphone Operation

- Hold down any headset function key for 1.5 seconds

Music/Game mode

Left/Right Earphone Operation

- Four clicks of any headset function key to switch music/game mode

Restore factory settings

After turning on the phone without pairing state, click the headset function key 5 times to clear the pairing information and then turn off the phone.

Name and content of hazardous substances in products

Name and content of hazardous substances in products

Part Name	Harmful materials					
	Pb	Hg	Cd	Cr(VI)	PBB	PBDE
Printed circuit assembly	○	○	○	○	○	○
Small structural parts such as shell	○	○	○	○	○	○

This form is compiled in accordance with SJ/T 11364.
○: Indicates that the content of the hazardous substance in all homogeneous materials of the part is in below the limit requirements specified in GB/T 26572.
×: Indicates that the content of the hazardous substance in at least one of the homogeneous materials of the part exceeds the limit requirements specified in GB/T 26572.
The parts marked with "×" on the form are all harmful due to the limitations of global technological development. Substitution of substances.
Printed circuit board components*: including printed circuit boards and their parts, electronic components, etc. Depending on the product model, the product you purchased may not contain all the above components

	Electronic and electrical products sold in the People's Republic of China must mark this Logo, the number in the logo represents the product under normal use Environmental protection use period.
--	--

Warranty Service

Dear user, this warranty card is the proof of your future warranty application, please cooperate with the seller to fill it out and keep it for future use!

User info		
User name		Email
Contact number		Postal code
Mailing address		

Product information		
Product name		Product number
Product barcode/Serial number /Batch number		

Vendor information		
Name		
Address		
Contact number		
Sales date		Postal code
Remark		Invoice number

Manufacturer: Dongguan Sobast Digital Technology Co., Ltd
Address: Building 1, No. 411 Qingxi Science and Technology Road, Qingxi Town, Dongguan City, Guangdong Province
Tel: 0755-89368131
Website: www.sobast.com
Email: sobast@sobast.com

FCC Statement

According to Part 15 of the FCC Rules, this device has been tested to meet the restrictions for Class B digital devices. These restraining decrees in providing reasonable protection against harmful disturbances in residential facilities. The device generates and uses radiofrequency energy. If this instruction is not installed and used in accordance with the regulations, it may cause harmful interference to radio communications. However, there are no guarantee that interference will not occur in a particular installation. If this device has built for radio or television reception into harmful interference, the device can be determined by turning it off and on when the user is encouraged to try to pass through one or several more measures below

—— Redirect or reposition the receiving antenna.

—— Increase the distance between device and receiver.

—— Sockets connected to devices on circuits different from the receiver are connected.

—— Please consult a dealer or experienced radio/TV technician for assistance.

This device complies with Part 15 of the FCC Rules. The operation is restricted by the following two conditions

(1) The device shall not cause harmful interference.

(2) The device must accept any received interference, including interference that may cause unexpected operation.

Changes or modifications that are not explicitly approved by the compliance responsible party may invalidate the user's permission to operate the device.

This equipment complies with FCC radiation exposure limits set forth for an uncontrolled environment. This equipment should be installed and operated with minimum distance 0cm between the radiator and your body.

SOBAST