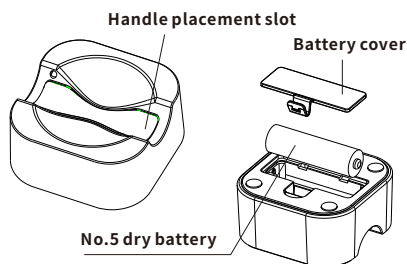


120 mm

NAIL ART WIRELESS PEN HOLDER

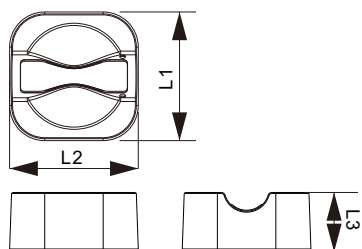
OPERATION INSTRUCTION

1、PRODUCT INFORMATION



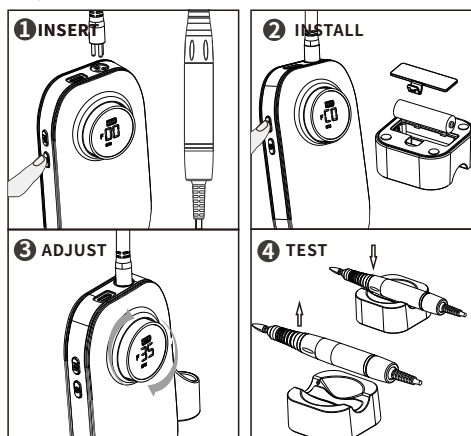
2、SPECIFICATION PARAMETERS

Input	Battery	L1	L2	L3
1.5V	No.5 dry battery	66mm	66mm	31mm



70

3. INSTRUCTIONS



STEP:

1. Insert the controller and turn on the device: Insert the controller cable into the host and press and hold the ON/OFF button for 2 seconds to turn on the device.
2. Matching the host and wireless pen holder (pre configured by the factory): Press and hold the F/R key on the host for 5 seconds, and the display screen will show C0. At this point, insert the pen holder into the battery, and the automatic matching will be successful. The host display screen will then display 00 again.
3. Speed regulation and use: Rotate the host encoder to adjust the speed, and the handle starts working.
4. Place the handle flat into the pen holder, and the handle will automatically pause working. The pause symbol will appear on the main display screen. After picking up the handle, the pause symbol on the main display screen will automatically disappear, and the handle will resume

正面

NOTE:

1. The factory configured dry battery has a usage time of 3-4 months.
2. Do not store in damp or sunny environments.
3. Do not soak the product in water to avoid machine malfunction
4. Please do not approach the fire source as there are batteries inside the machine.
5. If not used for a long time, please remove the battery from the product and store it.
6. If the product is unresponsive, please check if the battery needs to be replaced.

FCC WARNING

This device complies with part 15 of the FCC Rules. Operation is subject to the following two conditions:

- (1) this device may not cause harmful interference, and
- (2) this device must accept any interference received, including interference that may cause undesired operation.

Any changes or modifications not expressly approved by the party responsible for compliance could void the user's authority to operate the equipment.

NOTE: This equipment has been tested and found to comply with the limits for a Class B digital device, pursuant to Part 15 of the FCC Rules. These limits are designed to provide reasonable protection against harmful interference in a residential installation. This equipment generates, uses and can radiate radio frequency energy and, if not installed and used in accordance with the instructions, may cause harmful interference to radio communications.

However, there is no guarantee that interference will not occur in a particular installation. If this equipment does cause harmful interference to radio or television reception,

which can be determined by turning the equipment off and on, the user is encouraged to try to correct the interference by one or more of the following measures:

- Reorient or relocate the receiving antenna.
- Increase the separation between the equipment and receiver.
- Connect the equipment into an outlet on a circuit different from that to which the receiver is connected.
- Consult the dealer or an experienced radio/TV technician for help.

To maintain compliance with FCC's RF Exposure guidelines, This equipment should be installed and operated with minimum 20cm distance between the radiator and your body: Use only the supplied antenna.

背面