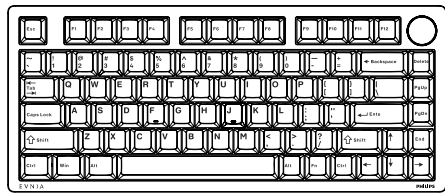


EVNIA

6000 Series

Customizable gaming keyboard  
with RGB backlight



SPK8618

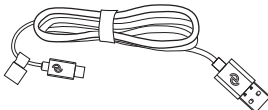
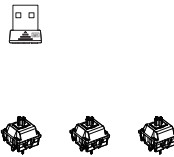
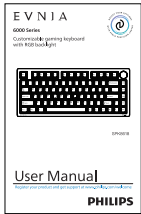
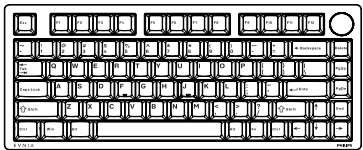
## User Manual

Register your product and get support at [www.philips.com/welcome](http://www.philips.com/welcome)

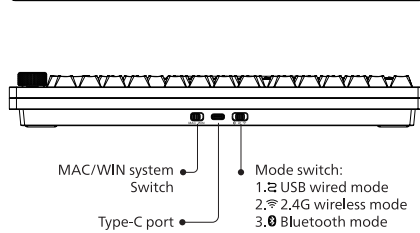
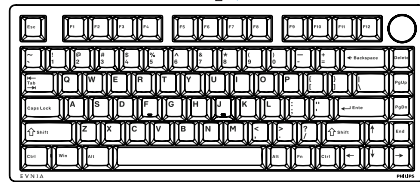
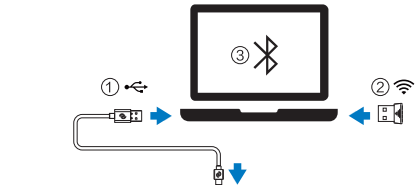
PHILIPS



### Package contents

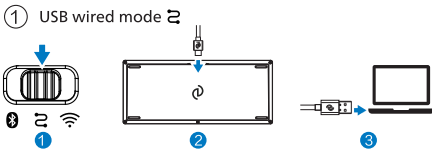


### Setting

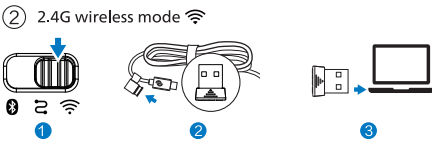


Keyboard reporting rate: Wired mode 1000Hz, 2.4G wireless mode 500Hz, Bluetooth mode 125Hz  
Note: The images in this manual are all schematic diagrams and may deviate from the actual product. Please refer to the actual product.

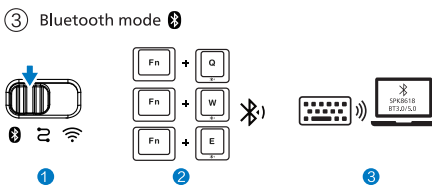
### Connection mode



Set the toggle switch to 2, insert the Type-C end of the standard USB cable into the corresponding port of the keyboard, and insert the USB end of the cable into the corresponding port of the computer to use.



2.4G Wireless connection: One USB receiving device can be connected at the same time  
2.4G Wireless Device Name: 2.4G Wireless Receiver  
Set the toggle switch to 2, plug the wireless receiver into the USB port, now you can use the keyboard in 2.4G mode.  
2.4G mode re-pairing: Hold down the Fn+R key combination for 3 seconds, the R key rapidly emits a green light, then plug the wireless receiver into the USB port, and the green light of the R key goes off after the pairing is completed.



Bluetooth three-channel connection: just one Bluetooth device can be connected at the same time, and maintain the code information  
Bluetooth device name: SPK8618 BT3.0/SPK8618 BT5.0

Set the toggle switch to 0 and perform the following operations to connect the Bluetooth device  
Bluetooth channel 1: Hold down the Fn+Q key combination for 3 seconds. The Q key rapidly emits a blue light and establishes a connection with the Bluetooth device. After the pairing is complete, the device recovers.  
Bluetooth channel 2: Hold down the Fn+W key combination for 3 seconds. The W key rapidly emits a blue light and establishes a connection with the Bluetooth device. After the pairing is complete, the device recovers.  
Bluetooth channel 3: Hold down the Fn+R key combination for 3 seconds. The R key rapidly emits a blue light and establishes a connection with the Bluetooth device. After the pairing is complete, the device recovers.

Bluetooth device channel switching:  
After the Bluetooth device is paired, press Fn+Q to switch to the connected device of Bluetooth channel 1, press Fn+W to switch to the connected device of Bluetooth channel 2, and press Fn+E to switch to the connected device of Bluetooth channel 3.

Sleep and wake up:  
In 2.4G Wireless or Bluetooth connection, if the keyboard device is not used within three minutes, the keyboard automatically enters the level-1 sleep state, the backlights are turned off, the wireless function is disconnected, and the keyboard function is awakened to the previous state when any key is pressed, if the keyboard device is not used within thirty minutes, the keyboard automatically enters the level-2 sleep state, the backlights are turned off, the wireless function is disconnected, and the keyboard function is awakened to the previous state when any key is pressed. Keyboard backlights do not go out in wired mode.

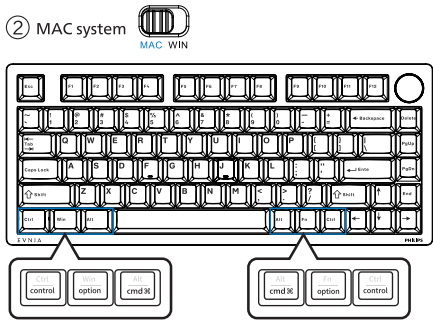
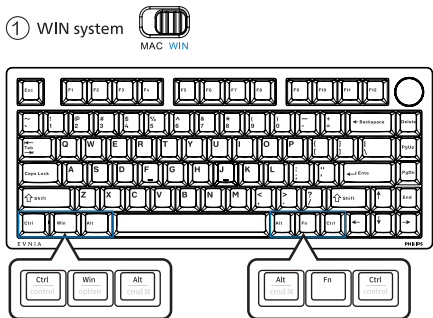
### Support

[www.philips.com/support](http://www.philips.com/support)

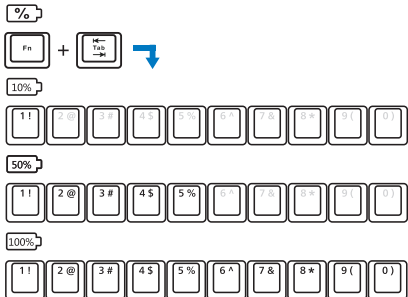


### WIN/MAC system switch

Slide the mode switch to WIN to enter the WIN system, and slide the mode switch to MAC to enter the MAC system

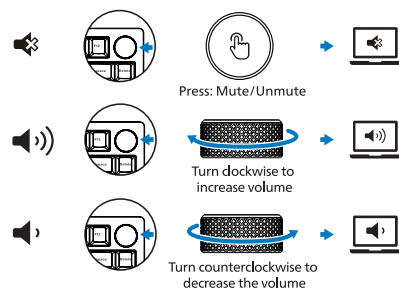


### Battery query in wireless mode

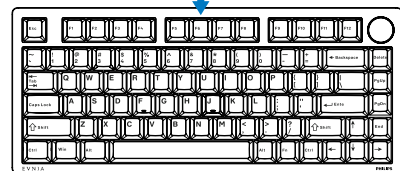
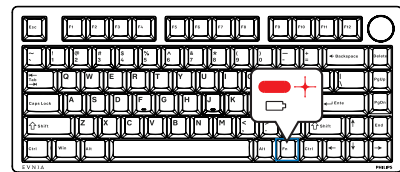
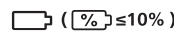


press the combination key Fn+TAB, the backlight is off, corresponding key 1! To 0) lighting shows the power ratio, for example: 1! on, indicating 10% power, 1! and 2! on, indicating 20% power, And so on, (The light color is Less than 30% red, less than 50% yellow, more than 50% green).

### Quick volume adjustment



### Charging and low battery indicator function



1. The charging indicator is the Fn key indicator, and the status is as follows: When the battery is low, the red light blinks quickly; When charging, the indicator light is steady red; After full, it will turn green for 60 seconds and become the default light effect.  
2. If the voltage is lower than 3.45V, the keyboard backlight turn off, and the battery indicator flashes red until hibernation or shutdown. If the voltage is lower than 3.2V, the keyboard shut down.

### Fn+combination key multimedia function description

KEY	Windows	MAC
F1	Screen brightness decrease	
F2	Screen brightness increase	
F3	Task View	Multitasking window
F4	My computer	Launchpad
F5	F5	
F6	F6	
F7	Previous song	
F8	Play/pause	
F9	Next song	
F10	Mute/unmute	
F11	Volume down	
F12	Volume up	
ESC	Factory reset (Press and hold for more than 3 seconds)	
Win	Lock win/Unlock	
Space	Turn off/on the backlight	
[	Light change direction adjustment (partial light effect)	
]	Cycle to the next color (RGB- red - green - blue - yellow - purple - ice blue - White)	
←	The partial dynamic backlight speed decreases (from 100% to 75% (default) to 50% to 25% to 0), and the direction keys indicator flashing three times when it slows down to the slowest speed.	
→	The partial dynamic backlight speed increases (from 0 to 25% to 50% to 75%(default) to 100%), and the direction keys indicator flashing three times when it reaches the fastest speed.	
↑	The light brightness can be adjusted (0-25%-50%-75%-100% (default), and the direction keys indicator flashing three times when increased to the brightest level.	
↓	The light brightness can be adjusted from (from 100% (default) to 75% to 50% to 25% to 0), and the direction keys indicator flashing three times when reduced to the darkest level.	
End	Home key	

Fn+	Del	Cyclic switching 16 kinds built-in light effects mode : Neon Wave(default)-Reactive-Sine Wave-Windmill-Waterfall-Blossom-Game mode (ESC, A,S,D,W, up and down left and right arrow keys light up blue)-Fixed-Breathing-Rainbow-Reactive Collision-Raindrops-Spiral-Ripple-Twinkle-starry-Snake.
-----	-----	---

### Technical specifications

- Connectivity: USB 2.0/2.4G wireless/ Bluetooth 3.0+5.0
- Wireless effective distance: About 10 m(2.4G wireless)/10 m (Bluetooth)
- Top and bottom cover material: Aluminum alloy
- Number of keys: 81 keys
- Switch type: 50 million lifetimes mechanical switches
- Simultaneous input: Full keys conflict-free (wired mode)
- Programmability: Full keys programmable
- Backlight: RGB
- Lighting area: Keys
- Cable: USB A to USB C braided cable (1.6 mm)
- Battery: Rechargeable Lithium battery(Default 4000 mAh, PLUS version is 8000mAh)
- Product dimension: 322\*137\* 42.3 mm
- Product weight: Basic version is about 1460g, PRO version is about 1530g, PLUS version is about 1480g (not including cable)
- Operating temperature range: 0°C-40°C
- Operating humidity range: 10%~ 85%

### System requirements

#### •Product requirements

- Available USB port;
- Windows 7, Windows 8, Windows 10 or later versions; Android 3.2 or later versions; Mac OS 10.5 or later versions;

#### •EVNIA PRECISION CENTER software requirements

- Windows 10 or later;
- Internet connection available for software installation;
- 3,500 MB of free hard disk space;

#### Set up your device with the EVNIA PRECISION CENTER software

- Download and install the EVNIA PRECISION CENTER software.
- Connect your device to your computer.
- You can customize your device with EVNIA PRECISION CENTER software.

Register your product and get support at [www.philips.com/welcome](http://www.philips.com/welcome)

### Warranty card | English

Dear Customer:  
For all hardware products included in the package, we will provide free warranty service to customers who hold this warranty card within one year from the purchase date. Other warranty regulations are in accordance with the "Microcomputer Commodity Maintenance, Repair, Replacement and Refund Responsibility Provisions" of the State. Meanwhile, this service is only applicable to products with quality problems, and does not include compensation for the loss of interests of the purchaser or any direct or indirect losses caused by any other unexpected circumstances.  
Please register your product on the Philips official website and obtain support: [www.philips.com/welcome](http://www.philips.com/welcome)

Products falling into any of the following categories are not eligible for the three-pack policy:  
1. Without valid three-pack certificates and invoices (except those that can prove the product is within the three-pack validity period), or beyond the three-pack validity period, or altered the three-pack certificates arbitrarily.  
2. The product model and serial number do not match those indicated on the three-pack certificate.  
3. The model, serial number, or production date code on the product has been changed, deleted, or is difficult to identify.  
4. Defects caused by excessive use beyond the expected purpose, such as continuous use in a commercial environment.  
5. Damaged due to improper use, maintenance, and storage as required by the product user manual.  
6. Damaged during use due to the use of pirated software or computer viruses.  
7. Repair or modification of the product by unauthorized repair service points or personnel.  
8. Damaged due to unavoidable force.  
9. Damaged during use due to accidental events, signal interference, or other influencing factors that result in wireless connection.  
10. Normal wear defects, or natural wear parts.  
11. Products that do not work properly because they have not been used in the country/region where they were originally designed, manufactured or approved for use  
This can happen with products,

The product serial number must be consistent with the actual product. This certificate is the main tool of after-sales service, please keep it properly if you need technical support, please show this warranty card, we will provide high-quality professional service.

Commodity Information	Commodity Information	
Place of origin		
Product model		
Factory number		
User Information	User name	
User address		
Contact number		
Postal code		
Seller Information	Seller name	
Vendor address		
Contact number		
Postal code		
Sale date		
Invoice number		
Dealer's seal		
Dear users, the above information is filled in by the seller, please understand and cooperate, thank you. The following information will be filled in by the maintenance unit and will be returned to you.		
Repair Information	Maintenance Unit name	
Address		
Contact number		
Postal code		
Maintenance Receipt number		
Maintenance Date		
Maintenance Personnel signature		

2025 © Top Victory Investments Limited . All rights reserved.

Philips and the Philips Shield Emblem are registered trademarks of Koninklijke Philips N.V. and are used under license.

This product has been manufactured by and is sold under the responsibility of Top Victory Investments Limited , and Top Victory Investments Limited is the warrantor in relation to this product.

Specifications are subject to change without notice



The Bluetooth® word mark and logos are registered trademarks owned by Bluetooth SIG, Inc. and any use of such marks by MMD Hong Kong Holding Limited is under license. Other trademarks and trade names are those of their respective owners.

Register your product and get support at: [www.philips.com/welcome](http://www.philips.com/welcome)

Made in China