

**G633**

# Instruction manual

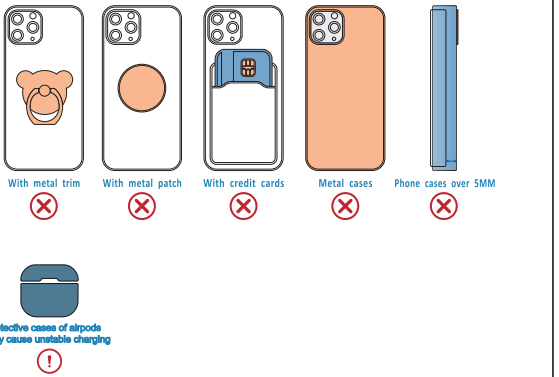


### 3 in 1 Wireless charger

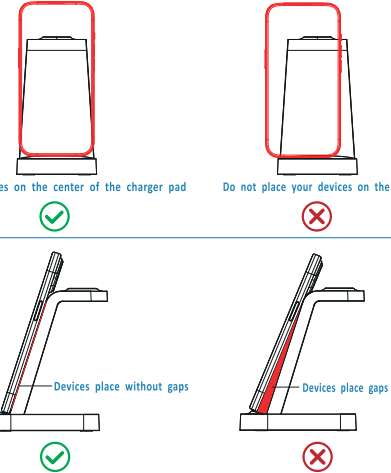
## Wireless Charging Guide

Please use the USB-A Adapter that comes with the package or the quick charger 2.0 or 3.0 chargers with USB-A ports are recommended.

## Charging with Cases

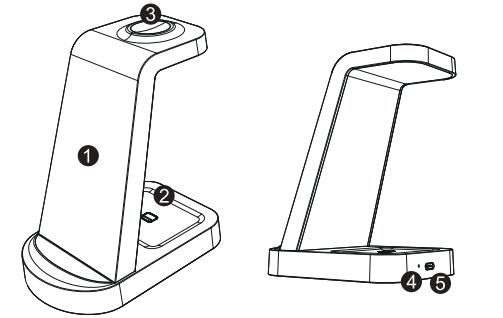


## Direct charging tip



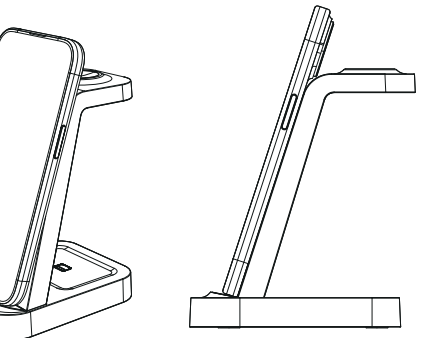
## 1. Introduction:

1. Wireless charging area of mobile phone
2. Charging area of Bluetooth headset
3. Wireless charging area of watch
4. Operating indicator
5. TYPE-C Female

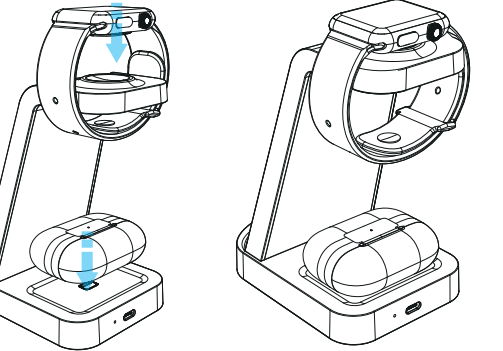


eration instructions:

arging the mobile phone: Put the mobile phone upright in the wireless charging mobile phone, and you can see the "Charging indicator" on the display of the phone, showing that it is being charged properly. (Attention: The phone cannot be charged when placed horizontally)



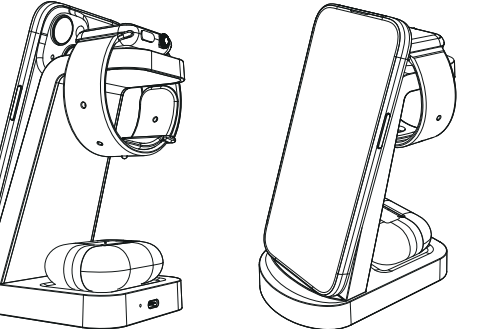
**2.2 Charging the watch:** Put the watch on the wireless charging area of watch, and align the magnets; the "Charging indicator" on the watch will light up, indicating that it is being charged properly.





**2.3 Charging the Bluetooth headset:** Please put the Bluetooth headset at the center of the charging area.

2.4 This product needs to be powered with an adapter with a power of 9V  $\pm$  2A and connected to the type-c port. When the bottom power indicator is on, it means that the power supply is connected.

2.5 Operating indicator: The blue working indicator is always on during the charging process of the mobile phone, which is off when it is not being charged or fully charged; it will flash in case of any charging fault.



**Specifications:**

Name	3 in 1 wireless charger	Model	G633
Product size	107*76*131.2(mm)	Power Supply Port	Type
Input	9V  2A, 9V  3A	Maximum output power	18W

### Matters needing attentio

1 When charging the device, do not use a protective cover with a thickness of an 5mm, and do not use a protective cover with a metal sheet.

2 Do not put metal foreign objects in the charging

3 When charging, please aim the device at the center of the charging

### Compatibility Sheet:

Smart phone  
 iPhone 8/iPhone 8 Plus/iPhone X/iPhone XR/iPhone XS/iPhone XS Max/  
 iPhone 11/iPhone 11 Pro/iPhone 11 Pro Max/iPhone SE (2nd generation)/iPhone 12/  
 iPhone 12 Pro/iPhone 12 Pro Max/iPhone 13/iPhone 13 Pro/iPhone 13 Pro Max/  
 iPhone SE (3rd generation)/iPhone 14/iPhone 14 Plus/iPhone 14 Pro/iPhone 14 Pro  
 Max/iPhone 15/iPhone 15 Plus/iPhone 15 Pro/iPhone 15 Pro Max/iPhone 16/iPhone 16 P  
 iPhone 16 Pro/iPhone 16 Pro Max and other phones that support wireless charging.

## 2 Smart Watch

3 Earbuds  
AirPods Pro 1, AirPods Pro 2, AirPods 4/3/2 Note: The charging box A1602/A2802  
AirPods 2 does not support wireless charging. Please check whether the earphone  
charging case supports wireless charging before use.

### FCC Warning

This device complies with part 15 of the FCC Rules. Operation is subject to the following two conditions: (1) This device may not cause harmful interference, and (2) this device must accept any interference received, including interference that may cause undesired operation.

Any Changes or modifications not expressly approved by the party responsible for compliance could void the user's authority to operate the equipment.

This equipment has been tested and found to comply with the limits for a Class B digital device, pursuant to part 15 of the FCC Rules. These limits are designed to provide reasonable protection against harmful interference in a residential installation. This equipment generates uses and can radiate radio frequency energy and, if not installed and used in accordance with the instructions, may cause harmful interference to radio communications. However, there is no guarantee that interference will not occur in a particular installation. If this equipment does cause harmful interference to radio or television reception, which can be determined by turning the equipment off and on, the user is encouraged to try to correct the interference by one or more of the following measures:

- Reorient or relocate the receiving antenna.
- Increase the separation between the equipment and receiver.
- Connect the equipment into an outlet on a circuit different from that to which the receiver is connected.
- Consult the dealer or an experienced radio/TV technician for help.

FCC RF exposure statement:

The equipment complies with FCC radiation exposure limits set forth for an uncontrolled environment. This equipment should be installed and operated with minimum distance between 20cm the radiator your body.