

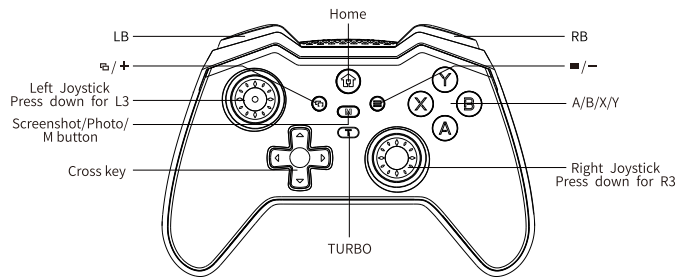
PHILIPS

WIRELESS GAME CONTROLLER

DLK5010

(PC/Switch/IOS/Android)
Manual

Button Icons

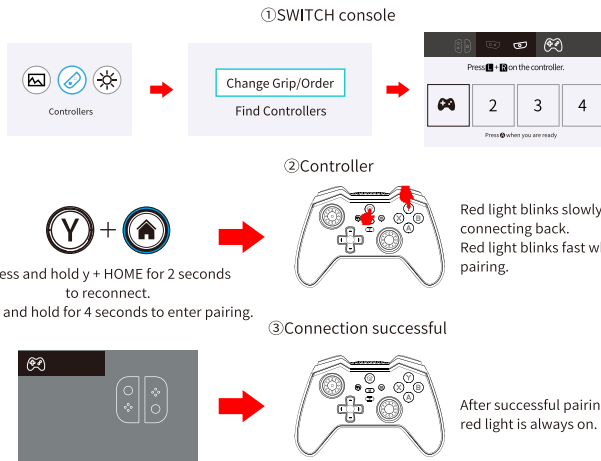


Product Features

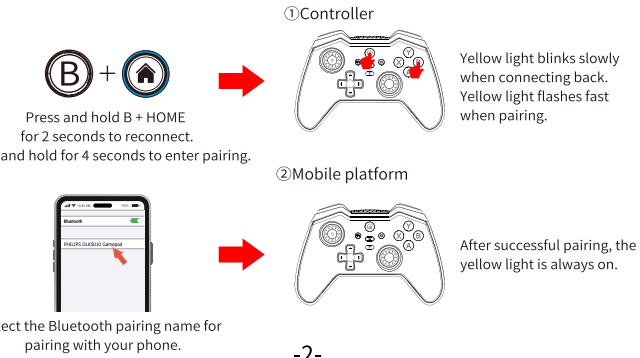
1. According to different platforms, the controller supports wired connection mode, Bluetooth connection mode.
2. The controller Bluetooth support Android system, Windows system, IOS system, SWITCH console.
3. N/A
4. The controller wired support SWITCH, Android, Windows, XINPUT (PC360), DINPUT function, each platform wired automatic recognition.
4. The handle wired to support SWITCH, Android, Windows, XINPUT (PC360), DINPUT

-1-

Connection method with Switch

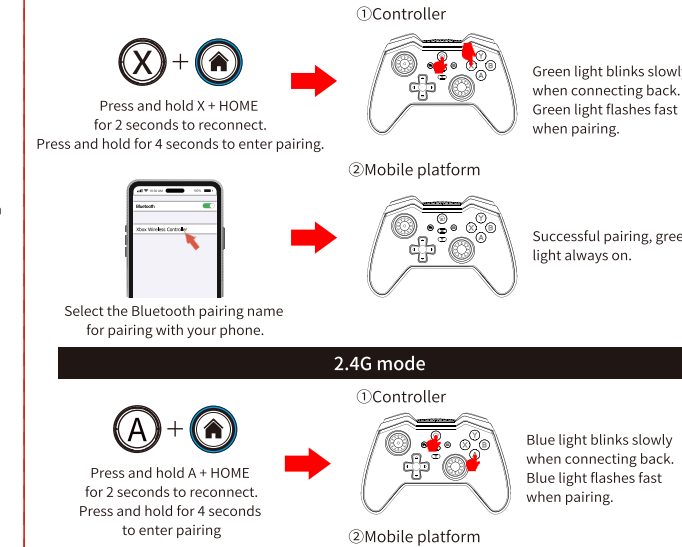


Standard Android mode (D-input mode)



-2-

IOS/Android devices (X-input mode)

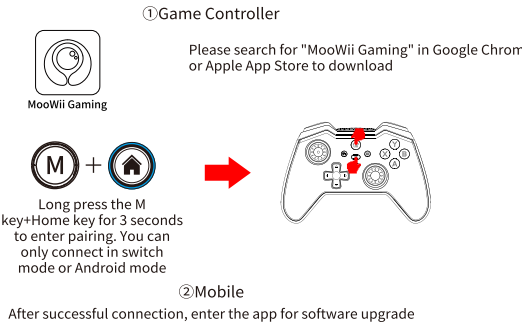


keychain switching function

X+B+HOME long press for 2 seconds to realize A to B, X to Y, key swap function, the controller vibrates for 0.5 seconds after successful setup.

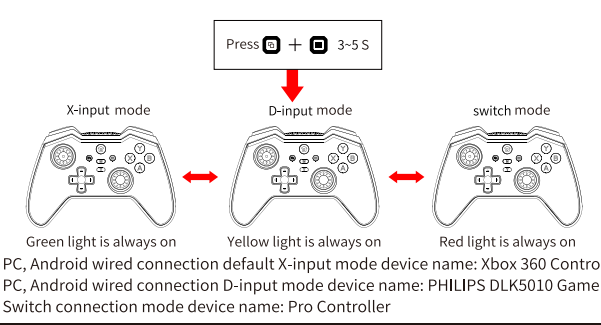
-3-

Software upgrade

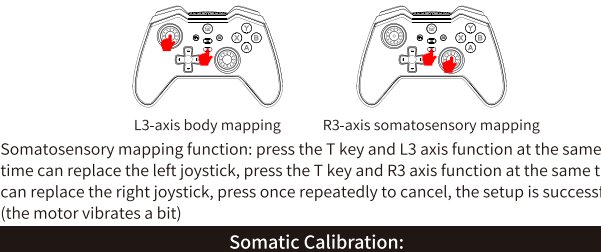


-4-

PC wired connection Xinput mode and Dinput mode switching



body mapping function



Somatic Calibration:

Press the menu key + home button to enter the calibration
Somatosensory calibration: the controller is placed flat on the desktop, press (press once to enter) menu key + home key to enter the calibration The indicator light purple light flashes slowly, after 5 seconds the indicator light flashes 3 times to complete the somatosensory calibration, if you move the controller during the calibration process then it will automatically exit the calibration mode.Repeat the above operation to recalibrate.

-5-

Joystick/Trigger Calibration



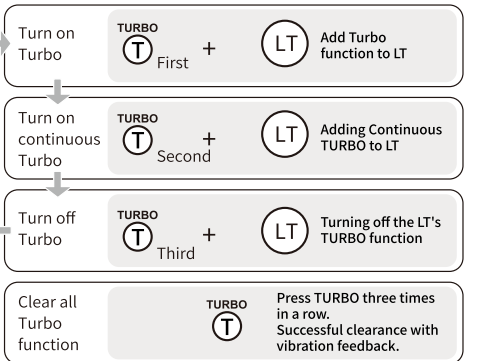
Long press window key + home key for 3 seconds to enter calibration
Joystick calibration: Long press the window key + home key for 3 seconds to enter the calibration indicator white slow flash, joystick full play more than 3 times, the trigger is pressed to the end 3 times, and finally press the window key + home key (press once can), the indicator light fast flash 3 times to complete the calibration controller. Failure to calibrate will directly exit the calibration mode.Repeat the above operation to recalibrate.

Special turbo device

Pressing TURBO multiple times on the same button will produce different effects. (See the figure below for details, denoted by LT)

Direction Button (Up, Down, Left, Right) A/B/X/Y/LT/ LB/ RT / RB/RT

Setting method



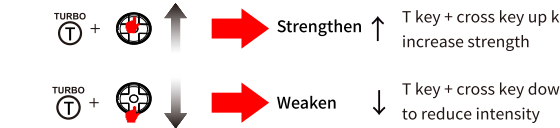
-6-

TURBO Speed Adjustment

Please note that:
This controller has 3 speeds, 5 times/second, 10 times/second, and 20 times/second; Default to 10 times/second; No indicator light is required, but there is vibration feedback.
1. Press T + cross key left to reduce the frequency of turbo.
2. Press T + Crosshair right to increase the turbo frequency.

Motor vibration intensity adjustment (Switch only)

Hold down the T key , and then press the cross key up and down, you can raise / lower the intensity of the controller vibration. Intensity 0, 25%, 50%, 75%, 100% four adjustable. (Adjustment success, the current vibration intensity prompted vibration 0.5 seconds, the controller needs to be adjusted in the connection state, the default intensity is 50%)



Battery status display

When the controller is low on power: 5 blinks per second at 30 second intervals.
When the controller is fully charged: all lights go out when the controller is fully charged.
When the controller is charging: the charging channel light blinks slowly when the controller is turned off, and the charging light is prioritized when charging in the connected state.

Product Specification

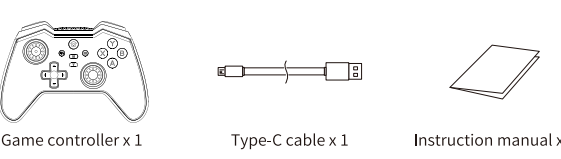
Size: L153*W104*H63mm
Weight: 207g (±5g)
Input specification: DC 5V 500mA
Battery capacity: 600mAh@3.7V
Execution standard: GB

warnings

1. Do not place the controller in direct sunlight.
2. Do not place the controller in water.
3. Do not place heavy objects on the controller.
4. Avoid liquids or small particles
5. do not twist or pull the joystick

-7-

Package content



-8-

FCC Statement

This device complies with part 15 of the FCC Rules. Operation is subject to the following two conditions: (1) This device may not cause harmful interference, and (2) this device must accept any interference received, including interference that may cause undesired operation.

This equipment has been tested and found to comply with the limits for a Class B digital device, pursuant to part 15 of the FCC Rules. These limits are designed to provide reasonable protection against harmful interference in a residential installation. This equipment generates, uses and can radiate radio frequency energy and, if not installed and used in accordance with the instructions, may cause harmful interference to radio communications. However, there is no guarantee that interference will not occur in a particular installation. If this equipment does cause harmful interference to radio or television reception, which can be determined by turning the equipment off and on, the user is encouraged to try to correct the interference by one or more of the following measures:

- Reorient or relocate the receiving antenna.
- Increase the separation between the equipment and receiver.
- Connect the equipment into an outlet on a circuit different from that to which the receiver is connected.
- Consult the dealer or an experienced radio/TV technician for help.

Caution: Any changes or modifications to this device not explicitly approved by manufacturer could void your authority to operate this equipment.

RF Exposure Information

The device has been evaluated to meet general RF exposure requirement. The device can be used in portable exposure condition without restriction.