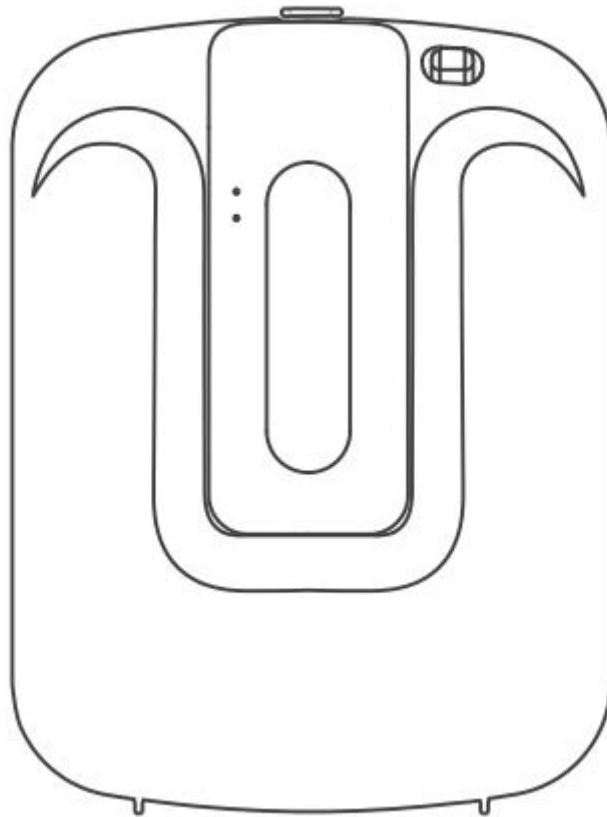


# SMART SCENT DIFFUSER

## USER MANUAL



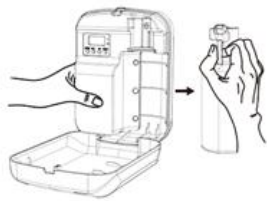
Please read the manual carefully and keep it properly before use



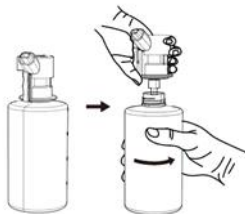
## Installation



- ① Press the top button open the cover.



- ② Pull out the atomizer head and essential oil bottle as a whole.



- ③ Take out the essential oil bottle, refill essential oil and put it back on the atomizer head.



- ④ Put the atomizing head back into the device and close the cover.

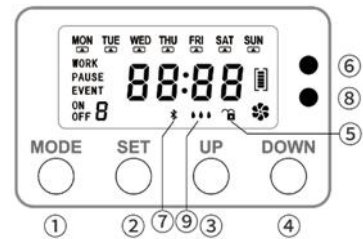
Wall-mounted: First fix the wall-mounted backplane to the wall, and then hang the device on the backplane hole along the screw position.

## ◇ Package Include

Smart scent air machine x1, power adapter x1, HVAC adapter x1, wall Bracket x1, user manual x1

## ◇ Function Buttons

This device with Bluetooth and essential oil level detection function,could set by APP or Buttons



### Button Instruction

No.	Key name	Function	How to use
①	MODE	1.Choose work mode 2.Reset	Adjust different function, including your local current time, 5different groups working periods, Work/Pause interval time, aroma concentra-tion. On the initial page, long press [MODE] for 10 seconds to restore the factory settings.
②	SET	1.Set Program 2.Lock/unlock	Start program Setting by flexible setting including the Time,Date,aroma concentration. Then press [SET] for 5 seconds to lock /unlock the previous setting.
③	UP	1.Add 2.On/off fan	Press it to adjust/increase the function, such as adjust the time, aroma concentration, working days. Press and hold the UP button for 5 seconds to turn the fan on and off
④	DOWN	reduce	Press it to adjust/increase the function, such as adjust the time, aroma concentration, working days.

### Display sign Instruction

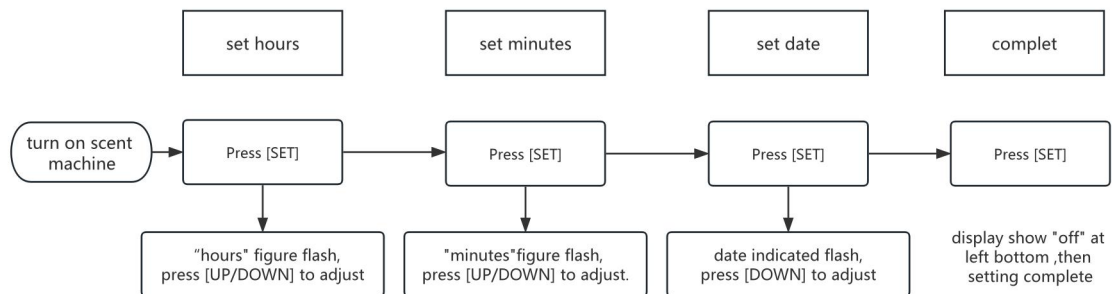
No.	Name	Function
⑤	Lock/unlock	When locked ,the device could not be program set.
⑥	Working/Bluetooth indicator light	When working: Green light flashing. When paused: Green light is on. Bluetooth Connected or set update:Blue light flashing.
⑦	Bluetooth	displayed when connecting to mobile via bluetooth.
⑧	Oil level indicator light	The oil level is high : Green light is on. Oil level is medium:Yellow light is on. Oil level is low: red light is on. The red light flashes, indicating that oil level is insufficient, refill the essential oil in time.
⑨	Oil level sign	The machine was controlled by button in defaults. When connected to Bluetooth, bluetooth control is prioritized

## ◇ Set System time

Please set the system time before you use it. For the default time may not be the time at your time zone.

After power on the machine,then press the set button to set system time,you could follow the Set system time flow chart.

Time	Button	Operate
Hours	Press [SET]	until "hours" figure flash,press [UP/DOWN] to adjust.
Minutes	Press [SET]	until"minutes" figure flash, press [UP/DOWN] to adjust.
Date	Press [SET]	until date indicated flash,press <b>[DOWN]</b> to adjust.
Complete system time set	Press [SET]	until display show off at left bottom ,then setting complete.



Set system time flow chart

## ◇ Set the working mode by APP

Please search "Scent Tech" in play store to install this APP, Or scan this code to download this APP.

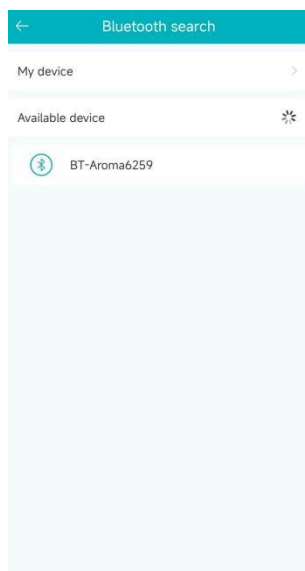
The machine can be set up to 5 modes, it can be set different working days, working times according to different requests and suit for different places.



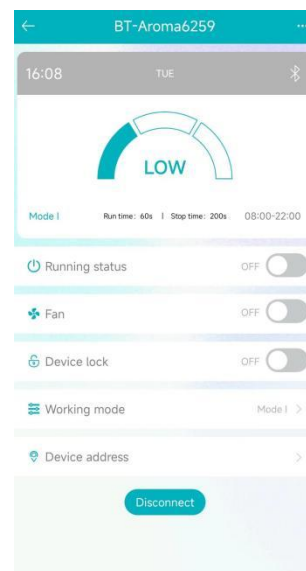
**Step1** On APP home page click “bluetooth”to add the device, do not click “WIFI” or “4G”.This machine is a bluetooth device. Bluetooth connection does not need register account.



**Step2** add smart scent air machine.



**Step3** click “working mode” to set time

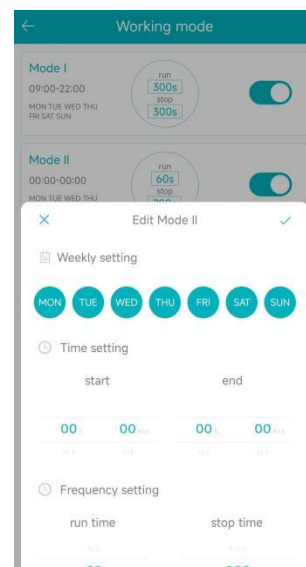


- Essential oil level
- Current working mode
- Turn on/off machine
- Turn on/off fan
- Lock/unlock working mode
- Set working mode

**Step4** into working mode



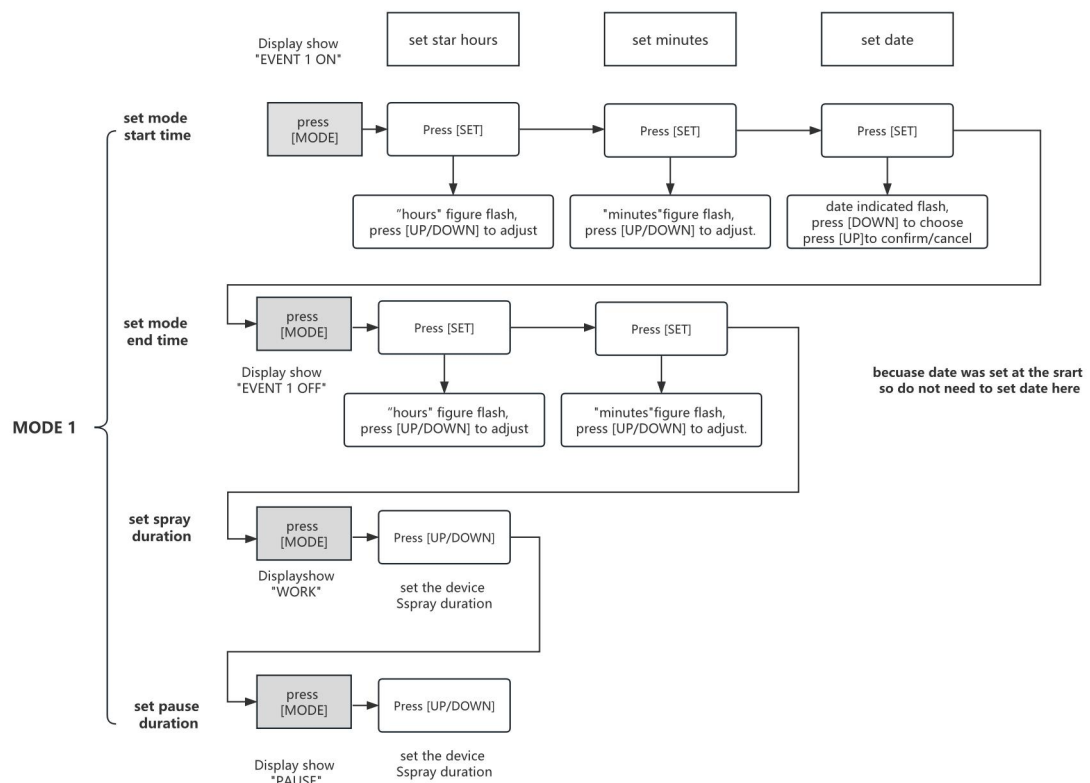
**Step5** set your preferred work mode



## ◇ Set the working mode by button

This device could set working mode by button, could set up to 5 modes. you could set it follow the work mode flow chart .

Set mode	Set mode start time	Press the [MODE] button firstly, LCD display shows "EVENT 1 ON", press [SET] button and [UP/DOWN] button. Select settings mode starting hours, minute and date.  Note: 1. when set day, press [Down] button to move, press [UP] button to select or cancel the day. 2. symbol "▲" will show or disappear under the days on top of display, that mean select or cancel.
	Set mode end time	Press the [MODE] button secondly, LCD display shows "EVENT 1 OFF", Press [SET] button. Select settings mode end hours, minutes.
	Set spray duration	Press the [MODE] button thirdly, LCD display shows "WORK", press [UP/DOWN] button to set the spray duration between 5~300 seconds
	Set pause duration	Press the [MODE] button thirdly, LCD display shows "PAUSE", press [UP/DOWN] button to set the pause duration between 20~300 seconds



### MODE 2

When complete mode 1, continue press [MODE], start to set mode 2. you could set up to 5 mode

Set work mode flow chart

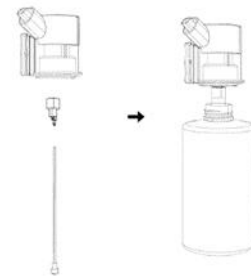
## After setting, you can set next mode as needed, or you can continue to press [MODE] to return to the LCD home page if you don't need.

## ◇ Product details

- Size: 212×158×75mm/ 8.3x6.2x2.95 inch
- Voltage: DC 12V
- Power: 8W
- Weight: 0.8kg/1.76 lb
- Capacity: 400ml/13.5 fl.oz
- Coverage: 1000-2500 sq.ft

## ◇ Replace the atomization core

The atomization head include: atomization core,oil tank,oil pipette and filter.Take off the oil tank, pull out the pipette, remove the atomization core,then insert the new core into the main body of the atomization head, and align the oil pipette with the small hole in the atomization core and press tighten it .



## ◇ Equipment maintenance

If the equipment is not used for a long time, please refill the oil tank with 95% industrial alcohol to clean the nozzle and other parts inside the machine. **Tip: Maintain the equipment with 95% industrial alcohol at least every 1-2 months.**

Specific operation: add 95% alcohol into the empty bottle, turn on the equipment and run for 10-15 minutes, then turn off the machine and pour the alcohol, then install the tank to machine.

## ◇ Warranty

- 1.The Warranty is suitable for new machine but not resell or second hand products.
2. Warranty is offered for all qualified machines. During warranty,we will offer repair services and the free parts but without essential oil.
- 3.The warranty card & purchase Invoice are needed if after-sell service required. Please contact with us within warranty when have any problems.
- 4.The following is not for free warranty service:
  - ①Damage & problems caused by Accidents & Fire.
  - ②Not use properly and wrong operation.
  - ③If repaired by not professional person and make some parts damaged.
  - ④Damaged during transportation.

- ⑤Without our warranty card.
  - ⑥Without proper cleaning for a long time
  - ⑦The machine work time out.
  - ⑧Machines & Parts not from us.
  - ⑨Machines not gotten from official channels.
  - ⑩Send the machines back without permit from manufacturer.
- 

## ◇ Notice

- 1.Please carefully read the Instruction before installation, and keep the User manual to check if need at anytime
- 2.Please make sure the machine upright ,no leaking and no down; or may damage the device and parts
- 3.Please do not use the broken power wire and make sure the power supply is suitable for the machine, or may cause fire .
- 4.Please do not open the machine by yourself, If problems, please contact us promptly !

## Frequently Questions and Answers

1. After turn on, there is no diffuser?
  - 1).This scent machine is different from the traditional diffuser which runs all the time. It will work for several seconds, then pause, and work again.
  - 2). Check the Power.
  - 3). Replace the oil with rubbing alcohol and run it through for 10-15 minutes.
2. Could this machine connect with Wifi ?

It could not use Wifi. This is a bluetooth connection machine ,it only could connect to mobile phone via bluetooth.
3. Did the App need register to use?

No,Click"bluetooth" to connect device do not need registration,
4. The motor is working but there is no scent?

First, you need to check whether the essential oil tank is tightened. If there is air leakage, the fragrance will not be sprayed. If there is no problem with the installation,please reset the machine and then it will work again.
5. After setting the working mode through the app, the indicator light is on, but the screen does not change and the machine does not work?

Take off the power cable for 10 minutes, then power on again and restart the machine.



**FCC Warning:**

This equipment has been tested and found to comply with the limits for a Class B digital device, pursuant to part 15 of the FCC Rules. These limits are designed to provide reasonable protection against harmful interference in a residential installation. This equipment generates, uses and can radiate radio frequency energy and, if not installed and used in accordance with the instructions, may cause harmful interference to radio communications. However, there is no guarantee that interference will not occur in a particular installation. If this equipment does cause harmful interference to radio or television reception, which can be determined by turning the equipment off and on, the user is encouraged to try to correct the interference by one or more of the following measures:

- Reorient or relocate the receiving antenna.
- Increase the separation between the equipment and receiver.
- Connect the equipment into an outlet on a circuit different from that to which the receiver is connected.
- Consult the dealer or an experienced radio/TV technician for help.

**Caution:** Any changes or modifications to this device not explicitly approved by manufacturer could void your authority to operate this equipment.

This device complies with part 15 of the FCC Rules. Operation is subject to the following two conditions:

(1) This device may not cause harmful interference, and (2) this device must accept any interference received, including interference that may cause undesired operation.

This equipment complies with FCC radiation exposure limits set forth for an uncontrolled environment. This equipment should be installed and operated with minimum distance 0cm between the radiator and your body.