

80MM Thermal Receipt Printer Manual

Please click the below link to download printer drivers and tool and
others information about the printer.

<http://www.zhsanyo.com/>

1. Instructions for Safe Use

Before using the printer, please read the following contents carefully and strictly obey.

! Warnings

- (1). The print head is a hot part, do not touch the print head and its surrounding parts while printing or just after printing to avoid burns.
- (2). Do not touch the print head and connecting parts at will during use to avoid damage to the print head due to static electricity.
- (3). Do not touch the printer's paper cutter or tearing knife to avoid cuts.
- (4). This product is A class A product, in the living environment, this product may cause radio interference. In this case, it may be necessary for the user to take practical measures against interference.

*** Be Aware**

- (1). The printer should be mounted in a stable place and avoid placing the printer where there is vibration or tilting.
- (2). Do not use and store the printer in a place with high heat, high humidity, and heavy pollution.
- (3). Connect the printer's power adapter to a reliable grounding outlet and avoid using the same outlet as a high-power device that can cause voltage fluctuations.
- (4). Avoid liquid or conductive substances such as water and gasoline entering the printer. Once this occurs, turn off the power immediately and clean up before continuing to use.
- (5). If you do not use the printer for a long time, shut it down and disconnect the power supply.
- (6). The user shall not disassemble the printer for maintenance or modification without authorization.
- (7). The use of non-original power adapter may lead to abnormal work.
- (8). In order to ensure print quality and product life, it is recommended to use high quality printing paper.
- (9). Make sure that the power supply of the printer is turned off during routine maintenance of the printer or when inserting and removing the cable.
- (10). When inserting and unplugging the printer cable, please hold the plug of the cable with your hand for insertion and unplugging, do not hold the soft wire for insertion and unplugging, so as to avoid breaking.

2. Guarantee Terms of service

- (1). Meet the requirements of the three guarantees service period;
- (2). The customer must provide a valid purchase voucher (official invoice or stamped receipt) or a clearly identifiable body label;
- (3) Damage caused by flood, fire, earthquake, lightning strike, typhoon and other irresistible natural disasters, or

in the case of animals, pets,

Damage caused by cockroaches, corrosive substances, etc., or damage caused by abnormal use such as foreign body entry, liquid entry, scratching, burning, falling, self-disassembly, self-repair, etc., is not within the scope of the three Guarantees of service;

(4). In the process of use, the appearance of the product changes, such as rust, color change, texture change, natural wear, etc., but it has no impact on the function and performance of the product, and is not within the scope of the three Guarantees service;

(5). Failure or damage caused by not using the original accessories is not within the scope of three guarantees service;

(6). There is a lack of materials, not within the scope of three guarantees of service;

(7). Products not within the scope of three guarantees of service, maintenance needs to be charged;

(8). Three guarantees service period from the date of customer purchase calculation (based on the certificate of purchase), no certificate is calculated by the date of product delivery.

3. Application Area

Supermarket, takeout, catering (front desk and back kitchen)and other industry inquiry, transaction and other independent service industry, sports, postal, aviation and other industries scientific research, medical, environmental protection and other lines Accessor.

4.Unpack and inspect accessories

Accessory Name	number	Accessory Name	number
Burning discs	Optional	Data cable	Optional
AC power cord	Optional	Thermal paper	Optional
Electric adapter	1pcs	Instruction book	1pcs

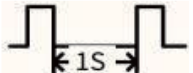
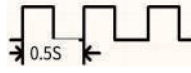
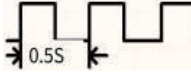
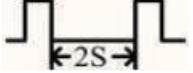
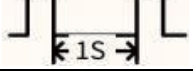
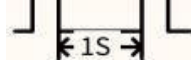
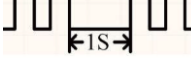

5. Technical Specification Definition

Printing mode	Line type direct heat sensitive
Print width	80mm (paper width 80.0±0.5mm)
Print speed	70-90mm/s(actual speed depends on the model purchased)
Print density	384 points/line (203 DPI)
Print life	Mechanical wear 50km, printing head 100 million pulses
Extension Character Sheet	PC437 (Standard Europe)、Katakana、PC850 (Multilingual)、PC860 (Portuguese)、PC863 (Canadian)、PC865 (Nordic)、West Europe、Greek、Hebrew、East Europe、Iran、WPC1252、PC866 (Cyrillic#2)、PC852 (Latin2)、PC858、IranII、Latvian、Arabic、Thai、PT151 (1251)
Print command	ESC/POS command (see programming manual for details)
Bar code system	1D: UPC-A / UPC-E / JAN13 (EAN13) / JAN8 (EAN8) / CODE39 / ITF / CODABAR /

	CODE93 / CODE128 2D: QR CODE,PDF417
Character Size	ANK, Font A-42 or 48 arrange/Font 8-56 or 64 arrange/Simplified/Traditional Chinese-21 or 24 arrange
Print bitmap	Bitmap printing and NV Logo bitmap storage printing (storage space 60KBytes)
Print interface	Network port/Parallel port/Serial port /USB/ Bluetooth /WiFi (the actual interface is subject to the purchased model)
Cash box interface	Rj-45, 24V-1A
Receive cache	≥4K Bytes
Paper requirements	Thickness: 0.06-0.08mm, width: 80.0±0.5mm, diameter: 80mm
Overall dimensions	The actual size is subject to the model purchased
Body weight	The actual weight is subject to the model purchased
Environmental Requirements	Working environment: Temperature 0 ~ 50 , humidity 20%RH ~ 85%RH (no condensation) Storage environment: Temperature -20 ~ 60 , humidity 5%RH ~ 95%RH (no condensation)
Power supply Specifications	Input: AC100~240V, frequency: 50~60H, output: DC24V/1.5A

6. Status indication Definition

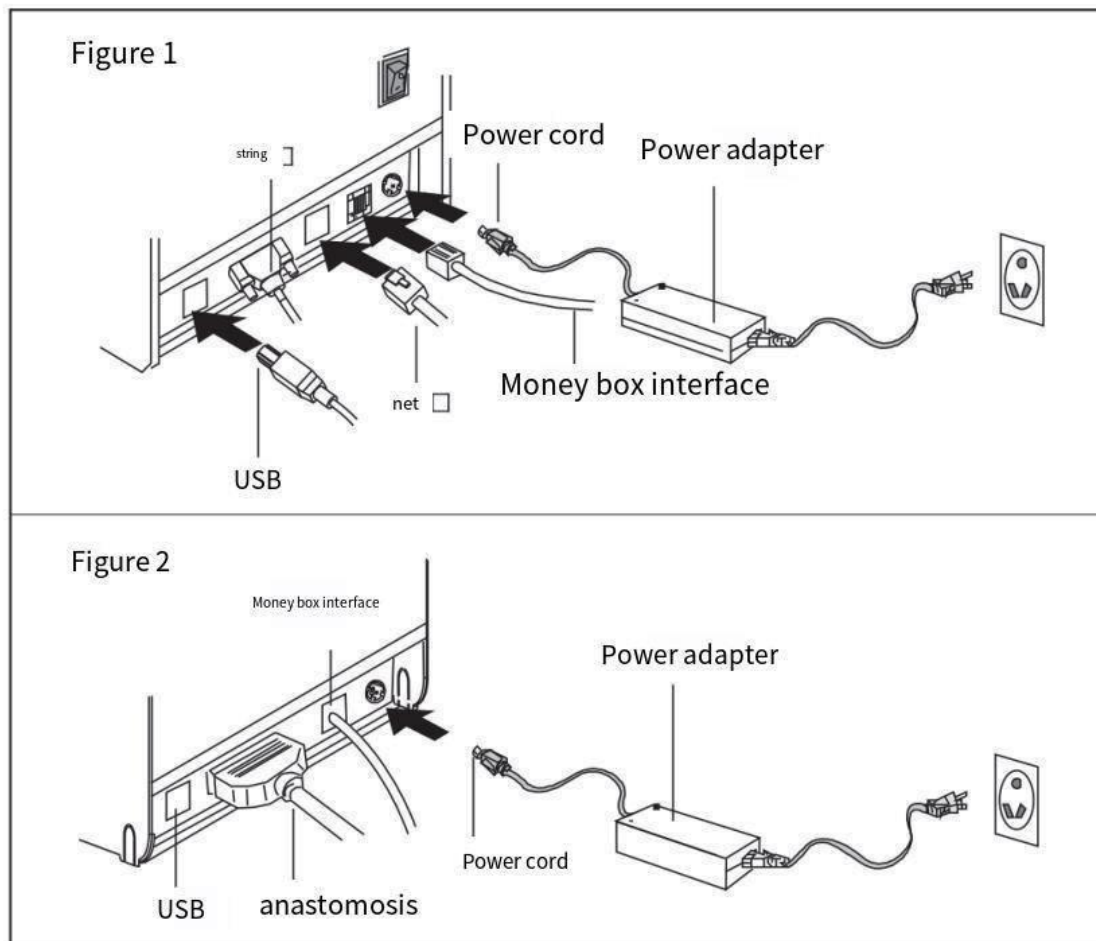
The light flashes once for 1/4 second and the buzzer sounds for 1/4 second.

An anomaly occurs	Blue light	Red light	PAPER lights	ERROR light	Buzzer
Lack of paper	bright	bright	bright	bright	
Overheat	bright		destroy		
Remove the lid	bright	bright	bright	bright	
Cutter stuck	bright		destroy		

7. Connect the printer

Figure 1, Figure 2 shows the interface diagram of the two models, the **actual interface diagram is subject to the purchased model**.

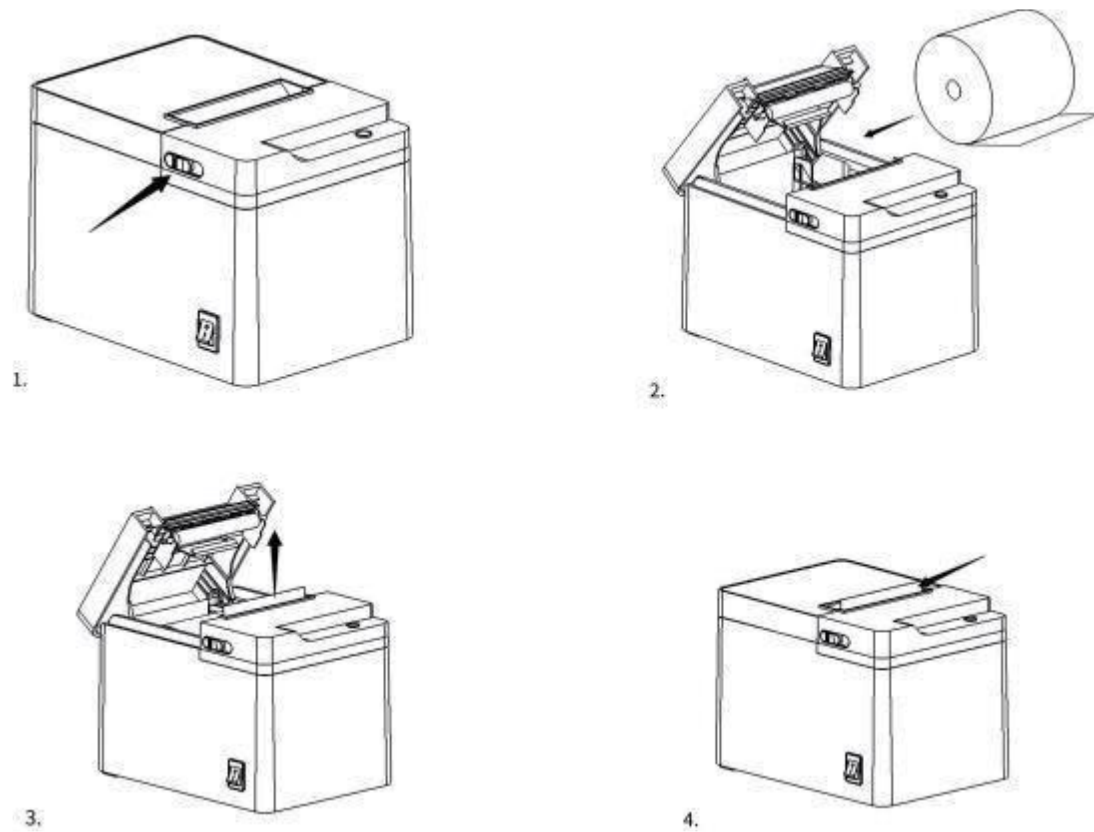
- 1). Connect the original power adapter to the printer in the following order:
- 2). Connect the data cable to the printer.
- 3). Connect the money box cable to the printer.
- 4). Connect the AC power cord, do so safely to avoid electric shock.



8. Install thermal paper rolls

The following figure shows the paper loading diagram of a model, the **actual appearance is subject to the model purchased**.

- (1). Press or snap the cover opening mechanism on the left side to open the paper bin cover.
- (2). Put the thermal paper roll in the direction shown. If you put it in the opposite direction, the print will be blank.
- (3). Pull out a small section of the printer paper to the outside of the bin, taking care that the paper should be centered to avoid paper deviation or jamming.
- (4). Close the paper bin cover and press tightly, so that the rubber roller stuck in place, to avoid the cutter stuck.



9. Print the self-test information

Hold down the FEED button, open the printer, wait for the prompt of "SELF-TEST INFORMATION", release the button, and the printer will automatically print the self test information, so that you can check the Settings of the printer, and check whether the printing effect is properly connected to the communication interface.

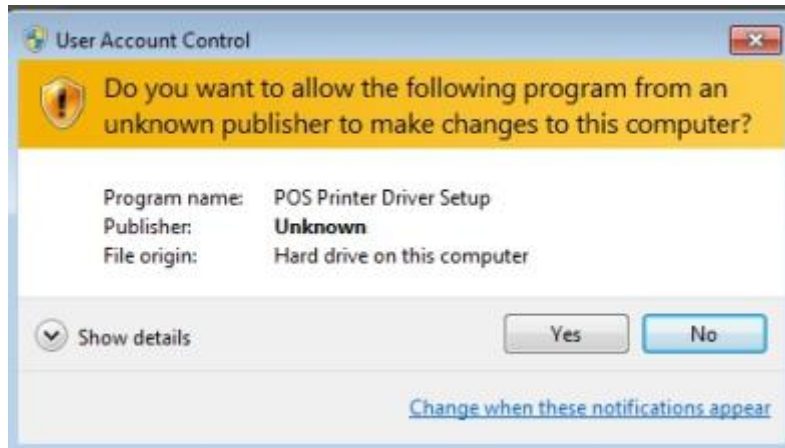
Note: For more setup instructions, check the machine's sublabel to download the electronic user manual, or open the included CD, or contact the supplier.

10. Install Windows drivers

If you need to print with Windows drivers, look at the machine TAB for a channel to download drivers, or turn on Random Light Disk, or contact the vendor.

(1). Connect the USB cable to the printer, or use an Ethernet cable to connect to the printer, and turn on the printer power.

(2). Find the file containing the name "POS Printer Driver", double-click the file with the suffix ".exe", click "Yes".

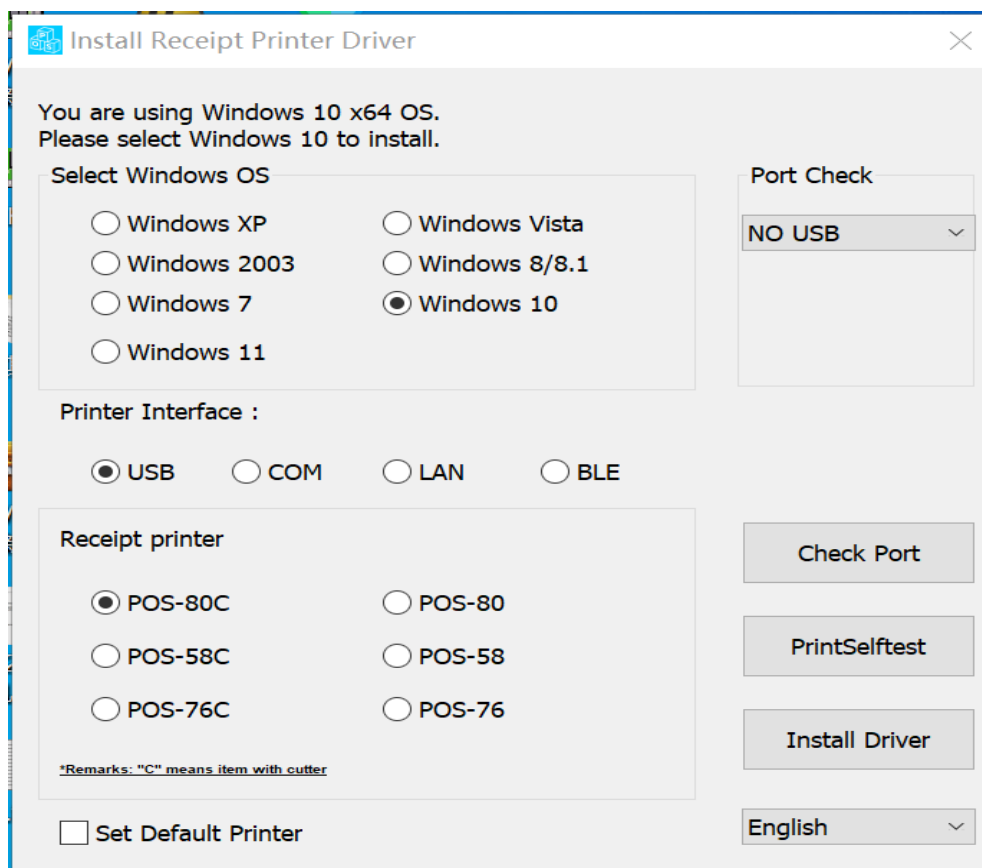


(3). Then click "Install Driver" after finish steps below a and b.

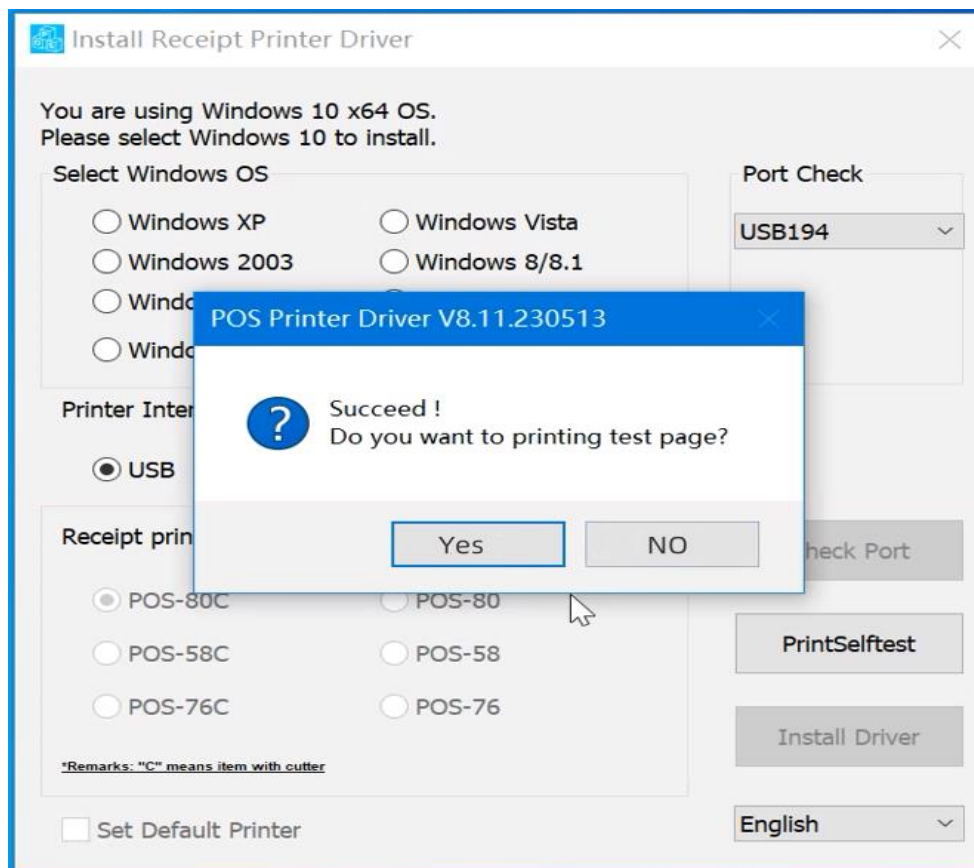
a. Choose the WINDOW system. If the automatically matched selection is different from the actual one, you can manually select it.

b. Select printer interface USB, COM (serial port), LAN (network), BLE (Bluetooth)

Select USB: The Port Check will automatically select the USB port, and the Check Port button can check if the connection is successful.

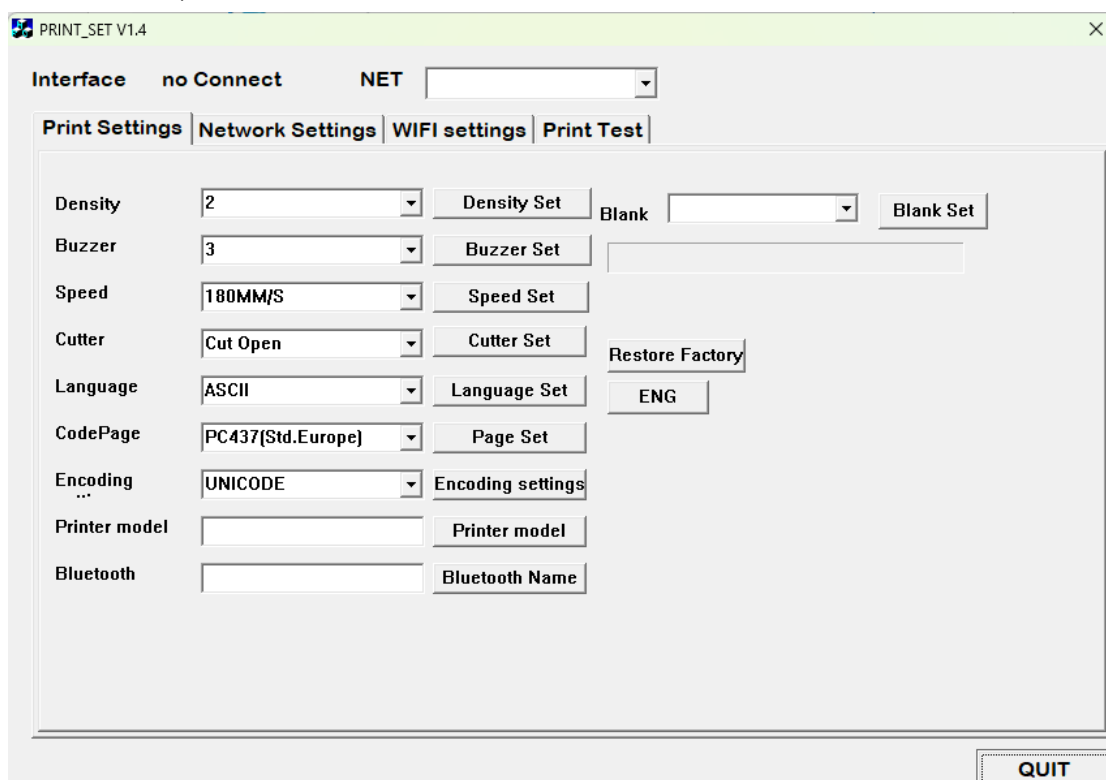


(4). The following dialog box shows that the installation is finished. You can print a self-test page as needed.



11. Print Set Tool

Please double click this file "PRINT SET TOOL" directly to set If you need to set the printer's functions and parameters.



FCC Statement

This device complies with part 15 of the FCC Rules. Operation is subject to the following two conditions: (1) This device may not cause harmful interference, and (2) this device must accept any interference received, including interference that may cause undesired operation.

This equipment has been tested and found to comply with the limits for a Class B digital device, pursuant to part 15 of the FCC Rules. These limits are designed to provide reasonable protection against harmful interference in a residential installation. This equipment generates, uses and can radiate radio frequency energy and, if not installed and used in accordance with the instructions, may cause harmful interference to radio communications. However, there is no guarantee that interference will not occur in a particular installation. If this equipment does cause harmful interference to radio or television reception, which can be determined by turning the equipment off and on, the user is encouraged to try to correct the interference by one or more of the following measures:

- Reorient or relocate the receiving antenna.
- Increase the separation between the equipment and receiver.
- Connect the equipment into an outlet on a circuit different from that to which the receiver is connected.
- Consult the dealer or an experienced radio/TV technician for help.

Caution: Any changes or modifications to this device not explicitly approved by manufacturer could void your authority to operate this equipment.

RF Exposure Information

The device has been evaluated to meet general RF exposure requirement. The device can be used in portable exposure condition without restriction.