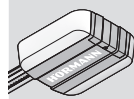


EN

Operating instructions

Hand transmitter HSE 4-315

Operation with the garage door operator SilentDrive 7560 / 8560 series



These instructions contain important information on the product, and especially safety instructions and warnings.

- Read through the instructions carefully.
- Keep these instructions in a safe place.

1 Safety instructions

1.1 Intended use

The hand transmitter HSE 4-315 is a unidirectional transmitter for operators. It can be operated via the multicode and the fixed code 315 MHz.

Other types of application are prohibited. The manufacturer is not liable for damage caused by improper use or incorrect operation.

1.2 Safety instructions for teach-in and operation

WARNING

Risk of injury during intended or unintended door travel

- Make sure that hand transmitters are kept away from children and can only be used by people who have been instructed on how the remote-controlled door system functions!
- If the door has only one safety device, only operate the hand transmitter if you are within sight of the door!
- Drive or walk through the door openings only when the door is in the OPEN end-of-travel position!
- Never stand in the door's area of travel.
- Note that accidentally pressing a button on the hand transmitter can result in a door run.
- Make sure that no persons or objects are in the door's area of travel when teaching in the radio system.

Operation is subject to the following two conditions:

1. this device may not cause harmful interference, and
2. this device must accept any interference received, including interference that may cause undesired operation.

CAUTION!

Changes or modifications made to this equipment not expressly approved by Hörmann could void the FCC authorization required to operate this equipment.

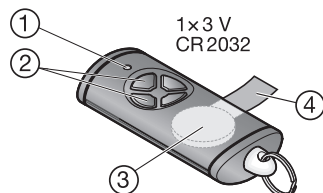
The radiated power of the hand transmitter HSE 4-315 with an operating frequency of 315 MHz is well below the FCC radio frequency exposure limit. Nevertheless, the hand transmitter HSE 4-315 with an operating frequency of 315 MHz shall be used in such a manner that the potential for human contact during normal operation is minimized.

IC: before the equipment certification number indicates that the Industry Canada technical specifications have been met. It does not guarantee that the certified product will operate to the user's satisfaction.

NOTICE

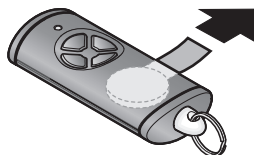
- If there is no separate entrance, perform changes and extensions of radio systems while standing in the facility.
- After programming or extending the radio system, you have to perform a function check.
- Local conditions may affect the range of the radio system.

2 Product description



- ① LED, bi-color
- ② Hand transmitter buttons
- ③ Battery
- ④ Battery insulation foil

3 Initial start-up



After removing the battery insulation foil, the hand transmitter is ready for operation.

4 Operation

Each hand transmitter button is assigned a radio code.

- Press the button of the hand transmitter whose radio code you want to transmit.
 - The LED is illuminated blue for 2 seconds.
 - The radio code is transmitted.

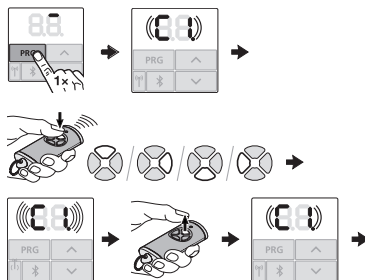
5 Radio codes

5.1 Teaching in hand transmitter via the multicode on the operator (impulse)

WARNING

Risk of injury during intended or unintended door travel!

► See warning in section 1.2



1. Press the **PRG** button 1 x. **C1** flashes.
2. Press and hold the hand transmitter button from which you want to transmit the radio code.

Hand transmitter:

- The LED is illuminated blue for 2 seconds and then goes out.
- After 5 seconds, the LED alternates flashing in red and blue. The radio code is transmitted.

Operator:

If the receiver detects a valid radio code, **C1** flashes rapidly.

3. Release the hand transmitter button. **The hand transmitter has been taught in and is ready for operation.** **C1** flashes.

Further hand transmitters can be taught in within 25 seconds (timeout).

Teaching in further radio codes (impulse)

► Repeat steps 2 + 3.

If the same radio code is taught in on 2 different channels, it will be deleted on the channel that was taught in first.

Canceling radio code teach-in

► Press the **PRG** button 6 x.

Timeout

If the timeout (25 seconds) is exceeded while teaching in the radio code, the operator automatically switches to operation mode.

5.2 Teaching in a hand transmitter on a HomeLink® receiver

A hand transmitter button is taught in on a HomeLink® receiver by following the steps below.

NOTICE

- Select a free hand transmitter button, i.e. a button whose radio code is not in use anywhere else, for teaching in on the HomeLink® receiver.
- Observe the relevant instructions for operating the receiver.

1. Press and hold down the hand transmitter button that you want to teach in on the HomeLink® receiver.
 - The LED is illuminated blue for 2 seconds and then goes out.
 - After 5 seconds, the LED alternates flashing in red and blue.
2. Release the hand transmitter button. **The hand transmitter button has been taught in on the HomeLink® receiver.**

5.3 Mixed operation / multicode and fixed code 315 MHz

If the multicode is configured, mixed operation (multicode 315 / 426 / 469 MHz and fixed code 315 MHz) is possible. The hand transmitter can learn radio codes from older hand transmitters (grey hand transmitter with mint green buttons) with fixed code 315 MHz.

5.4 Setting the fixed code 315 MHz

The radio code of a hand transmitter is changed from multicode to fixed code by following the steps below.

NOTICE

To change to the fixed code, select a free hand transmitter button, i.e. a button whose radio code is not in use anywhere else.

1. Open the hand transmitter housing.
2. Remove the battery for 10 seconds.
3. Press and hold down the hand transmitter button for which you want to set the fixed code 315 MHz.
4. Insert the battery.
 - The LED flashes slowly in blue for 4 seconds.
 - The LED flashes rapidly in blue for 2 seconds.
 - The LED is illuminated blue for a prolonged period of time.
 - The LED slowly flashes in red for 4 seconds.
 - The LED flashes rapidly in red for 2 seconds.
 - The LED is illuminated red for a prolonged period of time.
5. Release the hand transmitter button. **The fixed code 315 MHz has been set.**
6. Close the housing.

NOTICE

- If the hand transmitter button is released prematurely, the multicode radio will remain active.
- If the radio code of a hand transmitter button is changed to the fixed code, the hand transmitter can only be changed back to the multicode by means of a device reset.

6 Device reset

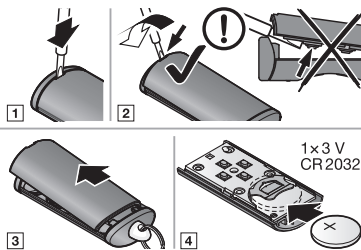
All radio codes assigned to the hand transmitter buttons are returned to the factory setting (multicode) by following the steps below.

1. Open the hand transmitter housing.
2. Remove the battery for 10 seconds.
3. Press and hold a hand transmitter button.
4. Insert the battery.
 - The LED flashes slowly in blue for 4 seconds.
 - The LED flashes rapidly in blue for 2 seconds.
 - The LED is illuminated blue for a prolonged period of time.
5. Release the hand transmitter button. **All radio codes are returned to the factory setting.**
6. Close the hand transmitter housing.

NOTICE

If the hand transmitter button is released prematurely, the radio codes will not be returned to the factory setting.

7 Changing the battery



WARNING



INGESTION HAZARD!

This product contains a button cell or coin battery. **DEATH** or serious injury can occur if ingested.

A swallowed button cell or coin battery can cause **Internal Chemical Burns** in as little as **2 hours**.

- **KEEP** new and used batteries **OUT OF REACH OF CHILDREN**.
- **Seek immediate medical attention** if a battery is suspected to be swallowed or inserted inside any part of the body.

7.1 Safe use of the battery

- Remove and immediately recycle or dispose of used batteries according to local regulations and keep away from children. Do NOT dispose of batteries in household trash or incinerate.
- Even used batteries may cause severe injury or death.
- Call a local poison control center for treatment information.
- Non-rechargeable batteries are not to be recharged.
- Do not force discharge, recharge, disassemble, heat above +60 °C or incinerate. Doing so may result in injury due to venting, leakage or explosion resulting in chemical burns.
- Ensure the batteries are installed correctly according to polarity (+ and -).
- Remove and immediately recycle or dispose of batteries from equipment not used for an extended period of time according to local regulations.
- Always completely secure the battery compartment. If the battery compartment does not close securely, stop using the product, remove the battery, and keep them away from children.

8 LED display

Red (RD)

Status	Function
Illuminated for 2 seconds	A radio code (fixed code) is being transmitted
Flashes twice; following this, the radio code continues to be transmitted	The battery should be replaced soon
Flashes twice; following this, the radio code is no longer transmitted	The battery must be replaced immediately
Flashes slowly	The hand transmitter is in teach-in mode (fixed code)
Flashes rapidly	The hand transmitter has learned the radio code (fixed code)

Blue (BU)

Status	Function
Illuminated for 2 seconds	A radio code (multicode) is being transmitted
Flashes slowly	Hand transmitter is in teach-in mode (multicode)
Flashes rapidly after slow flashing	A valid radio code (multicode) was detected during the teach-in procedure
Flashes slowly for 4 seconds, Flashes rapidly for 2 seconds, Illuminated for a prolonged period	Device reset is being performed and completed (multicode)

Blue (BU) and Red (RD)

Status	Function
Flashing alternately	Hand transmitter is in Homelink mode

9 Cleaning

ATTENTION

Damaging the hand transmitter by faulty cleaning!

- Only clean the hand transmitter with a clean, soft cloth.

NOTICE

Regular use of disinfectants can cause damage to the hand transmitter.

10 Scope of delivery

- Hand transmitter HSE 4-315
- 1 x 3 V battery, type: CR2032, lithium
- Hand transmitter holder
- Visor clip
- Operating instructions

11 Technical data

Hand transmitter HSE 4-315

Model	HSE4-315-MC
Frequency	315 / 426 / 469 MHz
Transmitting power	max. 10 mW (EIRP)
Power supply	1 x 3 V battery, type: CR2032, lithium
Perm. ambient temperature	0 °C to +60 °C
Max. humidity	93%, non-condensing
Protection category	IP 20
Dimensions (W x H x D)	28 x 70 x 14 mm

12 Declaration of Conformity

USA FCC ID: 2BML5HSE4-315
Canada IC: 4205A-HSE4315

This device complies with Part 15 of the FCC Rules and contains license-exempt transmitter(s)/receiver(s) that comply with Innovation, Science and Economic Development Canada's license-exempt RSS Standard(s).

Operation is subject to the following two conditions:

1. this device may not cause harmful interference, and
2. this device must accept any interference received, including interference that may cause undesired operation.



4556335 B0

Dissemination as well as duplication of this document and the use and communication of its content are prohibited unless explicitly permitted. Noncompliance will result in damage compensation obligations. All rights reserved in the event of patent, utility model or design model registration. Subject to changes.