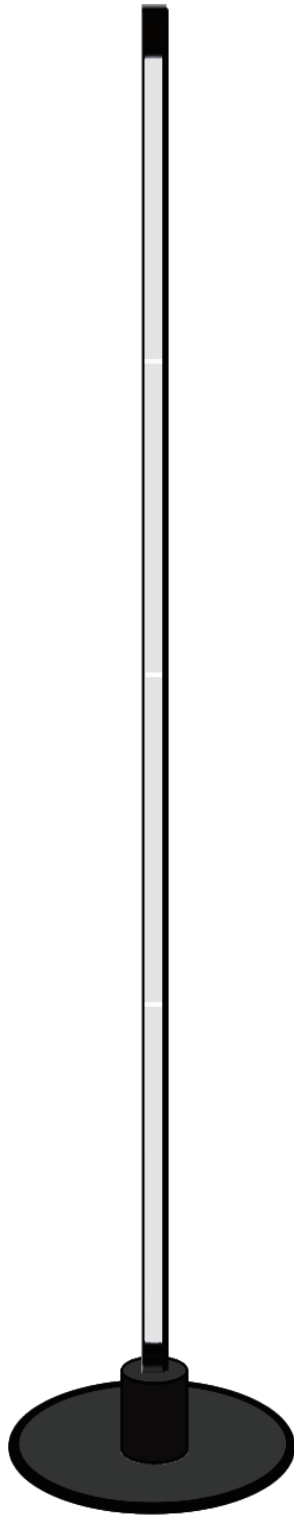


# LED FLOOR LAMP



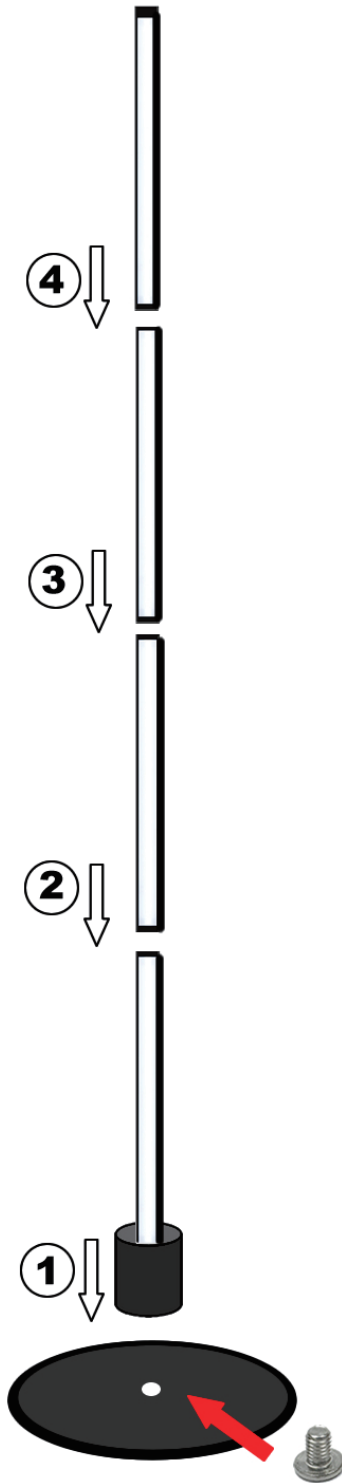
USER MANUAL

## I : Installation Step



Scan the QR Code

H:160cm /63inch



Step 1 : Attach the first lamp segment to the base with screws and tighten it with a screwdriver

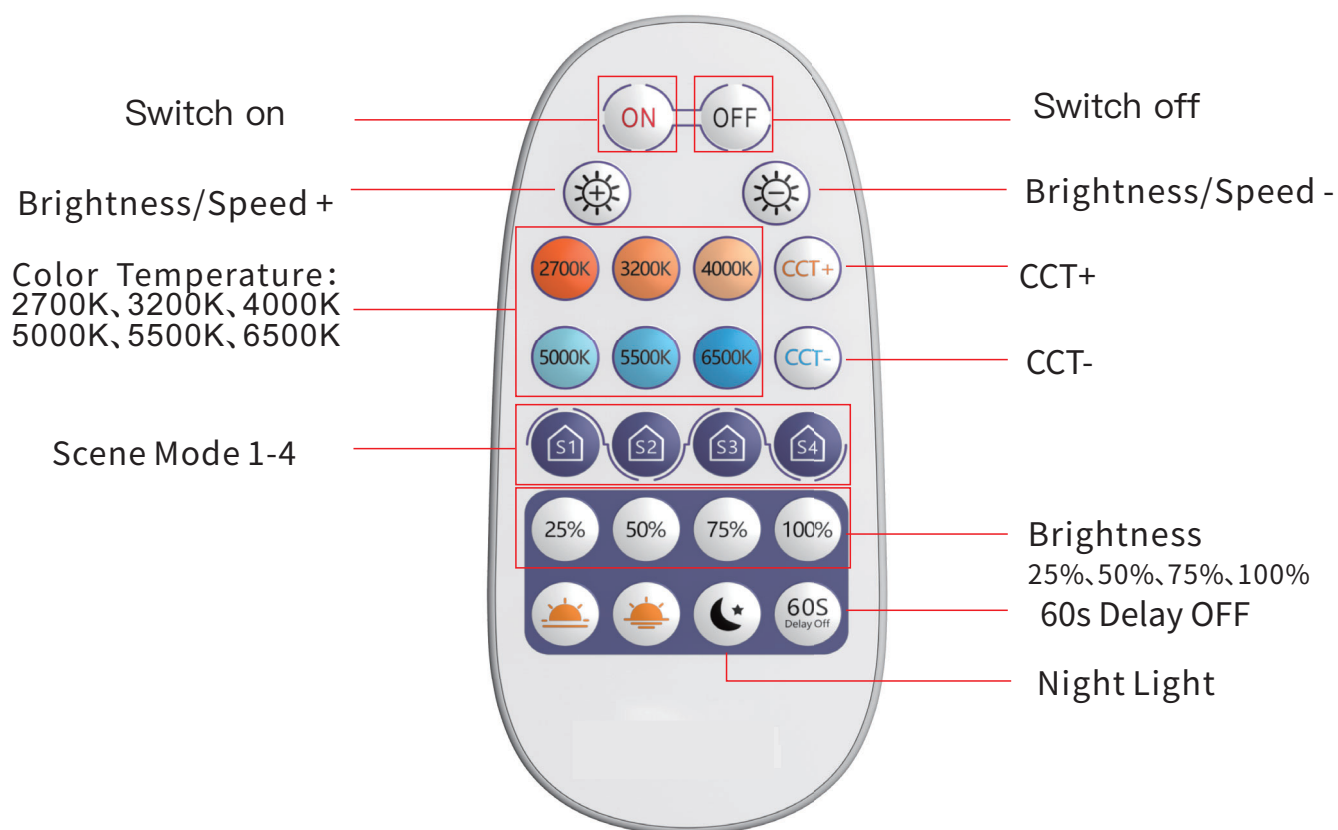
Step 2 : Insert the 2. 3. 4 segment

Step 3 : Check if they are plugged in fully

Step 4 : Connect the lamp to the power supply

Step 5 : Turn ON the lamp by the control box on the power cable; Scanning the QR Code to set up APP or Using the remote to control the lamp

## II:Key Functions



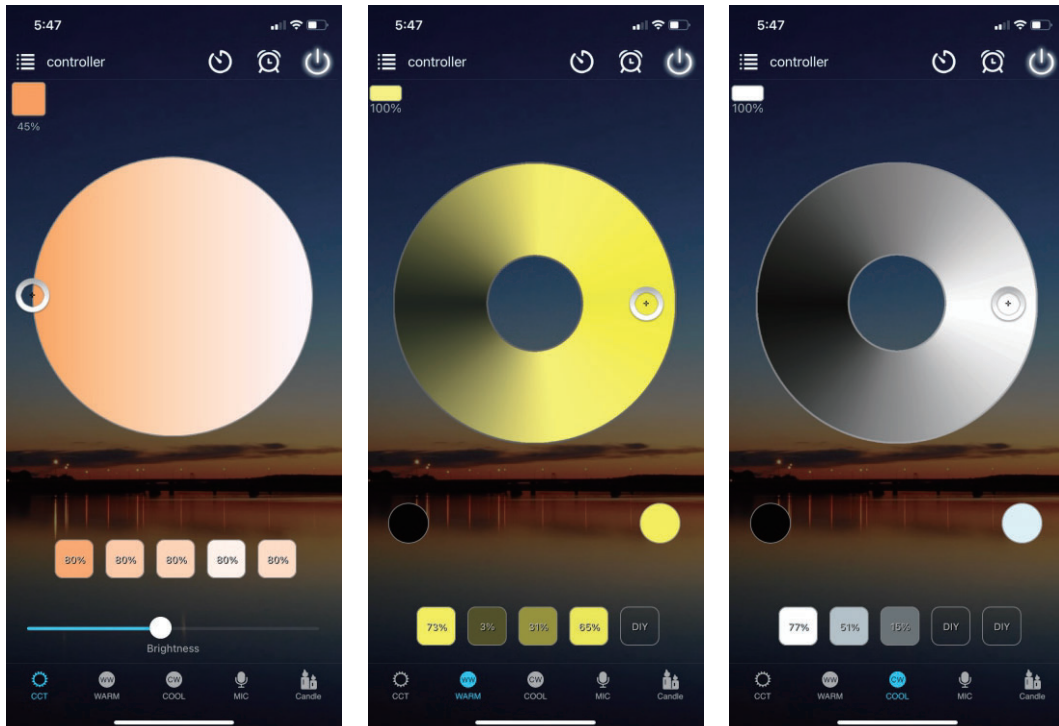
## III:Controller Key Instruction



## IV: APP Interface Instruction

### a) Support brightness and color temperature adjustment

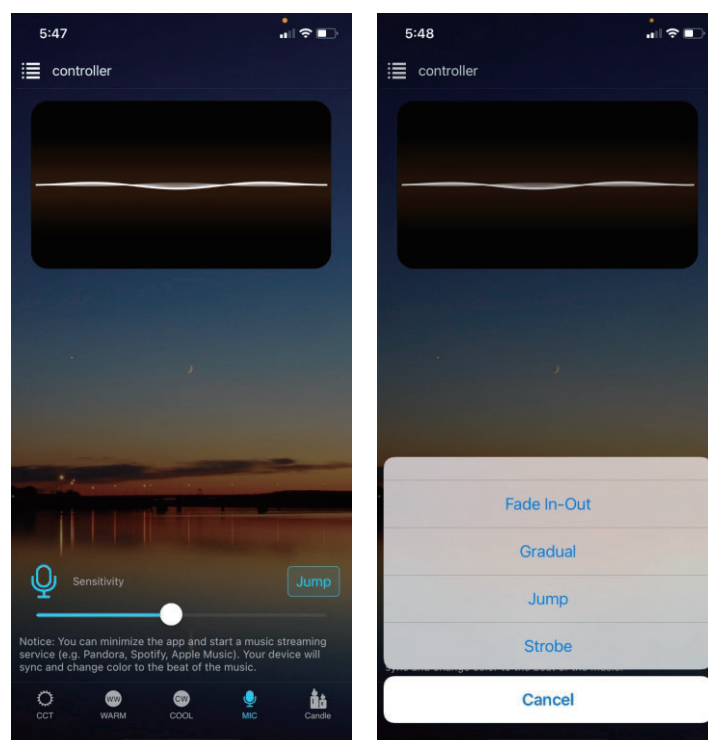
- 1) Stepless brightness dimming makes the light suit for various scenes;
- 2) Adjustable warm white and cold white to meet different atmosphere effects;
- 3) DIY setting, select the appropriate brightness and color temperature, and long press the DIY button to save



### b) Microphone function

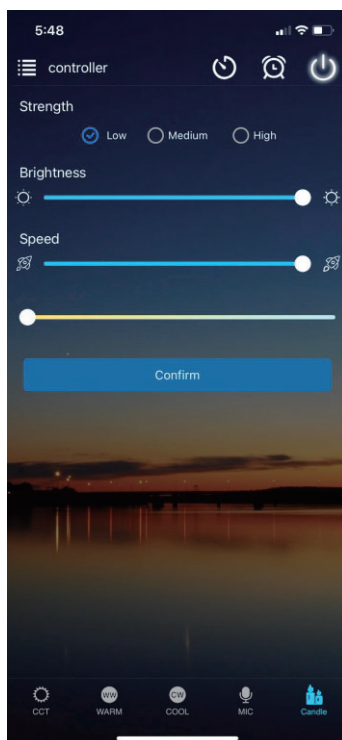
Click/ go to “Mic” interface of the APP.

In this function the connected LED light lights up depending on the volume/noise from the outside like a microphone. This also works when playing music or there is a noise from outside, the light will begin “dancing” base on different rhythm. The microphone sensitivity can be adjusted by the slider.



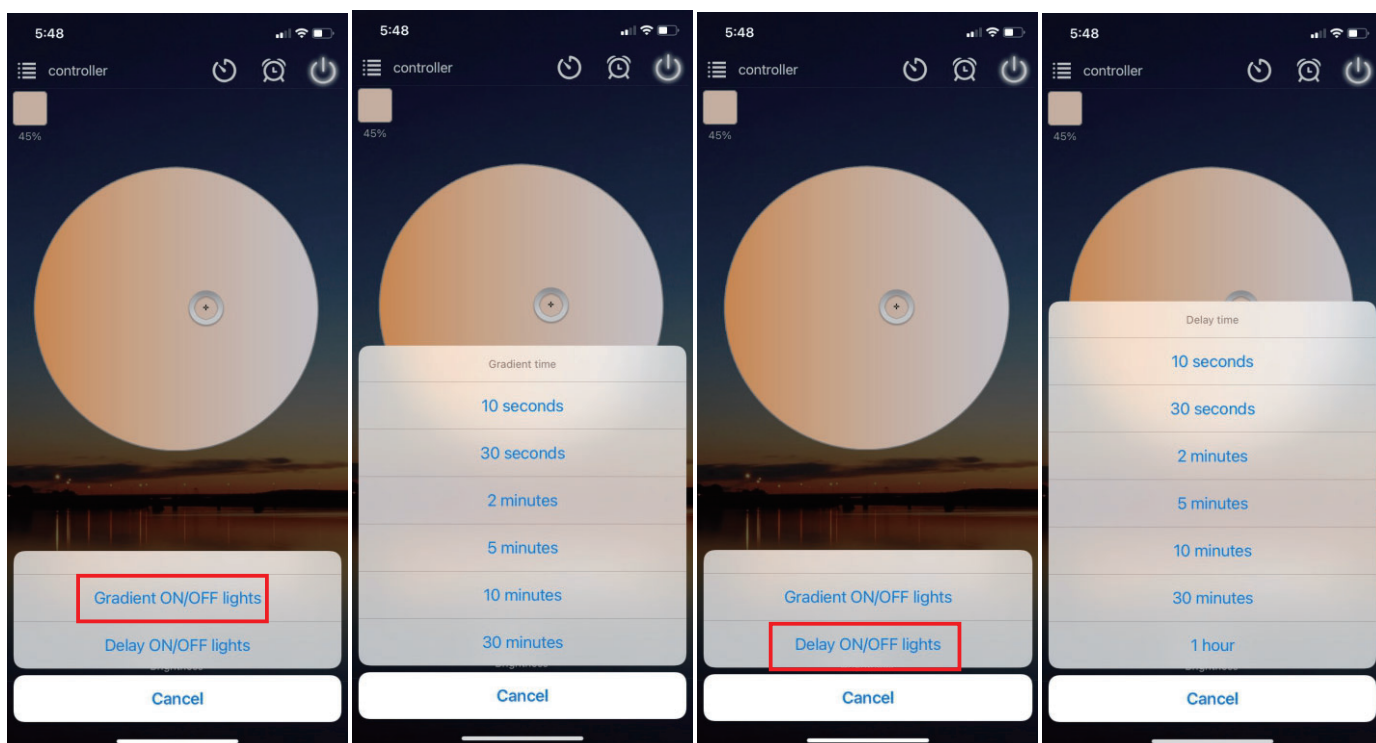
### c) Candle Mode

You can adjust brightness, speed and color freely, the light can be adjusted to breath and beat like the candle light to create a warm atmosphere.



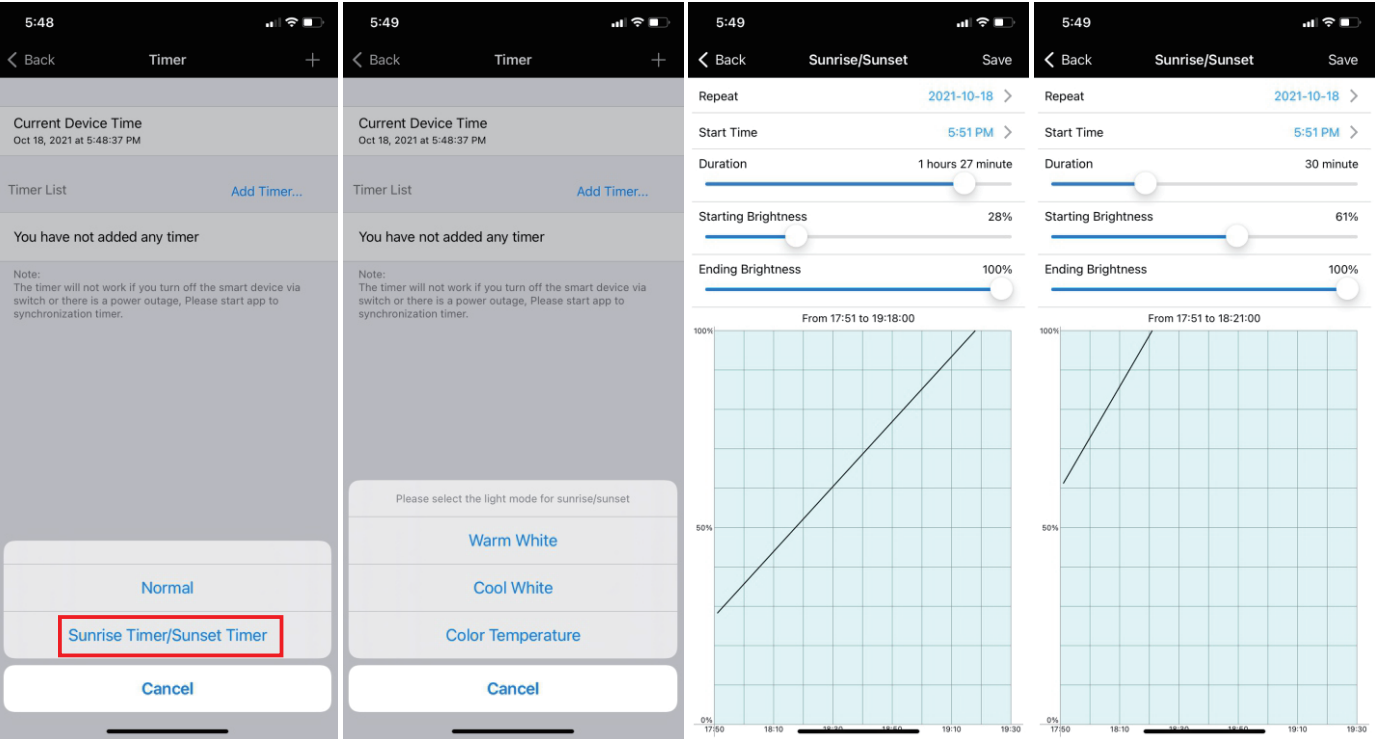
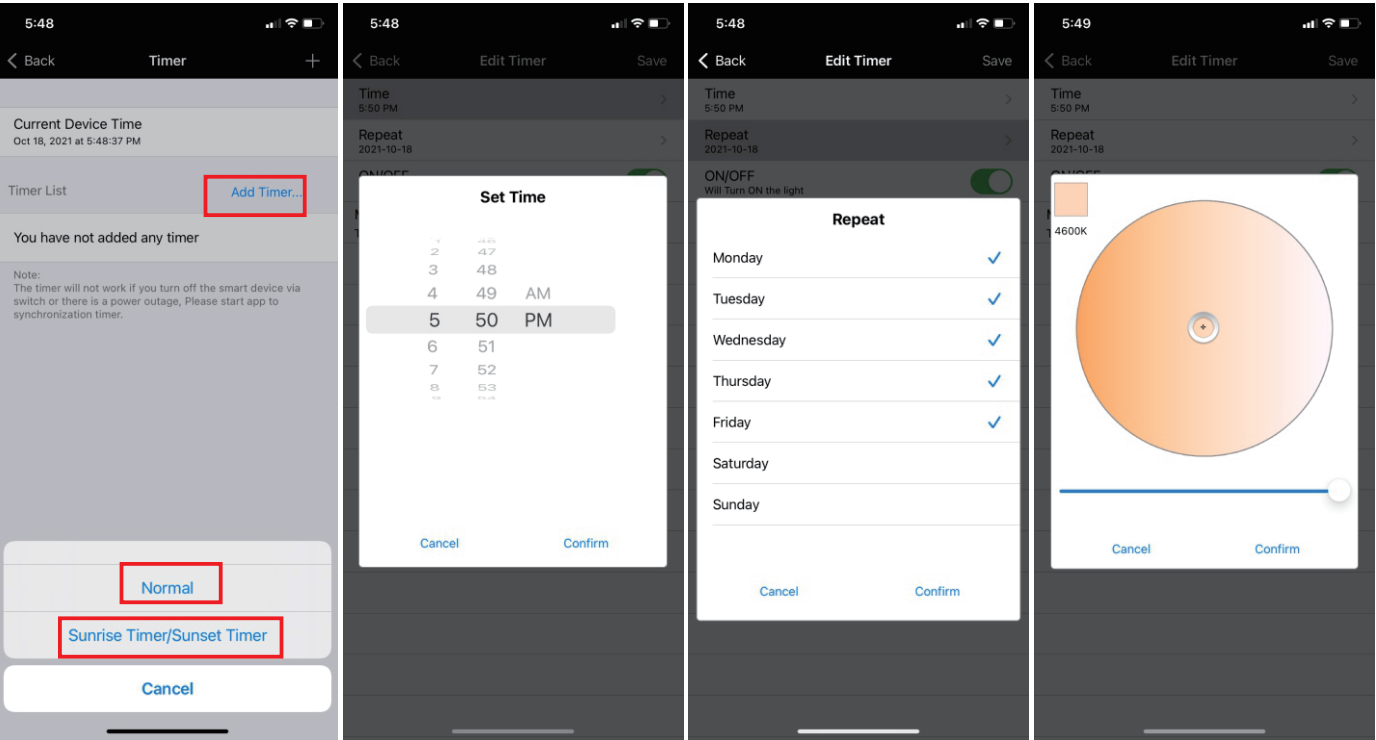
### d) Gradual change or delay switch function

You can set the timer to delay or gradually turn on and off the lights according to your preferences.



e) Timer function

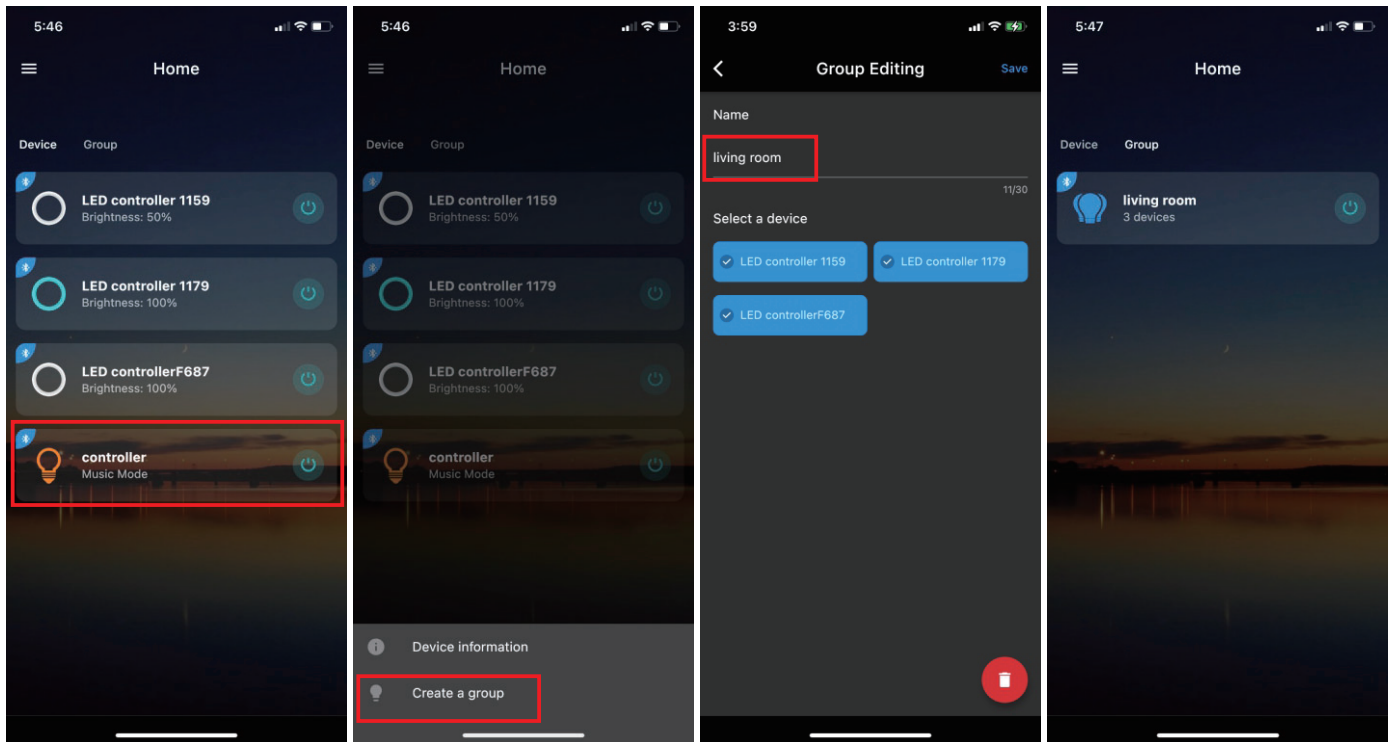
The LED lights will be turn on or turn off automatically according to the timer you set.





## f) Group Function

Long press the device icon and create group(s), add the LED controller into group(s) and rename group(s) to make them easier for use .Now,you can control all the LED lights on/off at the same time.



### Common Problem:

- (1) Check if the power supply is normal.
- (2) Check if the Bluetooth is turn on.
- (3) Check if there are other mobile phone are connected, only support connections one to many,dose not support many to many.
- (4)If the device is connected to the APP but cannot be operated, please exit the APP and turn on the floor lamp again, the APP will go to connect automatically.

### CAUTION:

1. Do not move or disassembly the lamp while energized.
2. Do not install LED lights near flammable materials or liquids.
3. Make sure your LED lights have proper ventilation and are not covered.
4. Do not disassemble or modify the light fixtures yourself.

### Read and Follow the safety instruction

- . Please follow the instructions to install the product and put it in a stable position to avoid product damage or personal injury.
- . Do not mount or place near gas or electric heaters,fireplace, candles or other similar sources of heat.
- . This is an electric product - not a toy! To avoid the risk of fire, burns, personal injury, and electric shock it should not be played with or placed where small children can reach it.
- . Please use the product within the specified voltage to avoid damage or fire.
- . Do not insert or remove the plug with wet hands.
- . Do not expose the product to moisture, hightemperature for a long time.
- . Unplug the product when not use for a long time

## FCC WARNING

This device complies with part 15 of the FCC Rules. Operation is subject to the following two conditions: (1) this device may not cause harmful interference, and (2) this device must accept any interference received, including interference that may cause undesired operation. Any changes or modifications not expressly approved by the party responsible for compliance could void the user's authority to operate the equipment.

NOTE: This equipment has been tested and found to comply with the limits for a Class B digital device, pursuant to Part 15 of the FCC Rules. These limits are designed to provide reasonable protection against harmful interference in a residential installation. This equipment generates, uses and can radiate radio frequency energy and, if not installed and used in accordance with the instructions, may cause harmful interference to radio communications.

However, there is no guarantee that interference will not occur in a particular installation. If this equipment does cause harmful interference to radio or television reception, which can be determined by turning the equipment off and on, the user is encouraged to try to correct the interference by one or more of the following measures:

- Reorient or relocate the receiving antenna.
- Increase the separation between the equipment and receiver.
- Connect the equipment into an outlet on a circuit different from that to which the receiver is connected.
- Consult the dealer or an experienced radio/TV technician for help.

To maintain compliance with FCC's RF Exposure guidelines, This equipment should be installed and operated with minimum 20cm distance between the radiator and your body: Use only the supplied antenna.

Manufacturer: Foshan Youcheng Electric Appliance Manufacturing Co., Ltd.

Address: 5th Floor, No. 3 Wufang Road, Xijiao Village, Beijiao Town, Shunde District, Foshan, Guangdong, China

Contacts: Jason Liang

Tel: +86-18128719807



MADE IN CHINA