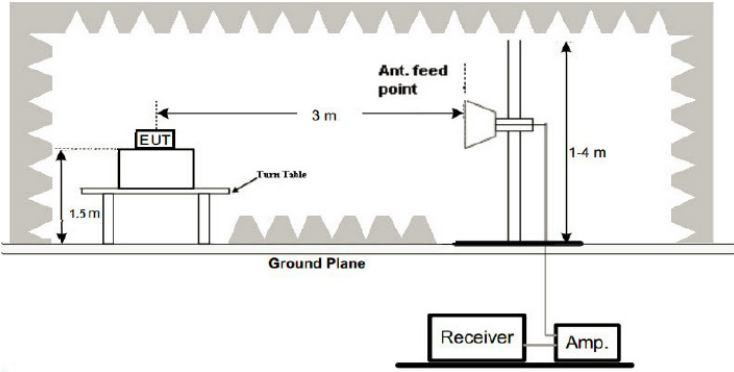




4.6 Band Edge

4.6.1 Test Specification

Test Requirement:	FCC CFR47 Part 15E Section 15.407
Test Method:	ANSI C63.10 2013
Limit:	(1)For transmitters operating in the 5.725-5.85 GHz band: (i) All emissions shall be limited to a level of -27 dBm/MHz at 75 MHz or more above or below the band edge increasing linearly to 10 dBm/MHz at 25 MHz above or below the band edge, and from 25 MHz above or below the band edge increasing linearly to a level of 15.6 dBm/MHz at 5 MHz above or below the band edge, and from 5 MHz above or below the band edge increasing linearly to a level of 27 dBm/MHz at the band edge. The limit of frequency below 1GHz and which fall in restricted bands should comply 15.209.
Test Setup:	 <p>The diagram illustrates the test setup. An EUT (Equipment Under Test) is placed on a turn table at a height of 1.5 m. The turn table is 3 m away from an antenna tower. The antenna tower has a height of 1-4 m. The antenna is labeled 'Ant. feed point'. The receiver and amplifier (Amp.) are connected to the antenna tower. The entire setup is on a ground plane.</p>
Test Mode:	Transmitting mode with modulation
Test Procedure:	<ol style="list-style-type: none">1. The EUT was placed on the top of a rotating table 0.8 meters above the ground at a 3 meter camber. The table was rotated 360 degrees to determine the position of the highest radiation.2. The EUT was set 3 meters away from the interference-receiving antenna, which was mounted on the top of a variable-height antenna tower.3. The antenna height is varied from one meter to four meters above the ground to determine the maximum value of the field strength. Both horizontal and vertical polarizations of the antenna are set to make the measurement.4. For each suspected emission, the EUT was arranged to its worst case and then the antenna was tuned to heights from 1 meter to 4 meters and the rota table was turned from 0 degrees to 360 degrees to find the maximum reading.5. The test-receiver system was set to Peak Detect Function and Specified Bandwidth with Maximum Hold Mode.



	6. If the emission level of the EUT in peak mode was 10dB lower than the limit specified, then testing could be stopped and the peak values of the EUT would be reported. Otherwise the emissions that did not have 10dB margin would be re-tested one by one using peak, quasi peak or average method as specified and then reported in a data sheet.
Test Result:	PASS



4.6.2 Test Instruments

Radiated Emission Test Site (966)					
Name of Equipment	Manufacturer	Model	Serial Number	Calibration Date	Calibration Due
Spectrum analyzer	Agilent	N9020A	HKE-025	Feb. 20, 2024	Feb. 19, 2025
Spectrum analyzer	R&S	FSV3044	HKE-126	Feb. 20, 2024	Feb. 19, 2025
Preamplifier	EMCI	EMC051845S	HKE-006	Feb. 20, 2024	Feb. 19, 2025
Preamplifier	Schwarzbeck	BBV 9743	HKE-016	Feb. 20, 2024	Feb. 19, 2025
Preamplifier	A.H. Systems	SAS-574	HKE-182	Feb. 20, 2024	Feb. 19, 2025
6dB Attenuator	Pasternack	6db	HKE-184	Feb. 20, 2024	Feb. 19, 2025
EMI Test Receiver	Rohde & Schwarz	ESR-7	HKE-010	Feb. 20, 2024	Feb. 19, 2025
Broadband Antenna	Schwarzbeck	VULB9168	HKE-167	Feb. 21, 2024	Feb. 20, 2026
Loop Antenna	COM-POWER	AL-130R	HKE-014	Feb. 21, 2024	Feb. 20, 2026
Horn Antenna	Schwarzbeck	9120D	HKE-013	Feb. 21, 2024	Feb. 20, 2026
EMI Test Software	Tonscend	JS32-RE 5.0.0	HKE-082	N/A	N/A
RSE Test Software	Tonscend	JS36-RSE 5.0.0	HKE-184	N/A	N/A



4.6.3 Test Data

All modes of operation were investigated and the worst-case emissions of ANT.2 are reported.

Operation Mode: 802.11a Mode with 5.8G TX CH Low

Horizontal:

Frequency	Meter Reading	Factor	Emission Level	Limits	Margin	Detector Type
(MHz)	(dBμV)	(dB)	(dBμV/m)	(dBμV/m)	(dB)	
5650	53.93	-2.06	51.87	68.2	-16.33	peak
5700	87.12	-1.96	85.16	105.2	-20.04	peak
5720	95.45	-2.87	92.58	110.8	-18.22	peak
5725	109.17	-2.14	107.03	122.2	-15.17	peak
Remark: Factor = Cable loss + Antenna factor + Attenuator – Preamplifier; Level = Reading + Factor; Margin = Level-Limit.						

Vertical::

Frequency	Meter Reading	Factor	Emission Level	Limits	Margin	Detector Type
(MHz)	(dBμV)	(dB)	(dBμV/m)	(dBμV/m)	(dB)	
5650	58.66	-2.06	56.6	68.2	-11.6	peak
5700	87.24	-1.96	85.28	105.2	-19.92	peak
5720	94.43	-2.87	91.56	110.8	-19.24	peak
5725	110.07	-2.14	107.93	122.2	-14.27	peak
Remark: Factor = Cable loss + Antenna factor + Attenuator – Preamplifier; Level = Reading + Factor; Margin = Level-Limit.						



Operation Mode: TX CH High with 5.8G

Horizontal:

Frequency	Meter Reading	Factor	Emission Level	Limits	Margin	Detector Type
(MHz)	(dBμV)	(dB)	(dBμV/m)	(dBμV/m)	(dB)	
5850	109.78	-1.97	107.81	122.2	-14.39	peak
5855	94.21	-2.13	92.08	110.8	-18.72	peak
5875	86.94	-2.65	84.29	105.2	-20.91	peak
5925	51.37	-2.28	49.09	68.2	-19.11	peak
Remark: Factor = Cable loss + Antenna factor + Attenuator – Preamplifier; Level = Reading + Factor; Margin = Level-Limit.						

Vertical:

Frequency	Meter Reading	Factor	Emission Level	Limits	Margin	Detector Type
(MHz)	(dBμV)	(dB)	(dBμV/m)	(dBμV/m)	(dB)	
5850	103.79	-1.97	101.82	122.2	-20.38	peak
5855	93.24	-2.13	91.11	110.8	-19.69	peak
5875	87.67	-2.65	85.02	105.2	-20.18	peak
5925	54.86	-2.28	52.58	68.2	-15.62	peak
Remark: Factor = Cable loss + Antenna factor + Attenuator – Preamplifier; Level = Reading + Factor; Margin = Level-Limit.						



Operation Mode: 802.11n20 Mode with 5.8G TX CH Low

Horizontal:

Frequency	Meter Reading	Factor	Emission Level	Limits	Margin	Detector Type
(MHz)	(dBμV)	(dB)	(dBμV/m)	(dBμV/m)	(dB)	
5650	56.07	-2.06	54.01	68.2	-14.19	peak
5700	89.12	-1.96	87.16	105.2	-18.04	peak
5720	95.09	-2.87	92.22	110.8	-18.58	peak
5725	113.85	-2.14	111.71	122.2	-10.49	peak
Remark: Factor = Cable loss + Antenna factor + Attenuator – Preamplifier; Level = Reading + Factor; Margin = Level-Limit.						

Vertical:

Frequency	Meter Reading	Factor	Emission Level	Limits	Margin	Detector Type
(MHz)	(dBμV)	(dB)	(dBμV/m)	(dBμV/m)	(dB)	
5650	56.24	-2.06	54.18	68.2	-14.02	peak
5700	96.11	-1.96	94.15	105.2	-11.05	peak
5720	95.96	-2.87	93.09	110.8	-17.71	peak
5725	111.87	-2.14	109.73	122.2	-12.47	peak
Remark: Factor = Cable loss + Antenna factor + Attenuator – Preamplifier; Level = Reading + Factor; Margin = Level-Limit.						



Operation Mode: TX CH High with 5.8G

Horizontal:

Frequency	Meter Reading	Factor	Emission Level	Limits	Margin	Detector Type
(MHz)	(dBμV)	(dB)	(dBμV/m)	(dBμV/m)	(dB)	
5850	109.74	-1.97	107.77	122.2	-14.43	peak
5855	93.59	-2.13	91.46	110.8	-19.34	peak
5875	97.82	-2.65	95.17	105.2	-10.03	peak
5925	53.18	-2.28	50.9	68.2	-17.3	peak
Remark: Factor = Cable loss + Antenna factor + Attenuator – Preamplifier; Level = Reading + Factor; Margin = Level-Limit.						

Vertical:

Frequency	Meter Reading	Factor	Emission Level	Limits	Margin	Detector Type
(MHz)	(dBμV)	(dB)	(dBμV/m)	(dBμV/m)	(dB)	
5850	107.35	-1.97	105.38	122.2	-16.82	peak
5855	94.09	-2.13	91.96	110.8	-18.84	peak
5875	88.24	-2.65	85.59	105.2	-19.61	peak
5925	56.92	-2.28	54.64	68.2	-13.56	peak
Remark: Factor = Cable loss + Antenna factor + Attenuator – Preamplifier; Level = Reading + Factor; Margin = Level-Limit.						



Operation Mode: 802.11n40 Mode with 5.8G TX CH Low

Horizontal:

Frequency	Meter Reading	Factor	Emission Level	Limits	Margin	Detector Type
(MHz)	(dBμV)	(dB)	(dBμV/m)	(dBμV/m)	(dB)	
5650	58.19	-2.06	56.13	68.2	-12.07	peak
5700	91.27	-1.96	89.31	105.2	-15.89	peak
5720	93.53	-2.87	90.66	110.8	-20.14	peak
5725	110.68	-2.14	108.54	122.2	-13.66	peak
Remark: Factor = Cable loss + Antenna factor + Attenuator – Preamplifier; Level = Reading + Factor; Margin = Level-Limit.						

Vertical:

Frequency	Meter Reading	Factor	Emission Level	Limits	Margin	Detector Type
(MHz)	(dBμV)	(dB)	(dBμV/m)	(dBμV/m)	(dB)	
5650	58.78	-2.06	56.72	68.2	-11.48	peak
5700	91.22	-1.96	89.26	105.2	-15.94	peak
5720	98.09	-2.87	95.22	110.8	-15.58	peak
5725	111.15	-2.14	109.01	122.2	-13.19	peak
Remark: Factor = Cable loss + Antenna factor + Attenuator – Preamplifier; Level = Reading + Factor; Margin = Level-Limit.						



Operation Mode: TX CH High with 5.8G

Horizontal:

Frequency	Meter Reading	Factor	Emission Level	Limits	Margin	Detector Type
(MHz)	(dBμV)	(dB)	(dBμV/m)	(dBμV/m)	(dB)	
5850	106.24	-1.97	104.27	122.2	-17.93	peak
5855	92.89	-2.13	90.76	110.8	-20.04	peak
5875	88.05	-2.65	85.4	105.2	-19.8	peak
5925	53.41	-2.28	51.13	68.2	-17.07	peak
Remark: Factor = Cable loss + Antenna factor + Attenuator – Preamplifier; Level = Reading + Factor; Margin = Level-Limit.						

Vertical:

Frequency	Meter Reading	Factor	Emission Level	Limits	Margin	Detector Type
(MHz)	(dBμV)	(dB)	(dBμV/m)	(dBμV/m)	(dB)	
5850	106.74	-1.97	104.77	122.2	-17.43	peak
5855	92.96	-2.13	90.83	110.8	-19.97	peak
5875	87.73	-2.65	85.08	105.2	-20.12	peak
5925	53.85	-2.28	51.57	68.2	-16.63	peak
Remark: Factor = Cable loss + Antenna factor + Attenuator – Preamplifier; Level = Reading + Factor; Margin = Level-Limit.						



Operation Mode: 802.11ac20 Mode with 5.8G TX CH Low

Horizontal:

Frequency	Meter Reading	Factor	Emission Level	Limits	Margin	Detector Type
(MHz)	(dBμV)	(dB)	(dBμV/m)	(dBμV/m)	(dB)	
5650	56.09	-2.06	54.03	68.2	-14.17	peak
5700	87.84	-1.96	85.88	105.2	-19.32	peak
5720	95.52	-2.87	92.65	110.8	-18.15	peak
5725	108.17	-2.14	106.03	122.2	-16.17	peak
Remark: Factor = Cable loss + Antenna factor + Attenuator – Preamplifier; Level = Reading + Factor; Margin = Level-Limit.						

Vertical:

Frequency	Meter Reading	Factor	Emission Level	Limits	Margin	Detector Type
(MHz)	(dBμV)	(dB)	(dBμV/m)	(dBμV/m)	(dB)	
5650	59.93	-2.06	57.87	68.2	-10.33	peak
5700	90.68	-1.96	88.72	105.2	-16.48	peak
5720	94.02	-2.87	91.15	110.8	-19.65	peak
5725	110.11	-2.14	107.97	122.2	-14.23	peak
Remark: Factor = Cable loss + Antenna factor + Attenuator – Preamplifier; Level = Reading + Factor; Margin = Level-Limit.						



Operation Mode: TX CH High with 5.8G

Horizontal:

Frequency	Meter Reading	Factor	Emission Level	Limits	Margin	Detector Type
(MHz)	(dBμV)	(dB)	(dBμV/m)	(dBμV/m)	(dB)	
5850	110.29	-1.97	108.32	122.2	-13.88	peak
5855	94.84	-2.13	92.71	110.8	-18.09	peak
5875	88.51	-2.65	85.86	105.2	-19.34	peak
5925	53.47	-2.28	51.19	68.2	-17.01	peak
Remark: Factor = Cable loss + Antenna factor + Attenuator – Preamplifier; Level = Reading + Factor; Margin = Level-Limit.						

Vertical:

Frequency	Meter Reading	Factor	Emission Level	Limits	Margin	Detector Type
(MHz)	(dBμV)	(dB)	(dBμV/m)	(dBμV/m)	(dB)	
5850	109.09	-1.97	107.12	122.2	-15.08	peak
5855	93.42	-2.13	91.29	110.8	-19.51	peak
5875	87.39	-2.65	84.74	105.2	-20.46	peak
5925	55.14	-2.28	52.86	68.2	-15.34	peak
Remark: Factor = Cable loss + Antenna factor + Attenuator – Preamplifier; Level = Reading + Factor; Margin = Level-Limit.						



Operation Mode: 802.11ac40 Mode with 5.8G TX CH Low

Horizontal:

Frequency	Meter Reading	Factor	Emission Level	Limits	Margin	Detector Type
(MHz)	(dBμV)	(dB)	(dBμV/m)	(dBμV/m)	(dB)	
5650	57.28	-2.06	55.22	68.2	-12.98	peak
5700	88.57	-1.96	86.61	105.2	-18.59	peak
5720	92.16	-2.87	89.29	110.8	-21.51	peak
5725	109.03	-2.14	106.89	122.2	-15.31	peak
Remark: Factor = Cable loss + Antenna factor + Attenuator – Preamplifier; Level = Reading + Factor; Margin = Level-Limit.						

Vertical:

Frequency	Meter Reading	Factor	Emission Level	Limits	Margin	Detector Type
(MHz)	(dBμV)	(dB)	(dBμV/m)	(dBμV/m)	(dB)	
5650	55.95	-2.06	53.89	68.2	-14.31	peak
5700	87.17	-1.96	85.21	105.2	-19.99	peak
5720	93.26	-2.87	90.39	110.8	-20.41	peak
5725	110.31	-2.14	108.17	122.2	-14.03	peak
Remark: Factor = Cable loss + Antenna factor + Attenuator – Preamplifier; Level = Reading + Factor; Margin = Level-Limit.						



Operation Mode: TX CH High with 5.8G

Horizontal:

Frequency	Meter Reading	Factor	Emission Level	Limits	Margin	Detector Type
(MHz)	(dBμV)	(dB)	(dBμV/m)	(dBμV/m)	(dB)	
5850	112.42	-1.97	110.45	122.2	-11.75	peak
5855	92.19	-2.13	90.06	110.8	-20.74	peak
5875	87.06	-2.65	84.41	105.2	-20.79	peak
5925	56.14	-2.28	53.86	68.2	-14.34	peak
Remark: Factor = Cable loss + Antenna factor + Attenuator – Preamplifier; Level = Reading + Factor; Margin = Level-Limit.						

Vertical:

Frequency	Meter Reading	Factor	Emission Level	Limits	Margin	Detector Type
(MHz)	(dBμV)	(dB)	(dBμV/m)	(dBμV/m)	(dB)	
5850	112.38	-1.97	110.41	122.2	-11.79	peak
5855	92.16	-2.13	90.03	110.8	-20.77	peak
5875	88.08	-2.65	85.43	105.2	-19.77	peak
5925	58.81	-2.28	56.53	68.2	-11.67	peak
Remark: Factor = Cable loss + Antenna factor + Attenuator – Preamplifier; Level = Reading + Factor; Margin = Level-Limit.						



Operation Mode: 802.11ac80 Mode with 5.8G TX CH Low

Horizontal:

Frequency	Meter Reading	Factor	Emission Level	Limits	Margin	Detector Type
(MHz)	(dBμV)	(dB)	(dBμV/m)	(dBμV/m)	(dB)	
5650	56.95	-2.06	54.89	68.2	-13.31	peak
5700	88.13	-1.96	86.17	105.2	-19.03	peak
5720	93.26	-2.87	90.39	110.8	-20.41	peak
5725	108.59	-2.14	106.45	122.2	-15.75	peak
Remark: Factor = Cable loss + Antenna factor + Attenuator – Preamplifier; Level = Reading + Factor; Margin = Level-Limit.						

Vertical:

Frequency	Meter Reading	Factor	Emission Level	Limits	Margin	Detector Type
(MHz)	(dBμV)	(dB)	(dBμV/m)	(dBμV/m)	(dB)	
5650	57.37	-2.06	55.31	68.2	-12.89	peak
5700	89.09	-1.96	87.13	105.2	-18.07	peak
5720	94.88	-2.87	92.01	110.8	-18.79	peak
5725	111.46	-2.14	109.32	122.2	-12.88	peak
Remark: Factor = Cable loss + Antenna factor + Attenuator – Preamplifier; Level = Reading + Factor; Margin = Level-Limit.						



Operation Mode: TX CH High with 5.8G

Horizontal:

Frequency	Meter Reading	Factor	Emission Level	Limits	Margin	Detector Type
(MHz)	(dBμV)	(dB)	(dBμV/m)	(dBμV/m)	(dB)	
5850	113.51	-1.97	111.54	122.2	-10.66	peak
5855	92.32	-2.13	90.19	110.8	-20.61	peak
5875	88.93	-2.65	86.28	105.2	-18.92	peak
5925	55.45	-2.28	53.17	68.2	-15.03	peak
Remark: Factor = Cable loss + Antenna factor + Attenuator – Preamplifier; Level = Reading + Factor; Margin = Level-Limit.						

Vertical:

Frequency	Meter Reading	Factor	Emission Level	Limits	Margin	Detector Type
(MHz)	(dBμV)	(dB)	(dBμV/m)	(dBμV/m)	(dB)	
5850	109.82	-1.97	107.85	122.2	-14.35	peak
5855	93.02	-2.13	90.89	110.8	-19.91	peak
5875	88.94	-2.65	86.29	105.2	-18.91	peak
5925	55.65	-2.28	53.37	68.2	-14.83	peak
Remark: Factor = Cable loss + Antenna factor + Attenuator – Preamplifier; Level = Reading + Factor; Margin = Level-Limit.						



Operation Mode: 802.11ax20 Mode with 5.8G TX CH Low

Horizontal:

Frequency	Meter Reading	Factor	Emission Level	Limits	Margin	Detector Type
(MHz)	(dBμV)	(dB)	(dBμV/m)	(dBμV/m)	(dB)	
5650	57.29	-2.06	55.23	68.2	-12.97	peak
5700	89.58	-1.96	87.62	105.2	-17.58	peak
5720	94.13	-2.87	91.26	110.8	-19.54	peak
5725	111.47	-2.14	109.33	122.2	-12.87	peak
Remark: Factor = Cable loss + Antenna factor + Attenuator – Preamplifier; Level = Reading + Factor; Margin = Level-Limit.						

Vertical:

Frequency	Meter Reading	Factor	Emission Level	Limits	Margin	Detector Type
(MHz)	(dBμV)	(dB)	(dBμV/m)	(dBμV/m)	(dB)	
5650	58.22	-2.06	56.16	68.2	-12.04	peak
5700	91.98	-1.96	90.02	105.2	-15.18	peak
5720	93.56	-2.87	90.69	110.8	-20.11	peak
5725	110.05	-2.14	107.91	122.2	-14.29	peak
Remark: Factor = Cable loss + Antenna factor + Attenuator – Preamplifier; Level = Reading + Factor; Margin = Level-Limit.						



Operation Mode: TX CH High with 5.8G

Horizontal:

Frequency	Meter Reading	Factor	Emission Level	Limits	Margin	Detector Type
(MHz)	(dBμV)	(dB)	(dBμV/m)	(dBμV/m)	(dB)	
5850	109.13	-1.97	107.16	122.2	-15.04	peak
5855	94.92	-2.13	92.79	110.8	-18.01	peak
5875	87.74	-2.65	85.09	105.2	-20.11	peak
5925	55.57	-2.28	53.29	68.2	-14.91	peak
Remark: Factor = Cable loss + Antenna factor + Attenuator – Preamplifier; Level = Reading + Factor; Margin = Level-Limit.						

Vertical:

Frequency	Meter Reading	Factor	Emission Level	Limits	Margin	Detector Type
(MHz)	(dBμV)	(dB)	(dBμV/m)	(dBμV/m)	(dB)	
5850	110.93	-1.97	108.96	122.2	-13.24	peak
5855	93.84	-2.13	91.71	110.8	-19.09	peak
5875	88.29	-2.65	85.64	105.2	-19.56	peak
5925	54.76	-2.28	52.48	68.2	-15.72	peak
Remark: Factor = Cable loss + Antenna factor + Attenuator – Preamplifier; Level = Reading + Factor; Margin = Level-Limit.						



Operation Mode: 802.11ax40 Mode with 5.8G TX CH Low

Horizontal:

Frequency	Meter Reading	Factor	Emission Level	Limits	Margin	Detector Type
(MHz)	(dBμV)	(dB)	(dBμV/m)	(dBμV/m)	(dB)	
5650	57.78	-2.06	55.72	68.2	-12.48	peak
5700	87.07	-1.96	85.11	105.2	-20.09	peak
5720	94.29	-2.87	91.42	110.8	-19.38	peak
5725	109.75	-2.14	107.61	122.2	-14.59	peak
Remark: Factor = Cable loss + Antenna factor + Attenuator – Preamplifier; Level = Reading + Factor; Margin = Level-Limit.						

Vertical:

Frequency	Meter Reading	Factor	Emission Level	Limits	Margin	Detector Type
(MHz)	(dBμV)	(dB)	(dBμV/m)	(dBμV/m)	(dB)	
5650	56.41	-2.06	54.35	68.2	-13.85	peak
5700	89.37	-1.96	87.41	105.2	-17.79	peak
5720	93.89	-2.87	91.02	110.8	-19.78	peak
5725	110.25	-2.14	108.11	122.2	-14.09	peak
Remark: Factor = Cable loss + Antenna factor + Attenuator – Preamplifier; Level = Reading + Factor; Margin = Level-Limit.						



Operation Mode: TX CH High with 5.8G

Horizontal:

Frequency	Meter Reading	Factor	Emission Level	Limits	Margin	Detector Type
(MHz)	(dBμV)	(dB)	(dBμV/m)	(dBμV/m)	(dB)	
5850	110.58	-1.97	108.61	122.2	-13.59	peak
5855	94.21	-2.13	92.08	110.8	-18.72	peak
5875	89.14	-2.65	86.49	105.2	-18.71	peak
5925	55.23	-2.28	52.95	68.2	-15.25	peak
Remark: Factor = Cable loss + Antenna factor + Attenuator – Preamplifier; Level = Reading + Factor; Margin = Level-Limit.						

Vertical:

Frequency	Meter Reading	Factor	Emission Level	Limits	Margin	Detector Type
(MHz)	(dBμV)	(dB)	(dBμV/m)	(dBμV/m)	(dB)	
5850	111.14	-1.97	109.17	122.2	-13.03	peak
5855	93.78	-2.13	91.65	110.8	-19.15	peak
5875	89.53	-2.65	86.88	105.2	-18.32	peak
5925	60.64	-2.28	58.36	68.2	-9.84	peak
Remark: Factor = Cable loss + Antenna factor + Attenuator – Preamplifier; Level = Reading + Factor; Margin = Level-Limit.						



Operation Mode: 802.11ax80 Mode with 5.8G TX CH Low

Horizontal:

Frequency	Meter Reading	Factor	Emission Level	Limits	Margin	Detector Type
(MHz)	(dBμV)	(dB)	(dBμV/m)	(dBμV/m)	(dB)	
5650	58.51	-2.06	56.45	68.2	-11.75	peak
5700	89.38	-1.96	87.42	105.2	-17.78	peak
5720	94.59	-2.87	91.72	110.8	-19.08	peak
5725	110.36	-2.14	108.22	122.2	-13.98	peak
Remark: Factor = Cable loss + Antenna factor + Attenuator – Preamplifier; Level = Reading + Factor; Margin = Level-Limit.						

Vertical:

Frequency	Meter Reading	Factor	Emission Level	Limits	Margin	Detector Type
(MHz)	(dBμV)	(dB)	(dBμV/m)	(dBμV/m)	(dB)	
5650	58.84	-2.06	56.78	68.2	-11.42	peak
5700	94.12	-1.96	92.16	105.2	-13.04	peak
5720	95.39	-2.87	92.52	110.8	-18.28	peak
5725	111.27	-2.14	109.13	122.2	-13.07	peak
Remark: Factor = Cable loss + Antenna factor + Attenuator – Preamplifier; Level = Reading + Factor; Margin = Level-Limit.						



Operation Mode: TX CH High with 5.8G

Horizontal:

Frequency	Meter Reading	Factor	Emission Level	Limits	Margin	Detector Type
(MHz)	(dBμV)	(dB)	(dBμV/m)	(dBμV/m)	(dB)	
5850	109.84	-1.97	107.87	122.2	-14.33	peak
5855	94.07	-2.13	91.94	110.8	-18.86	peak
5875	89.92	-2.65	87.27	105.2	-17.93	peak
5925	52.13	-2.28	49.85	68.2	-18.35	peak
Remark: Factor = Cable loss + Antenna factor + Attenuator – Preamplifier; Level = Reading + Factor; Margin = Level-Limit.						

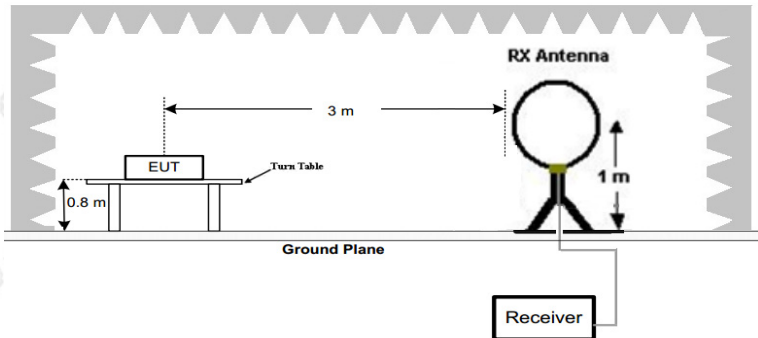
Vertical:

Frequency	Meter Reading	Factor	Emission Level	Limits	Margin	Detector Type
(MHz)	(dBμV)	(dB)	(dBμV/m)	(dBμV/m)	(dB)	
5850	110.96	-1.97	108.99	122.2	-13.21	peak
5855	93.05	-2.13	90.92	110.8	-19.88	peak
5875	89.87	-2.65	87.22	105.2	-17.98	peak
5925	55.71	-2.28	53.43	68.2	-14.77	peak
Remark: Factor = Cable loss + Antenna factor + Attenuator – Preamplifier; Level = Reading + Factor; Margin = Level-Limit.						



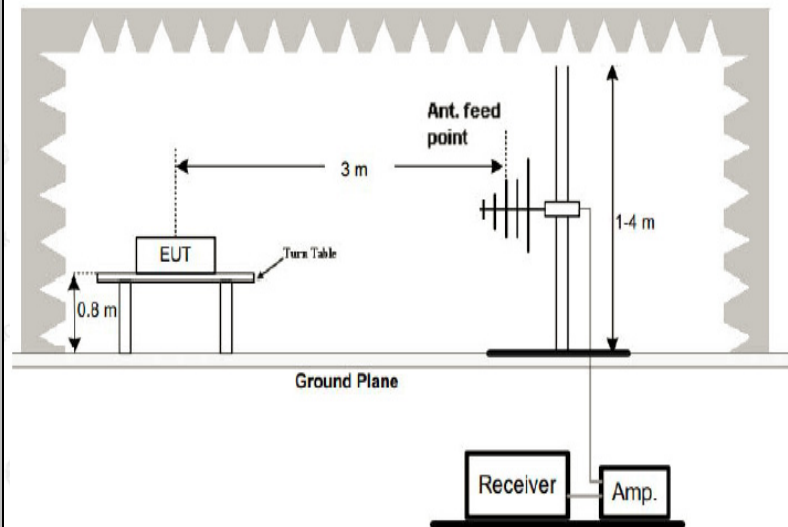
4.7 Spurious Emission

4.7.1.1 Test Specification

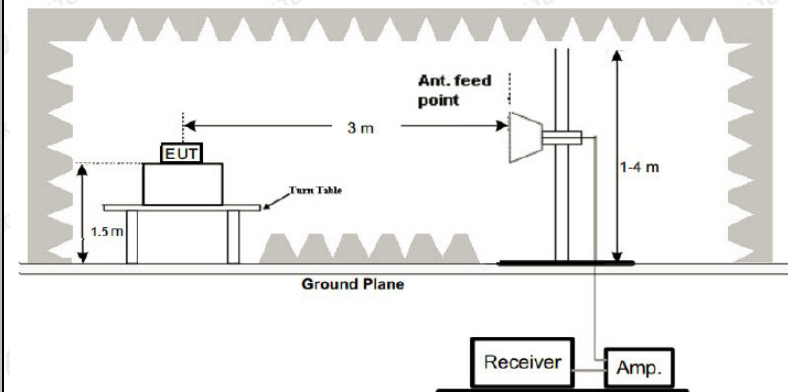
Test Requirement:	FCC CFR47 Part 15 Section 15.407 & 15.209 & 15.205																																	
Test Method:	KDB 789033 D02 v02r01																																	
Frequency Range:	9kHz to 40GHz																																	
Measurement Distance:	3 m																																	
Antenna Polarization:	Horizontal & Vertical																																	
Operation Mode:	Transmitting mode with modulation																																	
Receiver Setup:	<table><tr><th>Frequency</th><th>Detector</th><th>RBW</th><th>VBW</th><th>Remark</th></tr><tr><td>9kHz- 150kHz</td><td>Quasi-peak</td><td>200Hz</td><td>1kHz</td><td>Quasi-peak Value</td></tr><tr><td>150kHz- 30MHz</td><td>Quasi-peak</td><td>9kHz</td><td>30kHz</td><td>Quasi-peak Value</td></tr><tr><td>30MHz-1GHz</td><td>Quasi-peak</td><td>120KHz</td><td>300KHz</td><td>Quasi-peak Value</td></tr><tr><td rowspan="2">Above 1GHz</td><td>Peak</td><td>1MHz</td><td>3MHz</td><td>Peak Value</td></tr><tr><td>Peak</td><td>1MHz</td><td>10Hz</td><td>Average Value</td></tr></table>					Frequency	Detector	RBW	VBW	Remark	9kHz- 150kHz	Quasi-peak	200Hz	1kHz	Quasi-peak Value	150kHz- 30MHz	Quasi-peak	9kHz	30kHz	Quasi-peak Value	30MHz-1GHz	Quasi-peak	120KHz	300KHz	Quasi-peak Value	Above 1GHz	Peak	1MHz	3MHz	Peak Value	Peak	1MHz	10Hz	Average Value
Frequency	Detector	RBW	VBW	Remark																														
9kHz- 150kHz	Quasi-peak	200Hz	1kHz	Quasi-peak Value																														
150kHz- 30MHz	Quasi-peak	9kHz	30kHz	Quasi-peak Value																														
30MHz-1GHz	Quasi-peak	120KHz	300KHz	Quasi-peak Value																														
Above 1GHz	Peak	1MHz	3MHz	Peak Value																														
	Peak	1MHz	10Hz	Average Value																														
Limit:	<p>(1) For transmitters operating in the 5.15-5.25 GHz band: All emissions outside of the 5.15-5.35 GHz band shall not exceed an e.i.r.p. of -27 dBm/MHz.</p> <p>(2) For transmitters operating in the 5.25-5.35 GHz band: All emissions outside of the 5.15-5.35 GHz band shall not exceed an e.i.r.p. of -27 dBm/MHz.</p> <p>(3) For transmitters operating in the 5.47-5.725 GHz band: All emissions outside of the 5.47-5.725 GHz band shall not exceed an e.i.r.p. of -27 dBm/MHz.</p> <p>(4) For transmitters operating in the 5.725-5.85 GHz band:</p> <p>(i) All emissions shall be limited to a level of -27 dBm/MHz at 75 MHz or more above or below the band edge increasing linearly to 10 dBm/MHz at 25 MHz above or below the band edge, and from 25 MHz above or below the band edge increasing linearly to a level of 15.6 dBm/MHz at 5 MHz above or below the band edge, and from 5 MHz above or below the band edge increasing linearly to a level of 27 dBm/MHz at the band edge.</p> <p>The limit of frequency below 1GHz and which fall in restricted b ands should complies 15.209.</p>																																	
Test Setup:	<p>For radiated emissions below 30MHz</p> 																																	



30MHz to 1GHz



Above 1GHz

**Test Procedure:**

1. The EUT was placed on the top of a rotating table 0.8 meters above the ground at a 3 meter camber. The table was rotated 360 degrees to determine the position of the highest radiation.
2. The EUT was set 3 meters away from the interference-receiving antenna, which was mounted on the top of a variable-height antenna tower.
3. The antenna height is varied from one meter to four meters above the ground to determine the maximum value of the field strength. Both horizontal and vertical polarizations of the antenna are set to make the measurement.
4. For each suspected emission, the EUT was arranged to its worst case and then the antenna was tuned to heights from 1 meter to 4 meters and the rotatable was turned from 0 degrees to 360 degrees to find the maximum reading.



	<p>5. The test-receiver system was set to Peak Detect Function and Specified Bandwidth with Maximum Hold Mode.</p> <p>6. If the emission level of the EUT in peak mode was 10dB lower than the limit specified, then testing could be stopped and the peak values of the EUT would be reported. Otherwise the emissions that did not have 10dB margin would be re-tested one by one using peak, quasi-peak or average method as specified and then reported in a data sheet.</p>
Test Results:	PASS



4.7.2 Test Data

All the test modes completed for test. The worst case of Radiated Emission; the test data of this mode was reported.

Below 1GHz

Horizontal



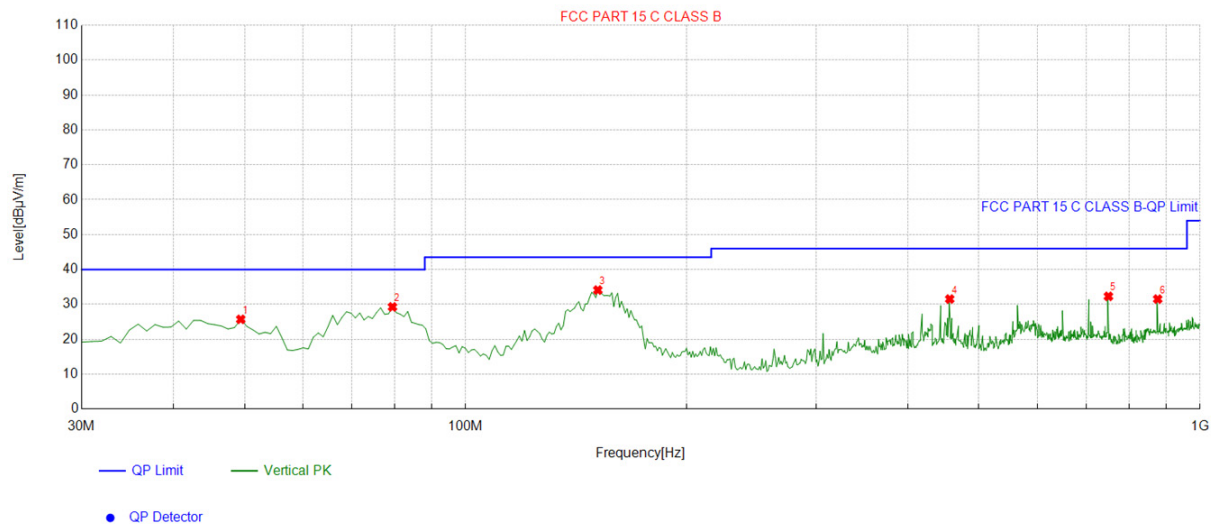
Suspected List

NO.	Freq. [MHz]	Factor [dB]	Reading [dBμV/m]	Level [dBμV/m]	Limit [dBμV/m]	Margin [dB]	Height [cm]	Angle [°]	Polarity
1	55.245245	-14.00	36.99	22.99	40.00	17.01	100	14	Horizontal
2	81.461461	-18.34	43.54	25.20	40.00	14.80	100	168	Horizontal
3	161.08108	-17.67	51.05	33.38	43.50	10.12	100	190	Horizontal
4	264.00400	-13.15	39.24	26.09	46.00	19.91	100	146	Horizontal
5	456.25625	-8.87	45.67	36.80	46.00	9.20	100	152	Horizontal
6	750.46046	-3.85	40.93	37.08	46.00	8.92	100	177	Horizontal

Remark: Factor = Cable loss + Antenna factor + Attenuator – Preamplifier; Level = Reading + Factor; Margin = Level-Limit.



Vertical



Suspected List

NO.	Freq. [MHz]	Factor [dB]	Reading [dBμV/m]	Level [dBμV/m]	Limit [dBμV/m]	Margin [dB]	Height [cm]	Angle [°]	Polarity
1	49.419419	-13.14	38.85	25.71	40.00	14.29	100	107	Vertical
2	79.51952	-18.01	47.28	29.27	40.00	10.73	100	85	Vertical
3	151.37137	-18.06	52.16	34.10	43.50	9.40	100	129	Vertical
4	456.25625	-8.87	40.39	31.52	46.00	14.48	100	80	Vertical
5	750.46046	-3.85	36.15	32.30	46.00	13.70	100	135	Vertical
6	875.71571	-1.76	33.27	31.51	46.00	14.49	100	239	Vertical

Remark: Factor = Cable loss + Antenna factor + Attenuator – Preamplifier; Level = Reading + Factor; Margin = Level-Limit.

Harmonics and Spurious Emissions

Frequency Range (9 kHz-30MHz)

Frequency (MHz)	Level@3m (dBμV/m)	Limit@3m (dBμV/m)
--	--	--
--	--	--
--	--	--
--	--	--

Note: 1. Emission Level=Reading+ Cable loss-Antenna factor-Amp factor

2. The emission levels are 20 dB below the limit value, which are not reported. It is deemed to comply with the requirement



LOW CH 149 (802.11 a Mode with 5.8G)/5745

All modes of operation were investigated and the worst-case of Ant. 3 are reported.

Horizontal:

Frequency	Meter Reading	Factor	Emission Level	Limits	Margin	Detector Type
(MHz)	(dBμV)	(dB)	(dBμV/m)	(dBμV/m)	(dB)	
3368	53.19	-4.59	48.6	68.2	-19.6	peak
11096	49.06	4.21	53.27	74	-20.73	peak
11096	38.57	4.21	42.78	54	-11.22	AVG

Remark: Factor = Cable loss + Antenna factor + Attenuator – Preamplifier; Level = Reading + Factor; Margin = Level-Limit.

Vertical:

Frequency	Meter Reading	Factor	Emission Level	Limits	Margin	Detector Type
(MHz)	(dBμV)	(dB)	(dBμV/m)	(dBμV/m)	(dB)	
3368	58.32	-4.59	53.73	68.2	-14.47	peak
11096	54.27	4.21	58.48	74	-15.52	peak
11096	36.84	4.21	41.05	54	-12.95	AVG

Remark: Factor = Cable loss + Antenna factor + Attenuator – Preamplifier; Level = Reading + Factor; Margin = Level-Limit.



MID CH157 (802.11 a Mode with 5.8G)/5785

Horizontal:

Frequency	Meter Reading	Factor	Emission Level	Limits	Margin	Detector Type
(MHz)	(dBμV)	(dB)	(dBμV/m)	(dBμV/m)	(dB)	
3172	58.02	-4.59	53.43	68.2	-14.77	peak
10523	51.17	4.21	55.38	68.2	-12.82	peak
Remark: Factor = Cable loss + Antenna factor + Attenuator – Preamplifier; Level = Reading + Factor; Margin = Level-Limit.						

Vertical:

Frequency	Meter Reading	Factor	Emission Level	Limits	Margin	Detector Type
(MHz)	(dBμV)	(dB)	(dBμV/m)	(dBμV/m)	(dB)	
3172	57.33	-4.59	52.74	68.2	-15.46	peak
10523	52.86	4.21	57.07	68.2	-11.13	peak
Remark: Factor = Cable loss + Antenna factor + Attenuator – Preamplifier; Level = Reading + Factor; Margin = Level-Limit.						



HIGH CH 165 (802.11a Mode with 5.8G)/5825

Horizontal:

Frequency	Meter Reading	Factor	Emission Level	Limits	Margin	Detector Type
(MHz)	(dBμV)	(dB)	(dBμV/m)	(dBμV/m)	(dB)	
2705	57.29	-4.59	52.7	74	-21.3	peak
2705	49.03	-4.59	44.44	54	-9.56	AVG
11717	54.72	4.84	59.56	74	-14.44	peak
11717	36.18	4.84	41.02	54	-12.98	AVG
Remark: Factor = Cable loss + Antenna factor + Attenuator – Preamplifier; Level = Reading + Factor; Margin = Level-Limit.						

Vertical:

Frequency	Meter Reading	Factor	Emission Level	Limits	Margin	Detector Type
(MHz)	(dBμV)	(dB)	(dBμV/m)	(dBμV/m)	(dB)	
2705	59.84	-4.59	55.25	74	-18.75	peak
2705	44.01	-4.59	39.42	54	-14.58	AVG
11717	50.29	4.84	55.13	74	-18.87	peak
11717	38.83	4.84	43.67	54	-10.33	AVG
Remark: Factor = Cable loss + Antenna factor + Attenuator – Preamplifier; Level = Reading + Factor; Margin = Level-Limit.						

Remark:

- (1) Measuring frequencies from 1 GHz to the 40 GHz.
- (2) "F" denotes fundamental frequency; "H" denotes spurious frequency. "E" denotes band edge frequency.
- (3) * denotes emission frequency which appearing within the Restricted Bands specified in provision of 15.205, then the general radiated emission limits in 15.209 apply.
- (4) The emissions are attenuated more than 20dB below the permissible limits are not record in the report.
- (5) The IF bandwidth of EMI Test Receiver between 30MHz to 1GHz was 120KHz, 1 MHz for measuring above 1 GHz, below 30MHz was 10KHz.
- (6) When the test results of Peak Detected below the limits of Average Detected, the Average Detected is not need completed. For example: Top Channel at Fundamental 73.16dBuV/m(PK Value) <93.98(AV Limit), at harmonic 53.20 dBuV/m(PK Value) <54 dBuV/m(AV Limit), the Average Detected not need to completed.

**5.8G 802.11n20 Mode**

All modes of operation were investigated and the worst-case of MIMO are reported.

LOW CH 149

Horizontal:

Frequency (MHz)	Meter Reading (dBμV)	Factor (dB)	Emission Level (dBμV/m)	Limits (dBμV/m)	Margin (dB)	Detector Type
3368	61.84	-4.59	57.25	68.2	-10.95	peak
11096	57.02	4.21	61.23	74	-12.77	peak
11096	40.24	4.21	44.45	54	-9.55	AVG
Remark: Factor = Cable loss + Antenna factor + Attenuator – Preamplifier; Level = Reading + Factor; Margin = Level-Limit.						

Vertical:

Frequency (MHz)	Meter Reading (dBμV)	Factor (dB)	Emission Level (dBμV/m)	Limits (dBμV/m)	Margin (dB)	Detector Type
3368	63.32	-4.59	58.73	68.2	-9.47	peak
11096	55.88	4.21	60.09	74	-13.91	peak
11096	37.05	4.21	41.26	54	-12.74	AVG
Remark: Factor = Cable loss + Antenna factor + Attenuator – Preamplifier; Level = Reading + Factor; Margin = Level-Limit.						



MID CH157

Horizontal:

Frequency	Meter Reading	Factor	Emission Level	Limits	Margin	Detector Type
(MHz)	(dBμV)	(dB)	(dBμV/m)	(dBμV/m)	(dB)	
3172	62.19	-4.59	57.6	68.2	-10.6	peak
10523	53.86	4.21	58.07	68.2	-10.13	peak

Remark: Factor = Cable loss + Antenna factor + Attenuator – Preamplifier; Level = Reading + Factor; Margin = Level-Limit.

Vertical:

Frequency	Meter Reading	Factor	Emission Level	Limits	Margin	Detector Type
(MHz)	(dBμV)	(dB)	(dBμV/m)	(dBμV/m)	(dB)	
3172	56.07	-4.59	51.48	68.2	-16.72	peak
10523	54.92	4.21	59.13	68.2	-9.07	peak

Remark: Factor = Cable loss + Antenna factor + Attenuator – Preamplifier; Level = Reading + Factor; Margin = Level-Limit.



HIGH CH165

Horizontal:

Frequency	Meter Reading	Factor	Emission Level	Limits	Margin	Detector Type
(MHz)	(dBμV)	(dB)	(dBμV/m)	(dBμV/m)	(dB)	
2705	59.73	-4.59	55.14	74	-18.86	peak
2705	48.56	-4.59	43.97	54	-10.03	AVG
11717	56.18	4.84	61.02	74	-12.98	peak
11717	38.79	4.84	43.63	54	-10.37	AVG
Remark: Factor = Cable loss + Antenna factor + Attenuator – Pre-amplifier; Level = Reading + Factor; Margin = Level-Limit.						

Vertical:

Frequency	Meter Reading	Factor	Emission Level	Limits	Margin	Detector Type
(MHz)	(dBμV)	(dB)	(dBμV/m)	(dBμV/m)	(dB)	
2705	60.25	-4.59	55.66	74	-18.34	peak
2705	47.17	-4.59	42.58	54	-11.42	AVG
11717	52.97	4.84	57.81	74	-16.19	peak
11717	37.33	4.84	42.17	54	-11.83	AVG
Remark: Factor = Cable loss + Antenna factor + Attenuator – Pre-amplifier; Level = Reading + Factor; Margin = Level-Limit.						

Remark:

- (1) Measuring frequencies from 1 GHz to the 40 GHz.
- (2) "F" denotes fundamental frequency; "H" denotes spurious frequency. "E" denotes band edge frequency.
- (3) * denotes emission frequency which appearing within the Restricted Bands specified in provision of 15.205, then the general radiated emission limits in 15.209 apply.
- (4) The emissions are attenuated more than 20dB below the permissible limits are not record in the report.
- (5) The IF bandwidth of EMI Test Receiver between 30MHz to 1GHz was 120KHz, 1 MHz for measuring above 1 GHz, below 30MHz was 10KHz.
- (6) When the test results of Peak Detected below the limits of Average Detected, the Average Detected is not need completed. For example: Top Channel at Fundamental 73.16dBuV/m(PK Value) <93.98(AV Limit), at harmonic 53.20 dBuV/m(PK Value) <54 dBuV/m(AV Limit), the Average Detected not need to completed.



5.8G 802.11n40 Mode

All modes of operation were investigated and the worst-case of MIMO are reported.

LOW CH 151

Horizontal:

Frequency (MHz)	Meter Reading (dBμV)	Factor (dB)	Emission Level (dBμV/m)	Limits (dBμV/m)	Margin (dB)	Detector Type
3368	62.82	-4.59	58.23	68.2	-9.97	
11096	61.07	4.21	65.28	74	-8.72	peak
11096	39.18	4.21	43.39	54	-10.61	AVG

Remark: Factor = Cable loss + Antenna factor + Attenuator – Preamplifier; Level = Reading + Factor; Margin = Level-Limit.

Vertical:

Frequency (MHz)	Meter Reading (dBμV)	Factor (dB)	Emission Level (dBμV/m)	Limits (dBμV/m)	Margin (dB)	Detector Type
3368	63.45	-4.59	58.86	68.2	-9.34	
11096	56.72	4.21	60.93	74	-13.07	peak
11096	38.13	4.21	42.34	54	-11.66	AVG

Remark: Factor = Cable loss + Antenna factor + Attenuator – Preamplifier; Level = Reading + Factor; Margin = Level-Limit.



HIGH CH159

Horizontal:

Frequency	Meter Reading	Factor	Emission Level	Limits	Margin	Detector Type
(MHz)	(dBμV)	(dB)	(dBμV/m)	(dBμV/m)	(dB)	
3172	58.77	-4.59	54.18	68.2	-14.02	peak
10523	52.63	4.21	56.84	68.2	-11.36	peak
Remark: Factor = Cable loss + Antenna factor + Attenuator – Preamplifier; Level = Reading + Factor; Margin = Level-Limit.						

Vertical:

Frequency	Meter Reading	Factor	Emission Level	Limits	Margin	Detector Type
(MHz)	(dBμV)	(dB)	(dBμV/m)	(dBμV/m)	(dB)	
3172	57.86	-4.59	53.27	68.2	-14.93	peak
10523	51.17	4.21	55.38	68.2	-12.82	peak
Remark: Factor = Cable loss + Antenna factor + Attenuator – Preamplifier; Level = Reading + Factor; Margin = Level-Limit.						

Remark:

- (1) Measuring frequencies from 1 GHz to the 40 GHz.
- (2) "F" denotes fundamental frequency; "H" denotes spurious frequency. "E" denotes band edge frequency.
- (3) * denotes emission frequency which appearing within the Restricted Bands specified in provision of 15.205, then the general radiated emission limits in 15.209 apply.
- (4) The emissions are attenuated more than 20dB below the permissible limits are not record in the report.
- (5) The IF bandwidth of EMI Test Receiver between 30MHz to 1GHz was 120KHz, 1 MHz for measuring above 1 GHz, below 30MHz was 10KHz.
- (6) When the test results of Peak Detected below the limits of Average Detected, the Average Detected is not need completed. For example: Top Channel at Fundamental 73.16dBuV/m(PK Value) <93.98(AV Limit), at harmonic 53.20 dBuV/m(PK Value) <54 dBuV/m(AV Limit), the Average Detected not need to completed.

**5.8G 802.11ac20 Mode**

All modes of operation were investigated and the worst-case of MIMO are reported.

LOW CH 149

Horizontal:

Frequency	Meter Reading	Factor	Emission Level	Limits	Margin	Detector Type
(MHz)	(dBμV)	(dB)	(dBμV/m)	(dBμV/m)	(dB)	
3368	61.08	-4.59	56.49	68.2	-11.71	peak
11096	51.16	4.21	55.37	74	-18.63	peak
11096	34.27	4.21	38.48	54	-15.52	AVG
Remark: Factor = Cable loss + Antenna factor + Attenuator – Preamplifier; Level = Reading + Factor; Margin = Level-Limit.						

Vertical:

Frequency	Meter Reading	Factor	Emission Level	Limits	Margin	Detector Type
(MHz)	(dBμV)	(dB)	(dBμV/m)	(dBμV/m)	(dB)	
3368	61.49	-4.59	56.9	68.2	-11.3	peak
11096	57.87	4.21	62.08	74	-11.92	peak
11096	37.06	4.21	41.27	54	-12.73	AVG
Remark: Factor = Cable loss + Antenna factor + Attenuator – Preamplifier; Level = Reading + Factor; Margin = Level-Limit.						



MID CH157

Horizontal:

Frequency	Meter Reading	Factor	Emission Level	Limits	Margin	Detector Type
(MHz)	(dBμV)	(dB)	(dBμV/m)	(dBμV/m)	(dB)	
3172	61.33	-4.59	56.74	68.2	-11.46	peak
10523	53.57	4.21	57.78	68.2	-10.42	peak
Remark: Factor = Cable loss + Antenna factor + Attenuator – Preamplifier; Level = Reading + Factor; Margin = Level-Limit.						

Vertical:

Frequency	Meter Reading	Factor	Emission Level	Limits	Margin	Detector Type
(MHz)	(dBμV)	(dB)	(dBμV/m)	(dBμV/m)	(dB)	
3172	59.28	-4.59	54.69	68.2	-13.51	peak
10523	52.36	4.21	56.57	68.2	-11.63	peak
Remark: Factor = Cable loss + Antenna factor + Attenuator – Preamplifier; Level = Reading + Factor; Margin = Level-Limit.						



HIGH CH165

Horizontal:

Frequency	Meter Reading	Factor	Emission Level	Limits	Margin	Detector Type
(MHz)	(dBμV)	(dB)	(dBμV/m)	(dBμV/m)	(dB)	
2705	61.78	-4.59	57.19	74	-16.81	peak
2705	49.05	-4.59	44.46	54	-9.54	AVG
11717	55.71	4.84	60.55	74	-13.45	peak
11717	39.63	4.84	44.47	54	-9.53	AVG
Remark: Factor = Cable loss + Antenna factor + Attenuator – Preamplifier; Level = Reading + Factor; Margin = Level-Limit.						

Vertical:

Frequency	Meter Reading	Factor	Emission Level	Limits	Margin	Detector Type
(MHz)	(dBμV)	(dB)	(dBμV/m)	(dBμV/m)	(dB)	
2705	59.87	-4.59	55.28	74	-18.72	peak
2705	47.62	-4.59	43.03	54	-10.97	AVG
11717	52.93	4.84	57.77	74	-16.23	peak
11717	38.67	4.84	43.51	54	-10.49	AVG
Remark: Factor = Cable loss + Antenna factor + Attenuator – Preamplifier; Level = Reading + Factor; Margin = Level-Limit.						

Remark:

- (1) Measuring frequencies from 1 GHz to the 40 GHz.
- (2) "F" denotes fundamental frequency; "H" denotes spurious frequency. "E" denotes band edge frequency.
- (3) * denotes emission frequency which appearing within the Restricted Bands specified in provision of 15.205, then the general radiated emission limits in 15.209 apply.
- (4) The emissions are attenuated more than 20dB below the permissible limits are not record in the report.
- (5) The IF bandwidth of EMI Test Receiver between 30MHz to 1GHz was 120KHz, 1 MHz for measuring above 1 GHz, below 30MHz was 10KHz.
- (6) When the test results of Peak Detected below the limits of Average Detected, the Average Detected is not need completed. For example: Top Channel at Fundamental 73.16dBuV/m(PK Value) <93.98(AV Limit), at harmonic 53.20 dBuV/m(PK Value) <54 dBuV/m(AV Limit), the Average Detected not need to completed.

**5.8G 802.11ac40 Mode**

All modes of operation were investigated and the worst-case of MIMO are reported.

LOW CH 151

Horizontal:

Frequency (MHz)	Meter Reading (dBμV)	Factor (dB)	Emission Level (dBμV/m)	Limits (dBμV/m)	Margin (dB)	Detector Type
3368	61.85	-4.59	57.26	68.2	-10.94	peak
11096	58.62	4.21	62.83	74	-11.17	peak
11096	36.87	4.21	41.08	54	-12.92	AVG

Remark: Factor = Cable loss + Antenna factor + Attenuator – Preamplifier; Level = Reading + Factor; Margin = Level-Limit.

Vertical:

Frequency (MHz)	Meter Reading (dBμV)	Factor (dB)	Emission Level (dBμV/m)	Limits (dBμV/m)	Margin (dB)	Detector Type
3368	61.41	-4.59	56.82	68.2	-11.38	peak
11096	57.96	4.21	62.17	74	-11.83	peak
11096	39.47	4.21	43.68	54	-10.32	AVG

Remark: Factor = Cable loss + Antenna factor + Attenuator – Preamplifier; Level = Reading + Factor; Margin = Level-Limit.



HIGH CH159

Horizontal:

Frequency	Meter Reading	Factor	Emission Level	Limits	Margin	Detector Type
(MHz)	(dBμV)	(dB)	(dBμV/m)	(dBμV/m)	(dB)	
3172	58.35	-4.59	53.76	68.2	-14.44	peak
10523	52.86	4.21	57.07	68.2	-11.13	peak
Remark: Factor = Cable loss + Antenna factor + Attenuator – Preamplifier; Level = Reading + Factor; Margin = Level-Limit.						

Vertical:

Frequency	Meter Reading	Factor	Emission Level	Limits	Margin	Detector Type
(MHz)	(dBμV)	(dB)	(dBμV/m)	(dBμV/m)	(dB)	
3172	57.01	-4.59	52.42	68.2	-15.78	peak
10523	51.22	4.21	55.43	68.2	-12.77	peak
Remark: Factor = Cable loss + Antenna factor + Attenuator – Preamplifier; Level = Reading + Factor; Margin = Level-Limit.						

Remark:

- (1) Measuring frequencies from 1 GHz to the 40 GHz.
- (2) "F" denotes fundamental frequency; "H" denotes spurious frequency. "E" denotes band edge frequency.
- (3) * denotes emission frequency which appearing within the Restricted Bands specified in provision of 15.205, then the general radiated emission limits in 15.209 apply.
- (4) The emissions are attenuated more than 20dB below the permissible limits are not record in the report.
- (5) The IF bandwidth of EMI Test Receiver between 30MHz to 1GHz was 120KHz, 1 MHz for measuring above 1 GHz, below 30MHz was 10KHz.
- (6) When the test results of Peak Detected below the limits of Average Detected, the Average Detected is not need completed. For example: Top Channel at Fundamental 73.16dBuV/m(PK Value) <93.98(AV Limit), at harmonic 53.20 dBuV/m(PK Value) <54 dBuV/m(AV Limit), the Average Detected not need to completed.



5.8G 802.11ac80 Mode

All modes of operation were investigated and the worst-case of MIMO are reported.

CH 155

Horizontal:

Frequency (MHz)	Meter Reading (dBμV)	Factor (dB)	Emission Level (dBμV/m)	Limits (dBμV/m)	Margin (dB)	Detector Type
3368	60.39	-4.59	55.8	68.2	-12.4	peak
11096	57.58	4.21	61.79	74	-12.21	peak
11096	36.07	4.21	40.28	54	-13.72	AVG

Remark: Factor = Cable loss + Antenna factor + Attenuator – Preamplifier; Level = Reading + Factor; Margin = Level-Limit.

Vertical:

Frequency (MHz)	Meter Reading (dBμV)	Factor (dB)	Emission Level (dBμV/m)	Limits (dBμV/m)	Margin (dB)	Detector Type
3368	62.46	-4.59	57.87	68.2	-10.33	peak
11096	54.18	4.21	58.39	74	-15.61	peak
11096	37.53	4.21	41.74	54	-12.26	AVG

Remark: Factor = Cable loss + Antenna factor + Attenuator – Preamplifier; Level = Reading + Factor; Margin = Level-Limit.

Remark:

- (1) Measuring frequencies from 1 GHz to the 40 GHz.
- (2) "F" denotes fundamental frequency; "H" denotes spurious frequency. "E" denotes band edge frequency.
- (3) * denotes emission frequency which appearing within the Restricted Bands specified in provision of 15.205, then the general radiated emission limits in 15.209 apply.
- (4) The emissions are attenuated more than 20dB below the permissible limits are not record in the report.
- (5) The IF bandwidth of EMI Test Receiver between 30MHz to 1GHz was 120KHz, 1 MHz for measuring above 1 GHz, below 30MHz was 10KHz.
- (6) When the test results of Peak Detected below the limits of Average Detected, the Average Detected is not need completed. For example: Top Channel at Fundamental 73.16dBuV/m(PK Value) <93.98(AV Limit), at harmonic 53.20 dBuV/m(PK Value) <54 dBuV/m(AV Limit), the Average Detected not need to completed.



5.8G 802.11ax20 Mode

All modes of operation were investigated and the worst-case of MIMO are reported.

LOW CH 149

Horizontal:

Frequency	Meter Reading	Factor	Emission Level	Limits	Margin	Detector Type
(MHz)	(dBμV)	(dB)	(dBμV/m)	(dBμV/m)	(dB)	
3368	62.82	-4.59	58.23	68.2	-9.97	peak
11096	50.44	4.21	54.65	74	-19.35	peak
11096	38.73	4.21	42.94	54	-11.06	AVG
Remark: Factor = Cable loss + Antenna factor + Attenuator – Preamplifier; Level = Reading + Factor; Margin = Level-Limit.						

Vertical:

Frequency	Meter Reading	Factor	Emission Level	Limits	Margin	Detector Type
(MHz)	(dBμV)	(dB)	(dBμV/m)	(dBμV/m)	(dB)	
3368	61.35	-4.59	56.76	68.2	-11.44	peak
11096	56.86	4.21	61.07	74	-12.93	peak
11096	37.78	4.21	41.99	54	-12.01	AVG
Remark: Factor = Cable loss + Antenna factor + Attenuator – Preamplifier; Level = Reading + Factor; Margin = Level-Limit.						



MID CH157

Horizontal:

Frequency	Meter Reading	Factor	Emission Level	Limits	Margin	Detector Type
(MHz)	(dBμV)	(dB)	(dBμV/m)	(dBμV/m)	(dB)	
3172	62.51	-4.59	57.92	68.2	-10.28	peak
10523	53.24	4.21	57.45	68.2	-10.75	peak
Remark: Factor = Cable loss + Antenna factor + Attenuator – Preamplifier; Level = Reading + Factor; Margin = Level-Limit.						

Vertical:

Frequency	Meter Reading	Factor	Emission Level	Limits	Margin	Detector Type
(MHz)	(dBμV)	(dB)	(dBμV/m)	(dBμV/m)	(dB)	
3172	58.07	-4.59	53.48	68.2	-14.72	peak
10523	54.54	4.21	58.75	68.2	-9.45	peak
Remark: Factor = Cable loss + Antenna factor + Attenuator – Preamplifier; Level = Reading + Factor; Margin = Level-Limit.						



HIGH CH165

Horizontal:

Frequency	Meter Reading	Factor	Emission Level	Limits	Margin	Detector Type
(MHz)	(dBμV)	(dB)	(dBμV/m)	(dBμV/m)	(dB)	
2705	61.23	-4.59	56.64	74	-17.36	peak
2705	48.18	-4.59	43.59	54	-10.41	AVG
11717	55.07	4.84	59.91	74	-14.09	peak
11717	38.41	4.84	43.25	54	-10.75	AVG
Remark: Factor = Cable loss + Antenna factor + Attenuator – Preamplifier; Level = Reading + Factor; Margin = Level-Limit.						

Vertical:

Frequency	Meter Reading	Factor	Emission Level	Limits	Margin	Detector Type
(MHz)	(dBμV)	(dB)	(dBμV/m)	(dBμV/m)	(dB)	
2705	58.32	-4.59	53.73	74	-20.27	peak
2705	45.63	-4.59	41.04	54	-12.96	AVG
11717	52.28	4.84	57.12	74	-16.88	peak
11717	37.62	4.84	42.46	54	-11.54	AVG
Remark: Factor = Cable loss + Antenna factor + Attenuator – Preamplifier; Level = Reading + Factor; Margin = Level-Limit.						

Remark:

- (1) Measuring frequencies from 1 GHz to the 40 GHz.
- (2) "F" denotes fundamental frequency; "H" denotes spurious frequency. "E" denotes band edge frequency.
- (3) * denotes emission frequency which appearing within the Restricted Bands specified in provision of 15.205, then the general radiated emission limits in 15.209 apply.
- (4) The emissions are attenuated more than 20dB below the permissible limits are not record in the report.
- (5) The IF bandwidth of EMI Test Receiver between 30MHz to 1GHz was 120KHz, 1 MHz for measuring above 1 GHz, below 30MHz was 10KHz.
- (6) When the test results of Peak Detected below the limits of Average Detected, the Average Detected is not need completed. For example: Top Channel at Fundamental 73.16dBuV/m(PK Value) <93.98(AV Limit), at harmonic 53.20 dBuV/m(PK Value) <54 dBuV/m(AV Limit), the Average Detected not need to completed.

**5.8G 802.11ax40 Mode**

All modes of operation were investigated and the worst-case of MIMO are reported.

LOW CH 151

Horizontal:

Frequency (MHz)	Meter Reading (dBμV)	Factor (dB)	Emission Level (dBμV/m)	Limits (dBμV/m)	Margin (dB)	Detector Type
3368	60.86	-4.59	56.27	68.2	-11.93	peak
11096	59.37	4.21	63.58	74	-10.42	peak
11096	36.92	4.21	41.13	54	-12.87	AVG
Remark: Factor = Cable loss + Antenna factor + Attenuator – Preamplifier; Level = Reading + Factor; Margin = Level-Limit.						

Vertical:

Frequency (MHz)	Meter Reading (dBμV)	Factor (dB)	Emission Level (dBμV/m)	Limits (dBμV/m)	Margin (dB)	Detector Type
3368	63.83	-4.59	59.24	68.2	-8.96	peak
11096	55.08	4.21	59.29	74	-14.71	peak
11096	37.42	4.21	41.63	54	-12.37	AVG
Remark: Factor = Cable loss + Antenna factor + Attenuator – Preamplifier; Level = Reading + Factor; Margin = Level-Limit.						



HIGH CH159

Horizontal:

Frequency	Meter Reading	Factor	Emission Level	Limits	Margin	Detector Type
(MHz)	(dBμV)	(dB)	(dBμV/m)	(dBμV/m)	(dB)	
3172	62.75	-4.59	58.16	68.2	-10.04	peak
10523	53.16	4.21	57.37	68.2	-10.83	peak
Remark: Factor = Cable loss + Antenna factor + Attenuator – Preamplifier; Level = Reading + Factor; Margin = Level-Limit.						

Vertical:

Frequency	Meter Reading	Factor	Emission Level	Limits	Margin	Detector Type
(MHz)	(dBμV)	(dB)	(dBμV/m)	(dBμV/m)	(dB)	
3172	59.28	-4.59	54.69	68.2	-13.51	peak
10523	50.93	4.21	55.14	68.2	-13.06	peak
Remark: Factor = Cable loss + Antenna factor + Attenuator – Preamplifier; Level = Reading + Factor; Margin = Level-Limit.						

Remark:

- (1) Measuring frequencies from 1 GHz to the 40 GHz.
- (2) "F" denotes fundamental frequency; "H" denotes spurious frequency. "E" denotes band edge frequency.
- (3) * denotes emission frequency which appearing within the Restricted Bands specified in provision of 15.205, then the general radiated emission limits in 15.209 apply.
- (4) The emissions are attenuated more than 20dB below the permissible limits are not record in the report.
- (5) The IF bandwidth of EMI Test Receiver between 30MHz to 1GHz was 120KHz, 1 MHz for measuring above 1 GHz, below 30MHz was 10KHz.
- (6) When the test results of Peak Detected below the limits of Average Detected, the Average Detected is not need completed. For example: Top Channel at Fundamental 73.16dBuV/m(PK Value) <93.98(AV Limit), at harmonic 53.20 dBuV/m(PK Value) <54 dBuV/m(AV Limit), the Average Detected not need to completed.



5.8G 802.11ax80 Mode

All modes of operation were investigated and the worst-case of MIMO are reported.

CH 155

Horizontal:

Frequency (MHz)	Meter Reading (dBμV)	Factor (dB)	Emission Level (dBμV/m)	Limits (dBμV/m)	Margin (dB)	Detector Type
3368	60.14	-4.59	55.55	68.2	-12.65	peak
11096	57.12	4.21	61.33	74	-12.67	peak
11096	37.33	4.21	41.54	54	-12.46	AVG

Remark: Factor = Cable loss + Antenna factor + Attenuator – Preamplifier; Level = Reading + Factor; Margin = Level-Limit.

Vertical:

Frequency (MHz)	Meter Reading (dBμV)	Factor (dB)	Emission Level (dBμV/m)	Limits (dBμV/m)	Margin (dB)	Detector Type
3368	62.87	-4.59	58.28	68.2	-9.92	peak
11096	55.74	4.21	59.95	74	-14.05	peak
11096	39.86	4.21	44.07	54	-9.93	AVG

Remark: Factor = Cable loss + Antenna factor + Attenuator – Preamplifier; Level = Reading + Factor; Margin = Level-Limit.

Remark:

- (1) Measuring frequencies from 1 GHz to the 40 GHz.
- (2) "F" denotes fundamental frequency; "H" denotes spurious frequency. "E" denotes band edge frequency.
- (3) * denotes emission frequency which appearing within the Restricted Bands specified in provision of 15.205, then the general radiated emission limits in 15.209 apply.
- (4) The emissions are attenuated more than 20dB below the permissible limits are not record in the report.
- (5) The IF bandwidth of EMI Test Receiver between 30MHz to 1GHz was 120KHz, 1 MHz for measuring above 1 GHz, below 30MHz was 10KHz.
- (6) When the test results of Peak Detected below the limits of Average Detected, the Average Detected is not need completed. For example: Top Channel at Fundamental 73.16dBuV/m(PK Value) <93.98(AV Limit), at harmonic 53.20 dBuV/m(PK Value) <54 dBuV/m(AV Limit), the Average Detected not need to completed.



4.8 Frequency Stability Measurement

4.8.1 Test Specification

Test Requirement:	FCC Part15 Section 15.407(g)
Test Method:	ANSI C63.10: 2013
Limit:	The frequency tolerance shall be maintained within the band of operation frequency over a temperature variation of 0 degrees to 35 degrees C at normal supply voltage, and for a variation in the primary supply voltage from 85% to 115% of the rated supply voltage at a temperature of 20 degrees C.
Test Setup:	<pre>graph LR; SA[Spectrum Analyzer] --- EUT[EUT]; EUT --- TCh[Temperature Chamber]; TCh --- P[AC/DC Power supply];</pre>
Test Procedure:	The EUT was placed inside the environmental test chamber and powered by nominal AC/DC voltage. b. Turn the EUT on and couple its output to a spectrum analyzer. c. Turn the EUT off and set the chamber to the highest temperature specified. d. Allow sufficient time (approximately 30 min) for the temperature of the chamber to stabilize. e. Repeat step 2 and 3 with the temperature chamber set to the lowest temperature. f. The test chamber was allowed to stabilize at +20 degree C for a minimum of 30 minutes. The supply voltage was then adjusted on the EUT from 85% to 115% and the frequency record.
Test Result:	PASS
Remark:	N/A

**Test Result as follows:**

Mode	Voltage (V)	FHL (5745MHz)	Deviation (KHz)	FHH (5825MHz)	Deviation (KHz)
5.8G Band	40.8V	5744.987	-13	5824.971	-29
	48.0V	5745.014	14	5825.025	25
	55.2V	5745.007	7	5824.987	-13

Mode	Temperature (°C)	FHL (5745MHz)	Deviation (KHz)	FHH (5825MHz)	Deviation (KHz)
5.8G Band	-30	5744.989	-11	5824.984	-16
	-20	5744.981	-19	5824.979	-21
	-10	5744.985	-15	5825.024	24
	0	5745.013	13	5825.015	15
	10	5744.982	-18	5825.023	23
	20	5745.027	27	5824.985	-15
	30	5744.964	-36	5825.014	14
	40	5744.977	-23	5825.007	7
	50	5745.027	27	5825.012	12



4.9 Antenna Requirement

Standard Applicable

For intentional device, according to FCC 47 CFR Section 15.203, an intentional radiator shall be designed to ensure that no antenna other than that furnished by the responsible party shall be used with the device. And according to FCC 47 CFR Section 15.249, if transmitting antennas of directional gain greater than 6dBi are used, the power shall be reduced by the amount in dB that the directional gain of the antenna exceeds 6dBi.

Refer to statement below for compliance.

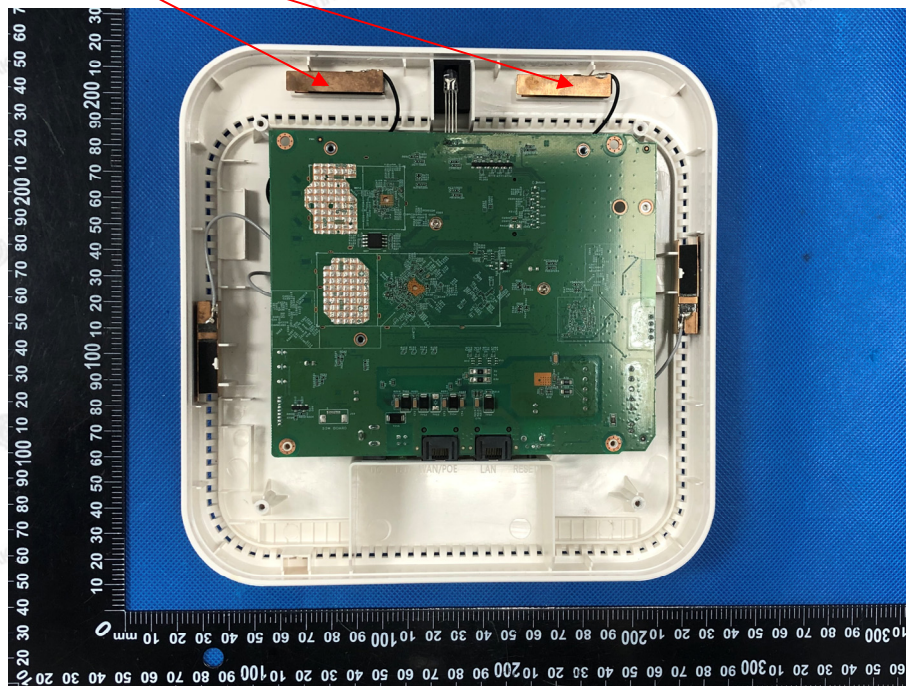
The manufacturer may design the unit so that the user can replace a broken antenna, but the use of a standard antenna jack or electrical connector is prohibited. Further, this requirement does not apply to intentional radiators that must be professionally installed.

Antenna Connected Construction

Antenna Connected Construction

The antenna used in this product is Internal antenna, need professional installation, not easy to remove. It conforms to the standard requirements. and the best case gain of the antenna is Antenna port 1: 3.7dBi, Antenna port 2: 4.0dBi.

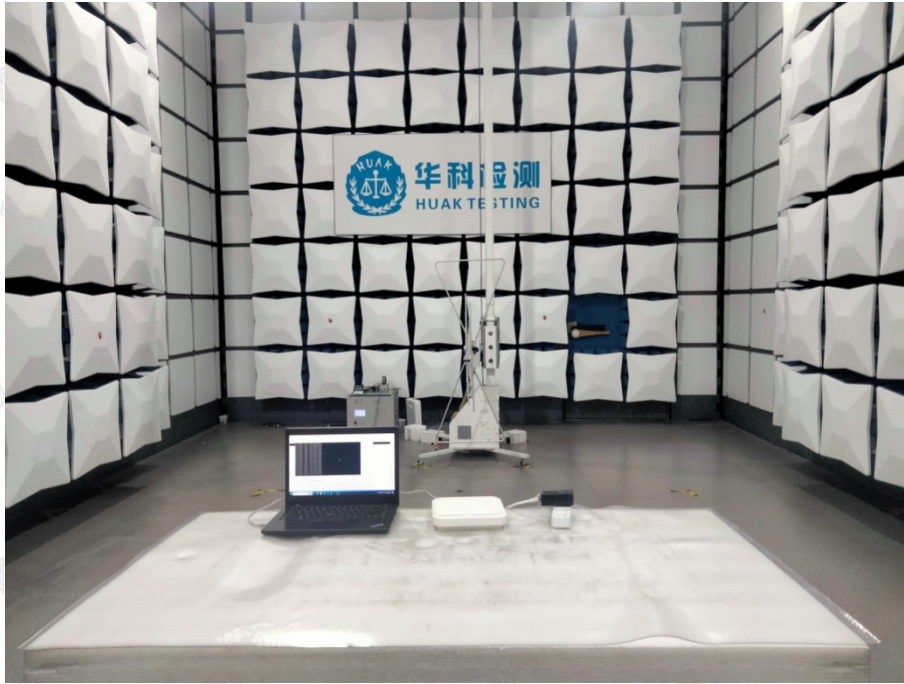
WIFI ANTENNA





5. Photographs of Test Setup

Radiated Emission



The results shown in this test report refer only to the sample(s) tested unless otherwise stated and the sample(s) are retained for 30 days only. The document is issued by HUAKE, this document cannot be reproduced except in full with our prior written permission. The more details and the authenticity of the report will be confirmed at <http://www.cer-mark.com>.

TEL : +86-755 2302 9901 FAX : +86-755 2302 9901 E-mail : service@cer-mark.com

Add: 1-2F., Building B2, Junfeng Zhongcheng Zhizao Innovation Park, Heping Community, Fuhai Street, Bao'an District, Shenzhen, Guangdong, China



Conducted Emission





6. Photos of the EUT

Reference to the report: ANNEX A of external photos and ANNEX B of internal photos

-----End of test report-----

