

# ROBERA

# ROBERA

**22.2 Volt  
GT1**

**Model:** Robera Pro

ROBERA USA

ROBERA GLOBAL

support@roberashop.com

FOLLOW US

<https://www.facebook.com/Roberashop/>



# INSTRUCTIONS

and Important Safety Information

# Thank you for purchasing the GT1 Golf Caddy. To get the most out of your cart please follow these quick steps before use.

1. Your Robera series has a 24 month manufacturer warranty from the date of purchase against faulty material or workmanship which includes the battery and charger.
2. This warranty is void if the charger is damaged due to misuse or overheating from inadequate conditions during charging.
3. IMPORTANT: Register your model online to validate your warranty. Visit [www.roberashop.com](http://www.roberashop.com) to register.

ROBERA USA

ROBERA GLOBAL

[support@roberashop.com](mailto:support@roberashop.com)

FOLLOW US

<https://www.facebook.com/Roberashop/>

## CONTENTS

- |   |           |
|---|-----------|
| <b>1.0 Registration</b>   | <b>03</b> |
| <b>2.0 What's included</b>  | <b>04</b> |
| 2. The battery is designed for indoor charging only.<br>Please ensure it is used on an uncarpeted, non-flammable hard floor in a well ventilated area.  |           |
| 3. Never attempt to charge a damaged battery, frozen battery or non-rechargeable battery.   |           |
| 4. Do <b>NOT</b> attempt to use the charger if it has been dropped or damaged.  |           |
| 5. Do <b>NOT</b> smoke, use an open flame or create sparks near your battery and charger during charging.   |           |
| 6. Do <b>NOT</b> operate the charger if the cord or plug is damaged.  |           |
| 7. Do <b>NOT</b> attempt to open or repair the battery or charger casing as it will void the warranty.  |           |
| 8. Do <b>NOT</b> subject the battery to excessive shock or vibration.   |           |
| 9. Do <b>NOT</b> mix with different types or brands of batteries.   |           |
| 10. Your lithium battery leads, casing and connections should be regularly inspected for damage and wear.   |           |
| 11. Under no circumstances should a Lithium Battery that has been dropped, damaged or immersed in water be connected to a Robera or charger. By doing so you may create a fire hazard or risk the battery catching fire. Please safely dispose of your battery immediately. |           |

# 1.0 REGISTRATION

1.It is most important you register your ROBREA Pro online immediately as registration:

- Records your ROBREA for warranty purposes
- Speeds up any servicing required on your ROBREA
- Assist us to contact you with any updates to your ROBREA

2.To register your ROBREA Pro, visit [www.robera.com](http://www.robera.com)

3. You will need to record your ROBREA serial number. This is found on the ROBREA battery base or in the top box compartment.

4. Please keep this user manual on file for your own reference and a copy of your serial number;

# My ROBERA Serial Number is

(example GA24B0020)

**Purchased Date**

A diagram showing a sequence of four rectangles. The first three are dark gray, and the fourth is light gray. They are separated by slashes.

You may be required to show proof of purchase so we recommend you keep your receipt with this manual.

## 2.0 WHAT'S INCLUDED

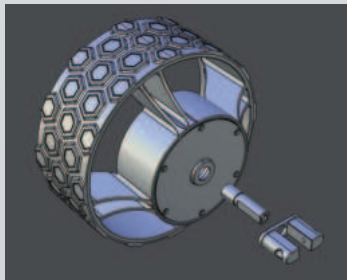
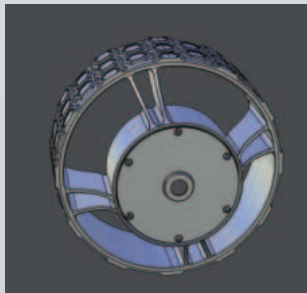
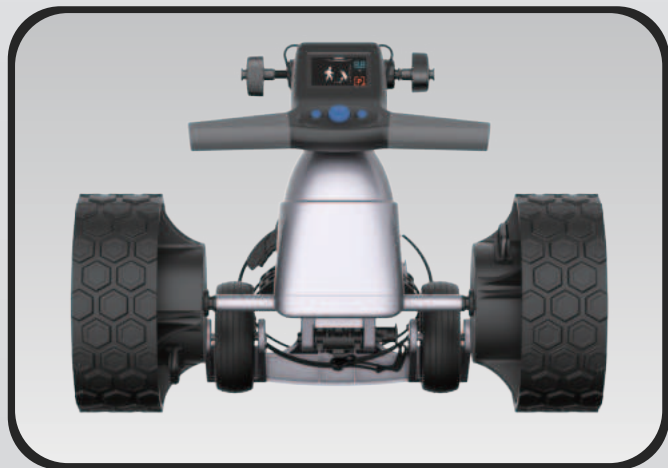
- Bottom module
- Rear wheel module
- Remote control module
- Multifunctional cup holder
- Hand-twisted screw
- British screw
- Mobile phone holder
- Mobile phone clip
- Round head screw
- Clip
- Umbrella stand
- Shuffleboard module
- Expansion port cover
- Phillips tool 5x100
- Scorecard
- Scorebook
- Instruction manual
- Drying bag



# 3.0 ASSEMBLING THE ROBERA SERIES

## 3.1 Assembling & Unfolding

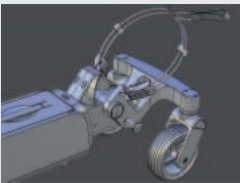
1. First install two large wheels. Insert half of the wheel first.
2. After pulling up the buckle, insert it all the way.
3. Slide the buckle to unfold the auxiliary wheels.
4. Unlock the buckle of the strap. Slide the buckle at the front end to open the folding hook.
5. Directly unfold the upper part for self-locking.
6. Pull up the bolt and unfold the front wheel.



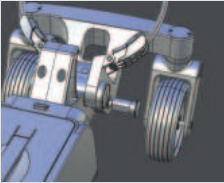
## 3.2 Folding

1. Pull up the bolt and fold the front wheel. After folding in place, the bolt will automatically spring into the bolt hole.
2. Hold the upper column part and pull up the bolt. The upper and lower columns can be folded.
3. Fasten the bag holder to the hook on the front wheel seat and fasten the strap buckle. The cart can be carried with one hand.
4. If a smaller storage space is needed, the rear wheel can be removed and the auxiliary wheels can be folded. Refer to the installation of the rear wheel mentioned earlier.

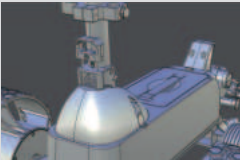
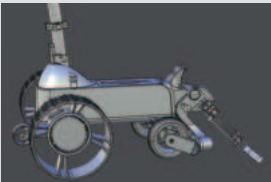




Pull up the bolt and fold the front wheel.



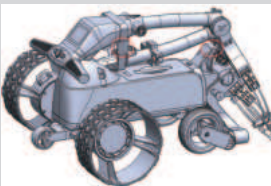
After folding in place, the bolt will automatically spring into the bolt hole.



Hold the upper column part and pull up the bolt.

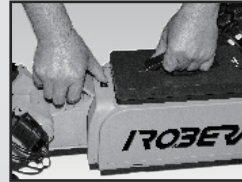


The upper and lower columns can be folded.



### 3.3 Fourth Foldable Rear Wheel

1.The ROBERA comes standard with a fourth foldable rear wheel. This wheel **MUST** be unfolded into position at all times when the ROBERA is in use. This will reduce damage to ROBERA, and provide ultimate stability across all terrains. This fourth wheel should be cleaned regularly with a cloth to ensure it can be folded as required for storage.



### 3.4 Fitting the Golf Bag

- 1.Ensure that the top bag support straps are disconnected.
- 2.Position the golf bag on the ROBERA.
- 3.Secure the top bag support strap.
  - Select a good position for the elasticised straps to be put around the golf bag
  - Stretch the longer end of the strap and loop the rounded plastic bar underneath the hook on the shorter end
  - The top bag support straps should now be connected.
- 4.Please ensure the top bag support straps are hooked in place securely before releasing. Failure to do so could result in injury to the user.
  - The rounded plastic bar on the longer strap can be adjusted to ensure the bag is secured properly in place.
  - Secure the lower bag strap
  - Pull the lower bag strap over the base of the golf bag

## 4.0 BATTERY CHARGING & CONNECTION

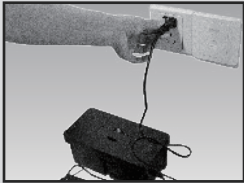
- 1.The ROBERA is designed to take  
– ROBERA 22.2V/18Ah (400Wh) Lithium battery (Standard)

### 4.1 Initial Charge

- 1.Before using your ROBERA for the first time or after each use, you must fully charge the battery.
- 2.Fluctuate the Buckled Lock and lift the handle to take out the lithium battery package.
- 3.Plug the charger's AC connector into an outlet, making sure it's properly inserted.



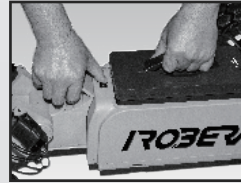
- 4.Plug the charger's DC connector into the charging port of the battery and ensure that the plug is in position.



- 5.Plug the charger output connection into the connector on the front of the battery – the Red LED illuminates to indicate charging.
- 6.When the charging LED indicator has turned green, the battery is fully charged and ready to be used.

### 4.2 Connecting the Battery onto the Robera series

- 1.Position the battery on the Robera series and fluctuate the Buckled Lock then push the battery down to secure it.



2. Please refer to the battery charger user manual for further information.

## 5.0 OPERATING INSTRUCTIONS



### 5.1 Powering On

- 1.Press and Hold the Middle POWER Button for 2 Second
  - To start the golf cart, simply press and hold the middle POWER button for 2 second.
  - Once the cart is started, it will automatically enter standby mode, awaiting further user actions.
- 2.Speed Control Mode Available Immediately After Powering On
  - After successfully powering on, the golf cart can directly enter speed control (cruise control) mode, allowing you to set and adjust the speed freely.
  - Please ensure the surrounding area is safe and free of obstacles during the startup and operation of the cart.

### 3.Wait for the AI Component to Load Before Activating Follow Mode

- After powering on, the golf cart will take approximately 40 seconds to load the AI component. During this time, features such as auto-following, marching, and voice broadcasting will be temporarily unavailable.
- You will see the Robera icon flashing on the LCD screen during loading. Once the loading is complete and the icon stops flashing, the AI component will be ready, and the follow function can be used normally.

## 5.2 Powering Off

- 1.Turn off the golf cart, press and hold the middle POWER button for more than 2 seconds.
- 2.When you need to shut down the cart, holding the POWER button for over 2 seconds will turn it off.
- 3.After powering off, ensure that the golf cart has completely stopped in order to avoid accidental restarts.

## 5.3 Emergency Stop/Parking Mode

- 1.If you need to activate emergency stop or parking mode, briefly press the middle POWER button.
- 2.If you need to activate emergency stop or parking mode, briefly press the middle POWER button.
- 3.In parking mode, the cart will come to a complete stop to ensure the safety of both the device and those nearby.
- 4.To resume normal operation, simply restart or operate the device as needed.

## 5.41 Remote

1. Before using the remote control, unlock it by pressing and holding it for 1 second. The remote will vibrate for 0.5 seconds, indicating that it has been successfully unlocked.
2. A red light will indicate that the system is in a locked state. When the remote is locked, pressing any button will not produce a response.
3. When the remote is unlocked, pressing any button will activate a green light, allowing you to use the remote control.
4. After 5 minutes of inactivity, the remote will automatically lock and enter low-power mode.

## 5.42 Forward Key

1. Press the forward key once, and the Robera will move forward at a fixed speed.
- 2.If you hold down the forward key, the speed will gradually increase.
- 3.When you release the forward button, the cart will keep moving at its current speed.

## 5.43 Backard Key

- 1.Press once to reduce the current speed by a fixed amount.
- 2.If the cart is moving forward, holding the backw ard key for over 0.5 seconds will bring the speed to zero.
- 3.When at a speed of zero, holding the key will engage reverse mode, which moves the cart at a fixed speed until the key is released.

## 5.44 Left and Right Keys

Direction Control: Press the left and right keys to control the golf cart's left and right turns.

1. Follow Key:To activate Follow Mode,press and hold the follow key for 1 second to activate the follow function. The golf cart will follow the first recognized person in front of it.
- 2.Marching Mode:Press and hold for 1 second to start marching. The golf cart will lock onto the target directly in front of the camera.
- 3.Stop Key:Press the stop key to immediately halt the golf cart's movement

## 5.45 Light Indicator

- 1.A green light indicates that Robera is in normal working condition.
- 2.A red light indicates that Robera is in a locked state and needs to be unlocked before operation.
- 3.Low Battery Indicator: When the remote control battery is low and any button is pressed, a red light will flash, signaling that it needs to be charged.
- 4.To charge the battery, simply pull the battery unlock clip and lift the battery out for charging.
- 5.Charging Indicator:While the remote control is charging, a red light will flash, indicating that it is in the charging process.



6.Full Charge Indicator: When connected to the charger and the battery is fully charged, a steady green light will indicate that charging is complete.

### 5.46 Remote Control Replacement

The factory-default remote control is pre-paired, so no user pairing is necessary. The following steps are only required if you are purchasing a new remote control.

#### 1. Pairing the Remote Control & Entering Pairing Mode.

- For the Remote Control: Press and hold the unlock button and the STOP button for 3 seconds. The remote will vibrate for 0.5 seconds, and a blue light will flash, indicating that it has entered pairing mode. If pairing is not completed within 30 seconds, the remote will automatically exit pairing mode. You can also exit pairing mode immediately by pressing any button.

- For Robera: Within 3 seconds of powering on Robera, simultaneously press and hold the left and right buttons on the panel for 1 second. Robera will enter pairing mode, and the remote control icon on the LCD screen will flash, indicating that it is ready to pair.

#### 2. Pairing Status Indicators.

- If pairing is successful, the remote will display a green light for 1 second, notifying the user that the pairing is complete. Meanwhile, the remote control icon on the golf cart's screen will remain lit.

- If pairing fails, the remote will display a red light for 1 second. If pairing is not completed within 1 minute, the golf cart will automatically exit pairing mode.

#### 3.Remote Following Calibration.

Calibration is necessary between the remote and the Robera golf cart. After each pairing of the remote control, a Remote following calibration must be performed. Please follow these steps to carry out the Remote following calibration.

- Distance Requirement: Keep the remote 1 meter in front of Robera. from the Robera, ensuring there are no obstructions between them.



- Start Calibration: Press and hold the lock and unlock buttons at the same time for 3 seconds. When the white light turns on, calibration has started.
- Completion: Wait for about 30 seconds. The white light will turn off, indicating that the calibration was successful.

## 6.0 FUNCTION & OPERTAION

### 6.1 Speed Control Mode

Operating Instructions:

1. Activation: Rotate the Multi-function Key counterclockwise to any position to switch to Assist Mode. In this mode, pushing the cart is effortless and convenient.
- 2.In non-powered mode, rotate clockwise to increase speed, and counterclockwise to decrease speed.
- 3.Stop Running: Press the knob button to stop immediately.a
4. Special Usage Scenario Note: Be cautious when operating on sloped roads as the vehicle may roll automatically due to gravity.

### 6.2 Follow Mode

Operating Instructions.

- 1.Activate Follow Mode:Press the Follow Key/Motion Key on the golf cart or remote control. When a person is within 0.5 meters in front of the camera, it will automatically lock on and start following/motion sensing.
- 2.Gesture Activation (in case of recognition failure):If the camera fails to recognize a person, you can open your palm with fingers pointing downwards, make a gesture towards the camera to activate follow mode.
- 3.Stop Following:You can stop Robera by placing your palm in front of the camera. Additionally, if you move within 30 cm of the cart, it will automatically cease following you.



### 6.3 Marching Mode

#### Operating Instructions.

- 1.Activate Follow Mode:Press the Follow Key/Marching Key on the golf cart or emote control. When a person is within 0.5 meters in front of the camera, it will automatically lock on and start following/Marching.
- 2.Gesture Activation (in case of recognition failure): If the camera fails to recognize a person, you can open your palm with fingers pointing downwards, make a gesture owards the camera to activate follow mode.After successful mode activation, you can adjust the golf bag cart's movement trajectory by moving your body.
- 3.Stop Following:You can stop Robera by placing your palm in front of the camera. Additionally, if you move within 30 cm of the cart, it will automatically cease following you.
- 4.Exit Mode:Press any button on the golf cart or the stop button on the remote control to exit the mode.
- 5.Special Usage Scenario Note: Tracking players within a range of 1.5 to 5 meters. The maximum follow distance without obstructions for Robera Pro is 15 meters, while Robera Normal has a maximum distance of 5 meters. If the distance exceeds these limits, it will lose signal and stop following.

### 6.4 Parking Mode

#### 6.4.1 Activation.

- 1.Button Trigger:Pressing the multi-function button in any mode activates Parking Mode.
- 2.Status Indication:In Parking Mode, the P indicator light will remain illuminated, indicating that the vehicle is in a parked state.
- 3.Remote Control Operation:In Parking Mode, the golf cart can be operated using the remote control.

### 6.5 Emergency Stop Mode

#### 6.5.1 Activation.

- 1.Button Trigger:Press any key during automatic operation to stop immediately.
- 2.Abnormal Fall Detection:Automatically halts in case of abnormal falls.
- 3.Status Indication:In Emergency Stop Mode, the P indicator light flashes, indicating the vehicle is in an emergency stop state.

#### 6.5.2 Deactivation.

- 1.Deactivation Method:Press the multi-function button to deactivate and switch to Parking Mode.
- 2.Safety Lockout:Mode switching is disabled during an emergency stop to ensure safety.
- 3.Remote Control disablement:Remote control is disabled during an emergency stop to prevent external interference.

### 6.6 Hand Gesture Trigger Mechanism 需要配图

- 1.Hand Gesture Type: Face your palm towards the camera with your fingers slightly spread apart, holding this position for at least 0.5 seconds to initiate or stop the gesture operation.
- 2.Recognition Distance: The effective distance for gesture recognition ranges from 0.2 meters to 2 meters. Actual recognition distance may vary based on environmental factors.
- 3.Valid Hand Gesture Area: Gestures should be performed in front of your body. Please avoid making gestures to the side or behind you to prevent accidental triggers.
- 4.Hand Gesture Recognition Flexibility
  - Fingers can be either spread apart or not; this will not affect the recognition of the gesture.
  - If a gesture is not recognized during execution, it is advisable to move your hand slightly away and then repeat the gesture.

## 6.7 Notes

- 1.Charging:The Robera golf cart can charge devices that require 5V power, such as smartphones, tablets, and smartwatches, via TYPE-C and USB ports. To ensure safety, the output power for each port is limited to 4W. When connecting, make sure that the USB or TYPE-C charger meets standards, and that the battery and charging ports are undamaged. Once connected, Robera will automatically supply power or charge the device without any additional action needed. You can check the charging status through the external device's charging indicator or screen.
- 2.Remote Control:If the remote control is not used for an extended period, please charge it every 3 months to maintain battery life and performance. Charging times may vary depending on the battery level and power source, so be sure to monitor the indicator light while charging.
- 3.Moving Uphill and Downhill:Always stay within the camera's range. When in follow mode, be sure to pause your steps appropriately while going uphill to remain in view. It is not recommended to use follow mode on steep slopes, as this could cause the cart to tip over. Instead, use push mode for added safety.
- 4.Sun Glare:When walking in direct sunlight, the cart may be affected by glare. In such cases, the cart will stop. To prevent this, it is advisable to avoid direct sunlight on the camera lens.
- 5.Open Spaces:The ROBERA caddy is designed for use in open spaces. Avoid operating it in enclosed areas. Radio frequency signals, Wi-Fi, or similar electronic signals may interfere and cause the ROBERA caddy to function improperly or become unstable. Avoid blocking the camera with your hands or other objects.
- 6.Parking Lots :In parking lots, please use push mode. Cars or other obstacles may cause signal reflection and interfere with communication.
- 7.Obstacles:Be aware of surrounding obstacles and how they may affect ultrasonic signals. Move slowly near obstacles (including pools, sand traps, and other barriers) and exercise caution

- 8.Signal Interference:If you experience signal interference in remote control mode in these areas, please switch to push mode or follow mode.
  - High-voltage cables.
  - Base stations.
  - Areas near airports or military bases.
  - Wi-Fi or similar electronic signals.
- 9.Humid Environments:Do not use Robera in humid conditions. If it rains, please turn off the Robera and move it to a dry,safe place.

## 6.8 Other Reminders

- 1.Regularly clean the camera with a dry, soft cloth.
- 2.Reduce speed while turning: The camera may struggle to locate the user during turns, which could affect the cart's direction. Pay special attention to the terrain.
- 3.In narrow passages (like bridges or hallways), control your speed and ensure that other people do not enter the follow zone to prevent the cart from entering dangerous areas.
- 4.Do not exceed the weight limit: The maximum load for the cart is approximately 15 kilograms. Overloading can reduce the vehicle's lifespan and may cause malfunctions.
- 5.If you are not familiar with the operation, it's advisable to keep the remote control nearby, as you can use it to stop the cart in case of an emergency.
- 6.In auto mode, please avoid hanging heavy items near the handle to prevent the Robera from becoming unbalanced and tipping over.

# 7.0 WARRANTY

## 7.1 Warranty Policy

- 1.The Robera series are covered by a limited 2 year manufacturer'swarranty from the date of purchase. Duration of this warranty is:

- Golf Cart Body, Battery, and Charger: 2-year warranty.
- Accessories: 1-year warranty.
- Refurbished Caddy: 1-year warranty.

2. Robera or an authorised service centre will repair or replace any parts found to be defective in materials or workmanship under normal use provided that:

- The Robera has been properly used, maintained and regularly serviced. (see section 10.5)
- The replacement or repair is performed by an authorised Robera service centre or the owner with Robera approval.
- The Robera has been registered online.

## **7.2 Warrant Exclusions**

1. The following events will void the warranty:

- Any alteration performed by non-authorized people or companies.
- Fitting of parts or accessories not recommended by Robera.
- Any damage caused by continued operation of the product after it is known to be defective.
- Damage to the seat and/or seat support bracket on the unit.
- Damage caused by partial or complete ingress of water into the motor/gearbox and other major components.
- Damage caused by the unit being driven into bunkers, other course hazards, or clubhouse and carpark hazards.
- Damage caused by golf balls or golf clubs.
- Application of external force to any part of the unit or battery.
- Fusion of motor or electronics through overload or continual stationary operation.
- All implied warranties [save those preserved by statute] are excluded. Liability for consequential damages under any and all warranties is excluded to the extent exclusion is permitted by law.

2. The following events are not covered under warranty:

- Normal wear and tear (e.g., tires, rubber handlebar, elastic straps, paintwork, battery performance, axle threads, charging ports on batteries and remotes, screen glass, etc.).
- Minor appearance defects that do not affect the operation of the unit and are considered by the manufacturer to be within accepted standards.

## **7.3 Parts installed During Warranty**

1. Warranty coverage for components installed during a unit's warranty period will last for the duration of the model's warranty period, provided the warranty installation is performed by Robera, an authorized service center, or the owner with approval.

# **8.0 MAINTENANCE**

## **8.1 CLEANING YOUR ROBERA GOLF CADDY (SEE MAINTENANCE SCHEDULE)**

1. For years of good operation, your Robera golf caddy requires care and attention.
2. Keep your Robera golf caddy clean by using a cloth with warm water and mild detergent..
3. Do not hose down your Robera golf caddy under any circumstance, as the Robera golf caddy has electronic components.
4. Ensure that the seat stem bracket is free from sand.
5. Do not submerge your Robera golf caddy in water as it will cause irreparable damage.
6. Clean the Robera battery base when the battery is removed from the Robera golf caddy.

## **8.2 Service and Repair Centres**

1. For all servicing, please do not go back to your place of purchase.
2. To find your nearest Service centre visit [www.roberashop.com](http://www.roberashop.com)
3. For warranty repairs to be authorised, you MUST provide proof of purchase. Please keep this with you as well as your Serial number. You can record in this manual. It is most important you register your Robera golf caddy online for warranty purposes.

### **8.3 Purchasing Parts and Accessories**

1.You are welcome to service your Robera series out of warranty by purchasing parts directly from Robera. Please call or email [support@roberashop.com](mailto:support@roberashop.com) to discuss the appropriate parts and instructions.

2.How to Contact Robera

- Email: [support@roberashop.com](mailto:support@roberashop.com)
- Follow Us: Facebook
- You can also purchase accessories and replacements at [www.roberashop.com](http://www.roberashop.com).

“This device complies with Industry Canada’s license-exempt RSSs. Operation is subject to the following two conditions:

- (1) This device may not cause interference; and
- (2) This device must accept any interference, including interference that may cause undesired operation of the device.”

« Le présent appareil est conforme aux CNR d'Industrie Canada applicables aux appareils radio exempts de licence.

L'exploitation est autorisée aux deux conditions suivantes : (1) l'appareil ne doit pas produire de brouillage, et

(2) l'utilisateur de l'appareil doit accepter tout brouillage radioélectrique subi, même si le brouillage est susceptible d'en compromettre le fonctionnement. »

The product should be kept at least 20CM away when used.

Le produit doit être conservé au moins 20CM une fois utilisé.

**Remote Control:** The device has been evaluated to meet general RF exposure requirement. The device can be used in portable exposure condition without restriction.

L’ appareil a été évalué pour répondre aux exigences générales en matière d’exposition aux RF. L’ appareil peut être utilisé en condition d’exposition portable sans restriction.

The smart electric golf cart does not need to be operated by hand during use

## FCC Warning

This device complies with Part 15 of the FCC Rules. Operation is subject to the following two conditions:

(1) This device may not cause harmful interference, and (2) this device must accept any interference received, including interference that may cause undesired operation.

NOTE 1: This equipment has been tested and found to comply with the limits for a Class B digital device, pursuant to part 15 of the FCC Rules. These limits are designed to provide reasonable protection against harmful interference in a residential installation. This equipment generates, uses and can radiate radio frequency energy and, if not installed and used in accordance with the instructions, may cause harmful interference to radio communications. However, there is no guarantee that interference will not occur in a particular installation. If this equipment does cause harmful interference to radio or television reception, which can be determined by turning the equipment off and on, the user is encouraged to try to correct the interference by one or more of the following measures:

- Reorient or relocate the receiving antenna.
- Increase the separation between the equipment and receiver.
- Connect the equipment into an outlet on a circuit different from that to which the receiver is connected.
- Consult the dealer or an experienced radio/TV technician for help.

NOTE 2: Any changes or modifications to this unit not expressly approved by the party responsible for compliance could void the user's authority to operate the equipment.

## RF Exposure Statement

To maintain compliance with FCC'S RF Exposure guidelines, This equipment should be installed and operated with minimum distance of 20cm between the radiator and your body. This device and its antenna(s) must not be co-located or operation in conjunction with any other antenna or transmitter.

*Remote Control: The device has been evaluated to meet general RF exposure requirement. The device can be used in portable exposure condition without restriction.*

*The smart electric golf cart does not need to be operated by hand during use*