

Photo 23

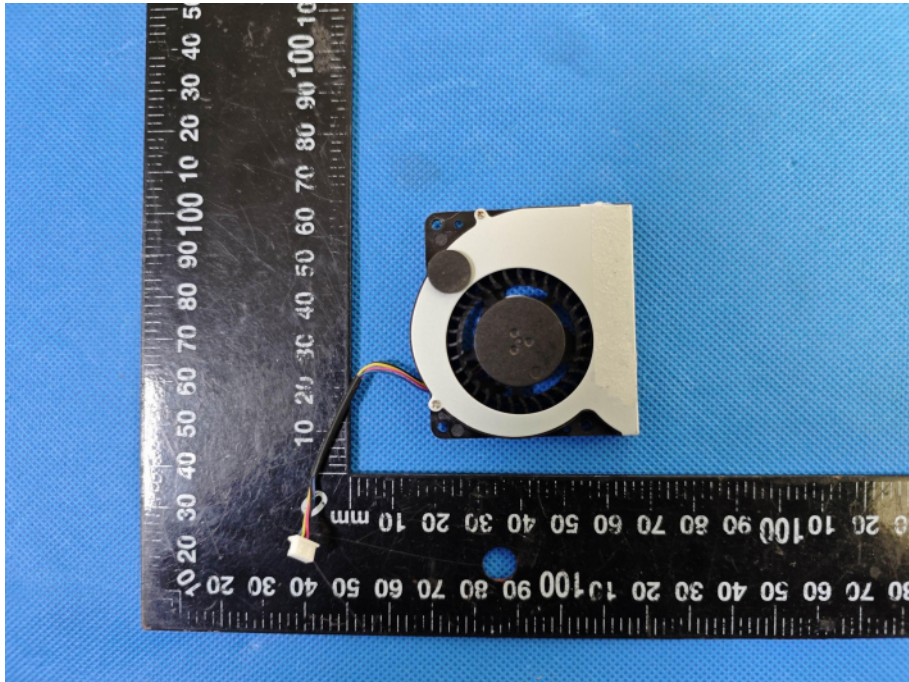


Photo 24



Photo 25

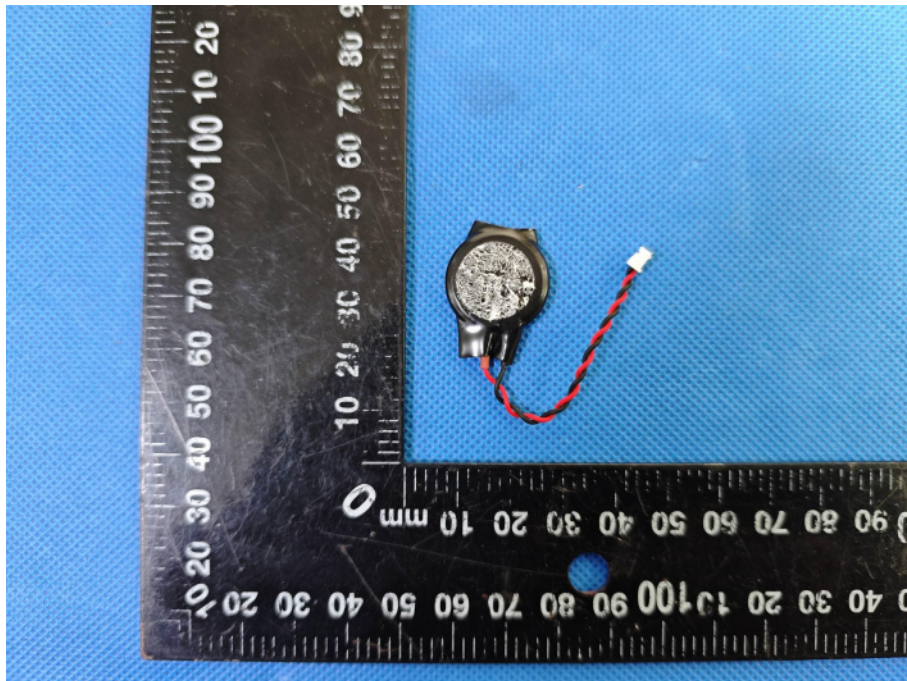
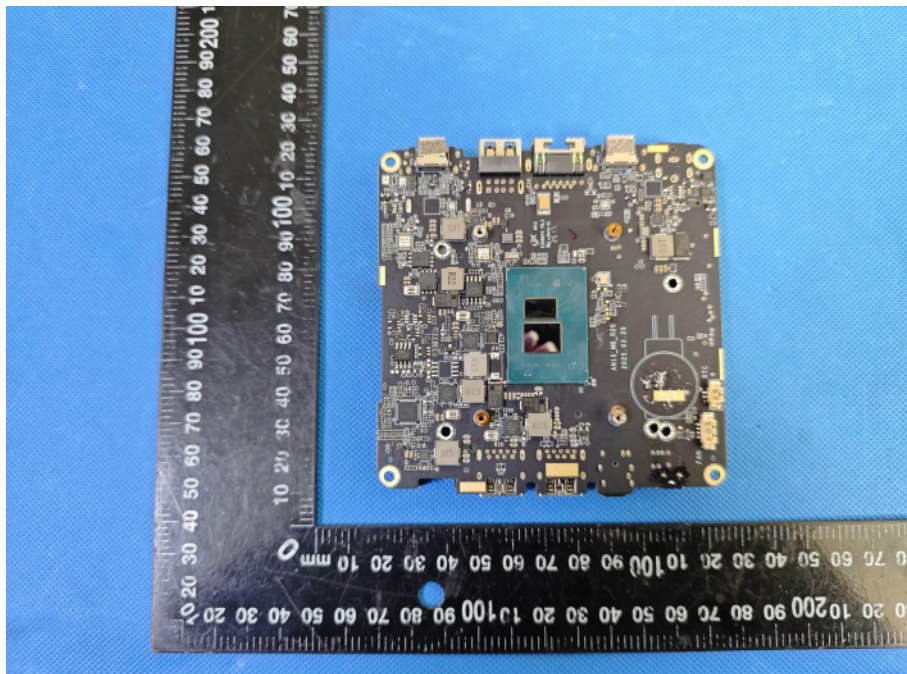


Photo 26





[illegible]

This image shows the reverse side of a Raspberry Pi 4B. The central component is the Broadcom BCM2711 SoC, which is a quad-core ARM Cortex-A72 processor. Surrounding the SoC are various support chips, including the BCM28355 VideoCore VI, the BCM28355 AudioCore, and the BCM28355 USB 3.0. The board also features a 4GB LPDDR4-3200 RAM chip, a 16MB eMMC storage chip, and a 16MB SPI flash chip. The board is populated with numerous passive components, including resistors, capacitors, and inductors. The board is shown against a blue background.



Photo 29

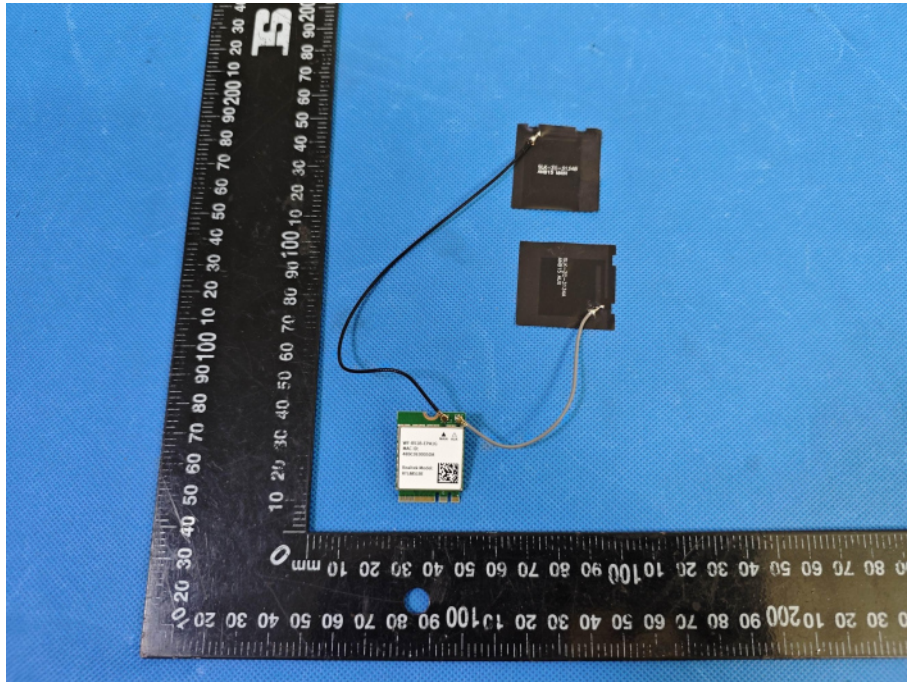


Photo 30

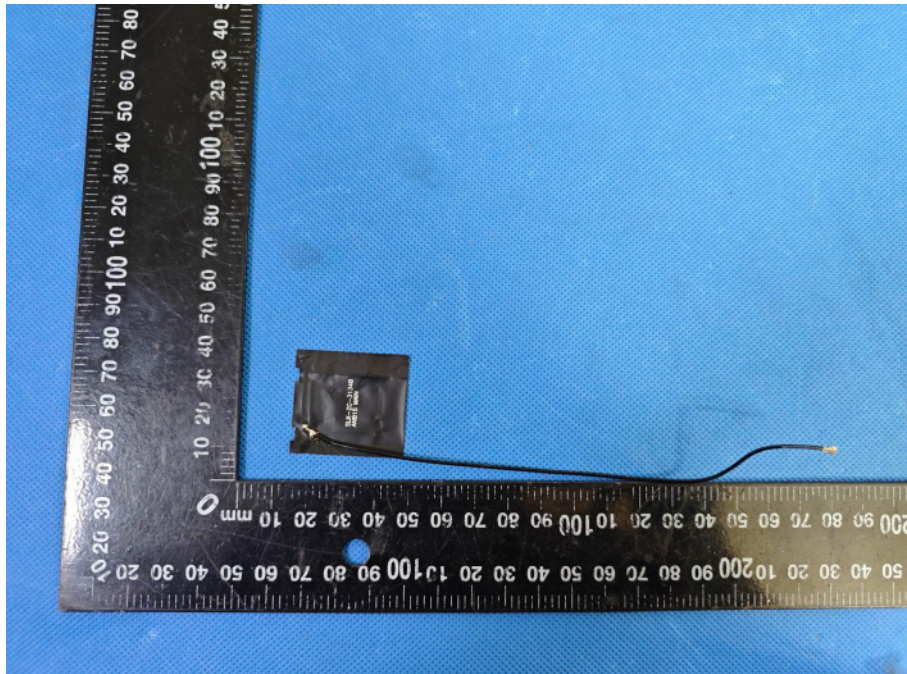


Photo 31



Photo 32

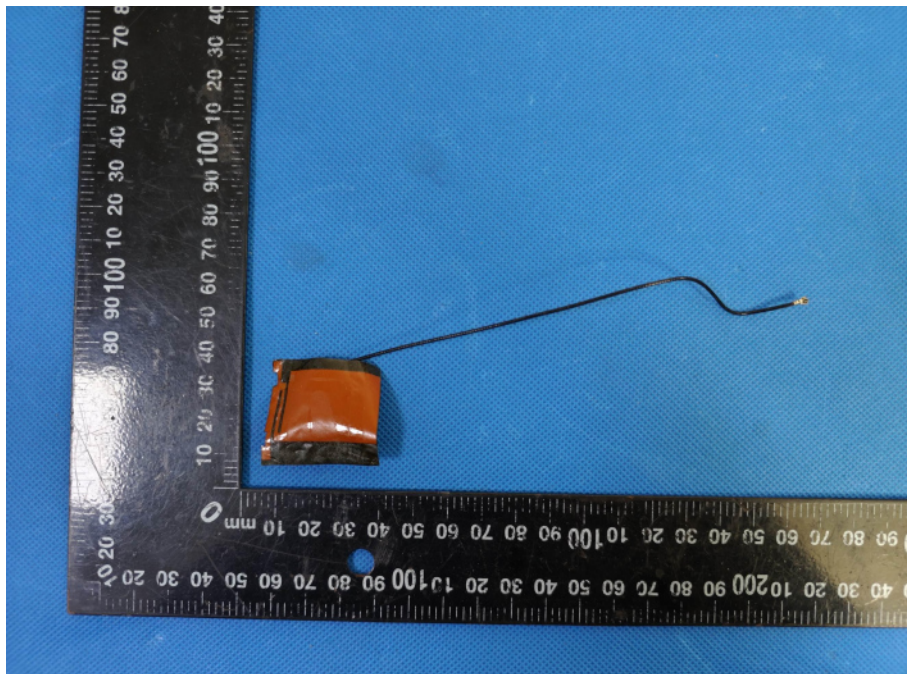




Photo 33

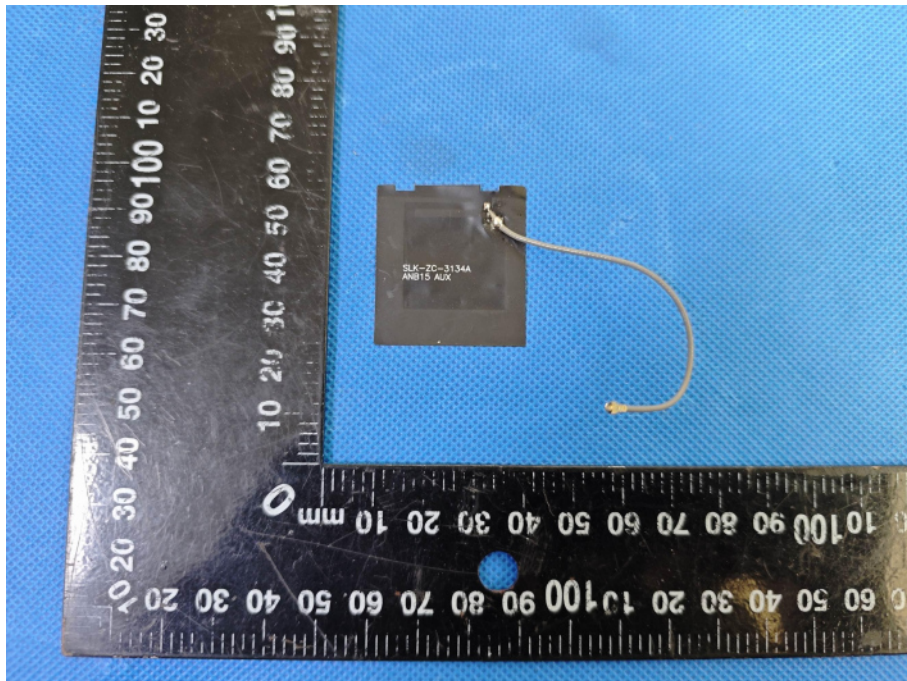


Photo 34

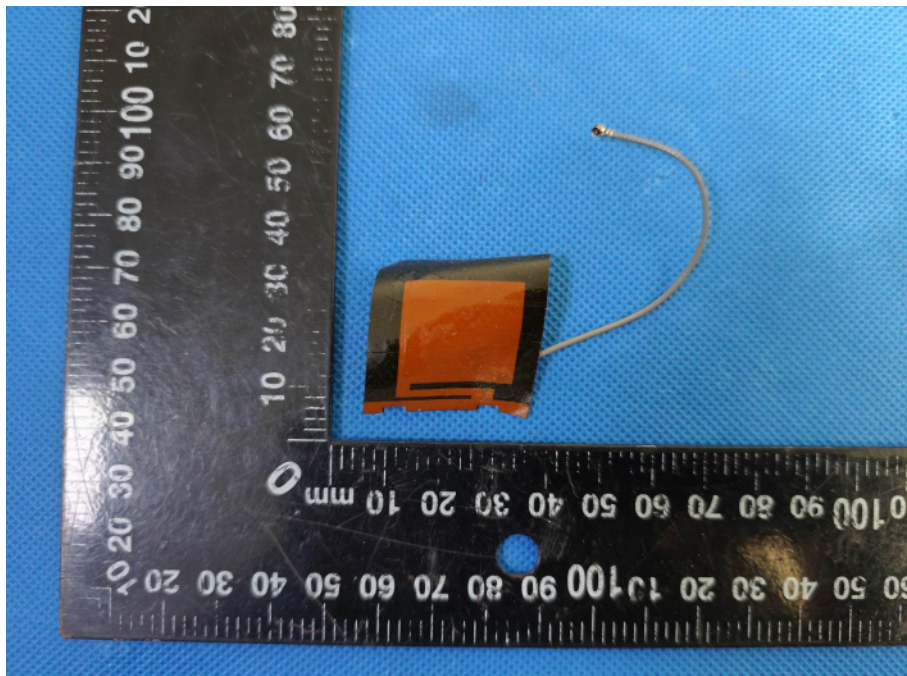


Photo 35

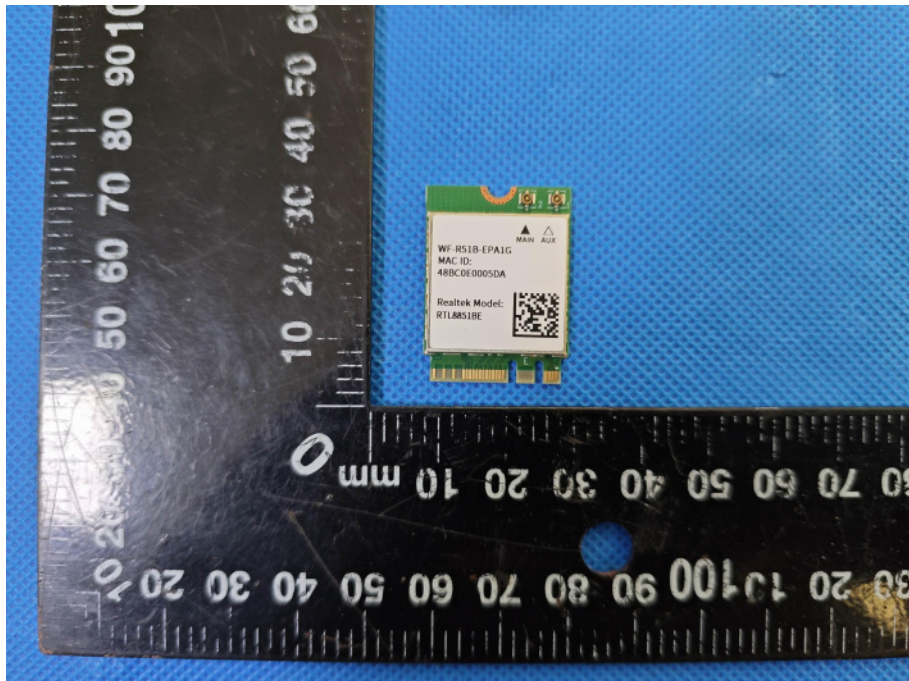


Photo 36





Photo 37



Photo 38

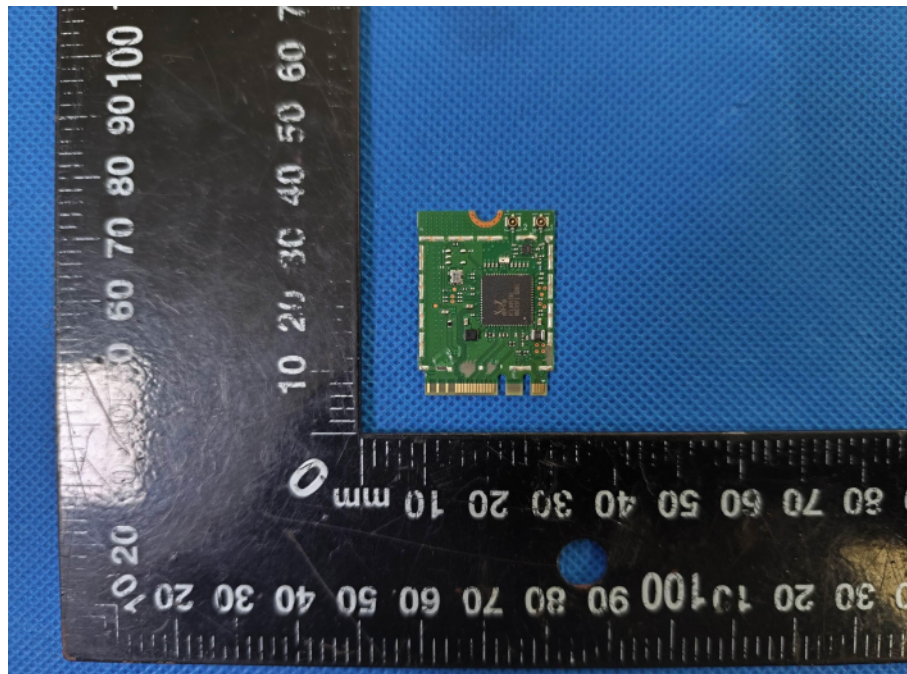




Photo 39

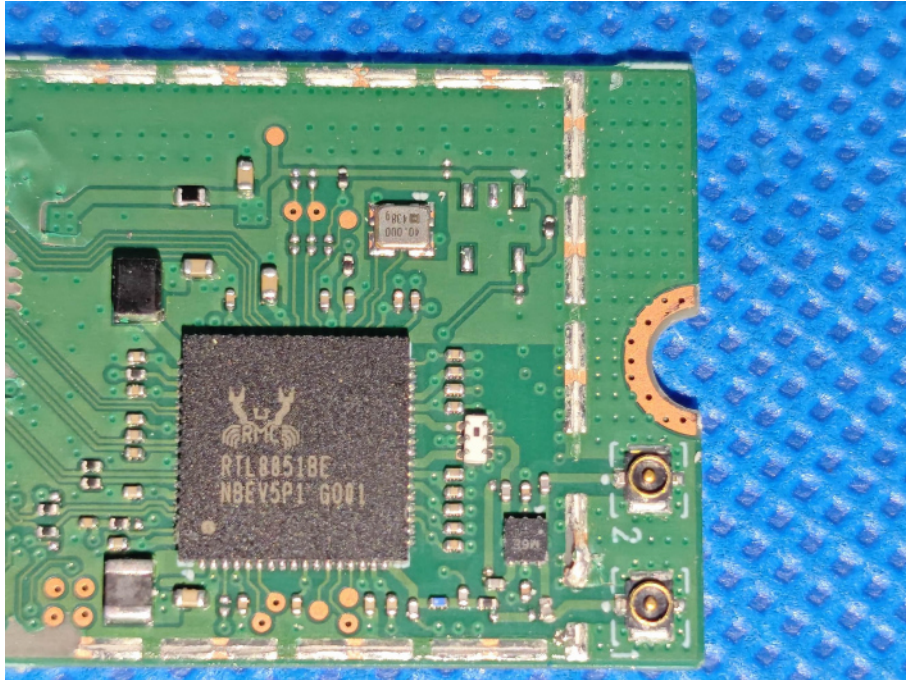


Photo 40

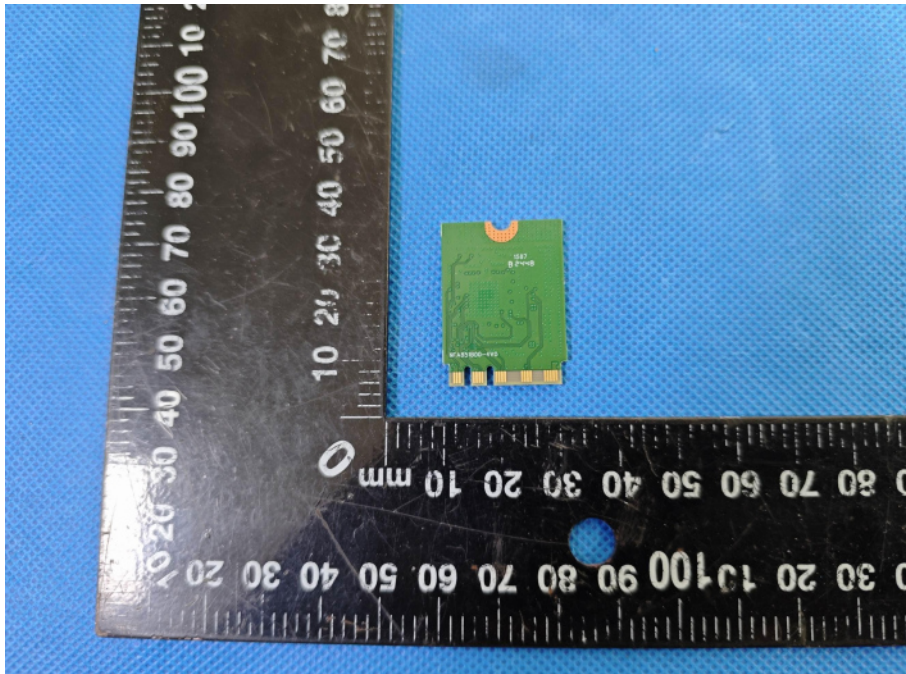


Photo 41

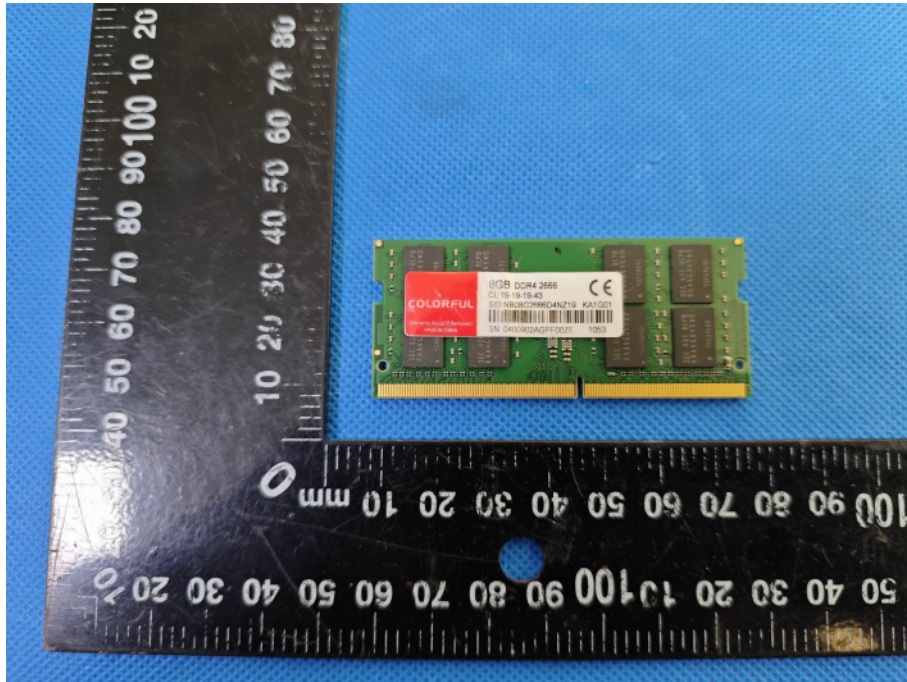


Photo 42

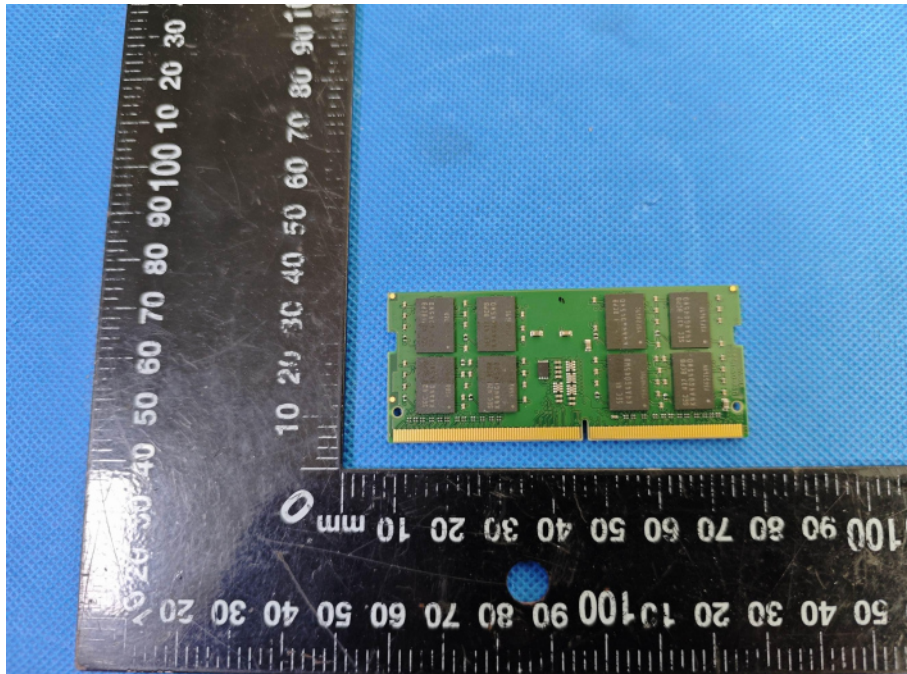
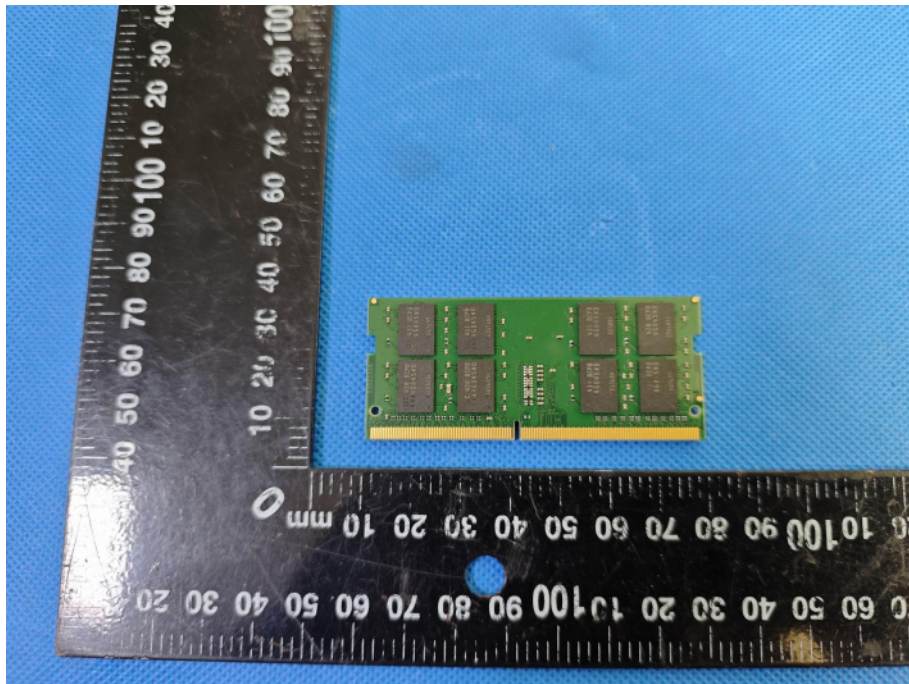




Photo 43



-----End-----