

Page turning gripper manual

Product schematic diagram

Model: RYT-WLQ-S03

Executive standards: Q/HQXJ 001-2017

Material: ABS

Power on

Power on: Hold the product and press it to power on. The number of displays will be displayed, and the left indicator light will flash. Wait for "Bluetooth" connection

Shutdown: After the product is left to stand for 180 seconds, it will automatically shut down and reset to zero

Bluetooth connection

Turn on the gripper, the small dot on the left side of the display screen will flash.



Turn on the gripper, the small dot on the left side of the display screen will flash. Open the Bluetooth settings of the phone, find "RRVM0WLL061" to pair, and the phone will display a successful

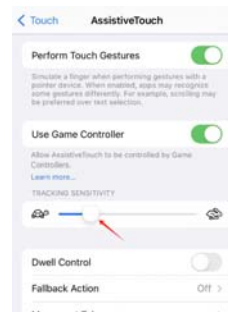
Apple IOS settings

Siri Open: You can say, "Turn on auxiliary touch."

Manual opening: Go to "Settings - Accessibility - Touch - Assistive Touch" and turn on the phone's auxiliary touch function



By adjusting the sliding accuracy through tracking sensitivity, it is recommended to set the sensitivity to below 1/3 of the position



Usage

When Bluetooth is not connected: Press once and count 1

When connecting Bluetooth: Press once to count 1, and at the same time, the phone simulates sliding down and left once; Quickly press twice and count twice (no counting for more than two times), while simulating sliding up and right once on the phone; Long press without counting, while simulating long press on the phone

Power on

Connect the TYPE-C charging cable for charging, and the middle three indicator lights will light up one by one. If all three indicator lights in the middle light up, it means it is fully charged

Daily maintenance and precautions

Avoid throwing the gripper vigorously onto the ground

Do not disassemble, modify, or repair without permission, otherwise it will not be returned.

Do not allow water or other liquids to enter the interior of this product, causing damage to the product

Containing small parts, there is a risk of suffocation if bitten or swallowed, Prohibit use by children under 3 years old

Within one year from the date of purchase, any problems caused by defects in the materials or design process of this product will be repaired, exchanged, or replaced with necessary components free of charge by our company

Federal Communications Commission (FCC) Statement.

This device complies with part 15 of the FCC Rules. Operation is subject to the following two conditions:

- (1) This device may not cause harmful interference, and
- (2) this device must accept any interference received, including interference that may cause undesired operation.

Note: This equipment has been tested and found to comply with the limits for a Class B digital device, pursuant to part 15 of the FCC Rules. These limits are designed to provide Reasonable protection against harmful interference in a residential installation. This equipment generates, uses and can radiate radio frequency energy and, if not installed and used in accordance with the instructions, may cause harmful interference to radio communications. However, there is no guarantee that interference will not occur in a particular installation. If this equipment does cause harmful interference to radio or television reception, which can be determined by turning the equipment off and on, the user is encouraged to try to correct the interference by one or more of the following measures: Reorient or relocate the receiving antenna.

?Increase the separation between the equipment and receiver.

?Connect the equipment into an outlet on a circuit different from that to which the receiver is connected.

?Consult the dealer or an experienced radio/TV technician for help.

Warning: Changes or modifications made to this device not expressly approved by Shenzhen Rongyitong Industrial Co., Ltd may void the FCC authorization to operate this device. Note: The manufacturer is not responsible for any radio or TV interference caused by unauthorized modifications to this equipment. Such modifications could void the user's authority to operate the equipment.

RF exposure statement:

This device complies with FCC RF radiation exposure limits set forth for an uncontrolled environment. The device is installed and operated without restriction.