

1

## Download the app



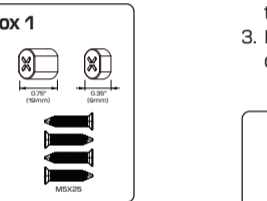
2

## Unbox and prepare components

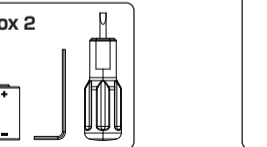
Open the packages and identify all components. Lay them out for easy access.

**Hardware components:**  
 1 X BLACK X deadbolt
**Box 1:**

- 1x CR2 3V battery
- 1x Allen key
- 1x screwdriver
- 2X mechanical key

**Box 2:**

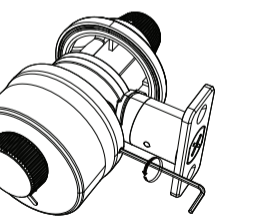
- 1 x Mounting Plate:  
2.75" x 1.13"  
(69.7mm x 28.7mm)
- 2x bolt extension cover
- 4x M5 x 1" (25mm)  
Screws



3

## Loosen the screws

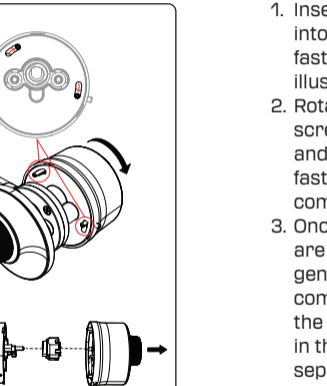
1. Use the provided Allen wrench and insert it into the screw socket (see illustration below).
2. Turn the Allen wrench counterclockwise to loosen the screw.
3. Repeat the same process for the screw on the opposite side.



4

## Disassemble the BLACK X mechanism

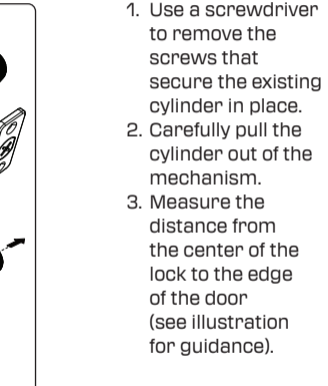
1. Rotate the BLACK X mechanism counterclockwise to loosen the body note: Refer to the arrows in the illustration below for guidance)
2. Carefully separate the mechanism body and the ratchet housing, as shown in the exploded view.



5

## Remove the Fasteners

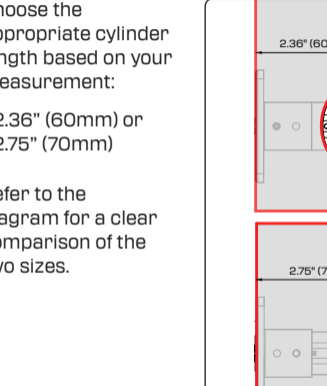
1. Insert the screwdriver into the designated fastener slots, as illustrated.
2. Rotate the screwdriver to loosen and remove the fasteners from the component.
3. Once the fasteners are removed, gently detach the components, following the directions shown in the diagram, to fully separate the lock for assembly preparation.



6

## Extracting the existing Cylinder

1. Use a screwdriver to remove the screws that secure the existing cylinder in place.
2. Carefully pull the cylinder out of the mechanism.
3. Measure the distance from the center of the lock to the edge of the door (see illustration for guidance).



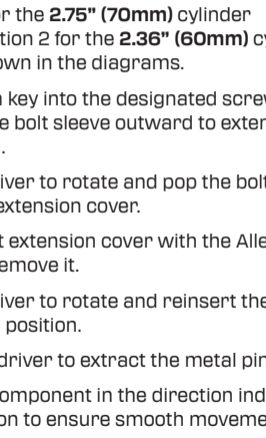
7

## Determine the Correct Fit for the BLACK X Deadbolt

Choose the appropriate cylinder length based on your measurement:

- 2.36" (60mm) or
- 2.75" (70mm)

Refer to the diagram for a clear comparison of the two sizes.

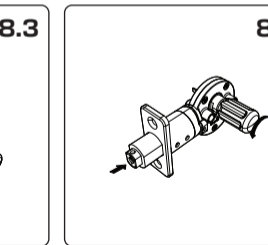
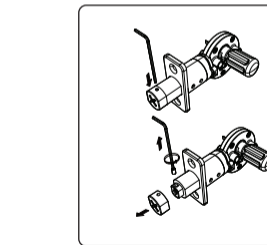
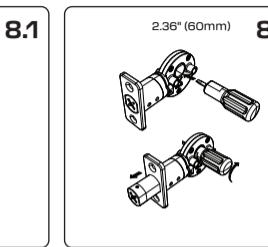
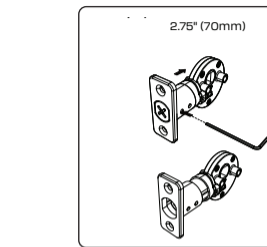


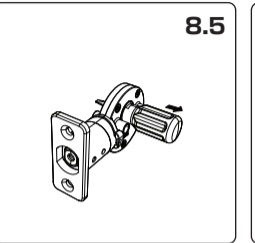
8

## Install the Cylinder (continue)

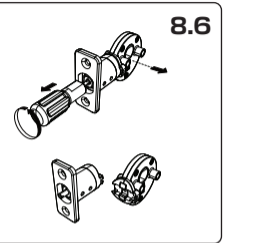
7. Insert the cylinder into the lock housing on the door, aligning it with the holes.
8. Secure the cylinder by tightening the 2xM5x1" (25mm) screws as shown in the diagrams.
9. Use a screwdriver to reattach the metal pin.
10. Rotate the bolt face plate back into position and pop the bolt extension cover.
11. Place the bolt extension cover back.
12. Tighten the bolt extension cover using the Allen key.

**Note: Select the appropriate size (60mm or 70mm) based on the required lock length.**

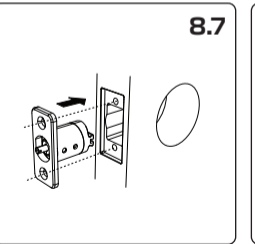




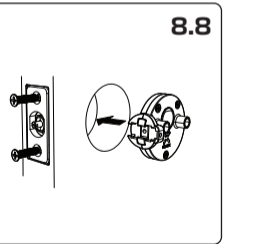
8.5



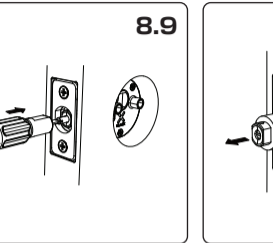
8.6



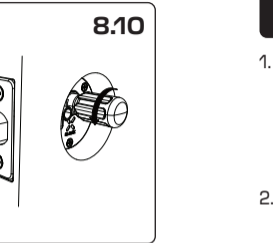
8.7



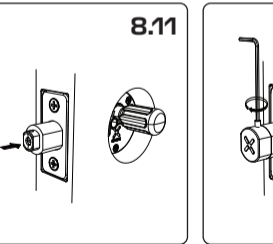
8.8



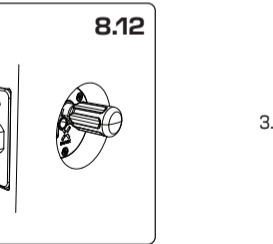
8.9



8.10



8.11



8.12

## 9 Installing the CR2 battery

1. Use a flathead screwdriver to open the dual-function battery compartment cover. Turn the screw **half a turn** and press down on the latch to release the compartment (see diagram 9-1).
2. Insert the battery release tab into the lock. Place the CR2 battery into the BLACK X device, ensuring the **positive (+)** and **negative (-)** ends align with the symbols on the battery pull tab. A beep will confirm the device is operational (see diagram 9-2).
3. Return the battery compartment cover to its original position with the tab facing outward from the lock. Use the flathead screwdriver to turn the screw back to its locked position.



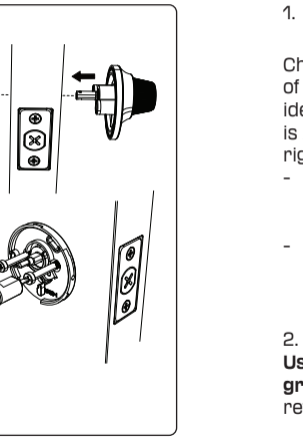
9.1



9.2

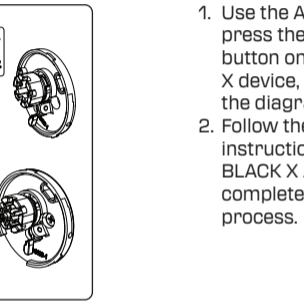
## 10 Attaching the BLACK X Deadbolt Device

1. Insert the lock mechanism through the door as shown in the diagram.
2. Align the components with the corresponding holes on both sides of the door.
3. Slide the lock mechanism fully into place, ensuring it fits securely within the door structure.
4. Tighten the screws to secure the lock in place and ensure proper alignment and functionality.

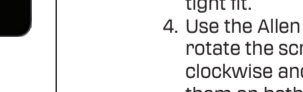
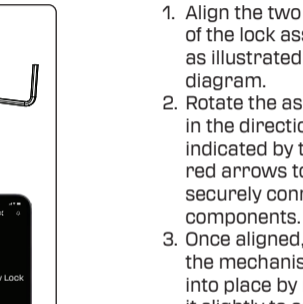
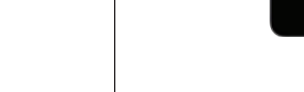
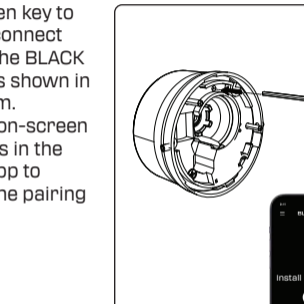


## 11 Identifying Door Orientation

1. Determine Door Opening Direction:  
Check the position of the hinges to identify if the door is left-handed or right-handed:
  - If the hinges are on the **left**, the door is **left-handed**.
  - If the hinges are on the **right**, the door is **right-handed**.

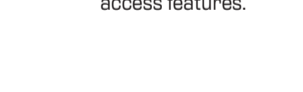
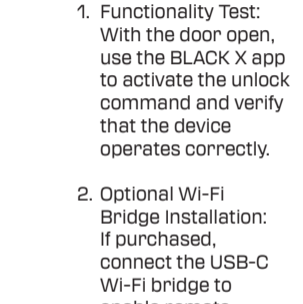


2. Mark Orientation:  
**Use the red marker for left-handed doors and the green marker for right-handed doors** (see diagram for reference).



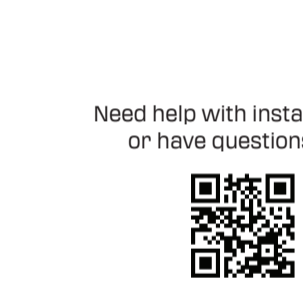
## 12 Pairing with the BLACK X App

1. Use the Allen key to press the connect button on the BLACK X device, as shown in the diagram.
2. Follow the on-screen instructions in the BLACK X App to complete the pairing process.

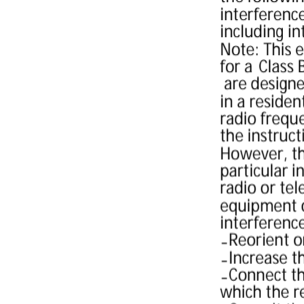


## 13 Operational Settings and Optional Wi-Fi Bridge Setup (if purchased)

1. Functionality Test:  
With the door open, use the BLACK X app to activate the unlock command and verify that the device operates correctly.
2. Optional Wi-Fi Bridge Installation:  
If purchased, connect the USB-C Wi-Fi bridge to enable remote access features.



## 14 Online Instructions



## 15 FCC Statement

This device complies with part 15 of the FCC Rules. Operation is subject to the following two conditions: (1) This device may not cause harmful interference, and (2) this device must accept any interference received, including interference that may cause undesired operation.

Note: This equipment has been tested and found to comply with the limits for a Class B digital device, pursuant to part 15 of the FCC Rules. These limits are designed to provide reasonable protection against harmful interference in a residential installation. This equipment generates, uses and can radiate radio frequency energy and, if not installed and used in accordance with the instructions, may cause harmful interference to radio communications. However, there is no guarantee that interference will not occur in a particular installation. If this equipment does cause harmful interference to radio or television reception, which can be determined by turning the equipment off and on, the user is encouraged to try to correct the interference by one or more of the following measures:

- Reorient or relocate the receiving antenna.
- Increase the separation between the equipment and receiver.
- Connect the equipment into an outlet on a circuit different from that to which the receiver is connected.
- Consult the dealer or an experienced radio/TV technician for help.

Note: The Grantee is not responsible for any changes or modifications not expressly approved by the party responsible for compliance. Such modifications could void the user's authority to operate the equipment. The device has been evaluated to meet general RF exposure requirement. To maintain compliance with FCC's RF exposure guidelines, the distance must be at least 20 cm between the radiator and your body, and fully supported by the operating and installation configurations of the transmitter and its antenna(s).

