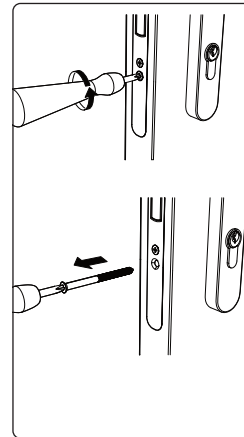


1 Download the app



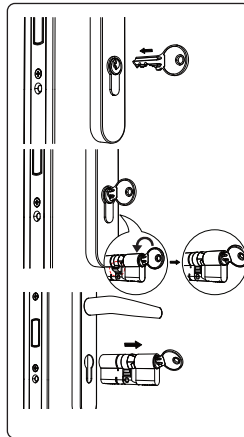
2 Removing the Old Cylinder

- 1. Locate the Mortise Plate:** Identify this plate on the door's edge where the door meets the frame.
- 2. Unscrew the Cylinder:** Locate the screw on the mortise plate that secures the cylinder. Use a suitable screwdriver to carefully unscrew it and keep the screw safely for later use.



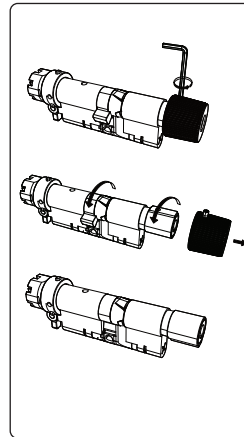
3 Extracting the Cylinder

- 1. Insert the Key:** Fully insert the original key into the cylinder.
 - 2. Align the Cam:** Rotate the key to align the cam with the body of the cylinder, ensuring it can be removed.
 - 3. Remove the Cylinder:** With the cam properly aligned, gently pull the cylinder out from its housing.
- Tips:** If you encounter resistance, recheck the cam alignment.



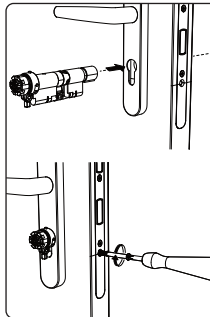
4 Preparing for New Cylinder Installation

- 1. Disassemble the Knob:** Use the provided Allen key to loosen and remove the screw securing the knob. Carefully detach the knob from its base.
- 2. Prepare the Cylinder:** Make sure the new cylinder's body aligns with the knob's internal shaft for seamless integration into the lock mechanism.



5 Installing the New Cylinder

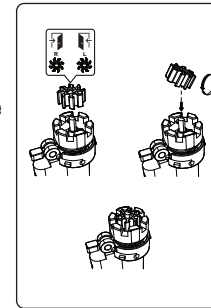
- 1. Position the New Cylinder:** Insert the new cylinder into its designated position in the door, ensuring proper alignment.
- 2. Secure the Cylinder:** Using the provided M5 steel bolt, with a length at least equal to the lock backset plus 10 mm. Hand-tighten the lock screw to secure the cylinder before using a screwdriver for final tightening. Ensure the cylinder does not protrude more than 3 mm from the door surface and install safety furniture on the door in front of the cylinder to prevent tampering. Avoid over-tightening to prevent damage.



6 Identifying Door Orientation

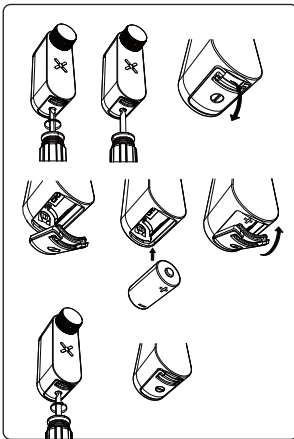
- 1. Determine Door Handedness:** Check the position of the hinges to identify if the door is left or right-handed. If hinges are on the left, it's left-handed; on the right, it's right-handed.
- 2. Mark Orientation:** Use the red marker for left-handed doors and the green marker for right-handed doors.

- Tips:**
- No tools are needed for this step. Ensure your hands are clean and dry for a secure grip.
 - Confirm the door's orientation before proceeding to avoid installation errors.



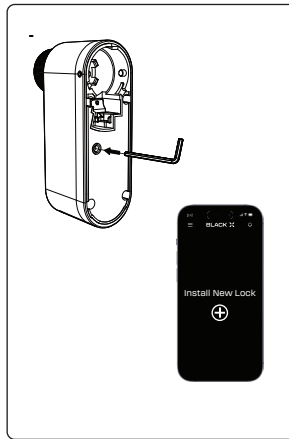
7 Installing the CR2 Battery

Battery Placement: Insert the CR2 battery into the BlackX device, ensuring the positive (+) and negative (-) ends match the symbols indicated. A beep sound will confirm that the device is operational.



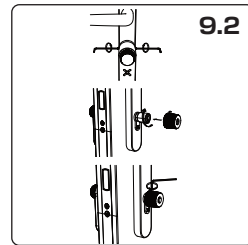
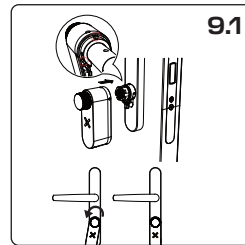
8 Pairing with the Black App

Initiate Connection: Use the Allen key to press the connect button on the BlackX device. Follow the on-screen instructions in the Black App to complete the pairing process.



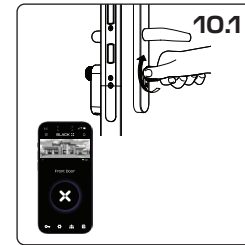
9 Attaching the BlackX Device

- Mounting the Device:** Carefully align and insert the BlackX device onto the cylinder, twisting it until it securely locks in place. Ensure there is no play between the device and the cylinder.
- Secure the Device:** Use the supplied Allen key to tighten the screws on the left and right sides of the BlackX lock, ensuring it is firmly attached.

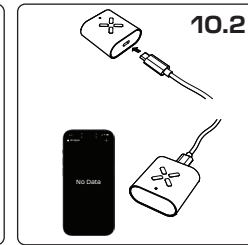


10 Operational Testing and WiFi Bridge Setup

- Functionality Test:** With the door open, test the new cylinder to confirm it operates correctly.
- WiFi Bridge Installation:** Optionally, install the USB-C WiFi bridge to enable remote access features.



By following these steps carefully, you will ensure a secure and functional installation of your new cylinder and accompanying hardware.



11 Online Instructions

Need help with installation or have questions?



www.black.inc

12 FCC Statement

This device complies with part 15 of the FCC Rules. Operation is subject to the following two conditions: (1) This device may not cause harmful interference, and (2) this device must accept any interference received, including interference that may cause undesired operation.

Note: This equipment has been tested and found to comply with the limits for a Class B digital device, pursuant to part 15 of the FCC Rules. These limits are designed to provide reasonable protection against harmful interference in a residential installation. This equipment generates, uses and can radiate radio frequency energy and, if not installed and used in accordance with the instructions, may cause harmful interference to radio communications. However, there is no guarantee that interference will not occur in a particular installation. If this equipment does cause harmful interference to radio or television reception, which can be determined by turning the equipment off and on, the user is encouraged to try to correct the interference by one or more of the following measures:

- Reorient or relocate the receiving antenna.
- Increase the separation between the equipment and receiver.
- Connect the equipment into an outlet on a circuit different from that to which the receiver is connected.
- Consult the dealer or an experienced radio/TV technician for help.

Note: The Grantee is not responsible for any changes or modifications not expressly approved by the party responsible for compliance. Such modifications could void the user's authority to operate the equipment.

The device has been evaluated to meet general RF exposure requirement. To maintain compliance with FCC's RF exposure guidelines, the distance must be at least 20 cm between the radiator and your body, and fully supported by the operating and installation configurations of the transmitter and its antenna(s).

